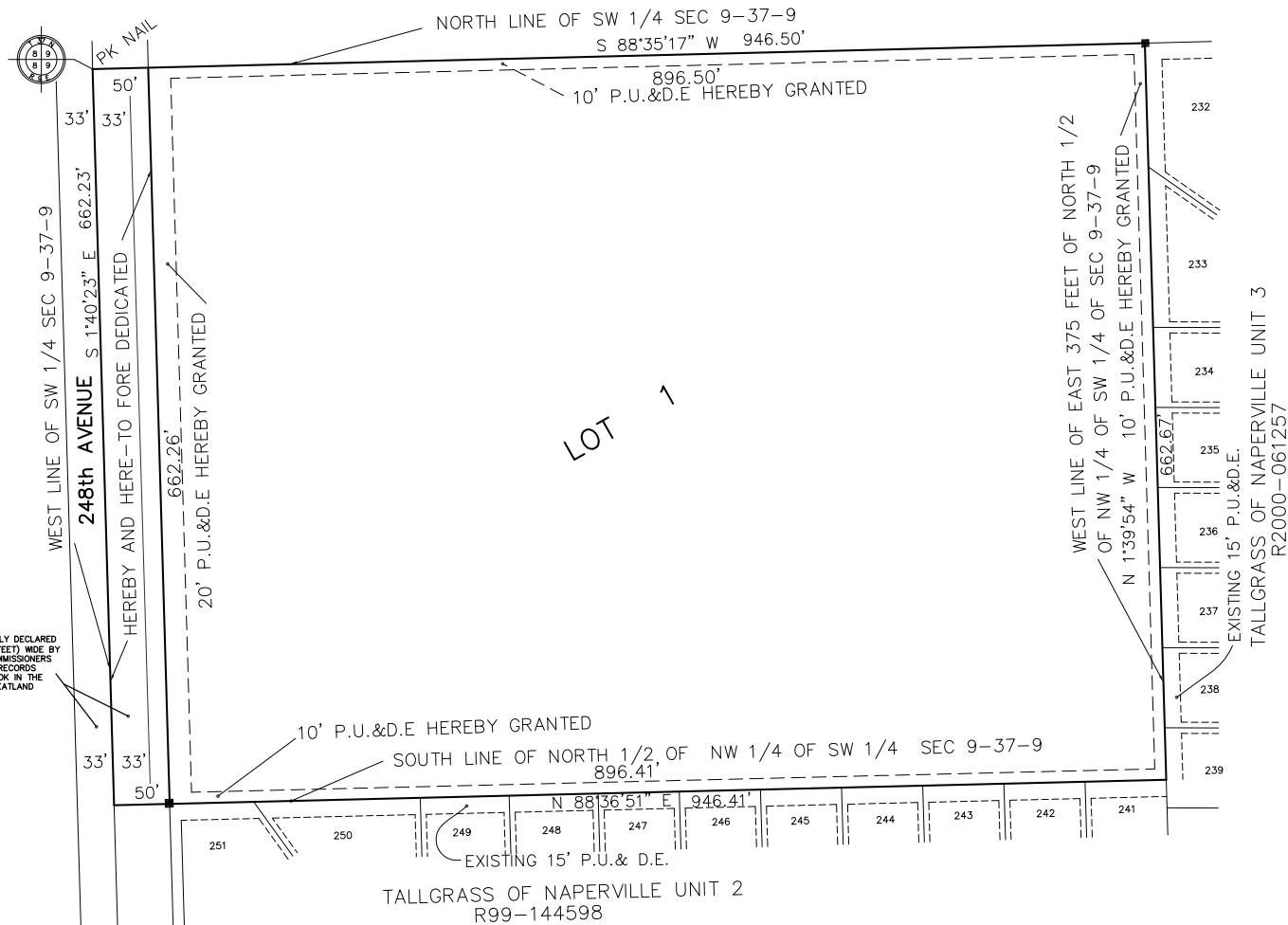


PRELIMINARY/FINAL SUBDIVISION PLAT

ISLAMIC CENTER OF NAPERVILLE 248th AVENUE SUBDIVISION

BEING A SUBDIVISION OF PART OF THE SOUTHWEST 1/4 OF SECTION 9,
TOWNSHIP 37 NORTH, RANGE 9 EAST OF THE THIRD PRINCIPAL MERIDIAN,
IN WILL COUNTY, ILLINOIS.

PENNCROSS KNOLL HOMEOWNER'S ASSOCIATION



248TH AVENUE, A PUBLIC ROAD FORMALLY DECLARED
TO BE A PUBLIC HIGHWAY 4 RODS (66 FEET) WIDE BY
THE WHEATLAND TOWNSHIP HIGHWAY COMMISSIONERS
SEPTEMBER 6, 1851 PURSUANT TO THE RECORDS
THEREOF CONTAINED IN THE RECORD BOOK IN THE
OFFICE OF THE TOWNSHIP CLERK OF WHEATLAND
TOWNSHIP, NAPERVILLE, ILLINOIS.

- NOTES:**
1. IRON PIPES ARE AT ALL LOT CORNERS.
 2. ALL EASEMENTS ARE HEREBY GRANTED UNLESS OTHERWISE NOTED.
 3. ALL EASEMENTS DEPICTED ON THE PLAT ARE FOR PUBLIC UTILITIES AND DRAINAGE PURPOSES UNLESS OTHERWISE NOTED. REFER TO THE PUBLIC UTILITIES AND DRAINAGE EASEMENT PROVISIONS STATEMENT ON SHEET 2 OF 2 FOR SPECIFIC TERMS AND CONDITIONS.
 4. ALL MEASUREMENTS AND DISTANCES ARE SHOWN IN FEET AND DECIMAL PARTS THEREOF.
 5. ALL STREET RIGHTS-OF-WAY NOTED ON THE PLAT AS "HEREBY AND HERETOFORE DEDICATED" ARE HEREBY DEDICATED, CONVEYED AND TRANSFERRED TO THE CITY OF NAPERVILLE FOR PUBLIC RIGHT-OF-WAY PURPOSES.

CITY OF NAPERVILLE STREET CLASSIFICATION

ALL STREETS WITHIN THIS SUBDIVISION SHALL BE CLASSIFIED
MINOR ARTERIAL

ALL PARKWAY TREE REQUIREMENTS SHALL
BE MET PURSUANT TO THE CITY OF
NAPERVILLE ORDINANCE AS AMENDED

DEVELOPER/OWNER:
ISLAMIC CENTER OF NAPERVILLE
450 OLESON DRIVE
NAPERVILLE, ILLINOIS 60540
TEL 630-209-2777
E-MAIL: ARAHMAN@BURNSMCD.COM

CITY OF NAPERVILLE PROJECT #11-10000138

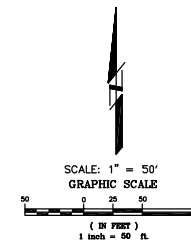


INTECH CONSULTANTS, INC.
ENGINEERS / SURVEYORS
1989 UNIVERSITY LANE, SUITE D - U.S.E., ILLINOIS
TEL: (630) 964-5656 FAX: (630) 964-5552
E-MAIL: CAD@INTECHCONSULTANTS.COM
ILLINOIS REGISTRATION NO. 184-001040

REVISED 11-15-2011 CON REVIEW OF 11-9-2011
REVISED 10-16-2011 CON REVIEW OF 10-13-2011
PREPARED: 9-27-11

SHEET No. 1 of 2 JOB No.: 2011-016

THIS PLAT HAS BEEN SUBMITTED FOR
RECORDING BY AND RETURN TO:
NAME: NAPERVILLE CITY CLERK
ADDRESS: 400 S. EAGLE STREET
NAPERVILLE, ILLINOIS
60540



LEGEND

- CONCRETE MONUMENT SET
- EASEMENT LINE
- PROPERTY LINE
- SUBDIVISION BOUNDARY LINE

ABBREVIATIONS

N = NORTH
S = SOUTH
E = EAST
W = WEST
R = RADIUS
PU & DE = PUBLIC UTILITIES
& DRAINAGE EASEMENT

SITE



LOCATION MAP
NOT TO SCALE

LOT AREA SUMMARY

LOT #	AREA
TOTAL AREA LOT 1	593,857 S.F. 13.633 ACRES
ROADWAY DEDICATION	33,112 S.F. = 0.760 ACRES
TOTAL AREA IN SUBDIVISION	14.393 ACRES

EXHIBIT B

ISLAMIC CENTER OF NAPERVILLE - 248TH AVENUE PRELIMINARY/FINAL PLAT OF SUBDIVISION

CAD JOB : 2000-001-14