

TEMPORARY RIGHT-IN, RIGHT-OUT TO BE CONSTRUCTED WITH PHASE I. THIS DRIVE MAY BE CONVERTED TO FULL ACCESS BY THE CITY OF NAPERVILLE AS PART OF THE FUTURE PLANNED IMPROVEMENTS TO 248TH AVENUE.

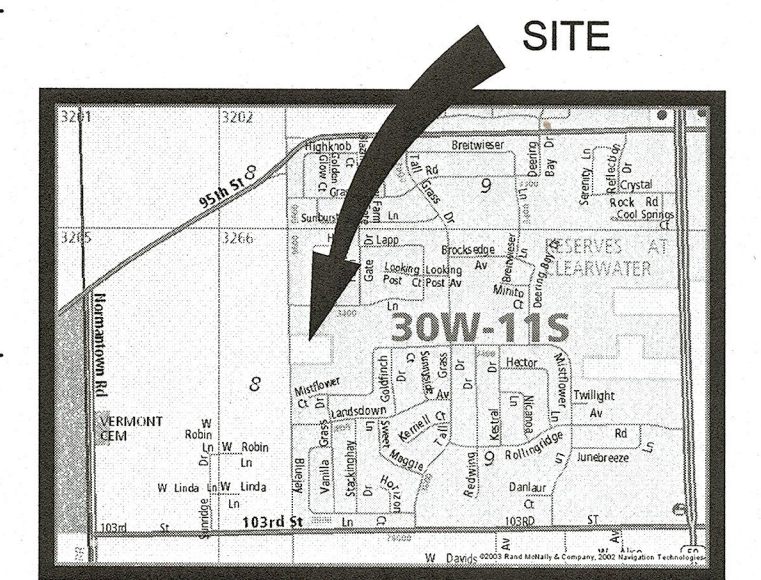
EXIST. BIKE PATH

SHADED STALLS WILL BE LOST IF LAND BANKED PARKING IS BUILT.

SCALE: 1" = 40'

SITE DATA TABLE

CURRENT ZONING:	R1
PROPOSED ZONING:	R1 WITH CONDITIONAL USE
LOT AREA:	593,857 S.F. (13.63 AC.)
PROPOSED BUILDING:	
SCHOOL (3-STORY):	41,749 S.F.
MOSQUE:	26,219 S.F.
MOSQUE ADDITION:	3,259 S.F.
MULTI-PURPOSE HALL:	22,814 S.F.
GYMNASIUM:	26,852 S.F.
PARKING REQUIRED:	711 SPACES *
PARKING PROVIDED:	726 PLANNED (INCL. 19 HANDICAP STALLS) NET GAIN → 115 188 FUTURE PARKING IF NECESSARY
BICYCLE PARKING REQUIRED:	43 STALLS
BICYCLE PARKING PROVIDED:	49 STALLS
* SEE PARKING STUDY	



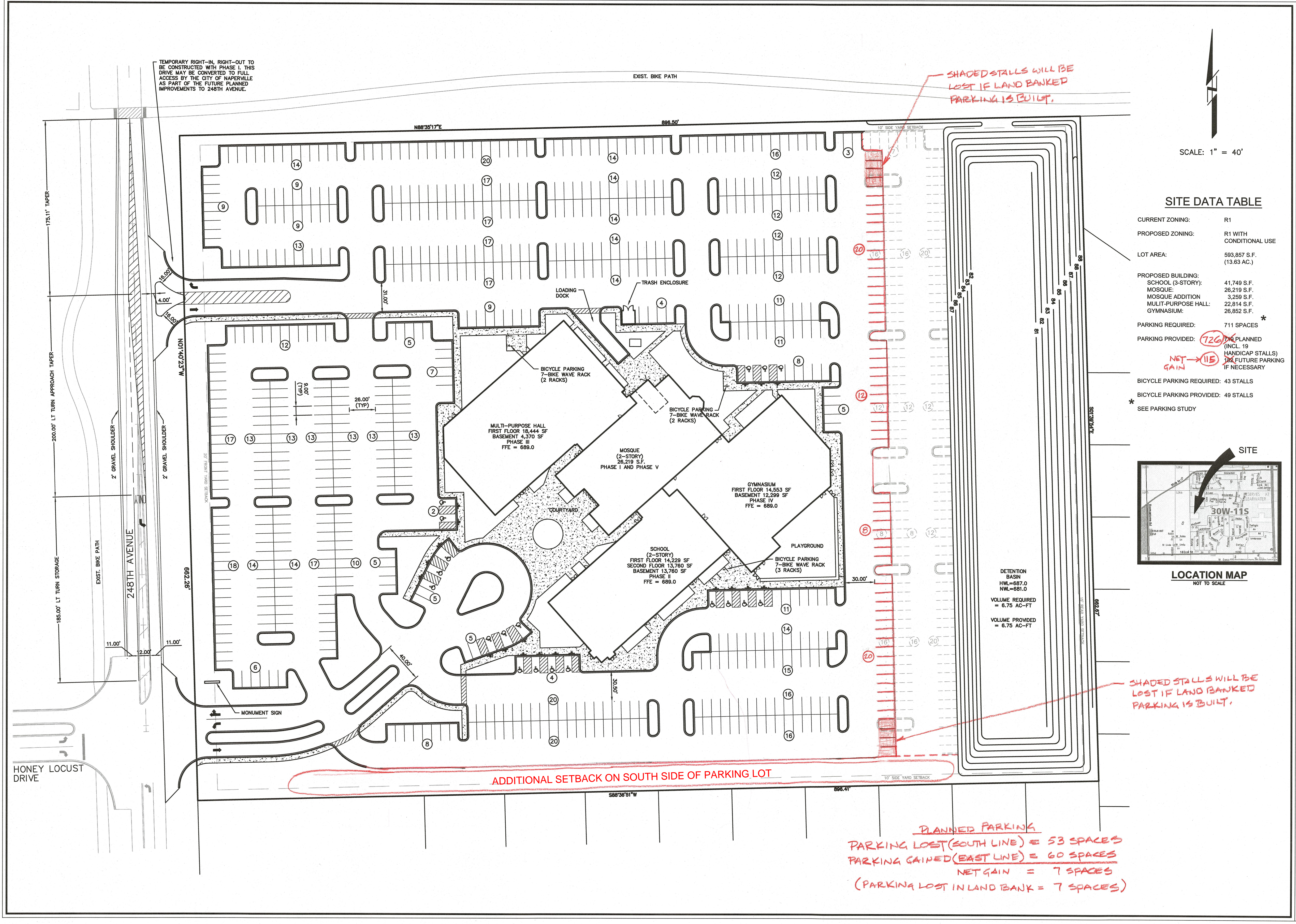
LOCATION MAP NOT TO SCALE

DETENTION BASIN
 HWL=687.0
 NWL=681.0
 VOLUME REQUIRED = 6.75 AC-FT
 VOLUME PROVIDED = 6.75 AC-FT

ADDITIONAL SETBACK ON SOUTH SIDE OF PARKING LOT

PLANNED PARKING
 PARKING LOST (SOUTH LINE) = 53 SPACES
 PARKING GAINED (EAST LINE) = 60 SPACES
 NET GAIN = 7 SPACES
 (PARKING LOST IN LAND BANK = 7 SPACES)

SHADED STALLS WILL BE LOST IF LAND BANKED PARKING IS BUILT.



INTECH CONSULTANTS, INC.
 ENGINEERS - SURVEYORS
 1889 UNIVERSITY LANE, SUITE D
 LISLE, ILLINOIS 60532
 ILLINOIS REGISTRATION No. 184-001040
 PHONE: 630-964-6566

ISLAMIC CENTER OF NAPERVILLE
 248TH AVENUE SITE
 NAPERVILLE, ILLINOIS

MASTER SITE PLAN

SCALE: 1"=40'
 DATE: 3-30-20
 DRAWN: BC
 DESIGNED: EFS
 PROJECT NO.: 2011-016B
 SHEET 1 OF 1