

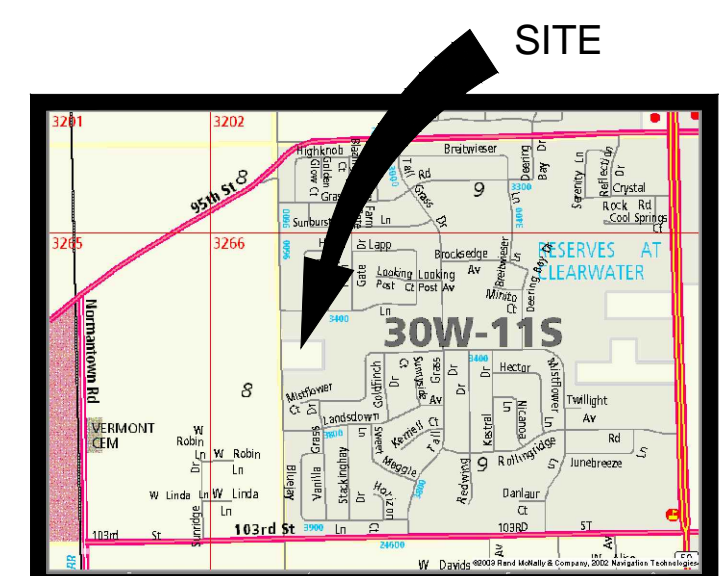
TEMPORARY RIGHT-IN, RIGHT-OUT TO BE CONSTRUCTED WITH PHASE I. THIS DRIVE MAY BE CONVERTED TO FULL ACCESS BY THE CITY OF NAPERVILLE AS PART OF THE FUTURE PLANNED IMPROVEMENTS TO 248TH AVENUE.

EXIST. BIKE PATH

SCALE: 1" = 40'

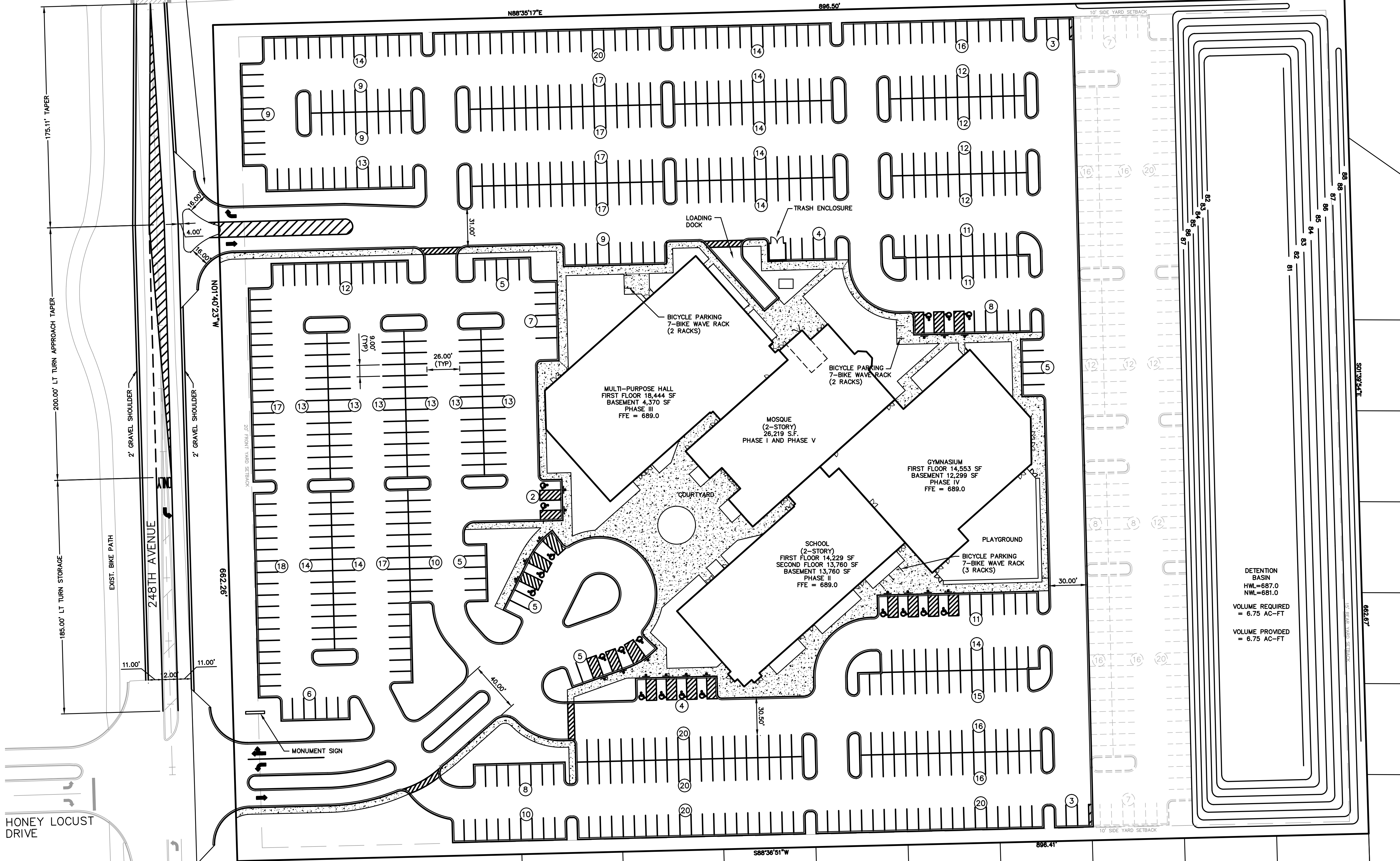
SITE DATA TABLE

CURRENT ZONING:	R1
PROPOSED ZONING:	R1 WITH CONDITIONAL USE
LOT AREA:	593,857 S.F. (13.63 AC.)
PROPOSED BUILDING:	
SCHOOL (3-STORY):	41,749 S.F.
MOSQUE:	26,219 S.F.
MOSQUE ADDITION:	3,259 S.F.
MULT-PURPOSE HALL:	22,814 S.F.
GYMNASIUM:	26,852 S.F.
PARKING REQUIRED:	711 SPACES *
PARKING PROVIDED:	719 PLANNED (INCL. 19 HANDICAP STALLS) 182 FUTURE PARKING IF NECESSARY
BICYCLE PARKING REQUIRED:	43 STALLS
BICYCLE PARKING PROVIDED:	49 STALLS
* SEE PARKING STUDY	



LOCATION MAP
NOT TO SCALE

DETENTION BASIN
HWL=687.0
NWL=681.0
VOLUME REQUIRED = 6.75 AC-FT
VOLUME PROVIDED = 6.75 AC-FT



INTECH CONSULTANTS, INC.
1989 UNIVERSITY LANE, SUITE D
LISLE, ILLINOIS 60532
PHONE: 630-964-5656
ILLINOIS REGISTRATION No. 184-001040

ISLAMIC CENTER OF NAPERVILLE
248TH AVENUE SITE
NAPERVILLE, ILLINOIS

MASTER SITE PLAN

SCALE: 1"=40'
DATE: 3-30-20
DRAWN: BC
DESIGNED: EFS
PROJECT NO. 2011-016B
SHEET 1 OF 1

8-27-20 2 PER CITY REVIEW
4-27-20 1 PER CLIENT REVIEW
DATE NO. REVISION BY