

PLANTING NOTES

1. Sod limit line is approximate. Seed/Sod to limits of grading and disturbance. Contractor responsible for restoration of any unauthorized disruption outside of designated construction area.
2. Contractor responsible for erosion control in all sodded areas.
3. Tree mulch rings in turf areas are 5 foot diameter, typical. Contractor shall provide a mulch ring around all existing trees within the limit of work. Remove all existing grass from area to be mulched and provide a typical v-trench edge.
4. Bedlines are to be spade cut to a minimum depth of 3 inches unless otherwise shown on the plans. Curved bedlines are to be smooth and not segmented.
5. Do not locate plants within 10' of utility structures, or within 5' horizontally of underground utility lines unless otherwise shown on the plans. Consult with Landscape Architect if these conditions exist.
6. Install topsoil as required to meet finish grade and achieve positive drainage. Install 2" of soil conditioner in all planting areas. Till to a 6" depth.
7. Provide 3" mulch depth for tree and shrub planting. Provide 2" mulch depth in all perennial pant beds.
8. Irrigation: Provide head to head spray coverage in all turf and planting areas. New irrigation to tie into existing system. Proposed building to supply water. Provide separate irrigation submeter for SoulCycle water use. Provide shop drawings for owner approval.
9. Refer to specifications for additional conditions, standards and notes.

PLANTING LEGEND

- Existing trees to remain
- Large Oak tree to be preserved
- Shade Tree, typical.
See detail for installation.
Quantity: 36, 3" Caliper
- Ornamental Tree, typical.
See detail for installation.
Quantity: 30, 6' Height
- Evergreen Tree, typical.
See detail for installation.
Quantity: 3, 6' Height



22 E. Chicago Avenue
Suite 200A
Naperville, IL 60540
T 630.961.1787

hitchcockdesigngroup.com

PREPARED FOR
Ram West Capital LLC
in partnership with
DJK Custom Homes
532 S Webster Street
Naperville, IL 60540

PROJECT

Heritage Place
in Historic
Naperville
Naperville, IL 60540

ISSUED
September 8, 2020
REVISIONS

No	Date	Issue
1	08/14/2020	Revised per City Comments
2	09/08/2020	Revised per City Comments

CHECKED BY
GBR

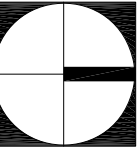
DRAWN BY
XS

SHEET TITLE
Preliminary
Landscape Plan

SCALE IN FEET
1" = 30'



NORTH



SHEET NUMBER

L2.0

©2020 Hitchcock Design Group



22 E. Chicago Avenue
Suite 200A
Naperville, IL 60540
T 630.961.1787

hitchcockdesigngroup.com

PREPARED FOR
Ram West Capital LLC
in partnership with
DJK Custom Homes
532 S Webster Street
Naperville, IL 60540

PROJECT
**Heritage Place
in Historic
Naperville**
Naperville, IL 60540

ISSUED
September 8, 2020
REVISIONS

No	Date	Issue
1	08/14/2020	Revised per City Comments
2	09/08/2020	Revised per City Comments

CHECKED BY
GBR

DRAWN BY
XS

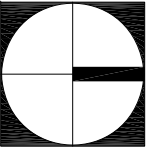
SHEET TITLE
Tree Removal Plan

SCALE IN FEET
1" = 30'



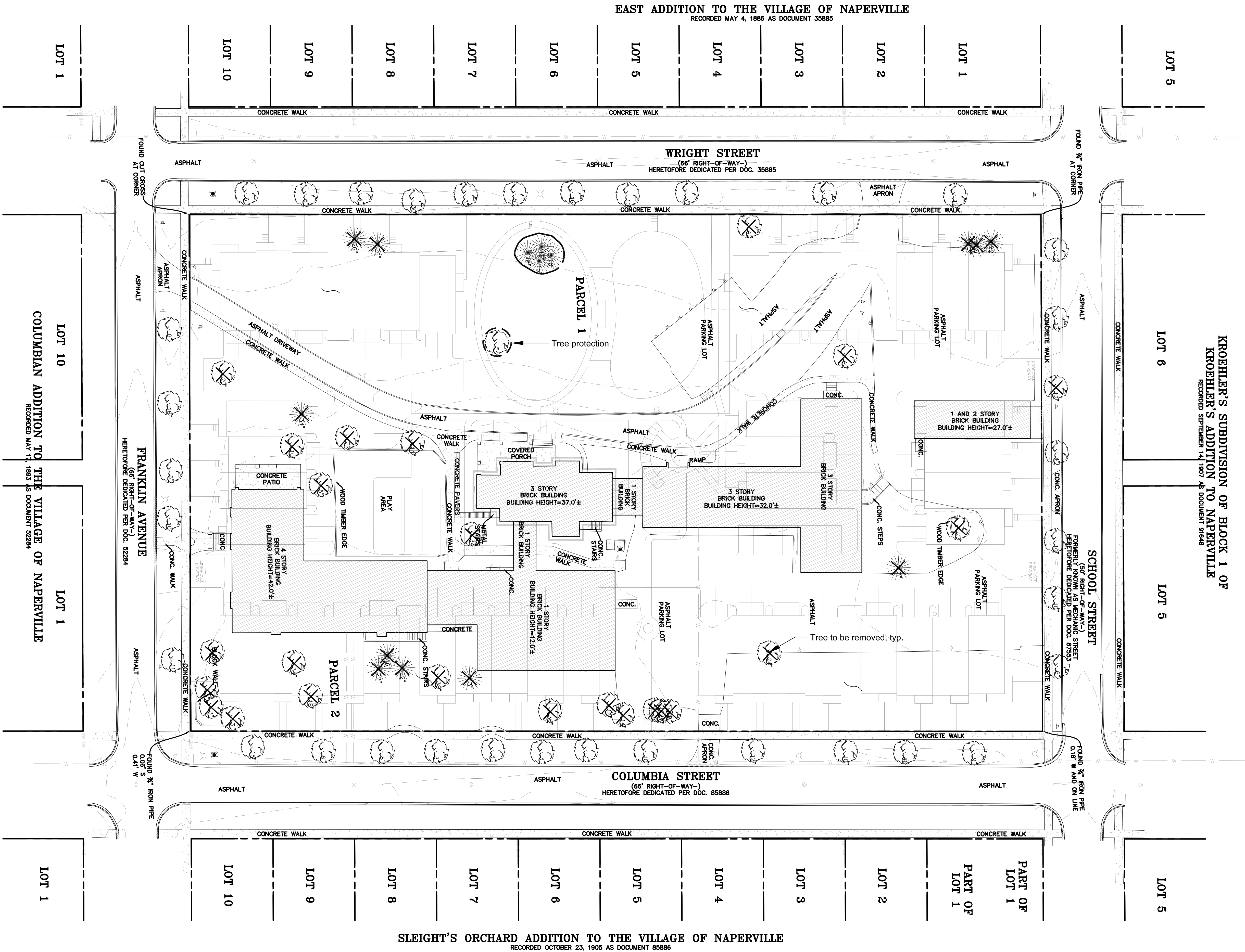
NORTH

SHEET NUMBER



L1.0

©2020 Hitchcock Design Group



EAST ADDITION TO THE VILLAGE OF NAPERVILLE
RECORDED MAY 4, 1886 AS DOCUMENT 35885

WRIGHT STREET
(66' RIGHT-OF-WAY-)
HERETOFORE DEDICATED PER DOC. 35885

COLUMBIA STREET
(66' RIGHT-OF-WAY-)
HERETOFORE DEDICATED PER DOC. 85886

SLEIGHT'S ORCHARD ADDITION TO THE VILLAGE OF NAPERVILLE
RECORDED OCTOBER 23, 1905 AS DOCUMENT 85886

COLUMBIAN ADDITION TO THE VILLAGE OF NAPERVILLE
RECORDED MAY 17, 1893 AS DOCUMENT 52284