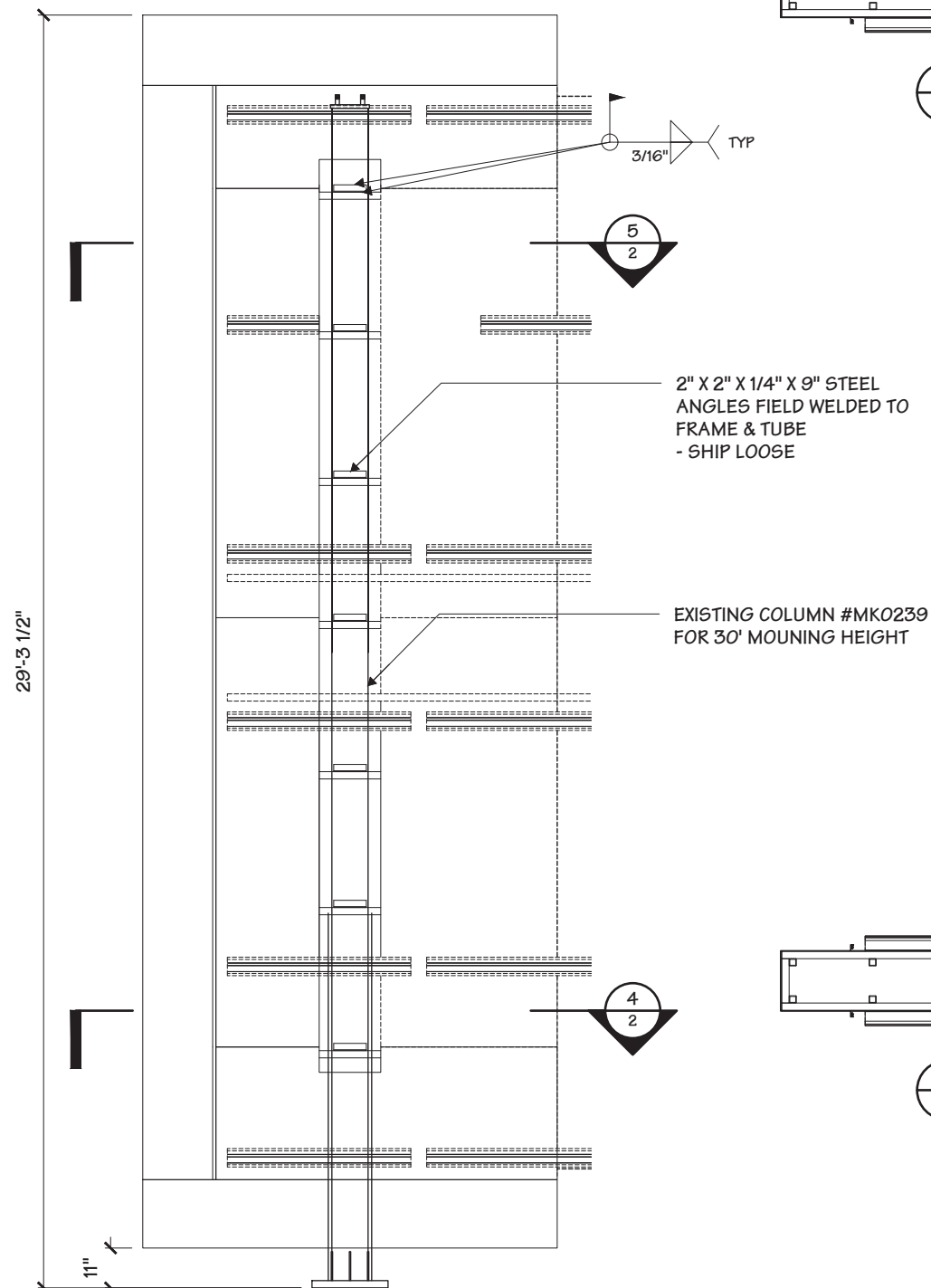
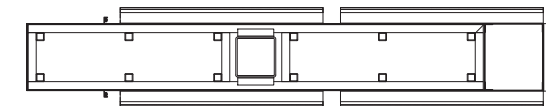


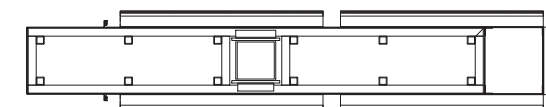
1 STRUCTURAL ELEVATION  
2 1/4" = 1' - 0"



3 INSTALLATION ELEVATION  
2 1/4" = 1' - 0"



5 SECTION VIEW  
2 1/4" = 1' - 0"



4 SECTION VIEW  
2 1/4" = 1' - 0"

Project Title  
**LINCOLN**

Date **09.15.16**

AGI EoR **J. MEYER**  
Lead Drafter **JLM**  
Drawn By **R. KING**  
Project Mgr. **J. OVERTON**

General Sign Specifications

<input type="checkbox"/> Interior	<input checked="" type="checkbox"/> Exterior
<input type="checkbox"/> Single Faced	<input checked="" type="checkbox"/> Double Faced
<input type="checkbox"/> Non-Illuminated	<input checked="" type="checkbox"/> Illuminated
120 Volts _____ Amps(+/-)	
Location _____	
Windload <b>110 MPH / IBC 2012</b>	

Drawing Revisions	Change	Date
1	ADDED BASE COVER DETAIL	10.31.17
2	BASE COVER ALIGNMENT	10.15.18
3		
4		
5		
6		
7		
8		
9		

This document is the sole property of Architectural Graphics, Inc., and all design, manufacturing, reproduction, use and sale rights regarding the same are expressly forbidden. It is submitted under a confidential relationship, for a special purpose, and the recipient, by accepting this document assumes custody and agrees that this document will not be copied or reproduced in whole or in part, nor its contents revealed in any manner or to any person except for the purpose for which it was tendered, nor any special features peculiar to this design be incorporated in other projects.

Code **15296** Type **A**

Sign Type **LN-P30** PG. #: **2**

Project Title

LINCOLN

Date 09.15.16

AGI EoR J.MEYER

Lead Drafter JLM

Drawn By R. KING

Project Mgr. J. OVERTON

General Sign Specifications

- ☐ Interior ☒ Exterior  
☐ Single Faced ☒ Double Faced  
☐ Non-Illuminated  
☒ Illuminated  
120 Volts \_\_\_\_\_ Amps(+/-)

Location \_\_\_\_\_

Windload 110 MPH / IBC 2012

Drawing Revisions

Drawn By	Date	Change
1 RMP	10.31.17	ADDED BASE COVER DETAIL
2 AV	10.15.18	BASE COVER ALIGNMENT
3		
4		
5		
6		
7		
8		
9		

This document is the sole property of Architectural Graphics, Inc., and all design, manufacturing, reproduction, use and sale rights regarding the same are expressly forbidden. It is submitted under a confidential relationship, for a special purpose, and the recipient, by accepting this document assumes custody and agrees that this document will not be copied or reproduced in whole or in part, nor its contents revealed in any manner or to any person except for the purpose for which it was tendered, nor any special features peculiar to this design be incorporated in other projects.

Code

15296

Sign Type

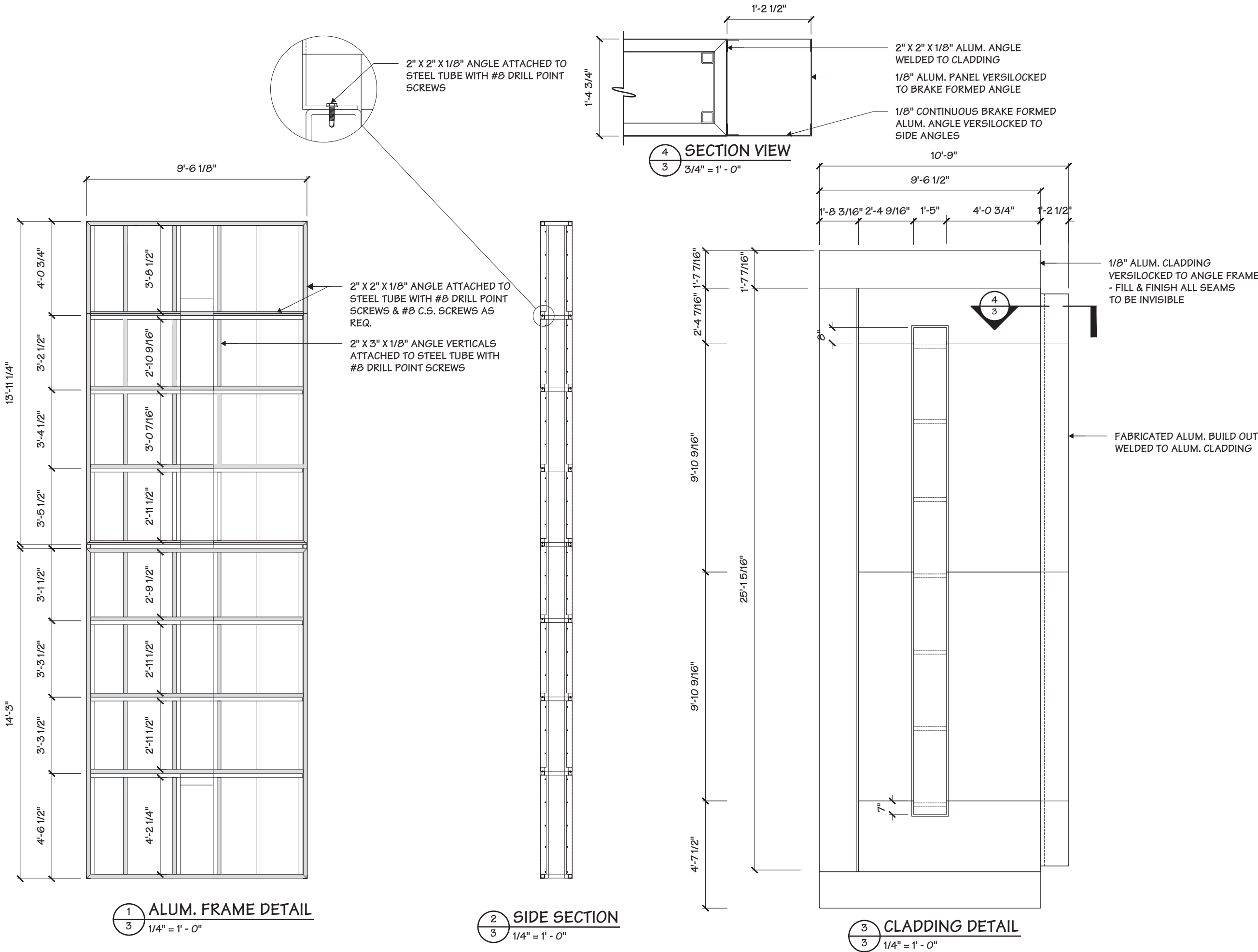
LN-P30

Type

A

PG. #:

3



Project Title

**LINCOLN**

Date **09.15.16**

AGI EoR **J. MEYER**

Lead Drafter **JLM**

Drawn By **R. KING**

Project Mgr. **J. OVERTON**

General Sign Specifications

- ☐ Interior ☒ Exterior  
☐ Single Faced ☒ Double Faced  
☐ Non-Illuminated  
☒ Illuminated

120 Volts      Amps(+/-)

Location                     

Windload **110 MPH / IBC 2012**

Drawing Revisions	Change	Date
1	ADDED BASE COVER DETAIL	10.31.17
2	BASE COVER ALIGNMENT	10.15.18
3		
4		
5		
6		
7		
8		
9		

This document is the sole property of Architectural Graphics, Inc., and all design, manufacturing, reproduction, use and sale rights regarding the same are expressly forbidden. It is submitted under a confidential relationship, for a special purpose, and the recipient, by accepting this document assumes custody and agrees that this document will not be copied or reproduced in whole or in part, nor its contents revealed in any manner or to any person except for the purpose for which it was tendered, nor any special features peculiar to this design be incorporated in other projects.

Code

**15296**

Type

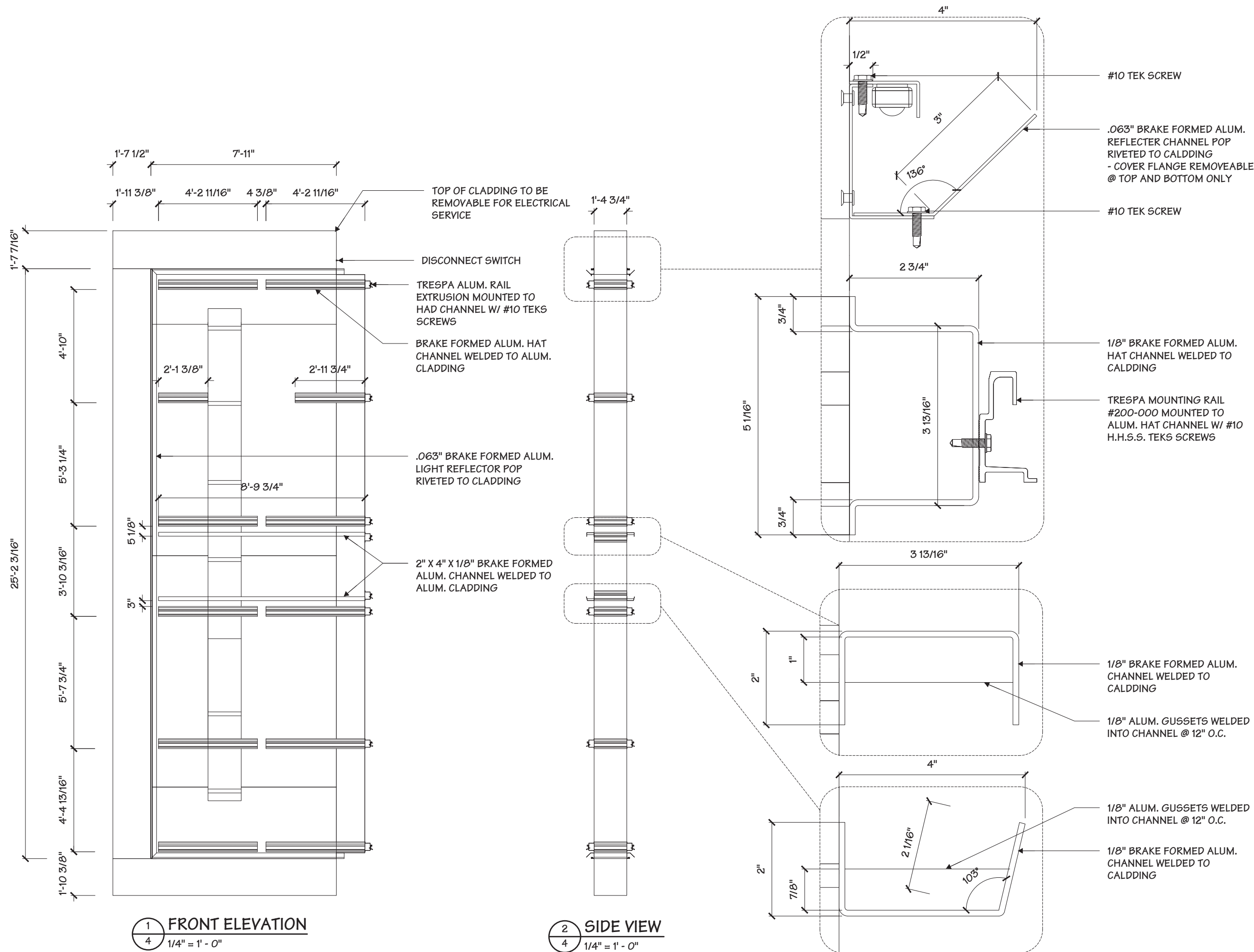
**A**

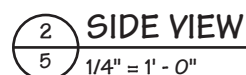
Sign Type

**LN-P30**

PG. #:

**4**





**2655 International  
Parkway  
P.O. Box 9175  
Virginia Beach, VA 23450  
(757) 497-1000**

LINCOLN

Date 09.15.16

**Lead Drafter JLM**

**Drawn By**      **R. KING**

Project Mgr. J. OVERTON

### General Sign Specifications

☐ **Non-Illuminated**

■ **Illuminated**

120 Volts          Amps(+/-)

### Location

Windload **110 MPH / IBC 2012**

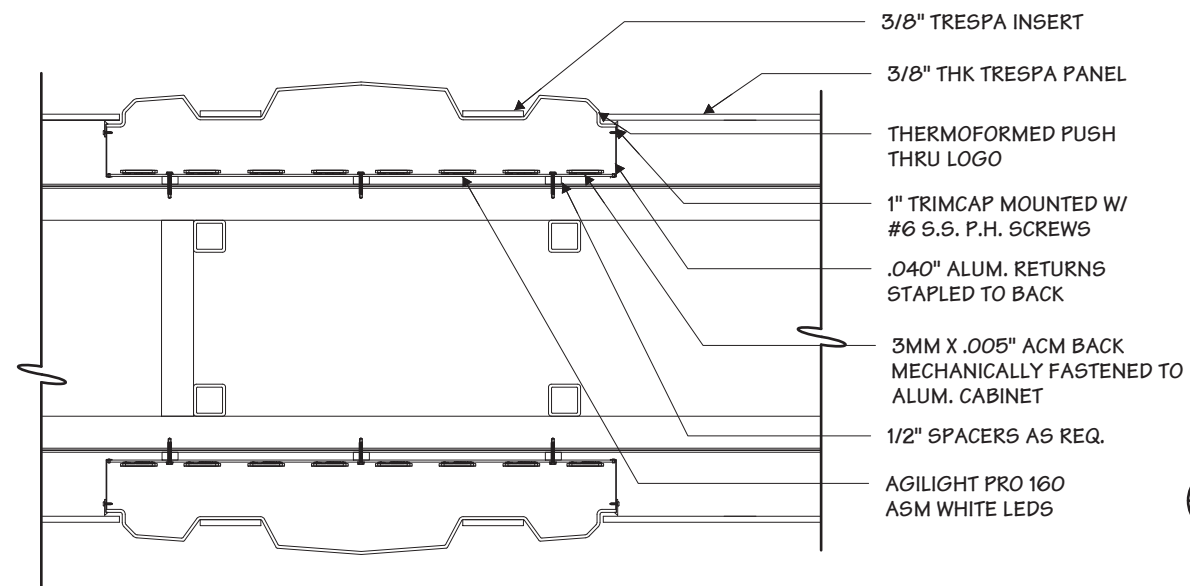
Drawing Revisions		
Drawn By	Date	Change
1 RMP	10.31.17	ADDED BASE COVER DETAIL
2 AV	10.15.18	BASE COVER ALIGNMENT
3		
4		
5		
6		
7		
8		

This document is the sole property of Architectural Graphics, Inc., and all design, manufacturing, reproduction, use and sale rights regarding the same are expressly forbidden. It is submitted under a confidential relationship, for a special purpose, and the recipient, by accepting this document assumes custody and agrees that this document will not be copied or reproduced in whole or in part, nor its contents revealed in any manner or to any person except for the purpose for which it was tendered, nor any special features peculiar to this design be incorporated in other projects.

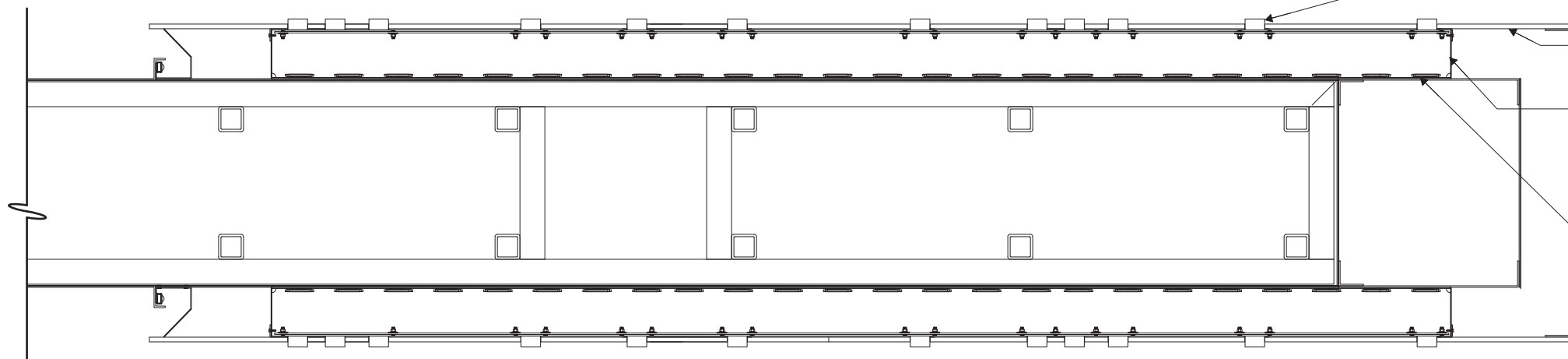
**Code**  
**15296**

**Sign Type**  
**LN-P30**

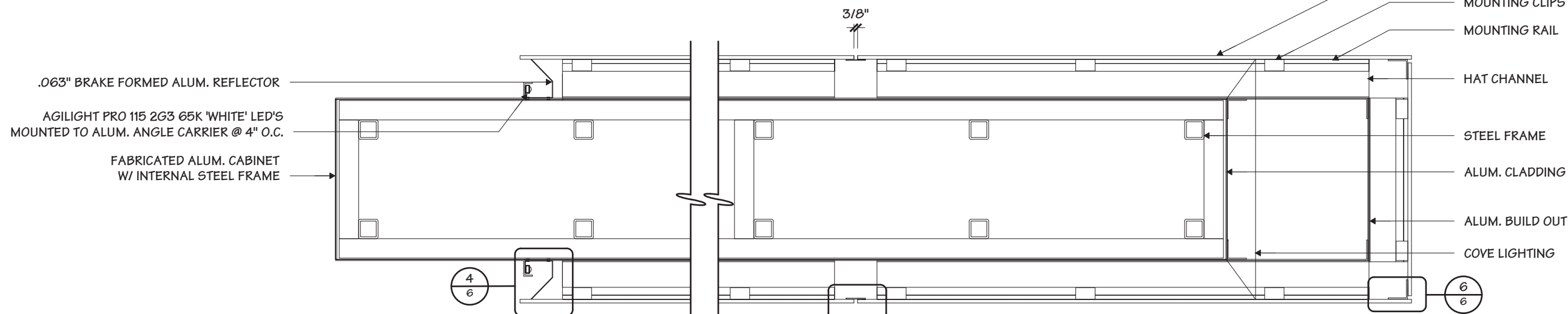
Type  
APG. #  
5



1 SECTION VIEW  
1" = 1' - 0"

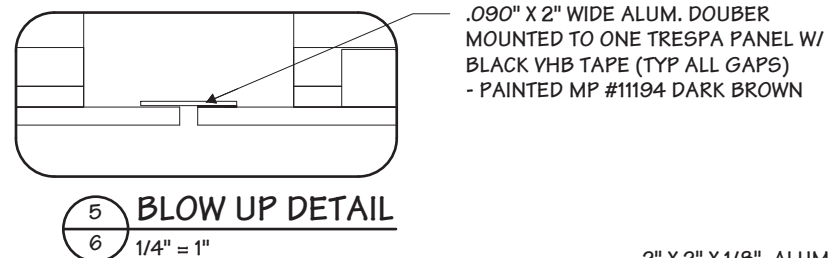


2 SECTION VIEW  
1" = 1' - 0"

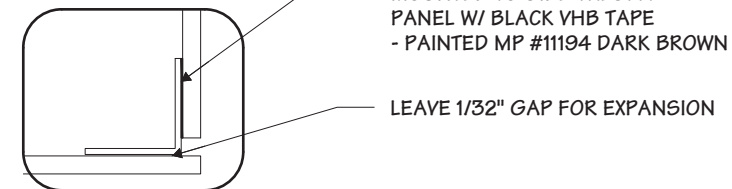


3 SECTION VIEW  
1" = 1' - 0"

4 BLOW UP DETAIL (COVE @ SIDE ONLY)  
1/4" = 1"



5 BLOW UP DETAIL  
1/4" = 1"



6 BLOW UP DETAIL  
1/4" = 1"

Project Title

**LINCOLN**

Date **09.15.16**

AGI EoR **J.MEYER**

Lead Drafter **JLM**

Drawn By **R. KING**

Project Mgr. **J. OVERTON**

General Sign Specifications

☐ Interior ☒ Exterior  
☐ Single Faced ☒ Double Faced

☐ Non-Illuminated  
☒ Illuminated

120 Volts      Amps(+/-)

Location                     

Windload **110 MPH / IBC 2012**

Drawing Revisions			Change
Drawn By	Date		
1 RMP	10.31.17		ADDED BASE COVER DETAIL
2 AV	10.15.18		BASE COVER ALIGNMENT
3			
4			
5			
6			
7			
8			

This document is the sole property of Architectural Graphics, Inc., and all design, manufacturing, reproduction, use and sale rights regarding the same are expressly forbidden. It is submitted under a confidential relationship, for a special purpose, and the recipient, by accepting this document assumes custody and agrees that this document will not be copied or reproduced in whole or in part, nor its contents revealed in any manner or to any person except for the purpose for which it was tendered, nor any special features peculiar to this design be incorporated in other projects.

Code

**15296**

Type

**A**

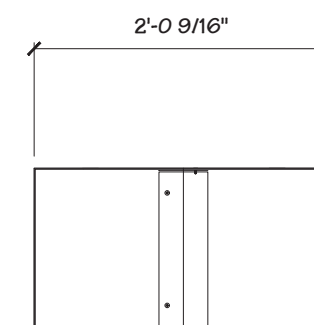
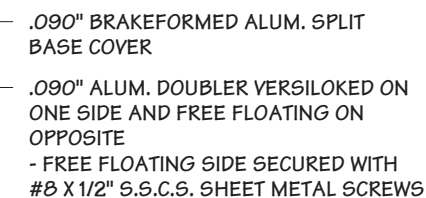
Sign Type


**LN-P30**

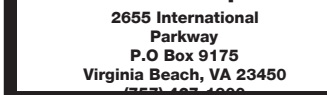
PG. #:

**6**






**SIDE SECTION**  
 1" = 1' - 0"



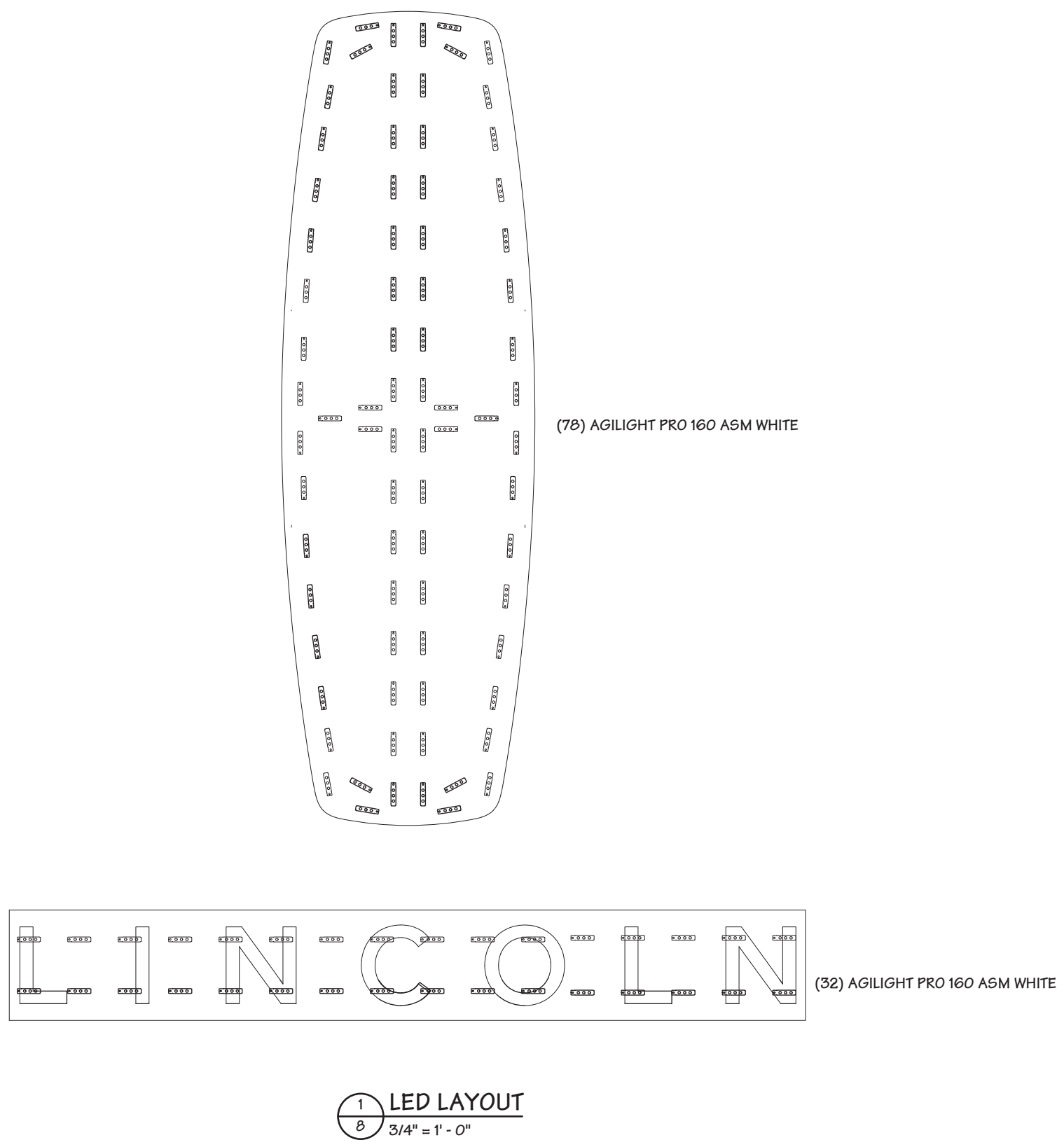
Date 09.15.16

**General Sign Specifications**

<input type="checkbox"/> Interior	<input checked="" type="checkbox"/> Exterior
<input type="checkbox"/> Single Faced	<input checked="" type="checkbox"/> Double Faced
<input type="checkbox"/>	
<input type="checkbox"/> Non-Illuminated	
<input checked="" type="checkbox"/> Illuminated	
<u>120</u> Volts	<u>      </u> Amps(+/-)
<b>Location</b> _____	
<b>Windload</b> <u>110 MPH / IBC 2012</u>	

This document is the sole property of Architectural Graphics, Inc., and all design, manufacturing, reproduction, use and sale rights regarding the same are expressly forbidden. It is submitted under a confidential relationship, for a special purpose, and the recipient, by accepting this document assumes custody and agrees that this document will not be copied or reproduced in whole or in part, nor its contents revealed in any manner or to any person except for the purpose for which it was tendered, nor any special features peculiar to this design be incorporated in other projects.

Code	<b>15296</b>	Type	<b>A</b>
Sign Type	<b>LN-P30</b>	PG.	<b>8</b>





Project Title

LINCOLN

Date 09.15.16

AGI EoR J.MEYER

Lead Drafter JLM

Drawn By R. KING

Project Mgr. J. OVERTON

General Sign Specifications

☐ Interior ☒ Exterior  
☐ Single Faced ☒ Double Faced

☐ Non-Illuminated  
☒ Illuminated  
120 Volts \_\_\_\_\_ Amps(+/-)

Location \_\_\_\_\_

Windload 110 MPH / IBC 2012

Drawing Revisions	Change	Date	ADDED BASE COVER DETAIL	
			BASE COVER ALIGNMENT	
1	RMP	10.31.17		
2	AV	10.15.18		
3				
4				
5				
6				
7				
8				
9				

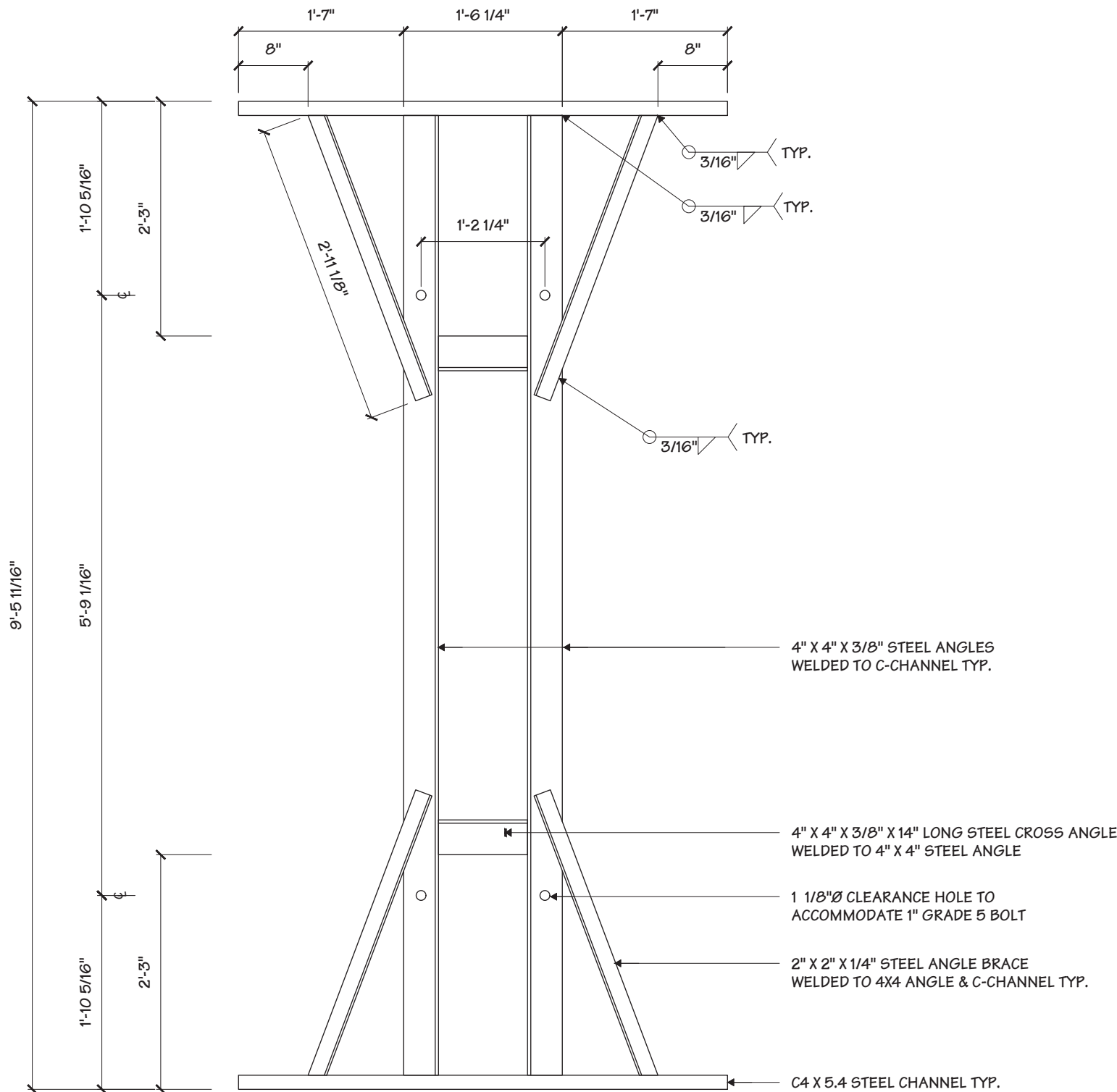
This document is the sole property of Architectural Graphics, Inc., and all design, manufacturing, reproduction, use and sale rights regarding the same are expressly forbidden. It is submitted under a confidential relationship, for a special purpose, and the recipient, by accepting this document assumes custody and agrees that this document will not be copied or reproduced in whole or in part, nor its contents revealed in any manner or to any person except for the purpose for which it was tendered, nor any special features peculiar to this design be incorporated in other projects.

Code 15296

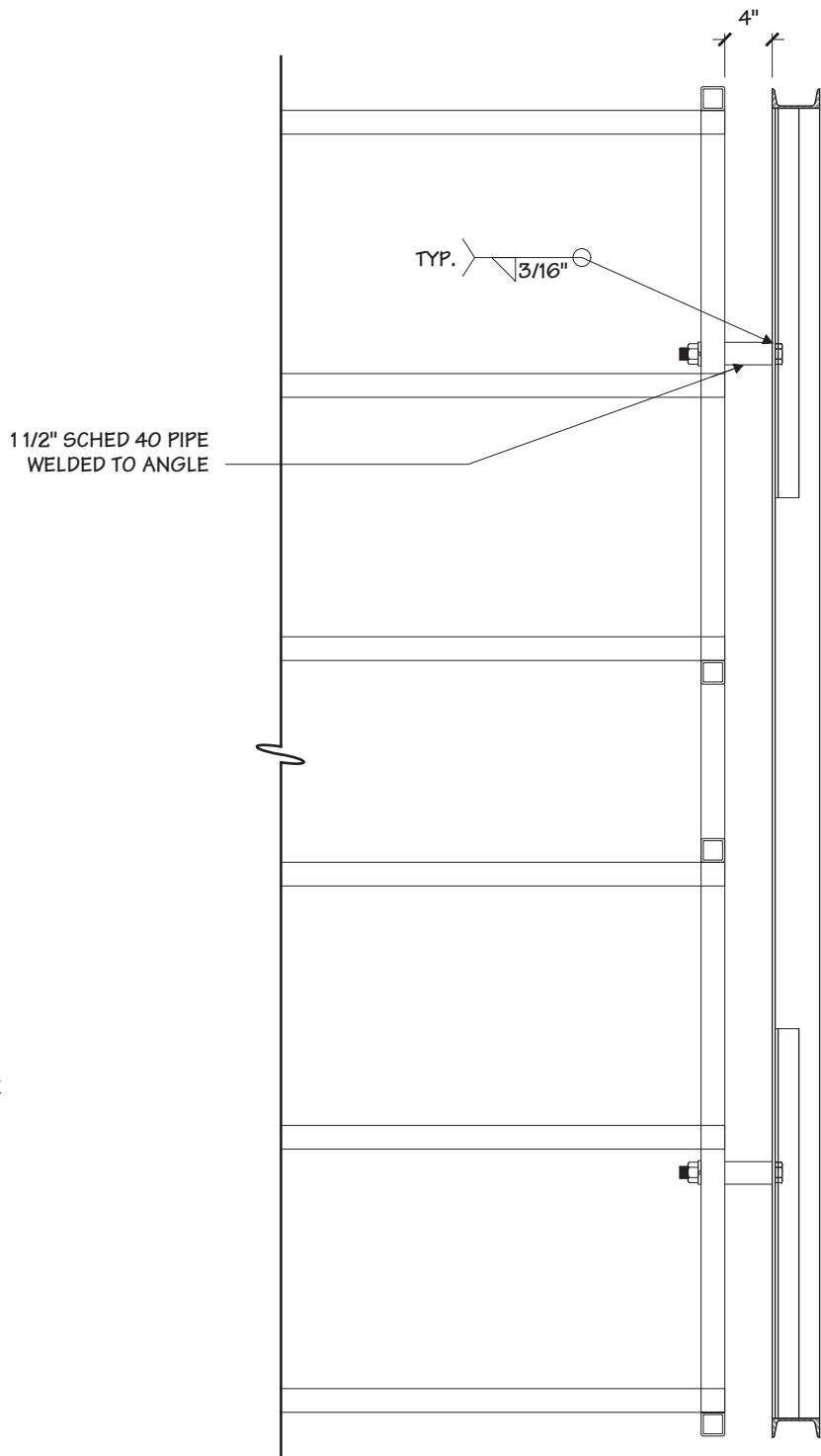
Type A

Sign Type LN-P30

PG. #: 9



1 SHOP STAND  
9 3/4" = 1' - 0"



2 SIDE VIEW  
9 3/4" = 1' - 0"