

Landscape Plan

NAPERVILLE CROSSINGS

Naperville, Illinois

August 8, 2019

CONSULTANTS:



LANDSCAPE ARCHITECT:
GARY R. WEBER ASSOCIATES, INC.
402 WEST LIBERTY DRIVE
WHEATON, ILLINOIS 60187



CIVIL ENGINEER:
MACKIE CONSULTANTS, LLC.
9575 WEST HIGGINS ROAD, SUITE 500
ROSEMONT, ILLINOIS 60018



LOCATION MAP

SCALE: 1"=200'

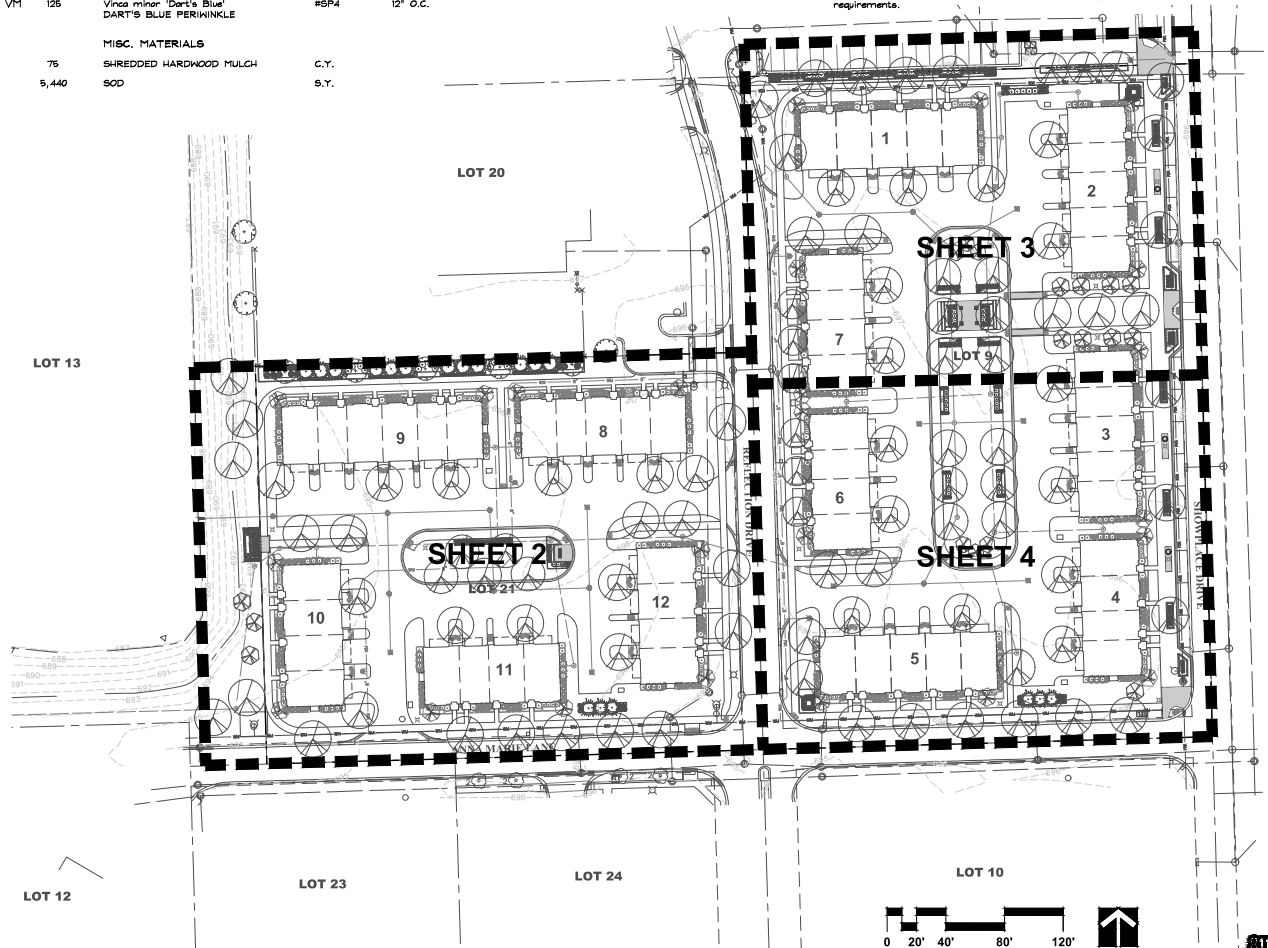
INDEX OF SHEETS

SHEET NO.	DESCRIPTION
0	COVER SHEET
1	OVERALL LANDSCAPE PLAN
2	LANDSCAPE PLAN
3	LANDSCAPE PLAN
4	LANDSCAPE PLAN
5	TYPICAL FOUNDATION PLANS
6	TYPICAL FOUNDATION PLANS
7	AMENITY LAYOUT PLANS
8	AMENITY DETAILS
9	MONUMENT DETAILS
10	LANDSCAPE SPECIFICATIONS
11	LANDSCAPE SPECIFICATIONS

LENNAR®

PLANT LIST

Key	Qty	Botanical/Common Name	Size	Remarks
SHADE TREES				
AF	6	Acer x freemanii 'Hanna' MARMO FREEMAN MAPLE	2" Cal.	
AA	7	Acer x freemanii 'Jeffers Red' AUTUMN BLAZE FREEMAN MAPLE	3" Cal.	
AM	8	Acer miyabei 'Morton' STATE STREET MAPLE	2 1/2" Cal.	
AR	6	Acer rubrum 'Frankford' RED SUNSET RED MAPLE	2 1/2" Cal.	
CO	7	Celtis occidentalis COMMON HACKBERRY	2" Cal.	
GT	11	Gleditsia triacanthos var. inermis 'Skycole' SKYLINE HONEYLOCUST	2" Cal.	
PA	13	Platanus x acerifolia 'Morton Circle' EXCLAMATION! LONDON PLANETREE	3" Cal.	
GI	8	Quercus imbricaria SHINGLE OAK	2 1/2" Cal.	
GR	6	Quercus rubra RED OAK	2 1/2" Cal.	
TC	6	Tilia cordata 'Greenspire' GREENSPIRE LITTLELEAF LINDEN	3" Cal.	
TT	10	Tilia tomentosa 'Sterling' STERLING SILVER LINDEN	2 1/2" Cal.	
UC	11	Ulmus carpinifolia 'New Horizon' NEW HORIZON SMOOTHLEAF ELM	2 1/2" Cal.	
ORNAMENTAL TREES				
AG	1	Amelanchier x grandiflora APPLE SERVICEBERRY	8' Ht.	Multi-Stem
BN	6	Betula nigra 'Cully' HERITAGE RIVER BIRCH	10' Ht.	Multi-Stem
CC	11	Cercis canadensis EASTERN REDBUD	8' Ht.	Multi-Stem
EVERGREEN TREES				
AC	6	Abies concolor WHITE FIR	8' Ht.	
PG	6	Picea glauca var. densata BLACK HILLS SPRUCE	8' Ht.	
PS	6	Pinus strobus WHITE PINE	8' Ht.	
DECIDUOUS SHRUBS				
CF	15	Cornus sericea 'Farrow' ARCTIC FIRE REDTWIG DOGWOOD	24" Tall	3' O.C.
HM	6	Hydrangea macrophylla 'Ballerina' ENDLESS SUMMER HYDRANGEA	24" Tall	3' O.C.
SM	12	Syringa meyeri 'Palibin' DNARF KOREAN LILAC	30" Tall	3' O.C.
VJ	23	Viburnum x juddii JUDD VIBURNUM	30" Tall	4' O.C.
WF	22	Weigela florida 'Bramwell' FINE WINE WEIGELA	24" Tall	3' O.C.
EVERGREEN SHRUBS				
BG	14	Buxus 'Glencoe' CHICAGOLAND GREEN BOXWOOD	24" Wide	3' O.C.
JK	51	Juniperus chinensis 'Kallays Compact' KALLAYS COMPACT SPITZER JUNIPER	30" Wide	4' O.C.
JB	14	Juniperus sabinio 'Blue Forest' BLUE FOREST JUNIPER	24" Wide	3' O.C.
TM	25	Taxus x media 'Densiformis' DENSE YEW	24" Wide	4' O.C.
ORNAMENTAL GRASSES				
CK	133	Calamagrostis x acutiflora 'Karl Foerster' FEATHER REED GRASS	#1	30" O.C.
PV	35	Panicum virgatum 'Northwind' NORTHWIND SWITCHGRASS	#1	30" O.C.
SS	67	Schizachyrium scoparium 'Twilight Zone' TWILIGHT LITTLE BLUESTEM	#1	24" O.C.
SH	49	Sporobolus heterolepis PRAIRIE DROPSEED	#1	24" O.C.



GENERAL NOTES

- Trees shall be installed a minimum of five (5) feet horizontally from underground electrical feeders, storm sewers, sanitary sewers, utility mains, and water services. Trees shall be installed a minimum of ten (10) feet horizontally from utility structures and appurtenances, including, but not limited to, manholes, valve vaults, valve boxes and fire hydrants. No trees, shrubs or obstacles will be allowed 10' in front of, 5' on the sides, and 7' to the rear of the electrical transformer.
- Contractor shall verify underground utility lines and is responsible for any damage.
- Contractor shall verify all existing conditions in the field prior to construction and shall notify landscape architect of any variances.
- Material quantities shown are for contractors convenience only. The Contractor must verify all material and supply sufficient materials to complete the job per plan.
- The landscape architect reserves the right to inspect trees and shrubs either at place of growth or at site before planting, for compliance with requirements of variety, size and quality.
- Work shall conform to American Standard for Nursery Stock, State of Illinois Horticultural Standards, and Local Municipal requirements.
- Contractor shall secure and pay for all permits, fees, and inspections necessary for the proper execution of this work and comply with all codes applicable to this work.
- See General Conditions and Specifications for landscape work for additional requirements.



GARY R. WEBER ASSOCIATES, INC.
LANDSCAPE ARCHITECTS
1445 S. MAIN STREET
SUITE 108
EAST DUNDEE, ILLINOIS 60118
PH: 815.481.1111
WWW.GRWA-ARCH.COM

CLIENT: **LENNAR**

1445 S. MAIN STREET
SUITE 108
EAST DUNDEE, ILLINOIS 60118

ENGINEER: **MACQUE CONSULTANTS, LLC**
9875 W. HIGGINS ROAD
SUITE 500
ROSEMONT, IL 60018

NAPERVILLE CROSSINGS
NAPERVILLE, ILLINOIS
OVERALL LANDSCAPE PLAN

1 REVISIONS 8.08.2019

DATE: 6.11.2019
PROJECT NO.: LN1909
DRAWN: GFB
CHECKED: MIGM
SHEET NO.:

1 OF 11

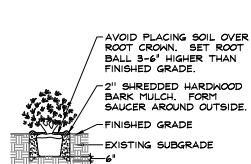


CITY PROJECT NUMBER: #19-1000008

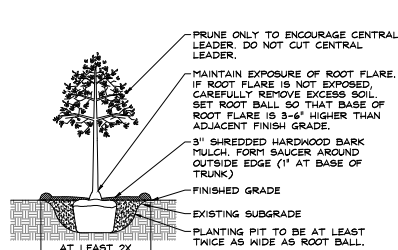
PLANTING DETAILS



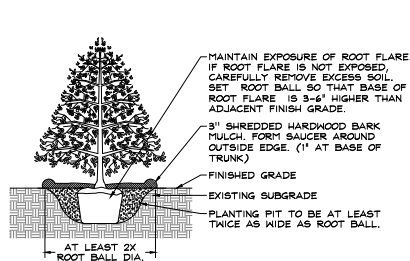
PERENNIALS AND GROUNDCOVERS



DECIDUOUS AND EVERGREEN SHRUBS



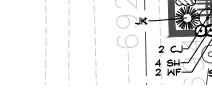
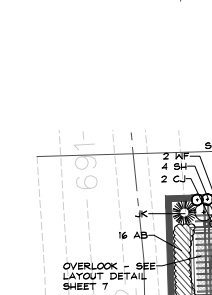
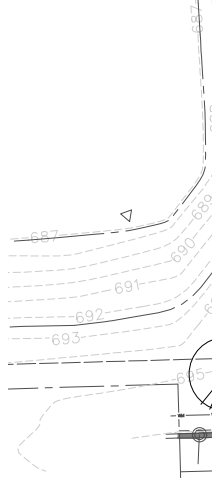
DECIDUOUS TREES



EVERGREEN TREES



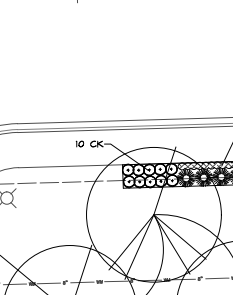
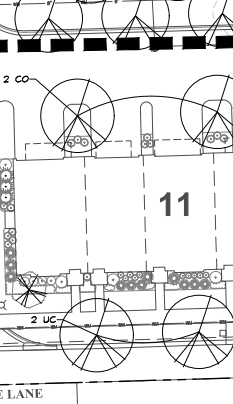
OVERLOOK - SEE DETAIL THIS SHEET



OVERLOOK LANDSCAPE DETAIL

SCALE: 1"=10'

WEST OPEN SPACE SEE DETAIL THIS SHEET

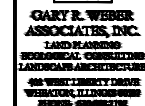


WEST OPEN SPACE LANDSCAPE DETAIL

SCALE: 1"=10'

*SEE SHEET 7 FOR AMENITY LAYOUT PLAN

QTY PROJECT NUMBER: #19-1000008



1141 E. MAIN STREET
SUITE 108
EAST DUNDEE, ILLINOIS 60118

ENGINEER
MACKIE CONSULTANTS, LLC
9575 W. HIGGINS ROAD
SUITE 500
ROSEMONT, IL 60018

NAPERVILLE CROSSINGS

NAPERVILLE, ILLINOIS

LANDSCAPE PLAN

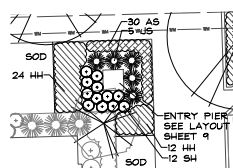
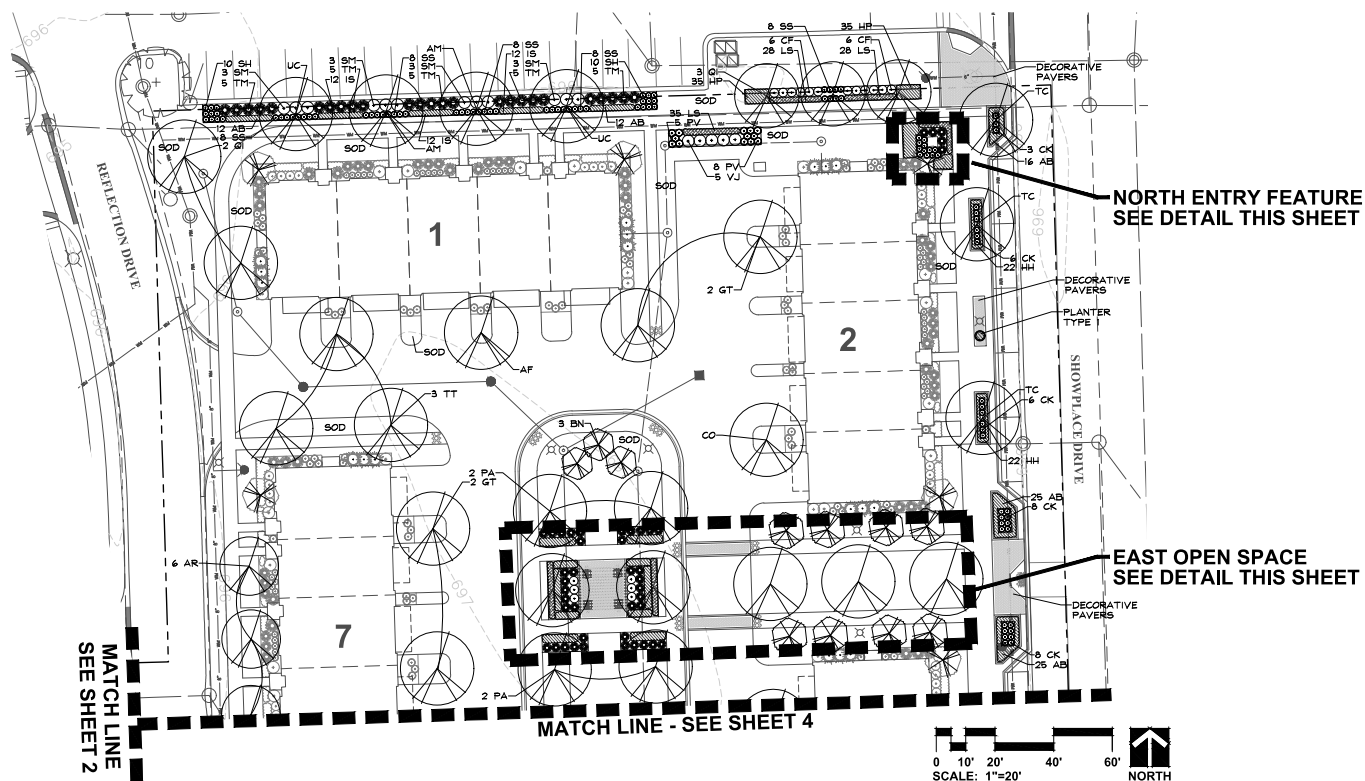
1 8.08.2019

DATE	6.11.2019
PROJECT NO.	LN1935
DRAWN	GFE
CHECKED	MGM
SHEET NO.	

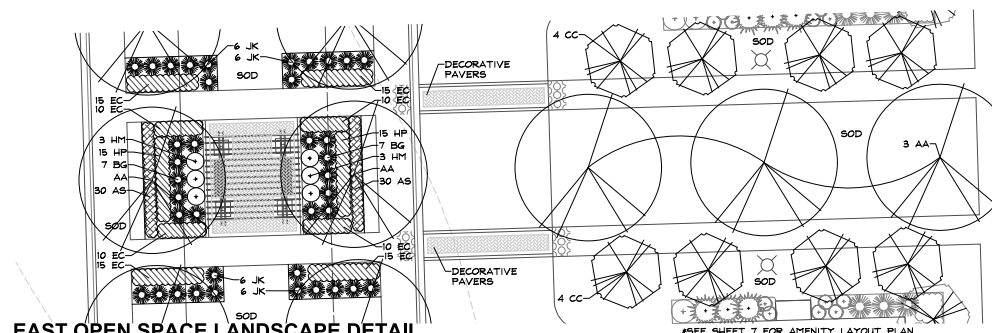
3 OF 11



CITY PROJECT NUMBER: #19-1000006



**NORTH ENTRY FEATURE
LANDSCAPE DETAIL**
SCALE: 1"=10'



EAST OPEN SPACE LANDSCAPE DETAIL
SCALE: 1"=10'



**GARY R. WEBER
ASSOCIATES, INC.**
LAND PLANNING
GEOTECHNICAL CONSULTING
LANDSCAPE ARCHITECTURE
444 WEST 12TH STREET
CHICAGO, ILLINOIS 60605
TEL: 312.467.1234
FAX: 312.467.1235

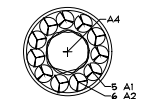
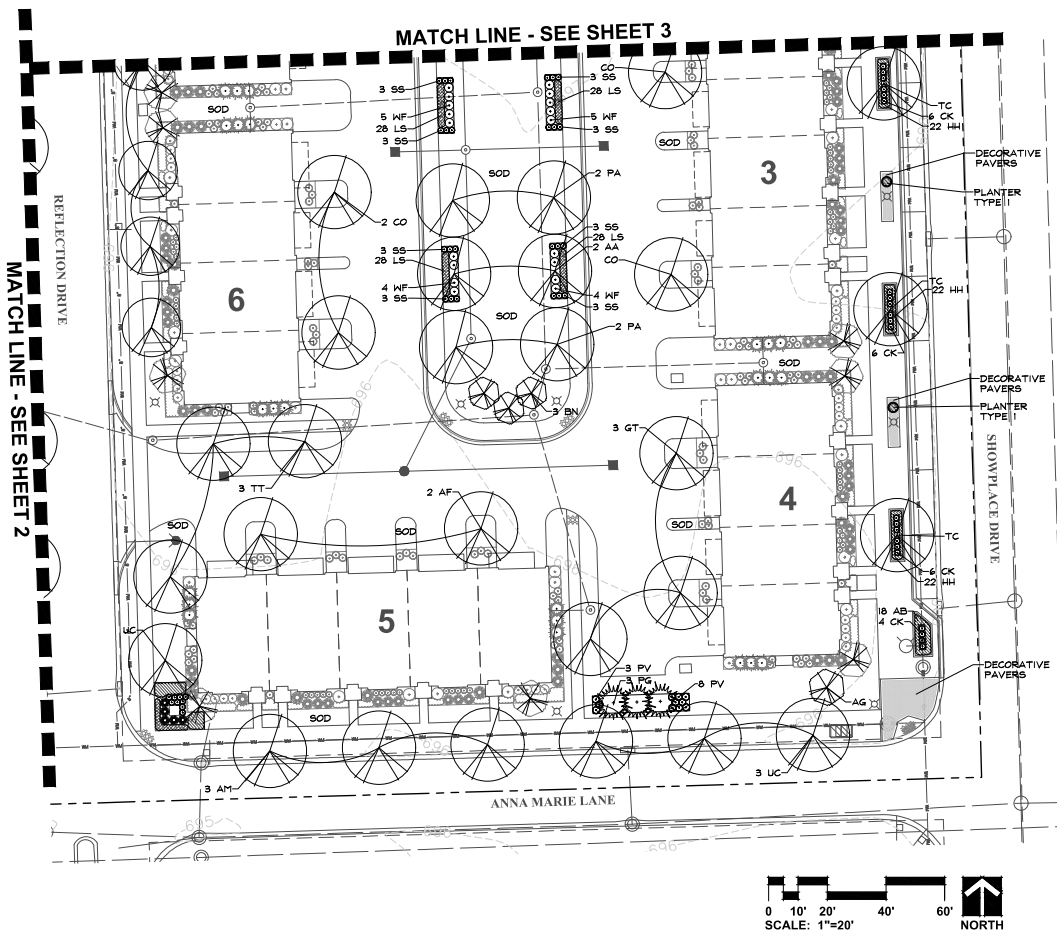
CLIENT
LENNAR

1141 E. MAIN STREET
SUITE 108
EAST DUNDEE, ILLINOIS 60118

ENGINEER
MACNIE CONSULTANTS, LLC

8675 W. HIGGINS ROAD
SUITE 500
ROSEMONT, IL 60018

NAPERVILLE CROSSINGS NAPERVILLE, ILLINOIS LANDSCAPE PLAN



TYPICAL PLANTER
SCALE: 1/2"=1'

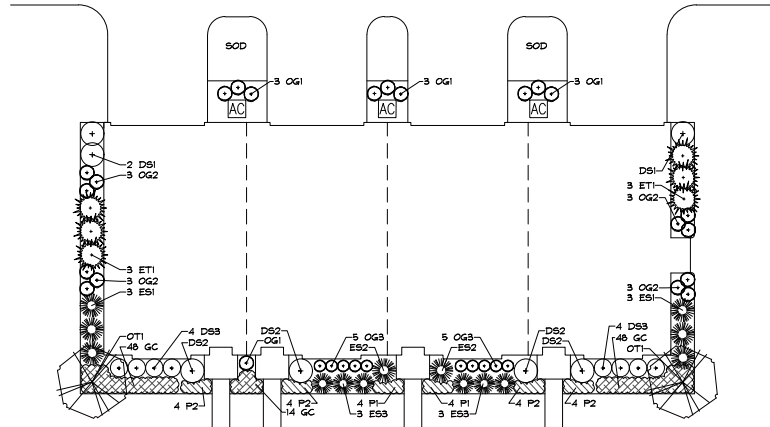
PLANTER PLANT LIST	
SPRING ANNUALS	
Key	Common Name
A1	COMPACT LILAC SUNPATIENS'
A2	DIAMOND FROST EUPHORBIA
A3	HAY-SCENTED FERN
A4	KING TUT EGYPTIAN PAPYRUS
SUMMER ANNUALS	
Key	Common Name
A1	FESTIVAL YELLOW GERBERA DAISY
A2	ASPARAGUS FERN
A3	FRENCH LAVENDER
A4	MOJITO ELEPHANT EAR
FALL ANNUALS	
Key	Common Name
A1	ORANGE SYMPHONY AFRICAN DAISY
A2	PURPLE SHEET POTATO VINE
A3	HAY-SCENTED FERN
A4	PURPLE FOUNTAIN GRASS
WINTER ANNUALS	
Key	Common Name
A1	TOKYO PINK ORNAMENTAL CABBAGE
A2	JUNIPER # BOXWOOD BRANCHES
A3	RED DOGWOOD BRANCHES
A4	HOLLY # BIRCH BRANCHES

TOWNHOME PLANT LIST - A (BLDG. 7, 10, & 12)

Key	Qty	Botanical/Common Name	Size	Remarks
ORNAMENTAL TREES				
OT1	2	Ampelopsis x grandifolia APPLE SERVICEBERRY	8' HL.	Multi-Stem
EVERGREEN TREES				
ET1	6	Thuja occidentalis 'Emerald Green' EMERALD GREEN ARBORVITAE	5' HL.	4' O.C.
DECIDUOUS SHRUBS				
DS1	3	Syringa pubescens ssp. patula 'Miss Kim' MISS KIM LILAC	30" Tall	5' O.C.
DS2	4	Cornus sericea 'Fernald' ARCTIC FIRE DOGWOOD	18" Tall	4' O.C.
DS3	6	Viburnum cerasioides 'Spice' SPICE BABY VIBURNUM	18" Tall	3' O.C.
EVERGREEN SHRUBS				
ES1	6	Taxus x media 'Densiformis' DENSE YEW	24" Wide	4' O.C.
ES2	2	Buxus x 'Glenn's' CHICAGO LAND BOWWOOD	24" Wide	4' O.C.
ES3	6	Juniperus x phytoloba 'Kitty's Compact' KALLY'S COMPACT PYTHOLOT JUNIPER	24" Wide	3.5' O.C.
PERENNIALS				
PI	6	Hemerocallis 'Little Wine Cup' LITTLE WINE CUP DAYLILY	#1	18" O.C.
P2	16	Geranium x 'Bridalmaid' BROOKSIDE GERANIUM	#1	18" O.C.
ORNAMENTAL GRASSES				
OG1	10	Colemanella x 'softly' Karl Foerster' FEATHER REED GRASS	#1	24" O.C.
OG2	12	Panicum virgatum 'Reynolds Blue' RED SWITCH GRASS	#1	24" O.C.
OG3	10	Panicum virgatum 'Majesty' MAJESTY PRAIRIE BLUE GRASS	#1	24" O.C.
GROUND COVER				
GC	10	Viola x 'Dart's Blue' DART'S BLUE PERIWINKLE	#8P4	12" O.C.
MISC. MATERIALS				
7.5		SHREDDED HARDWOOD MULCH	C.Y.	

TOWNHOME PLANT LIST - B (BLDG. 3, 6, & 11)

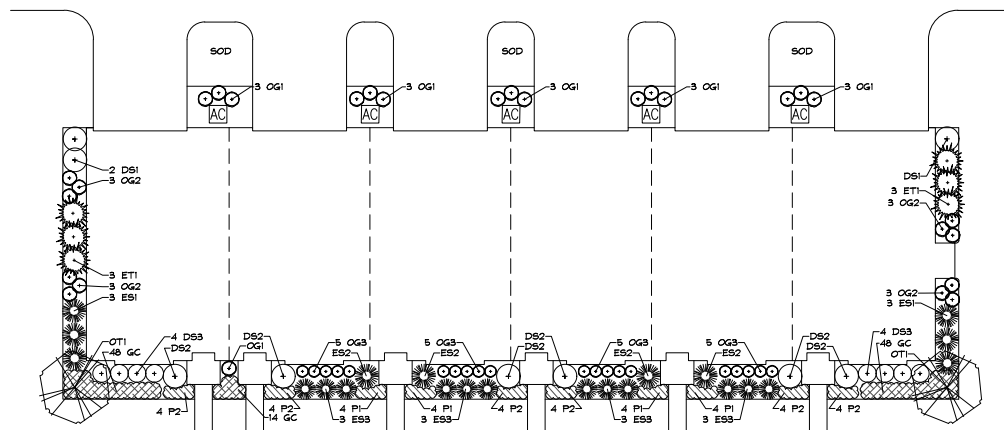
Key	Qty	Botanical/Common Name	Size	Remarks
ORNAMENTAL TREES				
OT1	2	Ampelopsis x grandifolia APPLE SERVICEBERRY	8' HL.	Multi-Stem
EVERGREEN TREES				
ET1	6	Thuja occidentalis 'Emerald Green' EMERALD GREEN ARBORVITAE	5' HL.	4' O.C.
DECIDUOUS SHRUBS				
DS1	3	Syringa pubescens ssp. patula 'Miss Kim' MISS KIM LILAC	30" Tall	5' O.C.
DS2	4	Cornus sericea 'Fernald' ARCTIC FIRE DOGWOOD	18" Tall	4' O.C.
DS3	6	Viburnum cerasioides 'Spice' SPICE BABY VIBURNUM	18" Tall	3' O.C.
EVERGREEN SHRUBS				
ES1	6	Taxus x 'Glenn's' CHICAGO LAND BOWWOOD	24" Wide	4' O.C.
ES2	2	Buxus x 'Glenn's' CHICAGO LAND BOWWOOD	24" Wide	4' O.C.
ES3	6	Juniperus chinensis 'Dai's Frost' DAI'S FROSTED JUNIPER	24" Wide	3.5' O.C.
PERENNIALS				
PI	6	Hemerocallis 'Happy Returns' HAPPY RETURNS DAYLILY	#1	18" O.C.
P2	16	Geranium x 'Bridalmaid' BROOKSIDE GERANIUM	#1	18" O.C.
ORNAMENTAL GRASSES				
OG1	10	Colemanella x 'softly' Karl Foerster' FEATHER REED GRASS	#1	24" O.C.
OG2	12	Panicum virgatum 'Reynolds Blue' RED SWITCH GRASS	#1	24" O.C.
OG3	10	Panicum virgatum 'Majesty' MAJESTY PRAIRIE BLUE GRASS	#1	24" O.C.
GROUND COVER				
GC	10	Viola x 'Dart's Blue' DART'S BLUE PERIWINKLE	#8P4	12" O.C.
MISC. MATERIALS				
7.5		SHREDDED HARDWOOD MULCH	C.Y.	



TYPICAL 4 UNIT FOUNDATION PLAN
SCALE: 1"=10'

TOWNHOME PLANT LIST - A (BLDG. 9)

Key	Qty	Botanical/Common Name	Size	Remarks
ORNAMENTAL TREES				
OT1	2	Ampelopsis x grandifolia APPLE SERVICEBERRY	8' HL.	Multi-Stem
EVERGREEN TREES				
ET1	6	Thuja occidentalis 'Emerald Green' EMERALD GREEN ARBORVITAE	5' HL.	4' O.C.
DECIDUOUS SHRUBS				
DS1	3	Syringa pubescens ssp. patula 'Miss Kim' MISS KIM LILAC	30" Tall	5' O.C.
DS2	4	Cornus sericea 'Fernald' ARCTIC FIRE DOGWOOD	18" Tall	4' O.C.
DS3	6	Viburnum cerasioides 'Spice' SPICE BABY VIBURNUM	18" Tall	3' O.C.
EVERGREEN SHRUBS				
ES1	6	Taxus x 'Glenn's' CHICAGO LAND BOWWOOD	24" Wide	4' O.C.
ES2	4	Buxus x 'Glenn's' CHICAGO LAND BOWWOOD	24" Wide	4' O.C.
ES3	6	Juniperus chinensis 'Dai's Frost' DAI'S FROSTED JUNIPER	24" Wide	3.5' O.C.
PERENNIALS				
PI	16	Geranium x 'Bridalmaid' BROOKSIDE GERANIUM	#1	18" O.C.
P2	16	Geranium x 'Bridalmaid' BROOKSIDE GERANIUM	#1	18" O.C.
ORNAMENTAL GRASSES				
OG1	10	Colemanella x 'softly' Karl Foerster' FEATHER REED GRASS	#1	24" O.C.
OG2	12	Panicum virgatum 'Reynolds Blue' RED SWITCH GRASS	#1	24" O.C.
OG3	10	Panicum virgatum 'Majesty' MAJESTY PRAIRIE BLUE GRASS	#1	24" O.C.
GROUND COVER				
GC	10	Viola x 'Dart's Blue' DART'S BLUE PERIWINKLE	#8P4	12" O.C.
MISC. MATERIALS				
7.5		SHREDDED HARDWOOD MULCH	C.Y.	



TYPICAL 6 UNIT FOUNDATION PLAN
SCALE: 1"=10'



**GARY R. WEBER
ASSOCIATES, INC.**
LAND PLANNING
LANDSCAPE ARCHITECTURE
444 WEST 12TH STREET
CHICAGO, ILLINOIS 60605
PHONE: 312.467.1234

CLIENT
LENNAR
1141 S. MAIN STREET
SUITE 108
EAST DUNDEE, ILLINOIS 60118

ENGINEER
MACKEY CONSULTANTS, LLC
8675 W. HEGENS ROAD
SUITE 500
ROSEMONT, IL 60018

NAPERVILLE CROSSINGS
NAPERVILLE, ILLINOIS
TYPICAL FOUNDATION PLANS

1 8.08.2019
REVISIONS

DATE 6.11.2019
PROJECT NO. LN1909
DRAWN GFB
CHECKED MIGM
SHEET NO.

5 OF 11

CITY PROJECT NUMBER: #19-1000008



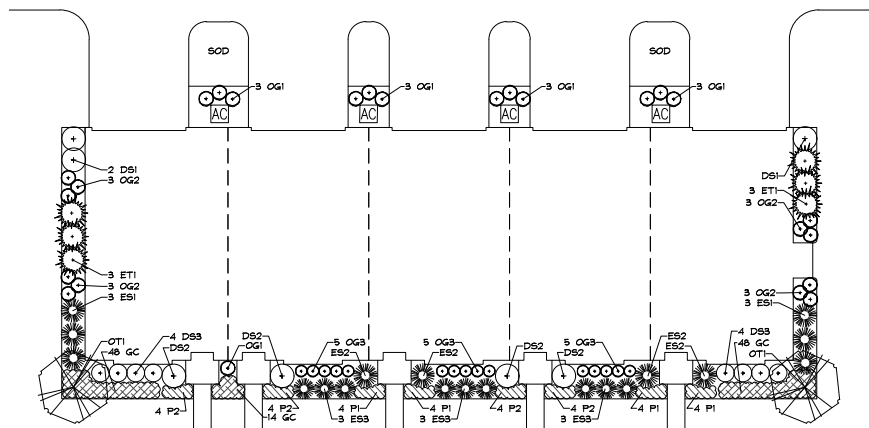


GARY R. WEBER
ASSOCIATES, INC.
LAND PLANNING
BOTANICAL CONSULTING
LANDSCAPE ARCHITECTURE
446 WEST 12TH STREET
CHICAGO, ILLINOIS 60605
PHONE: 312.467.1234

CLIENT
LENNAR
1141 S. MAIN STREET
SUITE 108
EAST DUNDEE, ILLINOIS 60118

ENGINEER
MACKE CONSULTANTS, LLC
9875 W. HIGGINS ROAD
SUITE 500
ROSEMONT, IL 60018

NAPERVILLE CROSSINGS NAPERVILLE, ILLINOIS TYPICAL FOUNDATION PLANS



TYPICAL 5 UNIT FOUNDATION PLAN
SCALE: 1"=10'

TOWNHOME PLANT LIST - A (BLDG. 2 & 4)

Key	Gty	Botanical/Common Name	Size	Remarks
OG1	2	ORNAMENTAL TREES <i>Ampelopsis x grandiflora</i> APPLE SERVICEBERRY	8' HL	Multi-Stem
ET1	6	EVERGREEN TREES <i>Thuja occidentalis 'Emerald'</i> EMERALD GREEN ARBORVITAE	5' HL	4' O.C.
DS1	3	DECIDUOUS SHRUBS <i>Syringa pubescens</i> ssp. <i>patula</i> 'Miss Kim' MISS KIM LILAC	30" Tall	5' O.C.
DS2	4	<i>Hamamelis virginica</i> LITTLE HENRY VIRGINIA SHEETSPIRE	18" Tall	4' O.C.
DS3	6	<i>Hydrangea macrophylla 'Belmont'</i> ENDLESS SUMMER HYDRANGEA	18" Tall	3' O.C.
ES1	6	EVERGREEN SHRUBS <i>Taxus x media 'Danaeformis'</i> DENSE YEW	24" Wide	4' O.C.
ES2	4	<i>Buxa x 'Glaucosa'</i> CHICAGO LUSTRE ARBORVITAE	24" Wide	4' O.C.
ES3	4	<i>Juniperus chinensis 'Gold Lace'</i> GOLD LACE JUNIPER	24" Wide	3.5' O.C.
P1	16	PERENNIALS <i>Allium trianthemum</i> 'Summer Beauty' SUMMER BEAUTY ORNAMENTAL ONION	#1	18" O.C.
P2	16	<i>Hosta x 'Patriot'</i> PATRIOT HOSTA	#1	18" O.C.
OG2	12	ORNAMENTAL GRASSES <i>Panicum virgatum 'Natchez'</i> NORTLAND SWITCHGRASS	#1	24" O.C.
OG3	12	<i>Coleragrostis amabilis</i> KOREAN FEATHER REED GRASS	#1	24" O.C.
OG4	12	<i>Stachytarpheta jamaicensis</i> 'Purple Rush' PURPLE RUSH	#1	24" O.C.
GC	10	GROUND COVER <i>Viola minor 'Dark Blue'</i> DARK'S BLUE PERIWINKLE	#SP4	12" O.C.
MS	5.5	MISC. MATERIALS SHREDDED HARDWOOD MULCH	C.Y.	

TOWNHOME PLANT LIST - B (BLDG. 1 & 8)

Key	Gty	Botanical/Common Name	Size	Remarks
OG1	2	ORNAMENTAL TREES <i>Cornus mas</i> CORNELIAN CHERRY DOGWOOD	8' HL	Multi-Stem
ET1	6	EVERGREEN TREES <i>Thuja occidentalis 'Belmont'</i> EMERALD GREEN ARBORVITAE	5' HL	4' O.C.
DS1	3	DECIDUOUS SHRUBS <i>Viburnum dentatum</i> 'Symonds' CHICAGO LUSTRE ARBORVITAE	30" Tall	5' O.C.
DS2	4	<i>Hamamelis virginica</i> LITTLE HENRY VIRGINIA SHEETSPIRE	18" Tall	4' O.C.
DS3	6	<i>Hydrangea macrophylla 'Belmont'</i> ENDLESS SUMMER HYDRANGEA	18" Tall	3' O.C.
ES1	6	EVERGREEN SHRUBS <i>Taxus x 'Glaucosa'</i> CHICAGO LUSTRE ARBORVITAE	24" Wide	4' O.C.
ES2	4	<i>Buxa x 'Glaucosa'</i> CHICAGO LUSTRE ARBORVITAE	24" Wide	4' O.C.
ES3	4	<i>Juniperus chinensis 'Blue Pacific'</i> BLUE PACIFIC JUNIPER	24" Wide	3.5' O.C.
P1	16	PERENNIALS <i>Hebe x 'Patriot'</i> PATRIOT HOSTA	#1	18" O.C.
P2	16	<i>Hosta x 'Patriot'</i> PATRIOT HOSTA	#1	18" O.C.
OG1	12	ORNAMENTAL GRASSES <i>Panicum virgatum 'Natchez'</i> NORTLAND SWITCHGRASS	#1	24" O.C.
OG2	12	<i>Coleragrostis amabilis</i> KOREAN FEATHER REED GRASS	#1	24" O.C.
OG3	12	<i>Stachytarpheta jamaicensis</i> 'Purple Rush' PURPLE RUSH	#1	24" O.C.
GC	10	GROUND COVER <i>Viola minor 'Dark Blue'</i> DARK'S BLUE PERIWINKLE	#SP4	12" O.C.
MS	5.5	MISC. MATERIALS SHREDDED HARDWOOD MULCH	C.Y.	

TOWNHOME PLANT LIST - C (BLDG. 5)

Key	Gty	Botanical/Common Name	Size	Remarks
OG1	2	ORNAMENTAL TREES <i>Syringa reticulata</i> JAPANESE TREE LILAC	8' HL	Multi-Stem
ET1	6	EVERGREEN TREES <i>Thuja occidentalis 'Emerald'</i> EMERALD GREEN ARBORVITAE	5' HL	4' O.C.
DS1	3	DECIDUOUS SHRUBS <i>Viburnum x 'Juddi'</i> JUDO VIBURNUM	30" Tall	5' O.C.
DS2	4	<i>Hamamelis virginica</i> LITTLE HENRY VIRGINIA SHEETSPIRE	18" Tall	4' O.C.
DS3	6	<i>Hydrangea macrophylla 'Belmont'</i> ENDLESS SUMMER HYDRANGEA	18" Tall	3' O.C.
ES1	6	EVERGREEN SHRUBS <i>Taxus x media 'Danaeformis'</i> DENSE YEW	24" Wide	4' O.C.
ES2	4	<i>Buxa x 'Glaucosa'</i> CHICAGO LUSTRE ARBORVITAE	24" Wide	4' O.C.
ES3	4	<i>Juniperus chinensis 'Blue Pacific'</i> BLUE PACIFIC JUNIPER	24" Wide	3.5' O.C.
P1	16	PERENNIALS <i>Hebe x 'Patriot'</i> PATRIOT HOSTA	#1	18" O.C.
P2	16	<i>Hosta x 'Patriot'</i> PATRIOT HOSTA	#1	18" O.C.
OG1	12	ORNAMENTAL GRASSES <i>Panicum virgatum 'Natchez'</i> NORTLAND SWITCHGRASS	#1	24" O.C.
OG2	12	<i>Coleragrostis amabilis</i> KOREAN FEATHER REED GRASS	#1	24" O.C.
OG3	12	<i>Stachytarpheta jamaicensis</i> 'Purple Rush' PURPLE RUSH	#1	24" O.C.
GC	10	GROUND COVER <i>Viola minor 'Dark Blue'</i> DARK'S BLUE PERIWINKLE	#SP4	12" O.C.
MS	5.5	MISC. MATERIALS SHREDDED HARDWOOD MULCH	C.Y.	

1 8.08.2019
REVISIONS

DATE 6.11.2019
PROJECT NO. LN1909
DRAWN GFB
CHECKED MCM
SHEET NO.



6 OF 11

CITY PROJECT NUMBER: #19-1000008



**GARY R. WEBER
ASSOCIATES, INC.**
LAND PLANNING
LANDSCAPE ARCHITECTURE
446 WEST LEXINGTON DRIVE
WILSON, ILLINOIS 60190
TEL: 630.352.1234

CLIENT
LENNAR

1141 S. MAIN STREET
SUITE 108
EAST DUNDEE, ILLINOIS 60118

ENGINEER
MACNE CONSULTANTS, LLC
9875 W. HIGGINS ROAD
SUITE 500
ROSEMONT, IL 60018

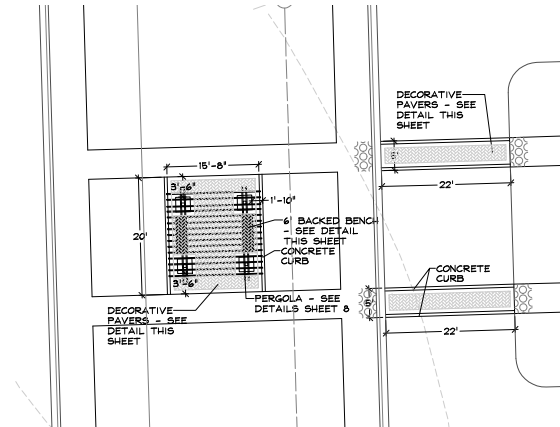
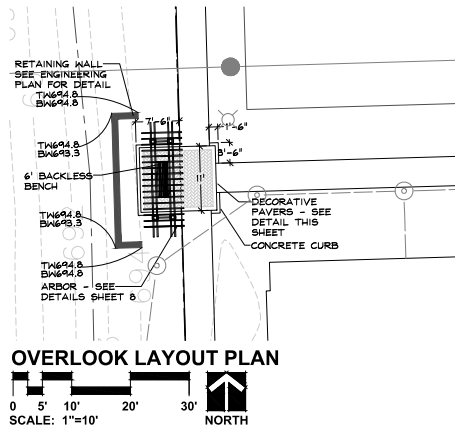
NAPERVILLE CROSSINGS NAPERVILLE, ILLINOIS AMENITY LAYOUT PLANS

1 8.08.2019
REVISIONS

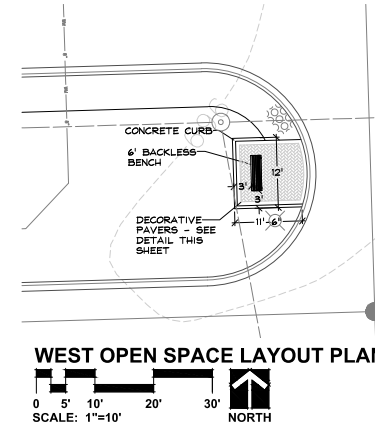
DATE 6.11.2019
PROJECT NO. LN1909
DRAWN GFB
CHECKED MIM
SHEET NO.

7 OF 11

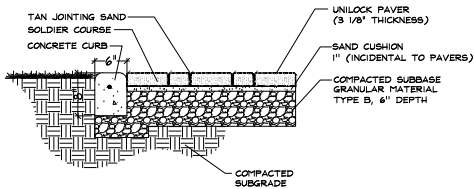
CITY PROJECT NUMBER: #19-10000008



EAST OPEN SPACE LAYOUT PLAN
SCALE: 1"=10' NORTH

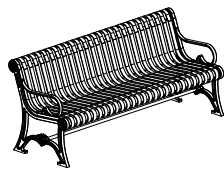


WEST OPEN SPACE LAYOUT PLAN
SCALE: 1"=10' NORTH



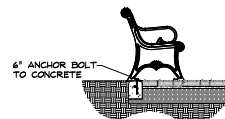
DECORATIVE PAVER DETAIL
SCALE: NTS

PAVER NOTES:
MANUFACTURER: UNILOCK
PAVER UNIT: HOLLANDSTONE
PAVER COLOR: TO MATCH EXISTING
PAVER PATTERN: HERRINGBONE
INSTALL PER MANUFACTURER'S SPECIFICATIONS.



6' BENCH DETAILS
SCALE: NTS

DUMOR SITE FURNISHINGS
MODEL: BENCH 56 (6' BENCH)
COLOR: BLACK
MOUNTING: SURFACE
INSTALL PER MANUFACTURER'S SPECIFICATIONS



BENCH MOUNTING DETAIL
SCALE: NTS

SITE FURNISHING SCHEDULE

ITEM	MANUFACTURER	MODEL	QUANTITY	COMMENTS/CONTACT
6' BACKED BENCH	DUMOR	56	2	COLOR: BLACK
6' BACKLESS BENCH	DUMOR	92	2	COLOR: BLACK SURFACE MOUNT
DECORATIVE PAVERS	UNILOCK	HOLLANDSTONE	1,432 S.F.	COLOR: TO MATCH EXISTING SHOWPLACE DRIVE STREETSCAPE
CONCRETE CURB			234 L.F.	
RETAINING WALL	UNILOCK	LINEO STONE	60 F.F.	COLOR: SIERRA COPING: LEDGESTONE - BUFF SEE ENGINEERING PLANS FOR DETAIL
PERGOLA			1	STAIN ONE-YEAR AFTER INSTALLATION
ARBOR			1	STAIN ONE-YEAR AFTER INSTALLATION
PLANTER - TYPE 1	LANDSCAPE FORMS	ROSA - 42"	3	COLOR: MILLSTONE SIZE: 42" x 13" x 63 Gal.
UPLIGHT	KICHLER	LED ACCENT LIGHT	5	16207AZT42



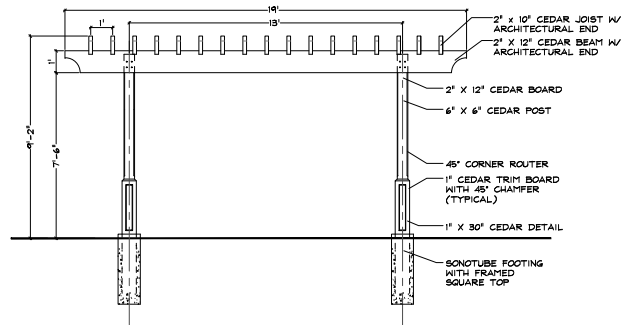
**GARY R. WEBER
ASSOCIATES, INC.**
LAND PLANNING
LANDSCAPE ARCHITECTURE
LANDSCAPE ARCHITECTURE
444 WILKINSON DRIVE
BLOOMINGTON, ILLINOIS 61820
PHONE: 848-0000

CLIENT
LENNAR

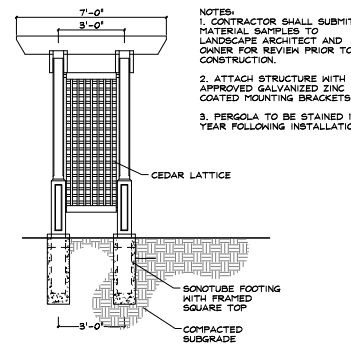
1141 S. MAIN STREET
SUITE 108
EAST DUNDEE, ILLINOIS 60118

ENGINEER
MACIE CONSULTANTS, LLC
8675 W. HIGGINS ROAD
SUITE 500
ROSEMONT, IL 60018

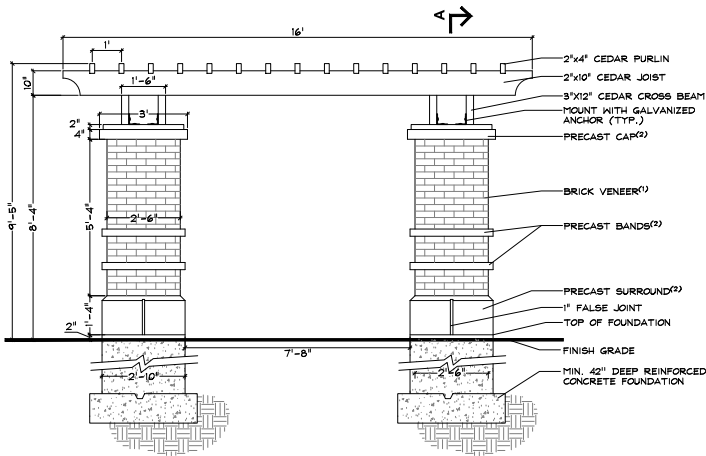
NAPERVILLE CROSSINGS NAPERVILLE, ILLINOIS AMENITY DETAILS



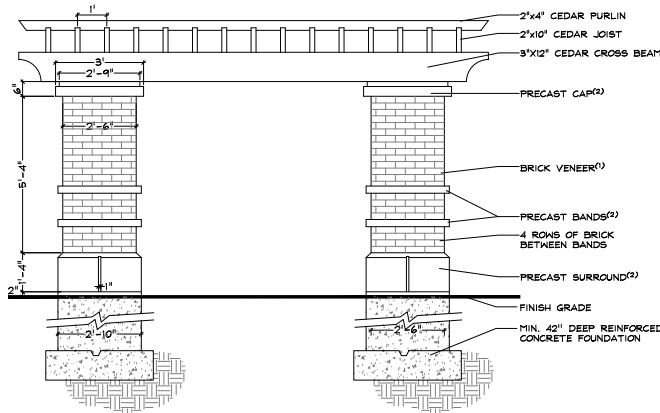
ARBOR DETAILS
SCALE: NTS



- NOTES:
1. CONTRACTOR SHALL SUBMIT MATERIAL SAMPLES TO LANDSCAPE ARCHITECT AND OWNER FOR REVIEW PRIOR TO CONSTRUCTION.
2. ATTACH STRUCTURE WITH APPROVED GALVANIZED ZINC COATED MOUNTING BRACKETS
3. PERGOLA TO BE STAINED 1 YEAR FOLLOWING INSTALLATION.

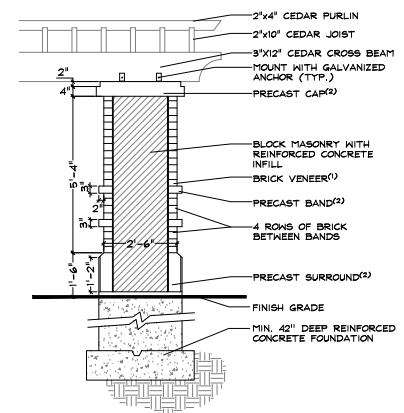


NORTH / SOUTH ELEVATION
PERGOLA DETAILS
SCALE: 1/2"=1'-0"



EAST / WEST ELEVATION

- (1) BRICK VENEER
MANUFACTURER: BELDEN
STYLE: BERWICK RED RANGE
SIZE: STANDARD
(2) PRECAST CONCRETE
COLOR: LIMESTONE OR
APPROVED EQUAL

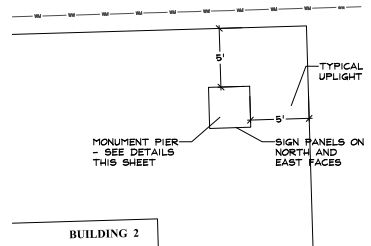


SECTION A-A'

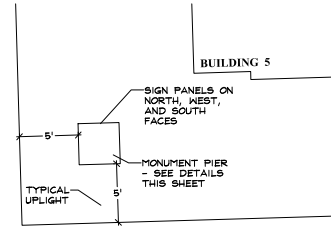
1 8.08.2019
REVISIONS

DATE 6.11.2019
PROJECT NO. LN1909
DRAWN GFB
CHECKED MIGM
SHEET NO.

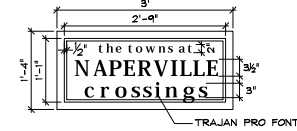
8 OF 11



NORTH MONUMENT LAYOUT PLAN
SCALE: 1"=5'

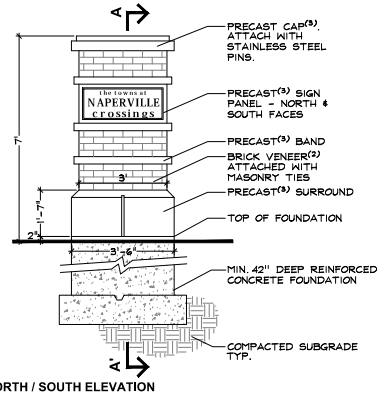


SOUTHWEST MONUMENT LAYOUT PLAN
SCALE: 1"=5'

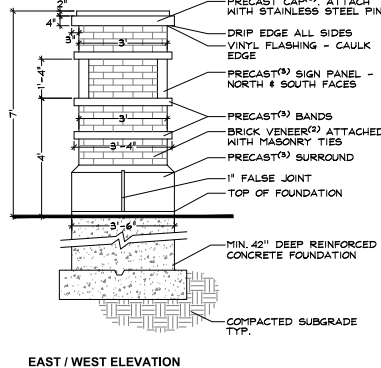


SIGN PANEL DETAIL
SCALE: 1"=1'-0"

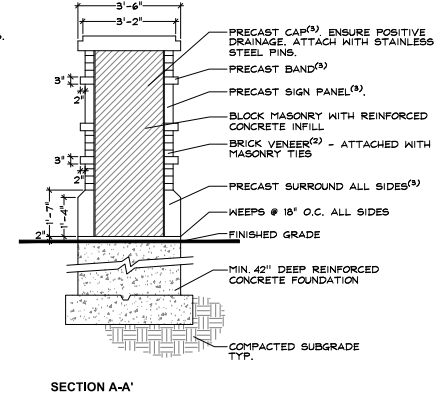
- (1) BRICK VENEER MANUFACTURER: BELDEN STYLE: BERWICK RED RANGE SIZE: STANDARD
- (2) PRECAST CONCRETE COLOR: LIMESTONE OR APPROVED EQUAL



MONUMENT PIER DETAILS
SCALE: 1/2"=1'-0"



EAST / WEST ELEVATION



SECTION A-A'

ENTRANCE MONUMENT SPECIFICATIONS

- 1.0 DESCRIPTION OF WORK
 - A. The work consists of all labor, materials, work and equipment necessary and required to complete monuments, fence and foundations as shown on drawings or specified herein, including, but not limited to:
 1. Submission of color and material samples
 2. Submission of shop drawings
 3. Submission of construction schedule
 4. Verification of existing conditions and underground utilities
 5. Secure and pay for all permits, fees, inspections and schedule all inspections related to work, including J.U.L.I.E. losses.
 6. Comply with all applicable codes
- 2.0 QUALITY ASSURANCE
 - A. Construction shall conform to Building Code Requirements for Engineered Brick Masonry, BIA, latest edition.
 - B. All brick and stone shall be finest architectural grade free of cracks, chips, defects, etc.
 - C. Installation shall be by a company continuously and regularly employed in the installation of brick and stone monuments for a period of at least 5 consecutive years.
 - D. No masonry shall be laid when the temperature is expected to fall below 40 degrees F, unless suitable means, submitted in writing to the owner, are provided to heat materials and protect the work. Protect work from cold and frost and insure that mortar will harden without freezing. No additives shall be used, unless approved in writing by the owner.
 - E. All corners of monuments and plans are to be staked by engineer and verified by the contractor.
- 3.0 JOB CONDITIONS
 - A. Examine and evaluate grades, and soils. Provide soil testing and verify soils structural integrity. Observe the conditions under which work is to be performed and notify the owner of unsatisfactory conditions. Do not proceed with the work until unsatisfactory conditions have been corrected in an acceptable manner.
 - B. Utilities: Review underground utility location maps and plans. Notify J.U.L.I.E. demonstrate an awareness of utility locations and verify acceptance of liability for the protection of utilities during course of work. Contractor shall be responsible for any damage to utilities or property.
 - C. All streets and curb must be cleaned at the end of each working day.
 - D. All OSHA requirements for safety must be adhered to at all times.

- 4.0 GUARANTEES
 - A. Guarantee monuments 1 year from final acceptance on owner's representative on workmanship and materials.
 - B. Where failure has occurred resulting from the concrete not meeting the specified design strength, or workmanship, it shall be the responsibility of the subcontractors in connection with the supplier to take whatever corrective actions are necessary to eliminate the problem. In addition, it shall be their responsibility to make restitution for their resulting repair work created by the problem.
- 5.0 SUBMITTALS
 - A. Construction Schedule: After award of the Contract, the Contractor shall prepare and submit to the owner or an owner authorized representative an estimated construction progress schedule for the work, including sub-schedules of related activities which are essential to its progress, as well as lead-time for materials.
 - B. Product Samples: Submit samples of stone, architectural pre-cast, mortars and sealants, slate, light fixtures, tile, and ornamental fencing for the owner's design conformance review prior to delivery to site.
 - C. Product Data: Submit product data for stone, limestone, architectural pre-cast, mortars and joint sealants, slate, tile, light fixtures, and ornamental fencing.
 - D. Provide certificate of insurance per the owner's requirements.
 - E. Provide name and contact information for any subcontractors and suppliers.
 - F. Shop Drawings:
 1. Prepare and submit to the Owner's Representative for design conformance review complete cutting and setting drawings for all masonry work.
 2. Submit one (1) set print with following items in detail:
 - a) Size
 - b) Section
 - c) Dimensions and numbering of stone and brick.
 - d) Arrangement of joints and band.
 3. Show jointing as indicated on the contract drawings, unless modification is reviewed for design conformance by Owner's Representative prior to preparation of shop drawings.
 4. Establish jointing in accordance with industry standards and practices where not indicated on contract drawings.

- 6.0 PRODUCT DELIVERY, STORAGE, AND HANDLING
 - A. Loading and Shipment:
 1. Pack carefully for transportation, with exercise of all customary and reasonable precautions against damage in transit, all brick, and limestone to be used for the work.
 2. Load and ship all brick and cut stone in a sequence mutually agreed upon by the General Contractor and the material supplier.
 - B. Unloading and Storage:
 1. Receive and unload at site all brick and stone with necessary care in handling to avoid damage or soiling.
 2. Store brick and stone clear of ground on non-staining slides. Hood containing tannin, chemical treatment, or excessive amounts of resin shall not be used.
 3. Cover brick and stone with waterproof, clean canvas, or polyethylene for protection from construction or natural elements.
- 7.0 INSTALLATION
 - A. Mortar:
 1. Cement: white, non-staining masonry cement, conforming to ASTM-C9.
 2. Sand: Clean, sharp, and washed, capable of passing a No. 16 sieve, and in conformance with ASTM-C224. Carefully select sand for use in pointing mortar for color to match limestone. For pointing mortar, select a white sand.
 3. Lime: Hydrated, conforming to ASTM-C207, Type S.
 4. Water: Clear, non-saline, potable and free of oils, salts, and other harmful elements.
 - B. Foundation:
 1. Lay brick with full mortar coverage on horizontal and vertical joints in all courses.
 2. Provide sufficient mortar on ends of brick to completely fill head joints.
 3. Rack closure into place with head joints through against two adjacent bricks in place.
 - C. Mortar Joints:
 1. Nominal thickness: 3/8 inch.
 2. Construct uniform joints.
 3. Show vertical joints tight.

4. Tool concave joints in exposed surfaces when thumbprint hard.
5. Width, depth, and tooling of all mortar joints shall be consistent and shall not vary more than 1/8".
6. Movement Joints: Keep clean of all mortar and debris.
- E. Flashing:
 1. Install complete and continuous under stone copings and other projections.
 2. Lap joints 6". Seal entire contact surface with mastic.
 3. Provide a mortar wash at the base of the cavity, underneath the through-wall flashing, pointing etc.
 4. Cover flashing with mortar.
- F. Weepholes:
 1. Provide 3/8" cotton rope weeps. Rope weeps shall extend thru the veneer face and inside the cavity, lying on top and along the bottom length of the flashing. Cut rope flush with wall face.
 2. Maximum spacing rope weeps: 16 inches o.c., at wall base; 16 inches o.c. at lintels above openings.
 3. Keep weepholes and area above flashing free of mortar droppings.
- G.0 CLEAN UP AND PROTECTION
 - A. All material shall be washed with fiber brushes, soap powder, and clean water or Owner reviewed mechanical cleaning process.
 - B. Sand blasting, wire brushes, or acids shall not be used. Exceptions may be considered if reviewed by the Owner or an Owner authorized representative.
 - C. During work, store materials and equipment as directed by the owner.
 - D. Protect work and materials from damage due to operations by other trades and trespassers. Maintain protection during installation.
- H.0 INSPECTION AND ACCEPTANCE
 - A. The Owner and or the Owner's representative reserves the right to inspect materials and workmanship at the site prior to, during construction, or at the time of inspection for compliance with these specifications.
 - B. Notify the Owner's representative when completed, for final design conformance review.

