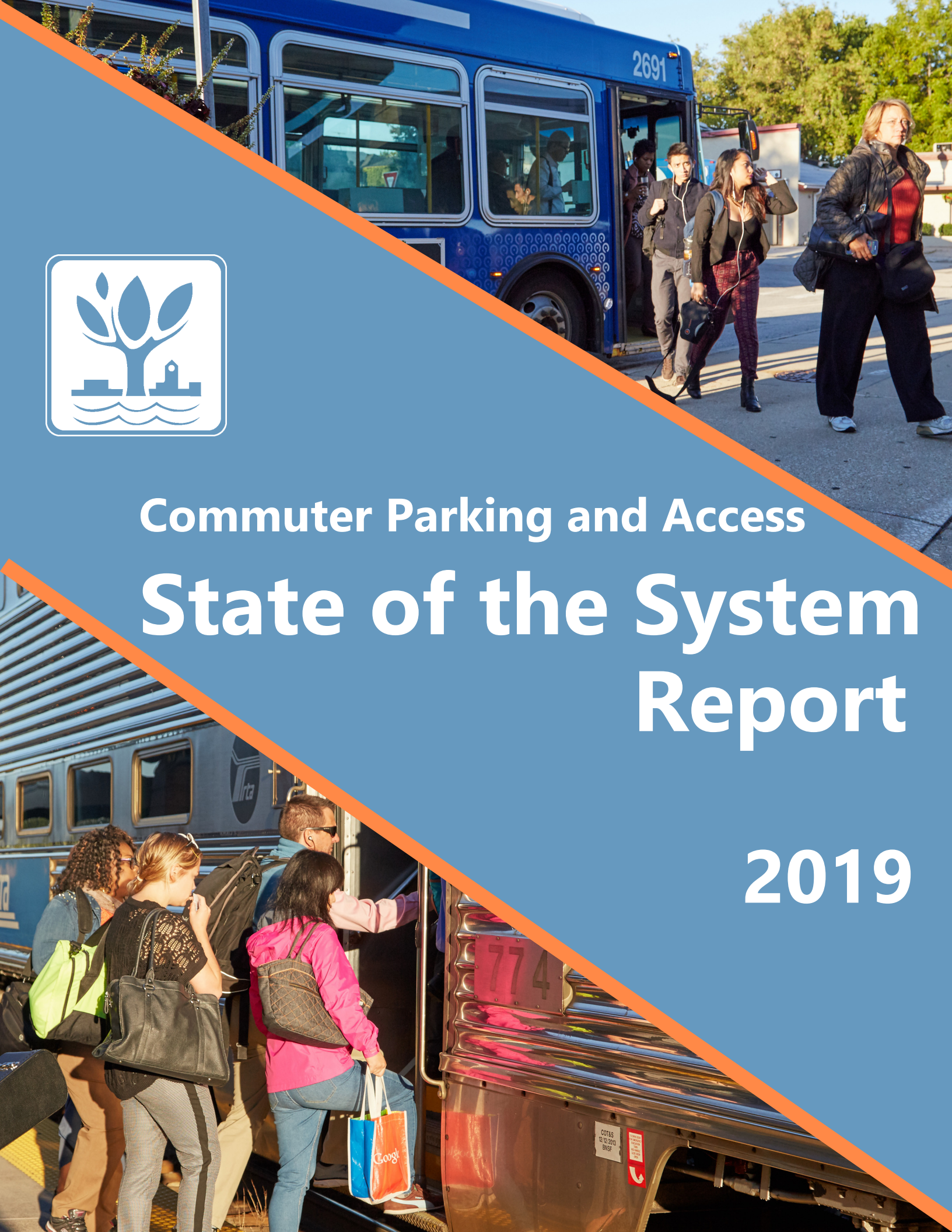




Commuter Parking and Access

State of the System Report

2019



Commuter rail service between Naperville and Chicago is provided by Metra's BNSF Railway Line. The Naperville community is served by both the Naperville and Route 59 Metra Stations, the two busiest suburban stations in Metra's entire system. These two stations provide a critical transportation link for residents of Naperville and the surrounding communities.

Providing efficient access and convenient parking for commuters using these stations has been a community challenge for decades. This report provides an overview of the current state of commuter access and parking at the two stations.

METRA SERVICE TO NAPERVILLE & ROUTE 59 STATIONS

The BNSF Railway Line is the busiest of Metra's 11 service lines. Beginning at Chicago Union Station and extending west to its terminus at the Aurora Transportation Center, the 37.5-mile route provides service to 25 outlying stations. The line is owned by BNSF and operated by the railway through a purchase of service agreement with Metra. In addition to the frequent Metra trains, the tracks also accommodate a high volume of freight service and serve Amtrak's Illinois Zephyr, Carl Sandburg, California Zephyr and Southwest Chief routes.

Naperville Metra Station

The Naperville Metra Station has been a commuter service stop for over a century. The station building is located on Fourth Avenue on the south (inbound) side of the tracks and is owned by the City of Naperville. The station is located at Mile Post 28.5 and in Fare Zone F.

Route 59 Metra Station

The Route 59 Metra Station opened in 1989 as a reliever to the Naperville Metra Station. The station building is located just west of Illinois Route 59 on the south (inbound) side of the tracks and is owned by the City of Aurora. The station is located at Mile Post 31.6 and in Fare Zone G.

Ridership

Metra conducts station boarding and alighting counts on a periodic basis. A high level of ridership at the two stations has remained consistent over the past decade, with Naperville daily ridership at almost 4,100 riders and Route 59 daily ridership at approximately 5,800 riders according to Metra's 2016 Commuter Rail System Station Boarding/Alighting Count. (A table from this report is included in the Appendix.) The high ridership is due in part to the many high-speed express trains offered during peak commuting periods.

Service

The Metra BNSF line offers frequent service between Aurora and Chicago Union Station (CUS) during weekdays (Monday through Friday). As with all Metra lines, weekend and holiday service is less frequent.

During 2018, the BNSF Railway implemented federally mandated Positive Train Control (PTC), which is a complex safety system that will automatically stop a train if the engineer fails to obey a signal or exceeds the speed limit. The implementation of PTC impacted the required operations that occur when a train completes a run and is prepared for the next, resulting in longer “flip” times. While preparing a new schedule to accommodate this, Metra and BNSF adjusted the schedule to address overcrowding on trains that specifically serve the Naperville and Route 59 Metra Stations.

To address overcrowding on the evening express trains, some of the express trains that previously ran direct from Chicago Union Station to Naperville and then Route 59 were split to distribute the passenger load. The number of trains serving the stations remained the same; however, some trips now pair the Lisle Metra Station with the Naperville Metra Station and two of the Downers Grove stations with the Route 59 Metra Station.

On weekdays, 28 inbound trains stop at both stations throughout the day, including 9 morning express trains that run directly to Chicago Union Station after stops at Aurora, Route 59 and Naperville. The morning express trains currently run on the following schedule:

Train	Depart Route 59	Depart Naperville	Arrive at CUS
1208	5:57 AM	6:04 AM	6:38 AM
1212	6:05 AM	6:13 AM	6:51 AM
1222	6:37 AM	6:44 AM	7:18 AM
1230	7:01 AM	7:10 AM	7:45 AM
1232	7:13 AM	7:21 AM	7:55 AM
1238	7:29 AM	7:37 AM	8:11 AM
1246	7:46 AM	7:54 AM	8:30 AM
1252	8:04 AM	8:12 AM	8:46 AM
1370	8:26 AM	8:34 AM	9:07 AM

Service (cont.)

On weekdays, 30 outbound trains stop at the Naperville Metra Station and 29 outbound trains stop at the Route 59 Metra Station throughout the day, including 8 afternoon and evening express trains that run from Chicago Union Station to the Naperville and Route 59 Metra Stations directly or with limited stops in between. The afternoon and evening express trains currently run on the following schedule:

Train	Depart CUS	Arrive at Naperville	Arrive at Route 59
1235	2:30 PM	3:09 PM	3:15 PM
1239	3:17 PM	3:58 PM	4:05 PM
1251	4:38 PM	5:13 PM	5:21 PM
1257	4:58 PM	5:38 PM	-
1259	5:02 PM	-	5:47 PM
1267	5:20 PM	6:00 PM	-
1269	5:28 PM	-	6:15 PM
1277	5:46 PM	6:26 PM	6:31 PM
1283	6:20 PM	6:59 PM	-
1373	6:26 PM	-	7:08 PM
1287	7:03 PM	7:44 PM	7:51 PM

REVERSE SERVICE

In addition to the robust schedule of traditional service, the Metra BNSF line offers reverse service throughout the day. The schedule currently offers 3 express reverse-commute trains during the morning from Chicago Union Station to all stations between Downers Grove Main Street and Aurora, including the Naperville and Route 59 Metra Stations, and 1 return express reverse-commute train during the evening.



COMMUTER ACCESS

The City of Naperville has historically supported a comprehensive multi-modal transportation network that provides commuters with access options to both the Naperville and Route 59 Metra Stations. Metra periodically surveys commuters to determine how they get to the train stations. Based on Metra’s 2016 Origin-Destination Survey, commuters access the Naperville and Route 59 Metra Stations through a variety of travel modes. The table to the right summarizes the mode shares at each station.

Pedestrian Access

Walking is a viable mode of access to reach the Naperville and Route 59 Metra Stations for those who live within a reasonable walking distance. Both stations are located in close proximity to numerous residences and have thorough sidewalk connectivity.

Bicycle Access

Bicycling is also a viable mode of access to the Naperville and Route 59 Metra Stations and can be an option for longer trips than walking. Bicycle routes are designated in the vicinity of both stations. Numerous bicycle racks, including many under covered shelters, are available at both stations. In addition, 10 bicycle lockers are available for rental at the Route 59 Metra Station. The cost to rent a bicycle locker is \$24 per year with a \$50 deposit.

Travel Mode	Share at Naperville	Share at Route 59
Drive Alone	48%	70%
Drop-off	19%	12%
Pace Bus	11%	5%
Walk	8%	8%
Bike	5%	1%
Carpool Passenger	3%	2%
Carpool Driver	2%	1%
Taxi	1%	0%
Ride Share (e.g. Uber, Lyft)	1%	0%
Other	2%	1%



Bus Access

Public transit within Naperville is provided by Pace Suburban Bus. Pace serves the Naperville community through fixed routes, dial-a-ride service and ADA paratransit service. While a limited number of all-day fixed routes operate within Naperville, the majority of fixed routes are commuter feeder routes that operate only on weekdays during peak commuting times. A map of Pace Suburban Bus routes within Naperville is included in the Appendix. The cost to ride Pace is \$2 with Ventra or \$2.25 with cash; therefore, a round-trip commute on Pace is \$4.

Pace Bus Service to the Naperville Metra Station

Pace Suburban Bus currently operates 18 routes that serve the Naperville Metra Station: 11 feeder routes that primarily provide service to various residential neighborhoods, 4 evening service routes that consolidate the service of multiple commuter routes for late evening trips, and 3 all-day service routes. The following table summarizes the Pace Suburban Bus routes that serve the Naperville Metra Station:

Route No.	Route Name	Service Type
182	North Naperville Evening Service	Commuter Feeder (evening)
183	Southwest Naperville Evening Service	Commuter Feeder (evening)
184	South Naperville Evening Service	Commuter Feeder (evening)
185	Southeast Naperville Evening Service	Commuter Feeder (evening)
530	West Galena (Aurora) - Naperville Metra	All-day (Monday - Saturday)
676	Naperville Metra - Warrenville	Commuter Feeder
677	Naperville Metra - Brighton Ridge	Commuter Feeder
678	Naperville Metra - River Woods	Commuter Feeder
680	Naperville Metra - Brookwood Trace	Commuter Feeder
681	Naperville Metra - Lincoln Park	Commuter Feeder
682	Naperville Metra - Brookdale/St. Thomas Park-n-Ride	Commuter Feeder
683	Naperville Metra - Ashbury	Commuter Feeder
684	Naperville Metra - Winchester Place	Commuter Feeder
685	Naperville Metra - Ivy Ridge	Commuter Feeder
687	Naperville Metra - Maplebrook East	Commuter Feeder
689	Naperville Metra - Century Hill	Commuter Feeder
714	College of DuPage - Naperville - Wheaton Connector	All-day (Monday - Friday)
722	Ogden Avenue	All-day (Monday - Saturday)

Pace Bus Service to the Route 59 Metra Station

Pace Suburban Bus currently operates 4 routes that provide service to the Route 59 Metra Station for the Naperville community: 3 feeder routes that provide direct express service to and from the park-n-rides and 1 all-day service route. The following table summarizes the Pace Suburban Bus routes that serve the Route 59 Metra Station from Naperville:

Route No.	Route Name	Service Type
559	Illinois Route 59	All-day (Monday - Saturday)
672	95th Street Park-n-Ride - Route 59 Metra	Commuter Feeder (Express)
673	Community Christian Park-n-Ride - Route 59 Metra	Commuter Feeder (Express)
675	Wheatland Salem Park-n-Ride - Route 59 Metra	Commuter Feeder (Express)



GUARANTEED RIDE HOME

The City of Naperville Guaranteed Ride Home Program offers alternative transportation during non-peak travel times to commuters who are Naperville residents and use Pace Suburban Bus to access the Naperville or Route 59 Metra Station. The program is intended to promote transit use and offers a reimbursement for travel costs to registered participants who need to return to Naperville unexpectedly when Pace service is not available. All participants must register for the program and are eligible for reimbursement for up to 12 trips per calendar year for a taxi or ride share service ride between one of the Metra stations and their home or designated park-n-ride. Reimbursement rates are established at the start of each calendar year. The reimbursement for eligible trips is the predetermined rate or the actual fare paid, whichever is less.

Automobile Access

The majority of commuters accessing the two stations utilize automobiles. According to Metra's 2016 Origin-Destination Survey, 74% of commuters at the Naperville Metra Station and 85% of commuters at the Route 59 Metra Station arrive and depart via automobile, either by driving alone and parking, carpooling, being dropped-off and picked-up or using a taxi or ride share company.



Drop-Off/Pick-Up, Taxi and Ride Share

Drop-off/pick-up, taxi and ride share activity takes place along the curb closest to the station on both the north and south sides of the Route 59 Metra Station. At the Naperville Metra Station, a taxi stand is available on the north side of the tracks and a drop-off/pick-up area is designated on the south side. Currently there is not a separate designated space for ride share companies. Despite the designated areas, passenger loading and unloading occurs on both sides of the tracks at both stations. This is primarily due to inbound trains using the south platforms and the outbound trains using the north platforms.

Carpooling

A carpool consists of two or more people who travel to the station in a private vehicle that parks in one of the commuter lots. Due to the high demand for parking permits at the commuter lots, the City of Naperville has traditionally encouraged permit holders to offer a carpool to other commuters. To facilitate this, permit holders may currently designate up to two carpools on their account. The license plates of the carpools are recorded so that a carpool commuter can use the permit hang tag on occasion when the permit holder is not parking at the station, either due to vacation or work travel. The carpool program is not intended to be a method of permit transfer.

Motorcycles and Scooters

Designated motorcycle and scooter parking is provided at both stations. Free spaces are available at the Route 59 Station on the east side of the City of Naperville parking lot and at the Naperville Metra Station on the north side of the tracks adjacent to the Burlington Lot. In addition, 40 covered permit spaces are available on the south side of the tracks just west of the station building. The permit cost is \$48 per year.

COMMUTER PARKING

2

Parking Options

- 1. QUARTERLY PERMIT
- 2. DAILY FEE

3,483

Number of spaces the City of Naperville manages at the Naperville and Route 59 Stations

2,601

Number of spaces the City of Aurora offers on the south side of the Route 59 Metra Station

Commuters who choose to drive to the Naperville and Route 59 Metra Stations and park have two options: quarterly permit parking or daily fee parking. The City of Naperville manages a total of 3,483 spaces at the two stations. In addition, the City of Aurora offers 2,601 spaces on the south side of the Route 59 Metra Station. Maps depicting the parking locations at the Naperville Metra Station and the City of Naperville lot at the Route 59 Station are included in the Appendix.

Parking Type	Naperville	Route 59 (Naperville Lot)	Route 59 (Aurora Lot)
Permit	918	966	1,020
Daily Fee	724	809	1,542
ADA	39	27	39
Total	1,681	1,802	2,601



Daily Fee Parking

Daily fee parking spaces are available on a first-come, first-serve basis. The spaces at the Naperville Metra Station experience high utilization. During 2018, the average occupancy rate was 97%. The spaces often reach 100% occupancy before 7 a.m. During 2018, the average occupancy rate of daily fee parking spaces at the Route 59 lot was 86%.

A fee is required to use the spaces Monday through Friday between 6 a.m. and 6 p.m. The fee for all spaces at Route 59 and the majority of spaces at Naperville is \$2 per day. The spaces located at the DuPage Children's Museum and 190 E. 5th Avenue lot (54 and 168 spaces respectively) are \$5 per day. In addition to the standard daily fee spaces, certain permit spaces in the Burlington, Kroehler and Route 59 Lots become available for daily fee parking after 9 a.m. when not occupied by a permit holder. The standard rate of \$2 is required.

The fee is paid at automatic payment machines located at both stations. The City uses a pay-by-space system where commuters enter the space number when making a payment. Commuters do not need to return to their vehicle to display a receipt. The machines accept cash, credit cards and smart cards, which are pre-paid debit cards. The City of Naperville also uses Pay-by-Phone, which allows for payment to be made by phone or mobile app.



Quarterly Permit Parking

Commuter permit parking regulations are established in the Municipal Code. The code provides for the City Manager to enact Rules and Regulations to implement the code provisions and inform commuters of permit parking policies. The current Rules and Regulations are included in the Appendix.

Quarterly permit spaces are reserved for commuters who hold a permit for the specified parking lot. The permit comes in the form of a hang tag that is displayed on the rearview mirror. Permit holders are billed quarterly and receive a dated sticker each quarter to demonstrate that their permit is current.

The City sells more permits for each lot than there are spaces available to promote high utilization. The oversell is intended to account for permit holders who do not commute by Metra every day of the week or those who simply do not commute at all but choose to retain their permit. Despite the aggressive oversell, permit spaces are typically less utilized than daily fee spaces at both stations. City staff conducts monthly mid-week occupancy counts of every commuter space to track utilization. The table below includes the permits issued and oversell rate for each lot as of October 1, 2018.

Location	Spaces	Permits Issued	Oversell	2018 Average Occupancy
Burlington Lot	526	850	62%	89%
Kroehler Lot	282	474	68%	92%
Parkview Lot	110	185	68%	78%
Route 59 Lot	966	1,100	14%	78%

The current quarterly permit rates were established in 2008 following a rate study. The cost varies by location, which is due in part to lease and grant agreements with the BNSF Railway and Metra.

A summary of parking fees and waitlists at other suburban stations along the BNSF Line is included in the Appendix.

Location	Resident Rate	Non-Resident Rate
Burlington Lot	\$120	\$120
Kroehler Lot	\$110	\$135
Parkview Lot	\$120	\$120
Route 59 Lot	\$120	\$145

Waitlist Management and Permit Offers

Waitlist	Total Commuters	Kroehler Permit Holders on Waitlist	Route 59 Permit Holders on Waitlist
Burlington/ Parkview	771	289	22
Kroehler	149	-	11
Both	520	-	24
Total	1,440	289	57

The City maintains quarterly permit waitlists when the demand for quarterly permits exceeds the number of permits available. Depending on their lot of choice, commuters will remain on waitlists for years to obtain a parking permit. Based on permit issuance and utilization of spaces, a waitlist is not currently used for Route 59 and permits are readily available. The City previously managed a waitlist for the Route 59 Lot; however, it was eliminated in 2010.

Demand for quarterly permits at the Naperville Metra Station far exceeds the number of permits available. As a result, waitlists for that station have been in place for decades. The City currently maintains two waitlists for the Naperville Station lots: one for the Kroehler Lot and one combined list for the Burlington and Parkview Lots. As of October 1, 2018, the lists included 1,440 distinct commuters. Commuters may apply to be on one or both waitlists, and many commuters on the Burlington/Parkview list hold a Kroehler permit. The Burlington and Parkview Lots are preferred due to their location; therefore, many commuters will choose to “upgrade” their permit by exchanging their Kroehler permit for one of the other two lots when a permit is offered. The table at the top of this page summarizes the number of commuters on the waitlists, as well as the number who already hold a permit.

Waitlist times are determined based on the application date of the commuter at the top of the waitlist. As such, the wait time is an estimate and varies over time. As of October 1, 2018, the combined Burlington/Parkview waitlist has a 14-year wait and the Kroehler waitlist has a 7-year wait.

New permits for the Naperville Metra Station lots are issued each quarter to commuters on the waitlists. When issuing permits, the goal is to achieve high occupancy rates without creating an overflow condition. Staff considers several factors when determining the amount of permit offers, including recent space utilization rates based on the monthly counts, acceptance rates from previous permit offers and permit cancellations.

Historically, the acceptance rate for the Burlington, Parkview and Kroehler permit offers has varied between 60% and 100%. For offers made during 2016 through 2018, the average acceptance rates were 76% for the Burlington Lot, 80% for the Parkview Lot and 74% for the Kroehler Lot. This means that 20 to 26% of permit offers were rejected by commuters. Offers are rejected for a variety of reasons, such as the commuter has changed jobs and is no longer using Metra or the commuter has moved and is no longer using the Naperville Metra Station. Commuters who are offered a permit are removed from the waitlist whether they accept or reject the permit offer.

Permit cancellations vary each year. The number of cancellations for Naperville Station permits is very low when compared to Route 59 permit cancellations. Because a waitlist does not exist for Route 59 permits, commuters are less likely to retain their Route 59 permits when they are not using them on a regular basis. The table below depicts the number of permits that were cancelled by commuters for each of the parking lots over the past three years:

Year	Burlington	Parkview	Kroehler	Route 59
2018	48	12	20	317
2017	37	8	22	343
2016	51	9	23	248



COST OF COMMUTING

The cost to commute by Metra varies depending on the station a commuter uses and the mode of access for travel to and from the station. The Naperville Metra Station is located in Zone F, which has a monthly Metra fare of \$210.25. The Route 59 Metra Station is located in Zone G, which has a monthly Metra fare of \$224.75. The costs associated with the various modes of accessing the stations were described in the preceding sections. The table below provides a comparison of a Naperville resident's monthly cost to commute to the two stations using different modes of access. For the purposes of the comparison, it is assumed that a regular commuter uses Metra 20 days per month and that Pace riders use the bus in the morning and evening. The monthly permit parking rate for the Naperville Station is based on the Burlington Lot fee.

	Naperville		Route 59	
	Monthly Access Cost	Total Monthly Cost with Metra Fare	Monthly Access Cost	Total Monthly Cost with Metra Fare
Permit Parking	\$40	\$250.25	\$40	\$264.75
Daily Fee Parking (\$2 spaces)	\$40	\$250.25	\$40	\$264.75
Daily Fee Parking (\$5 spaces)	\$100	\$310.25	N/A	N/A
Pace Bus	\$80	\$290.25	\$80	\$304.75

APPENDIX

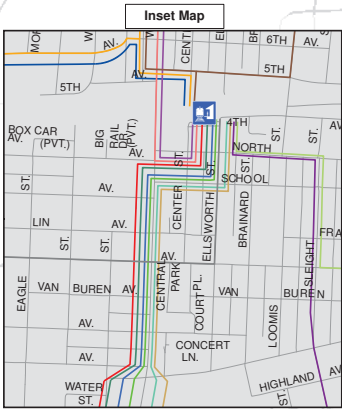
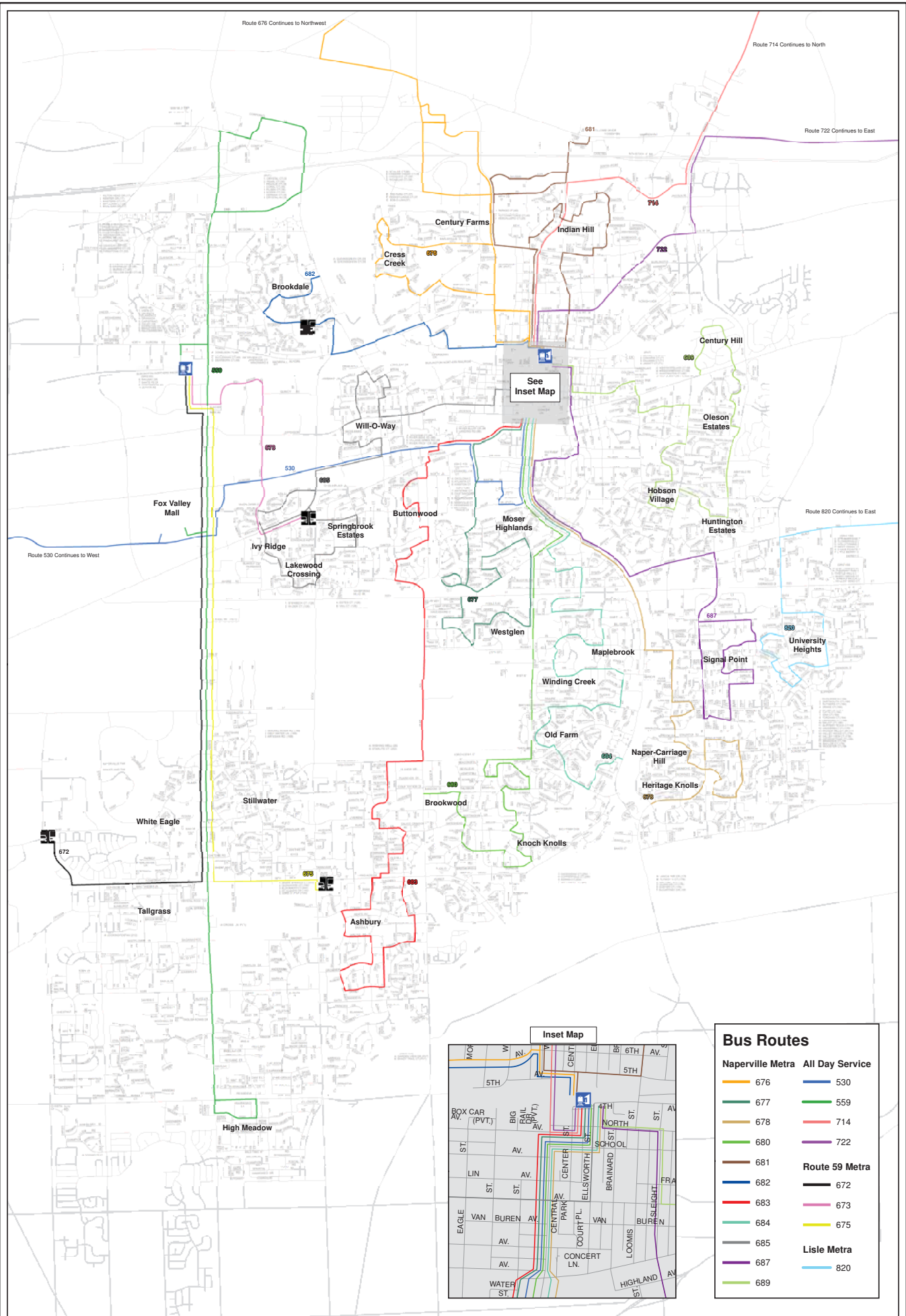
- 1 Metra Ridership Table**
- 2 Pace Suburban Bus Route Map**
- 3 Naperville Station Parking Map**
- 4 Route 59 Station Parking Map**
- 5 Commuter Parking Rules and Regulations (May 1, 2012)**
- 6 BNSF Line Parking Information**



Weekday Station Boardings Over Time

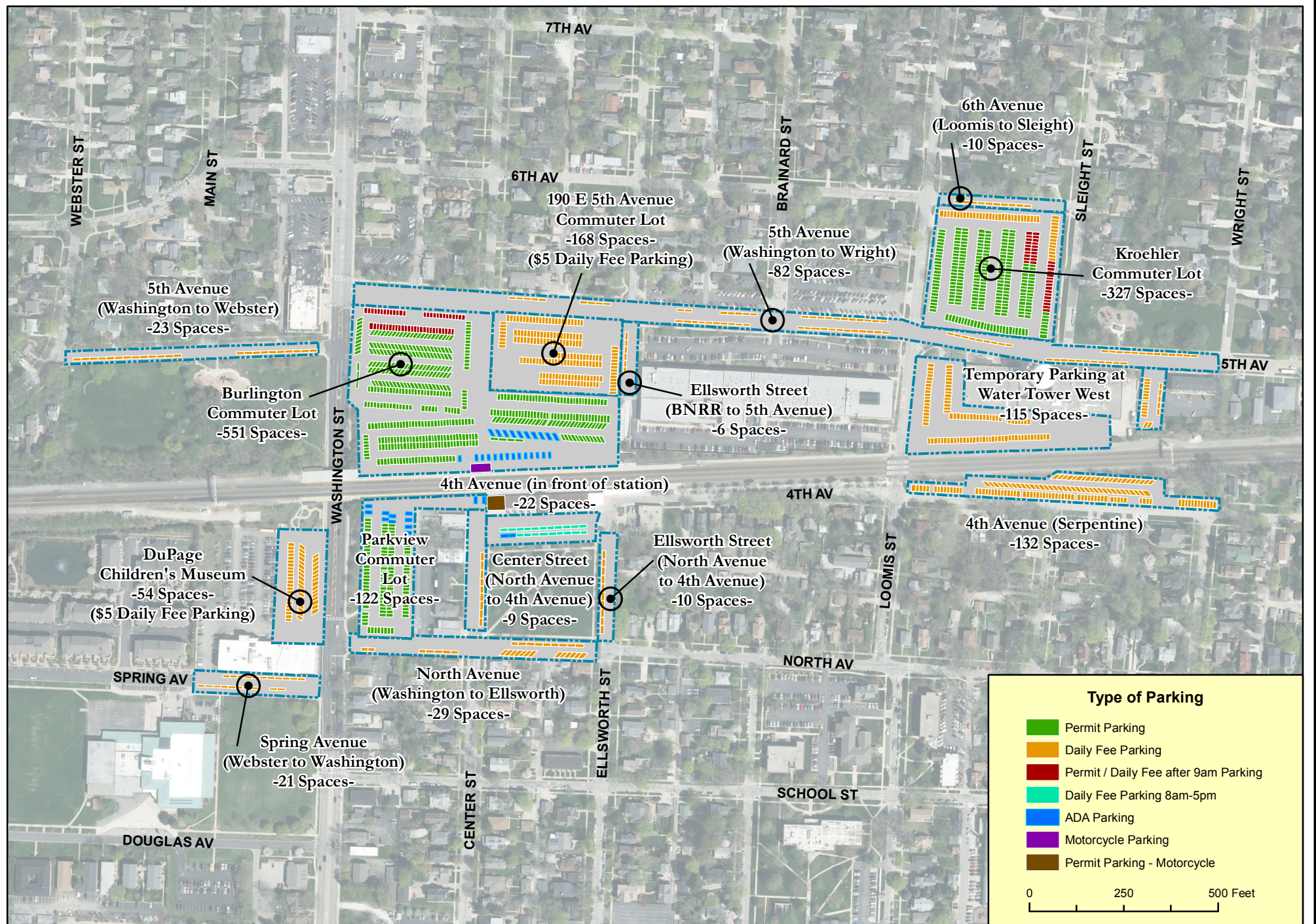
Exhibit III

Line	Station	Mile Post	Spring 1983	Spring 1985	Fall 1987	Fall 1989	Fall 1991	Fall 1993	Fall 1995	Fall 1997	Fall 1999	Fall 2002	Fall 2006	Spring 2014	Fall 2016
Heritage	Joliet	37.2	106	138	149	192	130	100	139	171	253	313	395	244	209
Heritage	Lockport	32.9	55	67	79	100	92	123	128	182	201	303	552	352	412
Heritage	Lockport/5th	32.1	26	14	17	--	--	--	--	--	--	--	--	--	--
Heritage	Lemont	25.3	130	171	239	239	245	216	247	252	341	407	381	456	489
Heritage	Willow Springs	17.5	84	96	136	142	134	115	82	67	82	142	97	95	115
Heritage	Summit	11.9	44	73	107	109	144	123	74	62	66	79	64	86	100
Heritage	Glenn	10.3	51	72	93	80	--	--	--	--	--	--	--	--	--
Heritage	Brighton Park	5.2	3	--	--	--	--	--	--	--	--	--	--	--	--
Heritage	Halsted	2.6	2	--	--	--	--	--	--	--	--	--	--	--	--
Heritage	Union Station	0.0	499	588	827	858	748	678	631	668	905	1,180	1,421	1,188	1,222
Total Heritage			1,000	1,219	1,647	1,720	1,493	1,355	1,301	1,402	1,848	2,424	2,910	2,421	2,547
BNSF	Aurora	37.5	834	905	985	1,056	1,014	1,033	1,184	1,387	1,467	1,646	2,180	2,107	1,936
BNSF	Route 59	31.6	--	--	--	1,112	1,740	2,011	2,556	3,322	4,178	5,001	5,793	5,874	5,781
BNSF	Naperville	28.5	2,571	3,251	3,791	3,510	3,150	3,196	3,271	3,516	4,040	3,734	4,112	4,002	4,107
BNSF	Lisle	24.5	2,330	2,219	2,150	2,222	2,227	2,280	2,390	2,648	2,576	2,204	2,472	1,993	1,789
BNSF	Belmont	22.6	1,204	1,400	1,460	1,511	1,410	1,392	1,418	1,495	1,515	1,450	1,414	1,325	1,472
BNSF	Downers Grove, Main St.	21.2	1,830	2,051	2,090	2,261	2,044	2,021	2,023	2,205	2,277	2,371	2,328	2,473	2,376
BNSF	Fairview Avenue	20.4	598	635	612	562	537	604	553	572	550	445	403	425	458
BNSF	Westmont	19.5	1,305	1,314	1,268	1,273	1,254	1,275	1,290	1,292	1,282	1,243	1,168	1,070	1,058
BNSF	Clarendon Hills	18.3	1,078	1,032	1,117	1,011	986	990	928	902	957	885	799	808	806
BNSF	West Hinsdale	17.8	338	411	468	439	340	367	409	374	378	317	323	351	376
BNSF	Hinsdale	16.9	1,155	1,196	1,194	1,223	1,113	1,163	1,231	1,215	1,156	1,047	1,065	1,168	1,160
BNSF	Highlands	16.4	210	231	256	202	207	223	269	238	228	213	176	167	203
BNSF	Western Springs	15.5	1,022	1,151	1,121	1,118	1,166	1,151	1,138	1,081	1,179	1,065	1,093	1,113	1,133
BNSF	LaGrange, Stone Ave.	14.2	1,017	985	1,089	1,101	1,171	1,078	1,090	1,153	1,123	999	988	1,026	1,046
BNSF	LaGrange Road	13.8	1,496	1,529	1,567	1,548	1,423	1,360	1,388	1,366	1,496	1,353	1,352	1,468	1,340
BNSF	Congress Park	13.1	129	168	149	116	105	107	113	126	86	118	176	250	290
BNSF	Brookfield	12.3	708	691	705	688	618	635	659	633	648	660	604	607	572
BNSF	Hollywood (Zoo Stop)	11.8	152	147	170	160	116	123	174	133	144	129	133	95	120
BNSF	Riverside	11.1	531	570	510	583	468	490	482	492	466	438	416	501	499
BNSF	Harlem Avenue	10.1	680	718	758	859	768	788	738	676	698	532	530	497	421
BNSF	Berwyn	9.6	852	803	882	867	811	869	921	804	860	844	718	732	632
BNSF	LaVergne	9.1	235	267	346	289	254	276	227	221	229	201	159	191	187
BNSF	Clyde	8.5	131	116	129	128	113	110	89	80	64	71	64	--	--
BNSF	Cicero	7.0	276	232	213	245	182	225	249	208	256	281	246	196	185
BNSF	Western Avenue	3.8	116	115	95	109	77	80	92	94	92	77	110	78	69
BNSF	Halsted Street	1.8	36	52	37	30	34	24	22	21	14	41	70	92	120
BNSF	Union Station	0.0	18,545	20,005	21,361	22,620	21,980	21,995	22,546	24,200	25,355	25,114	26,547	26,077	26,615
Total BNSF			39,379	42,194	44,523	46,843	45,308	45,866	47,450	50,454	53,314	52,479	55,439	54,686	54,751



Bus Routes	
Naperville Metra	All Day Service
676	530
677	559
678	714
680	722
681	
682	Route 59 Metra
683	672
684	673
685	675
687	
689	
	Lisle Metra
	820



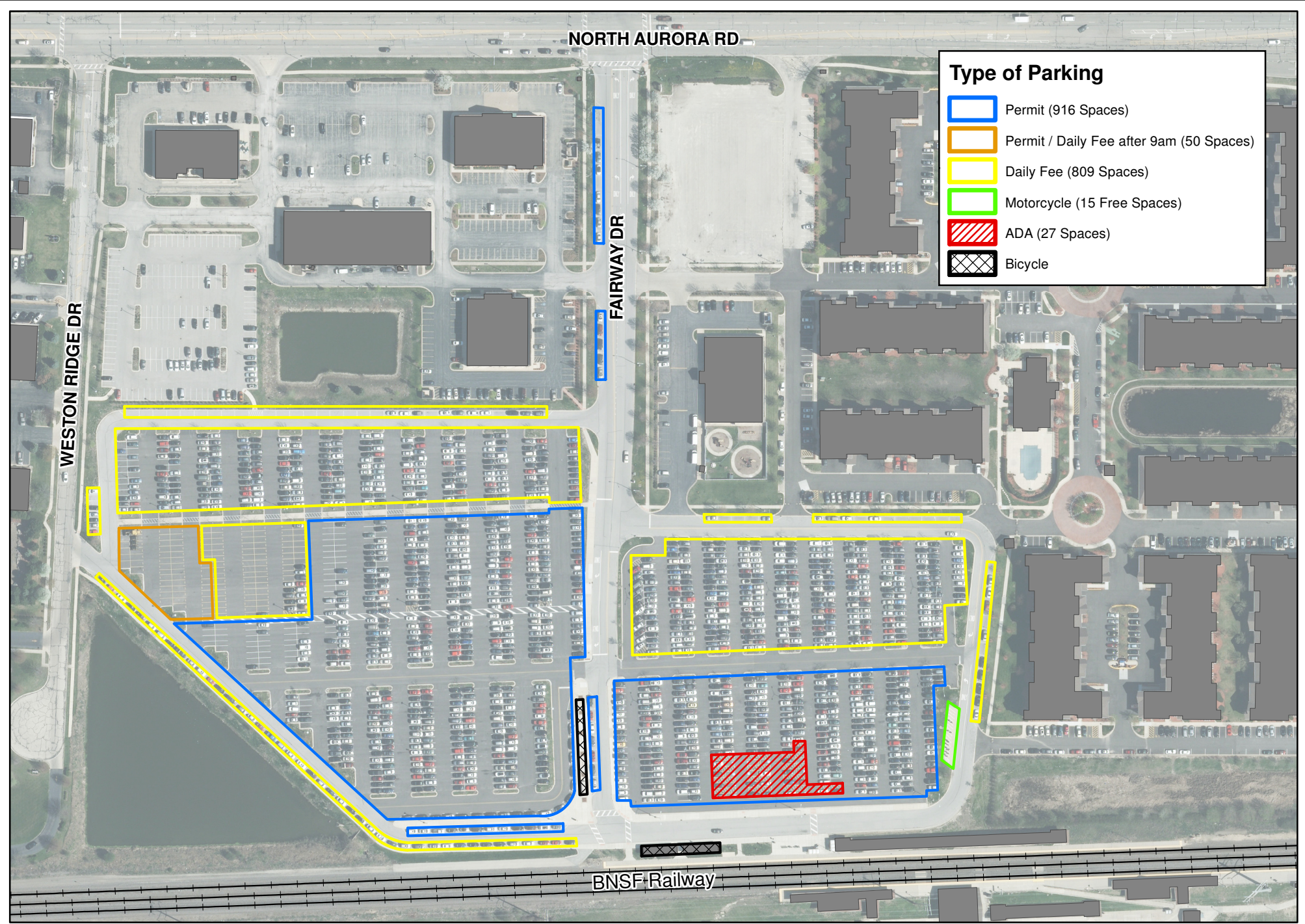


Transportation, Engineering and
Development Business Group
Questions Contact (630) 420-6100
www.naperville.il.us
May 2017

City of Naperville Naperville Metra Station Parking Locations

This map should be used for reference only.
The data are subject to change without notice.
City of Naperville assumes no liability in the use
or application of the data. Reproduction or
redistribution is forbidden without expressed
written consent from the City of Naperville.





Transportation, Engineering and
Development Business Group
Questions Contact (630) 420-6100
www.naperville.il.us
August 2017

City of Naperville

Route 59 Metra Station Parking Locations

This map should be used for reference only.
The data are subject to change without notice.
City of Naperville assumes no liability in the use
or application of the data. Reproduction or
redistribution is forbidden without expressed
written consent from the City of Naperville.



CITY OF NAPERVILLE

COMMUTER PARKING RULES AND REGULATIONS

last updated May 1, 2012

INTRODUCTION

The City of Naperville Commuter Parking Rules and Regulations outline the City's parking policies for the Naperville and Route 59 Metra Stations. The Rules and Regulations pertain to all commuter parking spaces, including permit parking spaces, daily fee parking spaces, motorcycle/scooter, and bicycle parking. The City of Naperville provides commuter parking on-street and in off-street parking lots in the vicinity of the Naperville and Route 59 Metra Stations. Maps of the commuter parking facilities are available on the City's website.

The commuter lots may be used without a permit from 6:00 p.m. until 6:00 a.m. Monday through Friday, and all day Saturday, Sunday or City-designated holidays. City-designated holidays are:

- New Year's Day
- Memorial Day
- July 4th
- Labor Day
- Thanksgiving
- Day after Thanksgiving
- Christmas Day

Designated daily fee spaces are available for use by commuters without a valid permit at both train stations at the rate posted on the pay machines.

The City Manager is authorized to review and revise the Rules and Regulations as necessary to carry out the City's policies. Permit holders shall agree to the Rules and Regulations at the time of permit issuance, and shall be subject to all updates. The Rules and Regulations shall be made available on the City of Naperville website. Copies of the rules shall be provided to permit holders upon request. The City reserves the right to amend these regulations without notice.

Questions regarding these Rules and Regulations may be directed to the City of Naperville Commuter Call Center at (630) 305-5330. Commuter services are also available through the City of Naperville Transportation, Engineering, and Development Business Group, located on the 2nd floor of the Naperville Municipal Center (400 S. Eagle Street.)

TABLE OF CONTENTS

PERMIT PARKING RULES AND REGULATIONS	3
I. Issuance of Permit	3
A. Billing Schedule	4
B. Payment Options	4
C. Payment Due Date	4
D. Permit Audit	5
E. Change of Information	6
F. Replacement of Permit Hangtag	6
G. Replacement of Renewal Sticker	6
H. Reverse Commuter Parking Permit	7
I. Cancelling a Permit	7
J. Permit Termination	7
II. Parking Permit Waitlist	8
A. Application and Non-Refundable Administrative Fee	8
III. Carpool	9
IV. Vanpool	9
DAILY FEE PARKING RULES AND REGULATIONS	10
I. Daily Fee Payments	10
A. Payment Options	10
MOTORCYCLE, SCOOTER AND BICYCLE PARKING	12
I. Motorcycle Parking	12
A. Free Motorcycle Parking	12
B. Motorcycle Permit Parking	12
C. Motorcycle with a Valid Commuter Parking Permit	12
II. Scooter Parking	13
III. Bicycle Parking	13
A. Bicycle Lockers	13
ACCESSIBLE PARKING	15
TOW-AWAY ZONE AND PARKING CITATIONS	16
I. Tow-Away Zone	16
II. Parking Citations	16

Exhibit A – Commuter Permit Quarterly Fees

Exhibit B – Reverse Commuter Permit Quarterly Fees

PERMIT PARKING RULES AND REGULATIONS

The City of Naperville issues parking permits and maintains waitlist(s) for a parking permit with the intent to provide access to City-owned parking facilities for individuals who use the Metra/Burlington Northern Santa Fe railway service to regularly commute to work, school or for some other established purpose.

The City of Naperville issues commuter parking permits for the following parking facilities:

- Burlington Lot (5th Avenue & Center Street)
- Parkview Lot (North Avenue & Washington Street)
- Kroehler Lot (5th Avenue & Loomis Street)
- Route 59 Lot (North Aurora Road & Fairway Drive)

As needed, the City maintains three (3) waitlists for commuter parking permits. Permits are issued based on seniority.

- Burlington Lot/Parkview Lot (combined waitlist)
- Kroehler Lot
- Route 59 Lot

I. Issuance of Permit

To obtain a commuter parking permit, interested parties must complete a commuter parking application and pay the appropriate non-refundable administrative fee(s). If space is available at the time of application, a commuter parking permit will be issued. If there is not space available, the applicant will be placed on the commuter parking waitlist(s). Refer to Section II (page 8) for information about the permit application and waitlist.

The City may request the following documentation for issuance of a permit or to audit a parking account at any time.

- Valid State issued photo identification (e.g., driver's license, identification card)
- Proof of current address (e.g., valid driver's license, utility bill, etc.)
- Offer Letter from the City of Naperville
- Payment of the non-refundable administrative fee
- Payment of the quarterly fee

Commuters may only maintain one parking permit at a time. If a commuter is offered a permit for another lot, the commuter must surrender their current permit before the new permit is issued.

The valid and current parking permit for commuter facilities must be displayed in the front window of the vehicle, placed over the rear view mirror with the permit information

and quarterly fee sticker facing the front windshield. Failure to do so may result in ticketing and/or towing.

Parking permits and/or renewal stickers do not guarantee a parking space, and shall not constitute any property rights to permit-holders nor are these regulations intended to create any contractual rights. **A permit-holder parked in the designated daily fee spaces will be expected to pay the appropriate daily fee in the pay machines.**

A. Billing Schedule

Commuter parking fees are billed on a quarterly basis according to the following billing schedule.

Quarter	Invoice Date	Due Date
February 1 – April 30	December 15	January 10
May 1 – July 31	March 15	April 10
August 1 – October 31	June 15	July 10
November 1 – January 31	September 15	October 10

B. Payment Options

The City accepts the following forms of payment for commuter parking fees: cash, personal check, money orders, and City-accepted credit cards.

Fees paid by cash or money order, must be made in person at the Naperville Municipal Center (400 S. Eagle Street).

Fees paid through the City's bank draft program require the permit-holder's bank information. This information must correspond to the permit-holder information on file with the City in terms of account name, property address, and telephone number, if applicable. If using the bank draft program the permit-holder is responsible for providing to the City current information at the time of any change in bank or bank account information.

Fees paid over the telephone with a credit card will only be accepted from the permit-holder, or spouse, using his or her own personal credit card.

C. Payment Due Date

Commuter parking payments are due twenty-five (25) days after the billing date or invoice date. If the due date falls on a weekend or City-designated holiday, the payment is due the next business day. Payments received after the due date will be considered late and will be assessed a \$20.00 penalty fee. The permit-holder or waitlist applicant is solely responsible for the City's receipt of payment.

While every attempt will be made to properly bill individual permit-holders, the permit-holders are ultimately responsible for timely payment. Non-receipt of a bill does not exempt an individual from these provisions.

If the City has not received a permit-holder's payment in full by ten (10) calendar days after the due date, that permit may be cancelled and shall be forfeited to the City of Naperville.

The City allows a one-time permit reactivation exception for permit holders whose permit has been cancelled due to an unpaid quarterly fee. The permit holders must:

- Pay all delinquent fees and charges
- Sign the City's Affidavit for Reinstatement of Parking Permit
- The City reserves the right to require the permit holder establish ongoing quarterly permit fee payment through the City's bank draft program within thirty (30) calendar days of the cancellation of the permit by the City

Upon completion of these requirements, the City will reinstate the permit holder's cancelled commuter parking permit.

If more than one payment is missed, the permit will be canceled. A commuter whose permit is canceled due to non-payment for any reason may apply for a spot on the waitlist(s) by submitting the proper application and respective non-refundable administrative fee(s).

D. Permit Audit

The City will periodically perform external audits at the commuter parking lots and internal audits of permit-holder information. The City reserves the right to verify any permit-holder information.

Upon audit permit holders may be required to provide any of the following:

- Valid State issued photo identification (e.g., driver's license, identification card)
- Proof of current address (e.g., valid driver's license, utility bill, etc.)
- License plate number

This verification information may be required prior to issuance or renewal of a permit.

The City reserves the right to request the permit-holder submit the aforementioned information in person. Any failure to provide or verify requested information may result in the loss of permit. Loss of permit may also occur if the City identifies any instance of misuse of a permit. This includes but is not limited to a permit being used by an individual other than the City accepted permit-holder, carpool, or other City accepted commuter for that permit. The City is not required to provide the permit-holder notice for failures.

E. Change of Information

Any time contact information is changed by a permit-holder or waitlist applicant, it is the permit holder or waitlist applicant's responsibility to update their account information. A signed Commuter Parking Account Update form, available on the City's website, is required for changes to:

- Name, Address, Phone Number, Email Address
- License plate number
- Carpool information

The City of Naperville may request proof of the change of information at any time.

Failure to provide notification of a change in information to the City of Naperville may result in the loss of commuter parking permit, or removal from the commuter parking waitlist(s). Once a commuter parking permit is forfeited, or name is removed from the waitlist(s), the commuter may re-apply and pay the appropriate non-refundable administrative fee(s) to be placed on the waitlist(s). With a new application for the waitlist(s), the commuter's name will be placed at the end of the waitlist(s).

F. Replacement of Permit Hangtag

Replacement of permit hangtag due to loss or damage must be made by the permit-holder or spouse (providing the proper identification), in person at the Naperville Municipal Center (400 S. Eagle Street). Commuters shall be required to pay one-half of the appropriate quarterly fees for the respective commuter lot to replace a lost or stolen permit hangtag. A damaged hangtag will be replaced at no charge.

To replace a lost, stolen or damaged hangtag, an affidavit must be completed. The replacement permit hangtag must be picked up in person at the Naperville Municipal Center (400 S. Eagle St.).

G. Replacement of Renewal Sticker

A permit-holder whose renewal sticker is lost, stolen or not received, will complete an affidavit for a replacement sticker for the same quarterly period. No permit-holder will be issued more than one (1) replacement sticker in a 12-month period. All permit-holders are subject to a permit audit. The City reserves the right to require any permit-holder to provide the proper information in person at the Naperville Municipal Center in order for the permit-holder to receive a renewal sticker.

H. Reverse Commuter Parking Permit

A reverse commuter parking permit will be available to persons who use the Metra train to commute to the Naperville area. The reverse commuter permit will be valid in the regular permit parking areas of the Burlington Lot at the Naperville Station and the Naperville Route 59 Lot between the weekday hours of 3:00 p.m. and 8:00 a.m. Vehicles not removed by 8:00 a.m. on a weekday will be ticketed. With the exception of the time restrictions, all other parking rules and regulations applied to regular permit holders also apply to reverse commuter permit holders.

The quarterly rate schedule found in Exhibit B will be applied to reverse commuter permits. The quarterly rate may be waived if the reverse commuter parking permit is being issued for use as a part of the Pace Metra Feeder Vanpool program. Refer to Section IV (page 9) for information about the vanpool program. The City reserves the right to maintain a waitlist(s) and control the number of reverse commuter permits issued.

I. Cancelling a Permit

If a permit holder is no longer in need of a commuter parking permit, the permit holder should submit a signed Commuter Parking Account Update form (available on the City's website), or City accepted letter to the City of Naperville requesting cancellation of their permit. The permit holder must surrender the permit with the current permit sticker to the Transportation, Engineering, and Development Business Group. The permit must be surrendered prior to the start of the new quarter to ensure a full refund.

If the permit is not surrendered prior to the start of the new quarter, refunds will be prorated in whole dollars for the value of the unused whole months remaining upon surrender of a permit by the registered permit-holder.

J. Permit Termination

The City reserves the right to terminate any commuter parking permit for reason including but not limited to the following:

- Failure to provide notification of a change in information (e.g., name, address, phone number, email address, license plate number) to the City of Naperville.
- Failure to provide documentation of account information (e.g., valid State issued photo identification, proof of current address) in person upon the City's request.
- Misuse of the permit, including but not limited to the permit being used by an individual other than the City accepted permit-holder, carpool or other City accepted commuter.
- Failure to make payment per the Rules and Regulations outlined herein.
- Any indication of lubricants or fuel leaking or being spilled onto the parking lot surface may be cause for revocation of the parking permit.

- The City reserves the right to request the permit-holder submit the aforementioned information in person. Any failure to provide or verify requested information may result in the loss of permit.

II. Parking Permit Waitlist

When the demand is greater than the number of permit spaces available, waitlist(s) are required and shall be maintained by the City of Naperville. The three (3) waitlists identified below are maintained for the four (4) commuter parking lots:

- Burlington/Parkview Lots (a combined waitlist)
- Kroehler Lot
- Route 59 Lot

Commuters may place their name on one or all of the waitlists. Commuters will be issued one permit for the first available lot, without preference. To be placed on a waitlist(s), the applicant must complete and sign the Commuter Parking Permit Application and pay the respective non-refundable administrative fee(s).

An offer letter from the City will be mailed to the commuter at the top of the waitlist when a permit becomes available. At that time the applicant must appear in person, with proper identification, and all required information to obtain a commuter parking permit. Failure to appear in person within the required timeframe will forfeit the opportunity to receive a commuter parking permit. Applicants can re-apply, with completion of a Parking Permit Application and payment of the \$25 non-refundable administrative fee (per waitlist), and have their name placed at the end of the waitlist(s).

A. Application and Non-Refundable Administrative Fee

Commuter Parking Permit Applications can be obtained from the following locations:

- City of Naperville website
- Naperville Municipal Center, 400 S. Eagle Street

The applicant name and contact information identified on the Commuter Parking Permit Application shall be the permit-holder and only individual permitted to use the parking permit, excluding carpools as defined by Section III (page 9).

Parking permits are non-transferable; any commuter transferring the use of their commuter parking permit will have their permit terminated. If terminated, the permit holder can re-apply, pay all applicable fees and have their name placed at the end of the waitlist(s).

At the time the application is completed, a \$25.00 non-refundable administrative fee(s) must be paid per waitlist (i.e., Route 59, Kroehler, and Burlington/Parkview). Payment may be made by check, cash, or City accepted credit card.

Permit rates for each lot are approved by the City Council and are shown on the attached Exhibits A and B. The attached rate schedule may be amended by the City Council from time-to-time and the latest adopted fee schedule shall apply to this section whenever enacted.

The application and permit offer letter includes a waiver and release of any and all claims, known or unknown, against the City for any injuries, property damages or other losses that may, directly or indirectly, result from the use or operation of the commuter facilities.

III. Carpool

A carpool consists of two or more people who travel together in a vehicle that parks in the City's lot and take the train for the purposes of commuting. A permit shall be issued to one person (primary permit-holder) who has the right to bring others to the train with him or her for commuting. The City requires that the permit holder provide the vehicle owner's name, address, phone number, and license plate number for each vehicle used by the carpool.

For approval prior to use, the permit-holder is responsible for providing the City of Naperville all required information about the commuters and vehicles that may be used for carpooling. Each primary permit-holder may only have two registered carpools. Only the primary permit-holder may make changes and update the carpool account information.

The permit is not transferable; any commuter transferring the use of their commuter parking permit will have their permit terminated. If terminated, the permit holder can re-apply, pay all applicable fees and have their name placed at the end of the waitlist(s).

IV. Vanpool

A program to waive commuter parking permit fees has been established for commuters using the Pace Metra Feeder Vanpool Program. The Vanpool program allows for Pace vans to be parked at the Metra Station overnight at no charge. Participants commute to Naperville by Metra train service and then use the Pace van to commute from the station. More information about joining the Pace Metra Feeder Vanpool Program is available at www.pacebus.com.

DAILY FEE PARKING RULES AND REGULATIONS

Designated daily fee parking spaces are available at the Naperville and Route 59 Metra Stations for use by commuters on a first come, first serve basis. Daily fee parking spaces are designated with a white number on colored signs (i.e., blue or purple), at each train station. A map of the daily fee parking spaces is available on the City of Naperville website.

There are a select number of permit spaces that become daily fee after 9:00 a.m. if unused by permit holders for the Route 59, Burlington, and Kroehler parking lots. The after 9:00 a.m. daily fee spaces are designated with yellow stripes and numbers on the pavement. Please note that permit holders have priority use of these spaces until 9:00 a.m.; vehicles parked in these spaces before 9:00 a.m. without a valid permit are subject to ticketing.

I. Daily Fee Payments

Once parked in a daily fee space, commuters pay the daily fee by entering the space number and inserting the appropriate daily fee amount in the pay machines located near the station platforms. It is the commuter's responsibility to enter the **correct** parking space number into the pay machines. Payment must be made at the time the vehicle is parked. **Failure to enter the correct space number or pay immediately can result in a parking citation being issued.** The pay machines are located as follows:

- Naperville Metra Station – East and West sides of the train station building.
- Route 59 Metra Station* – North side of the train tracks, adjacent to the north platform.

*Please note that the Route 59 Station is a shared station with the City of Aurora managing the parking facilities on the south side of the tracks. Commuters parking on the south side of the tracks must use the pay machines on the south platform, and commuters parking on the north side of the tracks must use the pay machines on the north platform.

A. Payment Options

The daily fee parking machines accept cash, City accepted credit card, Smart Cards, and payment by phone as detailed below. **Payment is due at the time the vehicle is parked; violators are subject to ticketing.**

- **Cash** – The daily fee machines accept coins and \$1, \$5, \$10 and \$20 cash. Change is dispensed in \$1 coins only.
- **Smart Card** – Smart Cards are reusable and may be pre-loaded with up to \$100 for payment of daily fee parking. Funds may be added to the Smart Cards at any of the City's daily fee payment machines or at the Naperville Municipal Center. New Smart Cards may be obtained at the Naperville Municipal Center. The City will also mail Smart Cards upon request.

- **Credit Card** – City accepted credit cards may be used for daily fee payment. Credit card payments shall be subject to a service fee for each transaction; the City of Naperville reserves the right to modify the service fee without advanced notice to commuters.
- **Pay-by-Phone** – The City of Naperville contracts with a vendor to provide a pay-by-phone option. Commuters must register with the vendor to use this payment option. A service fee shall apply to each phone transaction; the City of Naperville reserves the right to modify the service fee without advanced notice to commuters. **Pay-by-phone payment is due at the time the vehicle is parked; violators are subject to ticketing.**

MOTORCYCLE, SCOOTER AND BICYCLE PARKING

Motorcycle, scooter and bicycle parking is provided at the Naperville and Route 59 Metra Stations. A map of the parking locations is available on the City's website and additional information is provided on the pages that follow.

I. Motorcycle Parking

The City of Naperville provides motorcycle parking at the Naperville and Route 59 Metra Stations. Motorcycles are not allowed to park in automobile spaces unless authorized by the City of Naperville.

A. Free Motorcycle Parking

Free motorcycle parking is provided in the following locations; a map of the motorcycle parking areas is available on the City's website. The free motorcycle parking spaces are uncovered and available on a first come, first serve basis.

- Naperville Metra Station – North side of the train tracks and a designated area in the Water Tower West Lot, located at the southeast corner of 5th Avenue and Loomis Street.
- Route 59 Metra Station – North side of the train tracks on the east perimeter of the commuter parking lot.

B. Motorcycle Permit Parking

Motorcycle permit parking is located at the Naperville Metra Station, on the south side of the train tracks, under the canopy west of the train station building. Motorcycle permits shall be issued for the twelve (12) month period effective March 1 – February 28 of each year. The annual fee for the permit is \$48.00. The fee shall not be prorated nor will any refund be made for unused portions of the year. Permits for the assigned space must be displayed at all times while the vehicle is parked. The permit shall be attached to the vehicle's rear license plate. Failure to display the proper permit will constitute a violation. Motorcycles may be ticketed and/or towed for failure to display a parking permit.

Unauthorized motorcycles parked in automobile spaces may be ticketed and/or towed at the owner's expense. All other rules previously outlined for purchase and use of automobile permits also apply to the purchase and use of motorcycle permits.

C. Motorcycle Parking with a Valid Commuter Parking Permit

The City offers commuters with a valid commuter parking permit for the Burlington, Parkview, Kroehler, or Route 59 parking lots the opportunity to register their motorcycle with the City and then park the registered motorcycle in the commuter parking lot as designated on their commuter parking permit.

To be eligible to park a motorcycle in the commuter parking lots, permit holders must register their motorcycles with the City of Naperville prior to parking in the commuter lots. The Motorcycle Parking Registration Form is available on the City's website and requires that commuters provide:

- Valid commuter parking permit number
- Motorcycle license plate number
- Email address
- Phone number

Once a registration form has been submitted, commuters will be notified by the City that their registration has been accepted. Please be aware of the following regulations related to the program:

- Only one motorcycle may be registered for each permit.
- Motorcycles must be parked in the same lot as designated on the commuter parking permit (e.g., commuters with a Burlington permit must park their motorcycle in the Burlington Lot).
- Commuters may not use their permits to park both a vehicle and a motorcycle in the lot at the same time.

Modifications may be made to the program at any time.

II. Scooter Parking

Scooters or mopeds are required to park in designated motorcycle areas. Violators shall be subject to ticketing. Scooters are not permitted to park in bicycle parking areas. Scooters parked in designated bicycle parking areas may be ticketed.

III. Bicycle Parking

Free bicycle parking is available at the Naperville and Route 59 Metra Stations. A map of the bicycle parking locations is available on the City's website.

Commuters are responsible for securely locking all bicycles; the City assumes no responsibility for lost or stolen bicycles.

The City reserves the right to remove bicycles from the train station area that are deemed to be abandoned or parked in an unpermitted location. Advanced notice of the intent to remove a bicycle shall not be required.

A. Bicycle Locker

The City has bicycle lockers for rent at the Route 59 commuter lot.

Bicycle lockers shall be issued for the twelve (12) month period effective March 1 – February 28 of each year. To rent a bicycle locker; the applicant must:

- Complete an application
- Pay a \$50.00 non-interest bearing deposit
- Pay a \$24.00 annual fee

The deposit is refundable upon return of the locker key to the City of Naperville. The deposit will be forfeited if the lock or locker is damaged, or if the key is lost. The annual fee shall not be prorated nor will a refund of the annual fee be issued. Any malfunction of the lock should be immediately reported to the City for repair.

The City maintains the right to have access to each bicycle locker.

ACCESSIBLE PARKING

Accessible parking spaces are available in the Burlington, Parkview, and Route 59 commuter parking lots.

Vehicles displaying a registration plate, parking decal or device designating the vehicle as operated by or for a person with disabilities (pursuant to the Illinois Vehicle Code) shall be exempt from commuter permit requirements when parking in commuter parking lot spaces reserved for persons with disabilities.

This parking privilege is strictly limited to the person to whom the special registration plates, special decal or device was issued and to qualified operators acting under their express direction while the person with disabilities is present.

TOW-AWAY ZONE AND PARKING CITATIONS

Vehicles parked in any commuter parking facility, including on-street commuter parking spaces, shall be subject to the applicable Parking Rules as defined by City ordinances.

I. Tow-Away Zone

The parking lots serving as commuter facilities have been designated by City ordinance as tow-away zones, and will be appropriately posted as such. Violations may result in the towing of vehicles at the expense of the owner.

Violations resulting in parking penalties and/or towing of vehicles include the following:

- Parking in a commuter facility without a properly displayed and valid permit for the facility
- Parking in areas reserved for buses or kiss-and-ride
- Violating time restrictions posted for the designated lot
- Having an unpaid City parking ticket

The City reserves the right to ticket and/or tow, suspend and/or revoke a commuter parking permit for any or all of the above rules. The City reserves the right to remove your name from the waitlist.

II. Parking Citations

Commuters are responsible for paying all parking violations issued by the City of Naperville. The City reserves the right to suspend and/or revoke a commuter parking permit for an unpaid City parking ticket. The City reserves the right to remove your name from the waitlist(s).

EXHIBIT A

The commuter parking rates were approved by Naperville City Council on May 6, 2008. The rate schedule may be amended by the City Council from time-to-time and the latest adopted fee schedule shall apply to permit holders whenever enacted.

The current approved rates for the commuter parking lots are listed below.

Commuter Parking Permit Quarterly Fees

Commuter Lot	Resident	Non-Resident
Parkview / Burlington	\$120.00	\$120.00
Kroehler	\$110.00	\$135.00
Route 59	\$120.00	\$145.00

For the purpose of defining residency, residents are considered those who live within the corporate city limits, meaning your current home address is located within the City limits. To verify residency status, visit the City's Your Place website at <http://gis.naperville.il.us/YourPlace/> to determine if your current home address is located in incorporated or unincorporated Naperville.

For non-permit holders, or if the permit spaces are full, daily fee parking is also available at the rate posted on the pay machines.

EXHIBIT B

For individuals using Metra services to commute to Naperville, reverse commuter permits are available. The associated fees are listed below.

Reverse Commuter Parking Permit Quarterly Fees

Commuter Lot	Resident	Non-Resident
Burlington	\$60.00	\$60.00
Route 59	\$60.00	\$65.00

BNSF Line Parking Information

Station	Parking Permit Fee (Quarterly)	Year Adopted	Wait List	Daily Fee	Year Adopted	Metra Zone	Metra Fare (Monthly)
Aurora Route 25	\$120	2015	2 years	\$2.00	2015	H	\$239.25
Route 59 (Aurora)	\$120	2007	0-6 months	\$2.00	2015	G	\$224.75
Route 59 (Naperville)	\$120 Resident	2008	No Wait	\$2.00	2004	G	\$224.75
	\$145 Non-resident						
Naperville (Burlington/Parkview)	\$120	2008	14 years	\$2.00	2004	F	\$210.25
Naperville (Kroehler)	\$110 Resident	2008	6-7 years	\$2.00	2004	F	\$210.25
	\$135 Non-resident						
Lisle	\$138.00	2019	2 years (Resident) 4 years (Non-resident)	\$3.00	2010	E	\$195.75
Belmont	\$93 Resident	2016	5 years	\$3.00	2013	E	\$195.75
	\$134 Non-resident						
Main Street Downers Grove	\$93 Resident only	2016	7 years	\$3.00	2013	E	\$195.75
Fairview Avenue Downers Grove	\$93 Resident	2016	3 years	\$3.00	2013	E	\$195.75
	\$134 Non-resident						
Westmont	\$100	2012	2 years	\$2.00	2012	D	\$181.25
Clarendon Hills North Lot	\$90 Resident	2013	No Wait	\$3.00	2013	D	\$181.25
	\$130 Non-resident						
Clarendon Hills South Lot	\$130	2013	7-8 years	\$3.00	2013	D	\$181.25
West Hinsdale	\$140 Resident only	2008	No Wait	\$3.00	Unknown	D	\$181.25
Hinsdale	\$155 Resident only	2007	2+ years	\$3.00	Unknown	D	\$181.25
Highlands	\$140 Resident only	2008	No Wait	\$3.00	2008	D	\$181.25
Western Springs	\$75 Resident	Unknown	1.5-2 years	\$3.00	2014	D	\$181.25
	\$90 Non-resident						
Stone Avenue, La Grange	\$90-\$150	2013	6 months-2 years	\$3.00	2013	C	\$159.50
LaGrange Road	\$90-\$150	2013	1.5 years	\$3.00	2013	C	\$159.50
Congress Park	N/A	N/A	N/A	\$2.50	2013	C	\$159.50
Brookfield	\$90	2006	No Wait	\$1.50	Unknown	C	\$159.50
Hollywood/On-street Only	\$90	2006	No Wait	N/A	N/A	C	\$159.50
Riverside	\$130-\$150	2016	9 months-4 years	\$3.00	2016	C	\$159.50



Naperville

