

Submittal	Date
Design Review	6-25-2018
Des. Revision	7-24-2018



CAST STONE VENEER

ALUMINUM HANDRAILS

Main Building (fronting Aurora Avenue)  
North Elevation

Material Ratio:  
 Masonry: 2847.8 sf (58.3%)  
 Stucco: 1863.2 sf (41.7%)





ALUMINUM GUARDRAIL

STUCCO

ALUMINUM  
GUTTERS AND  
DOWNSPOUTS

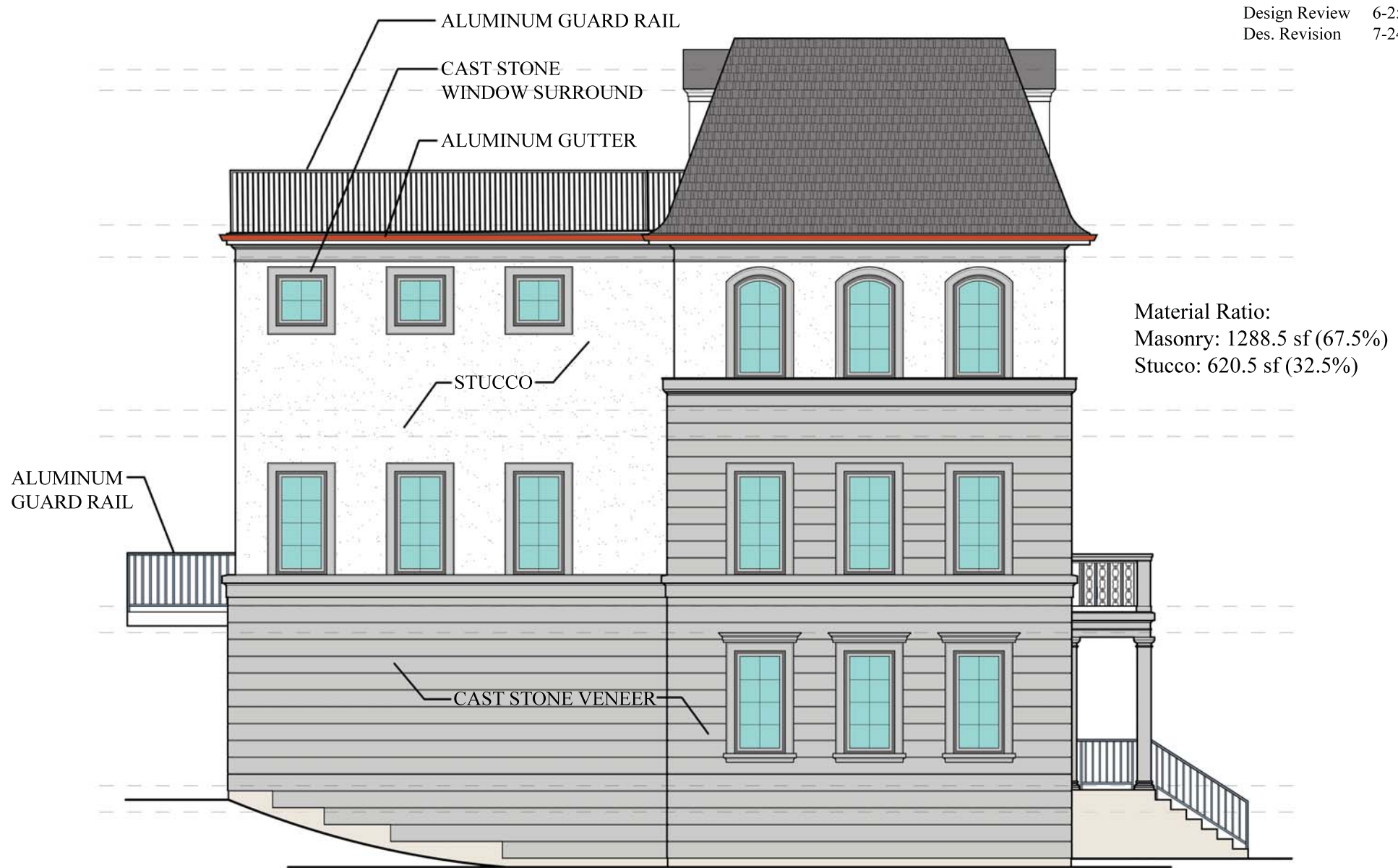
CAST STONE WINDOW  
AND DOOR SURROUND

CAST STONE VENEER

**Main Building - South Elevation**  
**Rear**

Material Ratio:  
Masonry: 2106.4 sf (47.4%)  
Stucco: 2333.6 sf (52.6%)

Submittal      Date  
Design Review      6-25-2018  
Des. Revision      7-24-2018



Material Ratio:  
Masonry: 1288.5 sf (67.5%)  
Stucco: 620.5 sf (32.5%)

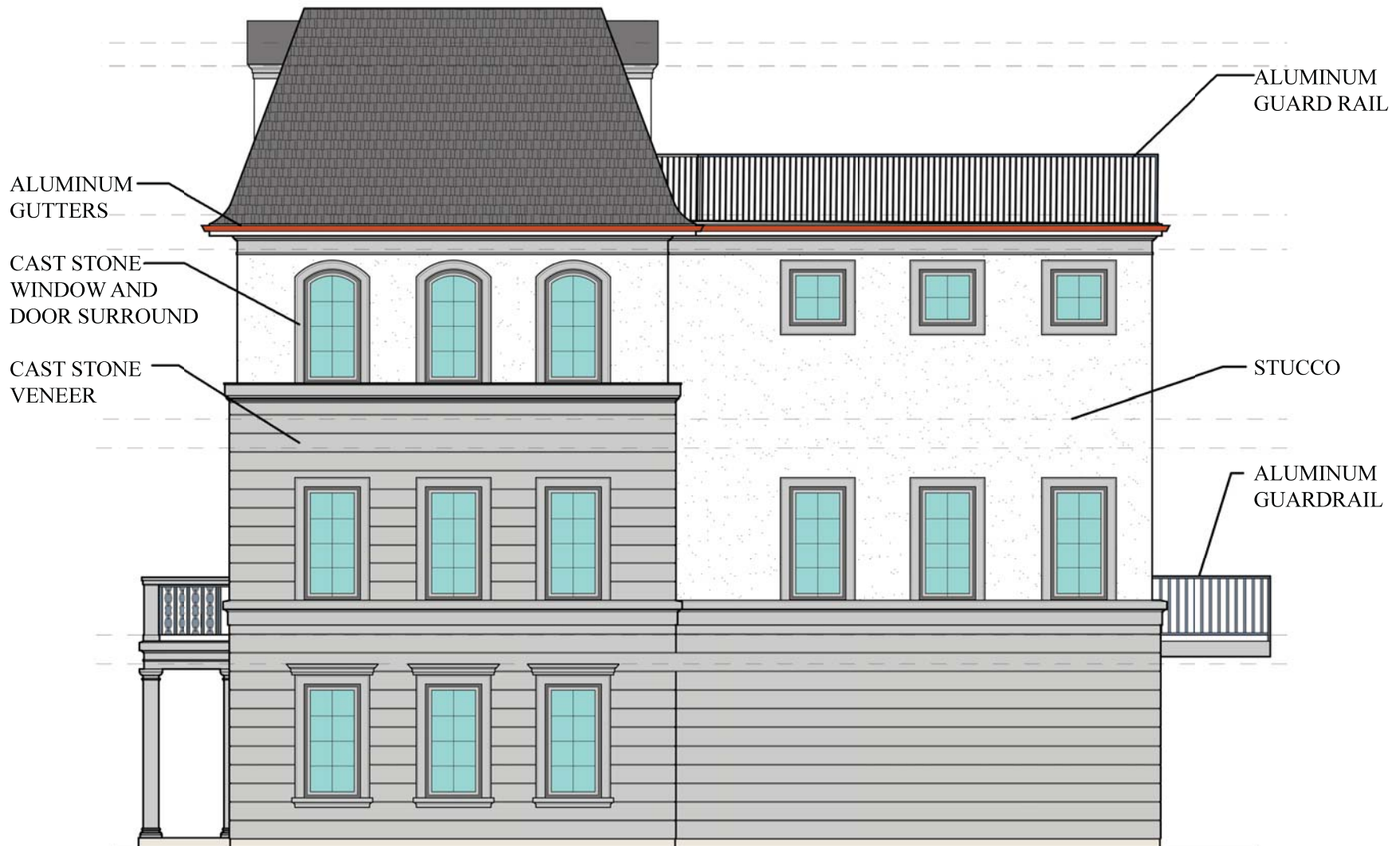
Main Building - East Elevation



Material Ratio:  
 Masonry: 969.6 sf (64.4%)  
 Stucco: 534.7 sf (35.6%)

**Duplex Building (Fronting Main Street)**  
**West Elevation**

Submittal	Date
Design Review	6-25-2018
Des. Revision	7-24-2018



DuPlex Building - South Elevation

Material Ratio:  
Masonry: 1016.8 sf (62.2%)  
Stucco: 617.2 sf (37.8%)

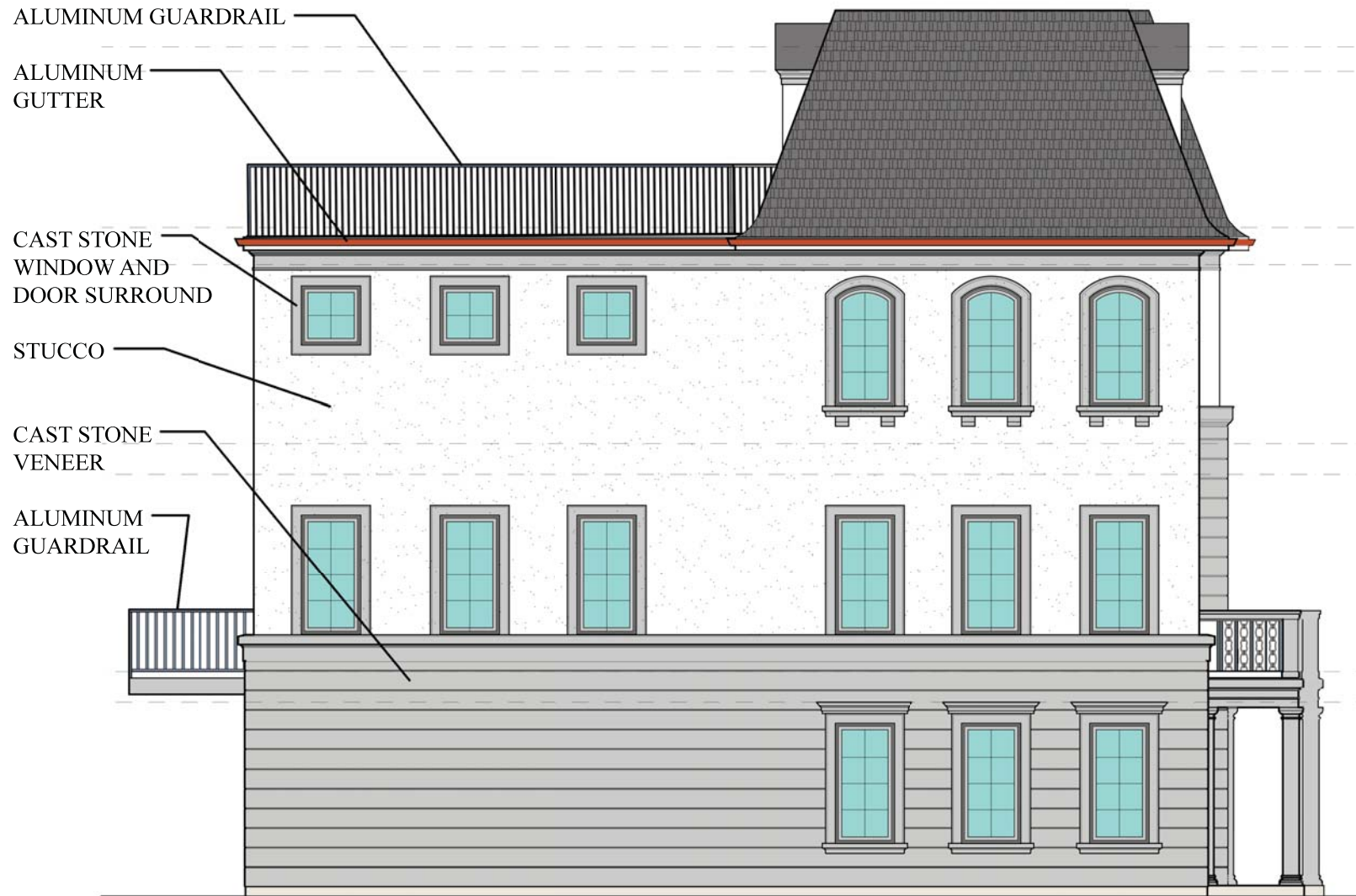
Submittal      Date  
Design Review    6-25-2018  
Des. Revision    7-24-2018



Duplex Building - East Elevation

Material Ratio:  
Masonry: 720.5 sf (47.0%)  
Stucco: 783.4 sf (53.0%)

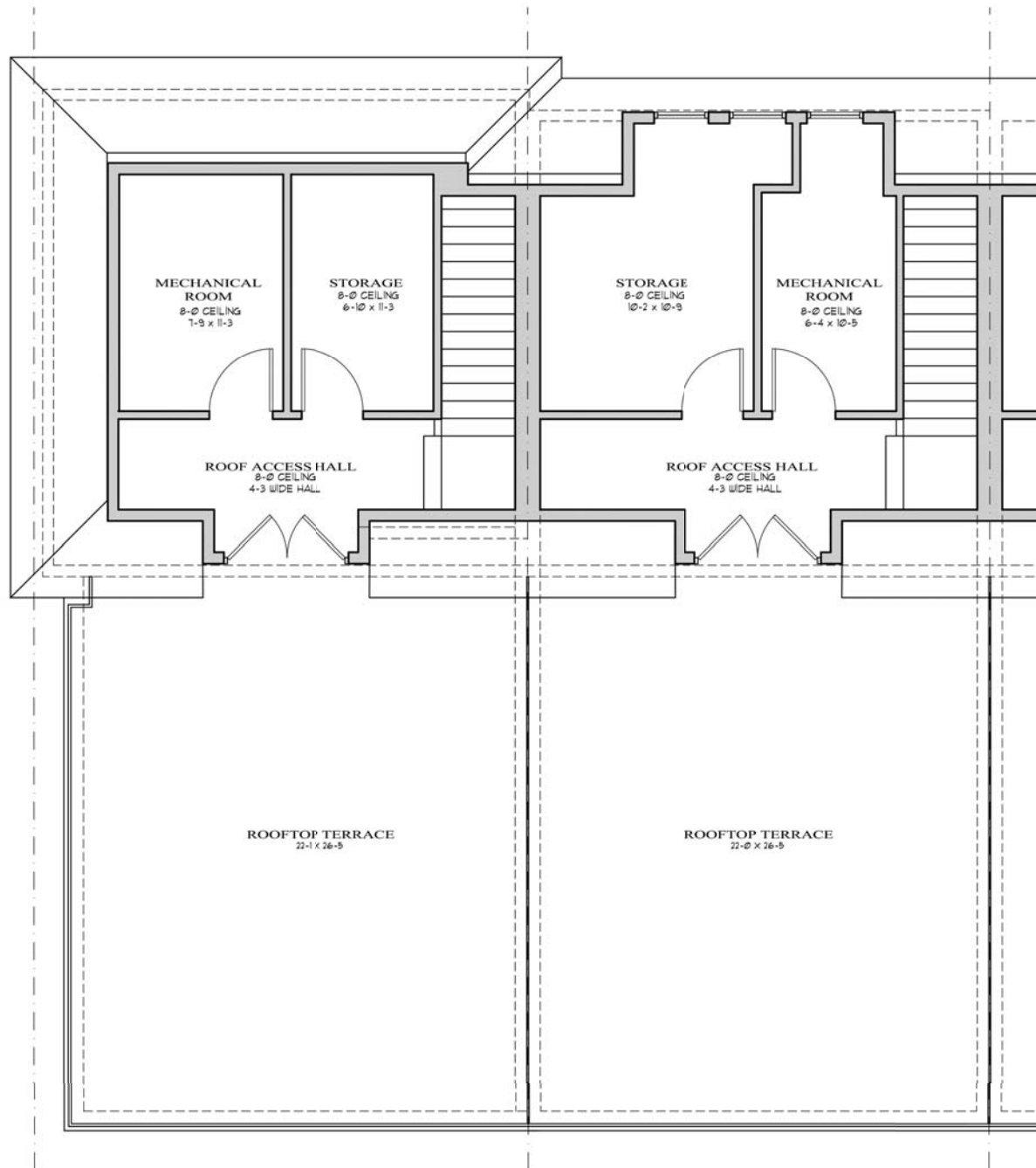
Submittal            Date  
Design Review      6-25-2018  
Des. Revision        7-24-2018



Material Ratio:  
Masonry: 1016.8 sf (62.2%)  
Stucco: 617.2 sf (37.8%)

## Duplex Building - North Elevation





**Attic Level**  
Typical End Unit

Conditioned Space: 355 sf  
Area of Floor Below: 1109 sf

**Attic Level**  
Typical Interior Unit

Conditioned Space: 413 sf  
Area of Floor Below: 1060 sf