

SIGN LEGEND

R5-1
24" X 24"

R7-8
12" X 18"

R7-1101

VAN ACCESSIBLE
2" SERIES D LETTERS

PAVEMENT LEGEND

PROPOSED LIMITS OF CONCRETE DRIVEWAY OR SIDEWALK. SEE NOTE 4 BELOW.

PROPOSED BRICK PAVER

PROPOSED REVERSE PITCH GUTTER

DEPRESSED CURB, SEE NOTE 1, BELOW

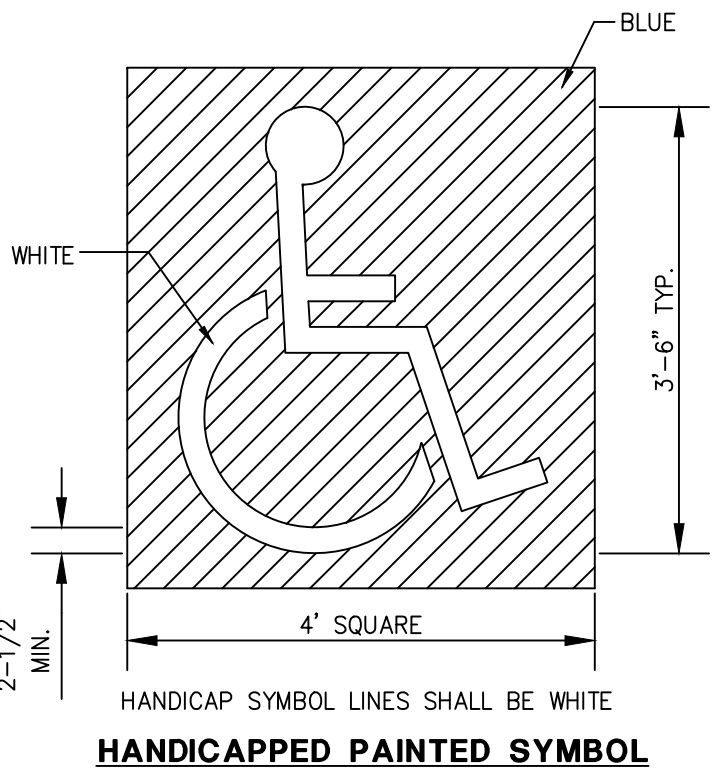
ADA DETECTABLE WARNING TILE (24 INCH MINIMUM WIDTH)

VARIABLE CURB HEIGHT, SEE GRADING PLAN FOR CURB ELEVATIONS

CONCRETE CURB AND GUTTER TO BE REMOVED AND REPLACED

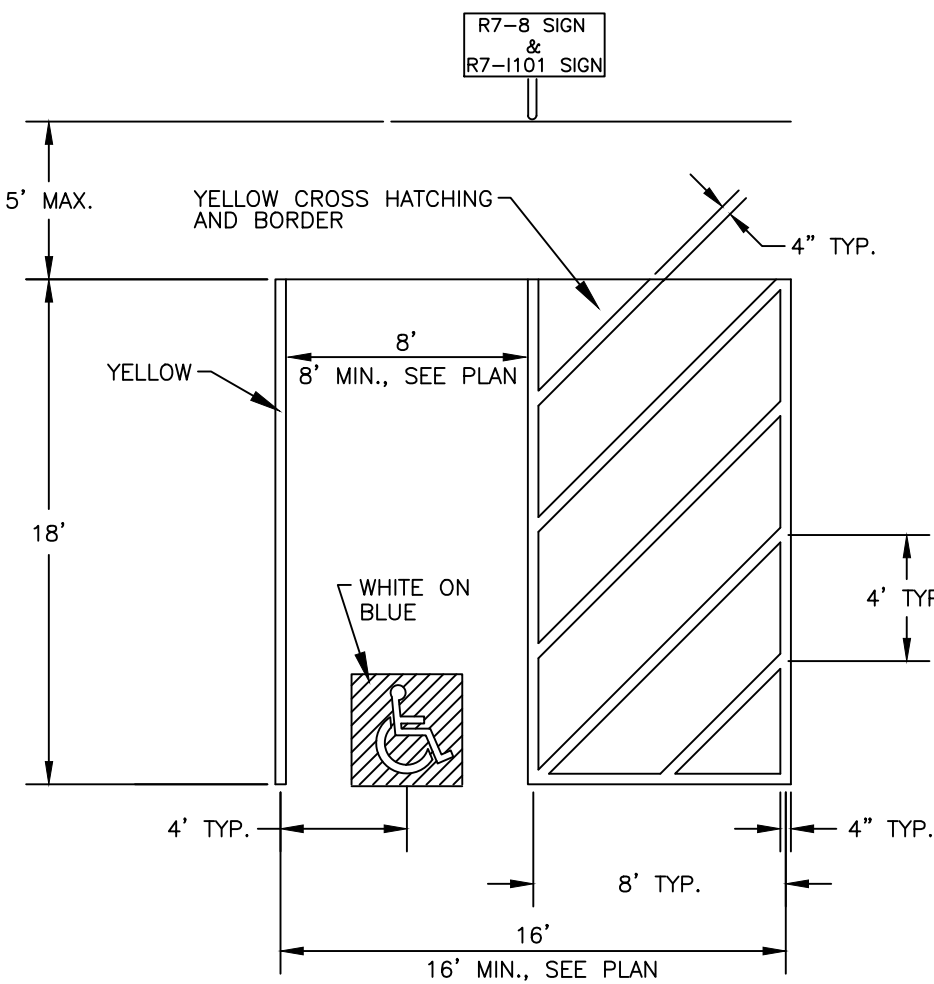
CONCRETE CURB TO BE MILLED

- NOTES:**
- B6.12 CONCRETE CURB AND GUTTER HAS BEEN DIMENSIONED TO THE BACK OF CURB. A MINIMUM OF 4 INCHES OF AGGREGATE BASE SHALL BE PLACED BENEATH ALL CURB AND SHALL EXTEND 18 INCHES BEYOND BACK OF CURB. GUTTER FLAG SHALL BE 10 INCHES THICK. PROVIDE 12:1 TRANSITION FROM DEPRESSED CURB TO NOMINAL CURB HEIGHT (6" MINIMUM).
 - UNLESS OTHERWISE NOTED, ALL PAVEMENT MARKINGS SHALL BE YELLOW PAINT, 4-INCHES WIDE.
 - THE EXISTING PAVEMENT SECTION OF WASHINGTON STREET AND 7TH AVENUE IS UNKNOWN. UTILITY TRENCH PAVING SECTION DETAILS FOR RIGID AND FLEXIBLE PAVEMENTS HAVE BEEN INCLUDED IN DRAWINGS.
 - CONCRETE SIDEWALK SHALL BE:
 - 5" PORTLAND CEMENT CONCRETE
 - 4" COMPACTED AGGREGATE SUB-BASE (CA-6)CONCRETE SIDEWALK THROUGH DRIVEWAY AND CONCRETE DRIVEWAY SHALL BE:
 - 8" PORTLAND CEMENT CONCRETE
 - 4" COMPACTED AGGREGATE SUB-BASE (CA-6)
 - SEE DETAIL SHEETS FOR "DOWNTOWN NAPERVILLE STREETScape STANDARDS FOR PAVEMENT PATTERNS, CORNER/HANDICAP RAMP DETAIL, TYPICAL SECTIONS FOR DRIVEWAYS, HANDICAP RAMPS, PARKWAY SECTIONS, MATERIALS, AND COLORS.
 - PEDESTRIAN BOLLARD LIGHT TO MATCH LIGHTING INSTALLED AT 720 WASHINGTON STREET IMMEDIATELY TO THE NORTH.

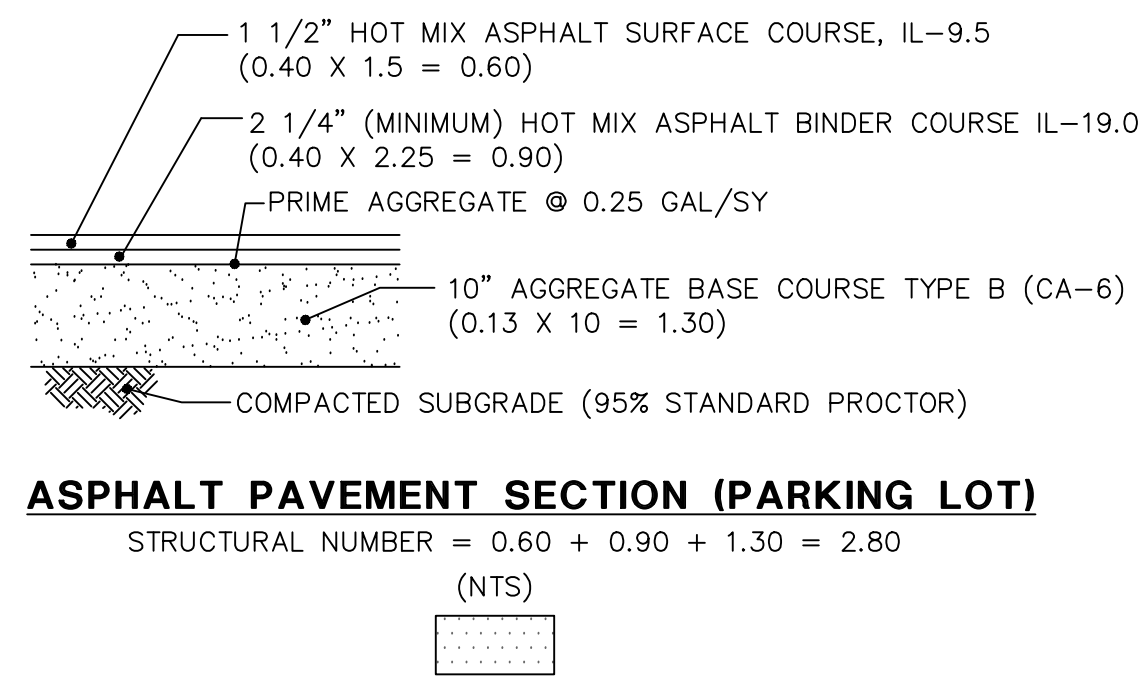


- NOTES FOR HANDICAP PARKING STALLS:**
- EACH PARKING SPACE SHALL BE AT LEAST EIGHT FEET WIDE, WITH AN EIGHT FOOT WIDE ACCESS AISLE, FOR A TOTAL OF SIXTEEN FEET.
 - ADJACENT HANDICAPPED PARKING SHALL NOT SHARE A COMMON ACCESS AISLE.
 - SIGNS SHALL BE VERTICALLY MOUNTED ON A POST OR A WALL AT THE FRONT CENTER OF THE PARKING SPACE NO MORE THAN FIVE (5) FEET HORIZONTALLY FROM THE FRONT OF A PARKING SPACE AND SET A MINIMUM OF FOUR (4) FEET FROM THE FINISHED GRADE TO THE BOTTOM OF THE SIGN.
 - HANDICAPPED PARKING SIGNS SHALL ALSO EXHIBIT THE WORDS "\$250.00 FINE".
 - PARKING SPACES DESIGNED FOR PERSONS WITH DISABILITIES AND ACCESSIBLE PASSENGER LOADING ZONES THAT SERVE A PARTICULAR BUILDING, SHALL BE LOCATED ON THE SHORTEST POSSIBLE ACCESSIBLE ENTRANCE OF THE BUILDING.
 - IN SEPARATE PARKING STRUCTURES OR LOTS THAT DO NOT SERVE A PARTICULAR BUILDING, PARKING SPACES FOR PERSONS WITH DISABILITIES SHALL BE LOCATED ON THE SHORTEST POSSIBLE CIRCULATION ROUTE TO AN ACCESSIBLE PEDESTRIAN ENTRANCE OF THE PARKING FACILITY.

| # OF HANDICAP SPACES REQUIRED PER # OF OFF STREET PARKING | | | |
|---|---------------------------------------|--|--|
| TOT. OFF STREET PRKG SPACES REQUIRED | ACCESSIBLE PRKG SPACES REQD MIN. # OF | | |
| 1 TO 20 | 1 | | |
| 21 TO 50 | 2 | | |
| 51 TO 75 | 3 | | |
| 76 TO 100 | 4 | | |
| 101 TO 150 | 5 | | |
| 151 TO 200 | 6 | | |
| 201 TO 300 | 7 | | |
| 301 TO 400 | 8 | | |
| 401 TO 500 | 9 | | |
| 501 TO 1000 | 2% OF TOTAL NUMBER | | |
| OVER 1000 | 20 PLUS 1 FOR EACH 100 OVER 1000 | | |



ACCESSIBLE PARKING SPACE MARKINGS
N.T.S.



ASPHALT PAVEMENT SECTION (PARKING LOT)

STRUCTURAL NUMBER = 0.60 + 0.90 + 1.30 = 2.80

(NTS)

| | | | REVISIONS | | |
|-----|----------|----------------------------------|-----------|------|-------------|
| NO. | DATE | DESCRIPTION | NO. | DATE | DESCRIPTION |
| 1 | 08/20/18 | REV. PER CITY RVW DATED 08/01/18 | | | |
| | | | | | |
| | | | | | |
| | | | | | |
| | | | | | |

| TAILORING BY MONICA | | | | | |
|-----------------------|----------------|----------------------|--------------|--|--|
| DIMENSION PLAN | | | | | |
| DRN./CKD. BY: SRH/JGC | FILE: 1351315E | FLD. BK./PG.: 266/50 | SHEET NO. 11 | | |
| SCALE: 1"=10' | DATE: 07/06/18 | JOB NO.: 135.1315 | 5 OF 11 | | |