

2 SOUTH ELEVATION  
SCALE: 1/8" = 1'-0"

**NOTE:**  
PER SECTION 5-10-3-12, EQUIPMENT SCREENING SHALL BE PROVIDED IN THE FORM OF PARAPET WALLS, SUCH THAT ALL ROOF TOP EQUIPMENT AND VENTS ARE COMPLETELY ENCLOSED ON ALL SIDES TO THE FULL HEIGHT OF THE UNITS PLUS ANY SUPPORTING CURB WORK.



1 EAST ELEVATION  
SCALE: 1/8" = 1'-0"

**OKW**  
Architects

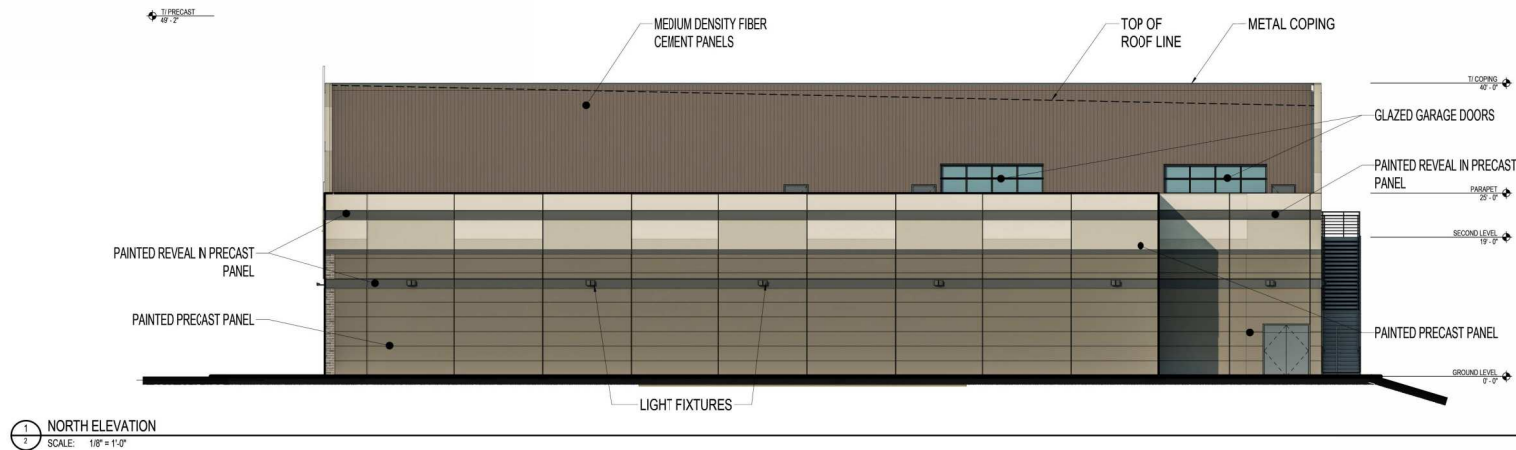
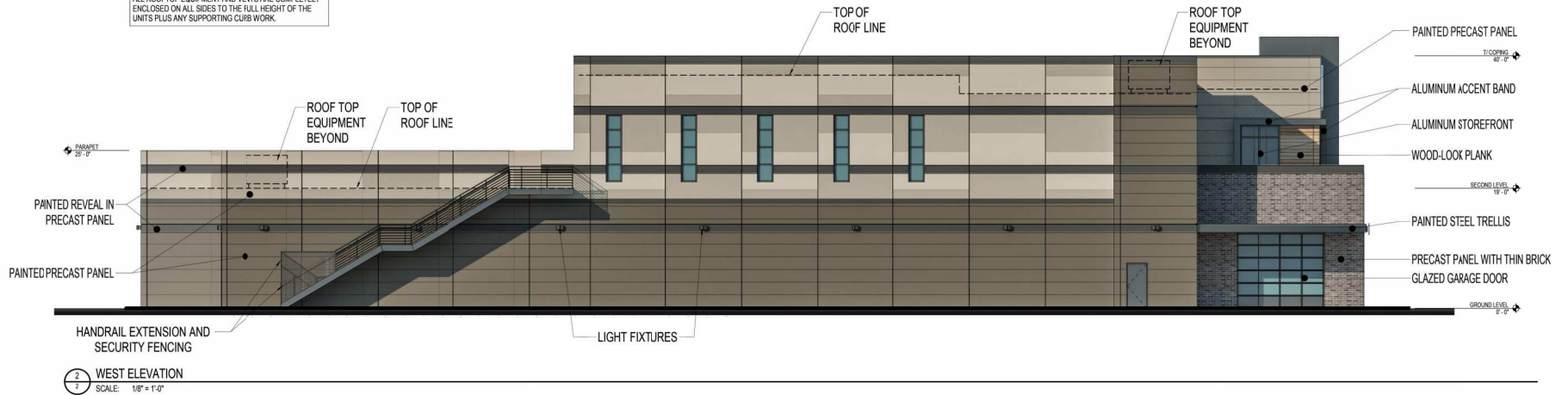
OKW ARCHITECTS  
600 W. Jackson, Suite 250  
Chicago, IL 60661



**WHIRLYBALL**  
3103 ODYSSEY COURT  
NAPERVILLE, IL 60563  
06/14/18 Project 16070

**NOTE:**

PER SECTION 5-10-3-12, EQUIPMENT SCREENING SHALL BE PROVIDED IN THE FORM OF PARAPET WALLS, SUCH THAT ALL ROOF TOP EQUIPMENT AND VENTS ARE COMPLETELY ENCLOSED ON ALL SIDES TO THE FULL HEIGHT OF THE UNITS PLUS ANY SUPPORTING CURB WORK.



**OKW**  
Architects

OKW ARCHITECTS  
600 W. Jackson, Suite 250  
Chicago, IL 60661



**WHIRLYBALL**  
3103 ODYSSEY COURT  
NAPERVILLE, IL 60563  
06/14/18 Project 16070