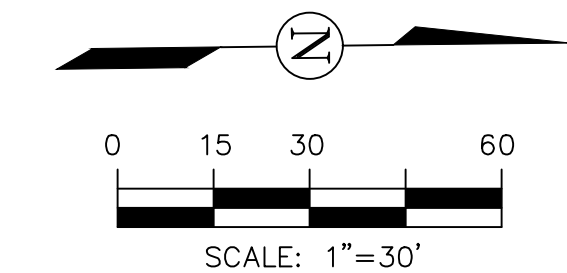


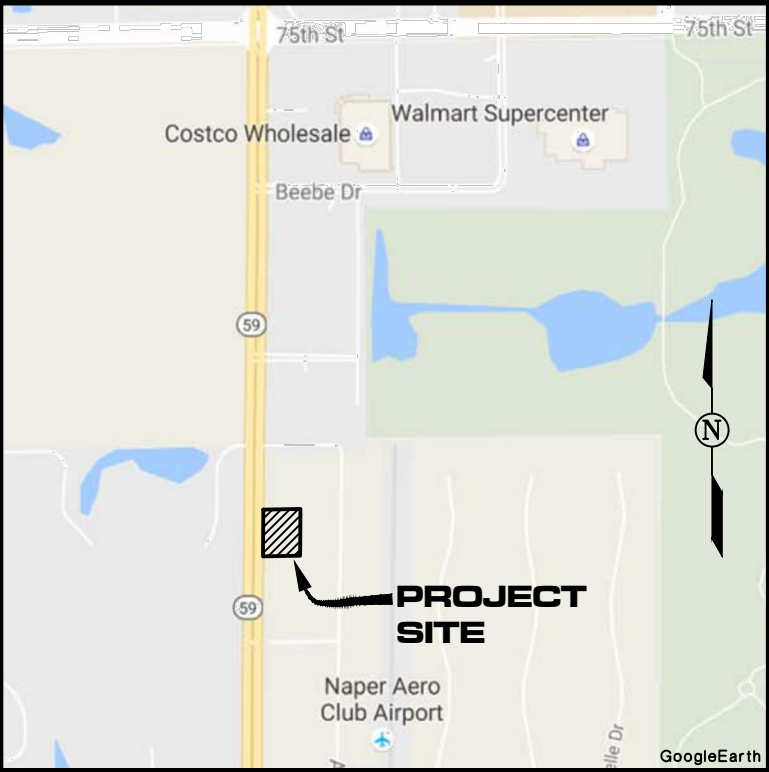
# TREE PRESERVATION PLAN FOR BEST BUY CARPET AND GRANITE NAPERVILLE, ILLINOIS

OF PART OF THE NORTHWEST QUARTER OF SECTION 34, TOWNSHIP 38 NORTH, RANGE 9 EAST OF THE THIRD  
 PRINCIPAL MERIDIAN, DUPAGE COUNTY, ILLINOIS

PIN: 07-34-100-027  
 07-34-100-028  
 07-34-100-029



BASIS OF BEARINGS:  
 ILLINOIS STATE PLANE - EAST ZONE



LOCATION MAP  
 N.T.S.

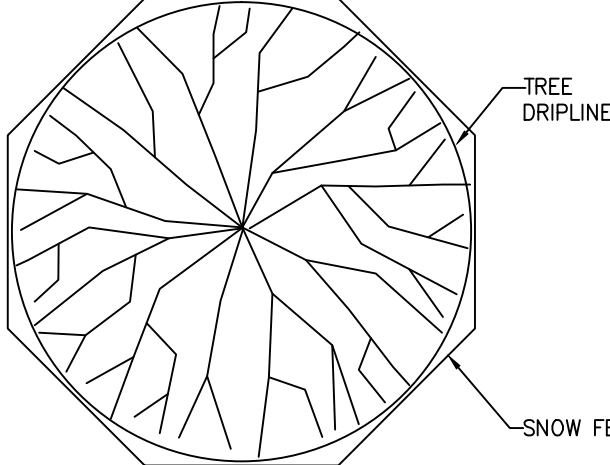
LEGEND

- SUBDIVISION BOUNDARY
- EXISTING LOT LINE
- CENTER LINE
- SIZE TAG DECIDUOUS TREE
- SIZE TAG CONIFEROUS TREE
- TREE TO BE TRANSPLANTED
- TREE TO REMAIN WITH TREE PROTECTION FENCE
- TREE TO BE REMOVED DURING INFRASTRUCTURE INSTALLATION
- LIMITS OF ROOT PRUNING

CONDITION KEY CODE

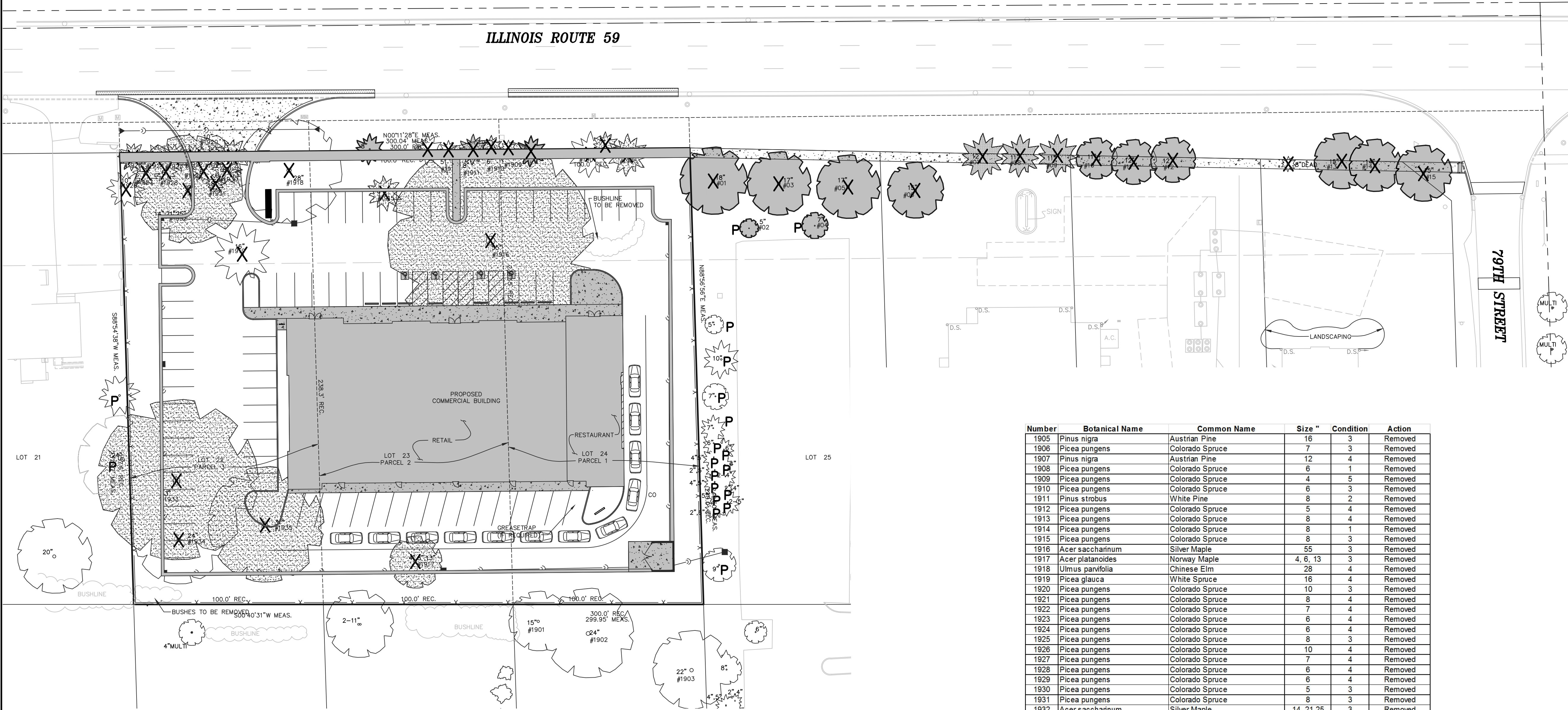
- 1. VERY GOOD
- 2. GOOD
- 3. FAIR
- 4. POOR
- 5. DEAD, INVASIVE, TO BE REMOVED, DETERIORATED CONDITION

RECOMMENDED PRACTICES FOR TREES TO BE SAVED



- SNOW FENCE SHALL EXTEND TO THE DRIPLINE OF THE TREE. THE SNOW FENCE SHALL BE HIGH ENOUGH SO AS TO BE VISIBLE TO ALL CONSTRUCTION PERSONNEL.
- GRADE CHANGES, UTILITY TRENCHES, STORAGE OF CONSTRUCTION MATERIAL, DUMPING OF WASTE OR STORAGE OF CONSTRUCTION EQUIPMENT SHALL NOT BE ALLOWED WITHIN SNOW FENCING.
- IF A UTILITY MUST BE WITHIN 15 FEET OF A TREE TRUNK, IT IS RECOMMENDED THAT IT BE AUGERED.
- ALL TREES TO BE SAVED WHICH HAVE BEEN SUBJECTED TO CONSTRUCTION ACTIVITY WITHIN THE DRIPLINE SHOULD BE SELECTIVELY THINNED 10% BY AN ARBORIST SKILLED AT THE SELECTIVE THINNING PROCEDURE. NONE OF THE TREES SHALL BE TOPPED, HEADED BACK, SKINNED (REMOVAL OF THE INTERIOR BRANCHES), OR CLIMBED WITH SPIKES. ALL DEAD WOOD SHOULD BE REMOVED TO AVOID HAZARD.
- IT IS RECOMMENDED THAT FOLLOWING CONSTRUCTION, TREES BE MAINTAINED IN THEIR NATIVE CONDITION. NO LAWN SHOULD BE PLACED AROUND THE TREES. IT IS RECOMMENDED THAT THE AREA BE MULCHED WITH 2 INCHES OF DECOMPOSED LEAVES AND 2 INCHES OF WOOD CHIPS OR BARK.

Number	Botanical Name	Common Name	Size "	Condition	Action
1905	Pinus nigra	Austrian Pine	16	3	Removed
1906	Picea pungens	Colorado Spruce	7	3	Removed
1907	Pinus nigra	Austrian Pine	12	4	Removed
1908	Picea pungens	Colorado Spruce	6	1	Removed
1909	Picea pungens	Colorado Spruce	4	5	Removed
1910	Picea pungens	Colorado Spruce	6	3	Removed
1911	Pinus strobus	White Pine	8	2	Removed
1912	Picea pungens	Colorado Spruce	5	4	Removed
1913	Picea pungens	Colorado Spruce	8	4	Removed
1914	Picea pungens	Colorado Spruce	8	1	Removed
1915	Picea pungens	Colorado Spruce	8	3	Removed
1916	Acer saccharinum	Silver Maple	55	3	Removed
1917	Acer platanoides	Norway Maple	4, 6, 13	3	Removed
1918	Ulmus parvifolia	Chinese Elm	28	4	Removed
1919	Picea glauca	White Spruce	16	4	Removed
1920	Picea pungens	Colorado Spruce	10	3	Removed
1921	Picea pungens	Colorado Spruce	8	4	Removed
1922	Picea pungens	Colorado Spruce	7	4	Removed
1923	Picea pungens	Colorado Spruce	6	4	Removed
1924	Picea pungens	Colorado Spruce	6	4	Removed
1925	Picea pungens	Colorado Spruce	8	3	Removed
1926	Picea pungens	Colorado Spruce	10	4	Removed
1927	Picea pungens	Colorado Spruce	7	4	Removed
1928	Picea pungens	Colorado Spruce	6	4	Removed
1929	Picea pungens	Colorado Spruce	6	4	Removed
1930	Picea pungens	Colorado Spruce	5	3	Removed
1931	Picea pungens	Colorado Spruce	8	3	Removed
1932	Acer saccharinum	Silver Maple	14, 21, 25	3	Removed
1933	Acer saccharinum	Silver Maple	43	3	Removed
1934	Acer rubrum	Red Maple	24	4	Removed
1935	Acer saccharinum	Silver Maple	31	3	Removed
1	Gleditsia triacanthos inermis	Honeylocust	18	1	Removed
2	Ginkgo biloba	Ginkgo	5	1	Saved
3	Gleditsia triacanthos inermis	Honeylocust	17	1	Removed
4	Ginkgo biloba	Ginkgo	7	1	Saved
5	Gleditsia triacanthos inermis	Honeylocust	17	1	Removed
6	Gleditsia triacanthos inermis	Honeylocust	15	1	Removed
7	Pinus nigra	Austrian Pine	12	2	Removed
8	Pinus nigra	Austrian Pine	11	2	Removed
9	Pinus nigra	Austrian Pine	11	2	Removed
10	Gleditsia triacanthos inermis	Honeylocust	11	1	Removed
11	Gleditsia triacanthos inermis	Honeylocust	12	1	Removed
12	Gleditsia triacanthos inermis	Honeylocust	12	1	Removed
13	Gleditsia triacanthos inermis	Honeylocust	15	1	Removed
14	Gleditsia triacanthos inermis	Honeylocust	14	1	Removed
15	Gleditsia triacanthos inermis	Honeylocust	15	1	Removed



COPYRIGHT 2017 ROAKE AND ASSOCIATES, INC. ALL RIGHTS RESERVED

**ROAKE AND ASSOCIATES, INC.**  
 CONSULTING ENGINEERS • LAND SURVEYORS • PLANNERS  
 1884 QUINCY AVENUE, SUITE 100A • NAPERVILLE, ILLINOIS 60540  
 TEL (630) 366-3232 • FAX (630) 366-3287

PREPARED FOR:  
**BEST BUY CARPET AND GRANITE**  
 585 SOUTH ROUTE 59  
 AURORA, ILLINOIS 60540  
 TEL. (630) 417-9162  
 TEL. (630) 686-2240

REVISIONS					
NO.	DATE	DESCRIPTION	NO.	DATE	DESCRIPTION
1	10-11-17	REV. PER CITY RW. (DATED 9-15-17)			

**BEST BUY CARPET AND GRANITE**

**TREE PRESERVATION PLAN**

DRN./CKD. BY: SRH/JGC	FILE: 8381TREE	FLD. BK./PG.: 263/76-78	SHEET NO. 1 OF 1
SCALE: 1"=30'	DATE: 08/21/17	JOB NO.: 838.001	