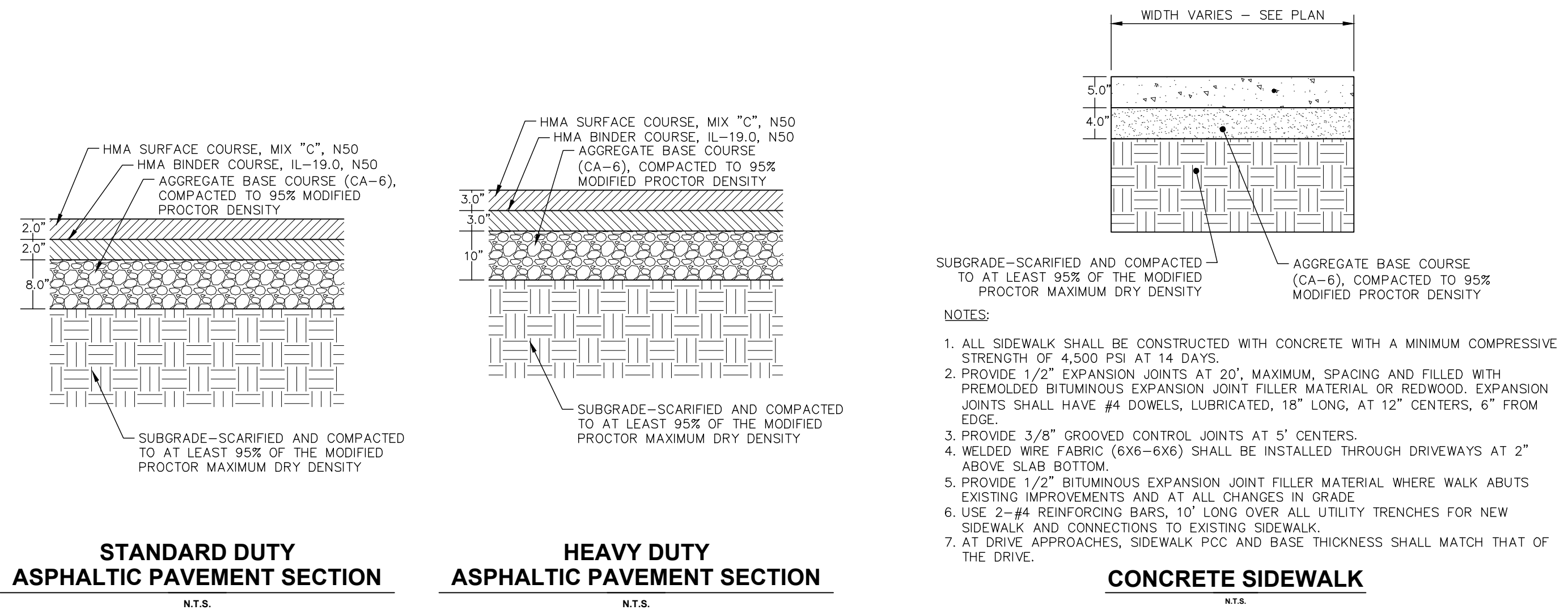
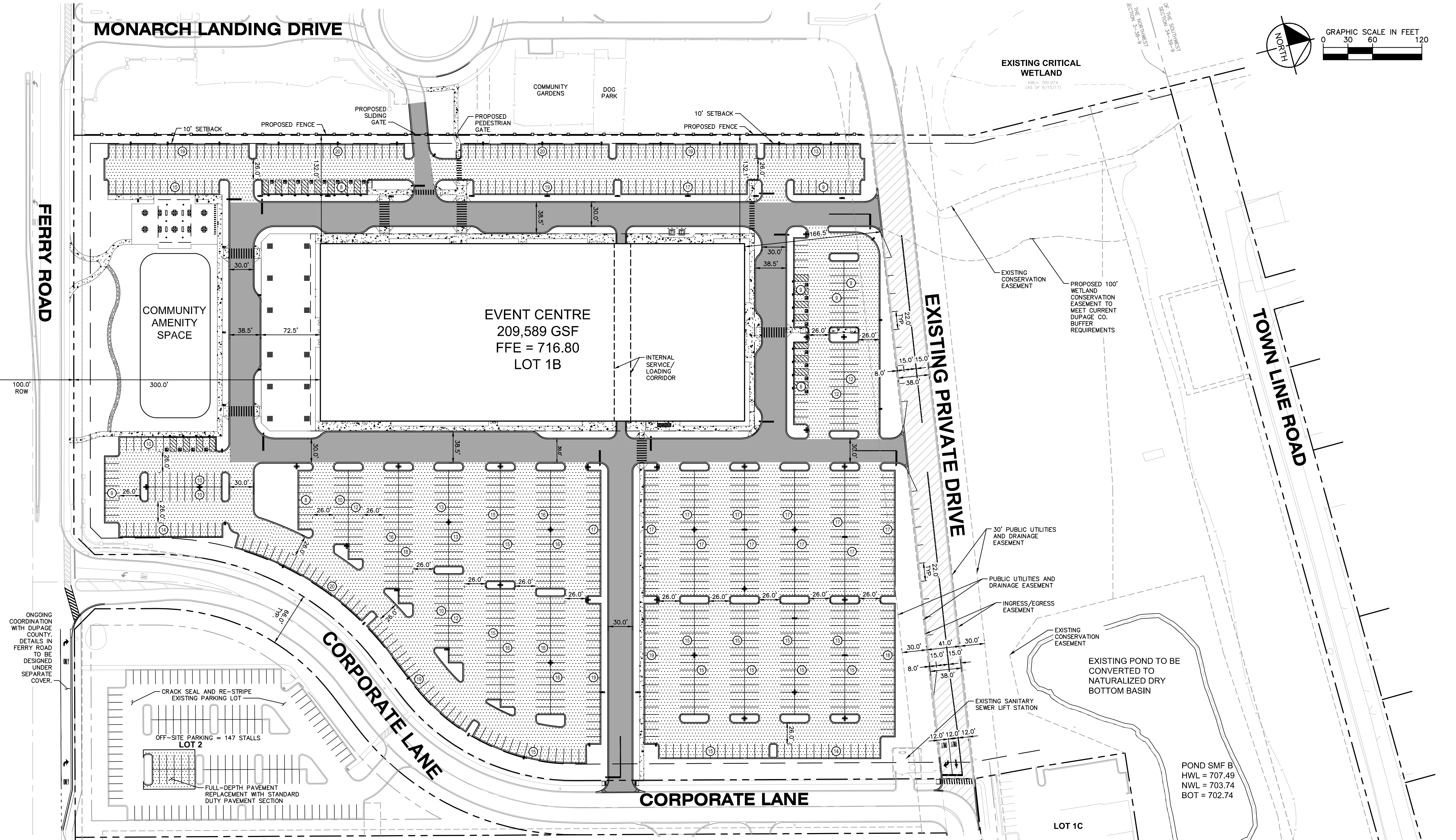


Drawing name: K:\GIS\DEV\168646000\_Columas-Sports-Arena-Naperville\_IL\2\_Design\CAD\PlanSheets\_FINAL\ENGINEERING\22.0 - OVERALL SITE & PAVEMENT PLAN.dwg 2.0 Jun 05, 2018 8:48pm by: Taylor Eisebich

This document, together with the concepts and designs presented herein, is an instrument of service, and its use is limited to the specific project and client for which it was prepared. Reuse of this document without written authorization and adaptation by Kimley-Horn and Associates, Inc. shall be without liability to Kimley-Horn and Associates, Inc.



- ### GENERAL NOTES
- ALL DIMENSIONS REFER TO THE FACE OF CURB UNLESS OTHERWISE NOTED.
  - BUILDING DIMENSIONS ARE TO THE OUTSIDE FACE OF BUILDING UNLESS OTHERWISE NOTED.
  - REFER TO ARCHITECTURAL AND STRUCTURAL PLANS TO VERIFY ALL BUILDING DIMENSIONS.
  - RADII ADJACENT TO PARKING STALL AND NOT DIMENSIONED ON THIS PLAN SHALL BE 3'-FEET, TYPICAL.
  - REFER TO ARCHITECTURAL PLANS FOR MONUMENT SIGN DETAILS.
  - SEE MEP PLANS FOR SITE ELECTRICAL DRAWINGS.
  - ALL PROPOSED ON-SITE STRIPING SHALL BE PAINTED UNLESS OTHERWISE NOTED.

### PARKING SUMMARY

PARKING SPACES REQUIRED (10/1000 SF GFA)	=	2,096 SPACES
STANDARD PARKING SPACES PROVIDED ON-SITE	=	952 SPACES
ACCESSIBLE PARKING SPACES REQUIRED	=	20 SPACES
ACCESSIBLE PARKING SPACES PROVIDED	=	20 SPACES
PARKING SPACES PROVIDED OFF-SITE ON LOT 2	=	147 SPACES
TOTAL PARKING SPACES PROVIDED	=	1,119 SPACES
STANDARD PARKING STALLS - 9' X 17.5'		

### PAVING AND CURB LEGEND

	STANDARD DUTY ASPHALTIC PAVEMENT SEE CONSTRUCTION DETAILS FOR PAVEMENT SECTION
	HEAVY DUTY ASPHALTIC PAVEMENT SEE CONSTRUCTION DETAILS FOR PAVEMENT SECTION
	CONCRETE SIDEWALK SEE CONSTRUCTION DETAILS FOR PAVEMENT SECTION
	STANDARD PITCH CONCRETE CURB AND GUTTER
	REVERSE PITCH CONCRETE CURB AND GUTTER
	DEPRESSED CURB AND GUTTER



Call Before You Dig  
**1-800-892-0123**

© 2018 KIMLEY-HORN AND ASSOCIATES, INC.  
1001 WARENVILLE ROAD, SUITE 350,  
NAPERVILLE, IL 60532  
WWW.KIMLEY-HORN.COM

DESIGNED BY: TIE  
DRAWN BY: IC  
CHECKED BY: WAW

REVISIONS

DATE

BY

CITYGATE CENTRE  
NORTH  
CORPORATE LANE  
NAPERVILLE, IL 60563

OVERALL SITE & PAVEMENT PLAN

ORIGINAL ISSUE:  
3/23/2018  
KHA PROJECT NO.  
168646000

SHEET NUMBER  
**C2.0**

Kimley»Horn

© 2018 KIMLEY-HORN AND ASSOCIATES, INC.  
1001 WARENVILLE ROAD, SUITE 350,  
NAPERVILLE, IL 60532  
WWW.KIMLEY-HORN.COM

CALAMOS INVESTMENTS

131 HARBOUR CONTRACTORS, INC.

SCALE: AS NOTED

DESIGNED BY: TIE

DRAWN BY: IC

CHECKED BY: WAW

REVISIONS

DATE

BY