





Land Use and Height Survey

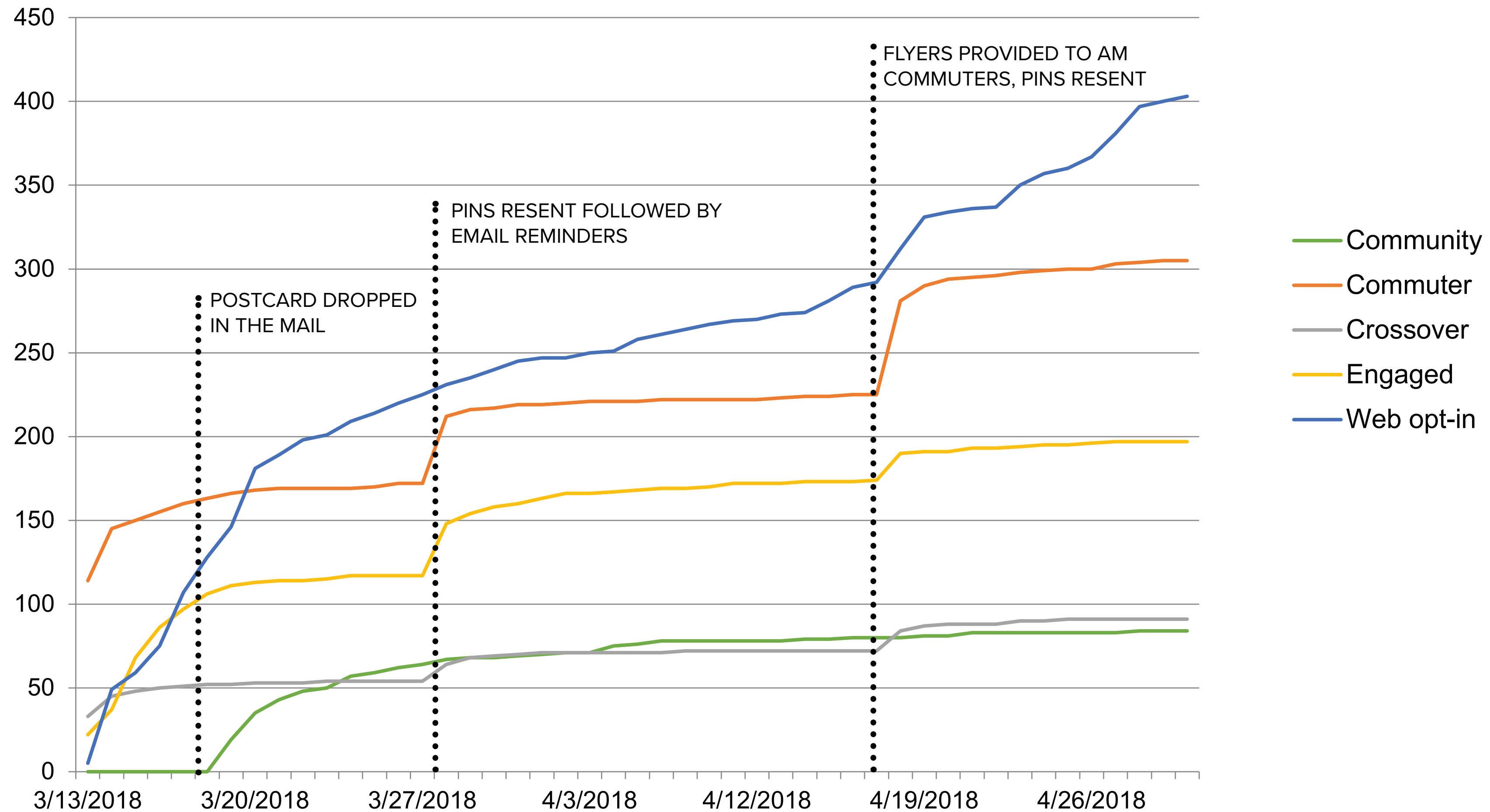


GROUP	ENGAGED ONLY		COMMUTERS ONLY		CROSSOVER		RESIDENT SAMPLE	OPT-IN
METHOD	EMAIL		EMAIL		EMAIL		MAIL POSTCARD	WEBSITE
SENT	MARCH 13 & 28		MARCH 13 & 28		MARCH 13 & 28		MARCH 19	MARCH 13
COUNT	721		3,700		700		5,000	N/A
BOUNCE	14%	103	11%	396	15%	108	N/A	N/A
OPEN	57%	353	43%	1,408	45%	265	N/A	543

RESPONSE	197		305		91		84	403
RATE	32%		9%		15%		2%	N/A

* Data as of April 30, 2018. Response rates are determined by removing the bounced emails from the total sent.

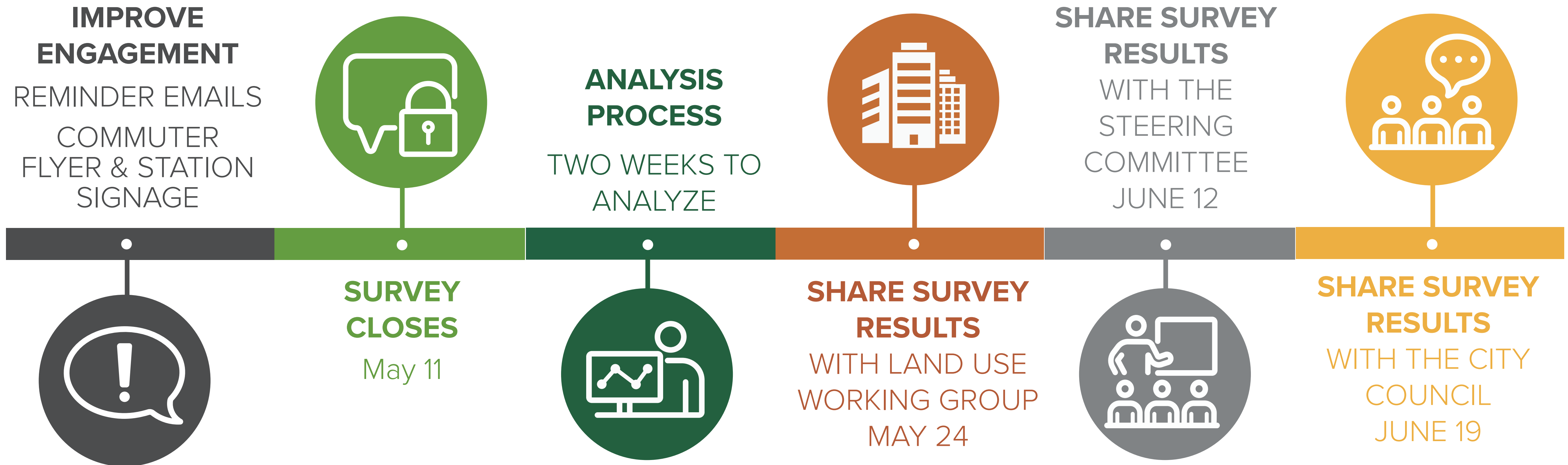
SURVEY RESPONSES





SURVEY COMMUNICATION SCHEDULE

March 13	Survey went live and PINs were sent out to City Engaged list and City Commuter list
March 15	Survey PINs were sent to Ryan Engaged list
March 19	Postcards were dropped in the mail
March 28	PINs were resent to all email lists
March 29	Survey reminder included in the Ryan 5th Avenue eNewsletter
March 30	Survey reminder was included in Commuter Connect and the City's 5th Avenue eNewsletter
April 13	Post signage at the train station (through April 30)
April 13	Survey reminder included in Commuter Connect and the City's 5th Avenue eNewsletter
April 18	Pass out flyers at the train station
April 18	PINs resent
April 20	Survey reminder included in Commuter Connect and the City's 5th Avenue eNewsletter
April 26	Survey reminder included in the Ryan 5th Avenue eNewsletter
April 27	Survey reminder included in Commuter Connect and the City's 5th Avenue eNewsletter
May 4	Survey reminder included in Commuter Connect and the City's 5th Avenue eNewsletter
May 11	Survey reminder included in Commuter Connect and the City's 5th Avenue eNewsletter





	PARKING	STORM WATER	DESIGN	LAND USE	TRAFFIC/TRANSPORTATION	PED SAFETY/CONNECTIVITY
MTG #1	<ul style="list-style-type: none"> ✓ REVIEW EXISTING INFORMATION 	<ul style="list-style-type: none"> ✓ REVIEW EXISTING INFORMATION 	<ul style="list-style-type: none"> ✓ DESIGN NARRATIVE 	<ul style="list-style-type: none"> ✓ REVIEW RFQ AND GROUP INPUT 	<ul style="list-style-type: none"> ✓ REVIEW PREVIOUS STUDIES ✓ FEASIBILITY STUDY 	<ul style="list-style-type: none"> ✓ REVIEW EXISTING INFORMATION ✓ DISCUSS COMMUTER AND PEDESTRIAN ROUTES
MTG #2	<ul style="list-style-type: none"> ✓ REVIEW CASE STUDIES ✓ RAMP BEST PRACTICES ✓ FUTURE TRENDS 	<ul style="list-style-type: none"> ✓ REVIEW COMBINED MAP ✓ DEVELOPMENT REQUIREMENTS ✓ OUTFLOW LOCATIONS ✓ CONSULTANT UPDATE 	<ul style="list-style-type: none"> ✓ REVIEW CITY DESIGN CRITERIA ✓ NARRATIVE BRAINSTORMING ✓ REVIEW GROUP INPUT ✓ DISCUSS SUSTAINABILITY AND ACCESSIBILITY 	<ul style="list-style-type: none"> ✓ REVIEW GROUP INPUT ✓ 2009 5TH AVENUE STUDY ✓ NAPERVILLE FAIR HOUSING STUDY ✓ PRELIMINARY MARKET STUDIES ✓ NARRATIVE BRAINSTORMING 	<ul style="list-style-type: none"> ✓ REVIEW GROUP INPUT ✓ TRAFFIC IMPROVEMENT SKETCHES ✓ 202 METRA/PACE STUDY ✓ METRA/PACE NOTES 	<ul style="list-style-type: none"> ✓ PEDESTRIAN PRIORITIES MAP ✓ DISCUSS POTENTIAL IMPROVEMENTS
MTG #3	<ul style="list-style-type: none"> ✓ "PLOP" TEST ✓ COST DISCUSSION ✓ TEMPORARY PARKING MATRIX ✓ COMMUTER DECK FUNCTION 	<ul style="list-style-type: none"> ✓ STORM WATER MATRIX ✓ CONSULTANT FINDINGS 	<ul style="list-style-type: none"> ✓ AESTHETIC CHARACTER AND QUALITY ✓ VIRTUAL TOUR ✓ NARRATIVE DRAFT 	<ul style="list-style-type: none"> ✓ "THE GOOD, BAD AND THE UGLY" ✓ LAND USE SURVEY RESULTS ✓ NARRATIVE DRAFT 	<ul style="list-style-type: none"> ✓ ROADWAY COST DISCUSSION ✓ PACE LAYOUTS ✓ CORE FUNCTIONAL COMPONENTS 	<ul style="list-style-type: none"> ✓ CONNECTIVITY IMPROVEMENT MATRIX ✓ DISCUSS PRACTICAL SAFETY IMPROVEMENTS
MTG #4	<ul style="list-style-type: none"> • CODE AND MARKET REQUIREMENTS • TECHNOLOGY INFLUENCES • REVIEW DRAFT DELIVERABLE 	<ul style="list-style-type: none"> • COST DISCUSSION • REVIEW DRAFT DELIVERABLE 	<ul style="list-style-type: none"> • CORE FUNCTIONAL COMPONENTS • REVIEW DRAFT DELIVERABLE 	<ul style="list-style-type: none"> • COMPARE SURVEY & MARKET STUDIES • REVIEW DRAFT DELIVERABLE 	<ul style="list-style-type: none"> • MULTI-MODAL COST MATRIX • REVIEW DRAFT DELIVERABLE 	<ul style="list-style-type: none"> • REVIEW DRAFT DELIVERABLE

POSSIBLE 5TH MEETING

JUNE 4	COMBINED WORKING GROUP PRESENTATION
JUNE 12	STEERING COMMITTEE PRESENTATION
JUNE 19	CITY COUNCIL WORKSHOP



LAND USE

- REVIEWED INFORMATION FROM THE INITIAL RFQ, PREVIOUS CITY STUDIES AS WELL AS MARKET STUDIES FOR RETAIL, OFFICE AND MULTI-FAMILY USES
- NARRATIVE DRAFT IN PROGRESS



TRAFFIC & TRANSPORTATION

- IDENTIFIED FEASIBLE TRAFFIC IMPROVEMENTS
 - **COST (COMBINED): \$1.6M**
- STUDIED POTENTIAL REALIGNMENTS
 - **COST: \$1.5 - \$2 MILLION EACH**
- REVIEWED MULTI-MODAL IMPROVEMENTS



PED SAFETY & CONNECTIVITY

- IDENTIFIED ROUTES AND INTERSECTIONS OF CONCERN
- DISCUSSED GRADE CROSSING CRITERIA AND OPTION
- ABOVE AND BELOW GRADE RAIL CROSSINGS
 - **COST: \$3-\$5M PER CROSSING**
- IMPROVE WASHINGTON CORRIDOR
 - **COST: \$1-\$1.5M**
- IMPROVE 5TH AVE CORRIDOR
 - **COST: \$1.2-\$1.7M**



DESIGN

- REVIEWED THE INITIAL RFQ, CITY DESIGN GUIDELINES AND GROUP INPUT SUMMARY
- NARRATIVE DRAFT IN PROGRESS



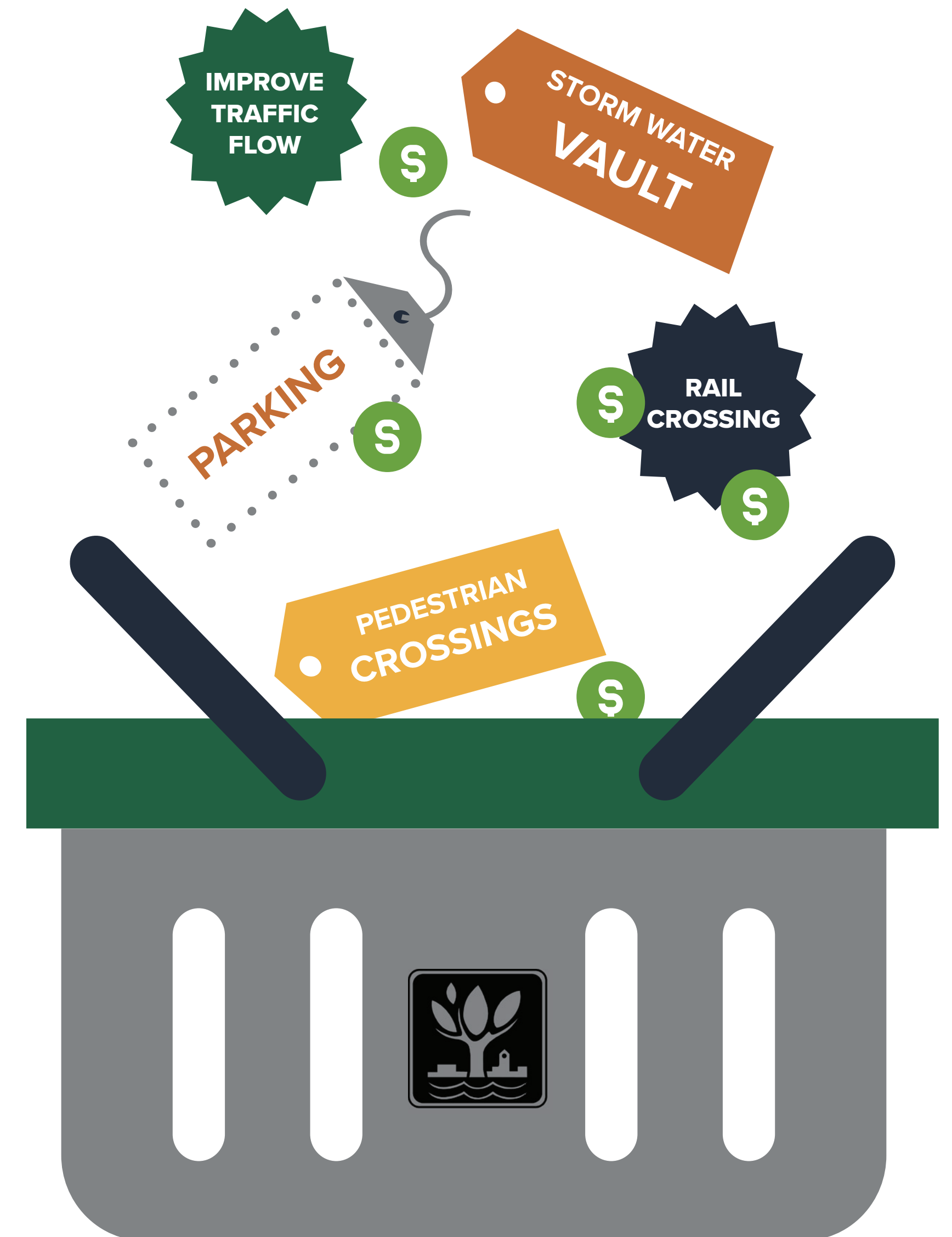
PARKING

- REVIEWED HIGH LEVEL STRUCTURE DESIGN, BEST PRACTICES AND FUTURE TRENDS
- IDENTIFIED KROEHLER, BURLINGTON AND MUSEUM/ LOTS ARE MOST EFFICIENT FOR STRUCTURE
 - **ABOVE GRADE COST: \$18K-\$24K PER SPACE**
 - **BELOW GRADE COST: \$40K PER SPACE**



STORM WATER

- INVESTIGATED LOCATIONS WITHIN AND OUTSIDE DEVELOPMENT AREA FOR FLOOD CONTROL
- IDENTIFIED BURLINGTON AND KROEHLER LOTS AS WELL AS KENDALL PARK AS FEASIBLE RETENTION SPOTS
- VAULT SYSTEM
 - **COST: \$250K PER ACRE FOOT**





WORKING GROUP MILESTONES

DESCRIPTION	MARCH	APRIL	MAY	JUNE	JULY
REQUIRED INPUT	<div>STEERING COMMITTEE SELECTED WORKING GROUP MEMBERS</div>	<div>STEERING COMMITTEE MEETING</div>	<div>ANTICIPATED LAND USE & HEIGHT SURVEY RESULTS RECEIVED</div>		
WORKING GROUPS		<div>CITY COUNCIL WORKSHOP</div>	<div>NEW - CITY COUNCIL MEETING WORKING GROUP PRODUCT UPDATE (MAY 15)</div>		
Land Use				<div>ALL WORKING GROUP PRESENTATION</div> <div>CITY COUNCIL WORKING GROUP PRODUCT 1ST DRAFT REVIEW</div>	<div>STEERING COMMITTEE PRESENTATION</div> <div>COUNCIL INPUT REVIEW AND ISSUE PRIORITIZATION</div>
Storm Water					
Pedestrian Safety/Connectivity					
Traffic and Transportation					
Parking					
Design					