

# Streetscape Types

## Downtown Streetscape Overview

The Downtown Streetscape type encompasses the Downtown's core shopping and dining area. It has been designed to meet the needs of a busy business district while reserving areas for pedestrians to sit, relax and interact. This Downtown Streetscape has been broken down into three sub-categories to reflect the varying widths of the right-of-way, provision of on-street parking, and different building setbacks. The three sub-categories are:

- Downtown - Base
- Downtown - Narrow
- Downtown - Wide

The existing right-of-way width between the back of curb and the building facade dictates which category is recommended for each streetscape area within the Downtown. The location of each of the three sub-categories is defined on the **Downtown Streetscape Types Map** below.

## Downtown Streetscape Types Map

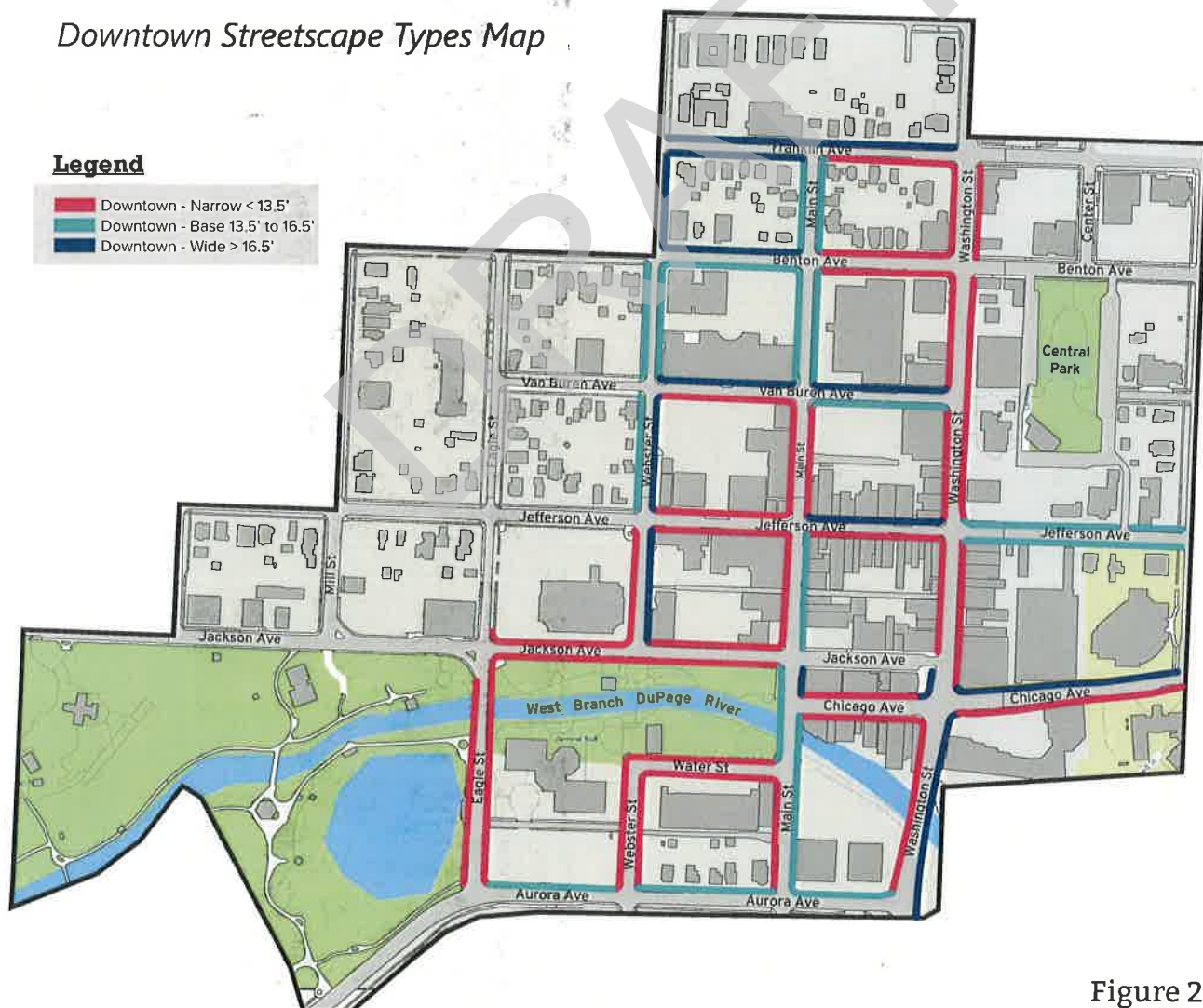


Figure 2.2



## Downtown - Base Streetscape Section

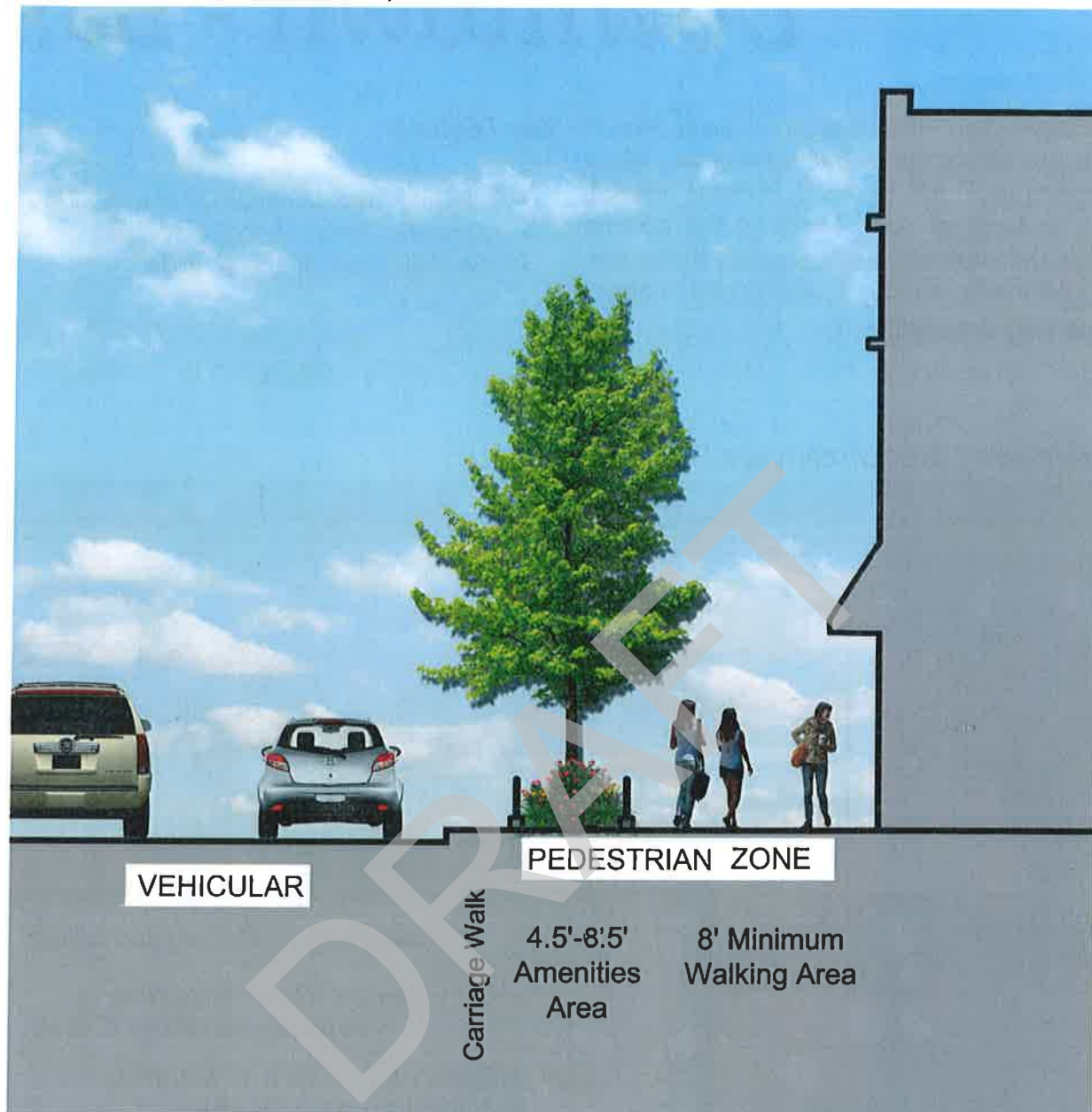
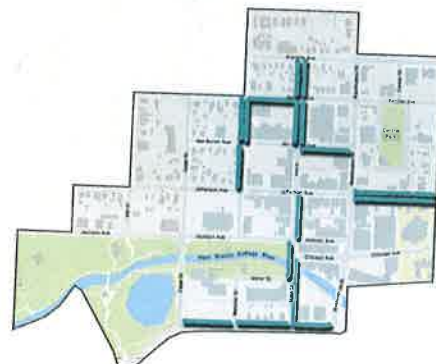


Figure 2.5

### Location Map



(See Figure 2.2 for location details)



# Downtown - Base

The Downtown - Base design will be applied in locations where the overall right-of-way width ranges from 13.5 ft. to 16.5 ft. from the building face to back of curb. Many of the existing street and sidewalk widths support these base improvements without requiring any changes to parking or curb layout.

## Key Features

- *Walking Area*: Minimum of 8-feet wide
- *Amenities Area*: 4.5 to 8 feet wide
- *Carriage Walk*: 16 inches wide

## Downtown - Base Streetscape Plan View

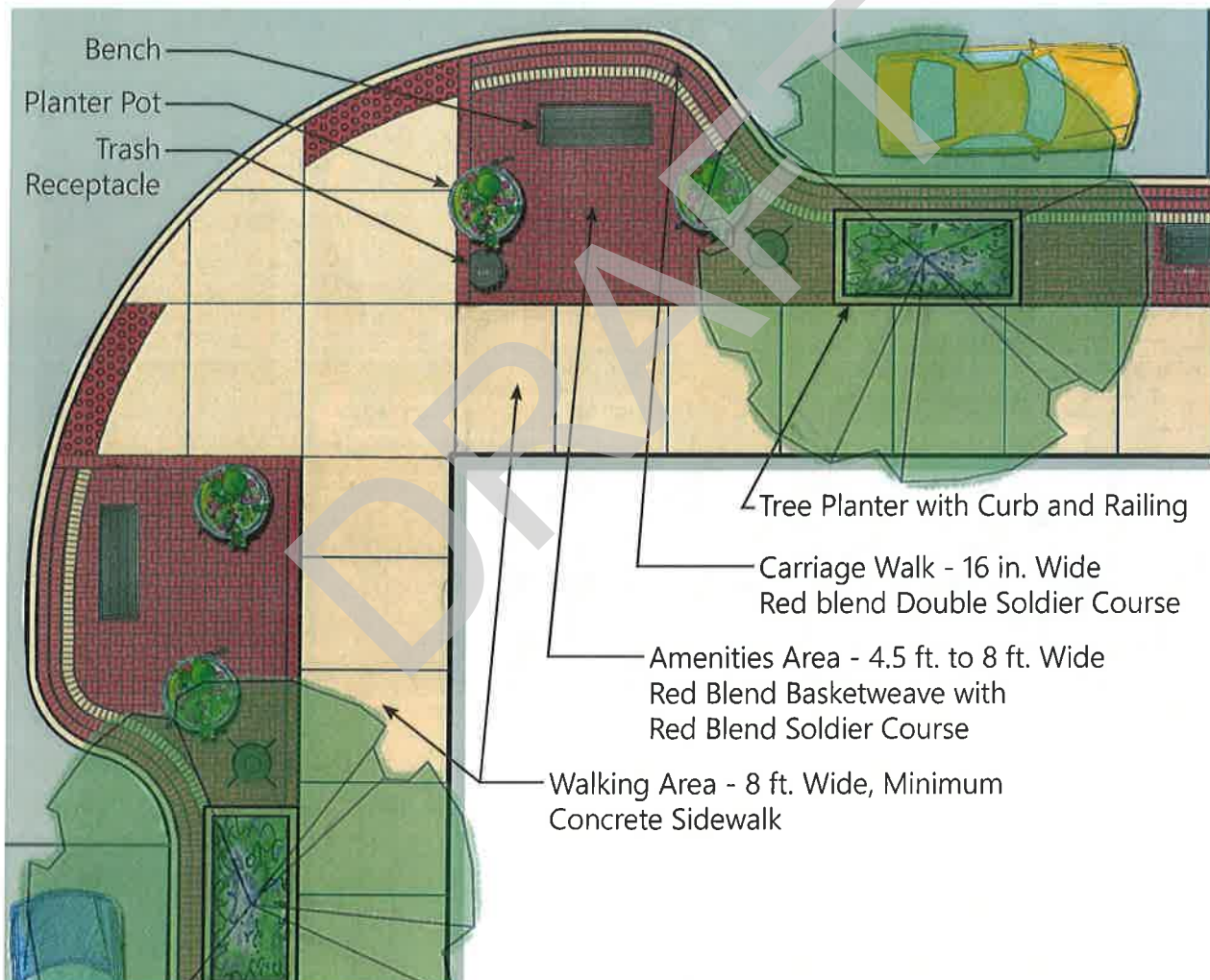


Figure 2.6

## Downtown - Narrow Streetscape Section

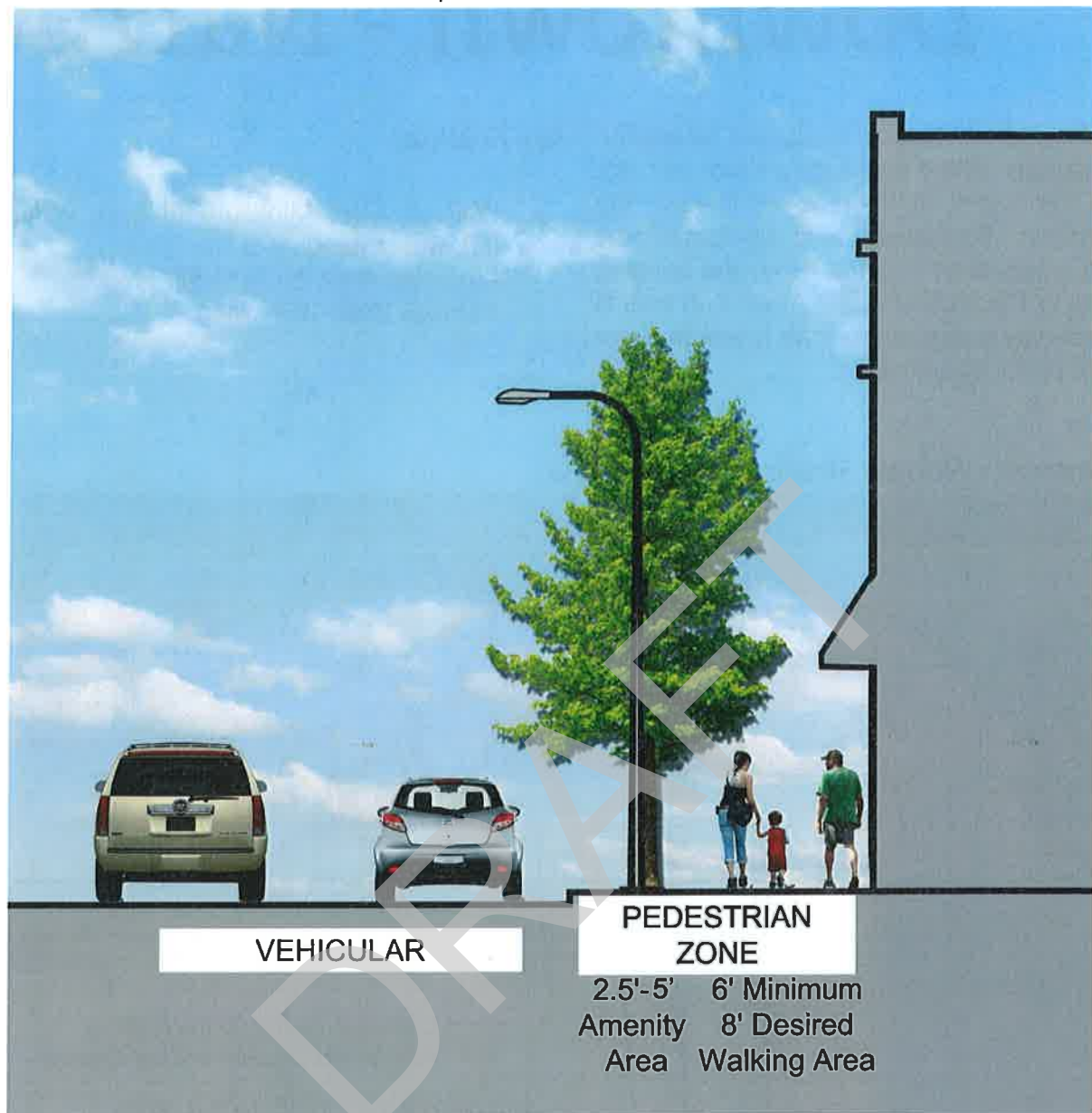
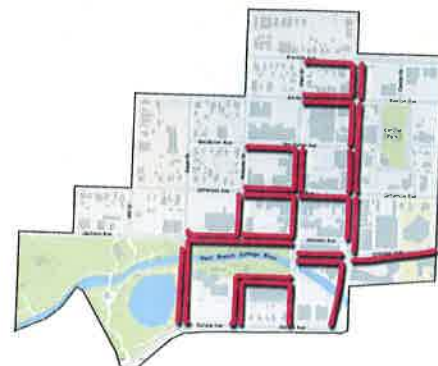


Figure 2.7

### Location Map



(See Figure 2.2 for location details)

# Downtown - Narrow

The Downtown - Narrow design will be applied in locations where the right-of-way will not meet the overall widths required to meet the Downtown - Base design, and the right-of-way width is less than 13.5 feet from the building façade to the back of curb. Areas with overall right-of-way widths of less than 11 feet shall not have a paver amenity area.

## Key Features

- *Walking Area*: Minimum of 6 ft. wide; 8 ft. where possible
- *Amenities Area*: 2.5 ft. to 5 ft. wide
- *Carriage Walk*: 16 in. wide

## Downtown - Narrow Streetscape Plan View

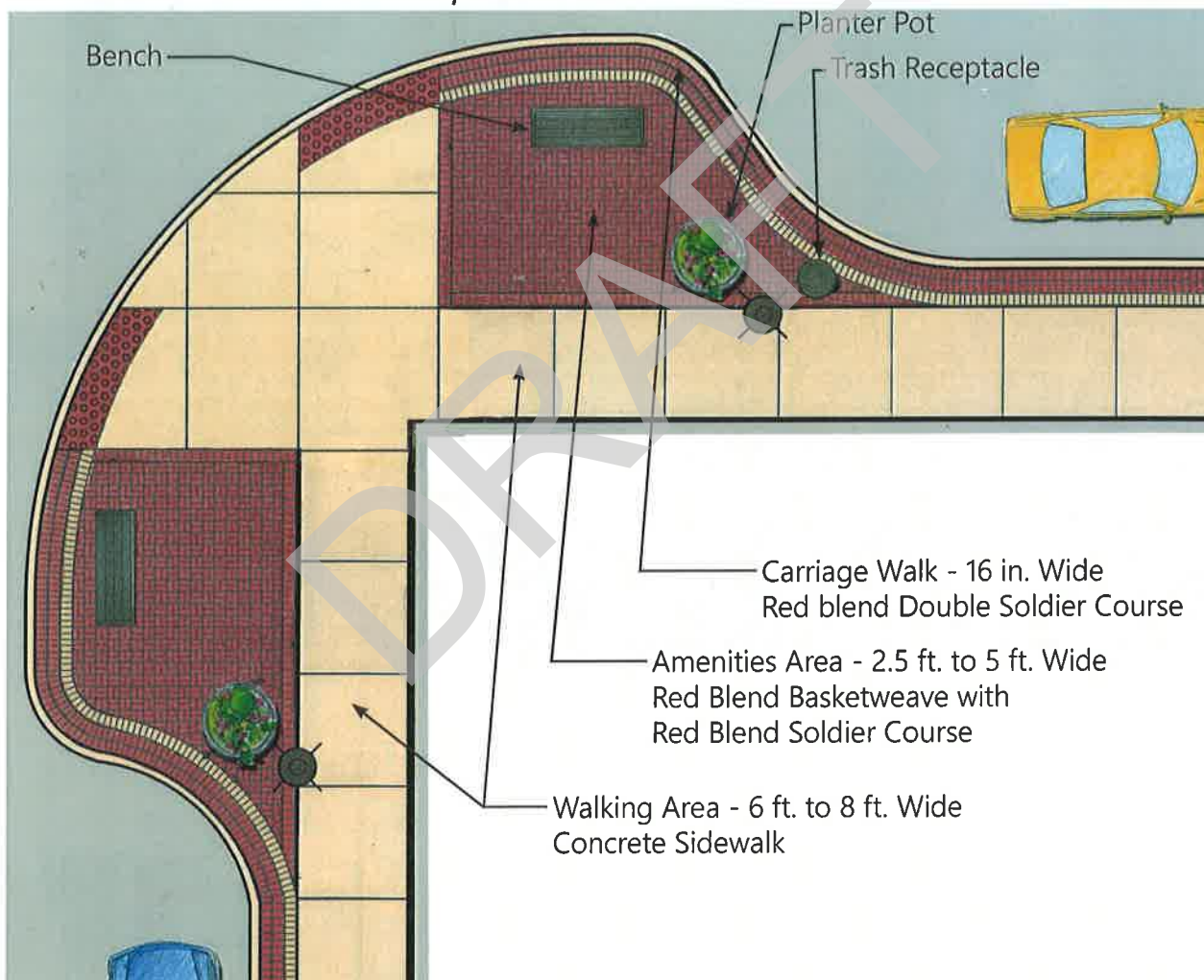


Figure 2.8



## Downtown - Wide Streetscape Section

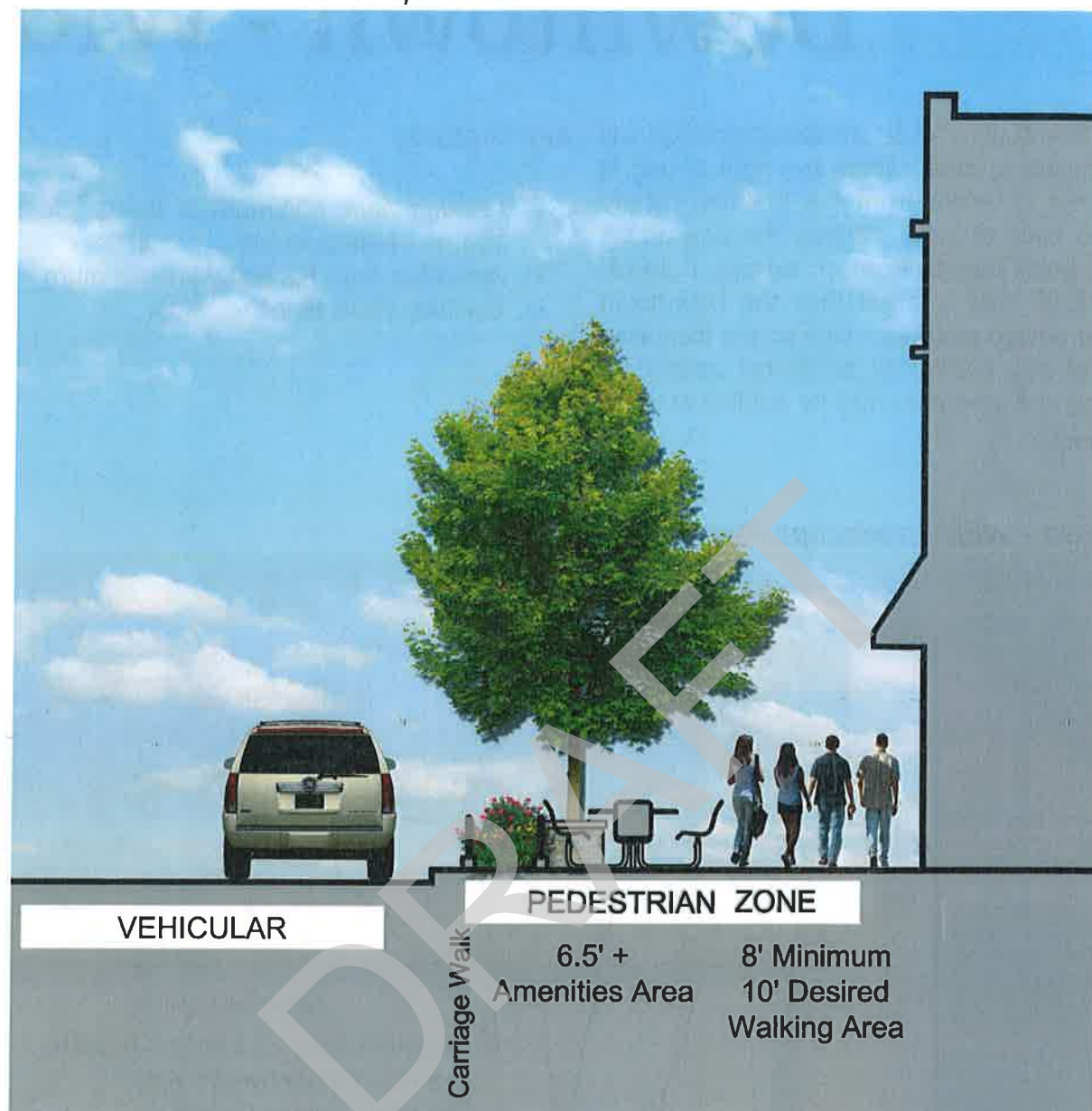


Figure 2.9

### Location Map



(See Figure 2.2 for location details)

# Downtown - Wide

The Downtown - Wide streetscape design will be applied to areas where the right-of-way is 16.5 feet or wider from the building façade to the back of curb. Within the downtown, some areas benefit from an existing right-of-way width that is larger than the Downtown - Base design assumes. Due to the increased right-of-way availability additional pedestrian seating and amenities may be applied at these locations.

## Key Features

- *Walking Area:* Minimum of 8-feet wide; 10-feet where possible
- *Amenities Area:* 6.5 feet wide minimum
- *Carriage Walk:* 16 inches wide



Intro



Streetscape



Base



Narrow



Wide



Flexible



Alleys



Appendix

## Downtown - Wide Streetscape Plan View

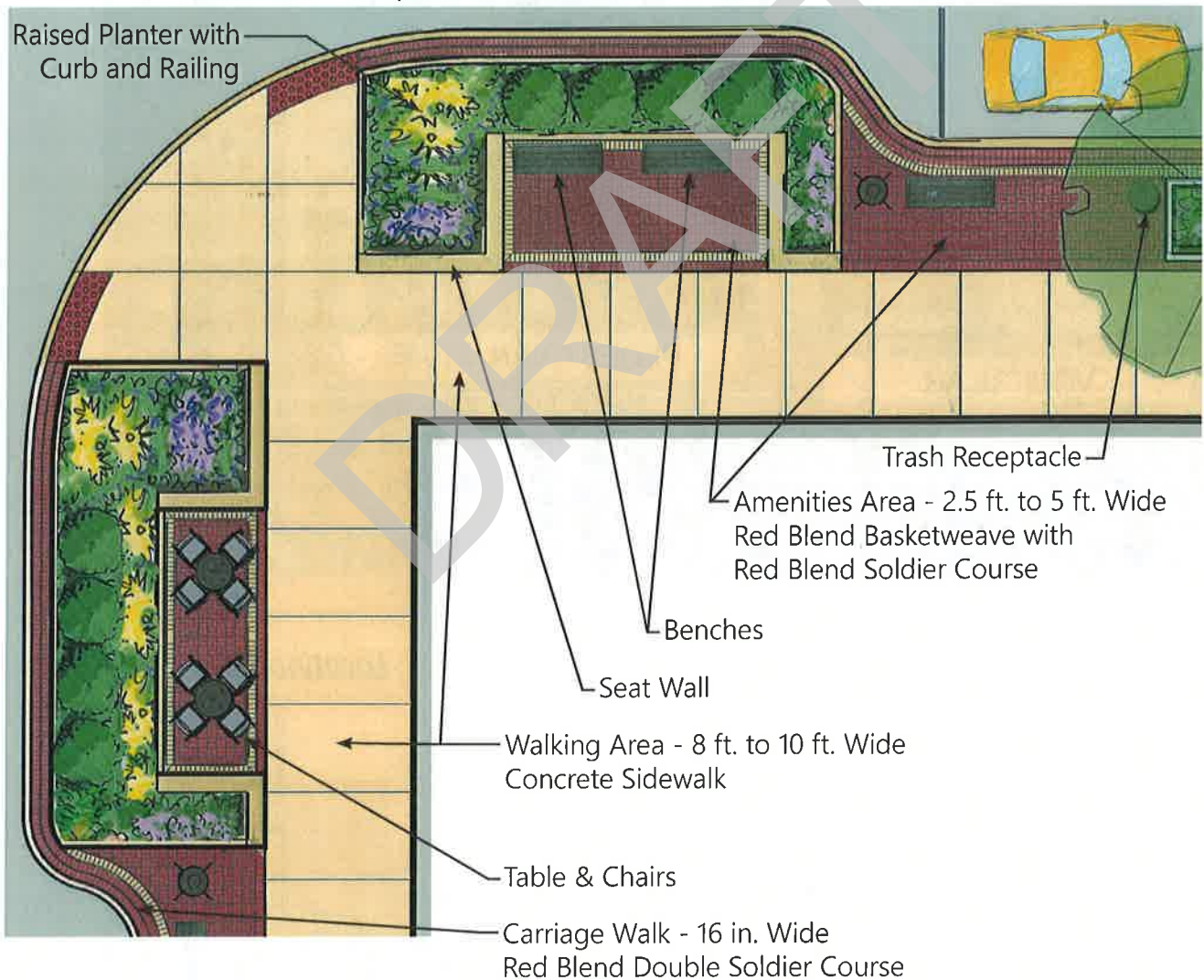


Figure 2.10