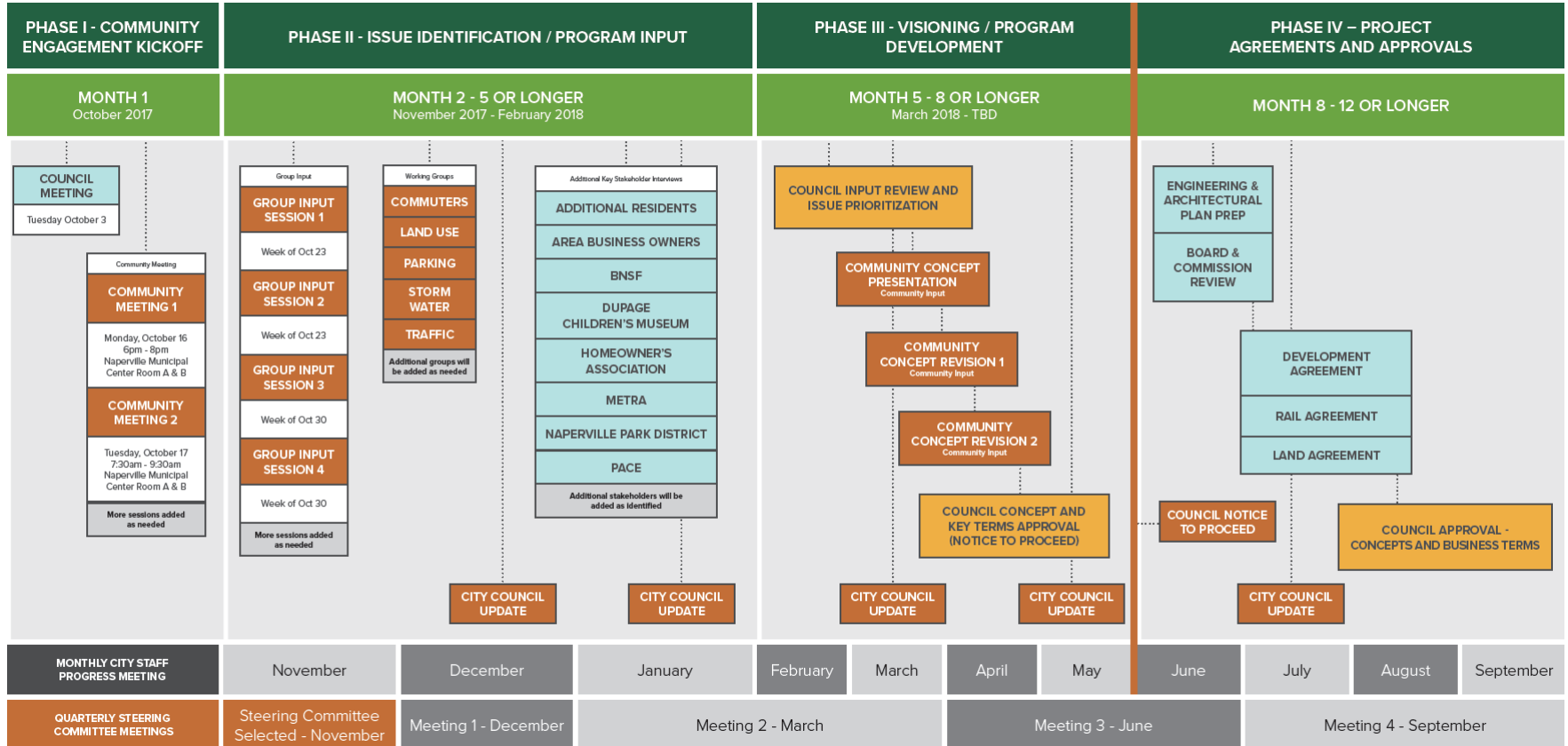






Ryan's Perspective

- The community wants to be engaged!
- There is excitement about the potential and concerns regarding the “what-ifs”.
- Folks are eager to get into the working groups and concept phase.





COMMUNITY ENGAGEMENT SINCE OCT 3 COUNCIL MEETING

OUTREACH

254
ENEWSLETTERS
SENT



9
SIGNS
NEAR
THE
TRAIN
STATION

2,178
POSTCARDS SENT

2 COMMUNITY
SPONSORSHIPS

40,000
UTILITY BILL
INSERTS
(January)

1,708
WEBSITE
VISITORS

CITY
SOCIAL
MEDIA



INPUT OPPORTUNITIES

11
GROUP
MEETINGS



16
1:1 MEETINGS


331
EMAILS
RECEIVED AND
RESPONDED TO

550
SURVEY
RESPONSES

CITY SOCIAL
MEDIA




2
City Staff
Meetings




[Home](#)
[Community Input](#)
[Project Information](#)
[Project Updates](#)
[Events](#)
[Contact](#)

5th Avenue Development – Be a Part of the Process

Located adjacent to the bustling Naperville train station, the 5th Avenue Development consists of eight (8) City-owned parcels on just over 13 acres. We are asking for your input on what improvements could be made to positively impact the lives of those who live, work and explore this

Join the Steering Committee

Steering Committee will serve as both communicators, sharing residents' concerns with Ryan then sharing progress back and as an advisory group.

[Read More](#)

Take A Survey

Take a brief survey to help us better understand the wants and needs of this community. If you wish to have a printed copy of the survey sent to you please email 5thavedev@ryancompanies.com

[Start Survey](#)

Participate in Working Groups

Working Groups are tasked with completing more in-depth analysis of topics raised by the community during the Input Sessions.

[Read More](#)

ADDITIONAL INFORMATION

- Community Input
- Project Information
- Project Updates
- Events
- About Ryan
- Contact

SUBSCRIBE TO OUR eNEWSLETTER

[Subscribe](#)

FIFTHAVENUEDEVELOPMENT.COM

To be used as a platform for Ryan to keep residents up to date on the project, share upcoming events and discover the many ways to stay engaged throughout the process.

- Sign up for the enewsletter
- Take a survey
- View/join upcoming events
- Review project information and updates

SURVEY CONTENT

26
Questions

77%
Completion
Rate

SURVEYS
COMPLETED*
550

INITIAL SURVEY INTENT

AN OPPORTUNITY TO PROVIDE INPUT FOR THOSE WHO
COULD NOT ATTEND A COMMUNITY MEETING

COLLECT INPUT ON SPECIFIC
ELEMENTS OF THE DEVELOPMENT

BEGIN TO FRAME THE KEY ISSUES AT HAND
ADDITIONAL SURVEY(S) WILL FOLLOW

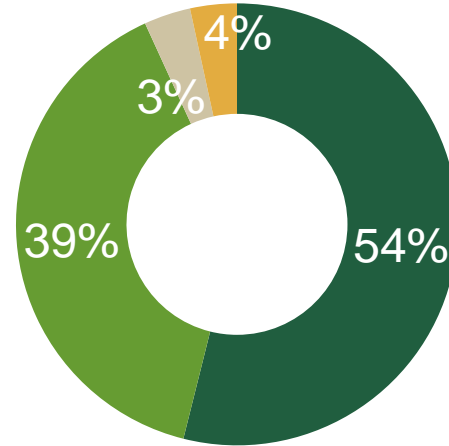
SURVEY RESULTS TO DATE*

“RANK YOUR PRIORITIES FOR THE AREA”



1. TRAFFIC
2. PARKING
3. COMMUTER
EXPERIENCE
4. DESIGN
5. PED/BICYCLE
AMENITIES
6. GREENSPACE
7. FLOOD WATER
8. ENVIRONMENT
9. NOISE

“TELL US A LITTLE BIT ABOUT YOURSELF”



- Naperville Resident
- Commuter & Naperville Resident
- Commuter Only
- Other

*Questions taken directly from the survey.

COMMUNITY OPEN HOUSE HELD OCT 16 & 17

COMMUNITY MEETING RECAP

- Community notified via city newsletters, social media and electronic road signs
- Attendees registered with option to provide written comments
- The Open House format consisted of three stations:
 - The Engagement Process
 - The Ryan Team
 - We Need Your Input

199
PEOPLE ATTENDED THE
COMMUNITY ENGAGEMENT
MEETINGS



10

REPRESENTATIVES
FROM RYAN COMPANIES

14

REPRESENTATIVES
FROM THE CITY

401

COMMENTS COLLECTED

19

TOPICS IDENTIFIED

COMMUNITY OPEN HOUSE HELD OCT 16 & 17

KEY AREAS OF INTEREST

TRAFFIC/PEDESTRIAN SAFETY

LAND USE

PARKING

DESIGN

STORM WATER



"I can't close without letting you know how favorably impressed we are with the obvious total receptiveness to community input."

"I remain very disappointed in how well you are 'listening' to the community. The Open House the other day was completely structureless."



KEY TAKEAWAYS

IDENTIFIED AREAS OF INTEREST TO PROVIDE THE BASIS FOR THE INPUT SESSIONS

CREATED AN OPEN DIALOG BETWEEN RYAN AND THE COMMUNITY

THE COMMUNITY HAS A VARIETY OF WANTS AND CONCERNS FOR THIS DEVELOPMENT



GROUP INPUT SESSIONS

INPUT MEETING RECAP

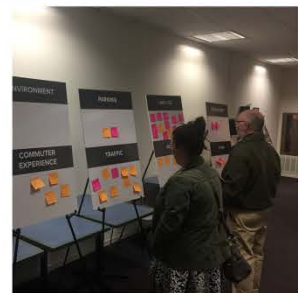
- Attendees registered upon arrival and identified their top two priorities
- Two hours of open dialog with detailed notes taken
- Notes were distributed to attendees for review/input then posted on the development website.

9 GROUP INPUT SESSIONS

169

RESIDENTS,
COMMUTERS AND
BUSINESS OWNERS
ATTENDED AN
INPUT SESSION

“Seems by this summary that Ryan wishes to mold the summary from the input session to fit their perconceived notion of what should be developed on the land rather than listen to the residents.”



“I want to thank Ryan Companies as a whole for establishing a very open, freindly, respectful forum in which people could express their points of view freely and honestly.”

Oct 26	Oct 27	Nov 1	Nov 3	Nov 8	Nov 9	Nov 15	Nov 18	Nov 21
23	20	20	18	19	25	25	13	6

GROUP INPUT SESSIONS

KEY AREAS OF INTEREST

PARKING • TRAFFIC • LAND USE • GREENSPACE • PEDESTRIAN/BICYCLE ROUTE • COMMUTER EXPERIENCE • ENVIRONMENT • DESIGN • STORM WATER

MOST TALKED ABOUT AREAS OF INTEREST



LAND USE



TRAFFIC/PEDESTRIAN SAFETY

KEY TAKEAWAYS

TRAFFIC IS A KEY CONCERN AS IT EFFECTS BOTH COMMUTERS AND PEDESTRIANS

THE MAJORITY OF THE DISCUSSION TIME WAS SPENT ON THE NEEDS/ DESIRES TO IMPROVE THE AREA

GROUP DEMOGRAPHICS VARIED GREATLY CREATING A WELL- ROUNDED DISCUSSION



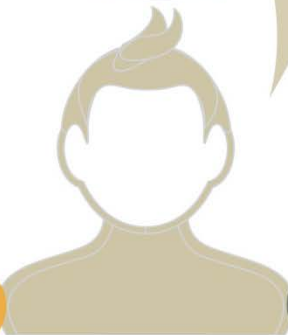
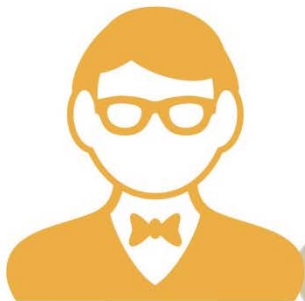
“Increase greenspace for both reflective & recreation use.”

“There are no unmet needs.”

“Wide variety of uses needed: office, gym, grocer, daycare. Provide uses that meet the needs of the neighborhood.”

“Office space would encourage a reverse commute.”

“More neighborhood retail options: grocer, restaurant, wine shop, and a coffee shop.”





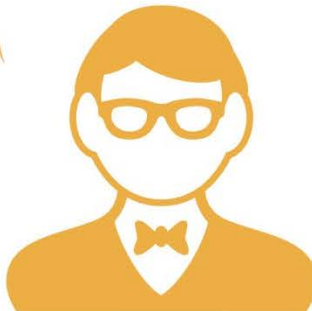
“Everyone is in such a hurry - it’s a dangerous place to be a pedestrian.”

“Add bike lanes and secure bike parking.”

“Add smarter pedestrian crossings to improve safety.”

“Add pedestrian bridge over the tracks.”

“Speed and traffic routes are more of a concern than congestion during rush hour.”



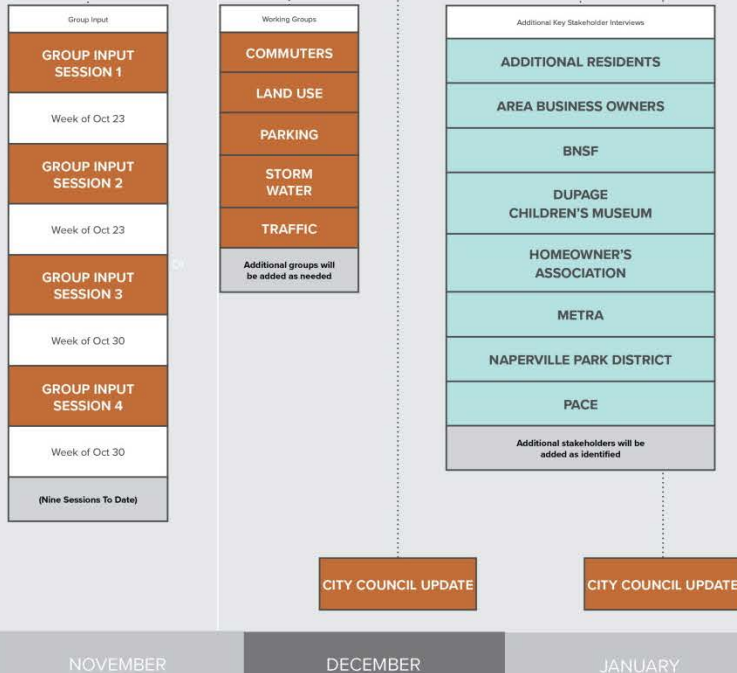


Why the Group Input Process?



PHASE II - ISSUE IDENTIFICATION / PROGRAM INPUT

MONTH 2 - 5 OR LONGER
November 2017 - February 2018



NEXT STEPS

- Stakeholder meetings ramp up (January)
- Steering Committee finalized (January)
 - Applications are due 12/22
 - Commuter selection meeting 1/9
 - Pilgrim Add. selection meeting 1/15
 - Park Add. selection meeting 1/17
 - WHOA, ECHO and NAHC Boards will select members
 - Senior Task Force has selected its member
 - Additional Steering Committee members include:
 - Councilwomen Obarski & Brodhead
 - Marcie Schatz & Allison Laff from city staff
 - 2 Ryan representatives
 - Mayor Emeritus Pradel
- Establish Working Groups (February)
- Land use and height survey issued

Goal by March 2018:

- Council input review and issue prioritization
- Begin concept development

