

Patel Brothers Pylon/Sign Re-Face

1568 W. Ogden St.

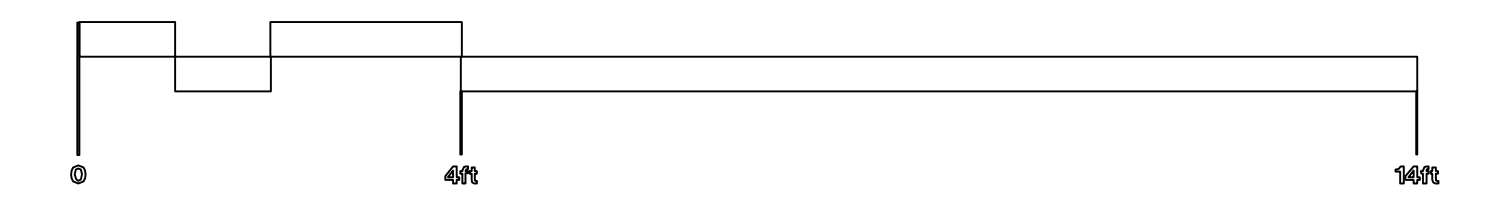
- Aluminum Frame
- Flexible Face/ Translucent Vinyl Graphics
- 2 Circuit 20 amp each

SIGNMAX

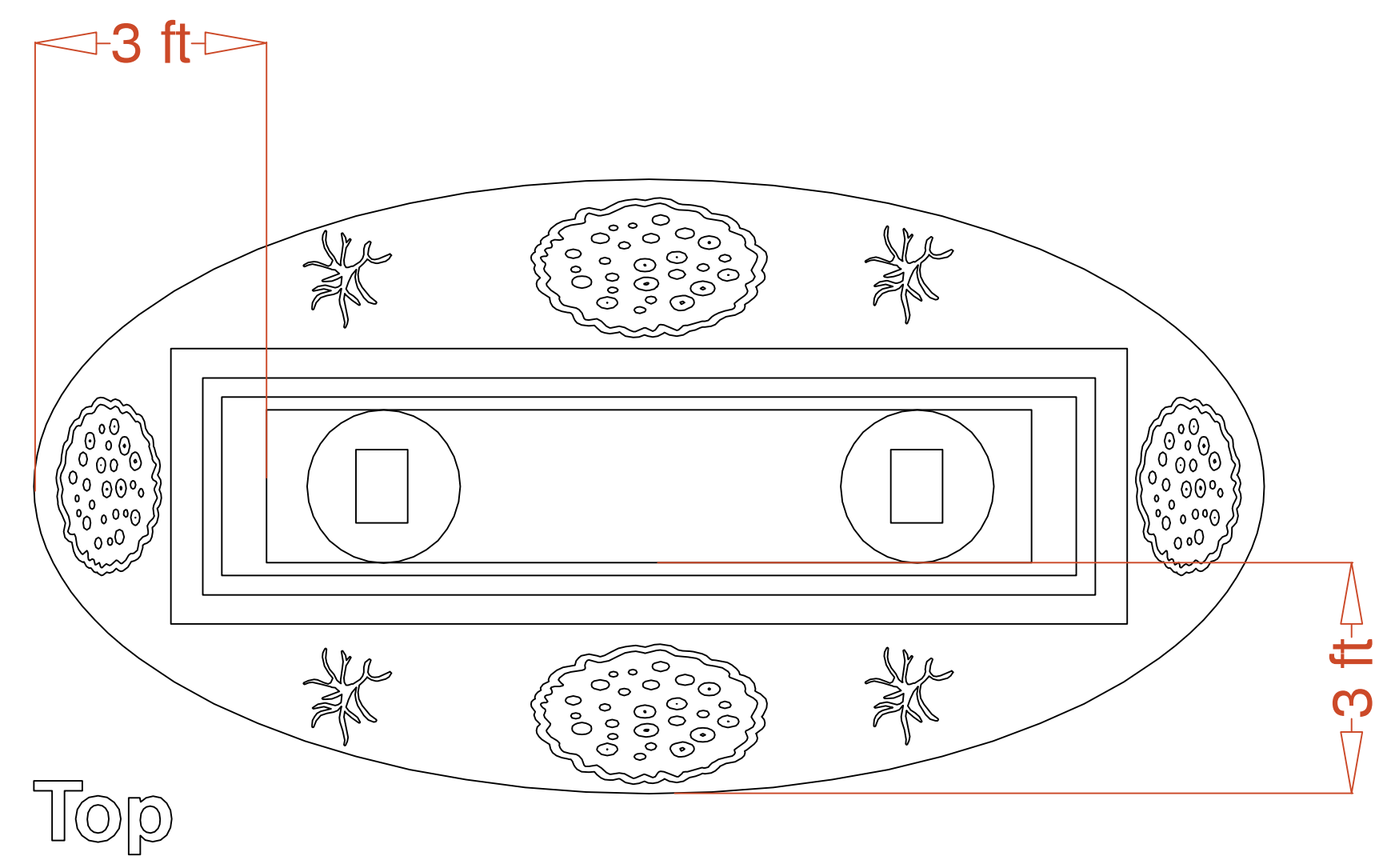
MANUFACTURING • SERVICE • INSTALLATION

1018 Lunt Ave. Schaumburg, IL. 60193
 Ph: 847-534-7135 Fax: 847-534-5594
 Cell: 847-343-0651

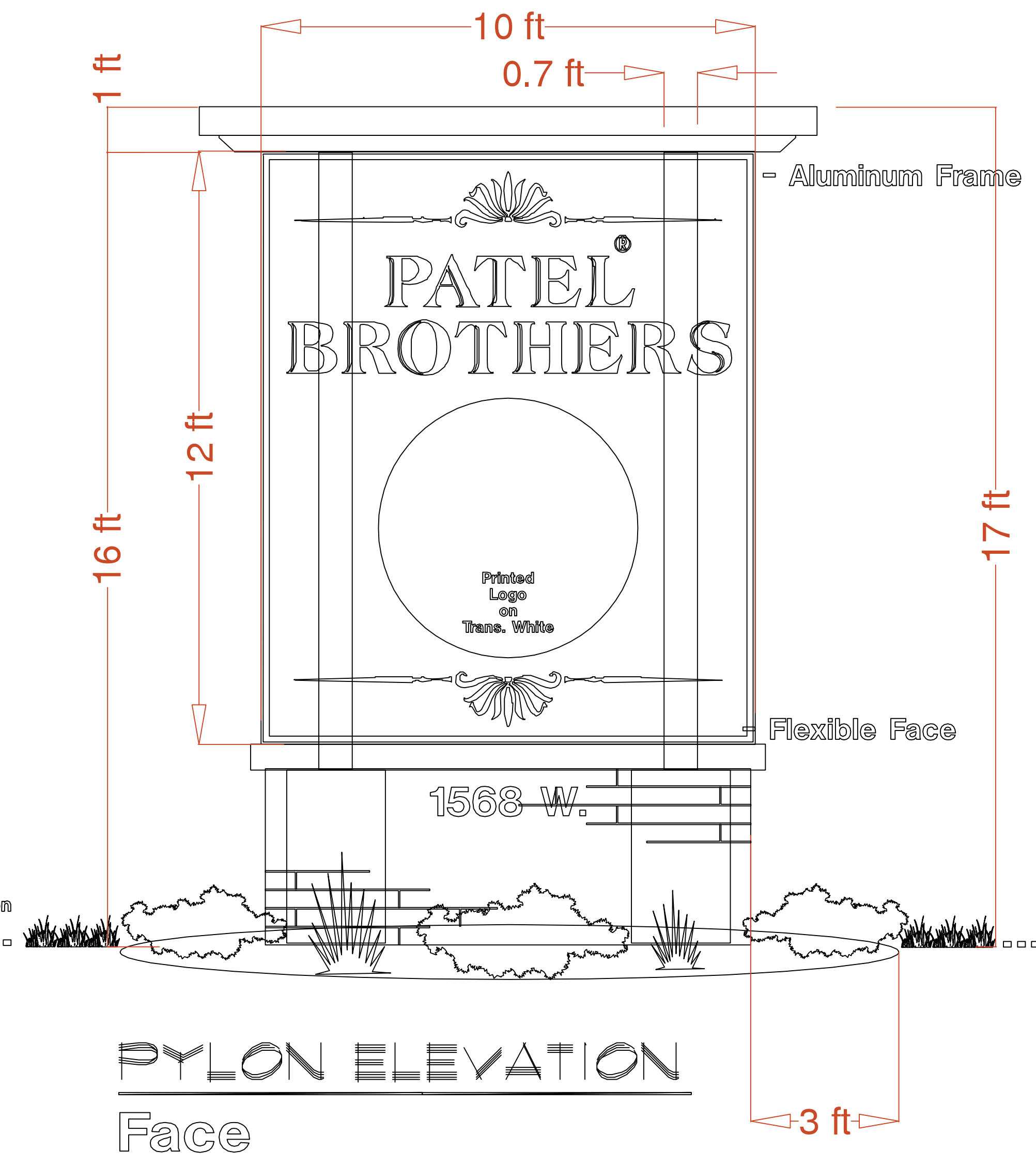
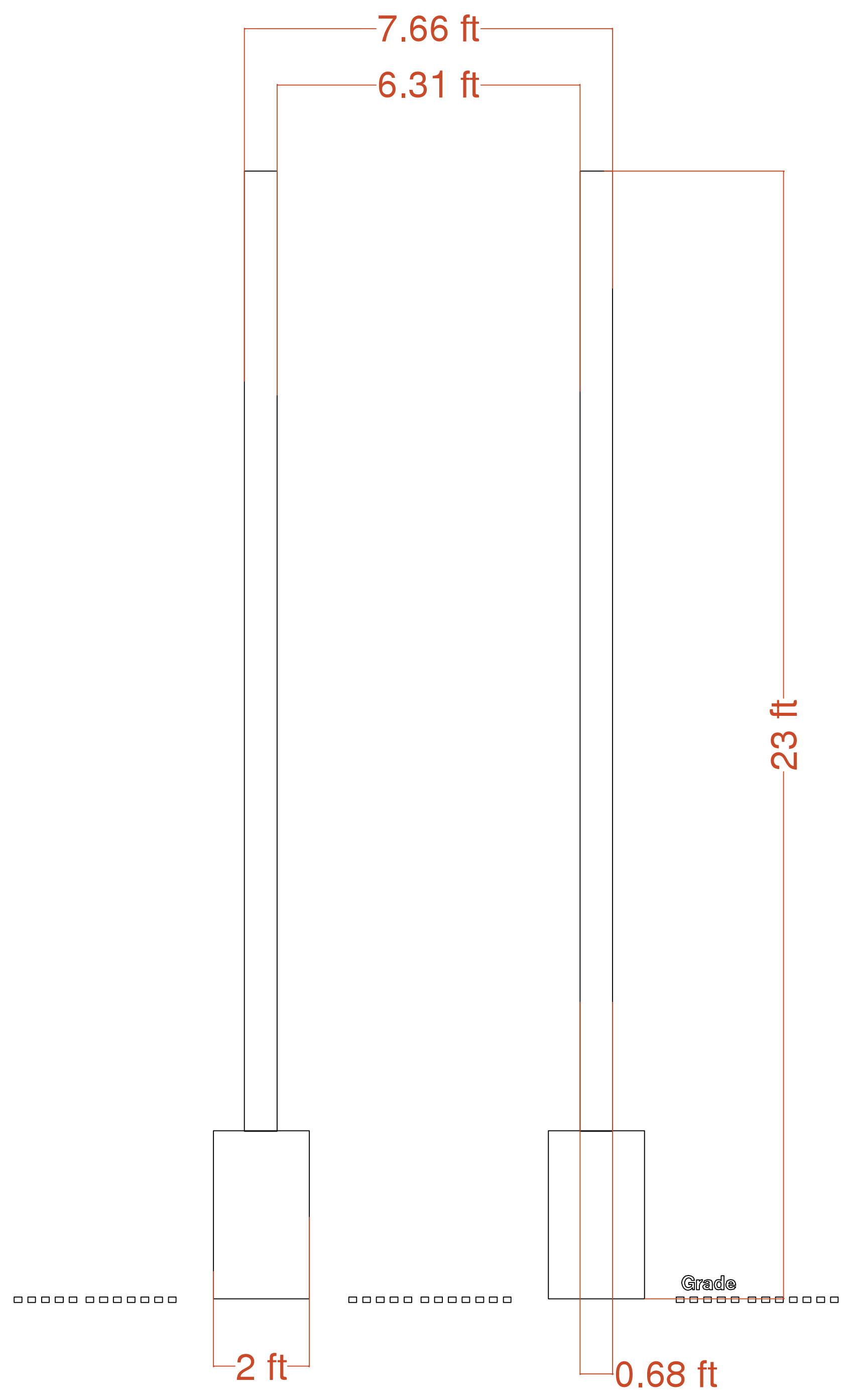
Info@thesignmax.com www.thesignmax.com



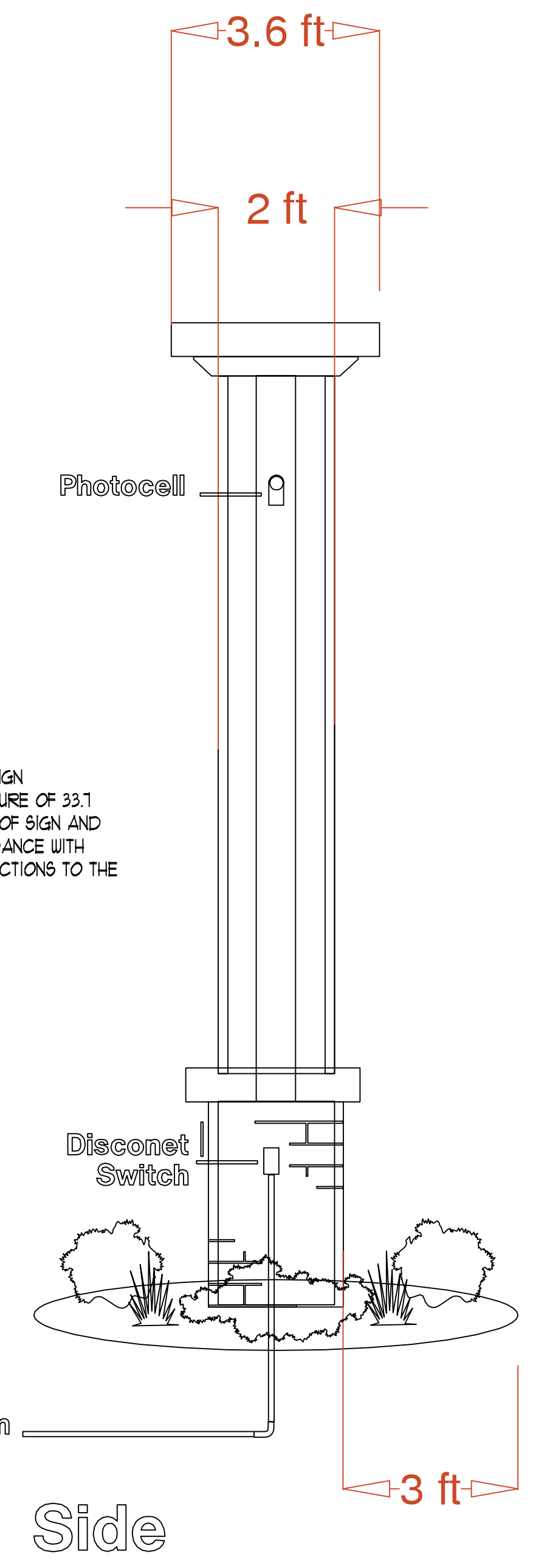
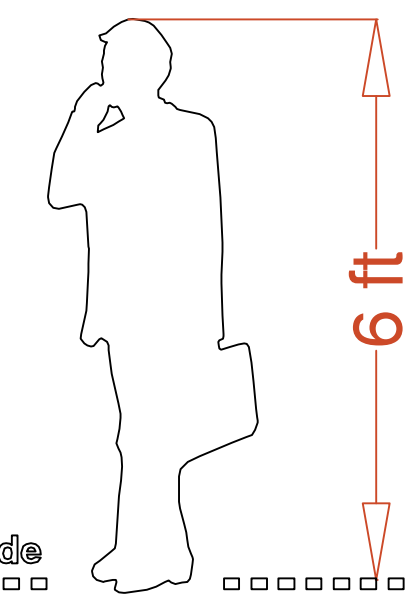
SCALE: 1" = 2'



****Revised Height**



NOTE:
 SIGN MANUFACTURE MUST DESIGN THE SIGN
 FACE TO RESIST AT TOTAL WIND PRESSURE OF 33.1
 LB/FT (INCLUDES PRESSURE ON FACE OF SIGN AND
 SUCTION ON BACK OF SIGN) IN ACCORDANCE WITH
 ASCE A1-10. PROVIDE POSITIVE CONNECTIONS TO THE
 STEEL TUBE FRAME.



Street Elevation (637)

Signage Elevation (630)

Grade