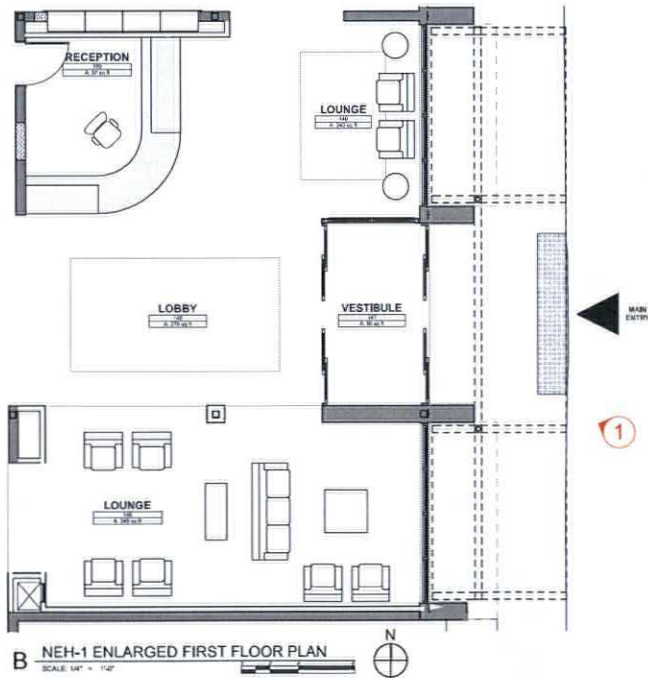


A ENTRY CANOPY
SCALE: 1/4" = 1'-0"

2



B NEH-1 ENLARGED FIRST FLOOR PLAN
SCALE: 1/4" = 1'-0"



1 CANOPY VIEW 1



2 CANOPY VIEW 2

DRAFT-NOT FOR CONSTRUCTION

Naperville Elderly Homes
310 W Martin Avenue
Naperville, IL 60540

Naperville Elderly Homes

310 W Martin Avenue
Naperville, IL 60540
10/22/18

© 2018 WORN JERABEK WILTSE ARCHITECTS, P.C.
WORN JERABEK WILTSE ARCHITECTS, P.C.
401 West Superior St, Suite 400
Chicago, IL 60654

NEH-1 Entry Canopy Cost Analysis

CSI Description

03 Concrete		
1. New expanded sidewalk		\$1,200
2. Concrete column footings including excavation and disposal		\$5,400
<hr/>		
05 Metals		
1. Ornamental steel framing, powder coat finish - Material		\$22,080
2. Installation of steel framing and standing seam polycarbonate roof system		\$37,620
<hr/>		
07 Thermal and Moisture Protection		
1. Standing seam polycarbonate roof system - Material only (installation cost included with steel framing above)		\$18,100
2. New TPO membrane roofing including tapered insulation at existing canopy		\$2,600
3. Metal rake flashing		\$1,400
4. Integral gutter and downspout tie-in to the existing roof edge		\$1,000
<hr/>		
15 Plumbing		
1. Underground gutter drain connection		\$6,500
Total Increases		\$95,900

Entry Canopy Sketches:

- SK-1 dated Sept. 27, 2018
- SK-2 dated Sept. 27, 2018
- SK-5.0 dated Sept 13, 2018
- SK-5.1 dated Sept 13, 2018