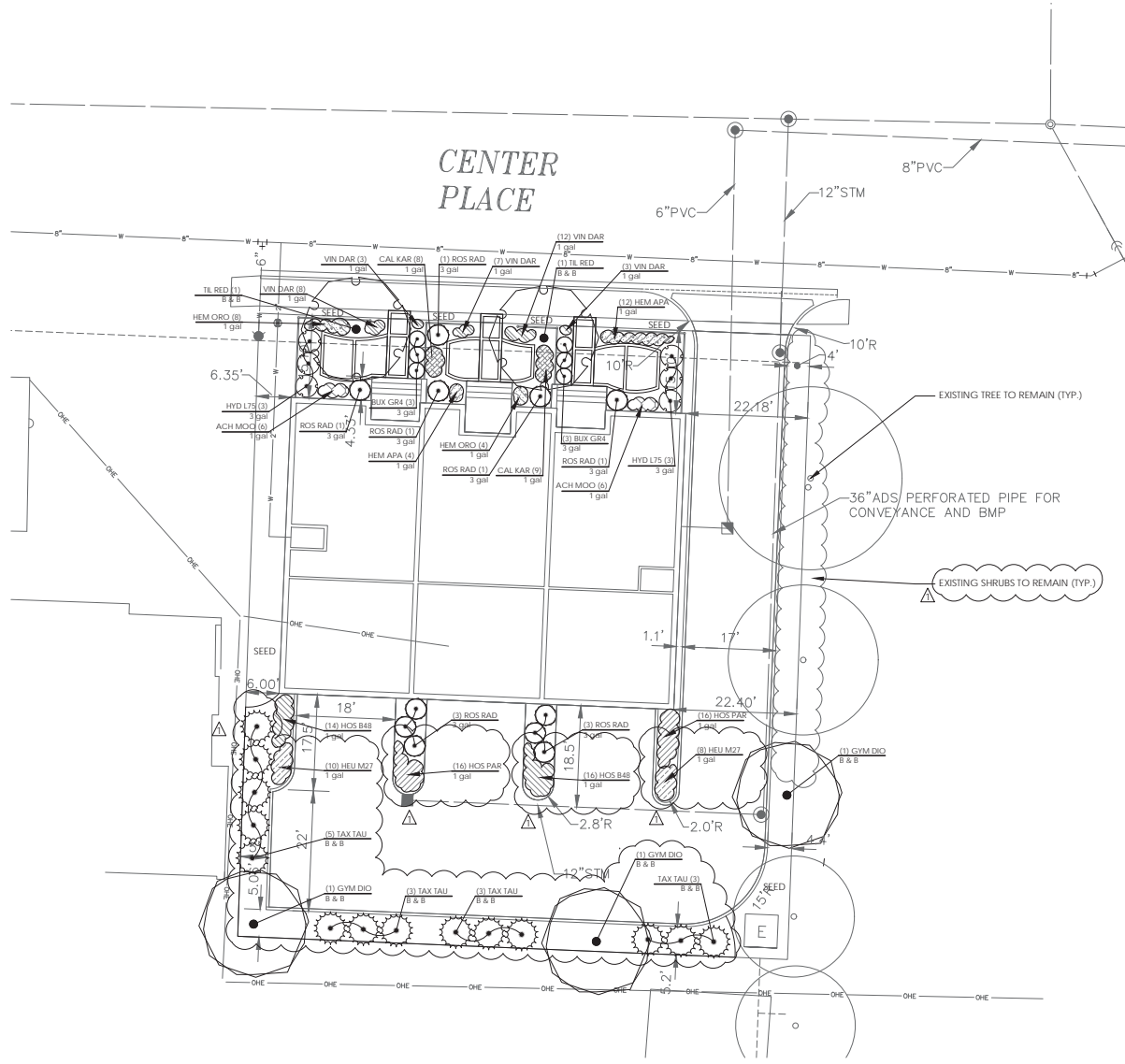


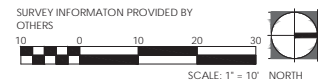
PLANT SCHEDULE

TREES	BOTANICAL NAME / COMMON NAME	CONI	CAL	QTY
GYM DIO	Gymnocladus dioica 'Espresso' / Kentucky Coffeetree	B & B	2.5'Cal	3 Δ
TL RED	Tilia americana 'Redmond' / Redmond American Linden	B & B	2.5'Cal	2
SHRUBS	BOTANICAL NAME / COMMON NAME	SIZE	FIELD2	QTY
BUX GR4	Buxus x 'Green Mountain' / Boxwood	B & B		6
HYD L75	Hydrangea paniculata 'Little Quick Fire' / Little Quick Fire Hydrangea	3 gal		6
ROS RAD	Rosa x 'Knockout' TM / Rose	3 gal		11
TAX TAU	Taxus x Media 'Tautoni' / Tauton Yew	B & B		14
GROUND COVERS	BOTANICAL NAME / COMMON NAME	CONI	SPACING ON	QTY
ACH MOO	Achillea x 'Moonshine' / Moonshine Yarrow	1 gal	18" o.c.	12
CAL KAR	Calamagrostis x acutiflora 'Karl Foerster' / Feather Reed Grass	1 gal	18" o.c.	17
HEM APA	Hemerocallis x 'Chicago Apache' / Daylily	1 gal	18" o.c.	16
HEM ORO	Hemerocallis x 'Stella de Oro' / Stella de Oro Daylily	1 gal	18" o.c.	12
HEU M27	Heuchera x 'Miracle' / Coral Bells	1 gal	18" o.c.	18
HOS B48	Hosta sieboldiana 'Blue Angel' / Plantain Lily	1 gal	18" o.c.	30
HOS PAR	Hosta x 'Paradigm' / Plantain Lily	1 gal	18" o.c.	32
VN DAR	Vinca minor 'Dart's Blue' / Dart's Blue Periwinkle	1 gal	12" o.c.	33
SEED	Bluegrass, Rye and Fescue Blend with Blanket			700 SF Δ



PLANT TYPE	REQUIREMENTS:	QTY
FOUNDATION PLANTING:	1 PER 3 LINEAR FEET	
DECIDUOUS SHRUB	72 LINEAR FEET	24
PERENNIAL		6
		20
TOTAL:		26 PLANTS

NOTE: SEED ALL AREAS DISTURBED DURING CONSTRUCTION



COURT PLACE TOWNHOMES



1280 Iroquois Avenue
 Suite 110
 Naperville, Illinois 60563
 Telephone: (630) 428-3134
 Fax: (630) 428-3159
 www.design-perspectives.net

REV.	COMMENT	DATE
1	PER CITY REVIEW	3/30/17



DATE: 2-23-2017
 JOB NO.: 17-3281
 DRAWN BY: CJW
 CHECKED BY: TS

DRAWING TITLE:
LANDSCAPE PLAN
 SHEET NO.:
LP-100