



SHEET LIST	
L1.00	TITLE SHEET
L1.01	DIMENSIONED SITE PLAN
L1.02	TREE SURVEY - AREA ONE
L1.03	TREE SURVEY - AREA TWO
L1.04	TREE SURVEY LIST
L2.00	FOUNDATION LANDSCAPE PLAN SHEET KEY
L2.01	FOUNDATION LANDSCAPE PLAN - AREA ONE
L2.02	FOUNDATION LANDSCAPE PLAN - AREA TWO
L2.03	FOUNDATION LANDSCAPE PLAN - AREA THREE
L2.04	FOUNDATION LANDSCAPE PLAN - AREA FOUR
L2.05	FOUNDATION LANDSCAPE PLAN - AREA FIVE
L2.06	COMMON AREA LANDSCAPE PLAN - AREA ONE
L2.07	COMMON AREA LANDSCAPE PLAN - AREA TWO
L2.08	HARDSCAPE DETAILS
L2.09	HARDSCAPE DETAILS
L2.10	COMMON AREA LANDSCAPE PLAN, DETAILS AND SPECS

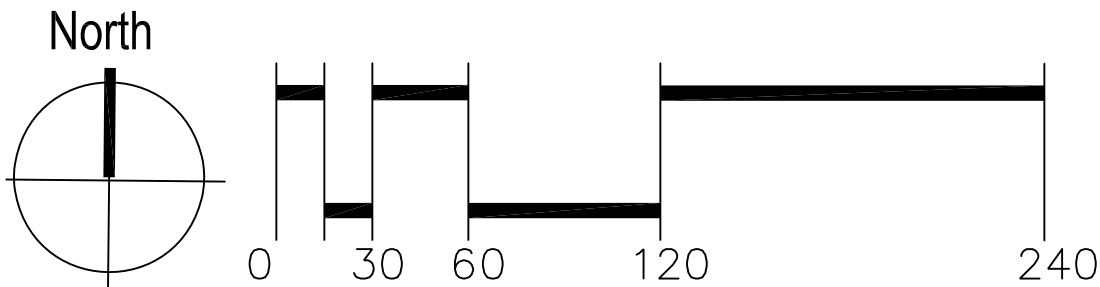


EXHIBIT C

ISSUE DATE: 07-27-2025	
REVISIONS	
02/25/2025	1 City Comments
04/10/2025	2 City Comments
07/23/2025	3 City Comments
07/23/2025	4 City Comments
07/23/2025	5 City Comments
07/23/2025	6 City Comments
07/23/2025	7 City Comments
07/23/2025	8 City Comments
07/23/2025	9 City Comments
07/23/2025	10 City Comments
07/23/2025	11 City Comments
07/23/2025	12 City Comments
07/23/2025	13 City Comments
07/23/2025	14 City Comments
07/23/2025	15 City Comments
07/23/2025	16 City Comments
07/23/2025	17 City Comments
07/23/2025	18 City Comments
07/23/2025	19 City Comments
07/23/2025	20 City Comments
07/23/2025	21 City Comments
07/23/2025	22 City Comments
07/23/2025	23 City Comments
07/23/2025	24 City Comments
07/23/2025	25 City Comments
07/23/2025	26 City Comments
07/23/2025	27 City Comments
07/23/2025	28 City Comments
07/23/2025	29 City Comments
07/23/2025	30 City Comments
07/23/2025	31 City Comments
07/23/2025	32 City Comments
07/23/2025	33 City Comments
07/23/2025	34 City Comments
07/23/2025	35 City Comments
07/23/2025	36 City Comments
07/23/2025	37 City Comments
07/23/2025	38 City Comments
07/23/2025	39 City Comments
07/23/2025	40 City Comments
07/23/2025	41 City Comments
07/23/2025	42 City Comments
07/23/2025	43 City Comments
07/23/2025	44 City Comments
07/23/2025	45 City Comments
07/23/2025	46 City Comments
07/23/2025	47 City Comments
07/23/2025	48 City Comments
07/23/2025	49 City Comments
07/23/2025	50 City Comments
07/23/2025	51 City Comments
07/23/2025	52 City Comments
07/23/2025	53 City Comments
07/23/2025	54 City Comments
07/23/2025	55 City Comments
07/23/2025	56 City Comments
07/23/2025	57 City Comments
07/23/2025	58 City Comments
07/23/2025	59 City Comments
07/23/2025	60 City Comments
07/23/2025	61 City Comments
07/23/2025	62 City Comments
07/23/2025	63 City Comments
07/23/2025	64 City Comments
07/23/2025	65 City Comments
07/23/2025	66 City Comments
07/23/2025	67 City Comments
07/23/2025	68 City Comments
07/23/2025	69 City Comments
07/23/2025	70 City Comments
07/23/2025	71 City Comments
07/23/2025	72 City Comments
07/23/2025	73 City Comments
07/23/2025	74 City Comments
07/23/2025	75 City Comments
07/23/2025	76 City Comments
07/23/2025	77 City Comments
07/23/2025	78 City Comments
07/23/2025	79 City Comments
07/23/2025	80 City Comments
07/23/2025	81 City Comments
07/23/2025	82 City Comments
07/23/2025	83 City Comments
07/23/2025	84 City Comments
07/23/2025	85 City Comments
07/23/2025	86 City Comments
07/23/2025	87 City Comments
07/23/2025	88 City Comments
07/23/2025	89 City Comments
07/23/2025	90 City Comments
07/23/2025	91 City Comments
07/23/2025	92 City Comments
07/23/2025	93 City Comments
07/23/2025	94 City Comments
07/23/2025	95 City Comments
07/23/2025	96 City Comments
07/23/2025	97 City Comments
07/23/2025	98 City Comments
07/23/2025	99 City Comments
07/23/2025	100 City Comments

The Residences
at Naper and Plank

Plank Rd./Tuthill Rd./Burlington Ave./ Naper Blvd.
Naperville, Illinois

Lincoln Property Company

120 North LaSalle Street
Chicago, IL 60602
312-345-8789



220 N. Smith Street Suite 210
Palatine, Illinois 60067
847 705 2200

JOB NO: -- PROJ MGR: TS
DRAWN: TJS CHECKED: --
ILLUSTRATIVE SITE PLAN
AND TITLE SHEET



Site Data

Proposed Zoning R3A (PUD/Medium Density Multiple Family Residence District) upon annexation.

Site Area 350,647 SF (8.05 Ac)

Proposed Density 34 Two Story Townhomes (Two Car Gar.)
56 Three Story Townhomes (Two Car Gar.)
90 Total Units (11.2 Du/Ac.)

Parking

Required Pkg./Unit 2.25 Spaces/ Unit
203 Total Required Parking Spaces

Provided Pkg./Unit

Front Garage Townhomes (34 Homes)
Garages 68
Apron Spaces 68
Total Spaces 136 Spaces (4:1 Ratio)

Rear Garage Rowhomes (56 Homes)
Garages 112
Private Dr. Sp. 26
Total Spaces 138 Spaces (2.5:1 Ratio)

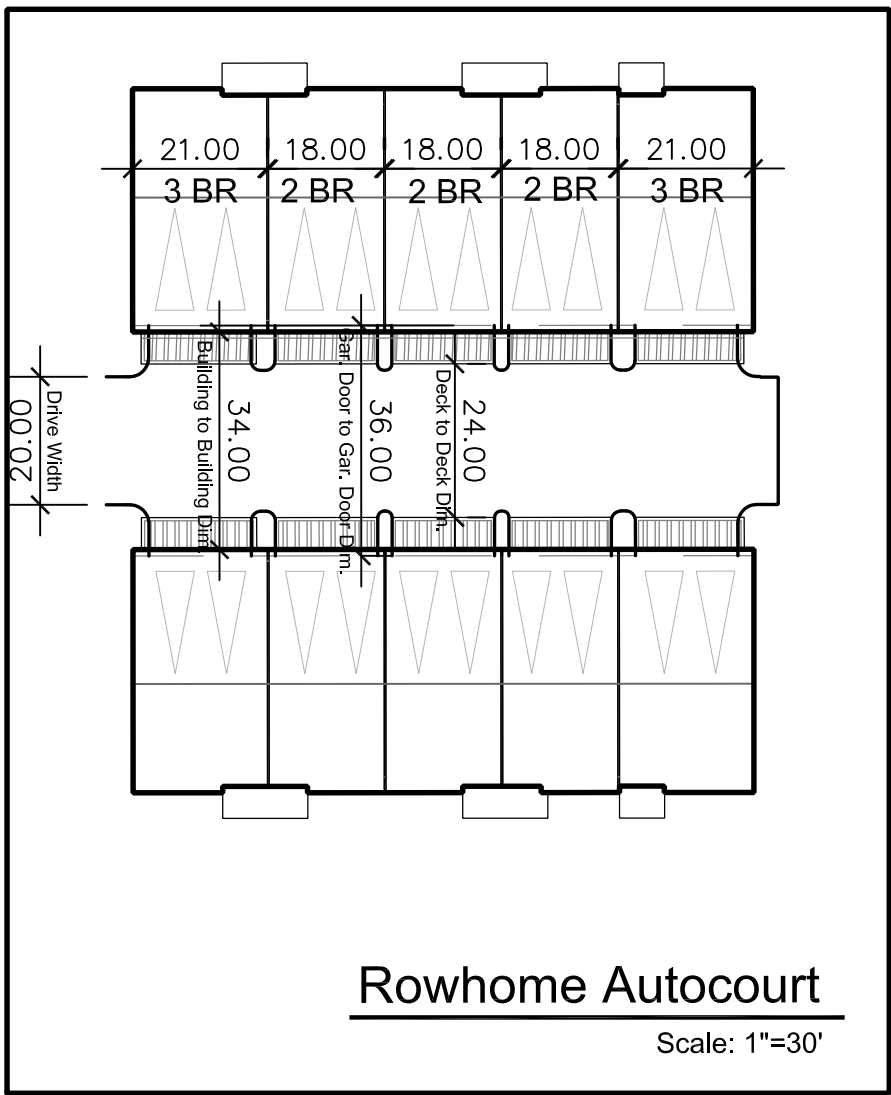
Total Site 274 Spaces (3.0:1 Ratio)

Yard Requirements	Yard Type	Required	Proposed
West Parcel (Tuthill)	Front Yard	25'	25' Min
(Burlington Avenue)	Corner Side Yard	15'	*37' Min.
(North Property Line)	Interior Side Yard	6'	8' Min.
(Naperville Wheaton Road)	Rear Yard	25'	25'
East Parcel (Tuthill)	Rear Yard	25'	*37' Min
(Plank Road)	Corner Side Yard	15'	23' Min.
(North Property Line)	Interior Side Yard	6'	8' Min.
(Naperville Boulevard)	Front Yard	25'	25' Min.

*Denotes Platted Setback

90 UNITS
Townhouse Type A
2 story
34 Units

Rowhome Type B
3 story
56 Units



ISSUE DATE:	07-27-2025
REVISIONS	
02/25/2025	1 City Comments
04/10/2025	2 City Comments
07/23/2025	3 City Comments
07/23/2025	4 City Comments
07/23/2025	5 City Comments
07/23/2025	6 City Comments
07/23/2025	7 City Comments
07/23/2025	8 City Comments
07/23/2025	9 City Comments
07/23/2025	10 City Comments
07/23/2025	11 City Comments
07/23/2025	12 City Comments
07/23/2025	13 City Comments
07/23/2025	14 City Comments
07/23/2025	15 City Comments
07/23/2025	16 City Comments
07/23/2025	17 City Comments
07/23/2025	18 City Comments
07/23/2025	19 City Comments
07/23/2025	20 City Comments
07/23/2025	21 City Comments
07/23/2025	22 City Comments
07/23/2025	23 City Comments
07/23/2025	24 City Comments
07/23/2025	25 City Comments
07/23/2025	26 City Comments
07/23/2025	27 City Comments
07/23/2025	28 City Comments
07/23/2025	29 City Comments
07/23/2025	30 City Comments
07/23/2025	31 City Comments
07/23/2025	32 City Comments
07/23/2025	33 City Comments
07/23/2025	34 City Comments
07/23/2025	35 City Comments
07/23/2025	36 City Comments
07/23/2025	37 City Comments
07/23/2025	38 City Comments
07/23/2025	39 City Comments
07/23/2025	40 City Comments
07/23/2025	41 City Comments
07/23/2025	42 City Comments
07/23/2025	43 City Comments
07/23/2025	44 City Comments
07/23/2025	45 City Comments
07/23/2025	46 City Comments
07/23/2025	47 City Comments
07/23/2025	48 City Comments
07/23/2025	49 City Comments
07/23/2025	50 City Comments
07/23/2025	51 City Comments
07/23/2025	52 City Comments
07/23/2025	53 City Comments
07/23/2025	54 City Comments
07/23/2025	55 City Comments
07/23/2025	56 City Comments
07/23/2025	57 City Comments
07/23/2025	58 City Comments
07/23/2025	59 City Comments
07/23/2025	60 City Comments
07/23/2025	61 City Comments
07/23/2025	62 City Comments
07/23/2025	63 City Comments
07/23/2025	64 City Comments
07/23/2025	65 City Comments
07/23/2025	66 City Comments
07/23/2025	67 City Comments
07/23/2025	68 City Comments
07/23/2025	69 City Comments
07/23/2025	70 City Comments
07/23/2025	71 City Comments
07/23/2025	72 City Comments
07/23/2025	73 City Comments
07/23/2025	74 City Comments
07/23/2025	75 City Comments
07/23/2025	76 City Comments
07/23/2025	77 City Comments
07/23/2025	78 City Comments
07/23/2025	79 City Comments
07/23/2025	80 City Comments
07/23/2025	81 City Comments
07/23/2025	82 City Comments
07/23/2025	83 City Comments
07/23/2025	84 City Comments
07/23/2025	85 City Comments
07/23/2025	86 City Comments
07/23/2025	87 City Comments
07/23/2025	88 City Comments
07/23/2025	89 City Comments
07/23/2025	90 City Comments
07/23/2025	91 City Comments
07/23/2025	92 City Comments
07/23/2025	93 City Comments
07/23/2025	94 City Comments
07/23/2025	95 City Comments
07/23/2025	96 City Comments
07/23/2025	97 City Comments
07/23/2025	98 City Comments
07/23/2025	99 City Comments
07/23/2025	100 City Comments

Lincoln Property Company

120 North LaSalle Street
Chicago, IL 60602
312-345-8789

The Residences
at Naper and Plank

Plank Rd./Tuthill Rd./Burlington Ave./ Naper Blvd.
Naperville, Illinois



220 N. Smith Street Suite 210
Palatine, Illinois 60067
847 705 2200

JOB NO: -- PROJ MGR: TS
DRAWN: TJS CHECKED: --
DIMENSIONED SITE PLAN

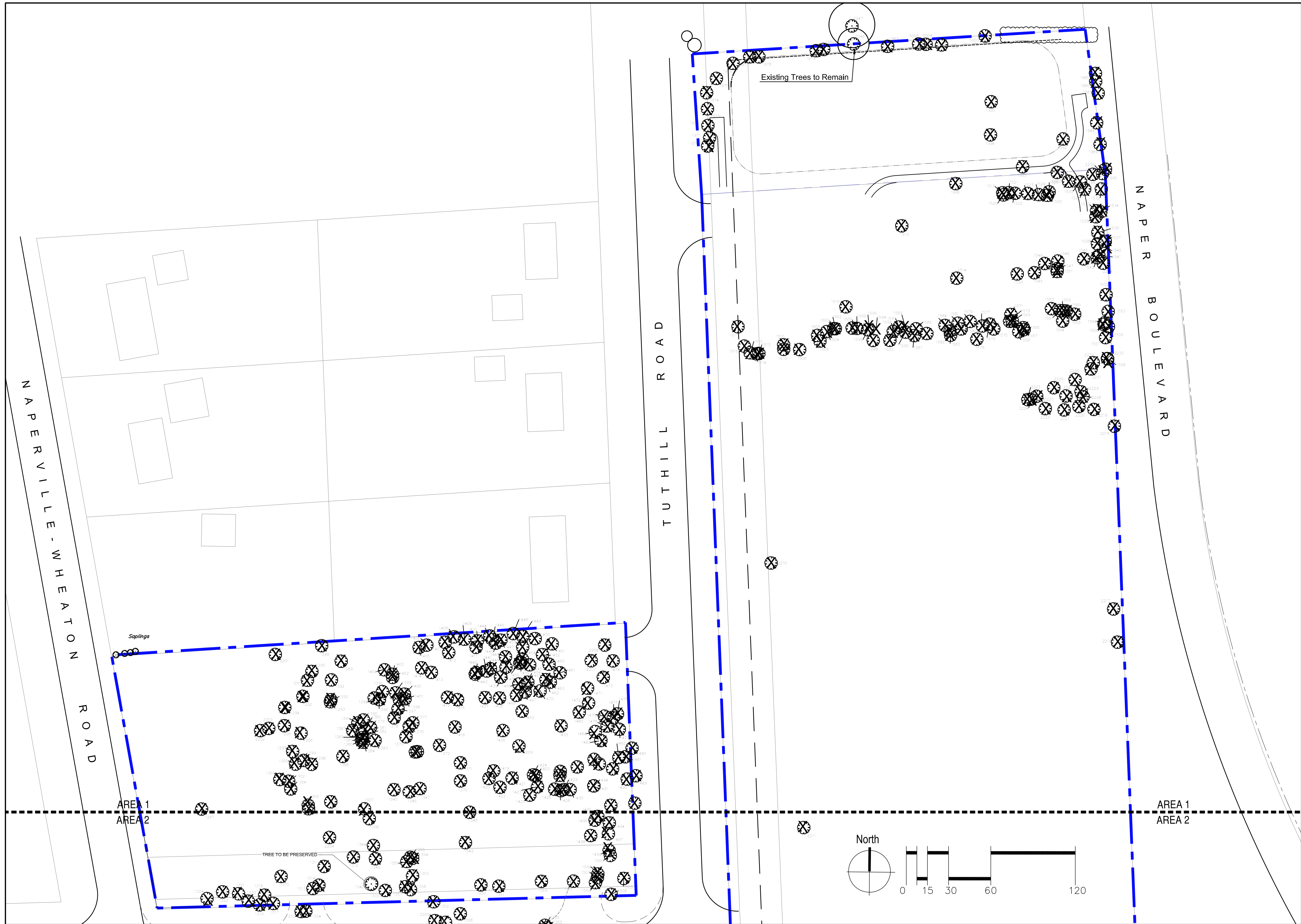


EXHIBIT C

ISSUE DATE: 07-27-2025

REVISIONS	
07/25/2025	1 City Comments
04/17/2025	1 City Comments
03/27/2025	1 City Comments
07/23/2025	1 City Comments
04/23/2025	1 City Comments

THIS PLAN AND ITS CONTENTS ARE THE PROPERTY OF BSB DESIGN, INC. AND SHALL REMAIN THE PROPERTY OF BSB DESIGN, INC. ALL RIGHTS ARE RESERVED.

The Residences at Naper and Plank

Plank Rd./Tutthill Rd./Burlington Ave./ Naper Blvd.
Naperville, Illinois

Lincoln Property Company

120 North LaSalle Street
Chicago, IL 60602
312-345-8789



220 N. Smith Street Suite 210
Palatine, Illinois 60067
847 705 2200

JOB NO: -- PROJ MGR: TS
DRAWN: TJS CHECKED: --
TREE SURVEY AREA ONE

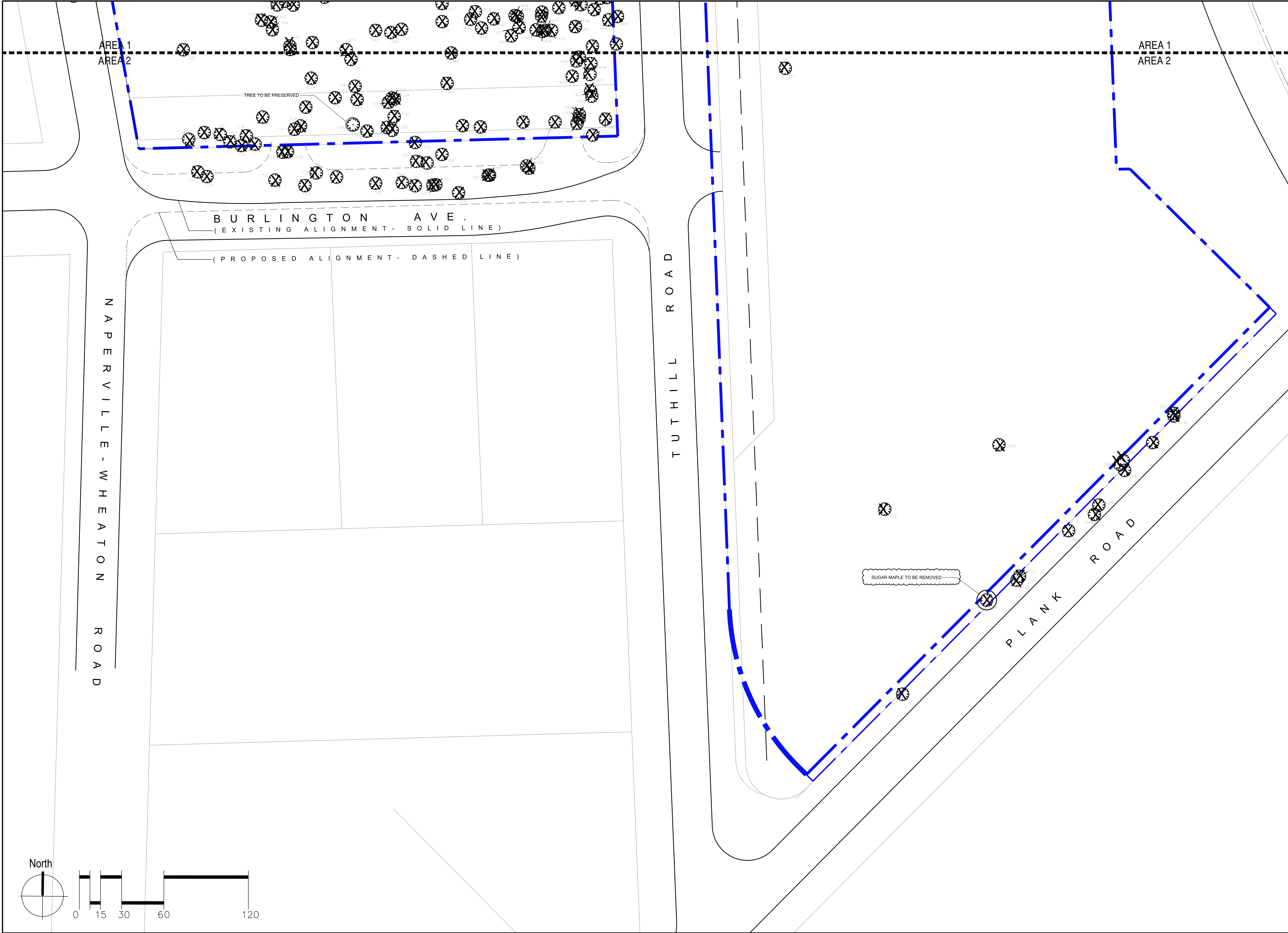


EXHIBIT C

ISSUE DATE: 07-27-2025	
REVISIONS	
07/25/2025	1 City Comments
04/17/2025	2 City Comments
07/17/2025	3 City Comments
07/23/2025	4 City Comments
04/23/2025	5 City CD Comments

**The Residences
at Naper and Plank**
Plank Rd./Tutthill Rd./Burlington Ave./ Naper Blvd.
Naperville, Illinois

Lincoln Property Company
120 North LaSalle Street
Chicago, IL 60602
312-345-8789

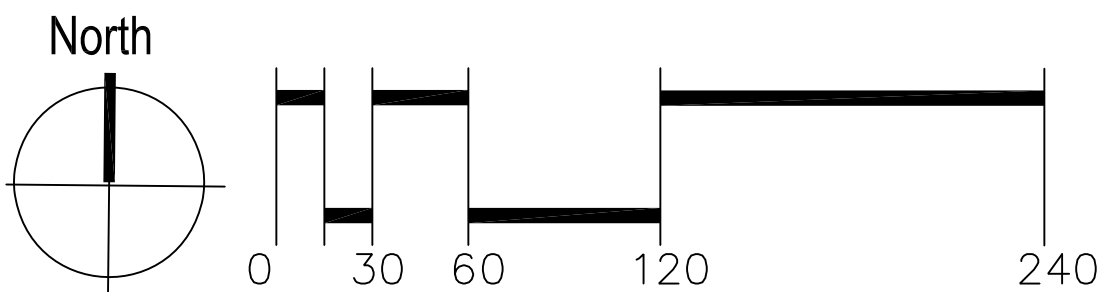


220 N. Smith Street Suite 210
Palatine, Illinois 60067
847 705 2200

JOB NO: -- PROJ MGR: TS
DRAWN: TJS CHECKED: --
TREE SURVEY AREA TWO



EXHIBIT C



ISSUE DATE: 07-27-2025	
REVISIONS	
02/25/2025	1 City Comments
04/17/2025	2 City Comments
05/22/2025	3 City Comments
07/23/2025	4 City Comments
08/29/2025	5 City Comments
09/23/2025	6 City Comments

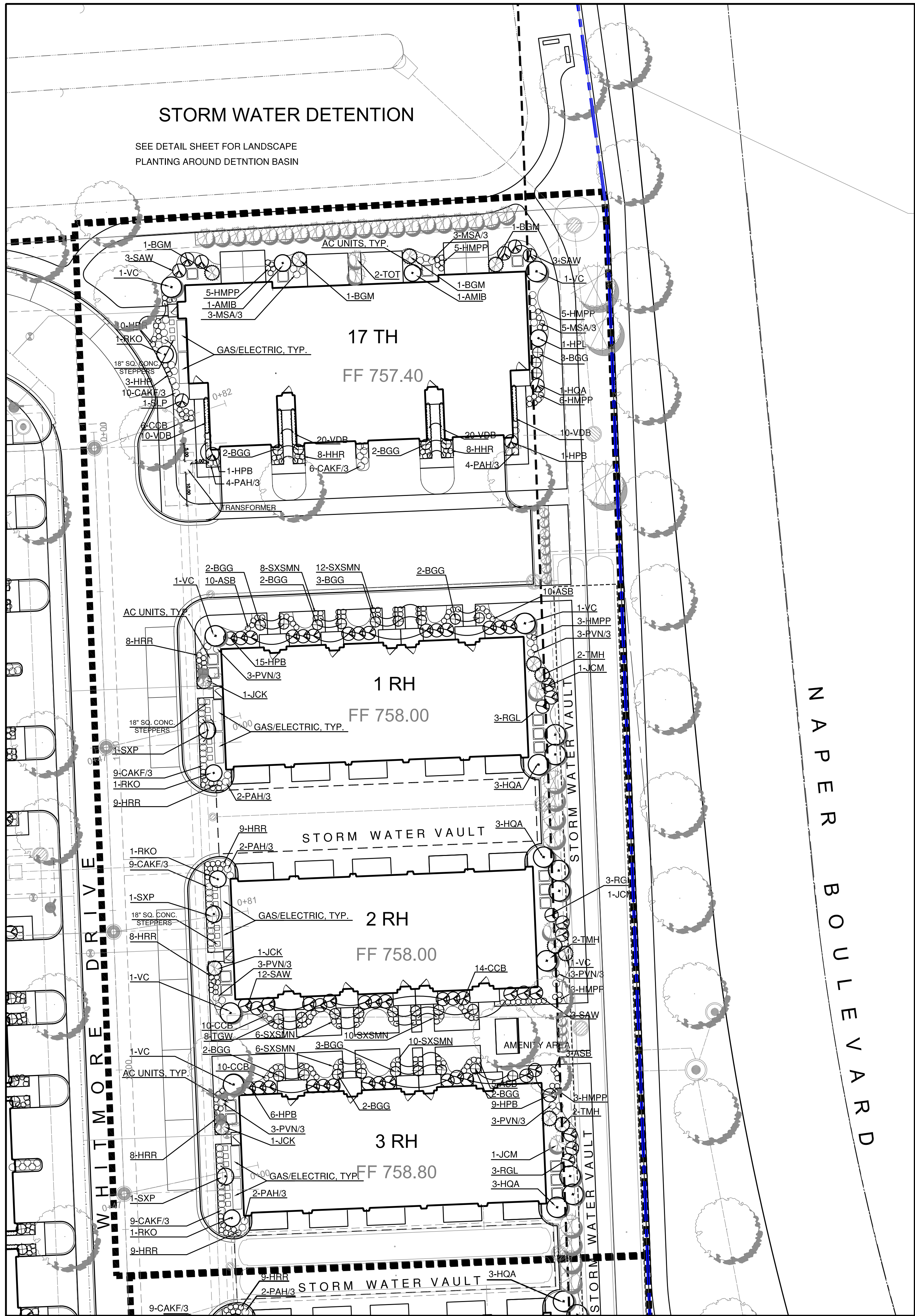
Lincoln Property Company
120 North LaSalle Street
Chicago, IL 60602
312-345-8789

**The Residences
at Naper and Plank**
Plank Rd./Tuthill Rd./Burlington Ave./ Naper Blvd.
Naperville, Illinois



220 N. Smith Street Suite 210
Palatine, Illinois 60067
847 705 2200

JOB NO: -- PROJ MGR: TS
DRAWN: TJS CHECKED: --
FOUNDATION LANDSCAPE PLAN
SHEET KEY



Area One- Typical Landscape Foundation Plans-
Row Home Buildings 1,2 3
Townhome Building 17

CODE	QTY	SIZE	BOTANIC NAME	COMMON NAME
TOWNHOME BUILDING #17				
Evergreen Trees - Fastigiata				
TOT	2	8' high	Thuja occidentalis 'Techny'	Mission Arborvitae
Deciduous Shrubs - Large				
HPL	1	#7 Cont. / 36"	Hydrangea paniculata 'Limelight'	Limelight Hydrangea
HQA	1	#7 Cont. / 36"	Hydrangea quercifolia 'Alice'	Alice Oakleaf Hydrangea
VC	2	#7 Cont. / 36"	Viburnum carlesii	Koreanspice Viburnum
Deciduous Shrubs - Medium to Small				
AMIB	2	#5 Cont. / 30"	Aronia melanocarpa 'Morton'	Iroquois Beauty Black Chokeberry
HPB	2	#5 Cont. / 30"	Hydrangea Paniculata 'Bobo'	Bobo Hydrangea
RKO	1	#5 Cont. / 30"	Rosa 'Knock Out'	Sunny Knock Out Rose
SAW	6	#3 Cont. / 24"	Spiraea bumalda 'Anthony Waterer'	Anthony Waterer Bumald Spirea
SLP	1	#3 Cont. / 24"	Spiraea japonica 'Little Princess'	Little Princess Japanese Spirea
Evergreen Shrubs				
BGG	7	24" wide	Buxus x 'Green Gem'	Green Gem Boxwood
BGM	4	36" high	Buxus x 'Green Mountain'	Green Mountain Boxwood
Ornamental Grasses				
CAKF/3	16	3 Gal.	Calamagrostis acutiflora 'Karl Foerster'	Karl Foerster Feather Reed Grass
MSA/3	11	3 Gal.	Miscanthus sinensis 'Adagio'	Adagio Dwarf Maiden Grass
PAH/3	8	3 Gal.	Pennisetum alopecuroides 'Hameln'	Dwarf Fountain Grass
Perennials				
ASB	6	1 Gal.	Allium 'Summer Beauty'	Summer Beauty Ornamental Onion
CCB	6	1 Gal.	Coreopsis 'Crème Brulee'	Crème Brulee Tickseed
HHR	21	1 Gal.	Heuchera micrantha 'Happy Returns'	Happy Returns Daylily
HMPP	21	1 Gal.	Heuchera micrantha 'Palace Purple'	Palace Purple Coralbells
HRR	10	1 Gal.	Heuchera 'Rosy Returns'	Rosy Returns Daylily
NFBW	12	1 Gal.	Nepeta faassenii 'Blue Wonder'	Blue Wonder Catmint
Groundcovers				
VDB	60	1 Flat	Vinca minor 'Dart's Blue'	Dart's Blue Periwinkle

CODE	QTY	SIZE	BOTANIC NAME	COMMON NAME
ROWHOME BUILDING #1				
Evergreen Trees - Ornamental				
JCM	1	6' high	Juniperus chinensis 'Mount Batten'	Mount Batten Juniper
Deciduous Shrubs - Large				
HQA	3	#7 Cont. / 36"	Hydrangea quercifolia 'Alice'	Alice Oakleaf Hydrangea
VC	2	#7 Cont. / 36"	Viburnum carlesii	Koreanspice Viburnum
Deciduous Shrubs - Medium to Small				
HPB	15	#5 Cont. / 30"	Hydrangea Paniculata 'Bobo'	Bobo Hydrangea
RKO	1	#5 Cont. / 30"	Rosa 'Knock Out'	Sunny Knock Out Rose
RGL	3	#3 Cont. / 24"	Rhus aromatica 'Gro-Low'	Gro-Low Sumac
SXP	1	#5 Cont. / 30"	Syringa x 'Penda'	Bloomerang Lilac
Evergreen Shrubs				
BGG	9	24" wide	Buxus x 'Green Gem'	Green Gem Boxwood
JCK	1	#5 Cont.	Juniperus chinensis 'Kallay'	Kallay Compact Chinese Juniper
TMH	2	36" wide	Taxus x media 'Hicksii'	Hicks Intermediate Yew

CAKF/3	9	3 Gal.	Calamagrostis acutiflora 'Karl Foerster'	Karl Foerster Feather Reed Grass
PAH/3	2	3 Gal.	Pennisetum alopecuroides 'Hameln'	Dwarf Fountain Grass
PVN/3	6	3 Gal.	Panicum virgatum 'Northwind'	Northwind Switch Grass
Perennials				
ASB	20	1 Gal.	Allium 'Summer Beauty'	Summer Beauty Ornamental Onion
HMPP	3	1 Gal.	Heuchera micrantha 'Palace Purple'	Palace Purple Coralbells
HRR	17	1 Gal.	Heuchera 'Rosy Returns'	Rosy Returns Daylily
SXSMN	20	1 Gal.	Salvia x suberba 'May Night'	May Night Sage

CODE	QTY	SIZE	BOTANIC NAME	COMMON NAME
ROWHOME BUILDING #2				
Evergreen Trees - Ornamental				
JCM	1	6' high	Juniperus chinensis 'Mount Batten'	Mount Batten Juniper
Deciduous Shrubs - Large				
HQA	3	#7 Cont. / 36"	Hydrangea quercifolia 'Alice'	Alice Oakleaf Hydrangea
VC	2	#7 Cont. / 36"	Viburnum carlesii	Koreanspice Viburnum
Deciduous Shrubs - Medium to Small				
RKO	1	#5 Cont. / 30"	Rosa 'Knock Out'	Sunny Knock Out Rose
RGL	3	#3 Cont. / 24"	Rhus aromatica 'Gro-Low'	Gro-Low Sumac
SAW	15	#3 Cont. / 24"	Spiraea bumalda 'Anthony Waterer'	Anthony Waterer Bumald Spirea
SXP	1	#5 Cont. / 30"	Syringa x 'Penda'	Bloomerang Lilac
Evergreen Shrubs				
JCK	1	#5 Cont.	Juniperus chinensis 'Kallay'	Kallay Compact Chinese Juniper
TGW	8	24" wide	Taxus cuspidata 'Green Wave'	Green Wave Japanese Yew
TMH	2	36" wide	Taxus x media 'Hicksii'	Hicks Intermediate Yew
Ornamental Grasses				
CAKF/3	9	3 Gal.	Calamagrostis acutiflora 'Karl Foerster'	Karl Foerster Feather Reed Grass
PAH/3	2	3 Gal.	Pennisetum alopecuroides 'Hameln'	Dwarf Fountain Grass
PVN/3	6	3 Gal.	Panicum virgatum 'Northwind'	Northwind Switch Grass
Perennials				
CCB	24	1 Gal.	Coreopsis 'Crème Brulee'	Crème Brulee Tickseed
HMPP	3	1 Gal.	Heuchera micrantha 'Palace Purple'	Palace Purple Coralbells
HRR	17	1 Gal.	Heuchera 'Rosy Returns'	Rosy Returns Daylily
SXSMN	16	1 Gal.	Salvia x suberba 'May Night'	May Night Sage

CODE	QTY	SIZE	BOTANIC NAME	COMMON NAME
ROWHOME BUILDING #3				
Evergreen Trees - Ornamental				
JCM	1	6' high	Juniperus chinensis 'Mount Batten'	Mount Batten Juniper
Deciduous Shrubs - Large				
HQA	3	#7 Cont. / 36"	Hydrangea quercifolia 'Alice'	Alice Oakleaf Hydrangea
VC	2	#7 Cont. / 36"	Viburnum carlesii	Koreanspice Viburnum
Deciduous Shrubs - Medium to Small				
HPB	15	#5 Cont. / 30"	Hydrangea Paniculata 'Bobo'	Bobo Hydrangea
RKO	1	#5 Cont. / 30"	Rosa 'Knock Out'	Sunny Knock Out Rose
RGL	3	#3 Cont. / 24"	Rhus aromatica 'Gro-Low'	Gro-Low Sumac
SXP	1	#5 Cont. / 30"	Syringa x 'Penda'	Bloomerang Lilac
Evergreen Shrubs				
BGG	9	24" wide	Buxus x 'Green Gem'	Green Gem Boxwood
JCK	1	#5 Cont.	Juniperus chinensis 'Kallay'	Kallay Compact Chinese Juniper
TMH	2	36" wide	Taxus x media 'Hicksii'	Hicks Intermediate Yew
Ornamental Grasses				
CAKF/3	9	3 Gal.	Calamagrostis acutiflora 'Karl Foerster'	Karl Foerster Feather Reed Grass
PAH/3	2	3 Gal.	Pennisetum alopecuroides 'Hameln'	Dwarf Fountain Grass
PVN/3	6	3 Gal.	Panicum virgatum 'Northwind'	Northwind Switch Grass
Perennials				
ASB	8	1 Gal.	Allium 'Summer Beauty'	Summer Beauty Ornamental Onion
CCB	10	1 Gal.	Coreopsis 'Crème Brulee'	Crème Brulee Tickseed
HMPP	3	1 Gal.	Heuchera micrantha 'Palace Purple'	Palace Purple Coralbells
HRR	17	1 Gal.	Heuchera 'Rosy Returns'	Rosy Returns Daylily
SXSMN	16	1 Gal.	Salvia x suberba 'May Night'	May Night Sage

ISSUE DATE: 07-27-2025	REVISIONS	
	02/25/2025	1 City Comments
	04/10/2025	2 City Comments
	07/23/2025	3 City Comments
	07/23/2025	4 City Comments
	07/23/2025	5 City Comments

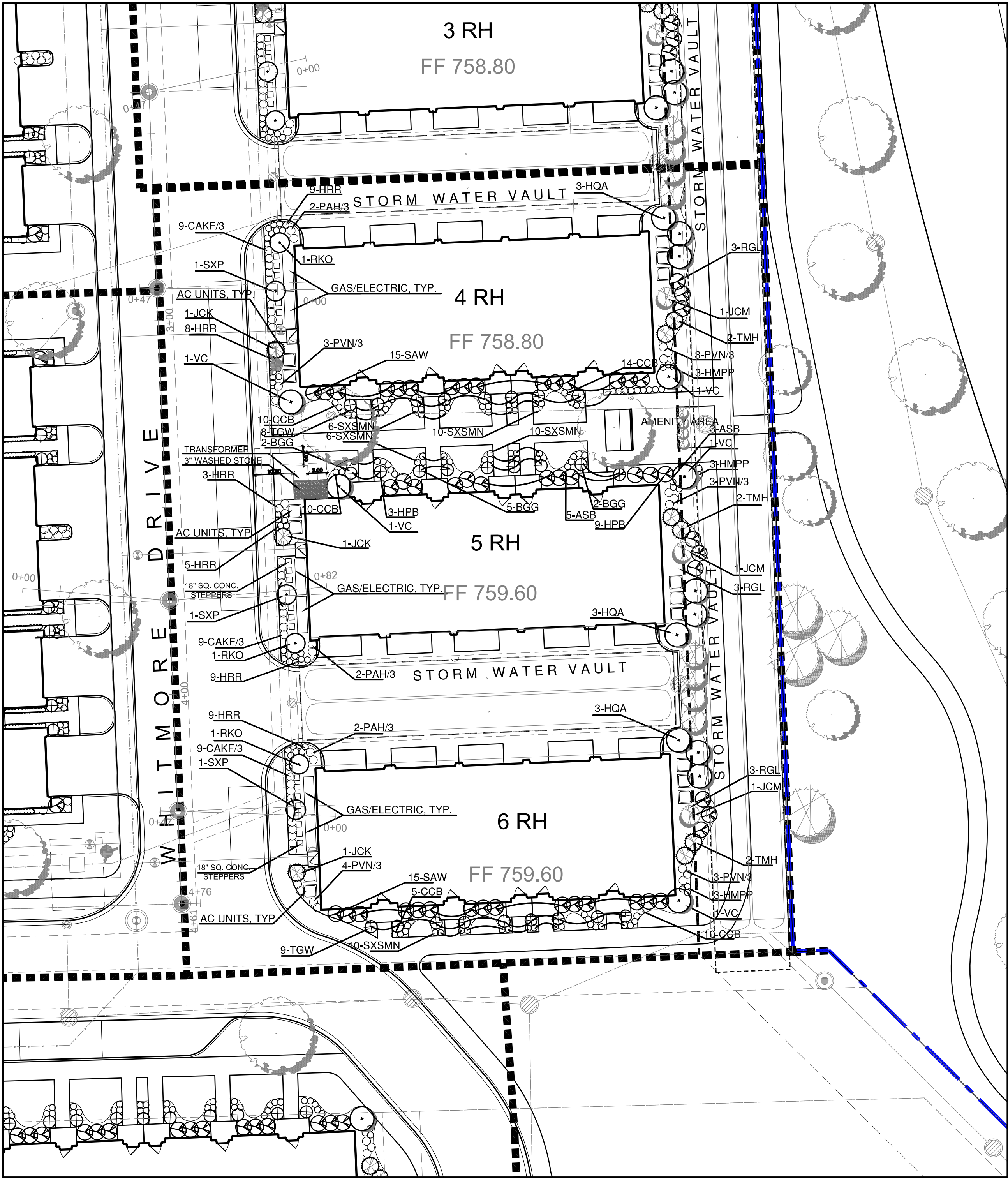
Lincoln Property Company
120 North LaSalle Street
Chicago, IL 60602
312-345-8789

The Residences
at Naper and Plank
Plank Rd./Tuthill Rd./Burlington Ave./ Naper Blvd.
Naperville, Illinois



220 N. Smith Street Suite 210
Palatine, Illinois 60067
847 705 2200

JOB NO: -- PROJ MGR: TS
DRAWN: TJS CHECKED: --
FOUNDATION LANDSCAPE PLAN
AREA ONE



Area Two Typical Landscape Foundation Plans-
Row Home Buildings 4,5,6

CODE	QTY	SIZE	BOTANIC NAME	COMMON NAME
ROWHOME BUILDING #4				
Evergreen Trees - Ornamental				
JCM	1	6' high	Juniperus chinensis 'Mount Batten'	Mpunt Batten Juniper
Deciduous Shrubs - Large				
HQA	3	#7 Cont. / 36"	Hydrangea quercifolia 'Alice'	Alice Oakleaf Hydrangea
VC	2	#7 Cont. / 36"	Viburnum carlesii	Koreanspice Viburnum
Deciduous Shrubs - Medium to Small				
RKO	1	#5 Cont. / 30"	Rosa 'Knock Out'	Sunny Knock Out Rose
RGL	3	#3 Cont. / 24"	Rhus aromatica 'Gro-Low'	Gro-Low Sumac
SAW	12	#3 Cont. / 24"	Spiraea bumalda 'Anthony Waterer'	Anthony Waterer Bumald Spirea
SXP	1	#5 Cont. / 30"	Syringa x 'Penda'	Bloomerang Lilac
Evergreen Shrubs				
JCK	1	#5 Cont.	Juniperus chinensis 'Kallay'	Kallay Compact Chinese Juniper
TGW	8	24" wide	Taxus cuspidata 'Green Wave'	Green Wave Japanese Yew
TMH	2	36" wide	Taxus x media 'Hicksii'	Hicks Intermediate Yew
Ornamental Grasses				
CAKF/3	9	3 Gal.	Calamagrostis acutiflora 'Karl Foerster'	Karl Foerster Feather Reed Grass
PAH/3	2	3 Gal.	Pennisetum alopecuroides 'Hameln'	Dwarf Fountain Grass
PVN/3	6	3 Gal.	Panicum virgatum 'Northwind'	Northwind Switch Grass
Perennials				
CCB	24	1 Gal.	Coreopsis 'Crème Brulee'	Crème Brulee Tickseed
HMPP	3	1 Gal.	Heuchera micrantha 'Palace Purple'	Palace Purple Coralbells
HRR	17	1 Gal.	Hemerocallis 'Rosy Returns'	Rosy Returns Daylily
SXSMN	16	1 Gal.	Salvia x suberba 'May Night'	May Night Sage

CODE	QTY	SIZE	BOTANIC NAME	COMMON NAME
ROWHOME BUILDING #5				
Deciduous Trees - Ornamental				
SRIS	1	6' high	Syringa reticulata 'Ivory Silk'	Ivory Silk Japanese Tree Lilac
Deciduous Shrubs - Large				
HQA	3	#7 Cont. / 36"	Hydrangea quercifolia 'Alice'	Alice Oakleaf Hydrangea
VC	2	#7 Cont. / 36"	Viburnum carlesii	Koreanspice Viburnum
Deciduous Shrubs - Medium to Small				
HPB	12	#5 Cont. / 30"	Hydrangea paniculata 'Bobo'	Bobo Hydrangea
RKO	1	#5 Cont. / 30"	Rosa 'Knock Out'	Sunny Knock Out Rose
RGL	3	#3 Cont. / 24"	Rhus aromatica 'Gro-Low'	Gro-Low Sumac
SXP	1	#5 Cont. / 30"	Syringa x 'Penda'	Bloomerang Lilac
Evergreen Shrubs				
BGG	9	24" wide	Buxus x 'Green Gem'	Green Gem Boxwood
JCK	1	#5 Cont.	Juniperus chinensis 'Kallay'	Kallay Compact Chinese Juniper
TMH	2	36" wide	Taxus x media 'Hicksii'	Hicks Intermediate Yew
Ornamental Grasses				
CAKF/3	9	3 Gal.	Calamagrostis acutiflora 'Karl Foerster'	Karl Foerster Feather Reed Grass
PAH/3	2	3 Gal.	Pennisetum alopecuroides 'Hameln'	Dwarf Fountain Grass
PVN/3	3	3 Gal.	Panicum virgatum 'Northwind'	Northwind Switch Grass
Perennials				
ASB	8	1 Gal.	Allium 'Summer Beauty'	Summer Beauty Ornamental Onion
CCB	10	1 Gal.	Coreopsis 'Crème Brulee'	Crème Brulee Tickseed
HMPP	3	1 Gal.	Heuchera micrantha 'Palace Purple'	Palace Purple Coralbells
HRR	17	1 Gal.	Hemerocallis 'Rosy Returns'	Rosy Returns Daylily
SXSMN	16	1 Gal.	Salvia x suberba 'May Night'	May Night Sage

CODE	QTY	SIZE	BOTANIC NAME	COMMON NAME
ROWHOME BUILDING #6				
Evergreen Trees - Ornamental				
JCM	1	6' high	Juniperus chinensis 'Mount Batten'	Mpunt Batten Juniper
Deciduous Shrubs - Large				
HQA	3	#7 Cont. / 36"	Hydrangea quercifolia 'Alice'	Alice Oakleaf Hydrangea
VC	1	#7 Cont. / 36"	Viburnum carlesii	Koreanspice Viburnum
Deciduous Shrubs - Medium to Small				
RKO	1	#5 Cont. / 30"	Rosa 'Knock Out'	Sunny Knock Out Rose
RGL	3	#3 Cont. / 24"	Rhus aromatica 'Gro-Low'	Gro-Low Sumac
SAW	15	#3 Cont. / 24"	Spiraea bumalda 'Anthony Waterer'	Anthony Waterer Bumald Spirea
SXP	1	#5 Cont. / 30"	Syringa x 'Penda'	Bloomerang Lilac
Evergreen Shrubs				
JCK	1	#5 Cont.	Juniperus chinensis 'Kallay'	Kallay Compact Chinese Juniper
TGW	9	24" wide	Taxus cuspidata 'Green Wave'	Green Wave Japanese Yew
TMH	2	36" wide	Taxus x media 'Hicksii'	Hicks Intermediate Yew
Ornamental Grasses				
CAKF/3	9	3 Gal.	Calamagrostis acutiflora 'Karl Foerster'	Karl Foerster Feather Reed Grass
PAH/3	2	L	Pennisetum alopecuroides 'Hameln'	Dwarf Fountain Grass
PVN/3	7	3 Gal.	Panicum virgatum 'Northwind'	Northwind Switch Grass
Perennials				
CCB	14	1 Gal.	Coreopsis 'Crème Brulee'	Crème Brulee Tickseed
HMPP	3	1 Gal.	Heuchera micrantha 'Palace Purple'	Palace Purple Coralbells
HRR	9	1 Gal.	Hemerocallis 'Rosy Returns'	Rosy Returns Daylily
SXSMN	10	1 Gal.	Salvia x suberba 'May Night'	May Night Sage

ISSUE DATE: 07-27-2025	REVISIONS	
	02/25/2025	1 City Comments
	04/10/2025	2 City Comments
	07/23/2025	3 City Comments
	08/29/2025	4 City Comments

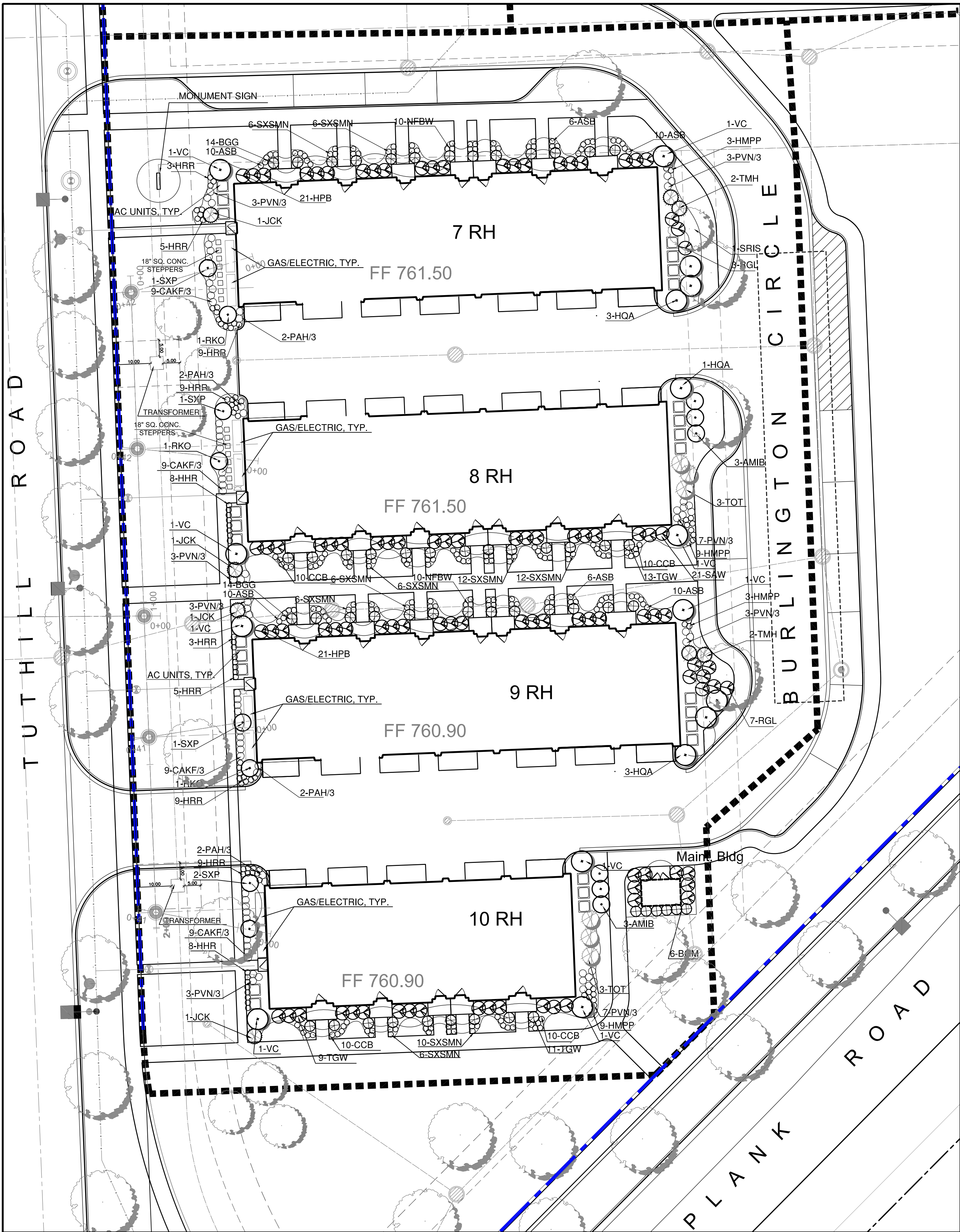
Lincoln Property Company
120 North LaSalle Street
Chicago, IL 60602
312-345-8789

The Residences
at Naper and Plank
Plank Rd./Tuthill Rd./Burlington Ave./ Naper Blvd.
Naperville, Illinois



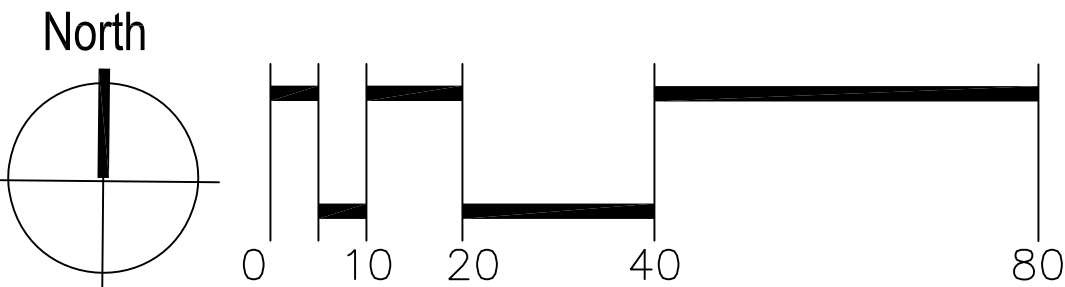
220 N. Smith Street Suite 210
Palatine, Illinois 60067
847 705 2200

JOB NO: -- PROJ MGR: TS
DRAWN: TJS CHECKED: --
FOUNDATION LANDSCAPE PLAN
AREA TWO



Area Three Typical Landscape Foundation Plans-

Row Home Buildings 7,8,9,10



CODE	QTY	SIZE	BOTANIC NAME	COMMON NAME
ROWHOME BUILDING #7				
Deciduous Trees - Ornamental				
SRIS	1	6' high	Syringa reticulata 'Ivory Silk'	Ivory Silk Japanese Tree Lilac
Deciduous Shrubs - Large				
HQA	3	#7 Cont. / 36"	Hydrangea quercifolia 'Alice'	Alice Oakleaf Hydrangea
VC	2	#7 Cont. / 36"	Viburnum carlesii	Koreanspice Viburnum
Deciduous Shrubs - Medium to Small				
HPB	21	#5 Cont. / 30"	Hydrangea paniculata 'Bobo'	Bobo Hydrangea
RKO	1	#5 Cont. / 30"	Rosa 'Knock Out'	Sunny Knock Out Rose
RGL	3	#3 Cont. / 24"	Rhus aromatica 'Gro-Low'	Gro-Low Sumac
SXP	1	#5 Cont. / 30"	Syringa x 'Penda'	Bloomerang Lilac
Evergreen Shrubs				
BGG	14	24" wide	Buxus x 'Green Gem'	Green Gem Boxwood
JCK	1	#5 Cont.	Juniperus chinensis 'Kallay'	Kallay Compact Chinese Juniper
TMH	2	36" wide	Taxus x media 'Hicksii'	Hicks Intermediate Yew
Ornamental Grasses				
CAKF/3	9	3 Gal.	Calamagrostis acutiflora 'Karl Foerster'	Karl Foerster Feather Reed Grass
PAH/3	2	3 Gal.	Pennisetum alopecuroides 'Hameln'	Dwarf Fountain Grass
PVN/3	6	3 Gal.	Panicum virgatum 'Northwind'	Northwind Switch Grass
Perennials				
ASB	26	1 Gal.	I	Summer Beauty Ornamental Onion
HMPP	3	1 Gal.	Heuchera micrantha 'Palace Purple'	Palace Purple Coralbells
HRR	17	1 Gal.	Hemerocallis 'Rosy Returns'	Rosy Returns Daylily
NFBW	10	1 Gal.	Nepeta faassenii 'Blue Wonder'	Blue Wonder Catmint
SXSMN	12	1 Gal.	Salvia x suberba 'May Night'	May Night Sage

CODE	QTY	SIZE	BOTANIC NAME	COMMON NAME
ROWHOME BUILDING #8				
Evergreen Trees - Fastigate				
TOT	3	8' high	Thuja occidentalis 'Techny'	Mission Arborvitae
Deciduous Shrubs - Large				
HQA	1	#7 Cont. / 36"	Hydrangea quercifolia 'Alice'	Alice Oakleaf Hydrangea
VC	2	#7 Cont. / 36"	Viburnum carlesii	Koreanspice Viburnum
Deciduous Shrubs - Medium to Small				
AMIB	3	5 Gal./24"	Aronia melanocarpa 'Iroquois Beauty'	Iroquois Beauty Black Chokeberry
RKO	1	#5 Cont. / 30"	Rosa 'Knock Out'	Sunny Knock Out Rose
SAW	21	#3 Cont. / 24"	Spiraea bumalda 'Anthony Waterer'	Anthony Waterer Bumald Spirea
SXP	1	#5 Cont. / 30"	Syringa x 'Penda'	Bloomerang Lilac
Evergreen Shrubs				
JCK	1	#5 Cont.	Juniperus chinensis 'Kallay'	Kallay Compact Chinese Juniper
TGW	13	co	Taxus cuspidata 'Green Wave'	Green Wave Japanese Yew
Ornamental Grasses				
CAKF/3	9	3 Gal.	Calamagrostis acutiflora 'Karl Foerster'	Karl Foerster Feather Reed Grass
PAH/3	2	3 Gal.	Pennisetum alopecuroides 'Hameln'	Dwarf Fountain Grass
PVN/3	10	3 Gal.	Panicum virgatum 'Northwind'	Northwind Switch Grass
Perennials				
CCB	20	1 Gal.	Coreopsis 'Crème Brulee'	Crème Brulee Tickseed
HMPP	9	1 Gal.	Heuchera micrantha 'Palace Purple'	Palace Purple Coralbells
HRR	8	1 Gal.	Hemerocallis 'Happy Returns'	Happy Returns Daylily
HRR	9	1 Gal.	Hemerocallis 'Rosy Returns'	Rosy Returns Daylily
SXSMN	30	1 Gal.	Salvia x suberba 'May Night'	May Night Sage

CODE	QTY	SIZE	BOTANIC NAME	COMMON NAME
ROWHOME BUILDING #9				
Deciduous Trees - Ornamental				
AC	1	6' high	Amelanchier canadensis	Shadlbow Serviceberry
Deciduous Shrubs - Large				
HQA	3	#7 Cont. / 36"	Hydrangea quercifolia 'Alice'	Alice Oakleaf Hydrangea
HPB	21	#5 Cont. / 30"	Hydrangea paniculata 'Bobo'	Bobo Hydrangea
VC	2	#7 Cont. / 36"	Viburnum carlesii	Koreanspice Viburnum
Deciduous Shrubs - Medium to Small				
RKO	1	#5 Cont. / 30"	Rosa 'Knock Out'	Sunny Knock Out Rose
RGL	7	#3 Cont. / 24"	Rhus aromatica 'Gro-Low'	Gro-Low Sumac
SAW	18	#3 Cont. / 24"	Spiraea bumalda 'Anthony Waterer'	Anthony Waterer Bumald Spirea
SXP	1	#5 Cont. / 30"	Syringa x 'Penda'	Bloomerang Lilac
Evergreen Shrubs				
BGG	14	24" wide	Buxus x 'Green Gem'	Green Gem Boxwood
JCK	1	#5 Cont.	Juniperus chinensis 'Kallay'	Kallay Compact Chinese Juniper
TGW	11	24" wide	Taxus cuspidata 'Green Wave'	Green Wave Japanese Yew
TMH	2	36" wide	Taxus x media 'Hicksii'	Hicks Intermediate Yew
Ornamental Grasses				
CAKF/3	9	3 Gal.	Calamagrostis acutiflora 'Karl Foerster'	Karl Foerster Feather Reed Grass
PAH/3	2	3 Gal.	Pennisetum alopecuroides 'Hameln'	Dwarf Fountain Grass
PVN/3	6	3 Gal.	Panicum virgatum 'Northwind'	Northwind Switch Grass
Perennials				
ASB	26	1 Gal.	Allium 'Summer Beauty'	Summer Beauty Ornamental Onion
CCB	20	1 Gal.	Coreopsis 'Crème Brulee'	Crème Brulee Tickseed
HMPP	3	1 Gal.	I	Palace Purple Coralbells
HRR	17	1 Gal.	Hemerocallis 'Rosy Returns'	Rosy Returns Daylily
NFBW	10	1 Gal.	Nepeta faassenii 'Blue Wonder'	Blue Wonder Catmint
SXSMN	12	1 Gal.	Salvia x suberba 'May Night'	May Night Sage

CODE	QTY	SIZE	BOTANIC NAME	COMMON NAME
ROWHOME BUILDING #10				
Evergreen Trees - Fastigate				
TOT	3	8' high	Thuja occidentalis 'Techny'	Mission Arborvitae
Deciduous Shrubs - Large				
HPL	1	#7 Cont. / 36"	Hydrangea paniculata 'Limelight'	Limelight Hydrangea
VC	3	#7 Cont. / 36"	Viburnum carlesii	Koreanspice Viburnum
VDJA	1	36" high	Viburnum dentatum 'Autumn Jazz'	Autumn Jazz Arrowwood Viburnum
Deciduous Shrubs - Medium to Small				
AMIB	3	5 Gal./24"	Aronia melanocarpa 'Iroquois Beauty'	Iroquois Beauty Black Chokeberry
SXP	2	#5 Cont. / 30"	Syringa x 'Penda'	Bloomerang Lilac
SAW	8	#3 Cont. / 24"	Spiraea bumalda 'Anthony Waterer'	Anthony Waterer Bumald Spirea
HPB	18	#5 Cont. / 30"	Hydrangea paniculata 'Bobo'	Bobo Hydrangea
Evergreen Shrubs				
BGM	6	36" high	Buxus x 'Green Mountain'	Green Mountain Boxwood
TGW	20	24" wide	Taxus cuspidata 'Green Wave'	Green Wave Japanese Yew
JCK	1	#5 Cont.	Coreopsis 'Crème Brulee'	Kallay Compact Chinese Juniper
Ornamental Grasses				
CAKF/3	9	3 Gal.	Calamagrostis acutiflora 'Karl Foerster'	Karl Foerster Feather Reed Grass
PAH/3	2	3 Gal.	Pennisetum alopecuroides 'Hameln'	Dwarf Fountain Grass
PVN/3	10	3 Gal.	Panicum virgatum 'Northwind'	Northwind Switch Grass
Perennials				
ASB	20	1 Gal.	Allium 'Summer Beauty'	Summer Beauty Ornamental Onion
CCB	20	1 Gal.	Coreopsis 'Crème Brulee'	Crème Brulee Tickseed
HRR	8	1 Gal.	Hemerocallis 'Happy Returns'	Happy Returns Daylily
HMPP	9	1 Gal.	Heuchera micrantha 'Palace Purple'	Palace Purple Coralbells
HRR	9	1 Gal.	Hemerocallis 'Rosy Returns'	Rosy Returns Daylily
SXSMN	16	1 Gal.	Salvia x suberba 'May Night'	May Night Sage

ISSUE DATE: 07-27-2025	
REVISIONS	
02/25/2025	1 City Comments
04/10/2025	2 City Comments
07/23/2025	3 City Comments
08/29/2025	4 City Comments
09/23/2025	5 City Comments

The Residences
at Naper and Plank

Plank Rd./Tuthill Rd./Burlington Ave./ Naper Blvd.
Naperville, Illinois

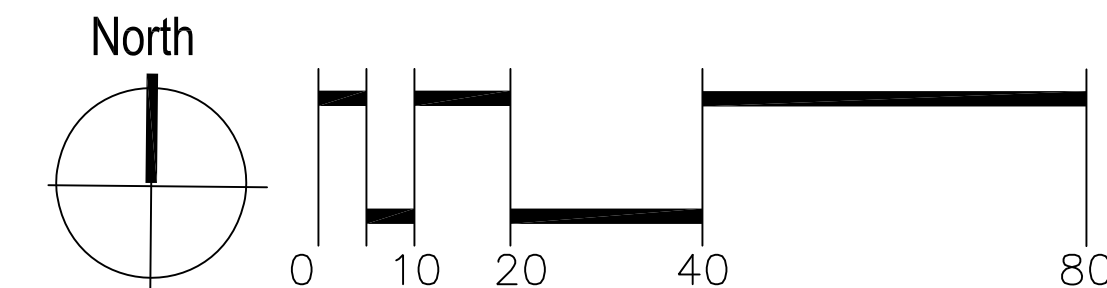
Lincoln Property Company

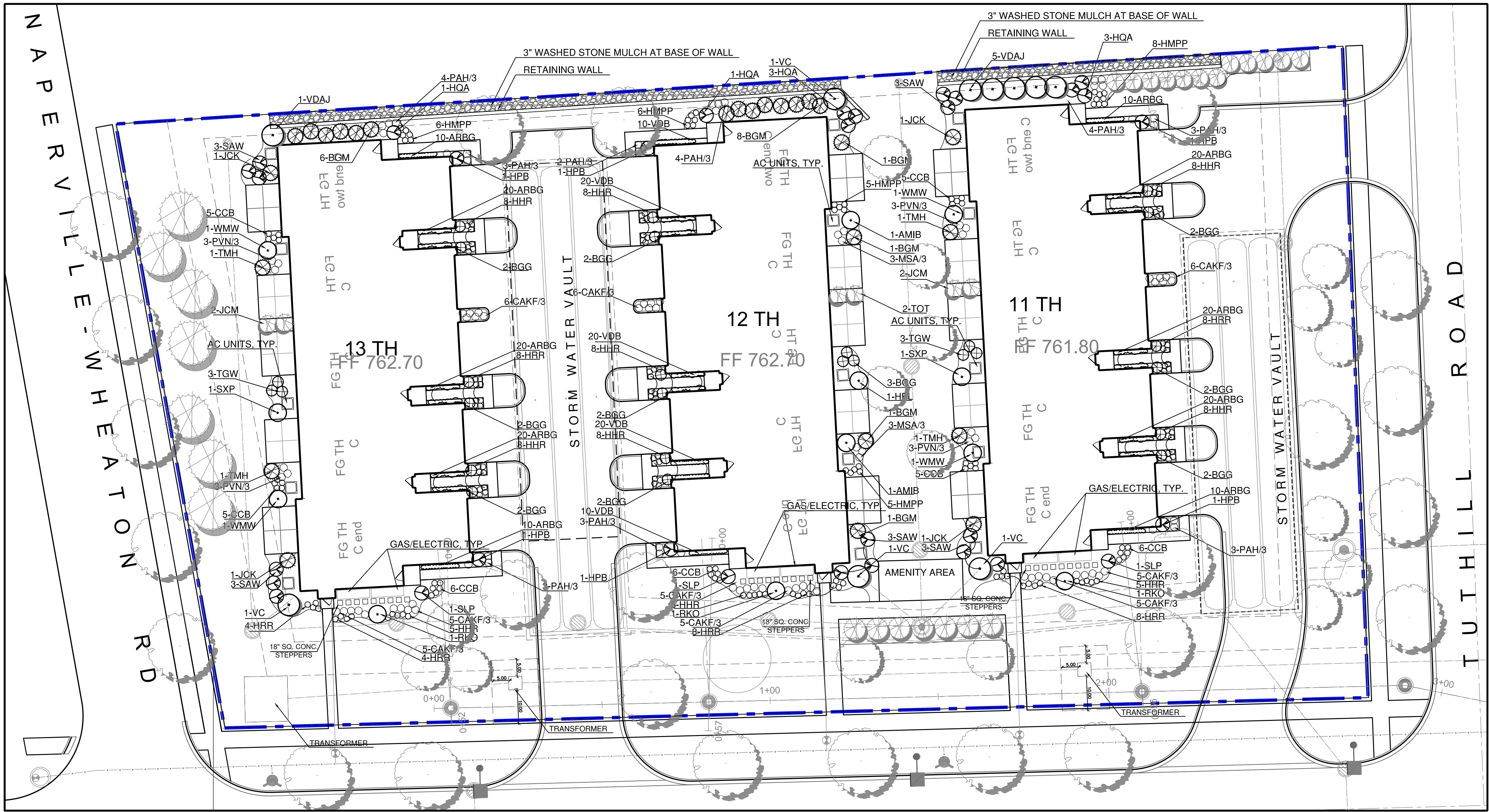
120 North LaSalle Street
Chicago, IL 60602
312-345-8789



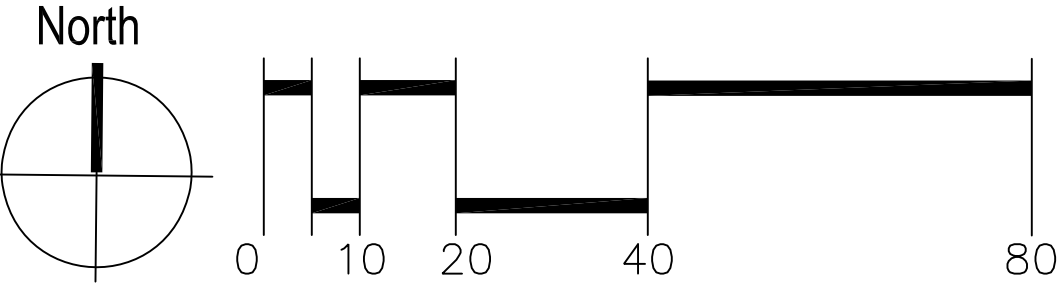
220 N. Smith Street Suite 210
Palatine, Illinois 60067
847.705.2200

JOB NO: -- PROJ MGR: TS
DRAWN: TJS CHECKED: --
FOUNDATION LANDSCAPE PLAN
AREA THREE





Area Five: Typical Landscape Foundation Plans-
Town Home Buildings 11, 12, 13



CODE	QTY	SIZE	BOTANIC NAME	COMMON NAME
TOWNHOME BUILDING #11				
Evergreen Trees - Fastigate				
JCM	2	8' high	Juniperus chinensis 'Mountbatten'	Mountbatten Juniper
Deciduous Shrubs - Large				
HQA	3	#7 Cont. / 36"	Hydrangea quercifolia 'Alice'	Alice Oakleaf Hydrangea
VC	1	#7 Cont. / 36"	Viburnum carlesii	Koreanspice Viburnum
VDAJ	5	#7 Cont. / 36"	Viburnum dentatum 'Autumn Jazz'	Autumn Jazz Arrowwood Viburnum
Deciduous Shrubs - Medium to Small				
HPB	2	#5 Cont. / 30"	Hydrangea Paniculata 'Bobo'	Bobo Hydrangea
RKO	1	#5 Cont. / 30"	Rosa 'Knock Out'	Sunny Knock Out Rose
SAW	6	#3 Cont. / 24"	Spiraea bumalda 'Anthony Waterer'	Anthony Waterer Bumald Spirea
SLP	1	#3 Cont. / 24"	Spiraea japonica 'Little Princess'	Little Princess Japanese Spirea
SXP	1	#5 Cont. / 30"	Syringa x 'Penda'	Bloomerang Lilac
WMW	2	#3 Cont. / 24"	Weigela florida 'Midnight Wine'	Midnight Wine Weigela
Evergreen Shrubs				
BGG	6	24" wide	Buxus x 'Green Gem'	Green Gem Boxwood
BGM	4	36" high	Buxus x 'Green Mountain'	Green Mountain Boxwood
JCK	2	#5 Cont.	Juniperus chinensis 'Kallay'	Kallay Compact Chinese Juniper
TGW	3	24" wide	Taxus cuspidata 'Green Wave'	Green Wave Japanese Yew
TMH	2	36" wide	Taxus x media 'Hicksii'	Hicks Intermediate Yew
Ornamental Grasses				
CAKF/3	16	3 Gal.	Calamagrostis acutiflora 'Karl Foerster'	Karl Foerster Feather Reed Grass
PAH/3	10	3 Gal.	Pennisetum alopecuroides 'Hamel'	Dwarf Fountain Grass
PVN/3	6	3 Gal.	Panicum virgatum 'Northwind'	Northwind Switch Grass
Perennials				
ASB	6	1 Gal.	Allium 'Summer Beauty'	Summer Beauty Ornamental Onion
CCB	16	1 Gal.	Coreopsis 'Crème Brulee'	Crème Brulee Tickseed
HHR	23	1 Gal.	Hemerocallis 'Happy Returns'	Happy Returns Daylily
HMPP	8	1 Gal.	Heuchera micrantha 'Palace Purple'	Palace Purple Coralbells
HRR	22	1 Gal.	Hemerocallis 'Rosy Returns'	Rosy Returns Daylily
NFBW	12	1 Gal.	Nepeta faassenii 'Blue Wonder'	Blue Wonder Catmint
SXSMN	6	1 Gal.	Salvia x suberba 'May Night'	May Night Sage
Groundcovers				
ARBG	80	1 Qt.	Ajuga reptans 'Burgundy Glow'	Burgundy Glow Bugleweed

CODE	QTY	SIZE	BOTANIC NAME	COMMON NAME
TOWNHOME BUILDING #12				
Evergreen Trees - Fastigate				
TOT	2	8' high	Thuja occidentalis 'Techny'	Mission Arborvitae
Deciduous Shrubs - Large				
HPL	1	#7 Cont. / 36"	Hydrangea paniculata 'LimeLight'	LimeLight Hydrangea
HQA	4	#7 Cont. / 36"	Hydrangea quercifolia 'Alice'	Alice Oakleaf Hydrangea
VC	2	#7 Cont. / 36"	Viburnum carlesii	Koreanspice Viburnum
Deciduous Shrubs - Medium to Small				
AMIB	2	#5 Cont. / 30"	Aronia melanocarpa 'Morton'	Iroquois Beauty Black Chokeberry
HPB	2	#5 Cont. / 30"	Hydrangea Paniculata 'Bobo'	Bobo Hydrangea
RKO	1	#5 Cont. / 30"	Rosa 'Knock Out'	Sunny Knock Out Rose
SAW	3	#3 Cont. / 24"	Spiraea bumalda 'Anthony Waterer'	Anthony Waterer Bumald Spirea
SLP	1	#3 Cont. / 24"	Spiraea japonica 'Little Princess'	Little Princess Japanese Spirea
Evergreen Shrubs				
BGG	9	24" wide	Buxus x 'Green Gem'	Green Gem Boxwood
BGM	12	36" high	Buxus x 'Green Mountain'	Green Mountain Boxwood
Ornamental Grasses				
CAKF/3	16	3 Gal.	Calamagrostis acutiflora 'Karl Foerster'	Karl Foerster Feather Reed Grass
MSA/3	6	3 Gal.	Miscanthus sinensis 'Adagio'	Adagio Dwarf Maiden Grass
PAH/3	10	3 Gal.	Pennisetum alopecuroides 'Hamel'	Dwarf Fountain Grass
Perennials				
ASB	6	1 Gal.	Allium 'Summer Beauty'	Summer Beauty Ornamental Onion
CCB	6	1 Gal.	Coreopsis 'Crème Brulee'	Crème Brulee Tickseed
HHR	37	1 Gal.	Hemerocallis 'Happy Returns'	Happy Returns Daylily
HMPP	16	1 Gal.	Heuchera micrantha 'Palace Purple'	Palace Purple Coralbells
HRR	4	1 Gal.	Hemerocallis 'Rosy Returns'	Rosy Returns Daylily
NFBW	18	1 Gal.	Nepeta faassenii 'Blue Wonder'	Blue Wonder Catmint
Groundcovers				
VDB	80	1 Flat	Vinca minor 'Dart's Blue'	Dart's Blue Periwinkle
Materials				
-	3	C.Y.	-	Soil Amendments
-	8	C.Y.	-	Shredded Hardwood Mulch
-	10	C.Y.	-	Splash Blocks

CODE	QTY	SIZE	BOTANIC NAME	COMMON NAME
TOWNHOME BUILDING #13				
Evergreen Trees - Fastigate				
JCM	2	8' high	Juniperus chinensis 'Mountbatten'	Mountbatten Juniper
Deciduous Shrubs - Large				
HQA	1	#7 Cont. / 36"	Hydrangea quercifolia 'Alice'	Alice Oakleaf Hydrangea
VC	1	#7 Cont. / 36"	Viburnum carlesii	Koreanspice Viburnum
VDAJ	1	#7 Cont. / 36"	Viburnum dentatum 'Autumn Jazz'	Autumn Jazz Arrowwood Viburnum
Deciduous Shrubs - Medium to Small				
HPB	2	#5 Cont. / 30"	Hydrangea Paniculata 'Bobo'	Bobo Hydrangea
RKO	1	#5 Cont. / 30"	Rosa 'Knock Out'	Sunny Knock Out Rose
SAW	6	#3 Cont. / 24"	Spiraea bumalda 'Anthony Waterer'	Anthony Waterer Bumald Spirea
SLP	1	#3 Cont. / 24"	Spiraea japonica 'Little Princess'	Little Princess Japanese Spirea
SXP	1	#5 Cont. / 30"	Syringa x 'Penda'	Bloomerang Lilac
WMW	2	#3 Cont. / 24"	Weigela florida 'Midnight Wine'	Midnight Wine Weigela
Evergreen Shrubs				
BGG	6	24" wide	Buxus x 'Green Gem'	Green Gem Boxwood
BGM	6	36" high	Buxus x 'Green Mountain'	Green Mountain Boxwood
JCK	2	#5 Cont.	Juniperus chinensis 'Kallay'	Kallay Compact Chinese Juniper
TGW	3	24" wide	Taxus cuspidata 'Green Wave'	Green Wave Japanese Yew
TMH	2	36" wide	Taxus x media 'Hicksii'	Hicks Intermediate Yew
Ornamental Grasses				
CAKF/3	16	3 Gal.	Calamagrostis acutiflora 'Karl Foerster'	Karl Foerster Feather Reed Grass
PAH/3	10	3 Gal.	Pennisetum alopecuroides 'Hamel'	Dwarf Fountain Grass
PVN/3	6	3 Gal.	Panicum virgatum 'Northwind'	Northwind Switch Grass
Perennials				
ASB	6	1 Gal.	Allium 'Summer Beauty'	Summer Beauty Ornamental Onion
CCB	16	1 Gal.	Coreopsis 'Crème Brulee'	Crème Brulee Tickseed
HHR	37	1 Gal.	Hemerocallis 'Happy Returns'	Happy Returns Daylily
HMPP	6	1 Gal.	Heuchera micrantha 'Palace Purple'	Palace Purple Coralbells
NFBW	12	1 Gal.	Nepeta faassenii 'Blue Wonder'	Blue Wonder Catmint
SXSMN	6	1 Gal.	Salvia x suberba 'May Night'	May Night Sage
Groundcovers				
ARBG	80	1 Qt.	Ajuga reptans 'Burgundy Glow'	Burgundy Glow Bugleweed

ISSUE DATE: 07-27-2025	REVISIONS	
	07/25/2025	1 City Comments
	04/17/2025	2 City Comments
	07/13/2025	2 City Comments
	04/23/2025	2 City Comments
THIS PLAN AND ALL ATTACHED PLANS AND SPECIFICATIONS ARE THE SOLE PROPERTY OF BSB DESIGN, INC. AND ARE NOT TO BE REPRODUCED OR USED IN ANY MANNER WITHOUT THE WRITTEN PERMISSION OF BSB DESIGN, INC. ALL RIGHTS ARE RESERVED.		

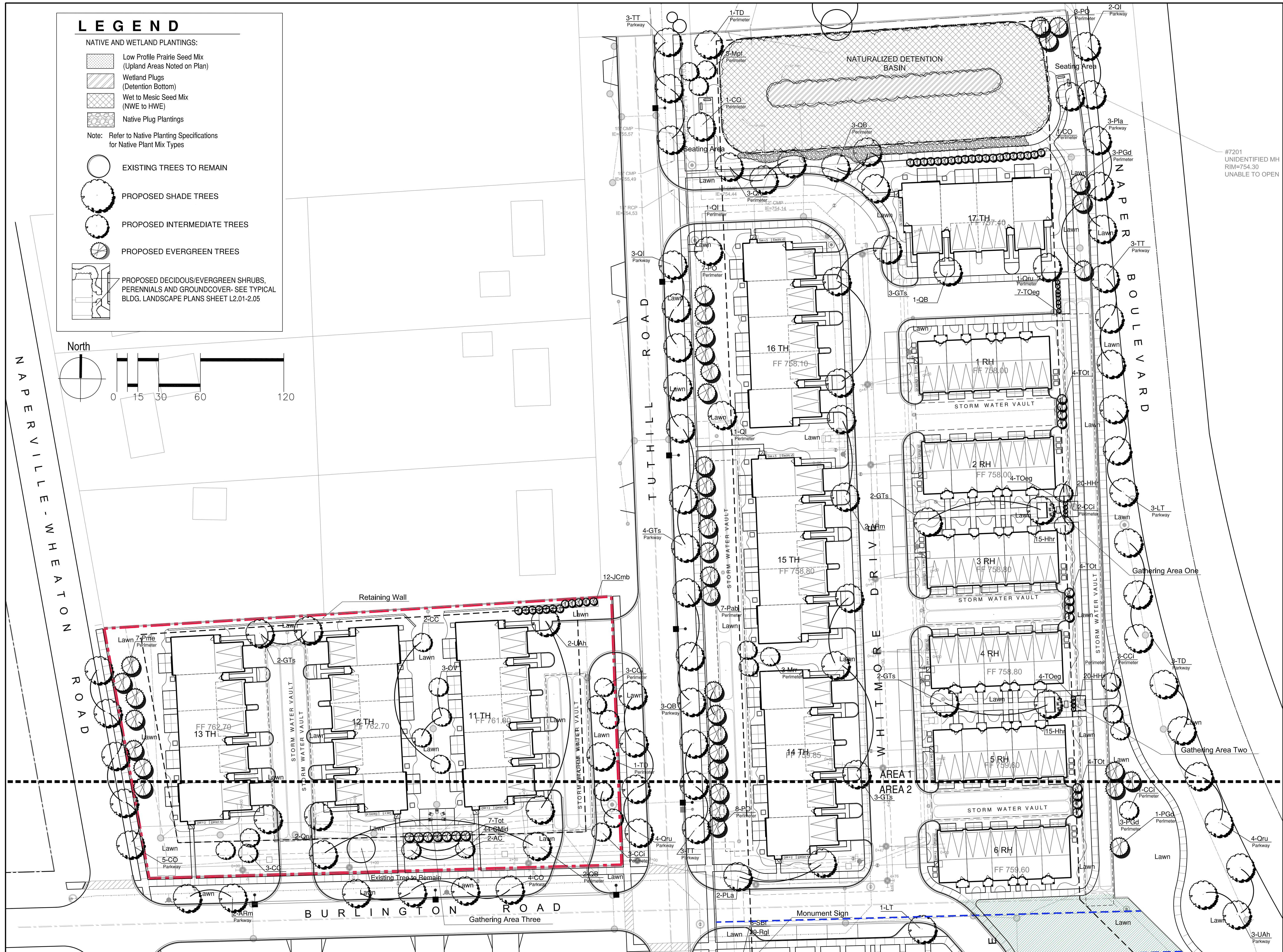
Lincoln Property Company
120 North LaSalle Street
Chicago, IL 60602
312-345-8789

The Residences
at Naper and Plank
Plank Rd./Tutthill Rd./Burlington Ave./ Naper Blvd.
Naperville, Illinois



220 N. Smith Street Suite 210
Palatine, Illinois 60067
847.705.2200

JOB NO: -- PROJ MGR: TS
DRAWN: TJS CHECKED: --
FOUNDATION LANDSCAPE PLAN
AREA FIVE



ISSUE DATE: 07-27-2025	
REVISIONS	
07/25/2025	1 City Comments
04/17/2025	2 City Comments
07/17/2025	3 City Comments
04/09/2025	4 City Comments
04/09/2025	5 City Comments

Lincoln Property Company
120 North LaSalle Street
Chicago, IL 60602
312-345-8789

The Residences at Naper and Plank

Plank Rd./Tuthill Rd./Burlington Ave./ Naper Blvd.
Naperville, Illinois



220 N. Smith Street Suite 210
Palatine, Illinois 60067
847.705.2200

JOB NO: -- PROJ MGR: TS
DRAWN: TJS CHECKED: --
COMMON AREA LANDSCAPE PLAN
AREA ONE

L2.06



EXHIBIT C

ISSUE DATE: 07-27-2025	
REVISIONS	
07/25/2025	1 City Comments
04/17/2025	1 City Comments
07/23/2025	1 City Comments
07/23/2025	1 City Comments
04/23/2025	1 City Comments
04/23/2025	1 City Comments

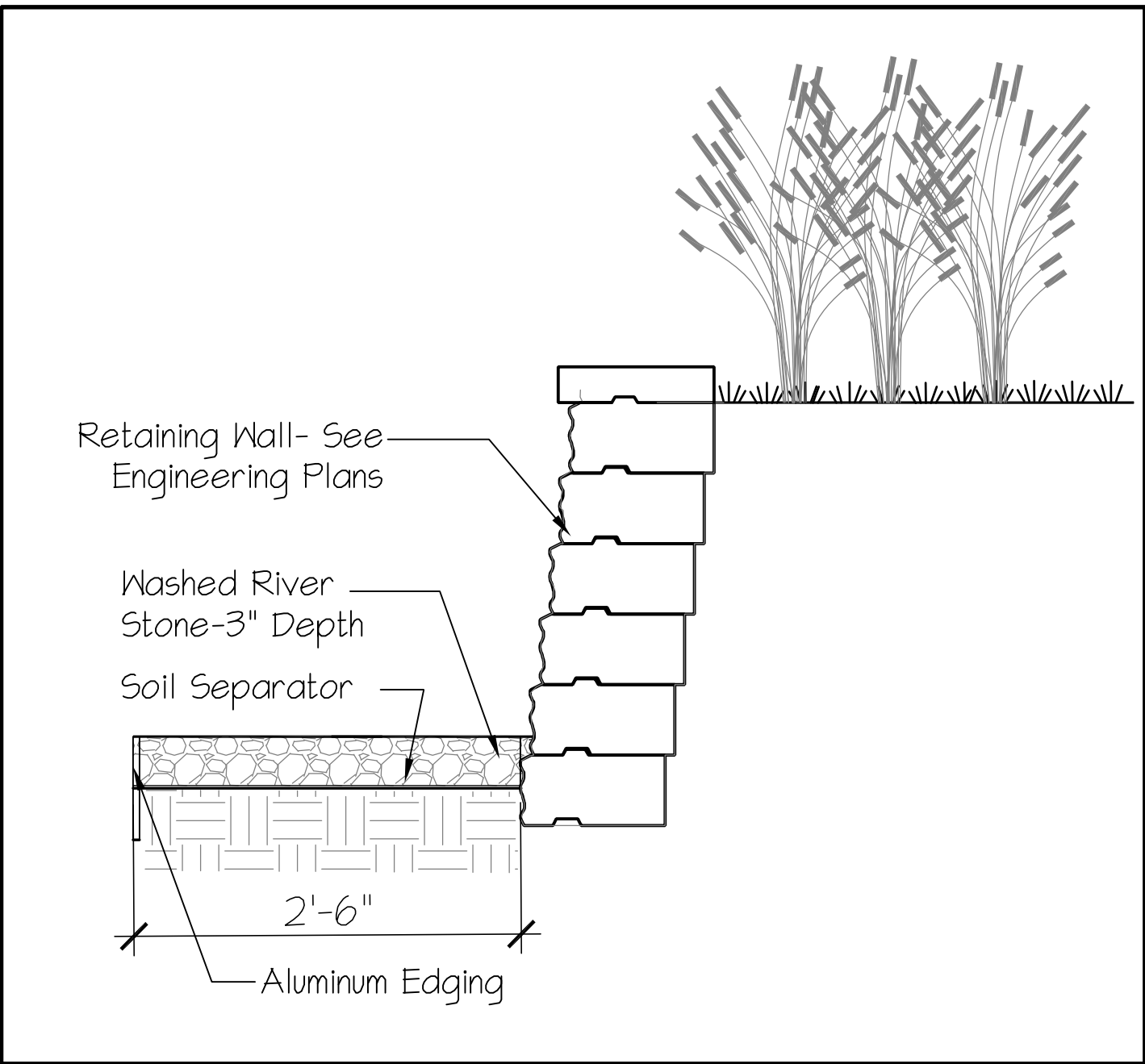
Lincoln Property Company
120 North LaSalle Street
Chicago, IL 60602
312-345-8789

**The Residences
at Naper and Plank**
Plank Rd./Tuthill Rd./Burlington Ave./ Naper Blvd.
Naperville, Illinois

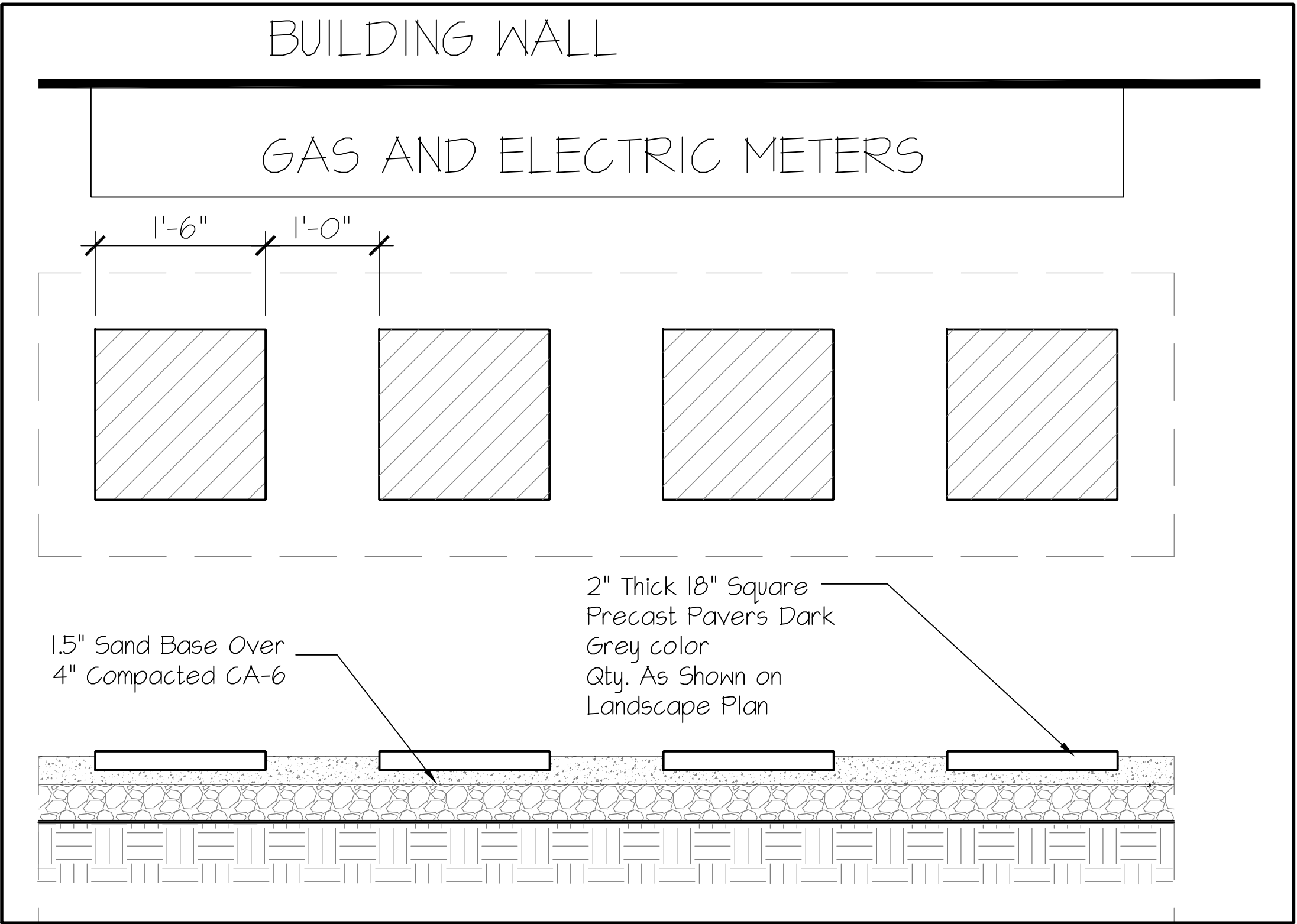


220 N. Smith Street Suite 210
Palatine, Illinois 60067
847 705 2200

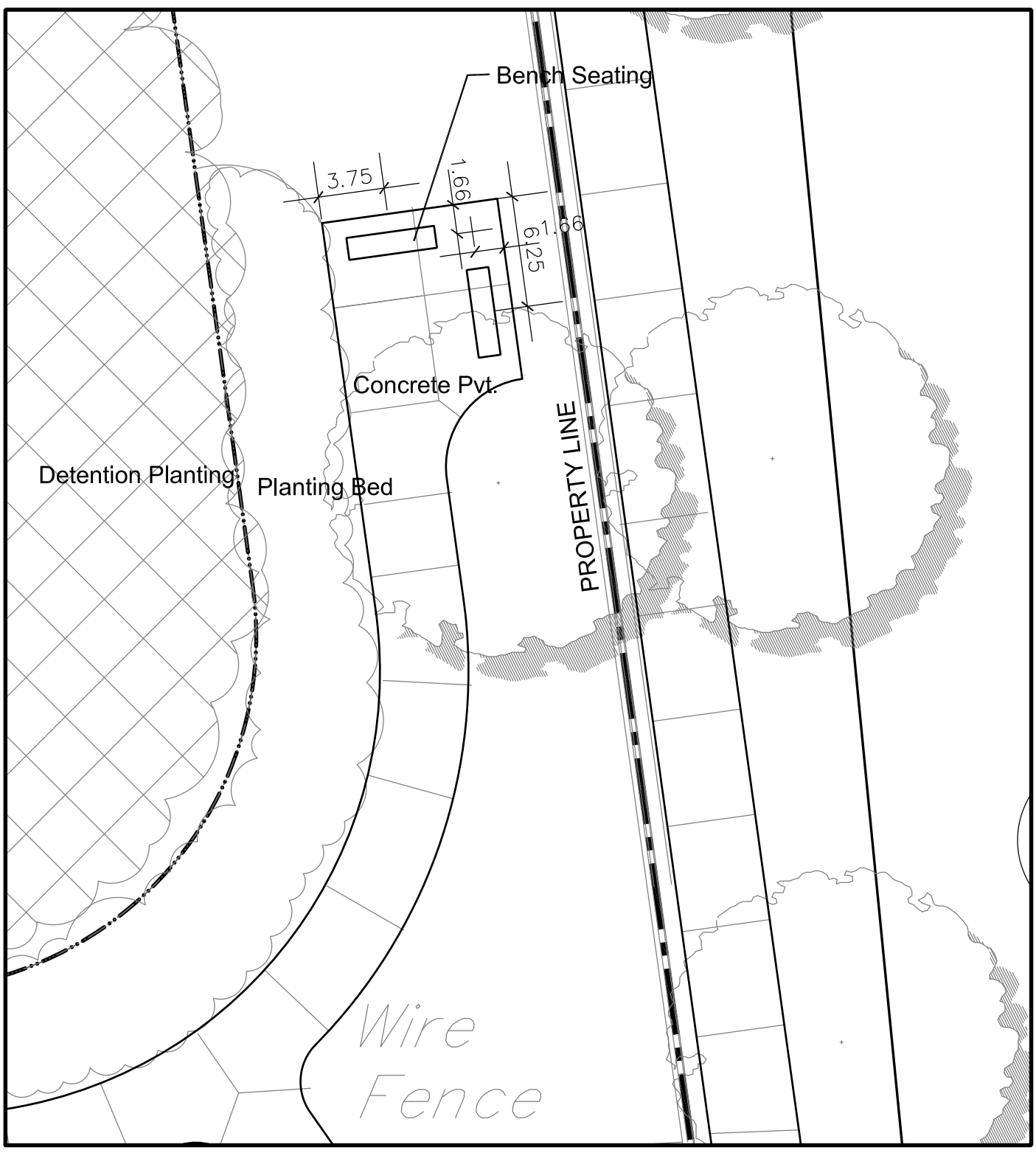
JOB NO: -- PROJ MGR: TS
DRAWN: TJS CHECKED: --
COMMON AREA LANDSCAPE PLAN
AREA TWO



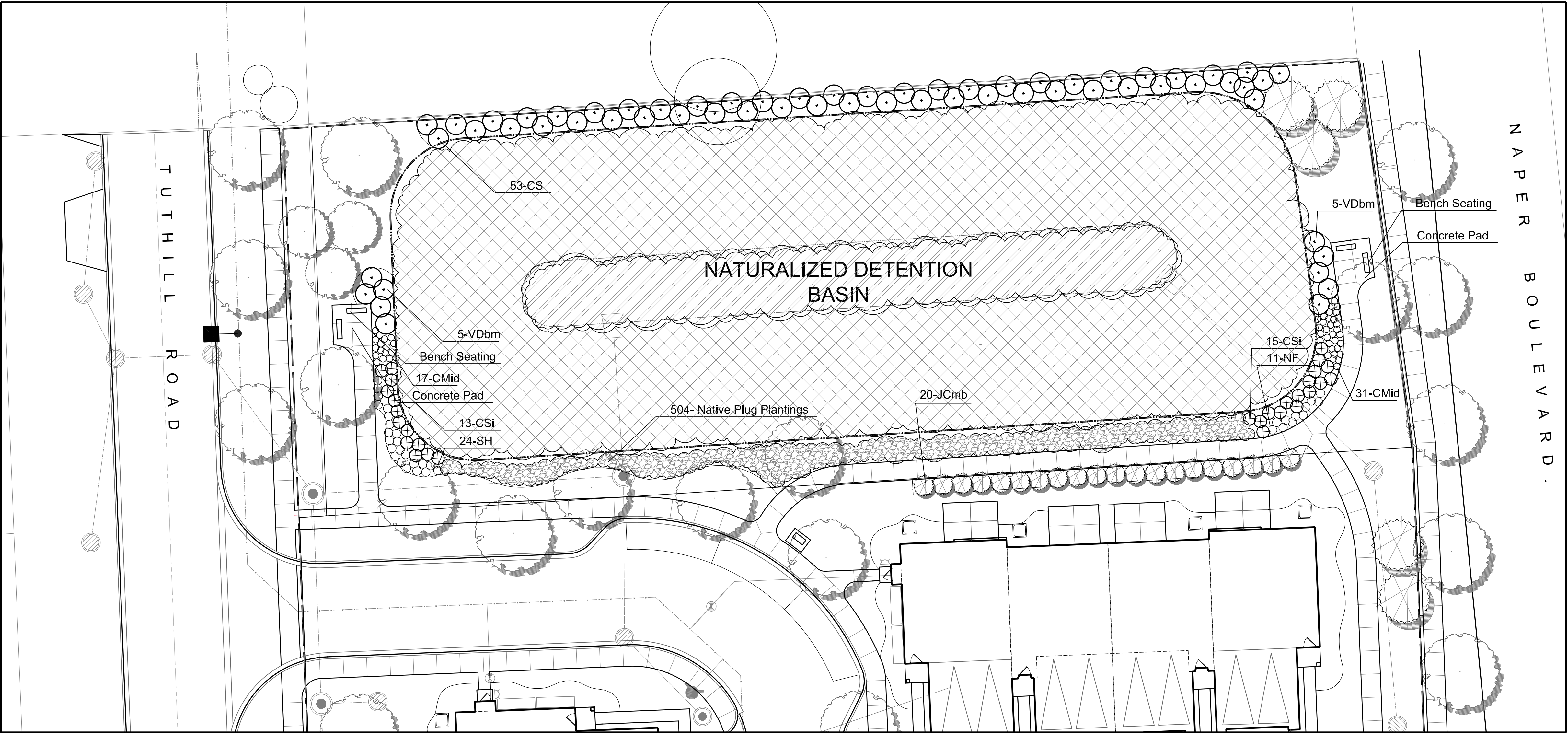
1 WASHED STONE EDGE
2.08 -- 1"=1'-0"



2 PRECAST STEPPERS
2.08 -- 1"=1'-0"



3 DET. SEATING AREA
2.08 TWO LOCATIONS 1/8"=1'-0"



4 DETENTION AREA PARK
2.08 -- 1/16"=1'-0"

LEGEND

NATIVE AND WETLAND PLANTINGS:

- Low Profile Prairie Seed Mix (Upland Areas Noted on Plan)
- Wetland Plugs (Detention Bottom)
- Wet to Mesic Seed Mix (NWE to HWE)
- Native Plug Plantings

Note: Refer to Native Planting Specifications for Native Plant Mix Types

- EXISTING TREES TO REMAIN
- PROPOSED SHADE TREES
- PROPOSED INTERMEDIATE TREES
- PROPOSED EVERGREEN TREES
- PROPOSED DECIDUOUS/EVERGREEN SHRUBS, PERENNIALS AND GROUNDCOVER- SEE TYPICAL BLDG. LANDSCAPE PLANS SHEET L2.01-2.05

ISSUE DATE: 07-27-2025	
REVISIONS	
02/25/2025	1 City Comments
04/17/2025	2 City Comments
07/23/2025	3 City Comments
07/23/2025	4 City Comments
07/23/2025	5 City Comments
07/23/2025	6 City Comments
07/23/2025	7 City Comments
07/23/2025	8 City Comments
07/23/2025	9 City Comments
07/23/2025	10 City Comments
07/23/2025	11 City Comments
07/23/2025	12 City Comments
07/23/2025	13 City Comments
07/23/2025	14 City Comments
07/23/2025	15 City Comments
07/23/2025	16 City Comments
07/23/2025	17 City Comments
07/23/2025	18 City Comments
07/23/2025	19 City Comments
07/23/2025	20 City Comments
07/23/2025	21 City Comments
07/23/2025	22 City Comments
07/23/2025	23 City Comments
07/23/2025	24 City Comments
07/23/2025	25 City Comments
07/23/2025	26 City Comments
07/23/2025	27 City Comments
07/23/2025	28 City Comments
07/23/2025	29 City Comments
07/23/2025	30 City Comments
07/23/2025	31 City Comments
07/23/2025	32 City Comments
07/23/2025	33 City Comments
07/23/2025	34 City Comments
07/23/2025	35 City Comments
07/23/2025	36 City Comments
07/23/2025	37 City Comments
07/23/2025	38 City Comments
07/23/2025	39 City Comments
07/23/2025	40 City Comments
07/23/2025	41 City Comments
07/23/2025	42 City Comments
07/23/2025	43 City Comments
07/23/2025	44 City Comments
07/23/2025	45 City Comments
07/23/2025	46 City Comments
07/23/2025	47 City Comments
07/23/2025	48 City Comments
07/23/2025	49 City Comments
07/23/2025	50 City Comments
07/23/2025	51 City Comments
07/23/2025	52 City Comments
07/23/2025	53 City Comments
07/23/2025	54 City Comments
07/23/2025	55 City Comments
07/23/2025	56 City Comments
07/23/2025	57 City Comments
07/23/2025	58 City Comments
07/23/2025	59 City Comments
07/23/2025	60 City Comments
07/23/2025	61 City Comments
07/23/2025	62 City Comments
07/23/2025	63 City Comments
07/23/2025	64 City Comments
07/23/2025	65 City Comments
07/23/2025	66 City Comments
07/23/2025	67 City Comments
07/23/2025	68 City Comments
07/23/2025	69 City Comments
07/23/2025	70 City Comments
07/23/2025	71 City Comments
07/23/2025	72 City Comments
07/23/2025	73 City Comments
07/23/2025	74 City Comments
07/23/2025	75 City Comments
07/23/2025	76 City Comments
07/23/2025	77 City Comments
07/23/2025	78 City Comments
07/23/2025	79 City Comments
07/23/2025	80 City Comments
07/23/2025	81 City Comments
07/23/2025	82 City Comments
07/23/2025	83 City Comments
07/23/2025	84 City Comments
07/23/2025	85 City Comments
07/23/2025	86 City Comments
07/23/2025	87 City Comments
07/23/2025	88 City Comments
07/23/2025	89 City Comments
07/23/2025	90 City Comments
07/23/2025	91 City Comments
07/23/2025	92 City Comments
07/23/2025	93 City Comments
07/23/2025	94 City Comments
07/23/2025	95 City Comments
07/23/2025	96 City Comments
07/23/2025	97 City Comments
07/23/2025	98 City Comments
07/23/2025	99 City Comments
07/23/2025	100 City Comments

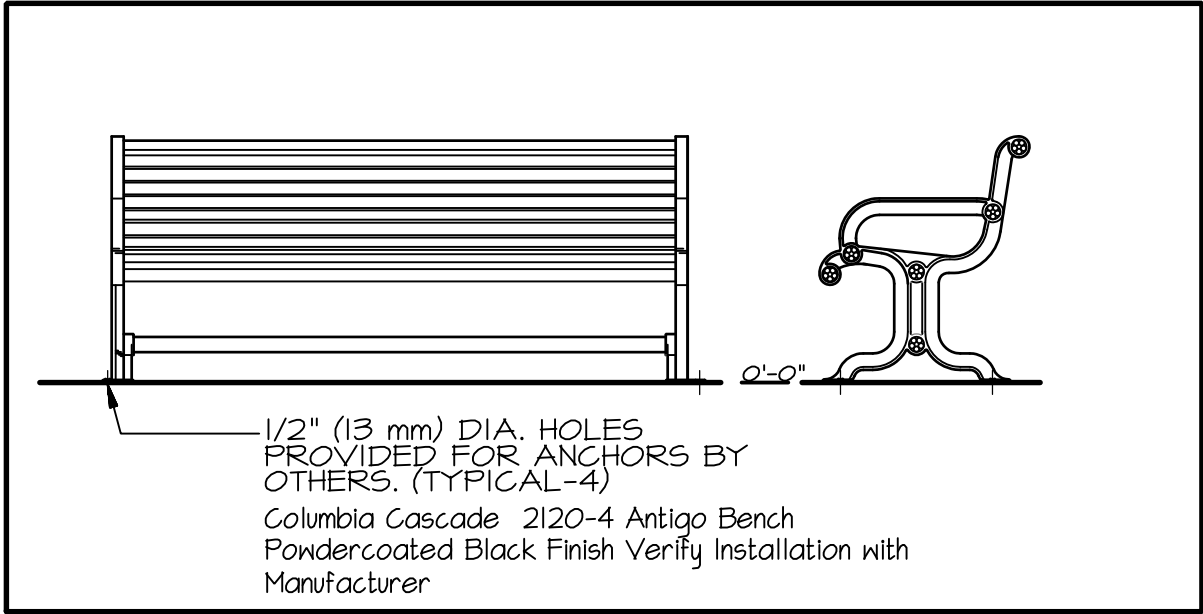
Lincoln Property Company
120 North LaSalle Street
Chicago, IL 60602
312-345-8789

The Residences
at Naper and Plank
Plank Rd./Tutthill Rd./Burlington Ave./ Naper Blvd.
Naperville, Illinois

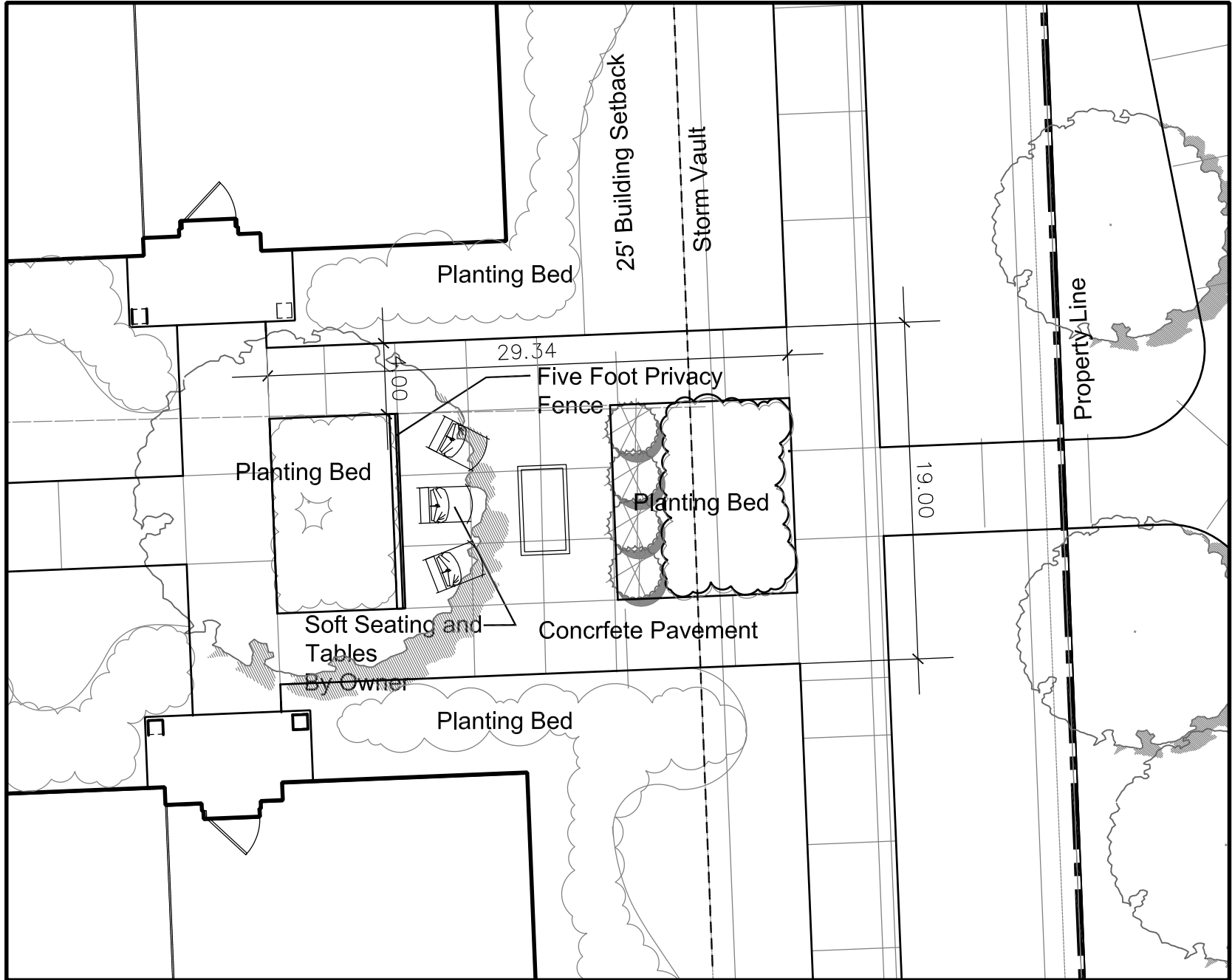


220 N. Smith Street Suite 210
Palatine, Illinois 60067
847 705 2200

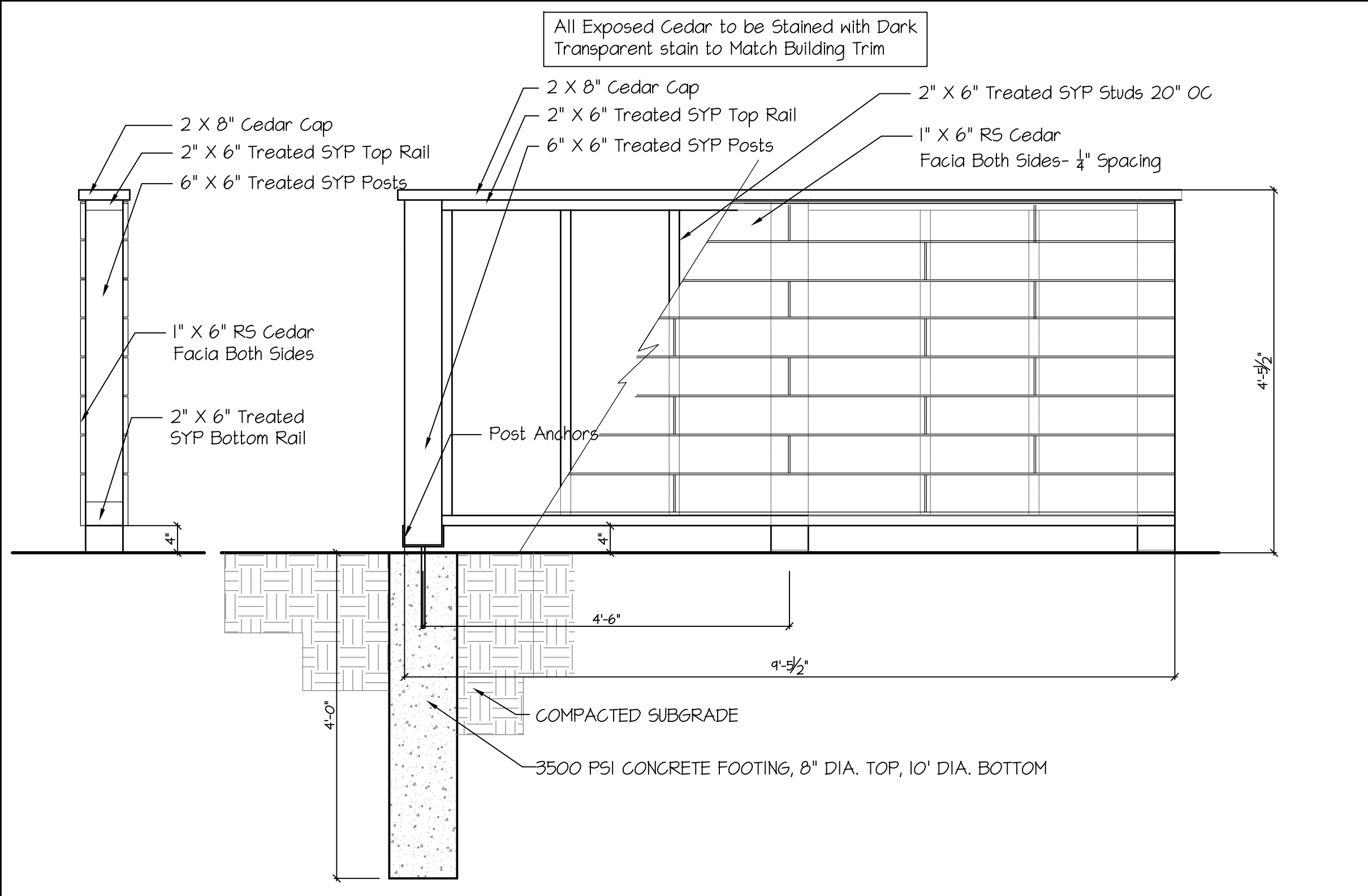
JOB NO: -- PROJ MGR: TS
DRAWN: TJS CHECKED: --
HARDSCAPE DETAILS



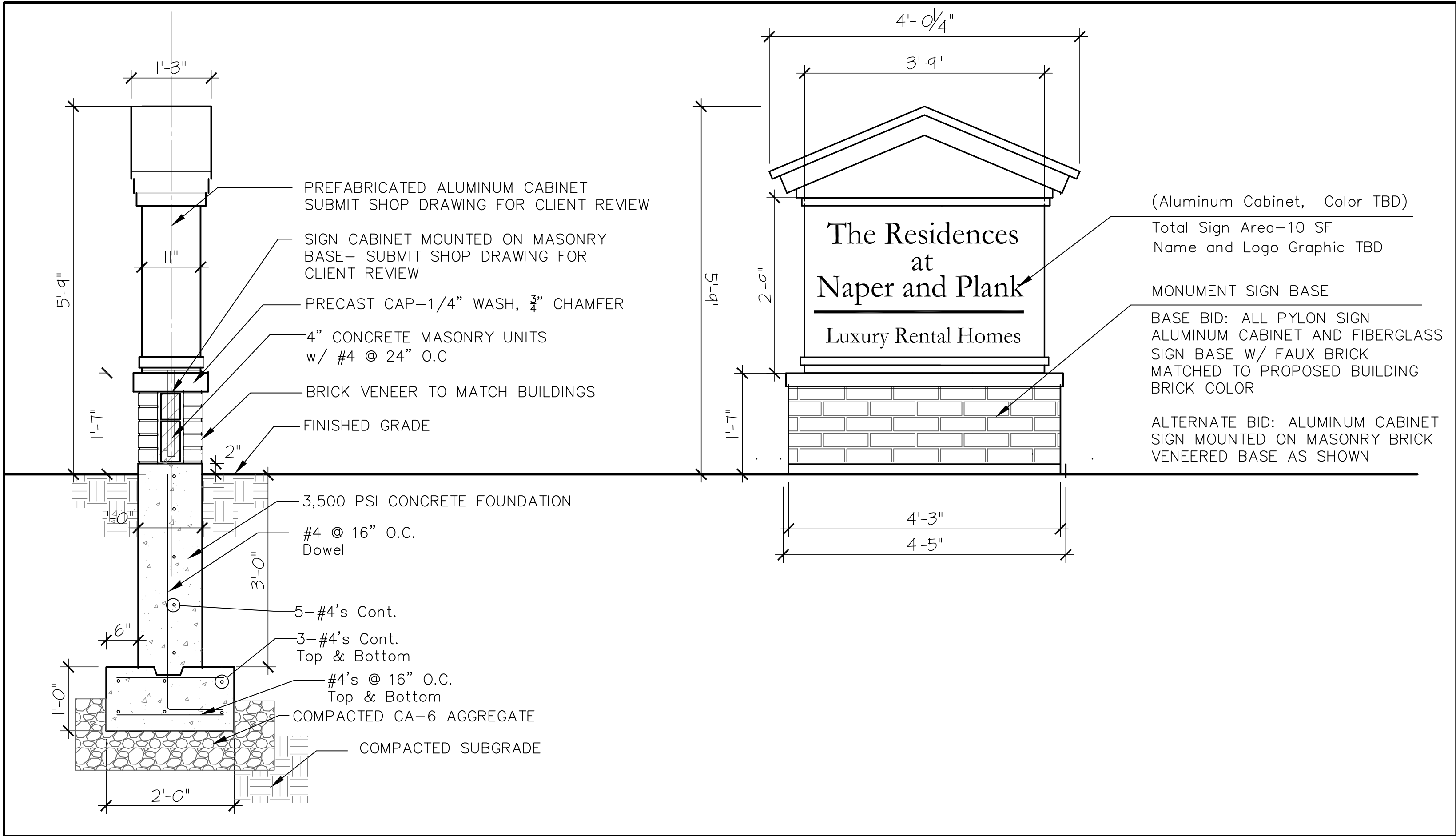
1 FOUR FOOT BENCH
2.09 -- 1 1/2"=1'-0"



3 GATHERING AREAS
2.09 THREE LOCATIONS 1/8"=1'-0"



4 GATHERING AREA FENCE
2.09 FOUR LOCATIONS 3/4"=1'-0"



2 MONUMENT SIGN
2.09 ONE SIGN LOCATION 3/4"=1'-0"

ISSUE DATE: 07-27-2025	
REVISIONS	
07/25/2025	1 City Comments
04/17/2025	1 City Comments
04/17/2025	1 City Comments
07/23/2025	1 City Comments
07/23/2025	1 City Comments
04/23/2025	1 City Comments
04/23/2025	1 City Comments

Lincoln Property Company

The Residences at Naper and Plank

Plank Rd./Tuthill Rd./Burlington Ave./ Naper Blvd.

Naperville, Illinois

120 North LaSalle Street
Chicago, IL 60602
312-345-8789



220 N. Smith Street Suite 210
Palatine, Illinois 60067
847 705 2200

JOB NO: -- PROJ MGR: TS
DRAWN: TJS CHECKED: --
HARDSCAPE DETAILS
SHEET TWO

