

MARY ANN STUBEL  
 3P  
 Will County Recorder  
 Will County  
 R 2002154083 Page 1 of 3  
 P2 Date 02/28/2002 Time 09:41:17  
 Recording Fees: \$8.00

FINAL PLAT OF SUBDIVISION

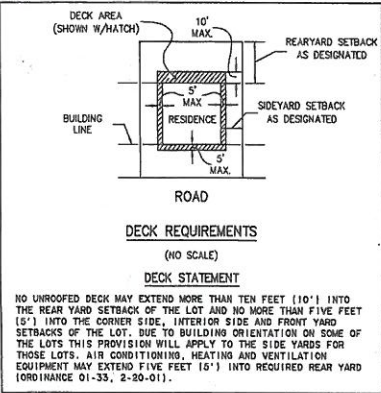
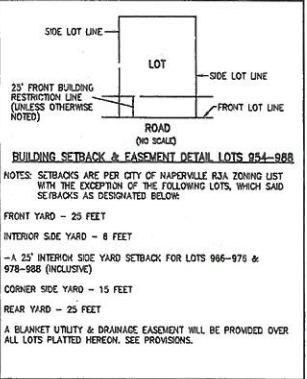
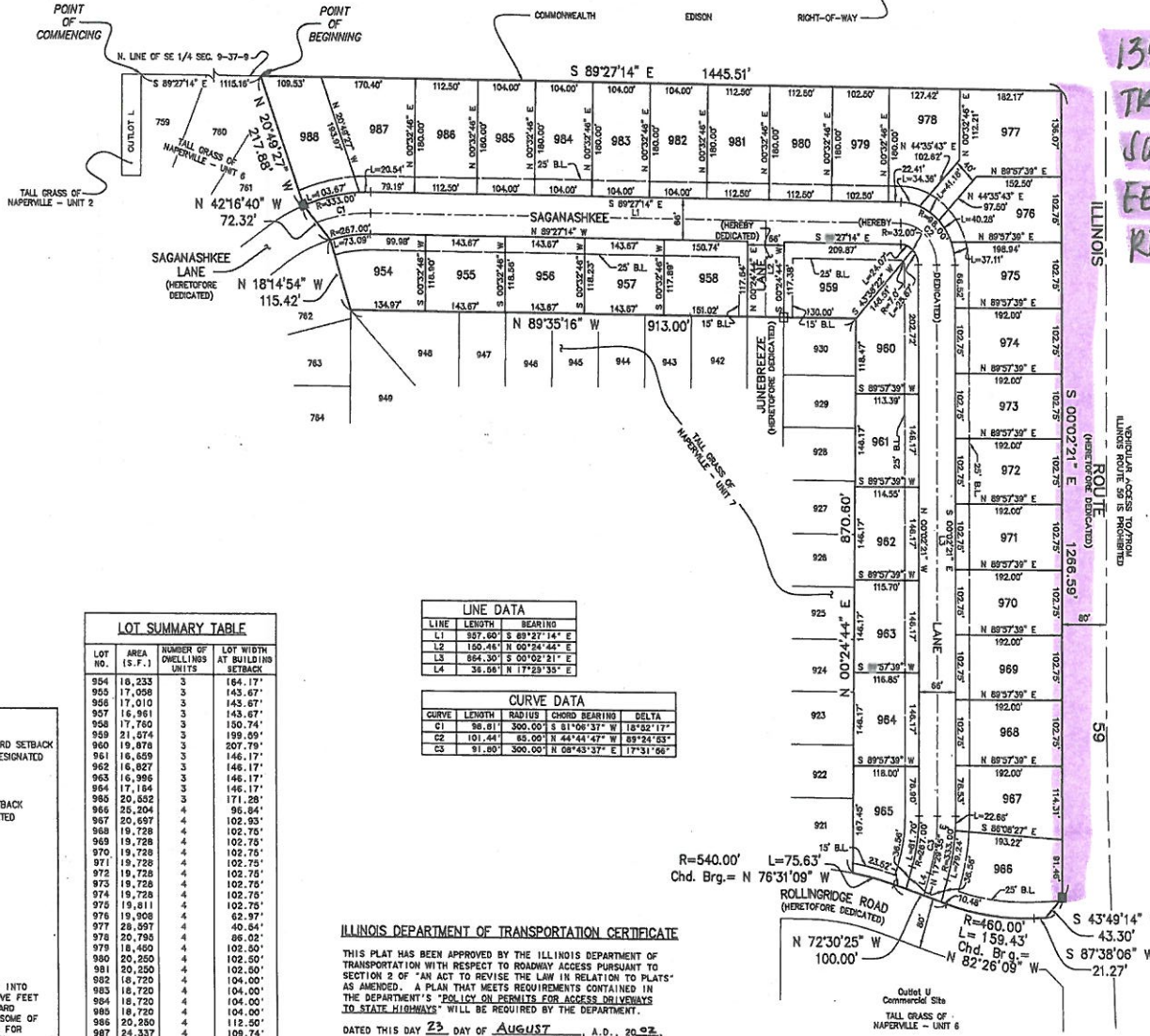
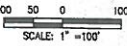
FOR

TALL GRASS OF NAPERVILLE - UNIT 8

BEING A PART OF THE SOUTHEAST QUARTER OF SECTION 9,  
 TOWNSHIP 37 NORTH, RANGE 9 EAST OF THE THIRD  
 PRINCIPAL MERIDIAN, IN WILL COUNTY, ILLINOIS.

THIS PLAT HAS BEEN SUBMITTED FOR  
 RECORDING BY AND RETURN TO:  
 NAME: NAPERVILLE CITY CLERK  
 ADDRESS: P.O. BOX 3020  
 400 S. EAGLE STREET  
 NAPERVILLE, IL  
 60566-7020

AREA SUMMARY  
 LOTS 954-998 = 16.816 Ac.  
 PROPOSED INTERIOR  
 RIGHT-OF-WAY = 3.436 Ac.  
 TOTAL = 19.282 Ac.  
 (More or Less)



| LOT SUMMARY TABLE |              |                          |                               |
|-------------------|--------------|--------------------------|-------------------------------|
| LOT NO.           | AREA (S. F.) | NUMBER OF DWELLING UNITS | LOT WIDTH AT BUILDING SETBACK |
| 954               | 16,233       | 3                        | 164.17'                       |
| 955               | 17,008       | 3                        | 143.67'                       |
| 956               | 17,010       | 3                        | 143.67'                       |
| 957               | 16,961       | 3                        | 143.67'                       |
| 958               | 17,760       | 3                        | 150.74'                       |
| 959               | 21,074       | 3                        | 199.89'                       |
| 960               | 19,878       | 3                        | 207.79'                       |
| 961               | 16,659       | 3                        | 146.17'                       |
| 962               | 16,827       | 3                        | 146.17'                       |
| 963               | 16,996       | 3                        | 146.17'                       |
| 964               | 17,164       | 3                        | 146.17'                       |
| 965               | 20,592       | 3                        | 171.28'                       |
| 966               | 26,204       | 4                        | 96.84'                        |
| 967               | 20,697       | 4                        | 102.35'                       |
| 968               | 19,728       | 4                        | 102.75'                       |
| 969               | 19,728       | 4                        | 102.75'                       |
| 970               | 19,728       | 4                        | 102.75'                       |
| 971               | 19,728       | 4                        | 102.75'                       |
| 972               | 19,728       | 4                        | 102.75'                       |
| 973               | 19,728       | 4                        | 102.75'                       |
| 974               | 19,728       | 4                        | 102.75'                       |
| 975               | 19,811       | 4                        | 102.75'                       |
| 976               | 19,808       | 4                        | 102.75'                       |
| 977               | 28,997       | 4                        | 40.84'                        |
| 978               | 20,795       | 4                        | 86.65'                        |
| 979               | 18,460       | 4                        | 102.50'                       |
| 980               | 20,250       | 4                        | 102.50'                       |
| 981               | 20,250       | 4                        | 102.50'                       |
| 982               | 18,720       | 4                        | 104.00'                       |
| 983               | 18,720       | 4                        | 104.00'                       |
| 984               | 18,720       | 4                        | 104.00'                       |
| 985               | 18,720       | 4                        | 104.00'                       |
| 986               | 20,280       | 4                        | 112.50'                       |
| 987               | 24,337       | 4                        | 109.74'                       |
| 988               | 25,727       | 4                        | 103.97'                       |

SUBDIVISION CONTAINS 35 LOTS AND 128 UNITS.

| LINE DATA |         |               |
|-----------|---------|---------------|
| LINE      | LENGTH  | BEARING       |
| L1        | 527.60' | S 89°27'14" E |
| L2        | 150.48' | N 60°24'44" E |
| L3        | 864.30' | S 00°02'21" E |
| L4        | 38.68'  | N 17°29'35" E |

| CURVE DATA |              |               |           |
|------------|--------------|---------------|-----------|
| CURVE      | CURVE LENGTH | CHORD BEARING | DELTA     |
| C1         | 98.81'       | S 81°06'37" W | 18°52'17" |
| C2         | 101.44'      | S 44°41'37" W | 89°24'03" |
| C3         | 91.80'       | N 08°43'37" E | 17°31'08" |

ILLINOIS DEPARTMENT OF TRANSPORTATION CERTIFICATE

THIS PLAT HAS BEEN APPROVED BY THE ILLINOIS DEPARTMENT OF TRANSPORTATION WITH RESPECT TO ROADWAY ACCESS PURSUANT TO SECTION 2 OF 'AN ACT TO REVISE THE LAW IN RELATION TO PLATS' AS AMENDED. A PLAN THAT MEETS REQUIREMENTS CONTAINED IN THE DEPARTMENT'S 'POLICY ON PERMITS FOR ACCESS DELIVERIES TO STATE HIGHWAYS' WILL BE REQUIRED BY THE DEPARTMENT.

DATED THIS DAY 23 DAY OF AUGUST, A.D., 2002.

John P. Kee  
 DISTRICT ENGINEER

1350' x 10'  
 TRADITIONAL  
 SOLID CEDAR  
 FENCE  
 REPLACEMENT.

NOTES

3/4" INCH IRON PIPE SET AT ALL LOT CORNERS AND POINTS OF CURVATURE UNLESS OTHERWISE NOTED.

ALL MEASUREMENTS ARE SHOWN IN FEET AND DECIMAL PARTS THEREOF.

DIMENSIONS SHOWN ALONG CURVES ARE ARC DISTANCES.

B.L. - INDICATES BUILDING LINE SETBACK

ALL EASEMENTS SHOWN & NOTED HEREON ARE HEREBY GRANTED UNLESS NOTED OTHERWISE.

BLANKET EASEMENT HEREBY GRANTED OVER ALL LOTS PLATTED HEREON. SEE PROVISIONS ON SHEET 2.

THE BEARINGS SHOWN HEREON ARE BASED ON THE NORTH LINE OF THE FINAL SUBDIVISION PLAT FOR TALL GRASS OF NAPERVILLE UNIT 7 BEING S 89°27'14" E. (ASSUMED).

SUBDIVISION LANDSCAPING TO BE INSTALLED IN ACCORDANCE WITH THE REQUIREMENTS SET FORTH IN APPLICABLE LANDSCAPING ORDINANCES.

UNLESS OTHERWISE NOTED.

LEGEND

- SUBDIVISION BOUNDARY LINE (Heavy Solid Line)
- LOT LINE/PROPERTY LINE (Solid Line)
- ADJACENT LOT LINE/PROPERTY LINE (Light Solid Line)
- BUILDING LINE (Long Dashed Line)
- EASEMENT LINE/LIMITS OF EASEMENT (Short Dashed Line)
- CENTERLINE (Single Dashed Line)
- QUARTER SECTION LINE (Double Dashed Line)
- SECTION LINE (Triple Dashed Line)
- FOUND CONCRETE MONUMENT (Square with dot)
- SET CONCRETE MONUMENT (Square)
- SECTION CORNER OR QUARTER SECTION CORNER (Circle with cross)

PREPARED FOR:  
 MAF DEVELOPMENTS, INC.  
 1823 CENTRE POINTE CIRCLE, P.O. BOX 3142  
 NAPERVILLE, IL 60566-7142  
 (630) 355-9540

PREPARED BY:  
 CEMCON, Ltd.  
 Consulting Engineers, Land Surveyors & Planners  
 11151 COUNTY FARM ROAD  
 WINFIELD, ILLINOIS 60190  
 (630) 653-1030

DISC NO.: 244203P FILE NAME: PLAT8-1.dwg  
 DRAWN BY: N.K.S. FLD. BK. / PG. NO.: 6/19/60  
 COMPLETION DATE: 09-25-01 JOB NO.: 244.203  
 REVISED: 05-17-02/NKS PER CITY REVIEW LETTER DATED 2/10/02  
 REVISED: 5-24-02/SNR REMOVED PATHWAY & LANDSCAPE ESMNT  
 REVISED: 6-4-02/LLW PER CITY REVIEW LETTER DATED 5-30-02  
 REVISED: 7-2-02/LLW PER CITY REVIEW LETTER DATED 6-27-02

Copyright © 2001 Cemcon, Ltd. All rights reserved.