



PLANT SCHEDULE

BOTANICAL / COMMON NAME	COND.	SIZE	QTY
CANOPY TREES			
CEL OCC	B & B	2.5" CAL	5
GIN PSG	B & B	2.5" CAL	4
GLE I18	B & B	2.5" CAL	7
LIQ W03	B & B	2.5" CAL	3
TIL RED	B & B	2.5" CAL	5
TIL GRE	B & B	2.5" CAL	4
EVERGREEN TREES			
PIN TAN	B & B	8' HT.	3
PIN STR	B & B	8' HT.	2
UNDERSTORY TREES			
ACE BLO	CONT.	#10	1
ACE TMK	B & B	#10	2
BET JAP	B & B	8' CLUMP	1
CER CAN	B & B	2" CAN.	2
DECIDUOUS SHRUBS			
ARO ARB	B & B	36" HT.	14
COT ACU	B & B	36" HT.	29
DIE KRD	5 GAL	24" SPREAD	8
FOT AIR	B & B	24" HT.	12
ITE NNG	CONT.	#5	12
RHU GRO	B & B	24" SPREAD	21
ROS FL3	B & B	24" SPREAD	27
SYR MIS	B & B	36" HT.	8
VIB MUF	B & B	30" HT.	13
VIB LUS	B & B	36" HT.	14
WEI ALE	B & B	24" HT.	6
EVERGREEN SHRUBS			
BUX CHI	CONT.	5 GAL	14
JUN PFI	B & B	24" SPREAD	12
JUN FOR	B & B	24" SPREAD	21
JUN HU2	5 GAL	24" SPREAD	23
PIN SLO	5 GAL	24" HT.	12
TAX DEN	B & B	36" HT.	10
TAX EVE	B & B	24" SPREAD	10
THU SMA	B & B	5" HT.	14
THU WOO	B & B	30" HT.	28
GRASSES			
CAL KAR	CONT.	#1	65
PAN HEA	CONT.	#1	28
SPO HET	CONT.	#1	5
GROUND COVERS			
PAC PRO	CONT.	QUART	19
PERENNIALS			
HEM GRO	CONT.	#1	10
HOS LIB	CONT.	#1	13
LEU DA2	CONT.	QUART	17
NEP WAL	CONT.	#1	239
SYM PUG	QUART	QUART	15
TURF GRASS			
TUR SOD	COND.	SIZE	QTY
	SOD	S.F.	15,388 SF

SITE MATERIALS PLANT SCHEDULE

DECORATIVE STONE MULCH	3,533 SF
SHREDDED BARK MULCH	1,507 SF
EXISTING TURF GRASS	2,718 SF
MEXICAN PEBBLES	107 SF

LANDSCAPE DATA

FOUNDATION PLANTINGS	LENGTH	REQUIRED	PROVIDED
1 PLANT PER 3 LINEAL FEET OF BUILDING LENGTH THAT FRONTS RD/W.	389 L.F.	129 PLANTS	186 PLANTS
PARKWAY TREES (Utilizing Existing Parkway Trees and Spacing)	555 L.F.	14 TREES	18 TREES
1 TREE PER 40 L.F. OF PARKWAY FRONTAGE	146 L.F.	2 TREES	4 TREES
PERIMETER PARKING LOT LANDSCAPE (EAST SIDE)	73 L.F.	77 L.F.	4 TREES
1 TREE EVERY 70 L.F. AND SCREENING 50% WITH SHRUBS MIN. 30" HT. (Exclusive of Drives)	146 L.F.	2 TREES	77 L.F.
PERIMETER PARKING LOT LANDSCAPE (SOUTH SIDE)	217 L.F.	3 TREES	3 TREES
1 TREE EVERY 70 L.F. AND SCREENING 50% WITH SHRUBS MIN. 30" HT. (Exclusive of Drives)	109 L.F.	109 L.F.	109 L.F.
PERIMETER PARKING LOT LANDSCAPE (WEST SIDE)	200 L.F.	3 TREES	7 TREES
1 TREE EVERY 70 L.F. AND SCREENING 50% WITH SHRUBS MIN. 30" HT. (Exclusive of Drives)	100 L.F.	100 L.F.	111 L.F.

LANDSCAPE NOTES:

- PLANT QUANTITIES SHOWN IN THE PLANT SCHEDULE ARE FOR CONVENIENCE ONLY. THE CONTRACTOR IS RESPONSIBLE FOR PROVIDING AND INSTALLING ALL MATERIALS SHOWN ON THE PLAN AND SHOULD NOT RELY ON THE PLANT SCHEDULE FOR DETERMINING QUANTITIES.
- ALL PLANT MATERIALS SHALL BE NURSERY GROWN STOCK AND SHALL BE FREE FROM ANY DEFORMITIES, DISEASES OR INSECT DAMAGE. ANY MATERIALS WITH DAMAGED OR CROOKED/DISFIGURED LEADERS, BARK ABRASION, SUNSCALD, INSECT DAMAGE, ETC. ARE NOT ACCEPTABLE AND WILL BE REJECTED. TREES WITH MULTIPLE LEADERS WILL BE REJECTED UNLESS CALLED OUT IN THE PLANT SCHEDULE AS MULTI-STEM. NO PRUNING TO BE DONE AT THE TIME OF INSTALLATION EXCEPT FOR DEAD OR BROKEN LIMBS.
- ALL LANDSCAPE IMPROVEMENTS SHALL MEET MUNICIPALITY REQUIREMENTS AND GUIDELINES, WHICH SHALL BE VERIFIED BY MUNICIPAL AUTHORITIES.
- ALL PLANTING OPERATIONS SHALL BE COMPLETED IN ACCORDANCE WITH STANDARD HORTICULTURAL PRACTICES. THIS MAY INCLUDE, BUT NOT BE LIMITED TO, PROPER PLANTING BED AND TREE FIT PREPARATION, PLANTING MIX, PRUNING, STAKING AND GUYING, WRAPPING, SPRAYING, FERTILIZATION, PLANTING AND ADEQUATE MAINTENANCE OF MATERIALS DURING CONSTRUCTION ACTIVITIES.
- ALL PLANT MATERIALS SHALL BE INSPECTED AND APPROVED BY THE LANDSCAPE ARCHITECT PRIOR TO INSTALLATION. ANY MATERIALS INSTALLED WITHOUT APPROVAL MAY BE REJECTED.
- THE CONTRACTOR SHALL GUARANTEE PLANT MATERIALS FOR A PERIOD OF ONE YEAR FROM DATE OF ACCEPTANCE BY OWNER. THE CONTRACTOR SHALL OUTLINE PROPER MAINTENANCE PROCEDURES TO THE OWNER AT THE TIME OF ACCEPTANCE. DURING THE GUARANTEE PERIOD, DEAD OR DISEASED MATERIALS SHALL BE REPLACED AT NO COST TO THE OWNER. AT THE END OF THE GUARANTEE PERIOD THE CONTRACTOR SHALL OBTAIN FINAL ACCEPTANCE FROM THE OWNER.
- ANY EXISTING TREES TO BE RETAINED SHALL BE PROTECTED FROM SOIL COMPACTION AND OTHER DAMAGES THAT MAY OCCUR DURING CONSTRUCTION ACTIVITIES BY ERECTING FENCING AROUND SUCH MATERIALS AT A DISTANCE OF 8.5' FROM THE TRUNK.
- ALL GRASS, CLUMPS, OTHER VEGETATION, DEBRIS, STONES, ETC. SHALL BE RAKED OR OTHERWISE REMOVED FROM PLANTING AND LAWN AREAS PRIOR TO INITIATION OF INSTALLATION PROCEDURES.
- THE CONTRACTOR SHALL VERIFY THE LOCATIONS OF ALL UNDERGROUND UTILITIES PRIOR TO INITIATING PLANTING OPERATIONS. THE CONTRACTOR SHALL REPAIR/ REPLACE AND UTILITY, PAVING, CURBING, ETC. WHICH IS DAMAGED DURING PLANTING OPERATIONS.
- SIZE AND GRADING STANDARDS OF PLANT MATERIALS SHALL CONFORM TO THE LATEST EDITION OF ANSI Z60.1, AMERICAN STANDARDS FOR NURSERY STOCK, BY THE AMERICAN NURSERY & LANDSCAPE ASSOCIATION.
- REFER TO PLAT OF SURVEY FOR LEGAL DESCRIPTION, BOUNDARY DIMENSIONS AND EXISTING CONDITIONS.
- ALL PLANT MATERIAL ON THIS PLANTING PLAN REPRESENTS THE INTENTION AND INTENSITY OF THE PROPOSED LANDSCAPE MATERIAL. THE EXACT SPECIES AND LOCATIONS MAY VARY IN THE FIELD DO TO MODIFICATIONS IN THE SITE IMPROVEMENTS AND THE AVAILABILITY OF PLANT MATERIAL AT THE TIME OF INSTALLATION. ANY SUCH CHANGES MUST FIRST BE APPROVED BY THE CITY IN WRITING.
- ALL PLANT MATERIAL SHALL BE PLANTED WITH A MINIMUM OF SIX INCHES OF ORGANIC SOIL AND MULCHED WITH A SHREDDED BARK MATERIAL TO A MINIMUM 3" DEPTH UNLESS OTHERWISE NOTED ON THE PLANS.
- ALL BEDS SHALL BE EDGED, HAVE WEED PREEMERGENTS APPLIED AT THE RECOMMENDED RATE.
- ALL LAWN AREAS ON THIS PLAN SHALL BE GRADED SMOOTH AND TOPPED WITH AT LEAST 6" OF TOPSOIL. ALL LAWN AREAS TO BE ESTABLISHED USING SOD UNLESS OTHERWISE NOTED.
- THIS LANDSCAPE PLAN ASSUMES THE SITE WILL BE PREPARED WITH TOP SOIL SUITABLE FOR THE ESTABLISHMENT OF THE LANDSCAPE MATERIAL PRESENTED ON THIS PLAN. IF ADDITIONAL TOP SOIL IS REQUIRED IT IS UP TO THE LANDSCAPE CONTRACTOR ON THE PROJECT TO PROVIDE, SPREAD AND PREPARE THE SITE AS NEEDED FOR THE IMPLEMENTATION OF THIS LANDSCAPE PLAN.
- CONTRACTORS MUST VERIFY ALL QUANTITIES AND OBTAIN ALL PROPER PERMITS AND LICENSES FROM THE PROPER AUTHORITIES.
- ALL MATERIAL MUST MEET INDUSTRY STANDARDS AND THE LANDSCAPE ARCHITECT HAS THE RIGHT TO REFUSE ANY POOR MATERIAL OR WORKMANSHIP.
- LANDSCAPE ARCHITECT IS NOT RESPONSIBLE FOR UNSEEN SITE CONDITIONS.
- ALL PLANTINGS SHALL BE SPACED EQUAL DISTANT, BACK FILLED WITH AMENDED SOIL IN A HOLE TWICE THE ROOTBALL DIAMETER, WATERED, FERTILIZED, PRUNED, AND HAVE ALL TAGS AND ROPES REMOVED.
- LAWN AND BED AREAS SHALL BE ROTOTILLED, RAKED OF CLUMPS AND DEBRIS.
- REMOVE ALL DEAD AND DISEASED PLANT MATERIAL FROM SITE AND DISPOSE OF PROPERLY.
- PLANTS TO BE PLANTED SO THAT ROOT FLARE IS AT THE GRADE OF THE AREA WHERE PLANTED. NO PRUNING TO BE DONE AT THE TIME OF INSTALLATION EXCEPT TO REMOVE DEAD OR BROKEN LIMBS.
- TREES SHALL BE STAKED AND GUYED, AND HAVE A WATERING SAUCER AT BASE.
- ALL BEDS TO BE BERMED 12" TO 24" ABOVE GRADE AND MEET DRAINAGE REQUIREMENTS.
- ALL RESTORATION WITHIN THE LIMITS OF THE RIGHT-OF-WAY SHALL BE COMPLETED WITH TOPSOIL AND SOD.
- TREES SHALL BE INSTALLED A MINIMUM OF FIVE (5) FEET HORIZONTALLY FROM UNDERGROUND ELECTRICAL FEEDERS, SANITARY SEWERS, SANITARY SERVICES, WATER MAINS, AND WATER SERVICES. TREES SHALL BE INSTALLED A MINIMUM OF TEN (10) FEET HORIZONTALLY FROM UTILITY STRUCTURES AND APPURTENANCES, INCLUDING, BUT NOT LIMITED TO, MANHOLES, VALVE VAULTS, VALVE BOXES AND FIRE HYDRANTS. NO TREES, SHRUBS OR OBSTACLES WILL BE ALLOWED 10' IN FRONT OF, 5' ON THE SIDES, AND 7' TO THE REAR OF THE ELECTRICAL TRANSFORMER.

Commercial | Residential | Industrial

14421 Oakley Ave
Orland Park, IL 60462
Tel: 708-933-4200
Fax: 708-966-0854

Architectural Studio, Ltd.
www.archstudiodld.net

145 COMMERCE DRIVE, SUITE A
GRAYSLAKE, ILLINOIS 60030
PHONE: (847) 223-4804
FAX: (847) 223-4864
EMAIL: INFO@EEA-LTD.COM

No.	Description	Date
1.	City Plan Review	2022-09-09
2.	City Plan Review	2022-10-07

Wu's House
Beebe Dr. & Fitness
Naperville, IL.

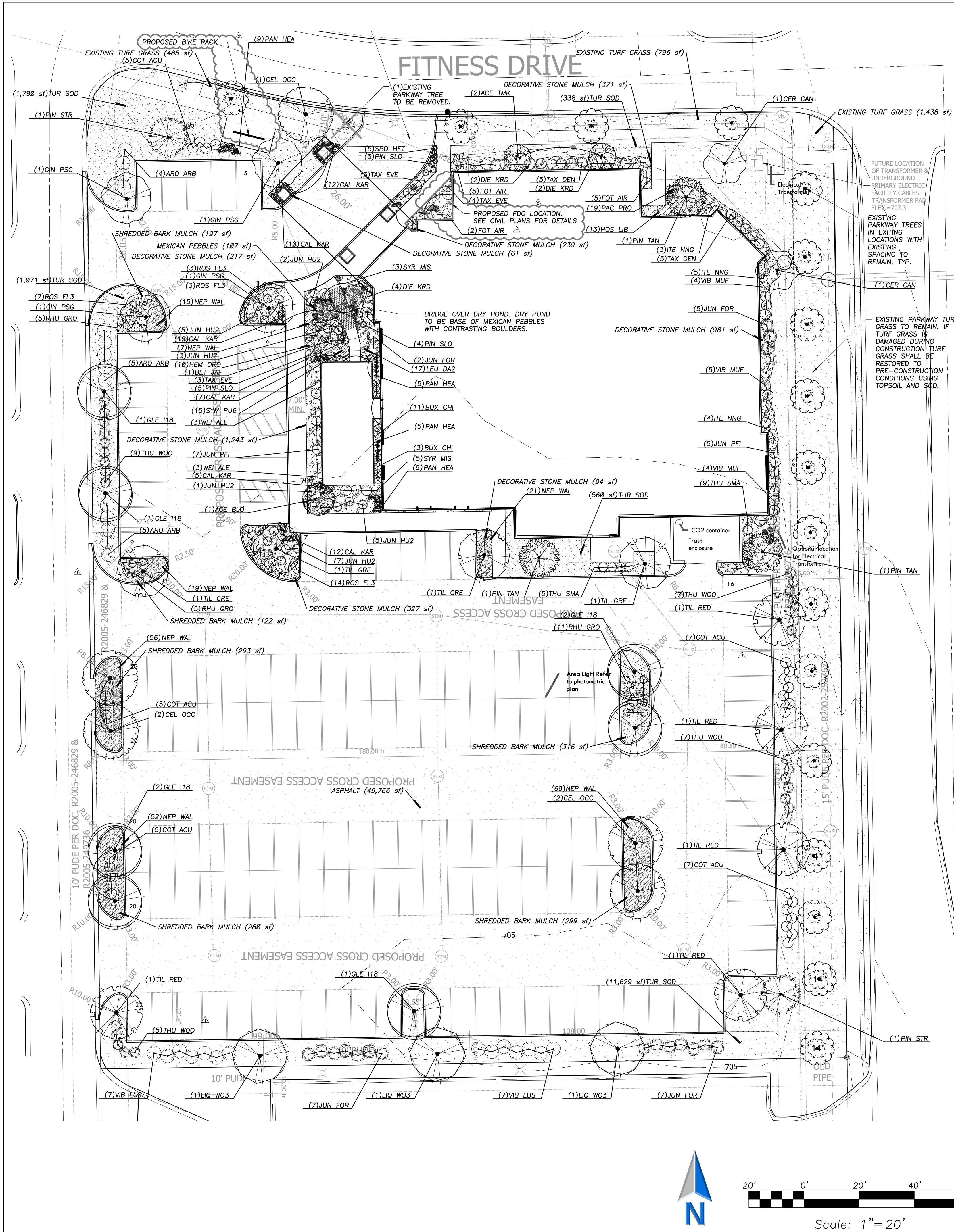
Final Landscape Plan

Project number: 2022-047
Date: 7-26-2022
Drawn by: SSG
Checked by: SAS

L1

Scale: 1" = 20'-0"

Exhibit D



PLANT SCHEDULE

CANOPY TREES	BOTANICAL / COMMON NAME	COND.	SIZE	QTY
CEL OCC	CELSTIS OCCIDENTALIS / COMMON HACKBERRY	B & B	2.5" CAL	5
GIN PSG	GINKGO BILOBA 'PRINCETON SENTRY' / PRINCETON SENTRY MAIDENHAIR TREE	B & B	2.5" CAL	4
GLE I18	GLEITZIA TRICANTHOS 'INERMIS' / THORNLESS SKYLINE HONEYLOCUST	B & B	2.5" CAL	7
LIQ WO3	LIQUIDAMBAR STYRACIOLA 'WORPLESSON' / WORPLESSON SWEET GUM	B & B	2.5" CAL	3
TIL RED	TILIA AMERICANA 'REDMOND' / REDMOND AMERICAN LINDEN	B & B	2.5" CAL	5
TIL GRE	TILIA CORDATA 'GREENSPIRE' / GREENSPIRE LITTLELEAF LINDEN	B & B	2.5" CAL	4
EVERGREEN TREES	BOTANICAL / COMMON NAME	COND.	SIZE	QTY
PIN TAN	PINUS DENSIFLORA 'UMBRAULIFERA' / TANYOSHO PINE	B & B	8' HT.	3
PIN STR	PINUS STROBUS / WHITE PINE	B & B	8' HT.	2
UNDERSTORY TREES	BOTANICAL / COMMON NAME	COND.	SIZE	QTY
ACE BLO	ACER PALMATUM 'BLOODGOOD' / BLOODGOOD JAPANESE MAPLE	CONT.	#10	1
ACE TMK	ACER PALMATUM DISSECTUM 'TAMUKAYAMA' / TAMUKAYAMA JAPANESE MAPLE	CONT.	#10	2
BET JAP	BETULA PLATYPHYLLA JAPONICA 'WHITESPIRE' / JAPANESE BIRCH	B & B	8' CLUMP	1
CER CAN	CERCIS CANADENSIS / EASTERN REDBUD	B & B	2" CAL.	2
DECIDUOUS SHRUBS	BOTANICAL / COMMON NAME	COND.	SIZE	QTY
ARO ARB	ARONIA ARBUTIFOLIA 'BRILLIANTISSIMA' / BRILLIANT RED CHOKEBERRY	B & B	36" HT.	14
COT ACU	COTONEASTER ACUTIFOLIUS / PEKING COTONEASTER	B & B	36" HT.	29
DIE KR0	DIERVILLA X 'G2X885411' TM / KODIAK RED DIERVILLA	5 GAL	24" SPREAD	8
FOT AIR	FOTHERGILLIA GARDENII 'MT. AIRY' / MOUNT AIRY FOTHERGILLIA	B & B	24" HT.	12
ITE NNG	ITEA VIRGINICA 'SMINVOFC' TM / SCENTLANDIA SWEETSPIRE	CONT.	#5	12
RHU GRO	RHUS AROMATICA 'GRO-L0W' / GRO-LOW FRAGRANT SUMAC	B & B	24" SPREAD	21
ROS FL3	ROSA X 'FLOWER CARPET CORAL' / ROSE	B & B	24" SPREAD	27
SYR MIS	SYRINGA PATULA 'MISS KIM' / MISS KIM LILAC	B & B	36" HT.	8
VIB MUF	VIBURNUM DENTATUM 'BLUE MUFFIN' / SOUTHERN ARROWWOOD	B & B	30" HT.	13
VIB LUS	VIBURNUM DENTATUM 'CHICAGO LUSTER' / CHICAGO LUSTER ARROWWOOD	B & B	36" HT.	14
WEI ALE	WEIGELA FLORIDA 'ALEXANDRA' TM / WEIGELA	B & B	24" HT.	6
EVERGREEN SHRUBS	BOTANICAL / COMMON NAME	COND.	SIZE	QTY
BUX CHI	BUXUS X 'CHICAGO LAND GREEN' TM / GLENCOE BOXWOOD	CONT.	5 GAL	14
JUN PFI	JUNIPERUS CHINENSIS 'KALLAYS COMPACT' / KALLAY COMPACT PFTZER JUNIPER	B & B	24" SPREAD	12
JUN FOR	JUNIPERUS CHINENSIS 'SEA GREEN' / SEA GREEN JUNIPER	B & B	24" SPREAD	21
JUN HU2	JUNIPERUS HORIZONTALIS 'HUGHES' / HUGHES JUNIPER	5 GAL	24" SPREAD	23
PIN SLO	PINUS MUGO 'SLOWGROWND' / MUGO PINE	5 GAL	24" HT.	12
TAX DEN	TAXUS X MEDIA 'DENSIFORMIS' / DENSE YEW	B & B	36" HT.	10
TAX EVE	TAXUS X MEDIA 'EVERLOW' / YEW	B & B	24" SPREAD	10
THU SMA	THUJA OCCIDENTALIS 'SMARAGD' / EMERALD GREEN ARBORVITAE	B & B	5' HT.	14
THU WOO	THUJA OCCIDENTALIS 'WOODWARDII' / WOODWARD ARBORVITAE	B & B	30" HT.	28
GRASSES	BOTANICAL / COMMON NAME	COND.	SIZE	QTY
CAL KAR	CALAMAGROSTIS X ACUTIFLORA 'KARL FOERSTER' / FEATHER REED GRASS	CONT.	#1	65
PAN HEA	PANICUM VIRGATUM 'HEAVY METAL' / BLUE SWITCH GRASS	CONT.	#1	28
SPO HET	SPOROBOLUS HETEROLEPIS / PRAIRIE DROPSEED	CONT.	#1	5
GROUND COVERS	BOTANICAL / COMMON NAME	COND.	SIZE	QTY
PAC PRO	PACHYSANDRA PROCUMBENS / ALLEGHENY SPURGE	CONT.	QUART	19
PERENNIALS	BOTANICAL / COMMON NAME	COND.	SIZE	QTY
HEM GRO	HEMEROCALLIS X 'STELLA DE ORO' / STELLA DE ORO DAYLILY	CONT.	#1	10
HOS LIB	HOSTA X 'LIBERTY' / PLANTAIN LILY	CONT.	#1	13
LEU DA2	LEUCANTHEMUM X SUPERBUM 'DAISY MAY' / SHASTA DAISY	CONT.	QUART	17
NEP WAL	NEPETA X 'FASSENII' WALKERS LOW' / WALKERS LOW CATMINT	CONT.	#1	239
SYM PUG	SYMPHYOTRICHUM NOVAE-ANGLAE 'PURPLE DOME' / NEW ENGLAND ASTER	QUART	QUART	15
TURF GRASS	BOTANICAL / COMMON NAME	COND.	SIZE	QTY
TURF SOD	TURF SOD / DROUGHT TOLERANT FESCUE BLEND	SOD	S.F.	15,388 SF

SITE MATERIALS PLANT SCHEDULE

Material	Quantity
DECORATIVE STONE MULCH	3,533 SF
SHREDDED BARK MULCH	1,507 SF
EXISTING TURF GRASS	2,718 SF
MEXICAN PEBBLES	107 SF

LANDSCAPE DATA:

Foundation Plantings	Length	Required	Provided
1 PLANT PER 3 LINEAL FEET OF BUILDING LENGTH THAT FRONTS ROW.	389 L.F.	129 PLANTS	186 PLANTS
PARKWAY TREES (Utilizing Existing Parkway Trees and Spacing)	555 L.F.	14 TREES	18 TREES
1 TREE PER 40 L.F. OF PARKWAY FRONTAGE			
PERIMETER PARKING LOT LANDSCAPE (EAST SIDE)			
1 TREE EVERY 70 L.F. AND SCREENING 50% WITH SHRUBS MIN. 30" HT. (Exclusive of Drives)	146 L.F. SCREENING	2 TREES 73 L.F.	4 TREES 77 L.F.
PERIMETER PARKING LOT LANDSCAPE (SOUTH SIDE)			
1 TREE EVERY 70 L.F. AND SCREENING 50% WITH SHRUBS MIN. 30" HT. (Exclusive of Drives)	217 L.F. SCREENING	3 TREES 109 L.F.	3 TREES 109 L.F.
PERIMETER PARKING LOT LANDSCAPE (WEST SIDE)			
1 TREE EVERY 70 L.F. AND SCREENING 50% WITH SHRUBS MIN. 30" HT. (Exclusive of Drives)	200 L.F. SCREENING	3 TREES 100 L.F.	7 TREES 111 L.F.

LANDSCAPE NOTES:

- PLANT QUANTITIES SHOWN IN THE PLANT SCHEDULE ARE FOR CONVENIENCE ONLY. THE CONTRACTOR IS RESPONSIBLE FOR PROVIDING AND INSTALLING ALL MATERIALS SHOWN ON THE PLAN AND SHOULD NOT RELY ON THE PLANT SCHEDULE FOR DETERMINING QUANTITIES.
- ALL PLANT MATERIALS SHALL BE NURSERY GROWN STOCK AND SHALL BE FREE FROM ANY DEFORMITIES, DISEASES OR INSECT DAMAGE. ANY MATERIALS WITH DAMAGED OR CROOKED/DISFIGURED LEADERS, BARK ABRASION, SUNSCALD, INSECT DAMAGE, ETC. ARE NOT ACCEPTABLE AND WILL BE REJECTED. TREES WITH MULTIPLE LEADERS WILL BE REJECTED UNLESS CALLED OUT IN THE PLANT SCHEDULE AS MULTI-STEM. NO PRUNING TO BE DONE AT THE TIME OF INSTALLATION EXCEPT FOR DEAD OR BROKEN LIMBS.
- ALL LANDSCAPE IMPROVEMENTS SHALL MEET MUNICIPALITY REQUIREMENTS AND GUIDELINES, WHICH SHALL BE VERIFIED BY MUNICIPAL AUTHORITIES.
- ALL PLANTING OPERATIONS SHALL BE COMPLETED IN ACCORDANCE WITH STANDARD HORTICULTURAL PRACTICES. THIS MAY INCLUDE, BUT NOT BE LIMITED TO, PROPER PLANTING BED AND TREE FIT PREPARATION, PLANTING MIX, PRUNING, STAKING AND GUYING, WRAPPING, SPRAYING, FERTILIZATION, PLANTING AND ADEQUATE MAINTENANCE OF MATERIALS DURING CONSTRUCTION ACTIVITIES.
- ALL PLANT MATERIALS SHALL BE INSPECTED AND APPROVED BY THE LANDSCAPE ARCHITECT PRIOR TO INSTALLATION. ANY MATERIALS INSTALLED WITHOUT APPROVAL MAY BE REJECTED.
- THE CONTRACTOR SHALL GUARANTEE PLANT MATERIALS FOR A PERIOD OF ONE YEAR FROM DATE OF ACCEPTANCE BY OWNER. THE CONTRACTOR SHALL OUTLINE PROPER MAINTENANCE PROCEDURES TO THE OWNER AT THE TIME OF ACCEPTANCE. DURING THE GUARANTEE PERIOD, DEAD OR DISEASED MATERIALS SHALL BE REPLACED AT NO COST TO THE OWNER. AT THE END OF THE GUARANTEE PERIOD THE CONTRACTOR SHALL OBTAIN FINAL ACCEPTANCE FROM THE OWNER.
- ANY EXISTING TREES TO BE RETAINED SHALL BE PROTECTED FROM SOIL COMPACTION AND OTHER DAMAGES THAT MAY OCCUR DURING CONSTRUCTION ACTIVITIES BY ERECTING FENCING AROUND SUCH MATERIALS AT A DISTANCE OF 8.5' FROM THE TRUNK.
- ALL GRASS, CLUMPS, OTHER VEGETATION, DEBRIS, STONES, ETC. SHALL BE RAKED OR OTHERWISE REMOVED FROM PLANTING AND LAWN AREAS PRIOR TO INITIATION OF INSTALLATION PROCEDURES.
- THE CONTRACTOR SHALL VERIFY THE LOCATIONS OF ALL UNDERGROUND UTILITIES PRIOR TO INITIATING PLANTING OPERATIONS. THE CONTRACTOR SHALL REPAIR/ REPLACE AND UTILITY, PAVING, CURBING, ETC., WHICH IS DAMAGED DURING PLANTING OPERATIONS.
- SIZE AND GRADING STANDARDS OF PLANT MATERIALS SHALL CONFORM TO THE LATEST EDITION OF ANSI Z60.1, AMERICAN STANDARDS FOR NURSERY STOCK, BY THE AMERICAN NURSERY & LANDSCAPE ASSOCIATION.
- REFER TO PLAT OF SURVEY FOR LEGAL DESCRIPTION, BOUNDARY DIMENSIONS AND EXISTING CONDITIONS.
- ALL PLANT MATERIAL ON THIS PLANTING PLAN REPRESENTS THE INTENTION AND INTENSITY OF THE PROPOSED LANDSCAPE MATERIAL. THE EXACT SPECIES AND LOCATIONS MAY VARY IN THE FIELD DO TO MODIFICATIONS IN THE SITE IMPROVEMENTS AND THE AVAILABILITY OF PLANT MATERIAL AT THE TIME OF INSTALLATION. ANY SUCH CHANGES MUST FIRST BE APPROVED BY THE CITY IN WRITING.
- ALL PLANT MATERIAL SHALL BE PLANTED WITH A MINIMUM OF SIX INCHES OF ORGANIC SOIL AND MULCHED WITH A SHREDDED BARK MATERIAL TO A MINIMUM 3" DEPTH UNLESS OTHERWISE NOTED ON THE PLANS.
- ALL BEDS SHALL BE EDGED, HAVE WEED PREEMERGENTS APPLIED AT THE RECOMMENDED RATE.
- ALL LAWN AREAS ON THIS PLAN SHALL BE GRADED SMOOTH AND TOPPED WITH AT LEAST 6" OF TOPSOIL. ALL LAWN AREAS TO BE ESTABLISHED USING SOD UNLESS OTHERWISE NOTED.
- THIS LANDSCAPE PLAN ASSUMES THE SITE WILL BE PREPARED WITH TOP SOIL SUITABLE FOR THE ESTABLISHMENT OF THE LANDSCAPE MATERIAL PRESENTED ON THIS PLAN. IF ADDITIONAL TOP SOIL IS REQUIRED IT IS UP TO THE LANDSCAPE CONTRACTOR ON THE PROJECT TO PROVIDE, SPREAD AND PREPARE THE SITE AS NEEDED FOR THE IMPLEMENTATION OF THIS LANDSCAPE PLAN.
- CONTRACTORS MUST VERIFY ALL QUANTITIES AND OBTAIN ALL PROPER PERMITS AND LICENSES FROM THE PROPER AUTHORITIES.
- ALL MATERIAL MUST MEET INDUSTRY STANDARDS AND THE LANDSCAPE ARCHITECT HAS THE RIGHT TO REFUSE ANY POOR MATERIAL OR WORKMANSHIP.
- LANDSCAPE ARCHITECT IS NOT RESPONSIBLE FOR UNSEEN SITE CONDITIONS.
- ALL PLANTINGS SHALL BE SPACED EQUAL DISTANT, BACK FILLED WITH AMENDED SOIL IN A HOLE TWICE THE ROOTBALL DIAMETER, WATERED, FERTILIZED, PRUNED, AND HAVE ALL TAGS AND ROPES REMOVED.
- LAWN AND BED AREAS SHALL BE ROTOTILLED, RAKED OF CLUMPS AND DEBRIS.
- REMOVE ALL DEAD AND DISEASED PLANT MATERIAL FROM SITE AND DISPOSE OF PROPERLY.
- PLANTS TO BE PLANTED SO THAT ROOT FLARE IS AT THE GRADE OF THE AREA WHERE PLANTED. NO PRUNING TO BE DONE AT THE TIME OF INSTALLATION EXCEPT TO REMOVE DEAD OR BROKEN LIMBS.
- TREES SHALL BE STAKED AND GUYED, AND HAVE A WATERING SAUCER AT BASE.
- ALL BEDS TO BE BERMED 12" TO 24" ABOVE GRADE AND MEET DRAINAGE REQUIREMENTS.
- ALL RESTORATION WITHIN THE LIMITS OF THE RIGHT-OF-WAY SHALL BE COMPLETED WITH TOPSOIL AND SOD.
- TREES SHALL BE INSTALLED A MINIMUM OF FIVE (5) FEET HORIZONTALLY FROM UNDERGROUND ELECTRICAL FEEDERS, SANITARY SEWERS, SANITARY SERVICES, WATER MAINS, AND WATER SERVICES. TREES SHALL BE INSTALLED A MINIMUM OF TEN (10) FEET HORIZONTALLY FROM UTILITY STRUCTURES AND APPURTENANCES, INCLUDING, BUT NOT LIMITED TO, MANHOLES, VALVE VAULTS, VALVE BOXES AND FIRE HYDRANTS. NO TREES, SHRUBS OR OBSTACLES WILL BE ALLOWED 10' IN FRONT OF, 5' ON THE SIDES, AND 7' TO THE REAR OF THE ELECTRICAL TRANSFORMER.

Commercial | Residential | Industrial

14421 Oakley Ave
Orland Park, IL 60462
Tel: 708-933-4200
Fax: 708-966-0854

Architectural Studio, Ltd.
www.archstudiotd.net

145 COMMERCE DRIVE, SUITE A
GRAYLAKE, ILLINOIS 60030
PHONE (847) 223-4804
FAX (847) 223-4864
EMAIL: INFO@EEA-LTD.COM

No.	Description	Date
1	City Plan Review	2022-09-09
2	City Plan Review	2022-10-07

Wu's House
Beebe Dr. & Fitness
Naperville, IL.

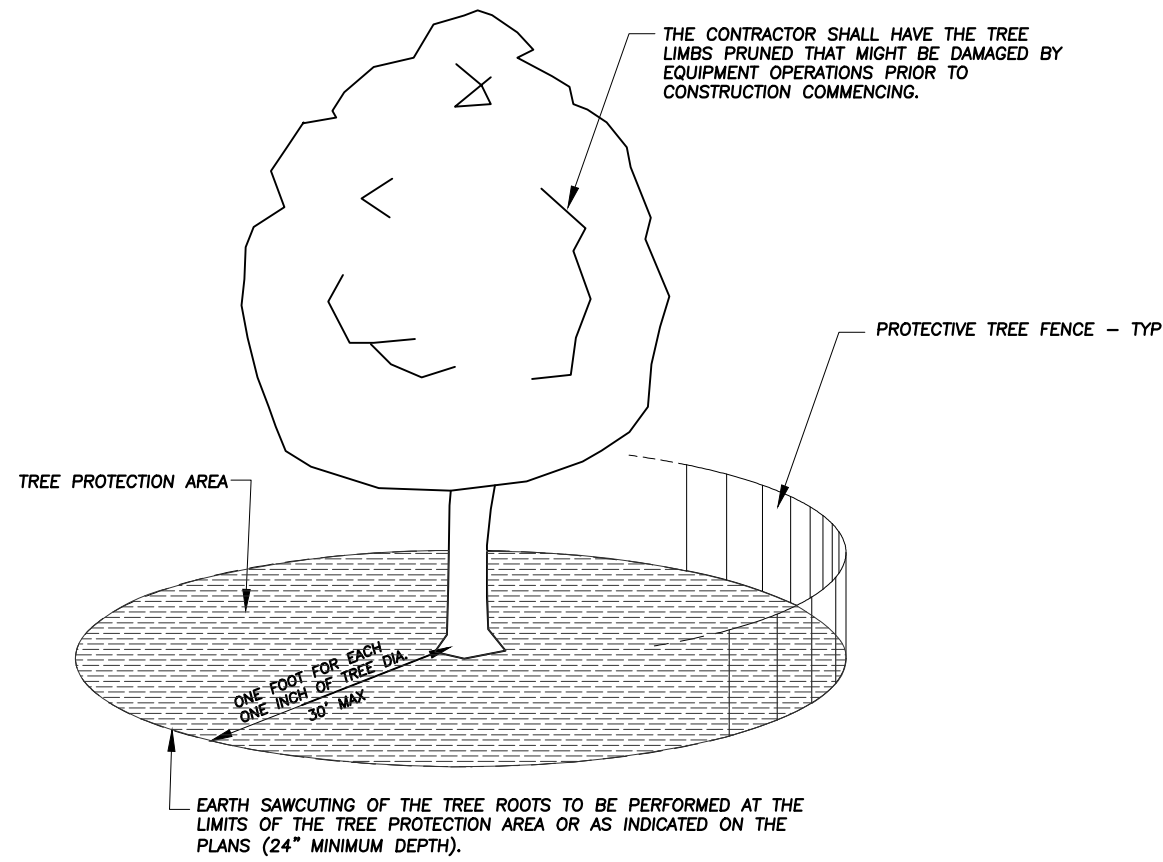
Final Landscape Plan

Project number	2022-047
Date	7-26-2022
Drawn by	SSG
Checked by	SAS

L1

Scale 1" = 20'-0"

Exhibit D



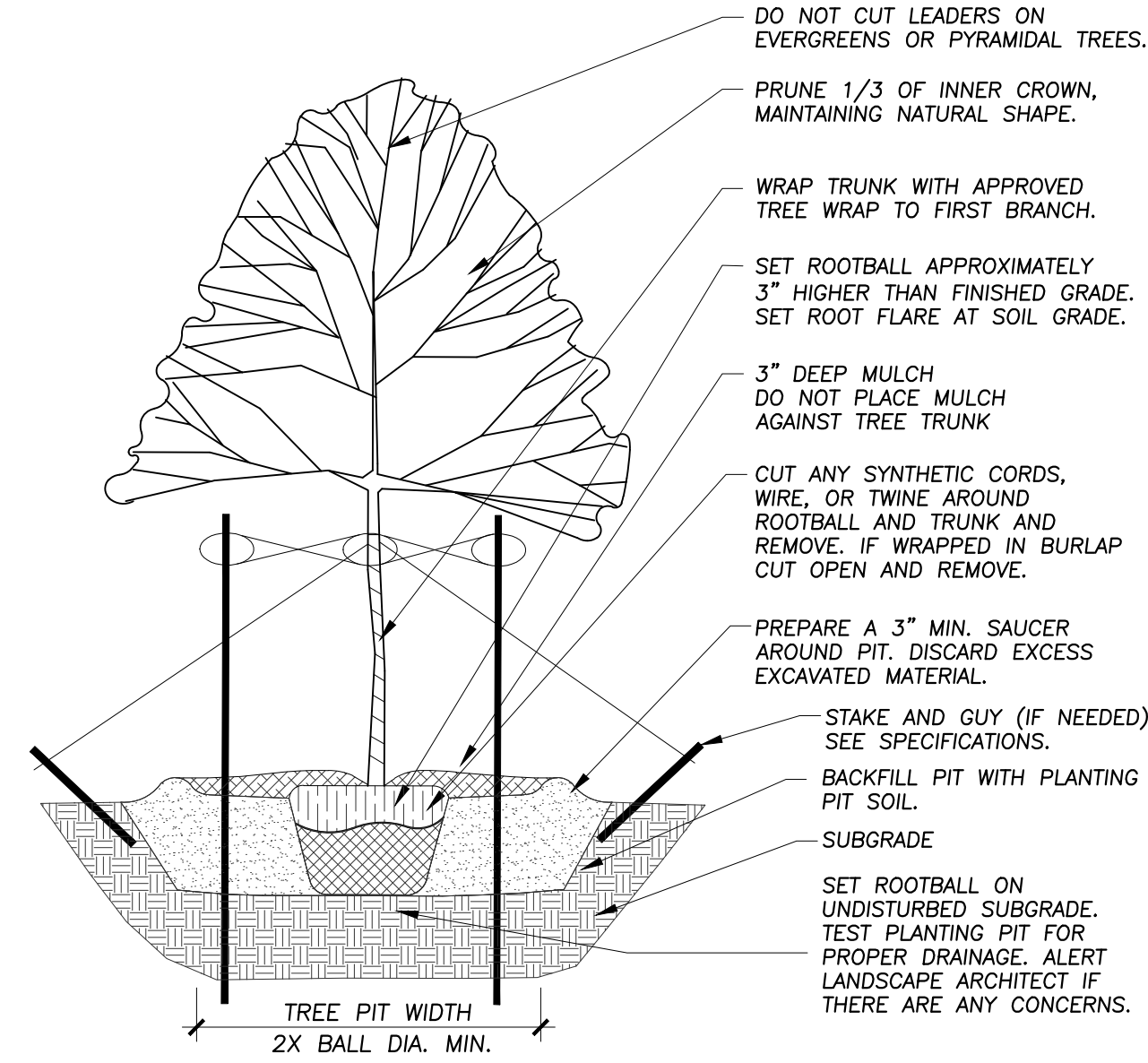
- NOTES:**
1. A TREE PROTECTION AREA SHALL BE ESTABLISHED AROUND A TREE A DISTANCE OF ONE FOOT FOR EACH ONE INCH OF TREE DIAMETER, UP TO A MAXIMUM OF 30 FEET.
 2. PROTECTIVE TREE FENCE SHALL BE INSTALLED AT THE LIMITS OF THE TREE PROTECTION AREA. THE FENCE SHALL BE HIGH ENOUGH SO AS TO BE VISIBLE TO ALL CONSTRUCTION PERSONNEL.
 3. GRADE CHANGES, UTILITY TRENCHES, STORAGE OF CONSTRUCTION MATERIAL, DUMPING OF WASTE, OR OPERATION OR STORAGE OF ANY EQUIPMENT SHALL NOT BE ALLOWED WITHIN THE TREE PROTECTION AREA.
 4. AUGURING IS REQUIRED IF A UTILITY MUST BE INSTALLED WITHIN THE TREE PROTECTION AREA. AUGURED UTILITIES MUST BE A MINIMUM OF 24 INCHES BELOW GRADE.
 5. ALL TREES TO BE SAVED WHICH HAVE BEEN SUBJECTED TO CONSTRUCTION ACTIVITY WITHIN THE TREE PROTECTION AREA SHOULD BE SELECTIVELY THINNED 10% BY AN ARBORIST SKILLED AT THE SELECTIVE THINNING PROCEDURE. NONE OF THE TREES SHALL BE TOPPED, HEADED BACK, SKINNED (REMOVAL OF THE INTERIOR BRANCHES), OR CLIMBED WITH SPIKES. ALL DEAD WOOD SHOULD BE REMOVED TO AVOID MADRAX.
 6. IT IS RECOMMENDED THAT FOLLOWING CONSTRUCTION, TREES BE MAINTAINED IN THEIR NATIVE CONDITION. NO LAWN SHOULD BE PLACED AROUND THE TREES. IT IS RECOMMENDED THAT THE AREA BE MULCHED WITH 2 INCHES OF DECOMPOSED LEAVES AND 2 INCHES OF WOOD CHIPS OR BARK.

City of Naperville
STANDARD DETAIL
REVISÉD: 08/01/2018 SHEET 1 OF 1

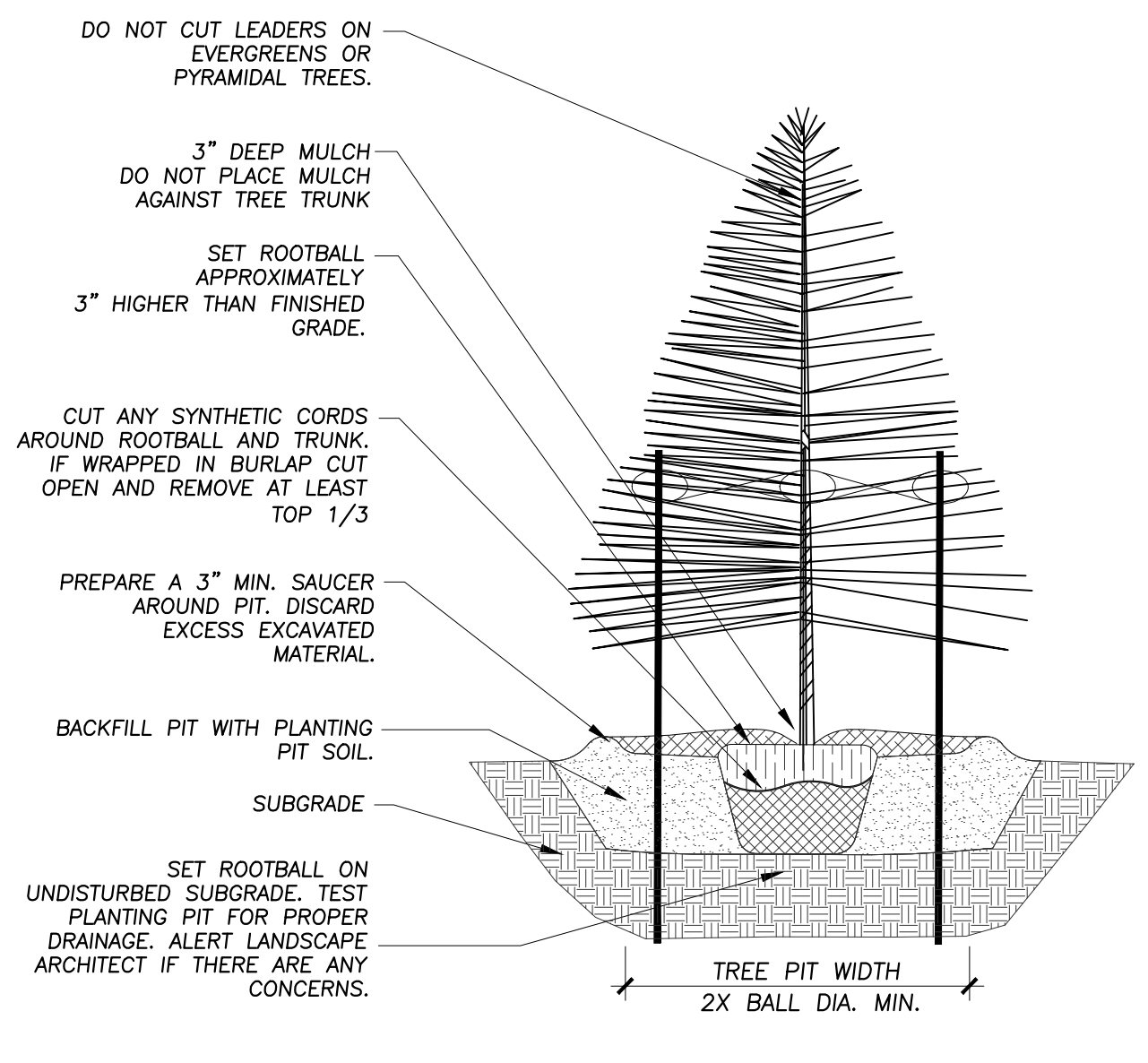
TREE PROTECTION

LANDSCAPE 10
790.10

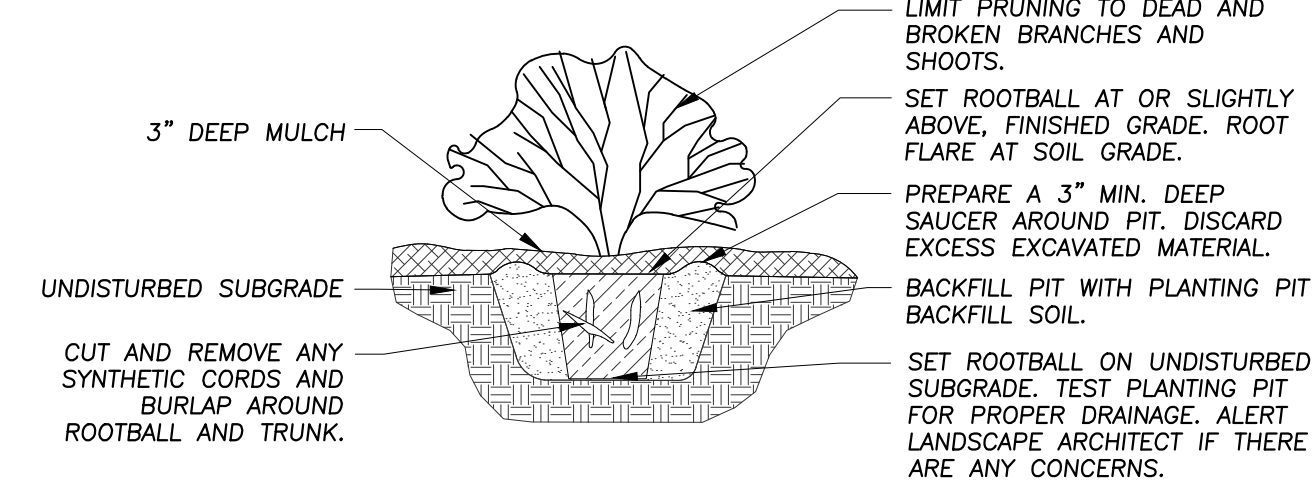
1 CITY OF NAPERVILLE TREE PROTECTION DETAIL
Not To Scale 329383-03



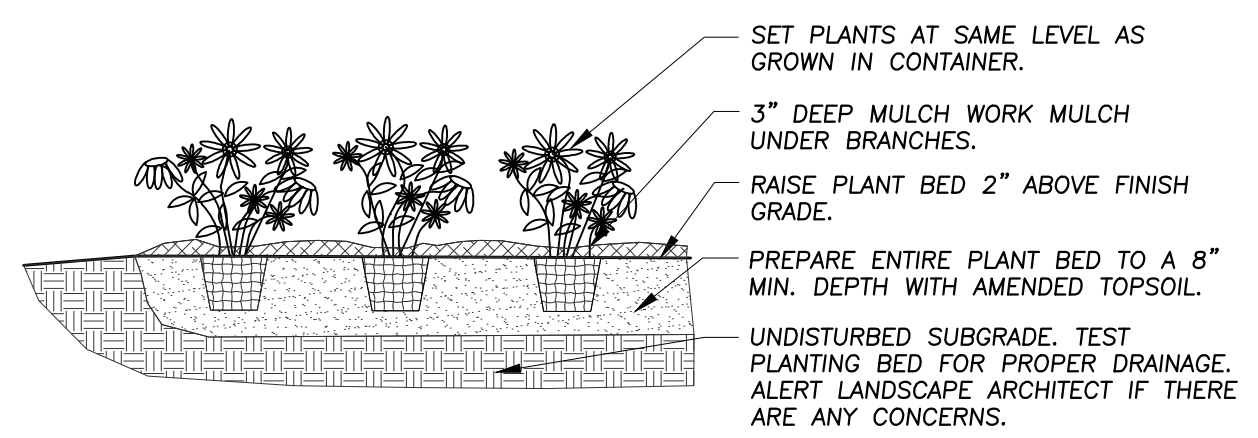
2 TREE PLANTING DETAIL
Not To Scale 329343-01



3 EVERGREEN TREE PLANTING DETAIL
NOT TO SCALE 329343-02



4 SHRUB PLANTING DETAIL
Not To Scale 329333-01



5 ANNUAL, PERENNIAL, & GROUND COVER DETAIL
Not To Scale 329301-03

MADRAX DIVISION
GRABER MANUFACTURING, INC.
1080 UNIEK DRIVE
WAUNAKEE, WI 53597
TOLL FREE: 1-800-448-7931
PHONE: (608) 848-1081
FAX: (608) 849-1081
www.madrax.com

SURFACE FLANGE MOUNT (SF)
 IN-GROUND MOUNT (IG)
 SURFACE GUSSET MOUNT (SG)

SELECT DESIRED FINISH
 STAINLESS STEEL
 GALVANIZED
 POWDER COATED

NOTE:
1. INSTALL BIKE RACKS ACCORDING TO MANUFACTURER'S SPECIFICATIONS.
2. DO NOT SCALE DRAWINGS.
3. CONSULTANT TO SELECT COLOR/FINISH. SEE MANUFACTURER'S SPECIFICATIONS.
4. SEE SITE PLAN FOR LOCATION OR CONSULT OWNER.
5. SPECIFICATIONS ARE SUBJECT TO CHANGE WITHOUT NOTICE.
6. CONTRACTOR NOTE: FOR PRODUCT AND COMPANY INFORMATION VISIT WWW.CADMEBS.COM/MS. REFERENCE NUMBER 300-110E.

NOTE:
OR APPROVED EQUAL FROM OWNERS REPRESENTATIVE. DETAILS SHOWN TO ILLUSTRATE DESIGN INTENT.

6 HEAVY DUTY WINDER BIKE RACK 13 BIKE, SURFACE OR IN-GROUND MOUNT
Not To Scale 129313.01-20

6 HEAVY DUTY WINDER BIKE RACK
Not To Scale 129313.01-20

Commercial | Residential | Industrial

ds
ARCHITECTURAL STUDIO, LTD.

14421 Oakley Ave
Orland Park, IL 60462
Tel: 708-933-4200
Fax: 708-966-0854

Architectural Studio, Ltd.
www.archstudiotd.net

ERIKSSON
ENGINEERING
ASSOCIATES, LTD.
LANDSCAPE ARCHITECTS

145 COMMERCE DRIVE, SUITE A
GRAYSLAKE, ILLINOIS 60030
PHONE: (847) 223-4804
FAX: (847) 223-4864
EMAIL: INFO@EEA-LTD.COM

STATE OF ILLINOIS
SEAL OF THE STATE OF ILLINOIS
STEVEN S. GREGORY
187-000582
LICENSED LANDSCAPE ARCHITECT
Expires: 08/31/2023

No.	Description	Date
1	City Plan Review	2022-09-09
2	City Plan Review	2022-10-07

Wu's House
Beebe Dr. & Fitness
Naperville, IL.

Final Landscape Details

Project number 2022-047
Date 7-26-2022
Drawn by SSG
Checked by SAS

L2

Scale 1" = 20'-0"