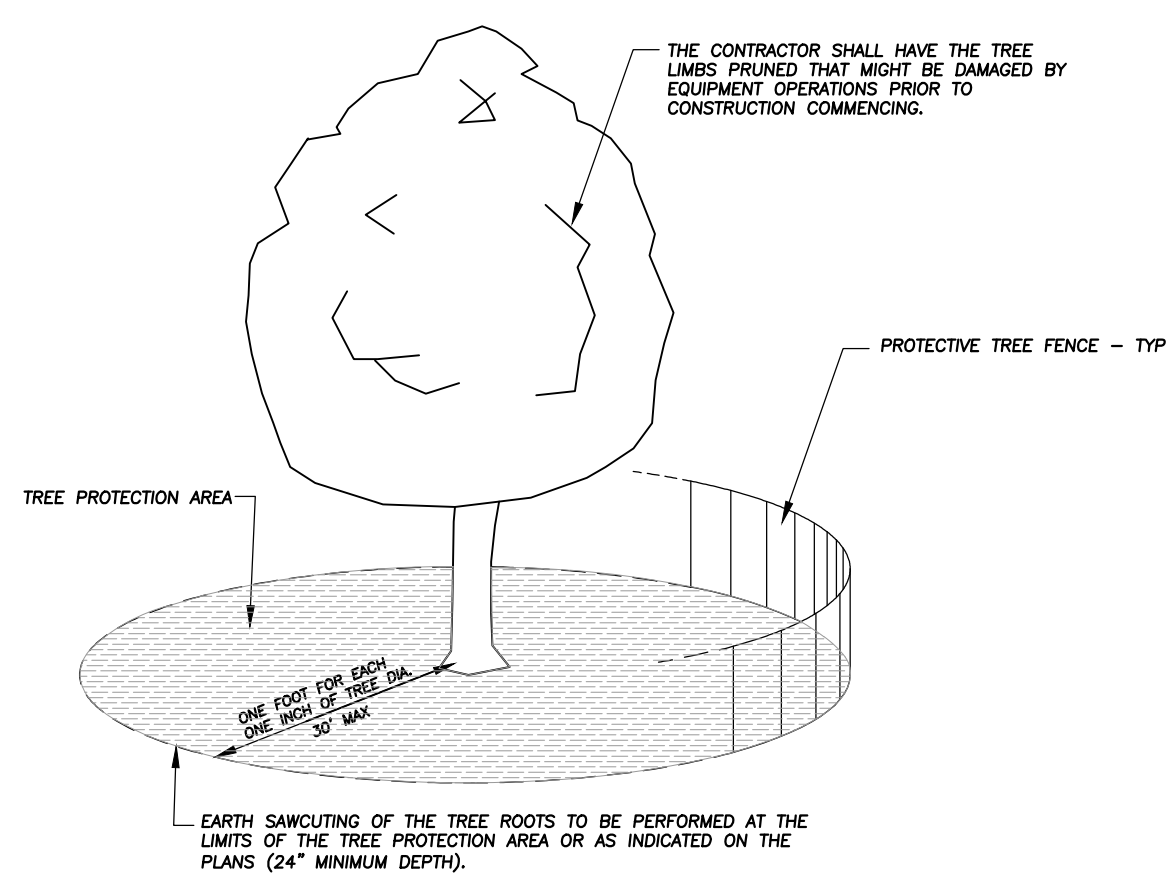


**TREE PRESERVATION NOTES**

1. ANY EXISTING TREES TO BE RETAINED SHALL BE PROTECTED FROM SOIL COMPACTION AND OTHER DAMAGES THAT MAY OCCUR DURING CONSTRUCTION ACTIVITIES BY ERECTING FENCING AROUND SUCH MATERIALS AT A DISTANCE OF 6.5' FROM THE TRUNK.
2. THE CONTRACTOR SHALL VERIFY THE LOCATIONS OF ALL UNDERGROUND UTILITIES PRIOR TO INITIATING PLANTING OPERATIONS. THE CONTRACTOR SHALL REPAIR/ REPLACE AND UTILITY, PAVING, CURBING, ETC., WHICH IS DAMAGED DURING PLANTING AND TREE REMOVAL OPERATIONS.
3. REFER TO PLAT OF SURVEY FOR LEGAL DESCRIPTION, BOUNDARY DIMENSIONS AND EXISTING CONDITIONS.
4. CONTRACTORS MUST VERIFY ALL QUANTITIES AND OBTAIN ALL PROPER PERMITS AND LICENSES FROM THE PROPER AUTHORITIES.
5. LANDSCAPE ARCHITECT IS NOT RESPONSIBLE FOR UNSEEN SITE CONDITIONS.
6. REMOVE ALL DEAD AND DISEASED PLANT MATERIAL FROM SITE AND DISPOSE OF PROPERLY.
7. PRUNE AND FERTILIZE ALL EXISTING VEGETATION TO REMAIN ON SITE.
8. TREE SYMBOL WITH NUMBER INDICATES EXISTING TREE TO REMAIN.
9. TREE SYMBOL WITH NUMBER AND AN "X" INDICATES EXISTING TREE TO BE REMOVED.

**EXISTING TREE INVENTORY**

TREE #	BOTANICAL NAME	COMMON NAME	TREE SIZE	CONDITION	COMMENTS
1	Thuja occidentalis	Arborvitae	15' Ht	Good	
2	Picea pungens glauca	Blue Spruce	12' Cal	Fair	Curved Trunk
3	Picea pungens glauca	Blue Spruce	10' Cal	Good	
4	Thuja occidentalis	Arborvitae	15' Ht	Good	
5	Picea pungens glauca	Blue Spruce	9' Cal	Good	
6	Gymnocladus dioicus 'espresso'	Kentucky Coffee Tree	6' Cal	Good	Parkway Tree
7	Gymnocladus dioicus 'espresso'	Kentucky Coffee Tree	6' Cal	Good	Parkway Tree
8	Gymnocladus dioicus 'espresso'	Kentucky Coffee Tree	6' Cal	Good	Parkway Tree
9	Picea pungens glauca	Blue Spruce	10' Cal	Good	



- NOTES:**
1. A TREE PROTECTION AREA SHALL BE ESTABLISHED AROUND A TREE A DISTANCE OF ONE FOOT FOR EACH ONE INCH OF TREE DIAMETER, UP TO A MAXIMUM OF 30 FEET.
  2. PROTECTIVE TREE FENCE SHALL BE INSTALLED AT THE LIMITS OF THE TREE PROTECTION AREA. THE FENCE SHALL BE HIGH ENOUGH SO AS TO BE VISIBLE TO ALL CONSTRUCTION PERSONNEL.
  3. GRADE CHANGES, UTILITY TRENCHES, STORAGE OF CONSTRUCTION MATERIAL, DUMPING OF WASTE, OR OPERATION OR STORAGE OF ANY EQUIPMENT SHALL NOT BE ALLOWED WITHIN THE TREE PROTECTION AREA.
  4. AUGURING IS REQUIRED IF A UTILITY MUST BE INSTALLED WITHIN THE TREE PROTECTION AREA. AUGURED UTILITIES MUST BE A MINIMUM OF 24 INCHES BELOW GRADE.
  5. ALL TREES TO BE SAVED WHICH HAVE BEEN SUBJECTED TO CONSTRUCTION ACTIVITY WITHIN THE TREE PROTECTION AREA SHOULD BE SELECTIVELY THINNED 10% BY AN ARBORIST SKILLED AT THE SELECTIVE THINNING PROCEDURE. NONE OF THE TREES SHALL BE TOPPED, HEADED BACK, SKINNED (REMOVAL OF THE INTERIOR BRANCHES), OR CLIMBED WITH SPIKES. ALL DEAD WOOD SHOULD BE REMOVED TO AVOID HAZARD.
  6. IT IS RECOMMENDED THAT FOLLOWING CONSTRUCTION, TREES BE MAINTAINED IN THEIR NATIVE CONDITION. NO LAWN SHOULD BE PLACED AROUND THE TREES. IT IS RECOMMENDED THAT THE AREA BE MULCHED WITH 2 INCHES OF DECOMPOSED LEAVES AND 2 INCHES OF WOOD CHIPS OR BARK.

City of Naperville <b>STANDARD                  DETAIL</b>	LANDSCAPE 10 <b>TREE PROTECTION</b> REVISED: 08/01/2018	<b>790.10</b> SHEET 1 OF 1
	CITY OF NAPERVILLE TREE PROTECTION DETAIL	

1 Not To Scale 329383-03

135 S JEFFERSON ST, SUITE 135  
 CHICAGO, ILLINOIS 60661  
 PHONE: (312) 463-0551  
 FAX: (847) 223-4864  
 EMAIL: INFO@EEA-LTD.COM  
 PROFESSIONAL DESIGN FIRM  
 LICENSE NO. 184-003220  
 EXPIRES: 04/30/2021

**NAPERVILLE  
 MICRO-UNIT APARTMENT**  
 1350 E. Ogden Ave.  
 Naperville, Illinois

Reserved for Seal:  
 Expiration Date: \_\_\_\_\_

No.	Date	Description
1	07/16/19	Issued For Zoning
2	09/20/19	Issued For Zoning Revisions
3	10/11/19	Issued For Zoning Revisions #2

© ERIKSSON ENGINEERING ASSOCIATES, LTD., 2019  
 THIS PLAN & DESIGN ARE THE PROPERTY OF ERIKSSON ENGINEERING ASSOCIATES, LTD. NO REPRODUCTION OR PARTIAL OR WHOLE REUSE IS PERMITTED WITHOUT THE WRITTEN CONSENT OF ERIKSSON ENGINEERING ASSOCIATES, LTD.

Design By: SSG Date: 07/12/19  
 Approved By: SSG Project No.: 0000.00

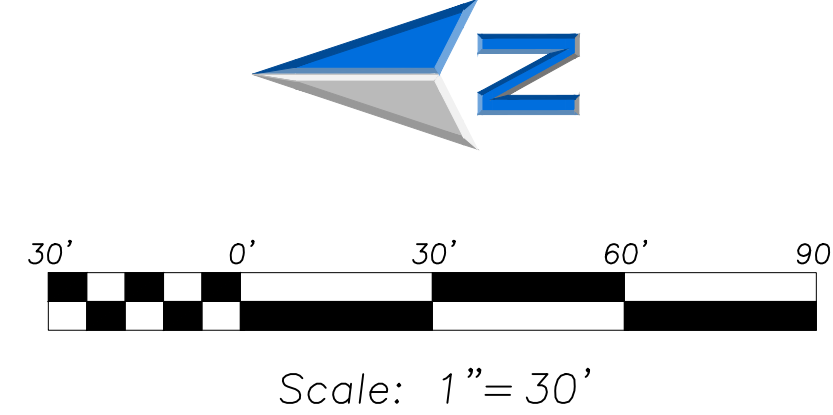
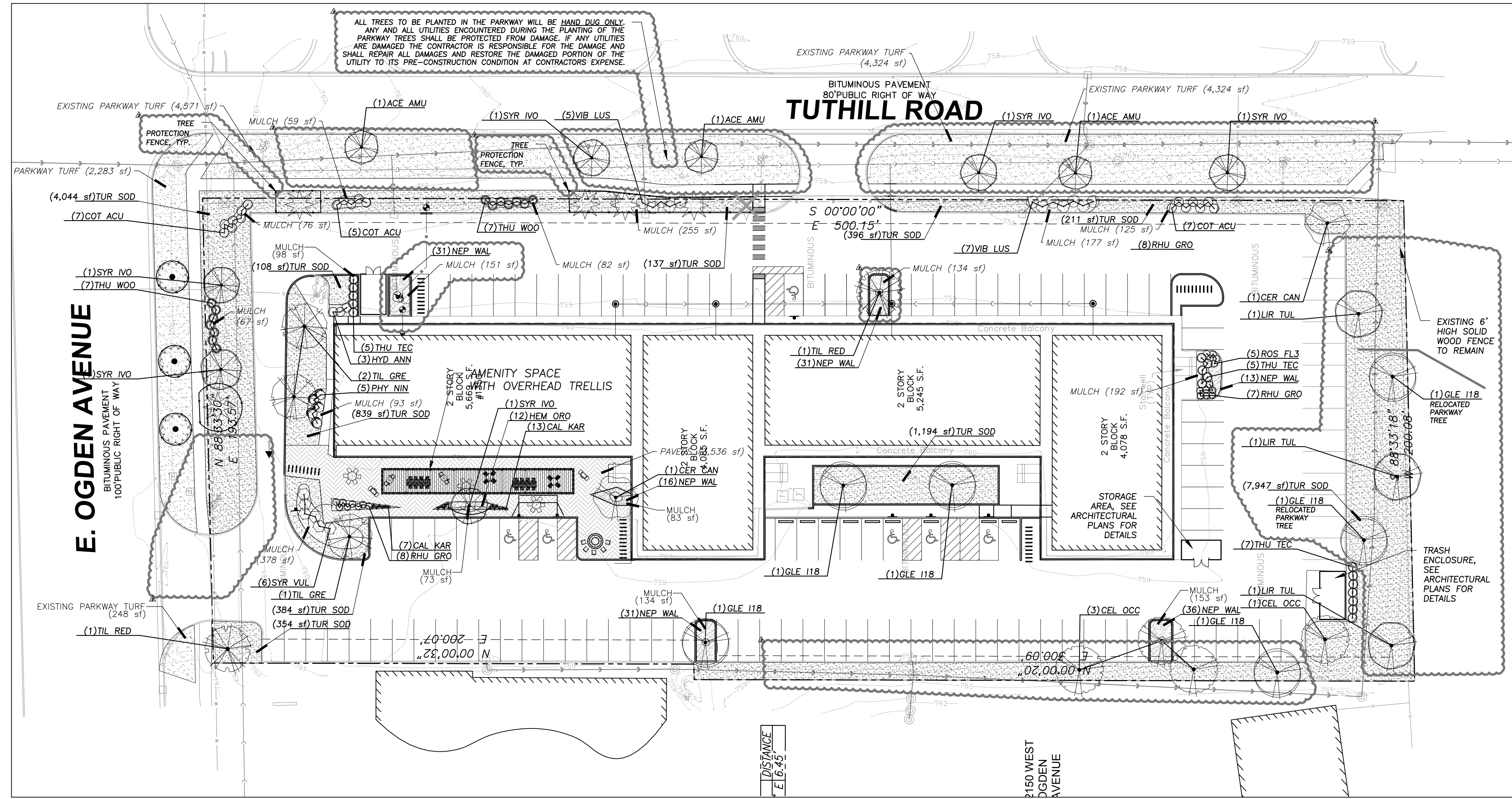
Sheet Title:  
**TREE  
 PRESERVATION  
 PLAN**

Sheet No:  
**TP100**

**J.U.L.I.E.**  
 Note: The exact location of all utilities shall be verified by the contractor prior to construction activities. For utility locations call: J.U.L.I.E. 1 (800) 892-0123



EEA - x:\Jeff\LB - 1350 E. Ogden Ave - Naperville\Drawings\Landscapes\Plan.dwg  
 Plotted: 10/09/19 @ 9:34am By: sgregory



**LANDSCAPE NOTES:**

1. PLANT QUALITIES SHOWN IN THE PLANT SCHEDULE ARE FOR CONVENIENCE ONLY. THE CONTRACTOR IS RESPONSIBLE FOR PROVIDING AND INSTALLING ALL MATERIALS SHOWN ON THE PLAN AND SHOULD NOT RELY ON THE PLANT SCHEDULE FOR DETERMINING QUALITIES.
2. ALL PLANT MATERIALS SHALL BE NURSERY GROWN STOCK AND SHALL BE FREE FROM ANY DEFORMITIES, DISEASES OR INSECT DAMAGE. ANY MATERIALS WITH DAMAGED OR CROOKED/DISFIGURED LEADERS, BARK ABRASION, SUNSCALD, INSECT DAMAGE, ETC. ARE NOT ACCEPTABLE AND WILL BE REJECTED. TREES WITH MULTIPLE LEADERS WILL BE REJECTED UNLESS CALLED OUT IN THE PLANT SCHEDULE AS MULTI-STEM.
3. ALL LANDSCAPE IMPROVEMENTS SHALL MEET MUNICIPALITY REQUIREMENTS AND GUIDELINES, WHICH SHALL BE VERIFIED BY MUNICIPAL AUTHORITIES.
4. ALL PLANTING OPERATIONS SHALL BE COMPLETED IN ACCORDANCE WITH STANDARD HORTICULTURAL PRACTICES. THIS MAY INCLUDE, BUT NOT BE LIMITED TO, PROPER PLANTING BED AND TREE PIT PREPARATION, PLANTING MIX, PRUNING, STAKING AND GUYING, WRAPPING, SPRAYING, FERTILIZATION, PLANTING AND ADEQUATE MAINTENANCE OF MATERIALS DURING CONSTRUCTION ACTIVITIES.
5. ALL PLANT MATERIALS SHALL BE INSPECTED AND APPROVED BY THE LANDSCAPE ARCHITECT PRIOR TO INSTALLATION. ANY MATERIALS INSTALLED WITHOUT APPROVAL MAY BE REJECTED.
6. THE CONTRACTOR SHALL GUARANTEE PLANT MATERIALS FOR A PERIOD OF ONE YEAR FROM DATE OF ACCEPTANCE BY OWNER. THE CONTRACTOR SHALL OUTLINE PROPER MAINTENANCE PROCEDURES TO THE OWNER AT THE TIME OF ACCEPTANCE. DURING THE GUARANTEE PERIOD, DEAD OR DISEASED MATERIALS SHALL BE REPLACED AT NO COST TO THE OWNER. AT THE END OF THE GUARANTEE PERIOD THE CONTRACTOR SHALL OBTAIN FINAL ACCEPTANCE FROM THE OWNER.
7. ANY EXISTING TREES TO BE RETAINED SHALL BE PROTECTED FROM SOIL COMPACTION AND OTHER DAMAGES THAT MAY OCCUR DURING CONSTRUCTION ACTIVITIES BY ERECTING FENCING AROUND SUCH MATERIALS AT A DISTANCE OF 8.5' FROM THE TRUNK.
8. ALL GRASS, CLUMPS, OTHER VEGETATION, DEBRIS, STONES, ETC.. SHALL BE RAKED OR OTHERWISE REMOVED FROM PLANTING AND LAWN AREAS PRIOR TO INITIATION OF INSTALLATION PROCEDURES.
9. THE CONTRACTOR SHALL VERIFY THE LOCATIONS OF ALL UNDERGROUND UTILITIES PRIOR TO INITIATING PLANTING OPERATIONS. THE CONTRACTOR SHALL REPAIR/ REPLACE AND UTILITY, PAVING, CURBING, ETC.. WHICH IS DAMAGED DURING PLANTING OPERATIONS.
10. SIZE AND GRADING STANDARDS OF PLANT MATERIALS SHALL CONFORM TO THE LATEST EDITION OF ANSI Z60.1, AMERICAN STANDARDS FOR NURSERY STOCK, BY THE AMERICAN NURSERY & LANDSCAPE ASSOCIATION.
11. REFER TO PLAT OF SURVEY FOR LEGAL DESCRIPTION, BOUNDARY DIMENSIONS AND EXISTING CONDITIONS.
12. ALL PLANT MATERIAL ON THIS PLANTING PLAN REPRESENTS THE INTENTION AND INTENSITY OF THE PROPOSED LANDSCAPE MATERIAL. THE EXACT SPECIES AND LOCATIONS MAY VARY IN THE FIELD DO TO MODIFICATIONS IN THE SITE IMPROVEMENTS AND THE AVAILABILITY OF PLANT MATERIAL AT THE TIME OF INSTALLATION. ANY SUCH CHANGES MUST FIRST BE APPROVED BY THE VILLAGE IN WRITING.
13. ALL PLANT MATERIAL SHALL BE PLANTED WITH A MINIMUM OF SIX INCHES OF ORGANIC SOIL AND MULCHED WITH A SHREDDED BARK MATERIAL TO A MINIMUM 3" DEPTH.
14. ALL BEDS SHALL BE EDGED, HAVE WEED PREEMERGENTS APPLIED AT THE RECOMMENDED RATE.
15. ALL PARKWAYS AND PARKING LOT ISLANDS SHALL HAVE LAWN ESTABLISHED WITH SEED AS A GROUND COVER, UNLESS OTHERWISE NOTED.
16. ALL LAWN AREAS ON THIS PLAN SHALL BE GRADED SMOOTH AND TOPPED WITH AT LEAST 4" OF TOPSOIL. ALL LAWN AREAS TO BE ESTABLISHED USING SEED AND BLANKET UNLESS OTHERWISE NOTED. BLANKET TO BE S75 OR APPROVED EQUAL.
17. THIS LANDSCAPE PLAN ASSUMES THE SITE WILL BE PREPARED WITH TOP SOIL SUITABLE FOR THE ESTABLISHMENT OF THE LANDSCAPE MATERIAL PRESENTED ON THIS PLAN. IF ADDITIONAL TOP SOIL IS REQUIRED IT IS UP TO THE LANDSCAPE CONTRACTOR ON THE PROJECT TO PROVIDE, SPREAD AND PREPARE THE SITE AS NEEDED FOR THE IMPLEMENTATION OF THIS LANDSCAPE PLAN.
18. CONTRACTORS MUST VERIFY ALL QUANTITIES AND OBTAIN ALL PROPER PERMITS AND LICENSES FROM THE PROPER AUTHORITIES.
19. ALL MATERIAL MUST MEET INDUSTRY STANDARDS AND THE LANDSCAPE ARCHITECT HAS THE RIGHT TO REFUSE ANY POOR MATERIAL OR WORKMANSHIP.
20. LANDSCAPE ARCHITECT IS NOT RESPONSIBLE FOR UNSEEN SITE CONDITIONS.
21. ALL PLANTINGS SHALL BE SPACED EQUAL DISTANT, BACK FILLED WITH AMENDED SOIL IN A HOLE TWICE THE ROOTBALL DIAMETER, WATERED, FERTILIZED, PRUNED, AND HAVE ALL TAGS AND ROPES REMOVED.
22. TREES SHALL BE STAKED AND GUYED, AND HAVE A WATERING SAUCER AT BASE.
23. ALL BEDS TO BE BERMED 12" TO 24" ABOVE GRADE AND MEET DRAINAGE REQUIREMENTS.
24. ALL RESTORATION WITHIN THE LIMITS OF THE RIGHT-OF-WAY SHALL BE COMPLETED WITH TOPSOIL AND SOD.
25. PROPOSED TREES SHALL BE HORIZONTALLY SEPARATED FIVE (5) FEET OR GREATER FROM EXISTING AND PROPOSED UNDERGROUND SANITARY SEWERS AND WATER MAINS AND TEN (10) FEET OR GREATER FROM EXISTING AND PROPOSED UTILITY STRUCTURES SUCH AS VALVE VAULTS AND FIRE HYDRANTS.
26. ALL TREES TO BE PLANTED IN THE PARKWAY WILL BE HAND DUG ONLY. ANY AND ALL UTILITIES ENCOUNTERED DURING THE PLANTING OF THE PARKWAY TREES SHALL BE PROTECTED FROM DAMAGE. IF ANY UTILITIES ARE DAMAGED THE CONTRACTOR IS RESPONSIBLE FOR THE DAMAGE AND SHALL REPAIR ALL DAMAGES AND RESTORE THE DAMAGED PORTION OF THE UTILITY TO ITS PRE-CONSTRUCTION CONDITION AT CONTRACTORS EXPENSE.

**PLANT SCHEDULE**

	BOTANICAL / COMMON NAME	COND	SIZE	QTY
<b>CANOPY TREES</b>				
CEL OCC	CELTIS OCCIDENTALIS / COMMON HACKBERRY	B & B	2.5" CAL	4
GLE I18	GLADIOLUS TRIACANTHOS INERMIS 'SKYLINE' / THORNLESS SKYLINE HONEYLOCUST	B & B	2.5" CAL	6
LIR TUL	LIRIODENDRON TULIPIFERA / TULIP TREE	B & B	2.5" CAL	3
TIL RED	TILIA AMERICANA 'REDMOND' / REDMOND AMERICAN LINDEN	B & B	2.5" CAL	2
TIL GRE	TILIA CORDATA 'GREENSPIRE' / GREENSPIRE LITTLELEAF LINDEN	B & B	2.5" CAL	3
<b>UNDERSTORY TREES</b>				
ACE AMU	ACER GINNALA / AMUR MAPLE	B & B	2" CAL.	3
CER CAN	CERCIS CANADENSIS / EASTERN REDBUD	B & B	2" CAL.	2
SYR IVO	SYRINGA RETICULATA 'IVORY SILK' / IVORY SILK JAPANESE TREE LILAC	B & B	2" CAL.	6
<b>DECIDUOUS SHRUBS</b>				
COT ACU	COTONEASTER ACUTIFOLIUS / PEKING COTONEASTER	B & B	36" HT.	19
HYD ANN	HYDRANGAEA ARBORESCENS 'ANNABELLE' / ANNABELLE SMOOTH HYDRANGEA	B & B	36" HT.	3
PHY NIN	PHYSCARPUS OPULIFOLIUS 'SUMMER WINE' / SUMMER WINE NINEBARK	CONT.	#5	5
RHU GRO	RHUS AROMATICA 'GRO-LOW' / GRO-LOW FRAGRANT SUMAC	B & B	24" SPREAD	15
ROS FL3	ROSA X 'FLOWER CARPET CORAL' / ROSE	B & B	24" SPREAD	5
SYR VUL	SYRINGA VULGARIS / COMMON LILAC	B & B	36" HT.	6
VIB LUS	VIBURNUM DENTATUM 'CHICAGO LUSTER' / CHICAGO LUSTER ARROWWOOD	B & B	36" HT.	12
<b>EVERGREEN SHRUBS</b>				
THU TEC	THUJA OCCIDENTALIS 'TECHNY' / TECHNY ARBORVITAE	B & B	6' HT.	17
THU WOO	THUJA OCCIDENTALIS 'WOODWARDII' / WOODWARD ARBORVITAE	B & B	30" HT.	14
<b>GRASSES</b>				
CAL KAR	CALAMAGROSTIS X ACUTIFLORA 'KARL FOERSTER' / FEATHER REED GRASS	CONT.	#1	20
<b>GROUND COVERS</b>				
HEM ORO	HEMEROCALLIS X 'STELLA DE ORO' / STELLA DE ORO DAYLILY	CONT.	#1	12
NEP WAL	NEPETA X FAASSENII 'WALKERS LOW' / WALKERS LOW CATMINT	CONT.	#1	158
TUR SOD	TURF SOD / DROUGHT TOLERANT FESCUE BLEND	SOD	S.F.	15,615 SF

**SITE MATERIALS SCHEDULE**

	PAVERS	3,536 SF
	EXISTING PARKWAY TURF	11,426 SF
	MULCH	2,332 SF

**ERIKSSON ENGINEERING ASSOCIATES, LTD.**  
 135 S JEFFERSON ST, SUITE 135  
 CHICAGO, ILLINOIS 60661  
 PHONE: (312) 463-0551  
 FAX: (847) 223-4864  
 EMAIL: INFO@EEA-LTD.COM  
 PROFESSIONAL DESIGN FIRM  
 LICENSE NO. 184-003220  
 EXPIRES: 04/30/2021

**NAPERVILLE MICRO-UNIT APARTMENT**  
 1350 E. Ogden Ave.  
 Naperville, Illinois

Reserved for Seal:

Expiration Date: \_\_\_\_\_

No.	Date	Description
1	07/16/19	Issued For Zoning
2	09/20/19	Issued For Zoning Revisions
3	10/11/19	Issued For Zoning Revisions #2

© ERIKSSON ENGINEERING ASSOCIATES, LTD. 2019  
 THIS PLAN & DESIGN ARE THE PROPERTY OF ERIKSSON ENGINEERING ASSOCIATES, LTD. NO REPRODUCTION OR USE OF THESE PLANS IS PERMITTED WITHOUT THE WRITTEN CONSENT OF ERIKSSON ENGINEERING ASSOCIATES, LTD.

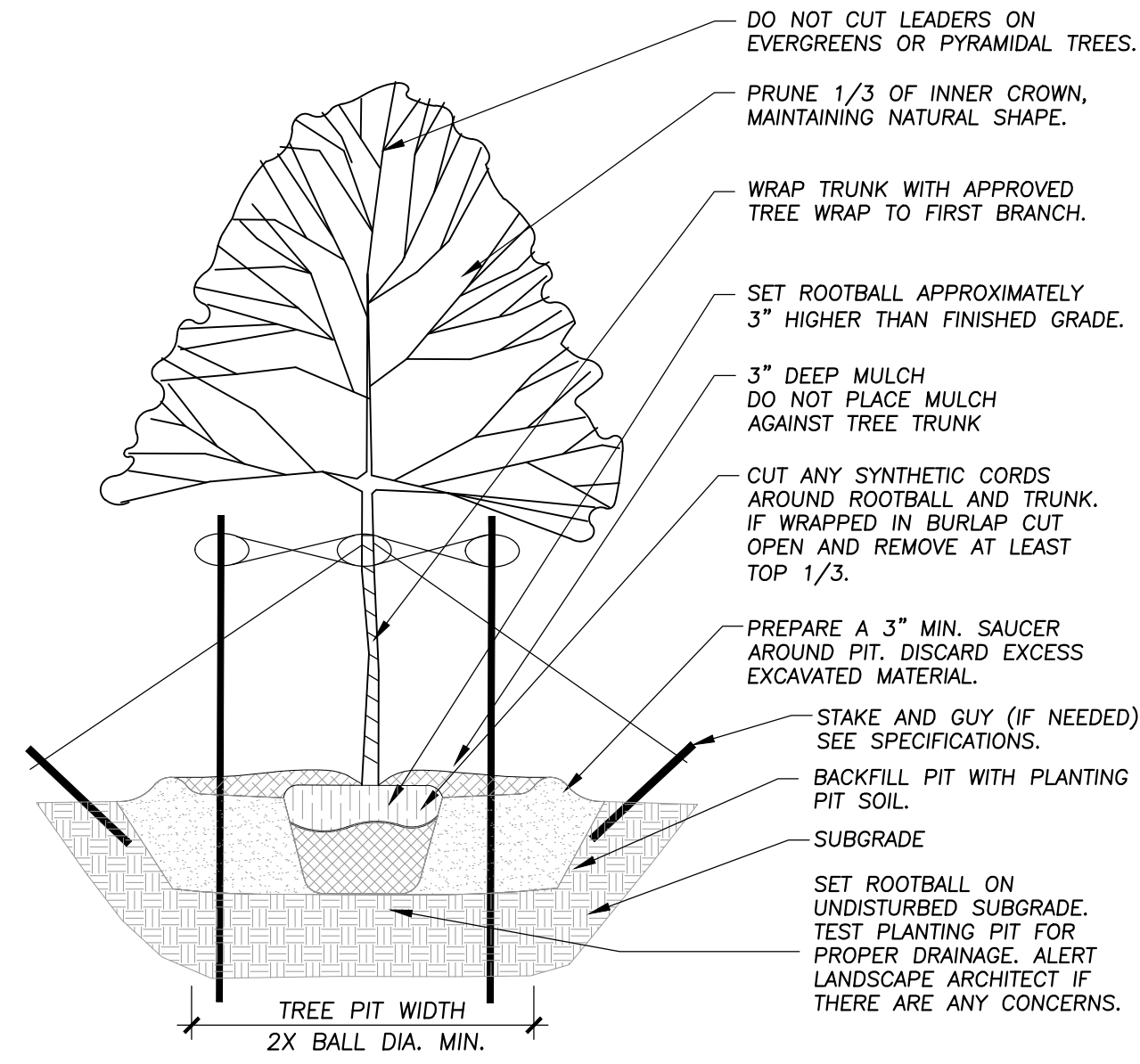
Design By: SSG Date: 07/12/19  
 Approved By: SSG Project No: 0000.00

**LANDSCAPE PLAN**

Sheet No: **L100**

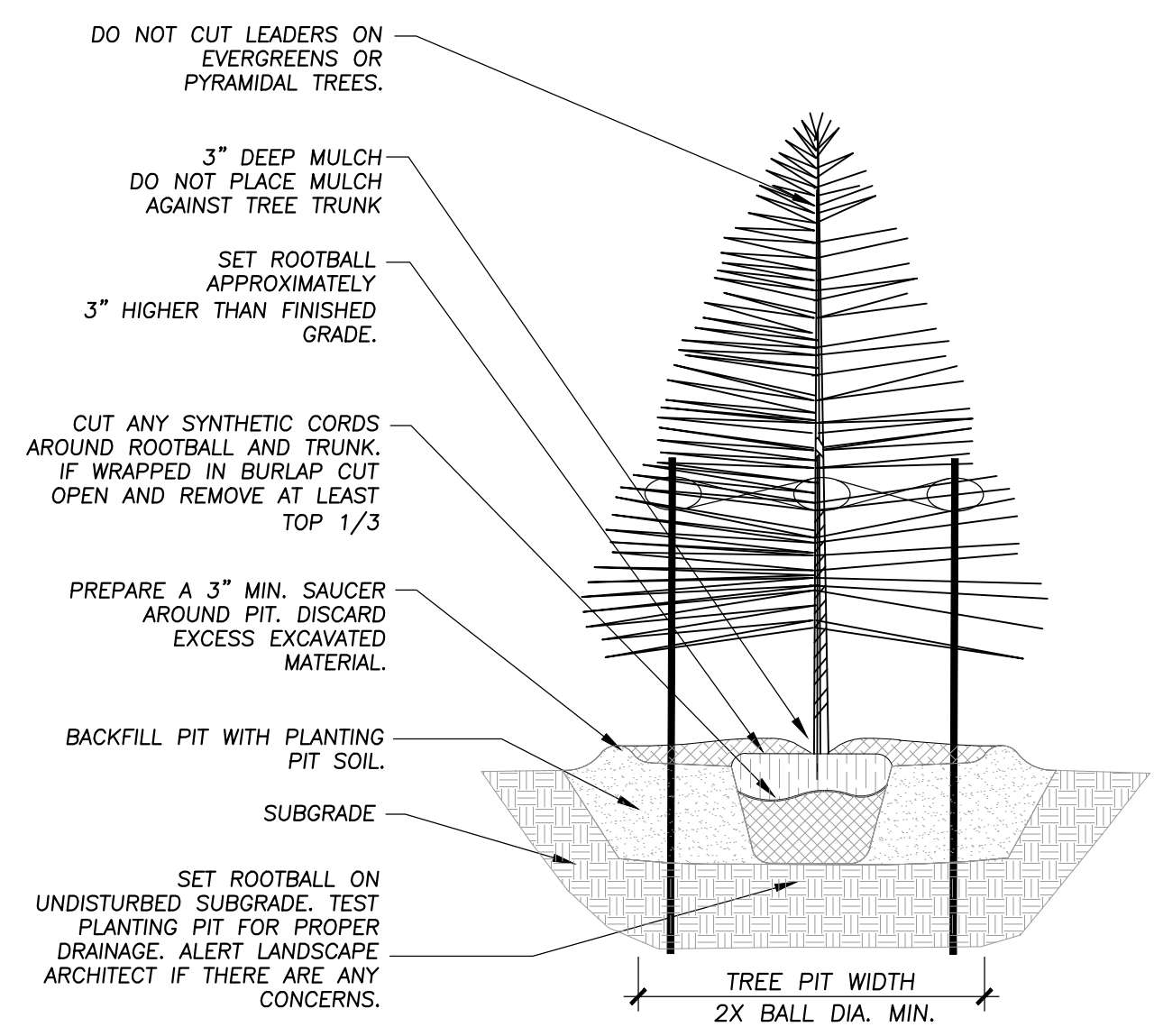
**J.U.L.I.E.**  
 Note: The exact location of all utilities shall be verified by the contractor prior to construction activities. For utility locations call: J.U.L.I.E. 1 (800) 892-0123





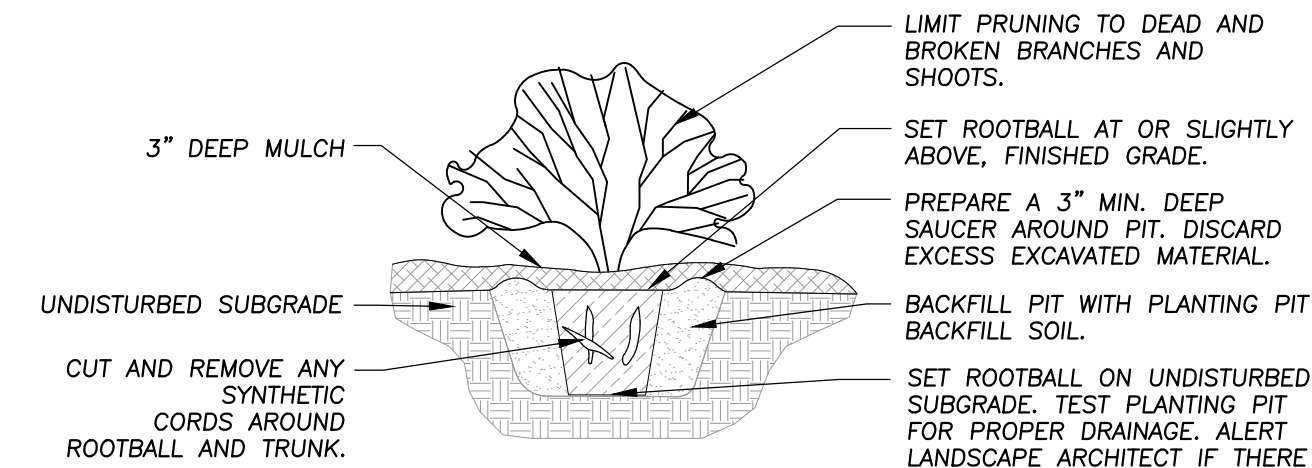
1 TREE PLANTING DETAIL

Not To Scale 329343-01



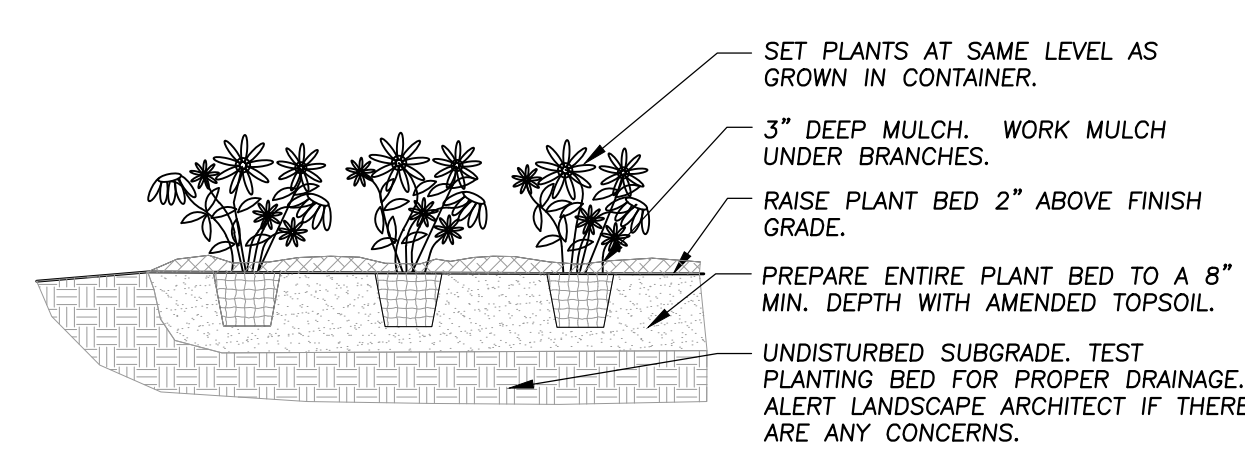
2 EVERGREEN TREE PLANTING DETAIL

NOT TO SCALE 329343-02



3 SHRUB PLANTING DETAIL

Not To Scale 329333-01



4 ANNUAL, PERENNIAL, & GROUNDCOVER DETAIL

Not To Scale 329301-03



**ERIKSSON**  
**ENGINEERING**  
**ASSOCIATES, LTD.**

135 S JEFFERSON ST, SUITE 135  
CHICAGO, ILLINOIS 60661  
PHONE: (312) 463-0551  
FAX: (847) 223-4864  
EMAIL: INFO@EEA-LTD.COM  
PROFESSIONAL DESIGN FIRM  
LICENSE NO. 184-003220  
EXPIRES: 04/30/2021

**NAPERVILLE**  
**MICRO-UNIT APARTMENT**  
1350 E. Ogden Ave.  
Naperville, Illinois

Reserved for Seal:

Expiration Date: \_\_\_\_\_

No.	Date	Description
1	07/16/19	Issued For Zoning
2	09/20/19	Issued For Zoning Revisions
	10/11/19	Issued For Zoning Revisions #2

© ERIKSSON ENGINEERING ASSOCIATES, LTD. 2019  
THIS PLAN & DESIGN ARE THE PROPERTY OF ERIKSSON ENGINEERING ASSOCIATES, LTD. NO REPRODUCTION OR ANY PART OF THESE PLANS IS PERMITTED WITHOUT THE WRITTEN CONSENT OF ERIKSSON ENGINEERING ASSOCIATES, LTD.

Design By: SSG Date: 07/12/19  
Approved By: SSG Project No. 0000.00

Sheet Title:  
**LANDSCAPE**  
**DETAILS**

Sheet No:  
**L200**

**J.U.L.I.E.**  
Note: The exact location of all utilities shall be verified by the contractor prior to construction activities. For utility locations call: J.U.L.I.E. 1 (800) 892-0123

EEA - X:\Jeff\LBB - 1350 E. Ogden Ave - Naperville\Drawings\Landscapes\_Plan.dwg  
Plotted: 10/09/19 @ 9:35am By: sgregory