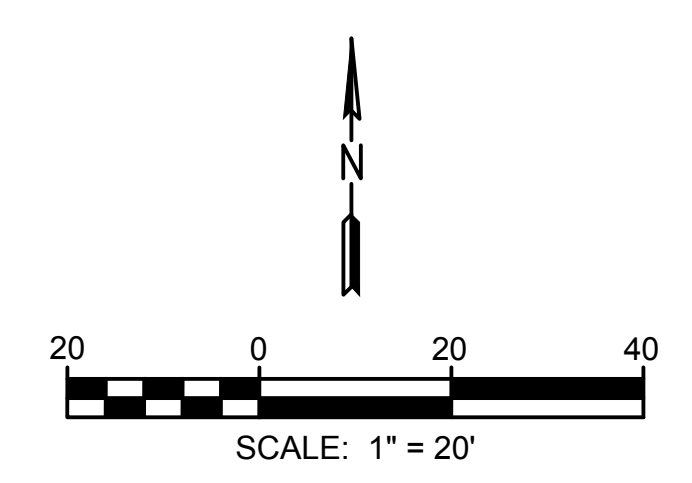
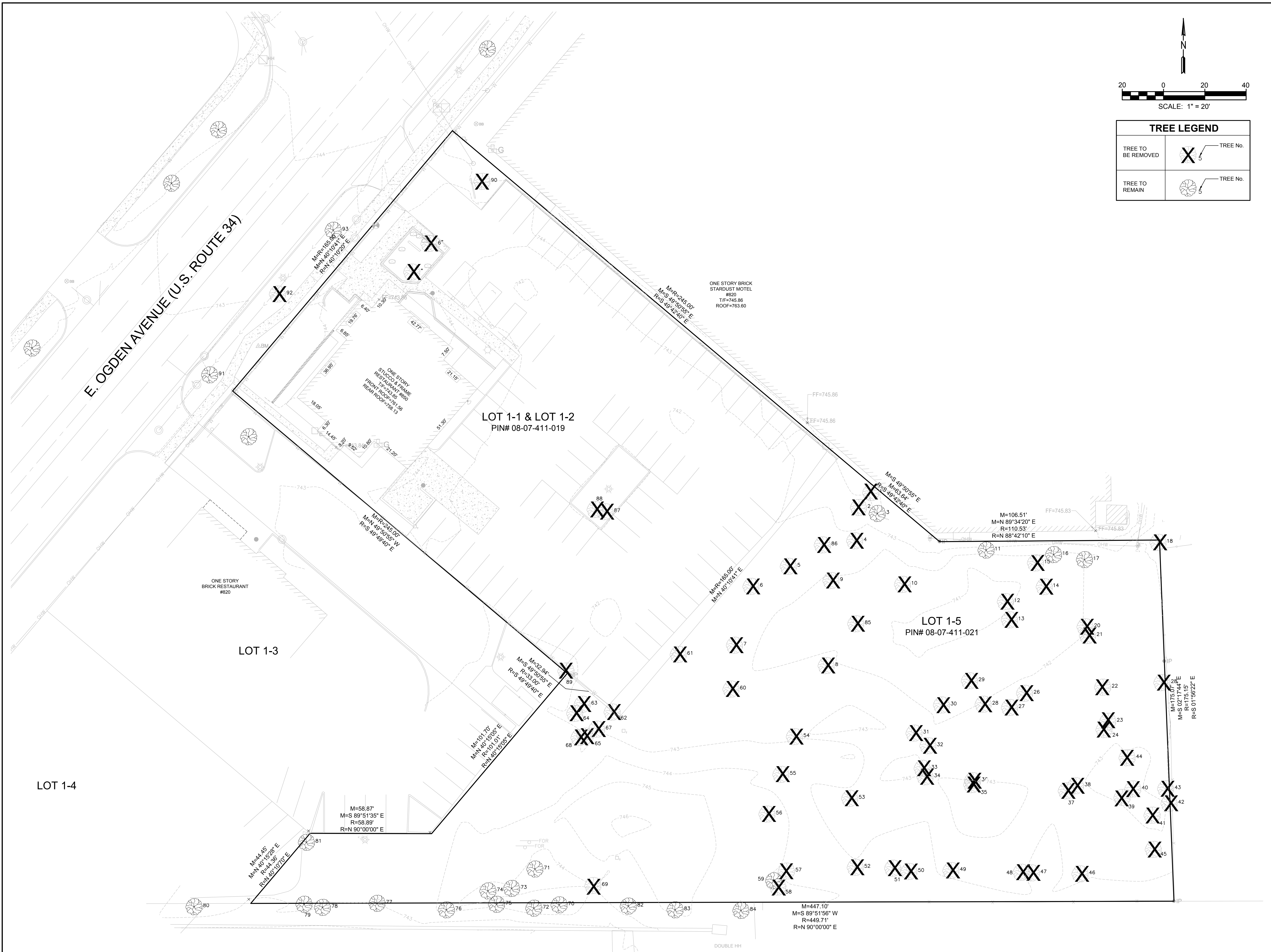


T:\7699\000\Sheet\Site\Preliminary\Engineering\7699_LP1.dwg 10-19-20



TREE LEGEND	
TREE TO BE REMOVED	X TREE No.
TREE TO REMAIN	(Circle) TREE No.

KNIGHT
 Engineers & Architects
 Knight E/A, Inc.
 631 E. Boughton Road
 Suite 205
 Bolingbrook, IL 60440
 Phone: (708) 342-1250
 knightea.com

PROJECT:
JET BRITE CAR WASH
 850 E. OGDEN AVE.
 NAPERVILLE, IL 60563

CLIENT:
JET BRITE SERVICES, INC.
 590 KILDEER DR.
 BOLINGBROOK, IL 60440

TREE PRESERVATION PLAN

PROJECT #: 7699.01 DATE: 10-19-20

LP-1

© COPYRIGHT 2020 KNIGHT E/A INC. ALL RIGHTS RESERVED.

PROJECT:		780 and 850 East Ogden Avenue - Jet Brite			DATE: 9/15/2020
TREE SURVEY					
TREE TAG ID	SIZE [INCH]	NAME	HEALTH1	STRUCTURE2	RECOMMENDED ACTION
1	15.0	Siberian elm	Poor	Poor	
2	12.0, 6.5, 5.0	Box elder	Poor	Poor	
3	19.0	American elm	Good	Good	
4	14.5	Siberian elm	Poor	Fair	To be removed
5	13.5	Siberian elm	Fair	Fair	To be removed
6	15.0	Siberian elm	Fair	Good	To be removed
7	14.0	Dead	Dead	Dead	Dead, recommended for removal
8	14.0	Box elder	Good	Fair	To be removed
9	12.0	Siberian elm	Good	Good	To be removed
10	15.5	Dead	Dead	Dead	Dead, recommended for removal
11	18.5	Siberian elm	Fair	Fair	
12	13.0	Siberian elm	Fair	Poor	To be removed
13	13.0	Box elder	Fair	Fair	To be removed
14	16.0	Dead	Dead	Dead	Dead, recommended for removal
15	12.5	Siberian elm	Good	Good	To be removed
16	13.5	Siberian elm	Good	Fair	
17	13.0	American elm	Good	Fair	
18	12.5	American elm	Good	Good	To be removed
19	16.0	Siberian elm	Fair	Fair	
20	13.5	American elm	Fair	Good	To be removed
21	15.0	American elm	Good	Good	To be removed
22	21.0	Siberian elm	Poor	Fair	
23	12.0	Siberian elm	Good	Fair	
24	16.0	Box elder	Good	Good	
25	13.0	White mulberry	Good	Good	
26	15.0	Silver maple	Good	Good	To be removed
27	15.5	American elm	Good	Good	To be removed
28	15.0	Black cherry	Good	Good	To be removed
29	16.0	Silver maple	Good	Fair	To be removed
30	20.0, 8.0	Silver maple	Good	Good	To be removed
31	13.5	Box elder	Fair	Fair	To be removed
32	13.5	Green ash	Poor	Poor	Emerald ash borer infestation, recommended for removal
33	14.0	Box elder	Good	Poor	To be removed
34	13.0	Black cherry	Fair	Good	To be removed
35	16.0	Green ash	Poor	Poor	Emerald ash borer infestation, recommended for removal
36	16.0	Silver maple	Good	Fair	To be removed
37	13.5	Green ash	Poor	Poor	Emerald ash borer infestation, recommended for removal
38	14.0	Siberian elm	Fair	Fair	To be removed
39	16.0, 16.0	Silver maple	Good	Good	
40	15.0	Silver maple	Good	Good	
41	18.0	Silver maple	Good	Good	
42	16.0, 5.5	Silver maple	Good	Good	To be removed
43	15.0	Silver maple	Good	Fair	To be removed
44	12.5, 10.0	Silver maple	Good	Good	
45	12.5	Silver maple	Good	Fair	
46	16.5	Green ash	Poor	Poor	Emerald ash borer infestation, recommended for removal
47	17.0	Green ash	Poor	Poor	Emerald ash borer infestation, recommended for removal
48	15.0	Green ash	Poor	Poor	Emerald ash borer infestation, recommended for removal
49	22.0	American elm	Good	Good	To be removed
50	14.5	Green ash	Poor	Poor	Emerald ash borer infestation, recommended for removal
51	17.5	Green ash	Poor	Poor	Emerald ash borer infestation, recommended for removal
52	14.0	Green ash	Poor	Poor	Emerald ash borer infestation, recommended for removal
53	12.5	Green ash	Poor	Poor	Emerald ash borer infestation, recommended for removal
54	14.0	Green ash	Poor	Poor	Emerald ash borer infestation, recommended for removal
55	12.0	American elm	Poor	Poor	To be removed
56	14.0	Black walnut	Good	Good	To be removed
57	13.0	Dead	Dead	Dead	Dead, recommended for removal

PROJECT:		780 and 850 East Ogden Avenue - Jet Brite			DATE: 9/15/2020
TREE SURVEY					
TREE TAG ID	SIZE [INCH]	NAME	HEALTH1	STRUCTURE2	RECOMMENDED ACTION
58	13.0	Green ash	Poor	Poor	Emerald ash borer infestation, recommended for removal
59	14.0	American elm	Fair	Poor	
60	12.0	American elm	Fair	Fair	To be removed
61	12.0	Box elder	Fair	Fair	To be removed
62	13.0	American elm	Good	Good	To be removed
63	13.5	American elm	Poor	Fair	To be removed
64	16.0, 9.0, 3.0	American elm	Good	Fair	To be removed
65	12.0	American elm	Fair	Fair	To be removed
67	12.0	American elm	Good	Good	To be removed
68	12.0, 5.0	Box elder	Fair	Fair	
69	14.5	Green ash	Poor	Poor	Emerald ash borer infestation, recommended for removal
70	22.0	Siberian elm	Fair	Fair	
71	20.0	Black walnut	Good	Good	
72	19.0	Dead	Dead	Dead	Dead, recommended for removal
73	18.0	Siberian elm	Poor	Poor	
74	18.0	Norway maple	Good	Good	
75	26.0	Siberian elm	Poor	Poor	
76	27.0	Dead	Dead	Dead	Dead, recommended for removal
77	20.0	Siberian elm	Good	Fair	
78	15.5	Siberian elm	Fair	Fair	
79	19.0	Siberian elm	Poor	Poor	
80	20.0	Siberian elm	Fair	Poor	
81	15.0	Siberian elm	Fair	Poor	
82	12.0, 11.0	Common hackberry	Good	Good	
83	23.0	Black walnut	Fair	Good	
84	28.0	Black walnut	Good	Good	
85	12.0	Dead	Dead	Dead	Dead, recommended for removal
86	12.0	Box elder	Good	Good	
87	17.5, 17.5	Siberian elm	Fair	Fair	To be removed
88	20.5	Siberian elm	Fair	Fair	To be removed
89	20.0	Siberian elm	Fair	Poor	
90	13.5	White oak	Fair	Good	
91	3.0	Sugar maple	Good	Good	Parkway tree
92	3.0	Catalpa	Good	Good	Parkway tree
93	3.0	Catalpa	Good	Good	Parkway tree

1The health of a tree is based on the extent to which a tree is reasonably free of signs and symptoms of disease.
2The structure of a tree generally refers to the extent to which a tree has structure and form typical of the species.

TREE PRESERVATION PLAN NOTES:

- PRIOR TO ISSUANCE OF A LAND DEVELOPMENT PERMIT TREE PROTECTION FENCING MUST BE INSTALLED AROUND ALL EXISTING TREES TO BE PRESERVED. FENCING SHALL BE INSTALLED AT THE PERIPHERY OF THE DRIP LINE OF THE TREE TO BE PRESERVED OR A DISTANCE OF ONE FOOT FOR EVERY INCH CALIPER AS MEASURED TWELVE INCHES ABOVE GRADE WHICHEVER IS GREATER. SUCH FENCING SHALL BE SECURELY FASTENED TO METAL FENCE POSTS SPACED A MAXIMUM OF EIGHT FEET APART. SEE DETAIL BELOW.
- ALL SHADED TREE SYMBOLS WITH A LARGE "X" ON THIS TREE RESERVATION PLAN INDICATE EXISTING TREES TO BE REMOVED.
- ALL TREE SYMBOLS ON THIS TREE PRESERVATION PLAN THAT ARE NOT SHADED INDICATE EXISTING TREES TO BE PROTECTED AND PRESERVED IN PLACE.
- A COPY OF THE APPROVED TREE PRESERVATION PLAN SHALL BE PRESENT ON SITE THROUGHOUT THE ENTIRE CONSTRUCTION PROCESS.
- ALL TREE PRESERVATION MEASURES WILL REMAIN IN PLACE AND IN PROPER CONDITION ON THE SITE FOR THE DURATION OF THE CONSTRUCTION PROJECT.

KNIGHT Engineers & Architects
 Knight E/A, Inc.
 631 E. Boughton Road
 Suite 205
 Bolingbrook, IL 60440
 Phone: (708) 342-1250
 knightea.com

PROJECT: **JET BRITE CAR WASH**
 850 E. OGDEN AVE.
 NAPERVILLE, IL 60563
 CLIENT: **JET BRITE SERVICES, INC.**
 590 KILDEER DR.
 BOLINGBROOK, IL 60440

TREE PRESERVATION SCHEDULE

PROJECT #: 7699.01 DATE: 10-19-20

LP-2