

# 248<sup>TH</sup> AVENUE

103<sup>RD</sup> STREET TO 95<sup>TH</sup> STREET

Phase I Study



## City of Naperville

- Ray Fano, P.E. – Project Engineer
- Andy Hynes, P.E., PTOE - Deputy City Engineer / Transportation, Engineering and Development Business Group

# 248<sup>TH</sup> AVENUE

103<sup>RD</sup> STREET TO 95<sup>TH</sup> STREET

Phase I Study

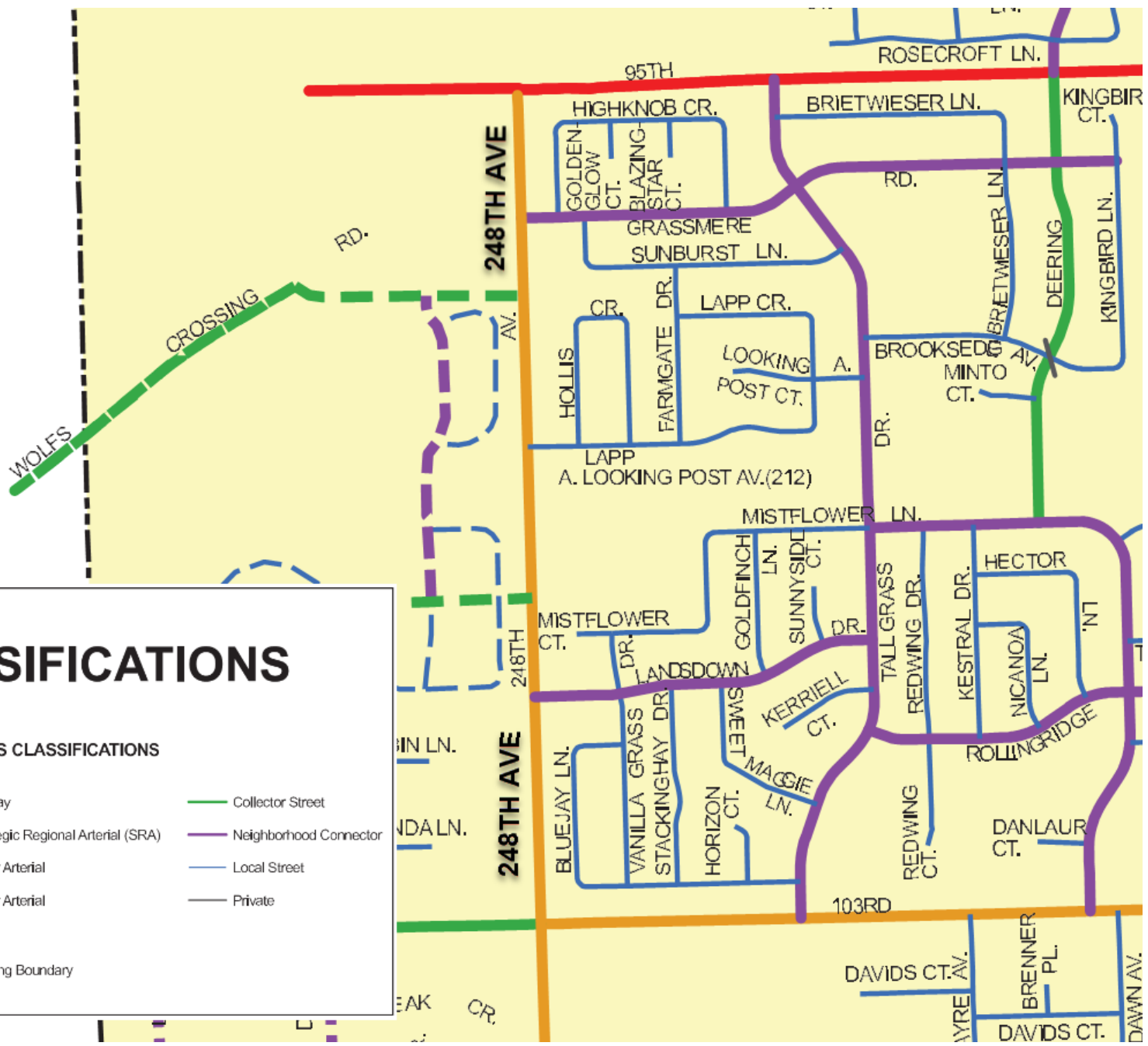
# Project Location



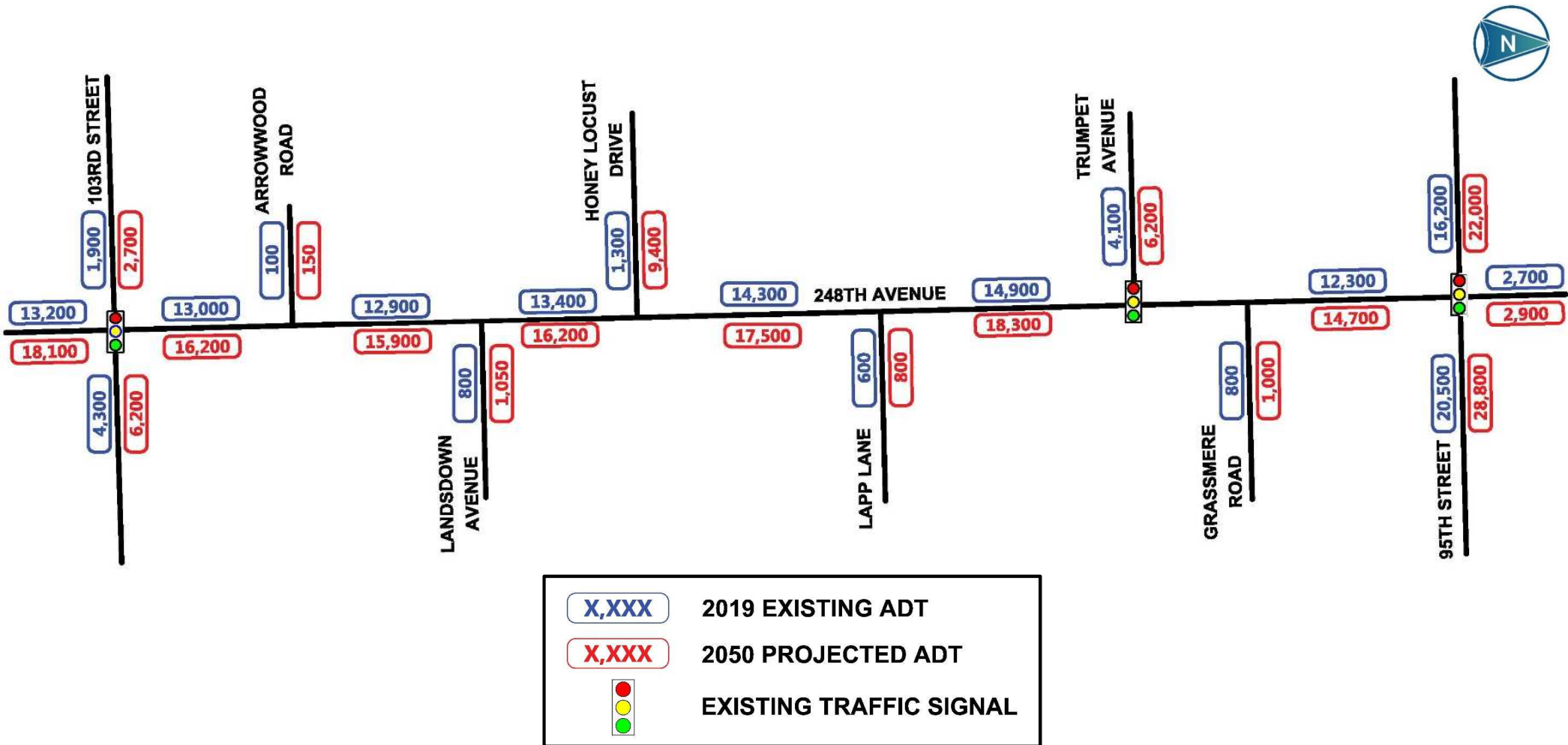


## ROAD CLASSIFICATIONS

PROPOSED CLASSIFICATIONS	PREVIOUS CLASSIFICATIONS	
<span style="color: red;">- - -</span> Major Arterial	<span style="color: brown;">—</span> Tollway	<span style="color: green;">—</span> Collector Street
<span style="color: green;">- - -</span> Collector Street	<span style="color: orange;">—</span> Strategic Regional Arterial (SRA)	<span style="color: purple;">—</span> Neighborhood Connector
<span style="color: purple;">- - -</span> Neighborhood Connector	<span style="color: red;">—</span> Major Arterial	<span style="color: blue;">—</span> Local Street
<span style="color: blue;">- - -</span> Local Street	<span style="color: orange;">—</span> Minor Arterial	<span style="color: grey;">—</span> Private
<span style="color: grey;">- - -</span> Private		
	<span style="border: 1px solid black; display: inline-block; width: 15px; height: 10px;"></span> Planning Boundary	

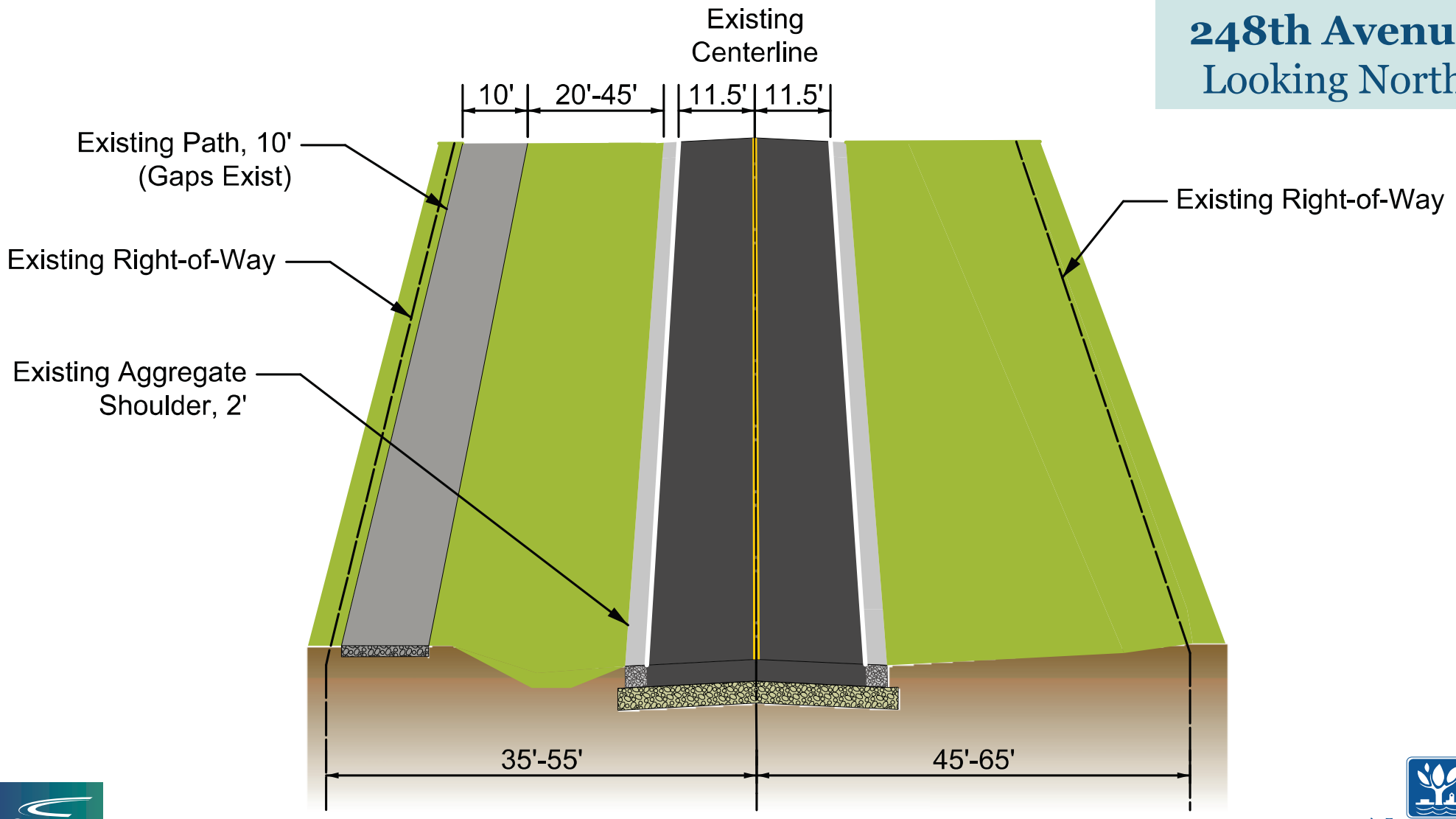


# Existing and 2050 Traffic Volumes

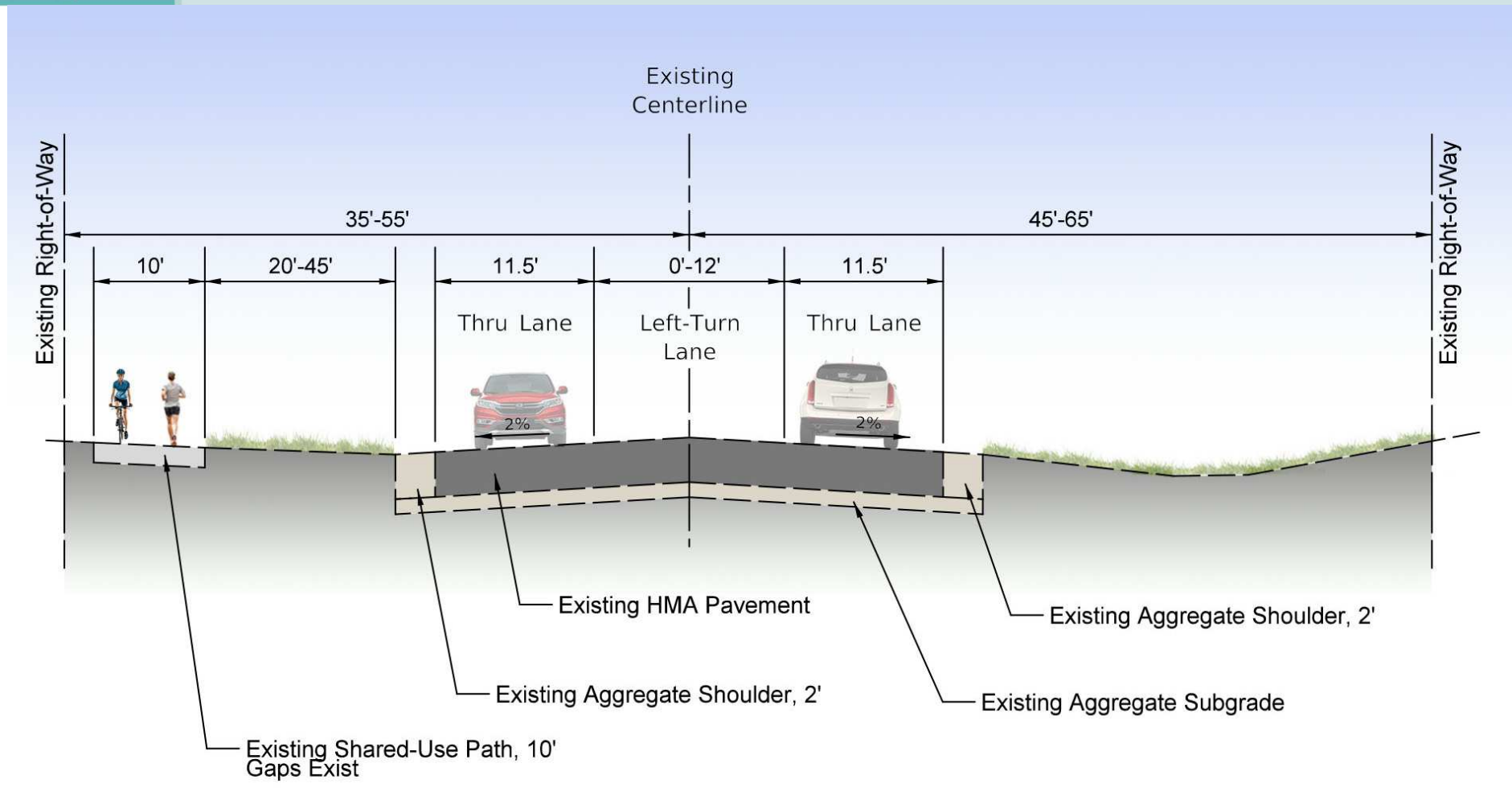


# Existing Typical Section

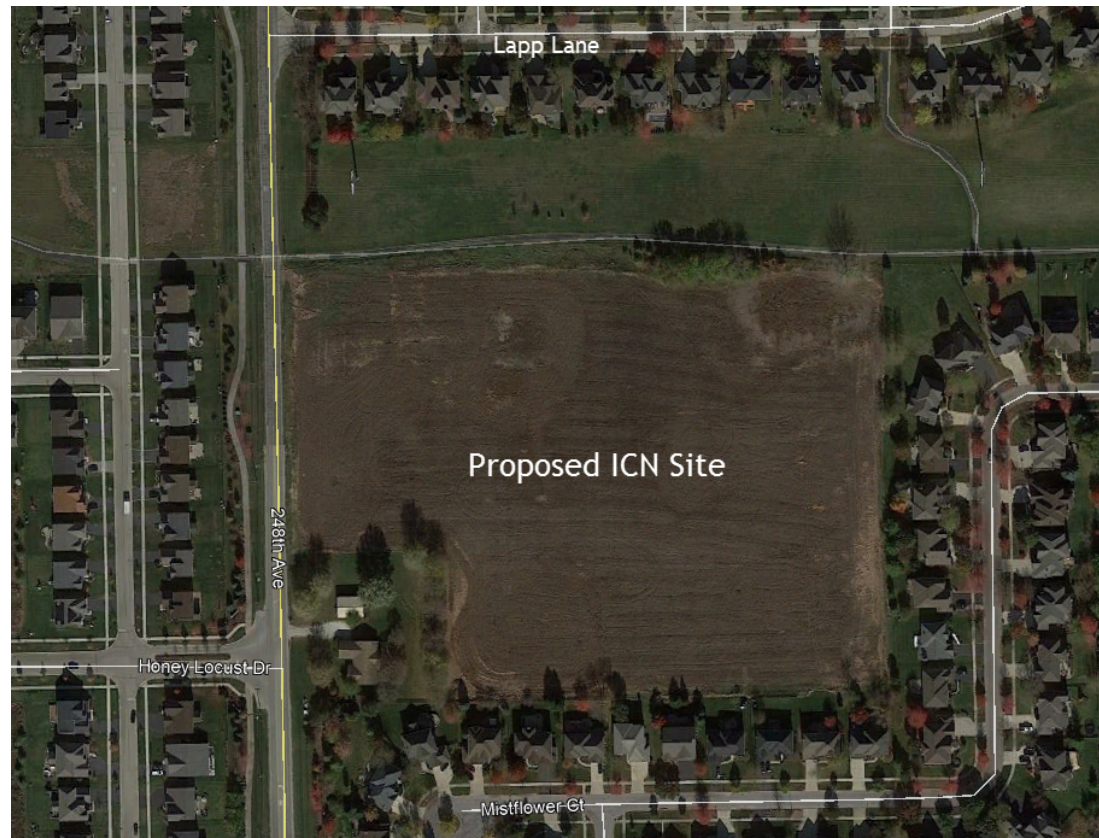
**248th Avenue**  
Looking North



# Existing Typical Section



### Islamic Center of Naperville (ICN) Project



- Received many comments regarding the ICN Site during PIMs
- 248<sup>th</sup> Avenue Road Widening Project started way before ICN
- Project will be able to accommodate the ICN traffic

# 248<sup>TH</sup> AVENUE

103<sup>RD</sup> STREET TO 95<sup>TH</sup> STREET

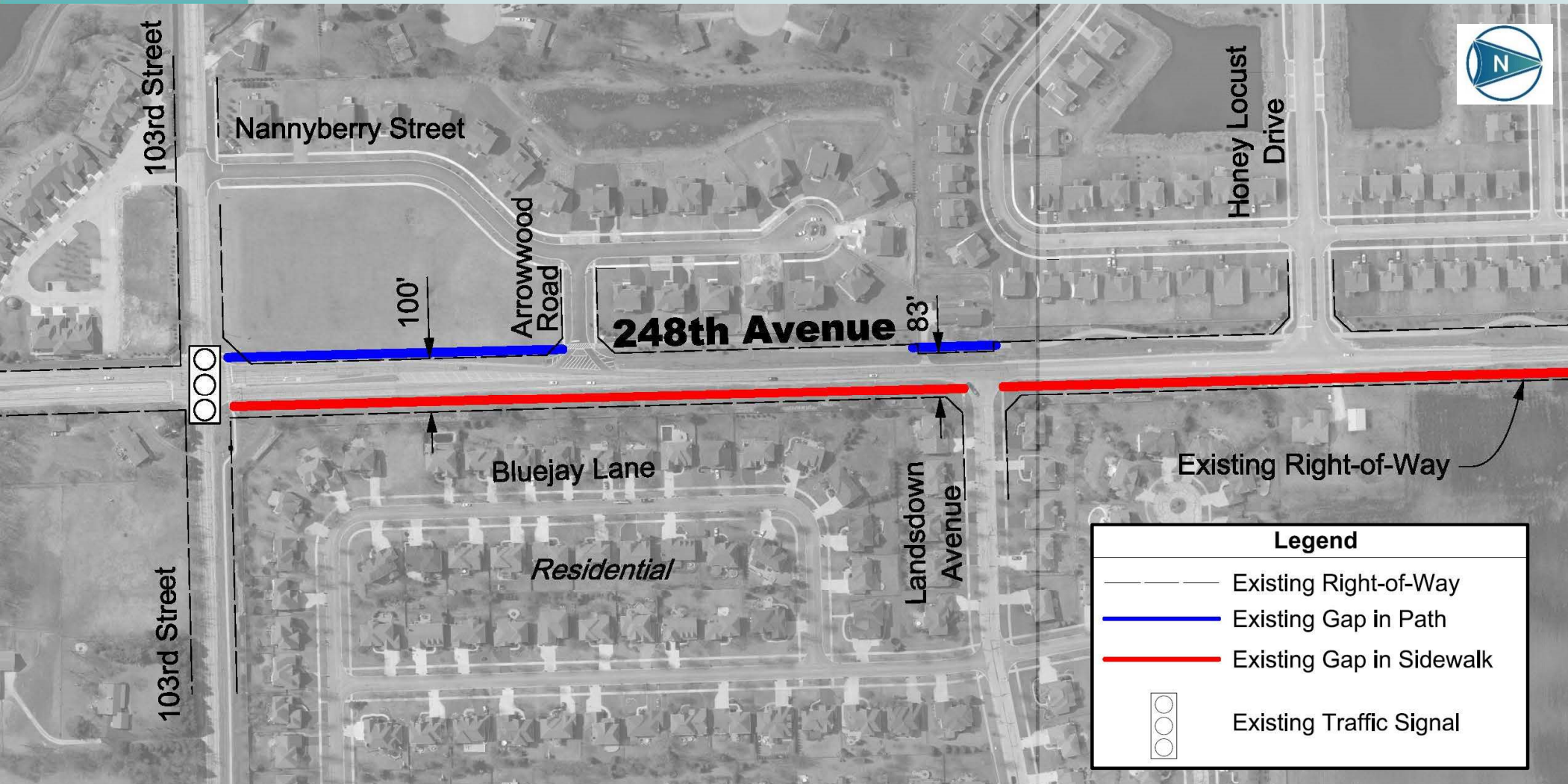
Phase I Study

## 9956 S 248th Avenue

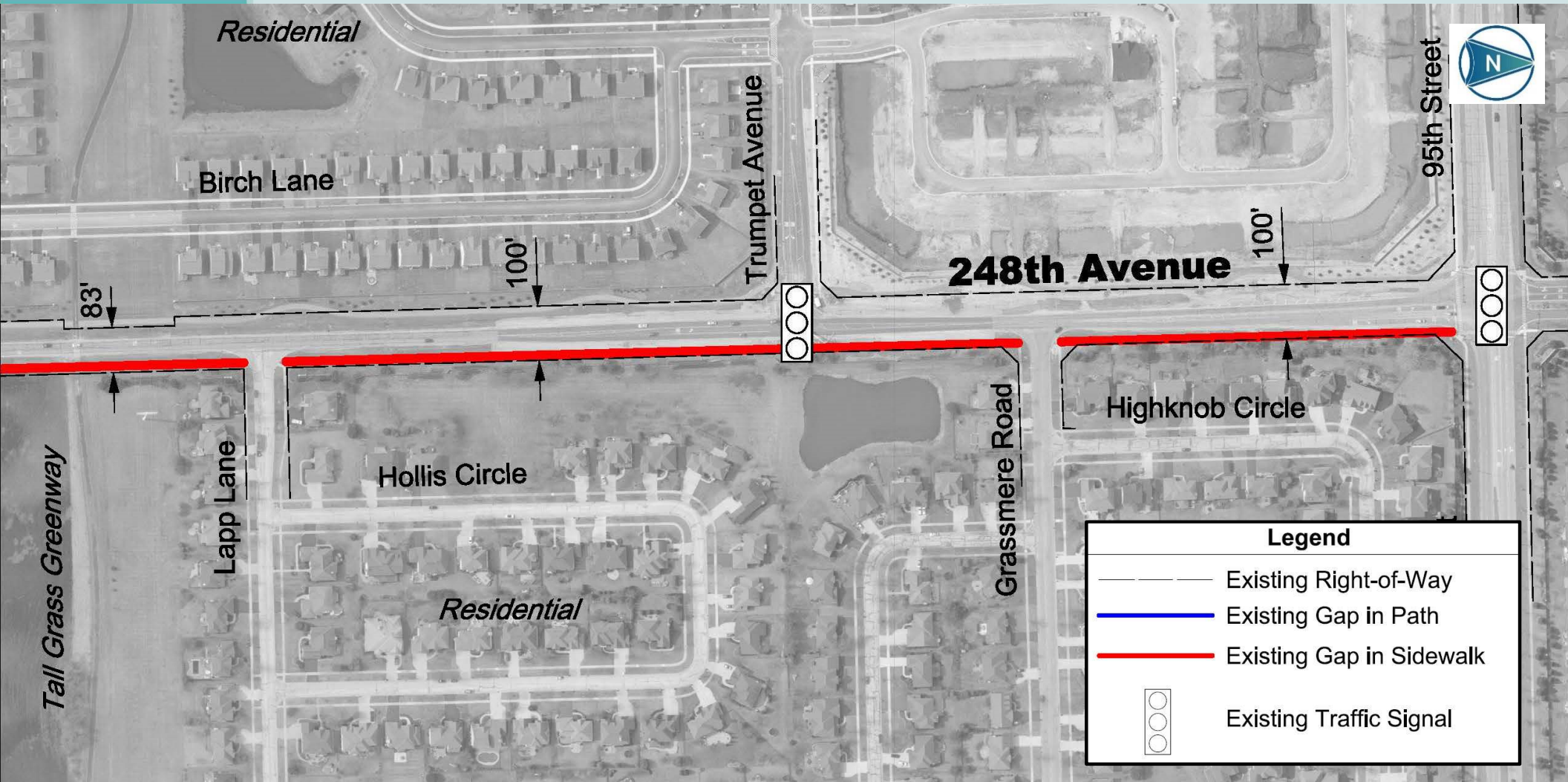




# Existing Conditions



# Existing Conditions



# Project Purpose and Need



Reduce Congestion and Improve Mobility, Access, and Safety



Encourage and Increase Use of Alternative Modes of Transportation



Increase Safety for Bicyclists and Pedestrians

# Public Involvement Meetings

- **PIM #1 – November 7, 2019 (95<sup>th</sup> Street Library)**
  - Introduce project to the public, show existing condition of the road
  - Let residents ask questions, provide feedback, share concerns
  - No proposed alternatives were provided
  - Well attended with 66 residents participating
- **PIM #2 – August 31, 2020 (Zoom)**
  - Show 3 alternatives based on feedback from PIM#1
  - Answer questions and listen to any feedbacks, concerns
  - 180 people registered, 119 unique viewers attending
- **PIM #2 – September 10, 2020 (Commissioner's Park)**
  - Same information provided
  - Residents were able to ask questions and provide feedback, concerns

# What We Heard – PIM #1 & Survey

Responses to the survey and discussion at the first public meeting included the following:

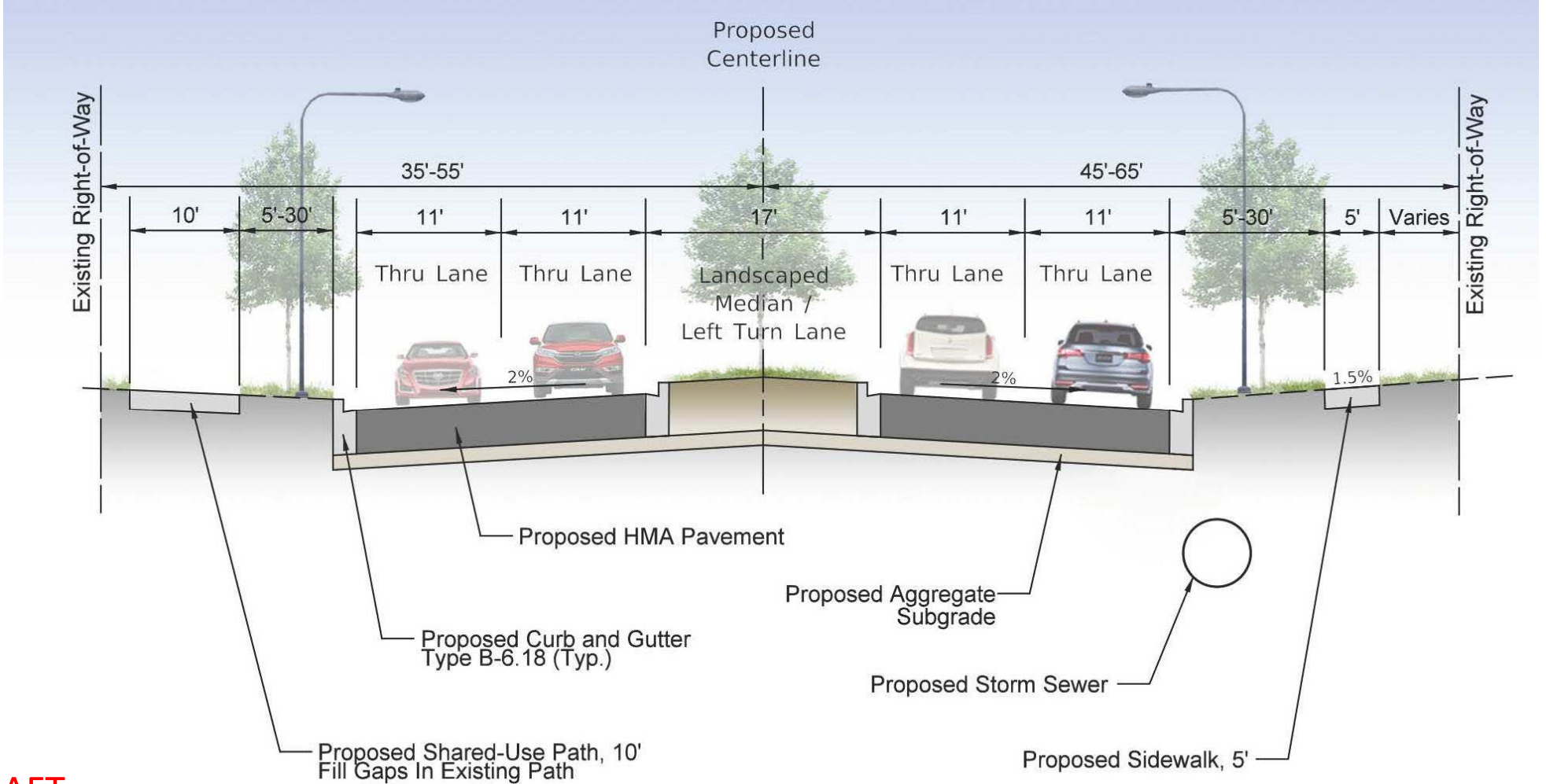
- Need for widening of the roadway to 4 lanes
- Existing traffic congestion
- High vehicle speeds within the corridor
- Connection of the gaps in the path on the west side of 248th Avenue
- Addition of sidewalk on the east side of 248th Avenue
- Pedestrian and bicyclist safety; especially at the Tall Grass Greenway Trail crossing
- Need for street lighting
- Improper usage of the Carillon Club entrance drive
- Investigate noise walls if roadway is widened

# Potential Improvements

- **Alternative 1**  
17-Foot Median With Symmetrical Widening
- **Alternative 2**  
17-Foot Median With Asymmetrical Widening
- **Alternative 3**  
12-Foot Median With Symmetrical Widening

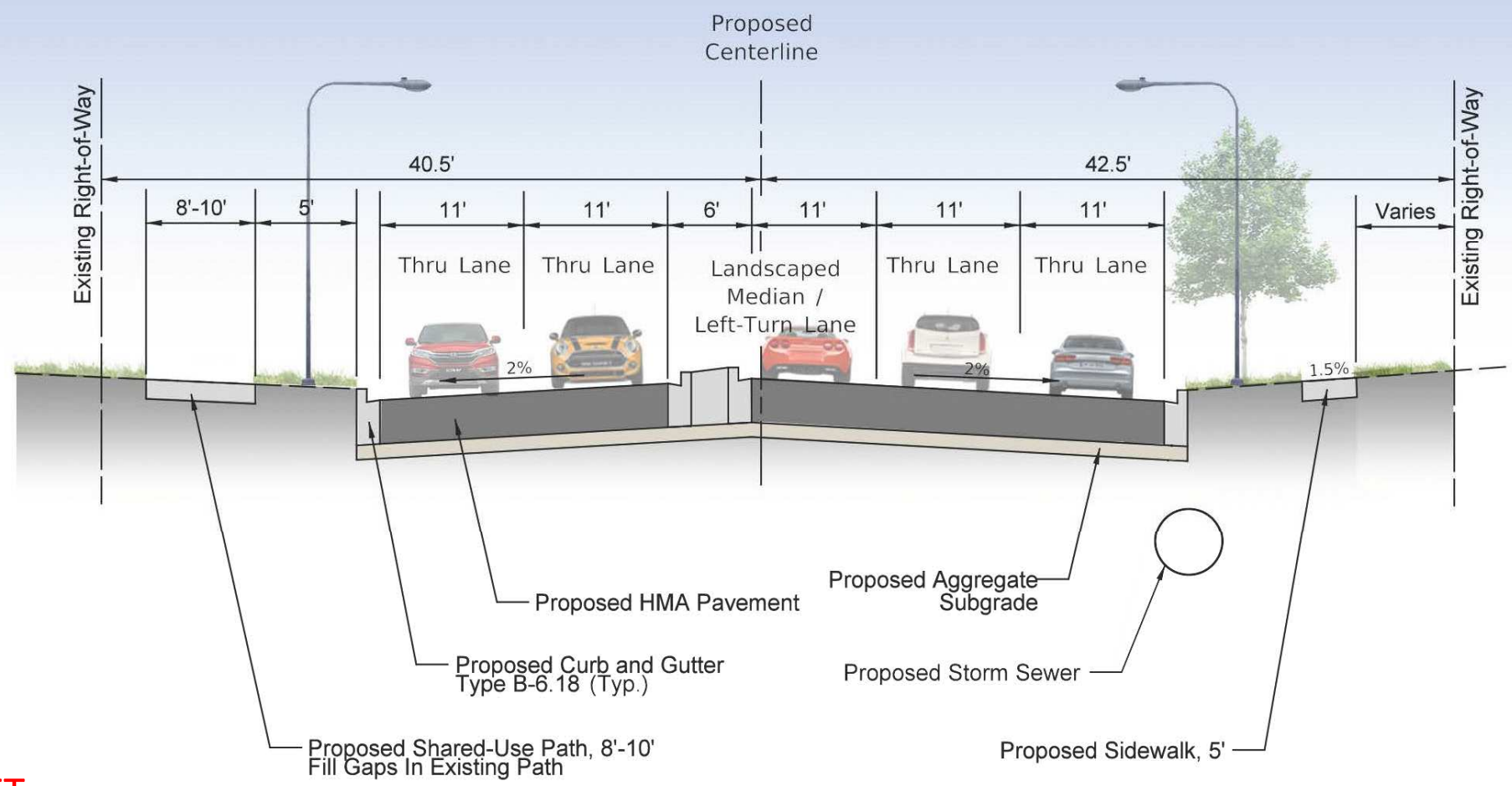
*Each alternative is a concept design. Upon selection of the Preferred Alternative, the final design will be further refined.*

# Alternative 1 – 17-Foot Median With Symmetrical Widening



**DRAFT**

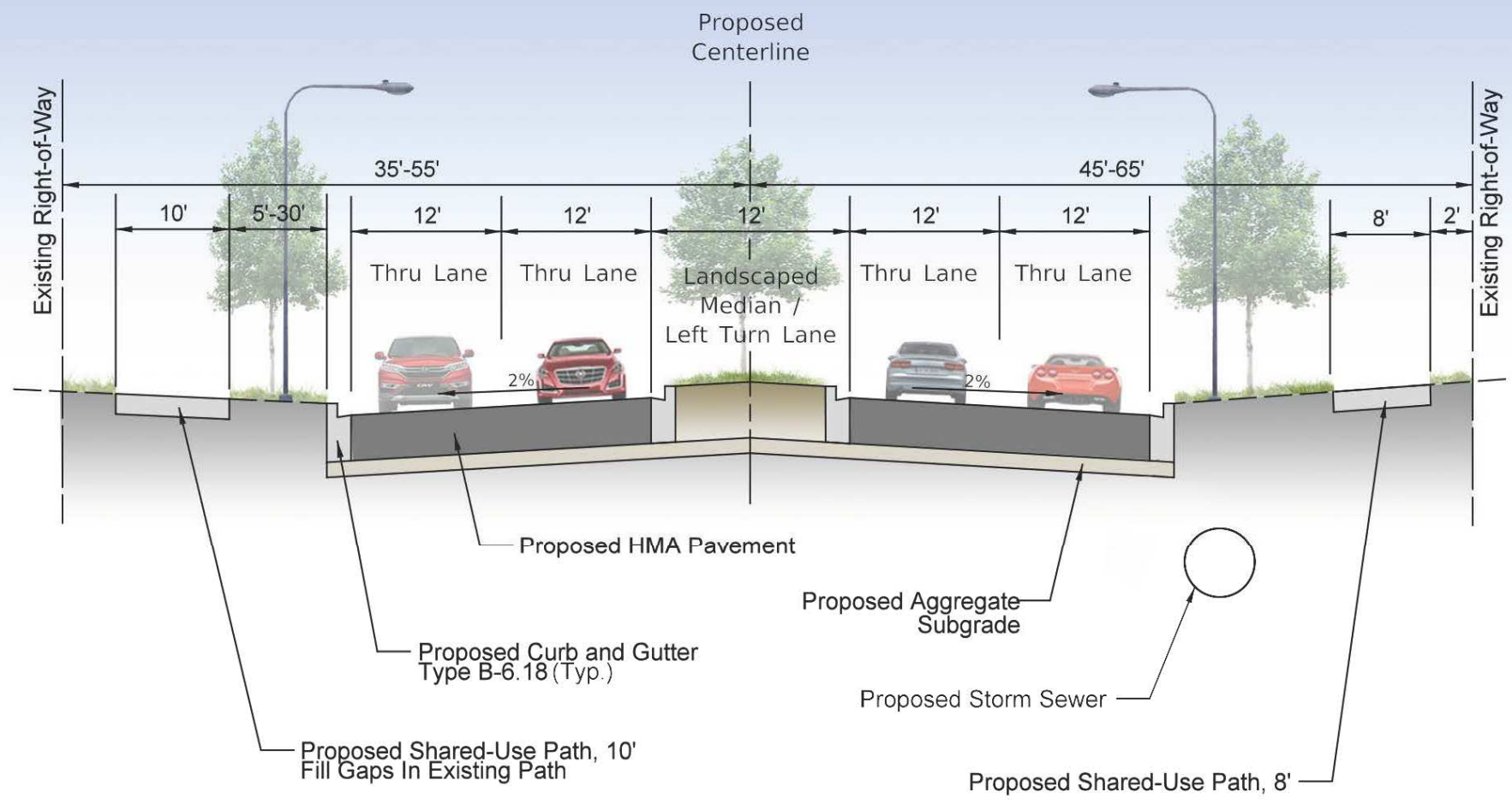
# Alternative 2 – 17-Foot Median With Horizontal Roadway Realignments



**DRAFT**



# Alternative 3 – 12-Foot Median With Symmetrical Widening



**DRAFT**

# Alternative Comparison

<b>Alternative Comparison</b>			
	<b>Alternative 1</b>	<b>Alternative 2</b>	<b>Alternative 3</b>
<b>Lane Width (ft)</b>	11'	11'	12'
<b>Median Width (ft)</b>	17'	17'	12'
<b>Right-of-Way Impacts (Acre)</b>	1.2	1.2	1.9
<b>Impacts to Existing Traffic Signal Equipment</b>	Yes	No	No
<b>Landscaping Impacts Within Right-of-Way</b>	Minimal	Minimal	Yes

## Components of Phase 1 Still Currently Under Review

- Noise Study (IDOT)
- Drainage Study

## Next Steps

- Selection of a Preferred Alternative
- Detailed design of Preferred Alternative
- Coordination with outside agencies
- Prepare Project Development Report and submit to IDOT
- Apply for Federal dollars
- Present Preferred Alternative at Public Information Meeting #3
- Obtain Design Approval – Concludes Phase I

# Project Schedule



\* Dependent on availability of funding and project readiness.