

NEW LED ILLUMINATED S/F MONUMENT SIGN DISPLAY (PROJECT #19-10000104)
 ALUMINUM CAP TO BE BERRIDGE PREWEATHERED GALVALUME. STONE BASE TO BE ELDORADOSTONE EUROPEAN LEDGE SIDEWALK. ALUMINUM LED ILLUM. TENANT CABINET, RETAINERS AND DIVIDER BARS PAINTED BLACK W/ WHITE POLYCARBONATE FACES AND WITH T.B.D. VINYL GRAPHICS. MAIN BODY PAINTED PMS #7539C. TOP CHANNEL LETTERS TO LED ILLUMINATED, WHITE FACES W/ BLACK TRIMCAP AND RETURNS. FCO PIN MOUNTED ADDRESS NUMBERS PAINTED WHITE.

3/8" = 1'-0"

Customer's Signature: _____ Date: _____

Comments:
(PROJECT #19-10000104)

**OLYMPIK
 SIGNS**

1130 N. Garfield
 Lombard, IL 60148

Ph.# 630.424.6100

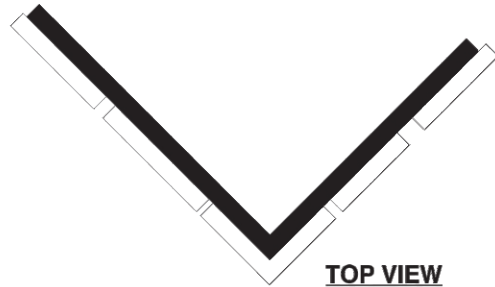
Fx.# 630.424.6120

WWW.OLYSIGNS.COM

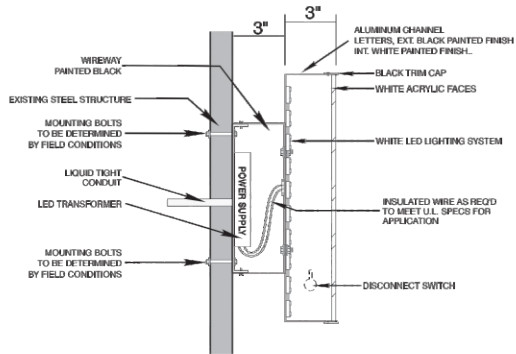
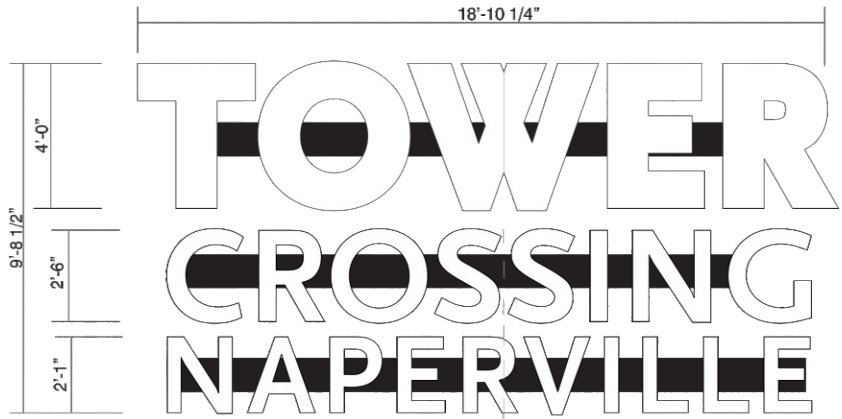
THIS IS AN ORIGINAL, UNPUBLISHED DRAWING SUBMITTED IN CONNECTION WITH A PROJECT WE ARE PLANNING FOR YOU. THIS IS NOT TO BE COPIED, REPRODUCED, EXHIBITED OR SHOWN TO ANYONE OUTSIDE OF YOUR ORGANIZATION WITHOUT THE WRITTEN PERMISSION OF OLYMPIC SIGNS, INC. ARTWORK IS EXCLUSIVE PROPERTY OF OLYMPIC SIGN INC.

job#: 19-7786
 6-11-19
 rev.# 10-29-19

page 2 of 2



TOP VIEW

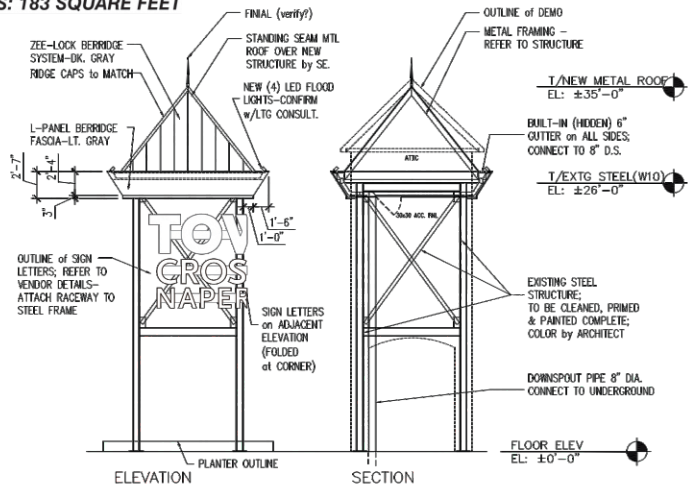


SECTION THRU DETAIL



ONE (1) SET OF CUSTOM 90 DEGREE ANGLED FACE LED LIT LETTERS ON WIREWAYS 3/16" = 1'-0"

TOTAL SQUARE FOOTAGE IS: 183 SQUARE FEET



Customer's Signature: _____ Date: _____

Comments:

PROJECT # 19-10000104



account representative / client **TOWER CROSSING** / drawn by
 RWJR / Dan S. / job#: 19-7589
 1130 N. Garfield / 1512 N. NAPER BLVD. NAPERVILLE, IL. / 2-12-19
 Ph.# 630.424.6100 / Fx.# 630.424.6120 / WWW.OLYSIGNS.COM / rev.# 9-9-19

THIS IS AN ORIGINAL, UNPUBLISHED DRAWING SUBMITTED IN CONNECTION WITH A PROJECT WE ARE PLANNING FOR YOU. THIS IS NOT TO BE COPIED, REPRODUCED, EXHIBITED OR SHOWN TO ANYONE OUTSIDE OF YOUR ORGANIZATION WITHOUT THE WRITTEN PERMISSION OF OLYMPIC SIGNS, INC. ARTWORK IS EXCLUSIVE PROPERTY OF OLYMPIC SIGN INC.

PROJECT # 19-1000104

NEW IDENTITY SIGN ON STEEL TOWER (NORTH HALF)

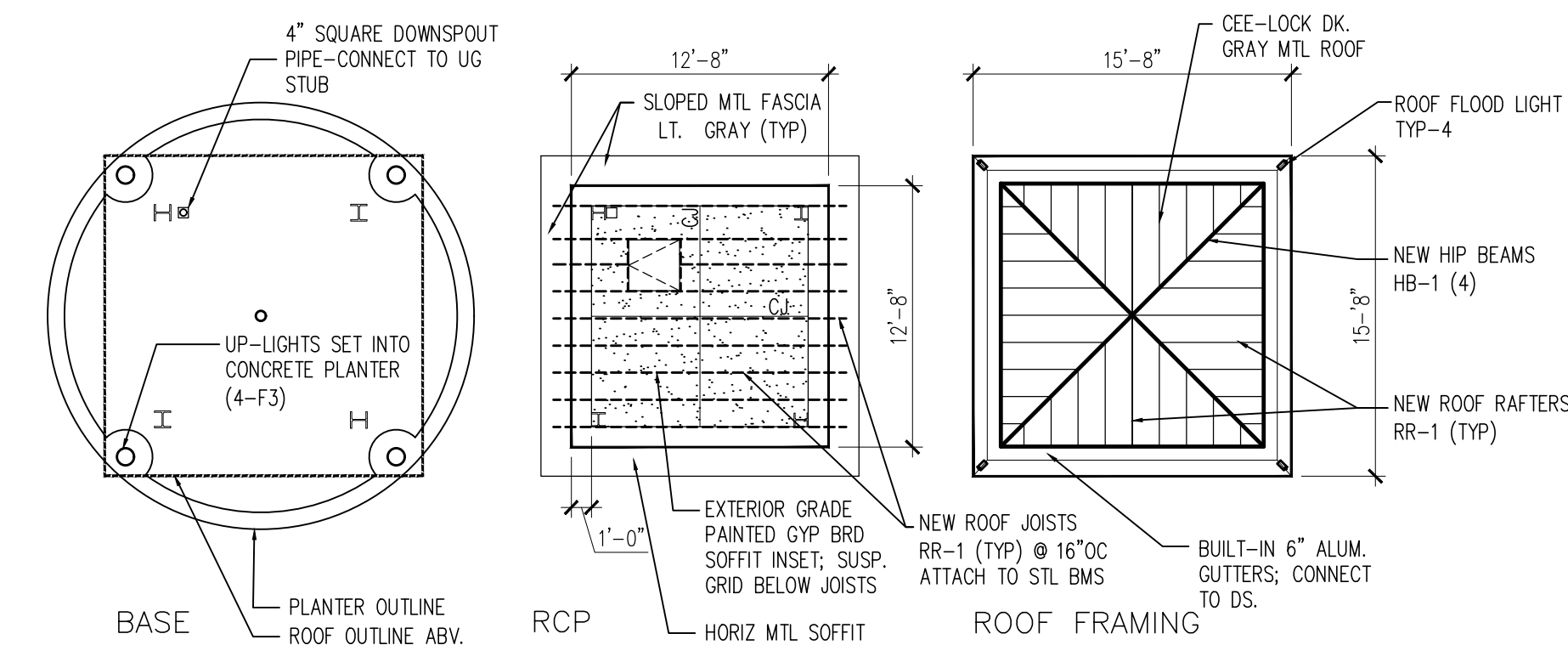
1 NORTH (FRONT) ELEVATION
SCALE: 1/8"=1'-0"

REFER TO COLOR SIGN RENDERINGS FOR DETAILS

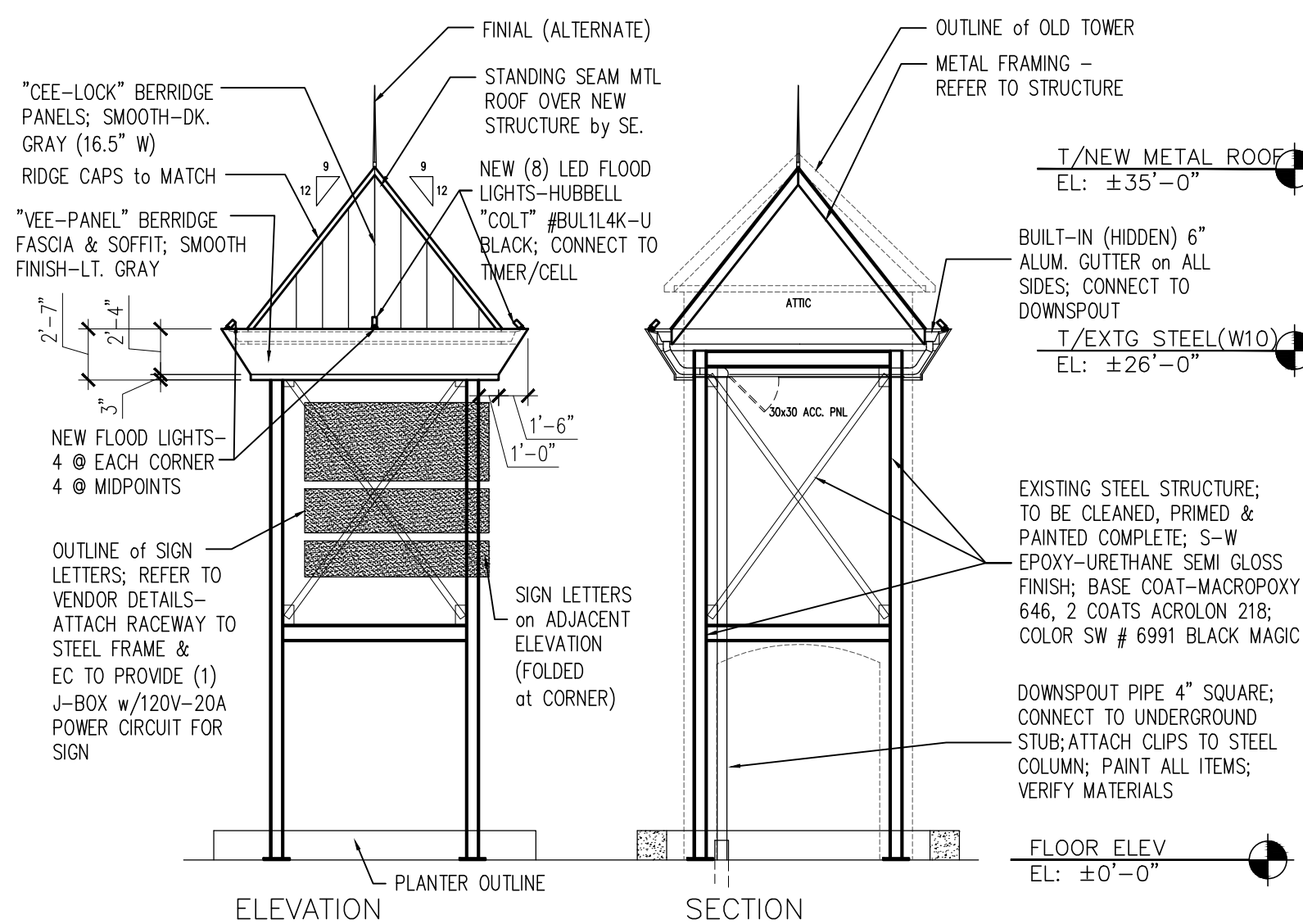
NEW IDENTITY SIGN ON STEEL TOWER (WEST HALF)

2 WEST (FRONT) ELEVATION
SCALE: 1/8"=1'-0"

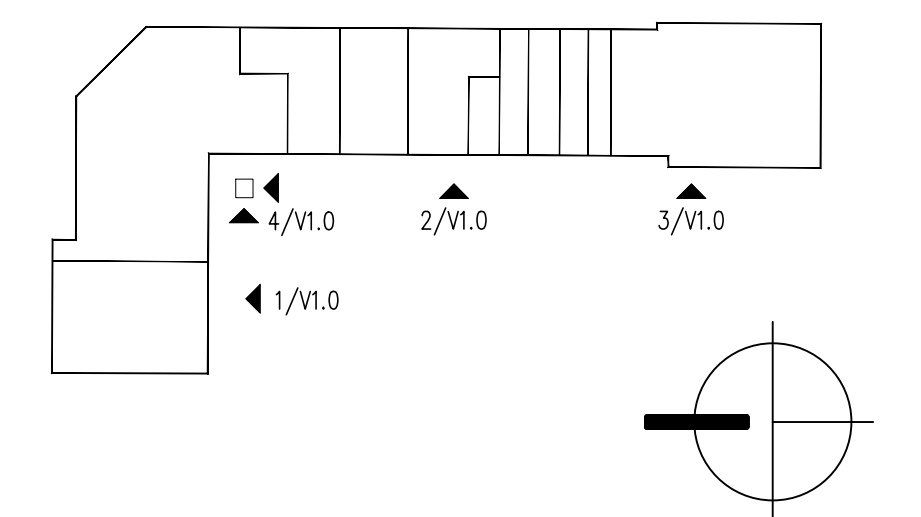
3 WEST (FRONT) ELEVATION
SCALE: 1/8"=1'-0"



4 STEEL TOWER/IDENTITY SIGN
SCALE: 1/8"=1'-0"



NOTE:
EXTERIOR REMODELING IN PROGRESS
BUILDING PERMIT # 18 - 1879



0 ELEV-KEY PLAN

North American
Real Estate Management



EXTERIOR REMODELING
TOWER CROSSING SHOPPING CENTER
1512 NORTH NAPER BLVD.
NAPERVILLE, ILLINOIS

CONSTR ISSUE:	
PERMIT ISSUE:	
BID ISSUE:	
DRAWING ISSUE HISTORY	
PROJECT NO:	09-009-07
DRAWING DATE:	SEPT 2019
DRAWN BY:	rk
CHECKED BY:	RK
DRAWING SCALE:	AS NOTED

EXTERIOR ELEVATIONS
for
VARIANCE PACKAGE

V1.0

COPYRIGHT 2019