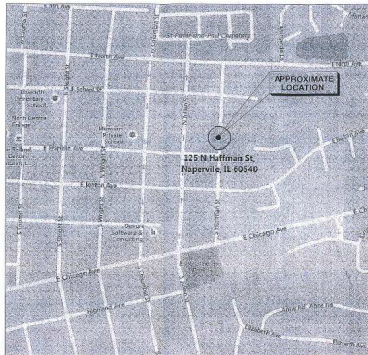


Boundary and Topographic Survey

LEGAL DESCRIPTION:
 LOT 6 IN BLOCK IN BELCARA HEIGHTS, IN SECT ON 18, TOWNSHIP 38 NORTH, RANGE 10, EAST OF THE
 THIRD PRINCIPAL MERIDIAN, IN DUPAGE COUNTY, ILLINOIS.
 COMMONLY KNOWN AS 125 N. HUFFMAN STREET, NAPERVILLE, ILLINOIS.



Vicinity Map
(No Scale)

LINE TYPE LEGEND

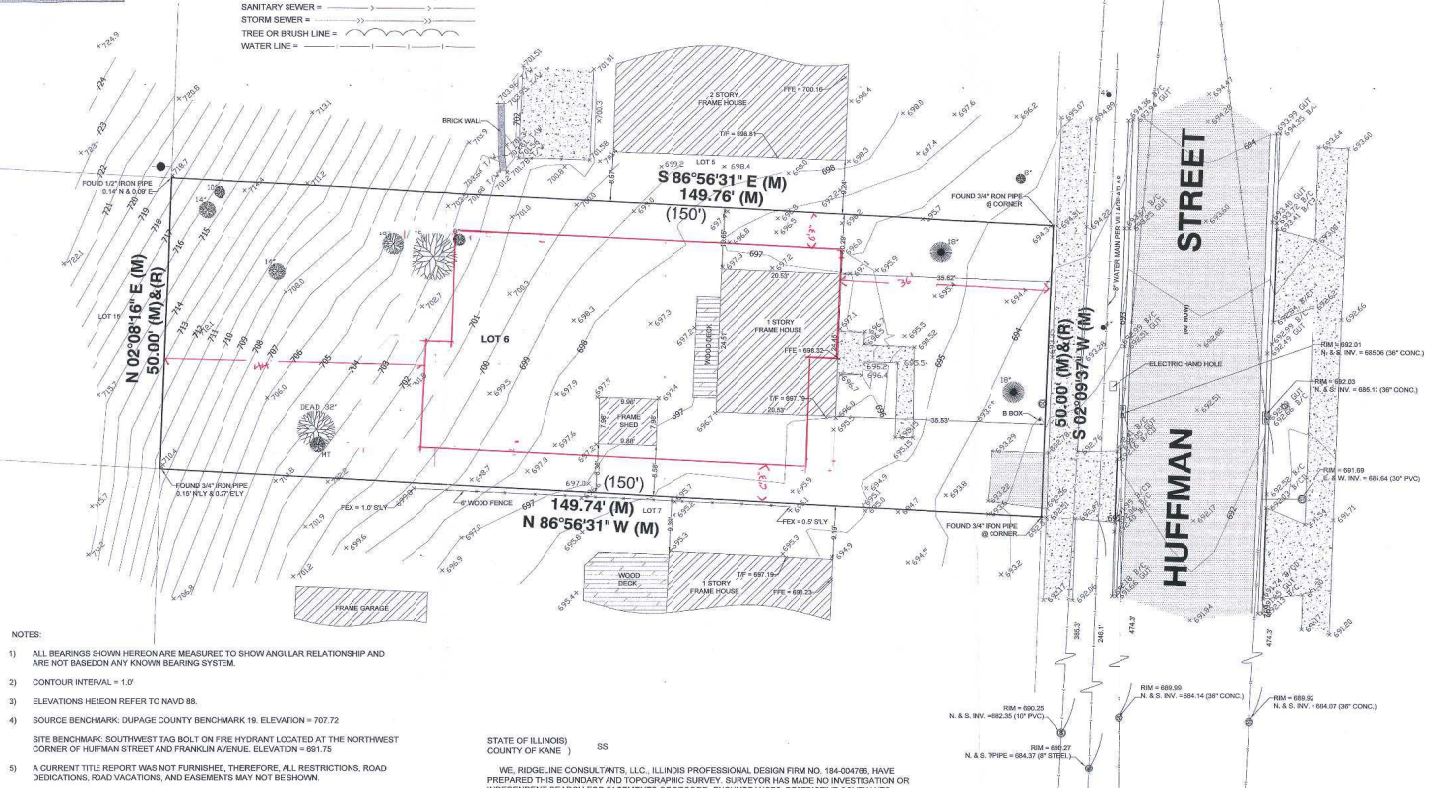
BUILDING SETBACK =	---
COMBINED SEWER =	---CHD---CHD---
DEPRESSED CURB =	---
EASEMENT =	---
ELECTRIC LINE =	---
FENCE =	---
FIBER OPTIC CABLE =	---
GAS LINE =	---
GUARD RAIL =	---
CENTERLINE OF OVERHEAD WIRES =	---OHV---
SANITARY SEWER =	---
STORM SEWER =	---
TREE OR BRUSH LINE =	---
WATER LINE =	---

SYMBOL LEGEND

	= ASPHALT
	= A/C
	= BASKETBALL HOOP
	= BRICK
	= CABLE TV PEDESTAL
	= CATCH BASIN
	= CLEANOUT
	= COMBINED STORM & SANITARY MANHOLE
	= CONCRETE
	= DECIDUOUS TREE
	= DOWNSPOUT
	= ELECTRIC MANHOLE
	= ELECTRIC PEDESTAL
	= ELECTRIC TRANSFORMER
	= FIBER OPTIC PEDESTAL
	= FLAG POLE
	= FOUND CUT CROSS
	= FOUND MONUMENT
	= GAS MANHOLE
	= GRAVEL
	= HYDRANT
	= LIGHT
	= MAIL BOX
	= PINE TREE
	= PAY PHONE
	= SANITARY MANHOLE
	= SET IRON PIPE 12" DIA x 24"
	= SIGN
	= STORM MANHOLE
	= SQUARE CURB DRAIN
	= SWITCH CABINET
	= TELEPHONE MANHOLE
	= TELEPHONE NETWORK INTERFACE
	= TELEPHONE PEDESTAL
	= TRAFFIC LIGHT
	= TRAFFIC MANHOLE
	= UNKNOWN MANHOLE
	= WATER MANHOLE
	= WATER SPIGOT
	= WATER VALVE
	= WOOD
	= WOOD POWER POLE

ABBREVIATION LEGEND

A	= ASPHALT
ADA	= AMERICANS WITH DISABILITY ACT
B/B	= BOTTOM OF ANCHOR BOLT
B/BSS	= BOTTOM OF BUSS
BC	= BACK OF CURB
BCD	= BACK OF DEPRESSED CURB
BSL	= BUILDING SETBACK LINE
B/W	= BOTTOM OF WALL ELEVATION
ILC	= BUILDING CORNER
C	= CONCRETE
C.E.	= CITY EASEMENT
CHD	= CHORD
CL	= CENTERLINE
CMF	= CORRUGATED METAL PIPE
CPP	= CORRUGATED PLASTIC PIPE
ZW	= CONCRETE WALK
(D)	= DEED
DIP	= DUCTILE IRON PIPE
E	= EAST
EB	= EDGE OF BRICK
SIC	= EDGE OF CONCRETE
EG	= EDGE OF GRAVEL
ELY	= EASTERLY
EP	= EDGE OF PAVEMENT
EW	= EDGE OF WATER
ES	= FLARED END SECTION
TEX	= FENCE CORNER
FE	= FINISHED FLOOR ELEVATION
F.I.P.	= FOUND IRON PIPE
F.I.R.	= FOUND IRON ROD
FPK	= FOUND P.K. NAIL
G	= GROUND
GUT	= GUTTER
CV	= IRRIGATION CONTROL VALVE
M	= MEASURED DISTANCE
AW	= MONITORING WELL
MT	= MULTI TRUNK
N	= NORTH
NLY	= NORTHERLY
P.O.B.	= POINT OF BEGINNING
P.O.C.	= POINT OF COMMENCEMENT
PVC	= POLYVINYL CHLORIDE (PLASTIC PIPE)
P.U.E.	= PUBLIC UTILITY EASEMENT
P.U. & D.E.	= PUBLIC UTILITY & DRAINAGE EASEMENT
(R)	= RECORD DISTANCE
RAD	= RADIUS
RCP	= ROUND CONCRETE PIPE
R.C.W.	= RIGHT OF WAY
S	= SOUTH
Sly	= SOUTHERLY
T/B	= TOP OF ANCHOR BOLT
T/BSS	= TOP OF BUSS
TC	= TOP OF CONCRETE
TF	= TOP OF FOUNDATION ELEVATION
TR/PE	= TOP OF PIPE
T/W	= TOP OF WALL ELEVATION
T/W/W	= TOP OF WINDOW WELL ELEVATION
U.D.E.	= UTILITY & DRAINAGE EASEMENT
W	= WEST
Wly	= WESTERLY



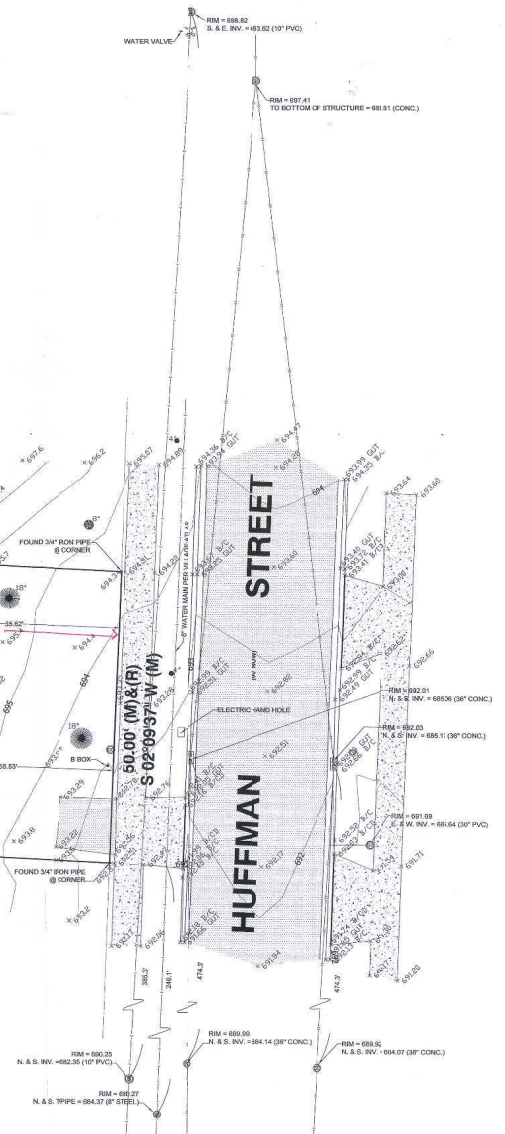
- NOTES:
- 1) ALL BEARINGS SHOWN HEREON ARE MEASURED TO SHOW ANGULAR RELATIONSHIP AND ARE NOT BASED ON ANY KNOWN BEARING SYSTEM.
 - 2) CONTOUR INTERVAL = 1.0'
 - 3) ELEVATIONS HEREON REFER TO NAVD 83.
 - 4) SOURCE BENCHMARK: DUPAGE COUNTY BENCHMARK 19. ELEVATION = 707.72
 - 5) SITE BENCHMARK: SOUTHWEST TAG BOLT ON FIRE HYDRANT LOCATED AT THE NORTHWEST CORNER OF HUFFMAN STREET AND FRANKLIN AVENUE. ELEVATION = 691.75
 - 6) A CURRENT TITLE REPORT WAS NOT FURNISHED. THEREFORE, ALL RESTRICTIONS, ROAD DEDICATIONS, ROAD VARIATIONS, AND EASEMENTS MAY NOT BE SHOWN.
 - 7) ALL UTILITIES MAY NOT BE SHOWN. CALL JULIE AT 480-882-1123 FOR FIELD LOCATION OF UNDERGROUND UTILITY LINES PRIOR TO ANY DIGGING OR CONSTRUCTION.
 - 8) THIS PROPERTY MAY BE WITHIN THE CORPORATE LIMITS OF THE CITY OF NAPERVILLE, AND AS SUCH SUBJECT TO ZONING AND BUILDING RESTRICTIONS.
 - 9) FIELD WORK COMPLETED ON 6-23-2016.
 - 10) ALL TREES LESS THAN 6 INCHES IN DIAMETER ARE NOT SHOWN HEREON.
 - 11) PARCEL CONTAINS APPROXIMATELY 7487 SQUARE FEET.

STATE OF ILLINOIS)
 COUNTY OF KANE) SS

WE, RIDGELINE CONSULTANTS, LLC, ILLINOIS PROFESSIONAL DESIGN FIRM NO. 184-004786, HAVE PREPARED THIS BOUNDARY AND TOPOGRAPHIC SURVEY. SURVEYOR HAS MADE NO INVESTIGATION OR INDEPENDENT SEARCH FOR EASEMENTS OF RECORD, ENCUMBRANCES, RESTRICTIVE COVENANTS, OWNERSHIP OR TITLE EVIDENCE OR ANY OTHER FACTS WHICH AN ACCURATE TITLE SEARCH MAY DISCLOSE. THIS PROFESSIONAL SERVICE CONFORMS TO THE CURRENT ILLINOIS MINIMUM STANDARDS FOR BOUNDARY AND TOPOGRAPHIC SURVEYS.

DATED AT MONTGOMERY, ILLINOIS ON JUNE 2, 2016.

Edward A. Hodge



George H. Skulavik P.L.B. 035-005583 EXPIRATION DATE 11/30/2016	Nov. 18th	No. Description
Stacy L. Stevay P.L.B. 035-003411 EXPIRATION DATE 11/30/2016	Nov. 18th	Nov. 18th
Edward A. Hodge P.L.B. 035-002326 EXPIRATION DATE 11/30/2016	Nov. 18th	Nov. 18th
PROFESSIONAL DESIGN FIRM NO. 184-004786		
184004786		
PHYSICIAN: EDWARD A. HODGE		
PHONE: 630-801-9927 FAX: 630-801-1155		
Survey is valid only if digitalized as shown in red.		

