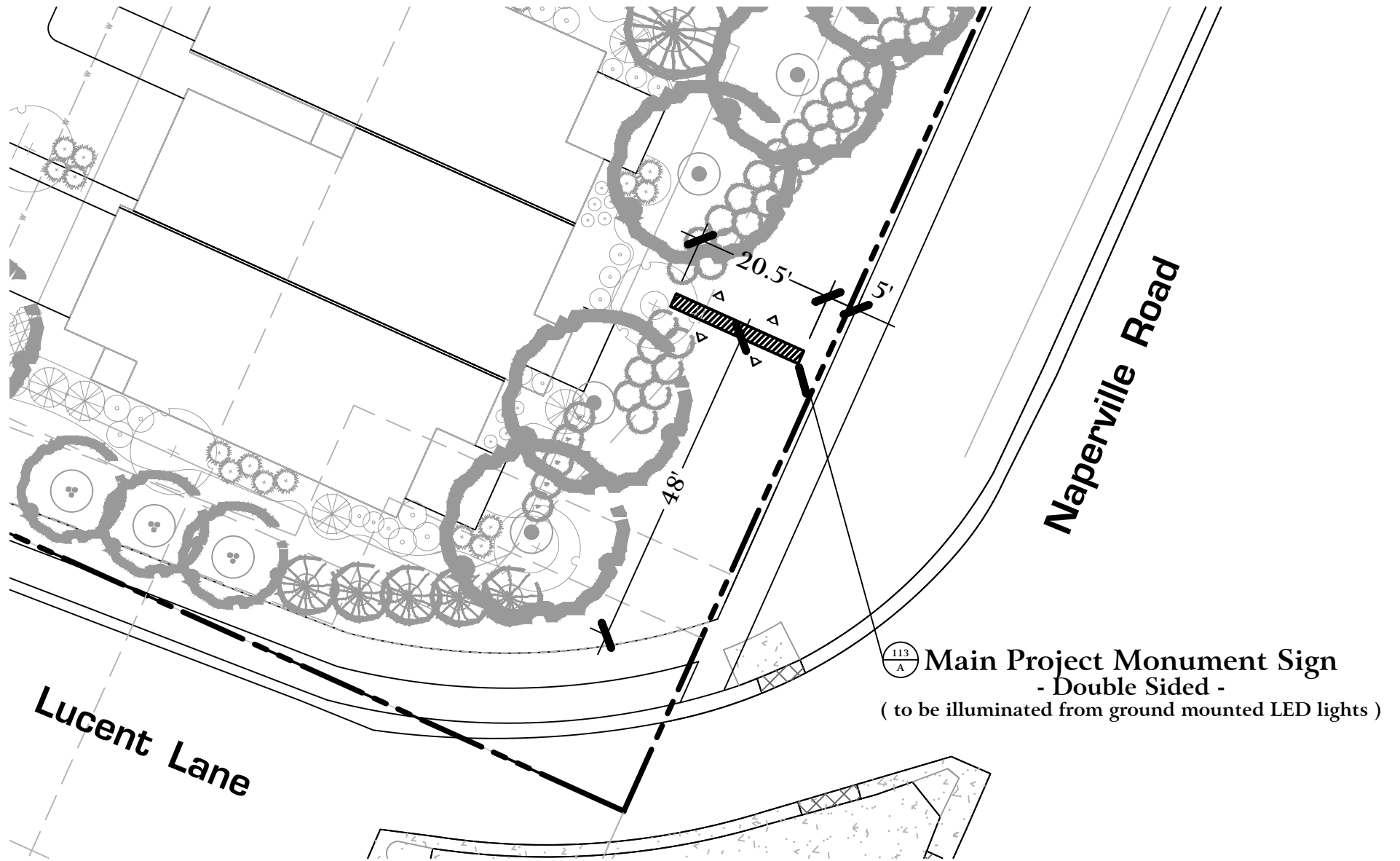


A

Main Monument Sign - Elevation

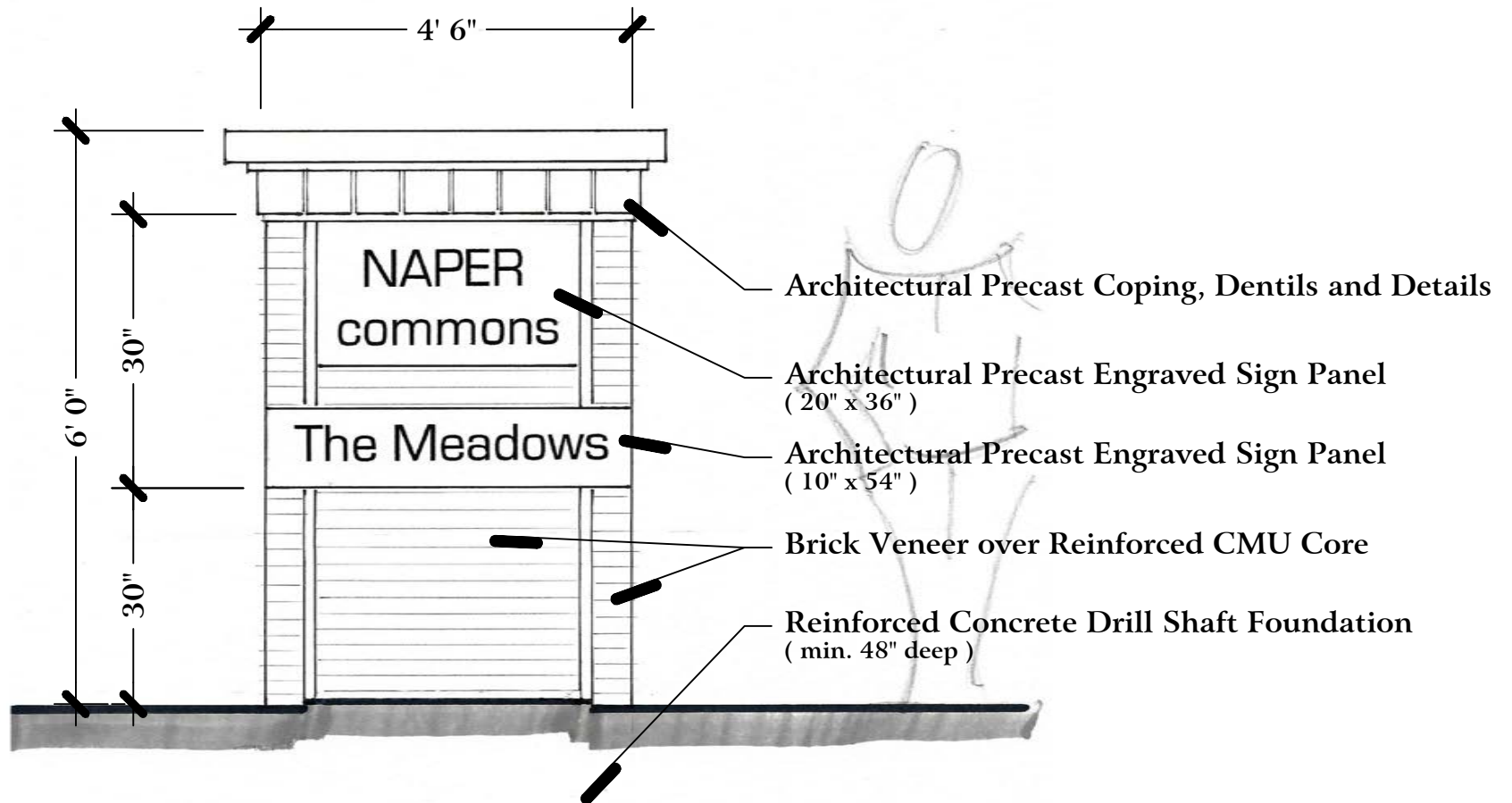
N.T.S.



A

Main Monument Sign - Location Plan

N.T.S.

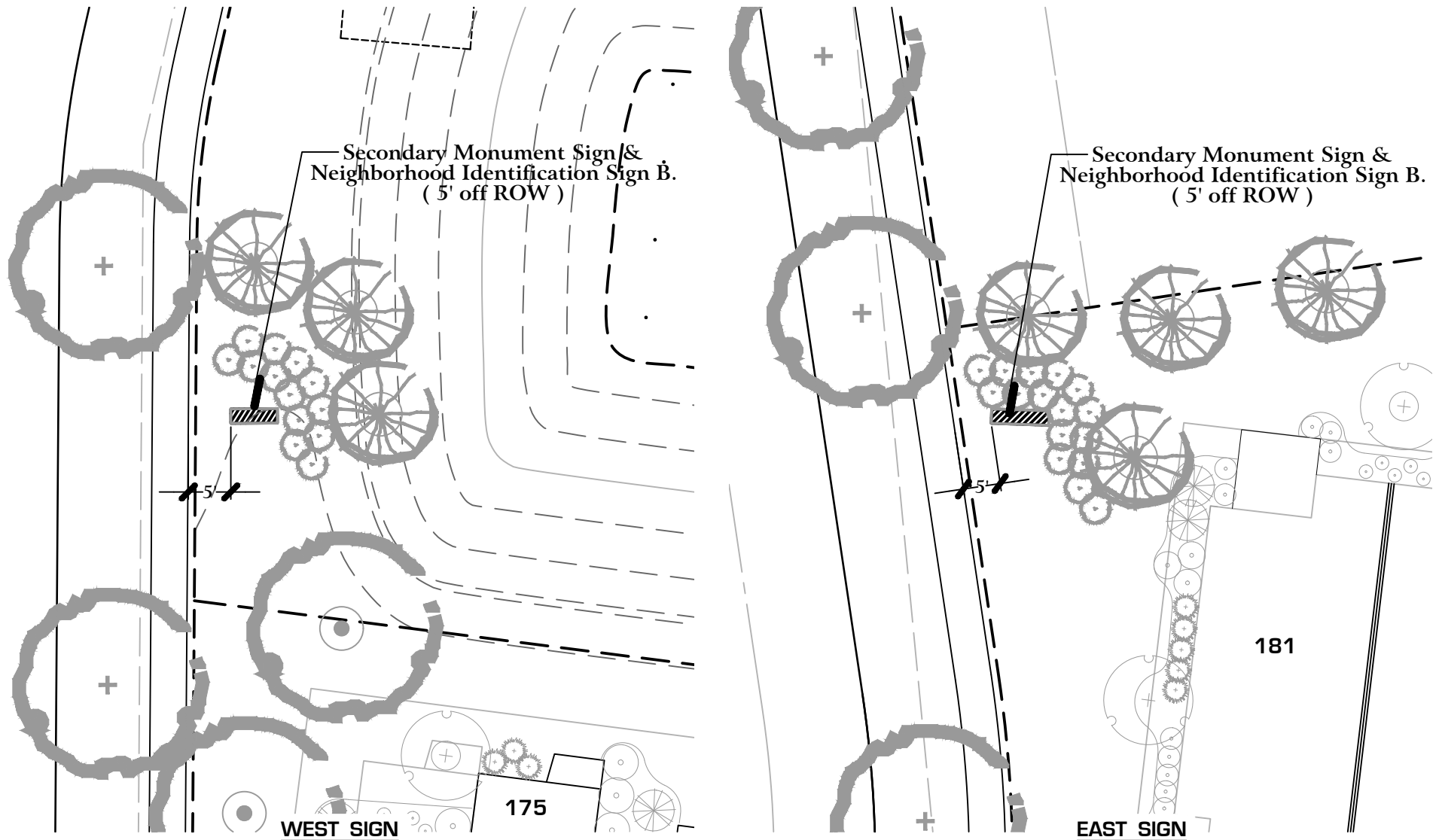


Sign is Single-Sided and there are two (2) Signs - Total

B

Secondary Monument & Neighborhood Identification Sign - Elevation

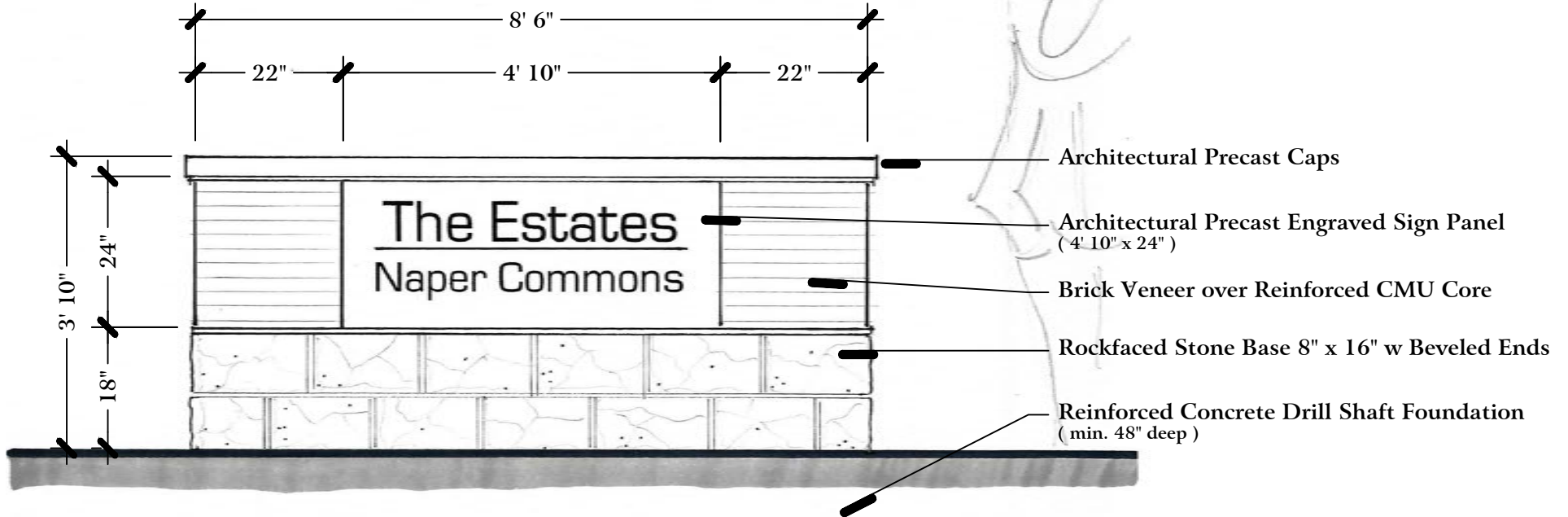
N.T.S.



B

Secondary Monument & Neighborhood Identification Sign - Location Plans

N.T.S.



C

Neighborhood Identification Sign - Elevation

N.T.S.

Neighborhood Sign C.
(10' off ROW)

113
C

ROAD B

ROAD C

Neighborhood Identification Sign - Location Plan

C

N.T.S.

