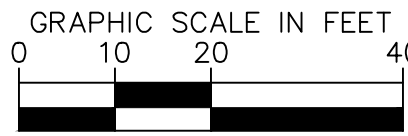


Drawing name: K:\GIS\DEV\168865042_Casey's_6531_Naperville_IL_V Design\CAD\PlanSheets\C-101 SITE PLAN.dwg C-101 Jul 03, 2025 12:08pm by: Jake Antony
This document, together with the concepts and designs presented herein, is intended only for the specific purpose and client for which it was prepared. Reuse of and improper reliance on this document without written authorization and adaptation by Kimley-Horn and Associates, Inc. shall be without liability to Kimley-Horn and Associates, Inc.

WASHINGTON STREET
ONLY

US/34 (OGDEN AVENUE)



Call
Before
You Dig
70LIE
1-800-892-0123

GENERAL NOTES

- ALL DIMENSIONS REFER TO THE FACE OF CURB UNLESS OTHERWISE NOTED.
- BUILDING DIMENSIONS ARE TO THE OUTSIDE FACE OF BUILDING UNLESS OTHERWISE NOTED.
- REFER TO ARCHITECTURAL AND STRUCTURAL PLANS TO VERIFY ALL BUILDING DIMENSIONS.
- RADIJ ADJACENT TO PARKING STALL AND NOT DIMENSIONED ON THIS PLAN SHALL BE 3- FEET, TYPICAL.
- REFER TO ARCHITECTURAL PLANS FOR MONUMENT SIGN DETAILS. SEE MEP PLANS FOR SITE ELECTRICAL DRAWINGS.
- ALL PROPOSED ON-SITE STRIPING SHALL BE PAINTED UNLESS OTHERWISE NOTED.

KEY NOTES

- B6.12 CONCRETE CURB AND GUTTER, TYP. (SEE SHEET C-606)
- CONNECT TO EXISTING PAVEMENT, SIDEWALK, CURB, TYP.
- CONCRETE SIDEWALK, TYP. (SEE SHEET C-601 & C-607)
- ACCESSIBLE YELLOW PAVEMENT MARKINGS, TYP. (SEE SHEET C-607 - ADA STALL TO BE PAINTED YELLOW PER NAPERVILLE STANDARD 590.35)
- ACCESSIBLE PARKING SIGN, TYP. (MUTCD R7-8, SEE SHEET C-607)
- 4" WIDE PAINTED SOLID WHITE LINE, TYP.
- TRASH ENCLOSURE (SEE ARCHITECTURAL PLANS FOR DETAILS)
- BOLLARD, TYP. (SEE SHEET C-601 DETAIL 1)
- MONUMENT SIGN (SEE PLANS BY OTHERS)
- EMERGENCY SHUT-OFF SWITCH (SEE SHEET C-601 DETAIL 8)
- AIR COMPRESSOR BOX (SEE SHEET C-601 DETAIL 7)
- LIGHT POLES SHOWN FOR COORDINATION ONLY (SEE SITE LIGHTING PLANS)
- 10' X 10' TRANSFORMER PAD (FOR REFERENCE ONLY)
- BIKE RACK (TO BE PROCURED AND INSTALLED BY CONTRACTOR; WAVE STYLE, 3-LOOP, 5-BIKE CAPACITY, HEAVY DUTY, BLACK IN COLOR, SURFACE MOUNTED)
- DEPRESSED CURB AND GUTTER
- FIREWOOD RACK (SEE ARCHITECTURAL PLANS FOR DETAILS)
- PROPANE TANK CABINET (SEE ARCHITECTURAL PLANS FOR DETAILS)
- PACKAGED ICE CABINET (SEE ARCHITECTURAL PLANS FOR DETAILS)

PARKING SUMMARY

PARKING SPACES REQUIRED (CITY STANDARD)	= 15 SPACES
*4.5 SPACES / 1000 SF OF GROSS FLOOR AREA	
STANDARD PARKING SPACES PROVIDED	= 9 SPACES
FUEL CANOPY PARKING SPACES PROVIDED	= 12 SPACES
ACCESSIBLE PARKING SPACES REQUIRED	= 1 SPACES
ACCESSIBLE PARKING SPACES PROVIDED	= 1 SPACES
TOTAL PARKING SPACES PROVIDED	= 22 SPACES

CITY OF NAPERVILLE NOTES

- 2011 DEED RESTRICTION: ALL UNDERGROUND UTILITIES SHALL BE VAPOR TIGHT.
- 2011 DEED RESTRICTION: ALL UTILITY CONNECTIONS SHALL BE MADE TO PROHIBIT VAPOR AND LIQUID INTRUSION INTO STRUCTURES.
- 2011 DEED RESTRICTION: NEW BUILDINGS CONSTRUCTED ON SITE SHALL BE REQUIRED TO INSTALL AN IMPERVIOUS LINER UNDER THE NEW FOUNDATION
- 2015 ENVIRONMENTAL NOTICE: ENGINEERED BARRIER CONSTRUCTED IN THE SOUTHWEST CORNER OF SITE
- 2015 ENVIRONMENTAL NOTICE: ANY CONTAMINATED SOIL OR GROUNDWATER REMOVED OR EXCAVATED FROM, OR DISTURBED AT, THE ABOVE REFERENCED SITE MUST BE HANDLED IN ACCORDANCE WITH ALL APPLICABLE LAWS AND REGULATIONS UNDER 35 ILL. ADM CODE SUBTITLE G (HAZARDOUS WASTE)

UNDERGROUND STORAGE TANK BALLAST REQUIREMENTS
AFTER SUCCESSFUL INSTALL OF UNDERGROUND STORAGE TANKS, DISPOSAL OF TANK BALLAST WATER SHOULD BE DISCHARGED TO THE CITY OF NAPERVILLE STORM SEWER SYSTEM.

SITE DATA TABLE

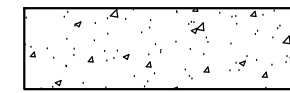
EXISTING IMPERVIOUS AREA:	= 23,285 SQ FT / 0.53 AC
EXISTING PERVIOUS AREA:	= 8,143 SQ FT / 0.19 AC
PROPOSED IMPERVIOUS AREA:	= 24,378 SQ FT / 0.56 AC
PROPOSED PERVIOUS AREA:	= 7,050 SQ FT / 0.16 AC
NET DIFFERENCE IMPERVIOUS:	= 1,093 SQ FT / 0.03 AC
BUILDING AREA	= 3,218 SF
PROPERTY AREA	= 31,428 SF
FAR	= 0.102
MAXIMUM FAR ALLOWED	= 0.325

PER CITY OF NAPERVILLE, POST CONSTRUCTION BEST MANAGEMENT PRACTICES (PCBMPs) ARE NOT REQUIRED FOR THIS STORMWATER MANAGEMENT.

FEMA NOTE

PER FLOOD INSURANCE RATE MAP PANEL NO. 17043C0231J, THE SITE OR A PORTION OF THE SITE IS LOCATED IN ZONE X.

PAVING AND CURB LEGEND



CONCRETE SIDEWALK
SEE SHEET C-601 DETAIL 1 FOR CASEY'S PAVEMENT SECTION
SEE SHEET C-608 FOR CITY OF NAPERVILLE PAVEMENT SECTION



6" CONCRETE PAVEMENT (STANDARD)
SEE SHEET C-601 DETAIL 2 FOR PAVEMENT SECTION



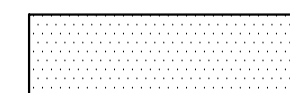
8" CONCRETE PAVEMENT (HEAVY-DUTY)
SEE SHEET C-601 DETAIL 2 FOR PAVEMENT SECTION



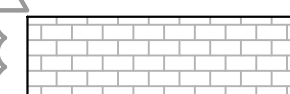
8" REINFORCED CONCRETE PAVEMENT FOR UNDERGROUND TANKS
SEE SHEET C-601 DETAIL 2 FOR PAVEMENT SECTION



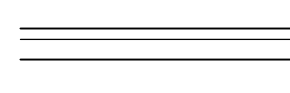
3' WIDE CONCRETE BAND (BOLLARD ISOLATION)
SEE SHEET C-601 DETAIL 1 FOR PAVEMENT SECTION



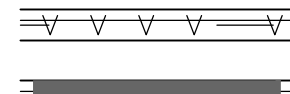
2' PAVEMENT PATCH
MATCH EXISTING ROADWAY SECTION, SEE IDOT PAVEMENT PATCH DETAIL



CITY OF NAPERVILLE DOWNTOWN STREETCAPE PAVERS
CONCRETE PAVERS TO BE INSTALLED PER CITY DETAIL 590.15



STANDARD PITCH CONCRETE CURB AND GUTTER



REVERSE PITCH CONCRETE CURB AND GUTTER



CONCRETE DEPRESSED CURB AND GUTTER

REVISED PER SITE CHANGES	07/07/25	JTA
REVISED PER CITY	05/14/25	JTA
REVISED PER IDOT & CITY	04/10/25	JTA
REVISED PER CITY	03/07/25	INS
REVISED PER CITY	11/26/24	INS
REVISIONS	DATE	BY

Kimley»Horn

© 2024 KIMLEY-HORN AND ASSOCIATES, INC.
570 LAKE COOK ROAD, SUITE 200
NAPERVILLE, IL 60563
PHONE: 847-260-7804
WWW.KIMLEY-HORN.COM

SCALE:

AS NOTED	DESIGNED BY: JTA
	DRAWN BY: TVC
	CHECKED BY: INS



SITE PLAN

CASEY'S
NAPERVILLE #6531

20 E. OGDEN AVE
NAPERVILLE, IL 60563

ORIGINAL ISSUE:
10/01/2024
KHA PROJECT NO.
168865042
SHEET NUMBER

C-101

EXHIBIT D