







Call Before You Dig

 1-800-892-0123

NORTH

GRAPHIC SCALE IN FEET
 0 30 60 120

- LEGEND**
-  # EXISTING TREE AND NUMBER
 -  TREE TO BE REMOVED
 -  TREE PROTECTION FENCE

Drawing made by: KUE LANDSCAPE ARCHITECTURE, INC. 12345 Main Street, Naperville, IL 60563. Project No. 1686.37000. Date: 3/22/2018. Scale: As Noted.
 This document, together with the contract documents, is the property of KUE LANDSCAPE ARCHITECTURE, INC. It is to be used only for the project and site for which it was prepared. It is not to be reproduced, stored in a retrieval system, or transmitted in any form or by any means, electronic, mechanical, photocopying, recording, or by any information storage and retrieval system, without the prior written permission of KUE LANDSCAPE ARCHITECTURE, INC.

REVISED PER CITY COMMENTS	09/23/18	REG
REVISED PER CITY COMMENTS	05/10/18	REG
REVISED PER CITY COMMENTS	05/10/18	REG
REVISED PER CITY COMMENTS	05/10/18	REG

Kimley-Horn
 CONSULTING ENGINEERS
 1001 MARSHVILLE ROAD, SUITE 300
 PRINCETON, IL 60155
 WWW.KIMLEY-HORN.COM

SCALE: AS NOTED
 DESIGNED BY: TMS
 DRAWN BY: SMV
 CHECKED BY: MM



PRESERVATION PLAN

CLOW CREEK FARM ADDITION
 103RD ST. AND BOOK RD.
 NAPERVILLE, IL 60564

ORIGINAL ISSUE:
 3/22/2018
 KHA PROJECT NO.
 1686.37000

SHEET NUMBER
L1.0

EXHIBIT C

Drawing name: N:\01\168637000_168637000.dwg User: kimberly.kimley Date: 03/22/2018 12:43pm
 U:\168637000\168637000.dwg User: kimberly.kimley Date: 03/22/2018 12:43pm
 This document, together with the contract and design permit number, is an instrument of service, to be retained only for the specific project and shall not be used for any other project without the written authorization and signature of Kimley-Horn and Associates, Inc. that the writer hereby so certifies and warrants, Inc.



REVISION	DATE	BY
1	05/07/18	MM
2	09/23/18	RBC
3	05/07/18	RBC
4	05/07/18	RBC
5	05/07/18	RBC
6	05/07/18	RBC
7	05/07/18	RBC
8	05/07/18	RBC
9	05/07/18	RBC
10	05/07/18	RBC
11	05/07/18	RBC
12	05/07/18	RBC
13	05/07/18	RBC
14	05/07/18	RBC
15	05/07/18	RBC
16	05/07/18	RBC
17	05/07/18	RBC
18	05/07/18	RBC
19	05/07/18	RBC
20	05/07/18	RBC
21	05/07/18	RBC
22	05/07/18	RBC
23	05/07/18	RBC
24	05/07/18	RBC
25	05/07/18	RBC
26	05/07/18	RBC
27	05/07/18	RBC
28	05/07/18	RBC
29	05/07/18	RBC
30	05/07/18	RBC
31	05/07/18	RBC
32	05/07/18	RBC
33	05/07/18	RBC
34	05/07/18	RBC
35	05/07/18	RBC
36	05/07/18	RBC
37	05/07/18	RBC
38	05/07/18	RBC
39	05/07/18	RBC
40	05/07/18	RBC
41	05/07/18	RBC
42	05/07/18	RBC
43	05/07/18	RBC
44	05/07/18	RBC
45	05/07/18	RBC
46	05/07/18	RBC
47	05/07/18	RBC
48	05/07/18	RBC
49	05/07/18	RBC
50	05/07/18	RBC
51	05/07/18	RBC
52	05/07/18	RBC
53	05/07/18	RBC
54	05/07/18	RBC
55	05/07/18	RBC
56	05/07/18	RBC
57	05/07/18	RBC
58	05/07/18	RBC
59	05/07/18	RBC

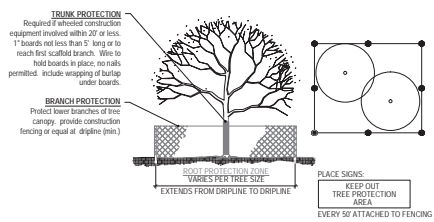
SCALE: AS NOTED
 DESIGNED BY: RBC
 DRAWN BY: MM
 CHECKED BY: MM
 PROJECT NO. 168637000
 SHEET NO. 168637000-01



PRESERVATION NOTES AND DETAILS

CLOW CREEK FARM ADDITION
 103RD ST. AND BOOK RD.
 NAPERVILLE, IL 60564

ORIGINAL ISSUE: 3/22/2018
 KHA PROJECT NO. 168637000
 SHEET NUMBER L1.1

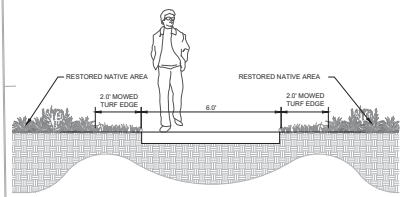
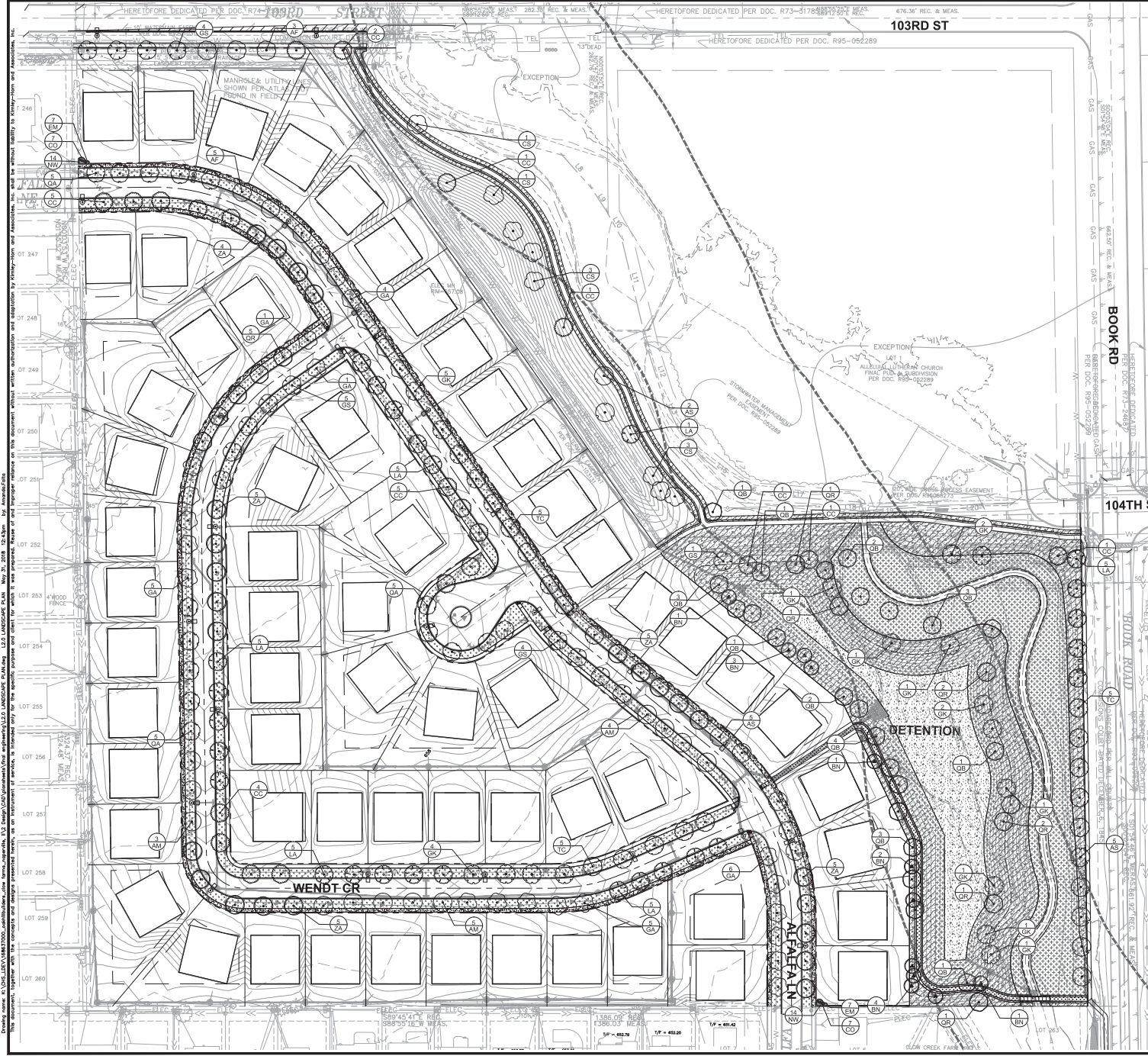


- TREE PROTECTION NOTES**
1. ALL TREES TO BE PROTECTED AND PRESERVED SHALL BE PER DETAIL. GROUPING OF MORE THAN ONE TREE MAY OCCUR.
 2. TREES TO BE PROTECTED AND PRESERVED SHALL BE IDENTIFIED ON THE TRUNK WITH WHITE SURVEY TAPE.
 3. TO PREVENT ROOT SMOTHERING, SOIL STOCKPILES, SUPPLIES, EQUIPMENT OR ANY OTHER MATERIAL SHALL NOT BE PLACED OR STORED WITHIN THE DRIP LINE OR WITHIN 15 FEET OF A TREE TRUNK, WHICHEVER IS GREATER.
 4. TREE ROOTS SHALL NOT BE CUT UNLESS CUTTING IS UNAVOIDABLE.
 5. WHEN ROOT CUTTING IS UNAVOIDABLE, A CLEAN SHARP CUT SHALL BE MADE TO AVOID SHREDDING OR SMASHING. ROOT CUTS SHOULD BE MADE BACK TO A LATERAL ROOT. WHENEVER POSSIBLE, ROOTS SHOULD BE CUT BETWEEN LATE FALL AND BUD OPENING, WHEN ROOT ENERGY SUPPLIES ARE HIGH AND CONDITIONS ARE LEAST FAVORABLE FOR DISEASE CAUSING AGENTS. EXPOSED ROOTS SHALL BE COVERED IMMEDIATELY TO PREVENT DEHYDRATION. ROOTS SHALL BE COVERED WITH SOIL OR BURLAP AND KEPT MOIST.
 6. WATERING OF PROTECTED TREES IN WHICH ROOTS WERE CUT SHALL BE PROVIDED BY THE CONTRACTOR.
 7. AUGER TUNNELING RATHER THAN TRENCHING SHOULD BE USED FOR UTILITY PLACEMENT WITHIN DRIP LINE.
 8. FENCING MATERIAL SHALL ENCLOSE ANY TREE OR SHRUB WHOSE OUTER DRIP LINE EDGE IS WITHIN 20 FEET OF ANY CONSTRUCTION ACTIVITIES.
 9. FENCING MATERIAL SHALL BE BRIGHT, CONTRASTING COLOR, DURABLE, AND A MINIMUM OF FOUR FEET IN HEIGHT.
 10. FENCING MATERIAL SHALL BE SET AT THE DRIP LINE OR 15 FEET FROM TREE TRUNK, WHICHEVER IS GREATER, AND MAINTAINED IN AN UPRIGHT POSITION THROUGHOUT THE DURATION OF CONSTRUCTION ACTIVITIES.
 11. ANY GRADE CHANGES (SUCH AS THE REMOVAL OF TOPSOIL OR ADDITION OF FILL MATERIAL) WITHIN THE DRIP LINE SHOULD BE AVOIDED FOR EXISTING TREES TO REMAIN. RETAINING WALLS AND TREE WELLS ARE ACCEPTABLE WHILE WHEN CONSTRUCTED PRIOR TO GRADE CHANGE.
 12. REFER TO PLANS FOR FENCE STAKING LOCATIONS.

1 TREE AND SHRUB PROTECTION NTS

Tree #	Botanical Name	Common Name	Size (DBH)	Condition	Action
1	Populus	Cottonwood	2-11"	Fair	Remove
2	Acer saccharum	Sugar Maple	3-11"	Good	Protect
3	Acer saccharum	Sugar Maple	3-0"	Good	Protect
4	Quercus	Oak	4-5"	Good	Protect
5	Quercus	Oak	3-9"	Good	Remove
6	Picea	Spruce	1-0"	Fair	Remove
7	Acer saccharum	Sugar Maple	1-8"	Good	Remove
8	Tilia	Linden	2-0"	Good	Remove
9	Acer saccharum	Sugar Maple	1-5"	Good	Remove
10	Celtis	Hickory	4-4"	Fair	Remove
11	Quercus	Oak	3-8",3-4"	Poor	Remove
12	Arbutus	Arbutus	4" Multi	Fair	Remove
13	Arbutus	Arbutus	4" Multi	Fair	Remove
14	Arbutus	Arbutus	4" Multi	Fair	Remove
15	Arbutus	Arbutus	4" Multi	Fair	Remove
16	Arbutus	Arbutus	4" Multi	Fair	Remove
17	Arbutus	Arbutus	4" Multi	Fair	Remove
18	Arbutus	Arbutus	4" Multi	Fair	Remove
19	Arbutus	Arbutus	4" Multi	Fair	Remove
20	Arbutus	Arbutus	2-6"	Fair	Remove
21	Arbutus	Arbutus	3-4"	Fair	Remove
22	Arbutus	Arbutus	2-6"	Fair	Remove
23	Acer saccharum	Sugar Maple	3-6"	Fair	Remove
24	Fraxinus	Ash	2-5"	Poor	Remove
25	Gleditsia triacanthos	Honey Locust	2-5"	Good	Remove
26	Gleditsia triacanthos	Honey Locust	2-8"	Good	Remove
27	Acer saccharum	Sugar Maple	3-6"	Good	Remove
28	Acer saccharum	Sugar Maple	2-1"	Good	Remove
29	Unknown	Unknown	4-5"	Fair	Remove
30	Unknown	Unknown	4-4"	Fair	Remove
31	Unknown	Unknown	2-4"	Fair	Remove
32	Unknown	Unknown	9",8"	Fair	Remove
33	Acer saccharum	Sugar Maple	1-7"	Fair	Remove
34	Morus	Mulberry	7-6"	Poor	Remove
35	Morus	Mulberry	3-6"	Poor	Remove
36	Morus	Mulberry	8",10"	Poor	Remove
37	Gleditsia triacanthos	Honey Locust	0",10",12"	Fair	Remove
38	Morus	Mulberry	6",8"	Poor	Remove
39	Morus	Mulberry	4-6"	Poor	Remove
40	Morus	Mulberry	2-7",8"	Poor	Remove
41	Gleditsia triacanthos	Honey Locust	2-0"	Poor	Remove
42	Gleditsia triacanthos	Honey Locust	1-4",18"	Fair	Remove
43	Gleditsia triacanthos	Honey Locust	1-8"	Fair	Remove
44	Gleditsia triacanthos	Honey Locust	1-7"	Fair	Remove
45	Gleditsia triacanthos	Honey Locust	1-8"	Fair	Remove
46	Acer saccharum	Sugar Maple	4-6"	Poor	Remove
47	Acer saccharum	Sugar Maple	4-11"	Poor	Remove
48	Gleditsia triacanthos	Honey Locust	8",2-9"	Fair	Remove
49	Gleditsia triacanthos	Honey Locust	6",8"	Fair	Remove
50	Gleditsia triacanthos	Honey Locust	8",10"	Fair	Remove
51	Morus	Mulberry	9-8"	Poor	Remove
52	Salix	Willow	8"	Excellent	Remove
53	Morus	Mulberry	3-7"	Poor	Remove
54	Morus	Mulberry	1-7",10"	Poor	Remove
55	Morus	Mulberry	9"	Poor	Remove
56	Morus	Mulberry	5-11"	Poor	Remove
57	Acer	Maple	4"	Good	Remove
58	Morus	Mulberry	2-7",10"	Poor	Remove
59	Morus	Mulberry	2-11",12"	Poor	Remove

EXHIBIT C



Drawing made by: NCH, LLC (NCH@NCHARCH.COM) on: 03/22/2018 12:52:34 PM. Project: 1686637000. Title: L2.0 LANDSCAPE PLAN. Date: 03/22/2018. By: Andrew Davis.
 This document is the property of NCH, LLC. It is to be used only for the project and site for which it was prepared. No part of this document may be reproduced, stored in a retrieval system, or transmitted in any form or by any means, electronic, mechanical, photocopying, recording, or by any information storage and retrieval system, without the prior written permission of NCH, LLC.

SCALE: AS NOTED	DESIGNED BY: NCH	CHECKED BY: MW
DRAWN BY: BMV	DATE: 03/22/2018	PROJECT: 1686637000
Kimley-Horn 1001 MANLYVILLE ROAD, SUITE 200 MANLYVILLE, IL 60954 WWW.KIMLEY-HORN.COM		
LANDSCAPE PLAN		
CLOW CREEK FARM ADDITION 103RD ST. AND BOOK RD. NAPERVILLE, IL 60564		
ORIGINAL ISSUE:	3/22/2018	
KHA PROJECT NO.	1686637000	
SHEET NUMBER	L2.0	

PARKWAY TREES ALONG ALFALFA LN AND WENDT CR TO BE PAID BY DEVELOPER AND PLANTED BY THE CITY OF NAPERVILLE.

EXHIBIT C

