

# EXHIBIT G

## McDowell Point - Façade Material Tabulation

Material	Northwest Elevation		West Elevation		East Elevation		North Elevation		South Elevation		Full Bldg Totals	
	Area	% MATL	Area	% MATL	Area	% MATL	Area	% MATL	Area	% MATL	Area	% MATL
Cast Stone Masonry (CS)	1,538.00	11.7%	627.00	8.9%	1,035.00	10.3%	1,104.00	7.7%	2,171.00	12.2%	6,475.00	10.4%
Brick Masonry (BR)	6,478.00	49.3%	3,471.00	49.4%	5,054.00	50.5%	7,439.00	52.0%	10,303.00	57.8%	32,745.00	52.5%
Cement Fiber Plank Siding/ Fiber Cement Panel (PS)	2,630.00	20.0%	1,591.00	22.7%	1,448.00	14.5%	2,530.00	17.7%	2,967.00	16.6%	11,166.00	17.9%
Stamped Concrete (CC)	2,107.00	16.0%	967.00	13.8%	1,885.00	18.8%	2,450.00	17.1%	2,380.00	13.4%	9,789.00	15.7%
Metal Louver (LV)	396.00	3.0%	288.00	4.1%	590.00	5.9%	576.00	4.0%	0.00	0.0%	1,850.00	3.0%
Overhead Colling Door	0.00	0.0%	80.00	1.1%	0.00	0.0%	210.00	1.5%	0.00	0.0%	290.00	0.5%
<b>Total Gross Area</b>	<b>13,149.00</b>		<b>7,024.00</b>		<b>10,012.00</b>		<b>14,309.00</b>		<b>17,821.00</b>		<b>62,315.00</b>	

Stamped Concrete to be: Form liner Cast in Place Concrete, sealed to look like Cast Stone Product

Cement Fiber Plank Siding to be: Hardie Plank Siding or Equal

Brick Masonry to be: GlenGery Brick from or Equal

Cast Stone Masonry to be: Savanna Stone, Franklin Cast Stone Masonry or Equal

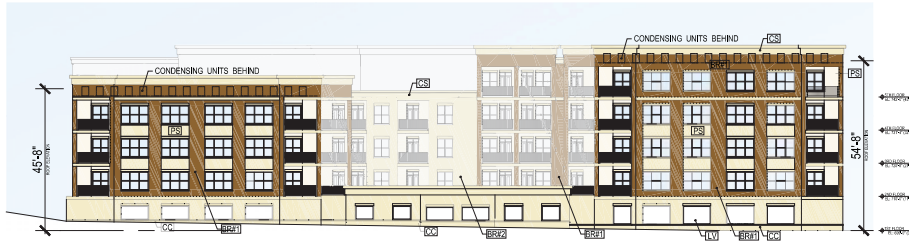
# EXHIBIT G



1. NORTH ELEVATION



2. NORTHWEST ELEVATION



3. EAST ELEVATION



4. WEST ELEVATION



5. SOUTH ELEVATION

## MATERIAL NOTES

- CS Cast Stone Masonry
- BR#1 Brick Masonry color #1
- BR#2 Brick Masonry color #2
- PS Cement Fiber Plank Siding / Fiber Cement Panel
- CC Stamped Concrete
- LV Metal Louver
- OD Overhead Coiling Door

A9

# EXHIBIT G



## 1. NORTH ELEVATION

### MATERIAL NOTES

- CS Cast Stone Masonry
- BR#1 Brick Masonry color #1
- BR#2 Brick Masonry color #2
- PS Cement Fiber Plank Siding / Fiber Cement Panel
- CC Stamped Concrete
- LV Metal Louver
- OD Overhead Coiling Door

A10

# EXHIBIT G



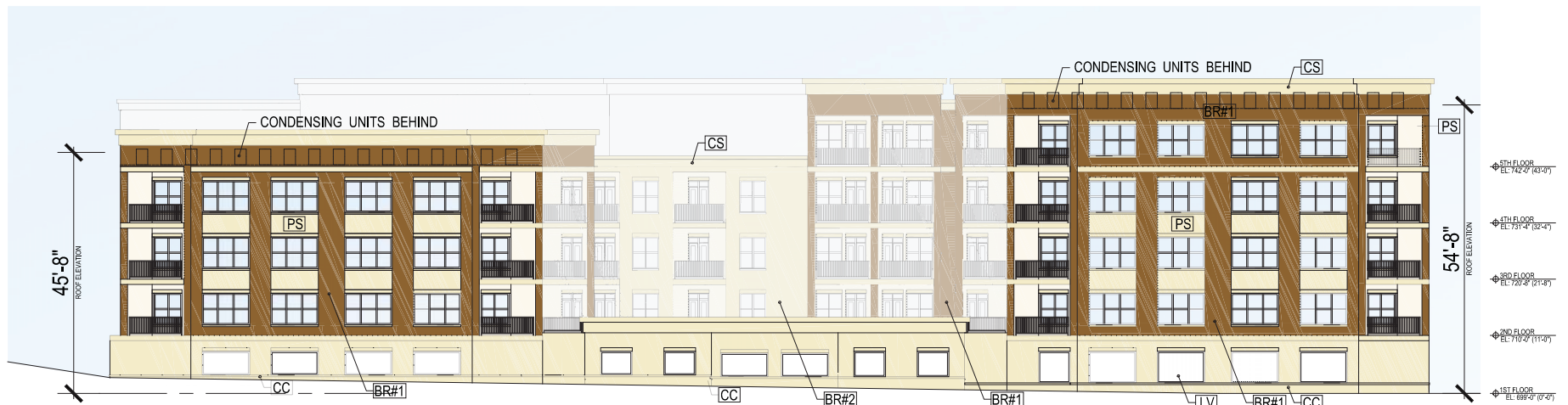
## 2. NORTHWEST ELEVATION

### MATERIAL NOTES

- CS Cast Stone Masonry
- BR#1 Brick Masonry color #1
- BR#2 Brick Masonry color #2
- PS Cement Fiber Plank Siding / Fiber Cement Panel
- CC Stamped Concrete
- LV Metal Louver
- OD Overhead Coiling Door

A11

# EXHIBIT G



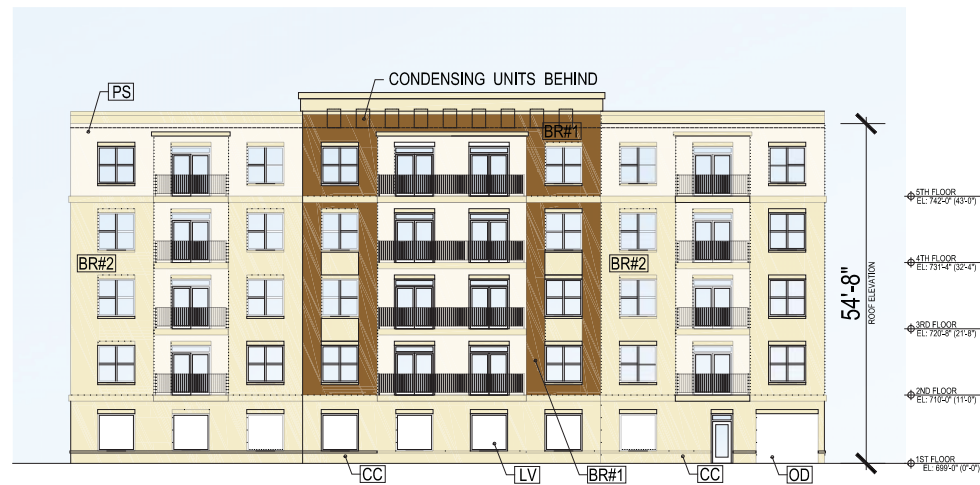
## 3. EAST ELEVATION

### MATERIAL NOTES

- CS Cast Stone Masonry
- BR#1 Brick Masonry color #1
- BR#2 Brick Masonry color #2
- PS Cement Fiber Plank Siding / Fiber Cement Panel
- CC Stamped Concrete
- LV Metal Louver
- OD Overhead Coiling Door

A12

# EXHIBIT G



## 4. WEST ELEVATION

### MATERIAL NOTES

- CS Cast Stone Masonry
- BR#1 Brick Masonry color #1
- BR#2 Brick Masonry color #2
- PS Cement Fiber Plank Siding / Fiber Cement Panel
- CC Stamped Concrete
- LV Metal Louver
- OD Overhead Coiling Door

A13

# EXHIBIT G



## 5. SOUTH ELEVATION

### MATERIAL NOTES

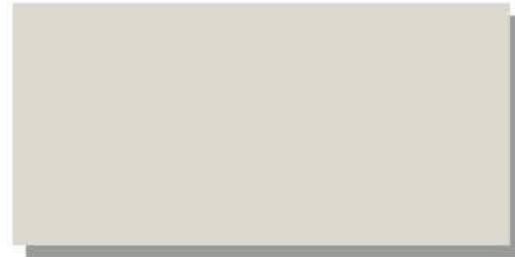
- CS Cast Stone Masonry
- BR#1 Brick Masonry color #1
- BR#2 Brick Masonry color #2
- PS Cement Fiber Plank Siding / Fiber Cement Panel
- CC Stamped Concrete
- LV Metal Louver
- OD Overhead Coiling Door

A14

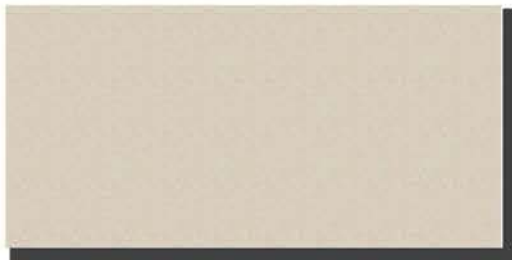
EXHIBIT G



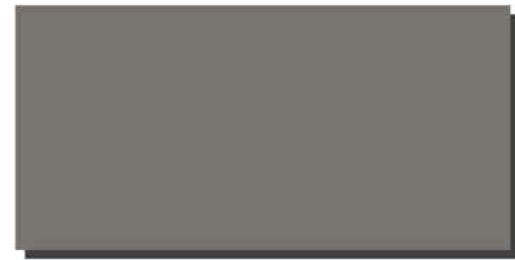
CASTSTONE: ADVANCE ARCHITECTURAL STONE  
OR EQUIVALENT  
COLOR: SAND STONE.



CEMENT FIBER PLANK SIDING/ FIBER CEMENT PANEL:  
JAMES HARDIE OR EQUIVALENT  
COLOR: SW 9166 DRIFT OF MIST



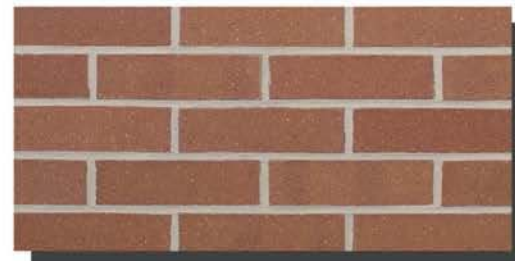
STAMPED CONCRETE:  
COLOR: SW 9165 GOSSAMER VEIL



METAL AWNING/ METAL LOUVER/OVERHEAD COILING DOOR :  
BERRIDGE MANUFACTURING COMPANY OR EQUIVALENT  
COLOR: ZINC GREY



BRICK #1 GLEN -GERY BRICK OR EQUIVALENT  
COLOR: WILMETTE IRONSPOT



BRICK #1 GLEN -GERY BRICK OR EQUIVALENT  
COLOR: WALNUT VELOUR