

GENERAL NOTES:

- THESE PLANS ARE BASED ON THE ALTA/NSPS LAND TITLE AND TOPOGRAPHIC SURVEY (SURVEY PROJECT #180019 DATED 02/06/19) PREPARED BY COMPASS SURVEYING LTD 2631 GINGER WOODS PARKWAY, STE 100, AURORA, IL 60502 (630) 820-9100
- PRIOR TO CONSTRUCTION, CONTRACTOR TO CONTACT THE DESIGN ENGINEER AND ARCHITECT TO VERIFY THAT THEY ARE WORKING FROM THE MOST CURRENT SET OF PLANS AND SPECIFICATIONS.

ON SITE PARKING DATA
 PARKING REQUIREMENT - 4.5 SPACES PER 1,000 SQ FT FOR A CONVENIENCE STORE (3,036 SQ FT) ~ 14 SPACES REQUIRED

REGULAR SPACES	15
ADA ACCESSIBLE SPACES	1
TOTAL SPACES	16

SITE DATA

LOT AREA	= 44,124 S.F. (1,013 AC.)
IMPERVIOUS AREA	= 28,295 S.F. (0.650 AC.)(64%)
PERVIOUS AREA	= 15,829 S.F. (0.363 AC.)(36%)

PLANT LIST

SHADE, ORNAMENTAL, AND CONIFEROUS TREES

QTY.	ABRV.	BOTANICAL NAME	COMMON NAME	SEE
1	RVB	Betula nigra 'Culm'	Heritage River Birch	14'HT.
4	SLH	Gladiolus hybridus var. 'hermilia'	Skyline Honeylocust	2 1/2' CAL
2	KCT	Gymnocladus dioica	Kentucky Coffee Tree	2 1/2' CAL
2	SWO	Quercus laevis	Swamp White Oak	2 1/2' CAL
8	EGA	Thuja occidentalis 'Emerald'	Emerald Green Arborvitae	6'
17	TC	Thuja occidentalis 'Techny'	Techny Arborvitae	6'

FLOWERING AND EVERGREEN SHRUBS

QTY.	ABRV.	BOTANICAL NAME	COMMON NAME	SEE
35	EB	Aronia melanocarpa 'Morton'	Empire Beauty Black Chokeberry	5 GA.
11	GDW	Cornus racemosa	Gray Dogwood	48" HT.
1	DBB	Eunonymus alatus 'Compactus'	Dwarf Burning Bush	5 GA.
3	OFH	Hydrangea paniculata 'Buck'	QuickFire Hydrangea	5 GA.
23	LH	Hydrangea paniculata 'Limelight'	Light Blue Hydrangea	5 GA.
23	GLS	Rhus aromatica 'Glow-Low'	Glow-Low Sumac	5 GA.
7	EKR	Rosa 'Blair'	Easy Green Knock Out Rose	3 GA.
6	DPS	Spiraea japonica 'Tracy'	Double Pinyon Spirea	3 GA.
13	MKL	Spiraea palmata 'Vivis King'	Mus King Spirea	3 GA.
7	BMV	Viburnum dentatum 'Cherokee'	Cherokee Viburnum	5 GA.
10	CLV	Viburnum dentatum 'Symmetricum'	Cherokee Viburnum	4" HT.
3	JVB	Viburnum x juddii	Judd Viburnum	38" HL.
22	DHW	Washingtonia 'Dark Horse'	Dark Horse Yucca	3 GA.
18	DNY	Taxus media 'Densiformis'	Densiform Yew	5 GA.

PERENNIALS, ORNAMENTAL GRASS AND GROUNDCOVERS

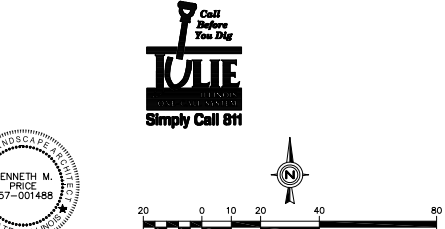
QTY.	ABRV.	BOTANICAL NAME	COMMON NAME	SEE
25	FRG	Calamagrostis brachytricha	Korean Feather Reed Grass	1 GA.
66	SDO	Hemerocallis 'Shirley Hoop O'oo'	Shirley Hoop Petal	1 GA.
19	DTB	Penstemon 'Blue Dawn Towers'	Dark Towers Penstemon	1 GA.
24	LSB	Rudbeckia 'Lutea' 'Vinh's Little Suzie'	Little Suzie Black-eyed Susan	1 GA.
9	NES	Sedum spectabile 'Neon'	Neon Sedum	1 GA.
9	KFF	Calamagrostis acutiflora 'Kar' 'Foster'	Kar/Foster Feather Reed Grass	1 GA.
26	PDS	Sporobolus heterostachyus	Prohibit Dropseed	1 GA.

NAPERVILLE LANDSCAPE - UTILITY NOTE:
 TREES SHALL BE INSTALLED A MINIMUM OF FIVE (5) FEET HORIZONTALLY FROM UNDERGROUND ELECTRICAL FEEDERS, SANITARY SEWERS, SANITARY SERVICES, WATERMANS, WATER SERVICES, AND STORM SEWER LINES.

TREES SHALL BE INSTALLED A MINIMUM OF TEN (10) FEET HORIZONTALLY FROM UTILITY STRUCTURES AND APPURTENANCES INCLUDING, BUT NOT LIMITED TO, MANHOLES, VALVE VAULTS, VALVE BOXES AND FIRE HYDRANTS.

NO TREES, SHRUBS OR OBSTACLES WILL BE ALLOWED 10' IN FRONT OF, 5' ON THE SIDES, AND 7' TO THE REAR OF THE ELECTRICAL TRANSFORMERS.

PARKWAY TREES SHALL NOT BE PLACED CLOSER THAN 4' FROM PUBLIC SIDEWALKS



LANDSCAPE PLAN
 PREPARED BY KENNETH M. PRICE, RLA

LANDSCAPE PLAN
 L-1

Prepared For:
 Velocity
 400 N. State St.
 Chicago, IL 60654

Prepared By:
 Walfordmark
 Engineering & Design
 9611 W. Ogden Avenue
 Naperville, Illinois
 phone: 630.276.1800 fax: 630.276.2600 www.walfordmark.com

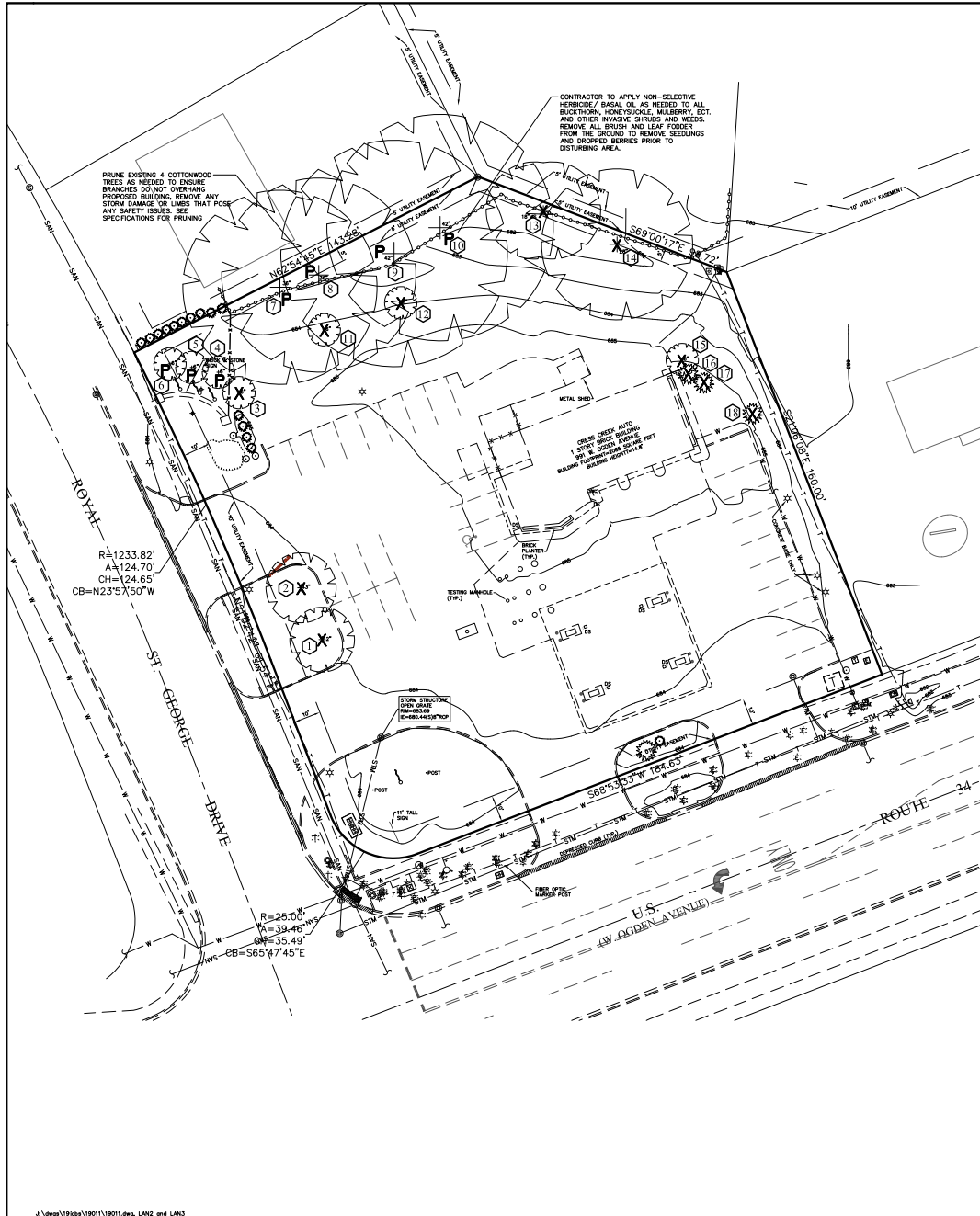
Checked by: B. PERRY
Design by: S. SHAMK
Drawn by: S. SHAMK
Date: MARCH 13, 2019
Scale: 1" = 20'
Project No.: 19-011

DATE
 7/17/19
 7/17/19
 7/17/19

REVISIONS

NO.	DESCRIPTION	DATE
1	REVISION PER CITY OF NAPERVILLE COMMENTS	7/17/19
2	REVISION PER CITY OF NAPERVILLE COMMENTS	7/17/19
3	NO REVISIONS	

EXHIBIT E



TREE PRESERVATION/REMOVAL AND EXISTING LANDSCAPE NOTES:

- ALL TREES TO REMAIN AND BE PROTECTED. THEY SHALL HAVE PROTECTIVE FENCING INSTALLED PER THE DETAIL PROVIDED IF CONSTRUCTION IS IN PROXIMITY PRIOR TO THE COMMENCEMENT OF ANY CONSTRUCTION ACTIVITY ON SITE. ANY DAMAGE DONE TO A PROTECTED TREE DURING CONSTRUCTION SHALL BE REPORTED TO THE LANDSCAPE DESIGNER.
- IF TREES HAVE TO BE REMOVED, THEY SHALL HAVE THE STUMP GROUND DOWN A MINIMUM OF 18" BELOW THE ADJACENT GRADE UNLESS OTHER ARRANGEMENTS HAVE BEEN MADE AND AGREED TO BY THE OWNER AND LANDSCAPE DESIGNER. ALL DEBRIS FROM THE REMOVED TREE/STUMP SHALL BE HAULLED OFF-SITE.
- ALL DISTURBED AREAS SHALL BE RESTORED TO MATCH EXISTING OR PROPOSED CONDITIONS, INCLUDING BACKFILLING OF HOLES LEFT FROM LANDSCAPE MATERIAL REMOVAL. CONTRACTOR TO MAINTAIN POSITIVE DRAINAGE AT ALL TIMES.
- TREES THAT NEED TO BE PRUNED SHALL BE PRUNED BY AN U.S.A. CERTIFIED ARBORIST UNLESS OTHERWISE APPROVED BY THE LANDSCAPE DESIGNER.
- TREES WHICH ARE NOTED TO REMAIN AND BE PROTECTED, AND WHOSE CANOPIES/ROOT SYSTEMS FALL WITHIN AN AREA OF DEMOLITION/CONSTRUCTION, SHALL HAVE ALL ROOTS EXPOSED BY HAND AND CLEANLY PRUNED, USING U.S.A. APPROVED METHODS.
- NO CONSTRUCTION ACTIVITY, AND/OR PLACEMENT OF EQUIPMENT, MATERIALS, OR SPOILS STORAGE SHALL BE PERMITTED WITHIN THE ROOT ZONE OF ANY PROTECTED TREE. NO EXCESS SOIL, ADDITIONAL FILL, CRUSHED LIMESTONE LIQUIDS, OR CONSTRUCTION DEBRIS SHALL BE PLACED WITHIN THE ROOT ZONE OR LOCATED AT A HIGHER LOCATION WHERE DRAINAGE TOWARD THE TREES COULD POTENTIALLY AFFECT THE HEALTH OF SAID TREES.
- IN THE EVENT THAT AN UNDERGROUND UTILITY LINE/PIPE IS PROPOSED TO BE LOCATED WITHIN FIVE FEET OF THE TRUNK OF A TREE DESIGNATED FOR PRESERVATION, THAT UTILITY LINE/PIPE SHALL (WHERE POSSIBLE) BE AGURED TO PREVENT DAMAGE TO THE ROOT SYSTEM OF THE TREE.
- DURING THE CONSTRUCTION PERIOD NO ATTACHMENTS, SIGNS, FENCES, WRES, ETC, OTHER THAN APPROVED FOR BRACING, GUYING OR WRAPPING, SHALL BE ATTACHED TO ANY TREE.
- UNLESS OTHERWISE NOTED ALL EXISTING ON-SITE PLANT MATERIAL NOT EFFECTED BY CONSTRUCTION OR THE PROPOSED LANDSCAPE, SHALL BE PROTECTED AS PART OF THIS PLAN. EXISTING LANDSCAPE IN AREAS OF CONSTRUCTION AND PROPOSED LANDSCAPE SHALL BE REMOVED.
- ALL EXISTING PLANT MATERIAL ON THIS PLAN HAS BEEN SHOWN FOR GRAPHIC AND DESIGN PURPOSES ONLY. ALL EXISTING PLANT MATERIAL, NOT SHOWN ON THE LAND SURVEY PROVIDED, WAS LOCATED IN THE FIELD BY THE LANDSCAPE DESIGNER AND THEREFORE IS APPROXIMATE IN ITS LOCATION AS SHOWN ON THIS PLAN. THIS PLAN DOES NOT MAKE ANY CLAIMS ABOUT THE VIABILITY OR SAFETY OF ANY OF THE PLANT MATERIAL, DESCRIBED HEREIN OR OBSERVED IN THE FIELD.

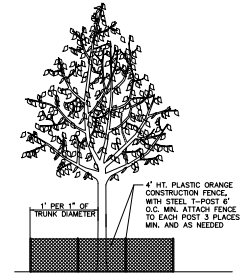
GENERAL NOTES:
 1. THESE PLANS ARE BASED ON THE ALTA/NSPS LAND TITLE AND TOPOGRAPHIC SURVEY (SURVEY PROJECT #18.0019 DATED 02/06/19) PREPARED BY COMPASS SURVEYING LTD 2631 GINGER WOODS PARKWAY, STE 100, AURORA, IL 60502 (630) 820-9100
 2. PRIOR TO CONSTRUCTION, CONTRACTOR TO CONTACT THE DESIGN ENGINEER AND ARCHITECT TO VERIFY THAT THEY ARE WORKING FROM THE MOST CURRENT SET OF PLANS AND SPECIFICATIONS.

TREE PRESERVATION AND REMOVALS KEY

- X** = REMOVE EXISTING TREE INCLUDING STUMP AND STUMP GRINDINGS/REMOVE BRUSH
- P** = EXISTING TREE TO BE PROTECTED
- = TREE PROTECTION FENCE

TREE INVENTORY

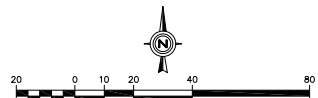
TREE #	BOTANICAL NAME	COMMON NAME	CONDITION	SIZE	ACTION	REASON
1	MALUS SSP.	CRABAPPLE	3	12"	REMOVE	CONSTRUCTION
2	MALUS SSP.	CRABAPPLE	3	13"	REMOVE	CONSTRUCTION
3	PYRUS CALLERYANA	FLOWERING PEAR	3	6"	REMOVE	CONSTRUCTION
4	PYRUS CALLERYANA	FLOWERING PEAR	3	6"	PRESERVE	
5	PYRUS CALLERYANA	FLOWERING PEAR	3	6"	PRESERVE	
6	PYRUS CALLERYANA	FLOWERING PEAR	3	6"	PRESERVE	
7	POPULUS DELTOIDES	COTTONWOOD	3	36"	PRESERVE. PRUNE	
8	POPULUS DELTOIDES	COTTONWOOD	3	36"	PRESERVE. PRUNE	
9	POPULUS DELTOIDES	COTTONWOOD	3	42"	PRESERVE. PRUNE	
10	POPULUS DELTOIDES	COTTONWOOD	3	42"	PRESERVE. PRUNE	
11	ACER SACCHARINUM	SILVER MAPLE	3	6"	REMOVE	CONSTRUCTION
12	ACER SACCHARINUM	SILVER MAPLE	3	6"	REMOVE	CONSTRUCTION
13	MORUS ALBA	WHITE MULBERRY	3	18"	REMOVE	INVASIVE/AGGRESSIVE HAZARDOUS TRUNK-SPLITTING
14	ACER SACCHARINUM	SUGAR MAPLE	2	28"	REMOVE	HAZARDOUS TRUNK-SPLITTING
15	MORUS ALBA	WHITE MULBERRY	3	6"	REMOVE	CONSTRUCTION
16	ARBORVITAE SSP.	ARBORVITAE	2	4"	REMOVE	CONSTRUCTION
17	ARBORVITAE SSP.	ARBORVITAE	2	6"	REMOVE	CONSTRUCTION
18	ARBORVITAE SSP.	ARBORVITAE	2	6"	REMOVE	CONSTRUCTION



TREE PROTECTION DETAIL
NOT TO SCALE.



TREE INVENTORY AND PLAN
PREPARED BY
KENNETH M. PRICE, R.L.A.



TREE PRESERVATION AND REMOVALS PLAN

NO.	REVISIONS	DATE
1	REVISION PER CITY OF NAPEVILLE COMMENTS	4/1/19
2	NO REVISIONS	4/1/19
3	NO REVISIONS	4/1/19
4	NO REVISIONS	7/7/19

Prepared For:
 Velocity
 400 N. State St.
 Chicago, IL 60654
PROPOSED FUEL CENTER - NAPEVILLE, IL
 001 W. Ogden Avenue
 Naperville, Illinois

Prepared By:



CHECKED BY: B. PERRY
 DESIGN BY: S. SMARK
 DRAWN BY: S. SMARK
 DATE: MARCH 13, 2019
 SCALE: 1" = 20'
 PROJECT NO.: 19-011

L-2

TREE PRESERVATION AND REMOVALS PLAN