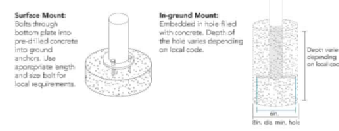


SCALE: 1" = 30'

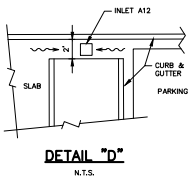
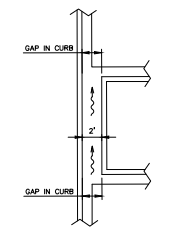
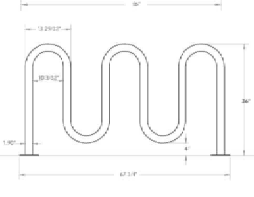
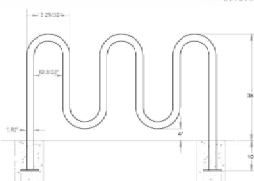
7-Bike Wave Rack, 1 7/8" O.D. Model: 536-1351  
 Specifications Page 1



**Product Details:**  
 Dimensions: Length 66" - 67 3/4" / Depth 1.5" / Height 36" (46" in Ground / Mounting Plates)  
 Weight: S-Flare Mount: 75 lbs In-ground: 75 lbs  
 Styling: Contemporary  
 Capacity: Holds 7 Bikes  
 Finish: Double sided on standard coat; Black only  
 Construction: Serrated Duty 1 7/8" O.D. Steel



7-Bike Wave Rack, 1 7/8" O.D. Model: 536-1351  
 Specifications Page 2



**PARKING PROVIDED**  
 12S REGULAR (P/418)  
 5 HANDICAP (16/118)  
 27 LOADING/ORO/OFF ZONE  
 7 BIKE PARKING

- ### PLAN NOTES
- ALL DIMENSIONS ARE TO THE BACK OF CURB OR FACE OF BUILDING UNLESS OTHERWISE NOTED.
  - ALL PROPOSED CURB IS 6-1/2" UNLESS OTHERWISE NOTED. PROVIDE DEPRESSED CURB AND ACCESSIBLE RAMPS AND DETECTABLE MARKING STRIPS WHERE INDICATED. GUTTER TO BE REVERSE PITCH WHERE INDICATED.
  - ACCESSIBLE PARKING SPACE MARKINGS PER NAPERVILLE STANDARD 590.35. SEE SHEET 14.
  - COMMERCIAL DRIVEWAY ENTRANCES TO BE CONSTRUCTED PER NAPERVILLE STANDARD 590.05. SEE SHEET 14.

DATE: 6-25-19
SCALE: 1"=30'

PROJECT NO. 2005-007TRU
PROJECT OF 9 17

DATE: 6-25-19
SCALE: 1"=30'

PROJECT NO. 2005-007TRU
PROJECT OF 9 17

DATE: 6-25-19
SCALE: 1"=30'

PROJECT NO. 2005-007TRU
PROJECT OF 9 17

**INTECH CONSULTANTS, INC.**  
 1888 UNIVERSITY LANE, SUITE D  
 LESLIE, ILLINOIS 60532  
 PHONE: 630-864-5056  
 FAX: 630-864-5058

**M CUBE GLOBAL, INC.**  
 3701 WEST ALGOUN RD  
 SUITE 740  
 ROLLING MEADOWS, IL 60008

**TRU BY HILTON**  
 1805 WEST DIEHL ROAD  
 NAPERVILLE, IL

**SITE GEOMETRIC PLAN**