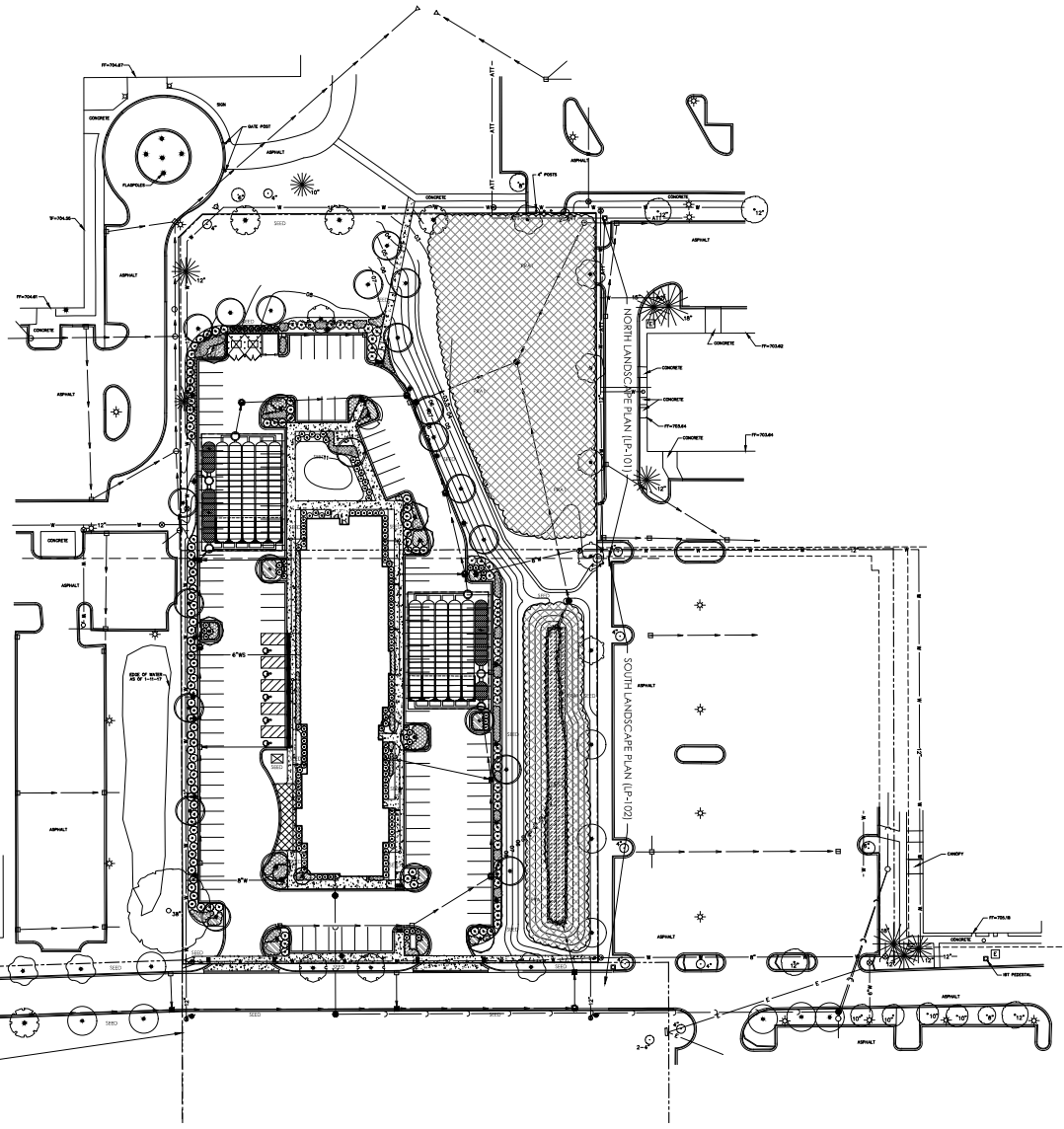


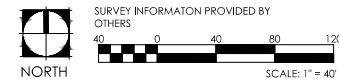
PLANT SCHEDULE

TREES	BOTANICAL / COMMON NAME	CONT	GAL	QTY
ACE AU2	Acer freemanii 'Autumn Blaze Maple	8 & 8	2.5' Cal	13
AME COL	Amandier x grandiflora 'Cole's Select' / Serviceberry	8 & 8	2.5' Cal	1
CER FLA	Cercis canadensis 'Flame' / Eastern Red Bud	8 & 8	2.5' Cal	2
GIN AUT	Ginkgo biloba 'Autumn Gold' TM / Maidenhair Tree	8 & 8	2.5' Cal	2
GLE SKY	Gleditsia triacanthos 'Skyline' / Skyline Honey Locust	8 & 8	2.5' Cal	24
GYM DIO	Gymnocladus dioica 'Espresso' / Kentucky Coffeetree	8 & 8	2.5' Cal	6
PLA BLO	Platanus x acerifolia 'Bloodgood' / London Plane Tree	8 & 8	2.5' Cal	10
POP PR2	Populus tremuloides 'Prairie Gold' / Prairie Gold Aspen	8 & 8	2.5' Cal	6
QUE BIC	Quercus bicolor / Swamp White Oak	8 & 8	2.5' Cal	6
TIL RED	Tilia americana 'Redmond' / Redmond American Linden	8 & 8	2.5' Cal	6
SHRUBS	BOTANICAL / COMMON NAME	CONT	SIZE	QTY
CAL SWE	Calycanthus floridus / Sweet Shrub	3 gal	30" H.	17
CLE HUM	Clethra alifolia 'Hummingbird' / Summersweet	3 gal	30" H.	18
EUI COM	Euonymus alatus 'Compactus' / Compact Burning Bush	3 gal	24" H.	18
JUN BL3	Juniperus horizontalis 'Blue Chip' / Blue Chip Juniper	8 & 8		57
RIB GRE	Ribes alpinum 'Green Mound' / Green Mound Alpine Currant	3 gal	24" H.	37
ROS RAD	Rosa x 'Knockout' TM / Rose	3 gal	24" H.	32
SPFLA	Spiraea japonica 'Neon Flash' / Neon Flash Spirea	3 gal	24" H.	53
TAX TAU	Taxus media 'Tauntonii' / Taunton Yew	8 & 8	24" H.	31
THU TEC	Thuja occidentalis 'Techy' / Techy Arborvitae	8 & 8	4' H.	8
VB AUT	Viburnum dentatum 'Autumn Jazz' / Southern Arrowwood	3 gal	24" H.	4
GROUND COVERS	BOTANICAL / COMMON NAME	CONT	SPACING	QTY
ACH MOO	Achillea x 'Moonshine' / Moonshine Yarrow	1 gal	24" o.c.	152
CAL KAR	Calamagrostis x acutiflora 'Karl Foerster' / Feather Reed Grass	1 gal	18" o.c.	262
HEM APA	Hemerocallis x 'Chicago Apache' / Davilly	1 gal	18" o.c.	195
HEM ORO	Hemerocallis x 'Stella de Oro' / Stella de Oro Daylily	1 gal	18" o.c.	183
HEU OZ5	Heuchera x 'Obsidian' / Coral Bell	1 gal	18" o.c.	176
MOL HB1	Molinia caerulea 'Heidebraut' / Purple Moor Grass	1 gal	24" o.c.	8
PAN HAR	Panicum virgatum 'Heavy Metal' / Blue Switch Grass	1 gal	24" o.c.	134
VIN DAR	Vincia minor 'Dart's Blue' / Dart's Blue Periwinkle	flot	12" o.c.	669
SEED	Bluegrass, Ryegrass & Fescue Blend with Blanket	40,300 SF		
PRA1	Cardinalis Stormwater Seed Mix with Blanket	30,000 SF		
PRA2	Cardinalis Emergent Wetland Seed Mix with Blanket	2,500 SF		



SITE LANDSCAPE REQUIREMENTS		
FOUNDATION	REQUIRED	PROVIDED
1 PLANT UNIT PER 3'	222	311
PERIMETER		PROVIDED
1 SHADE TREE/EVERGREEN TREE PER 70' MIN		1 PER 60' WHERE POSSIBLE
PARKWAY		PROVIDED
1 SHADE TREE PER 40' MIN		1 PER 35' WHERE POSSIBLE

NOTE:  
SEED ALL AREAS DISTURBED DURING CONSTRUCTION



TRU BY HILTON  
1809 WEST DIEHL ROAD  
NAPERVILLE, IL



1280 Iroquois Avenue  
Suite 110  
Naperville, Illinois 60563  
Telephone: (630) 428-3134  
Fax: (630) 428-3159  
www.design-perspectives.net

REV.	COMMENT	DATE
1	RESUBMITTAL	7/31/19

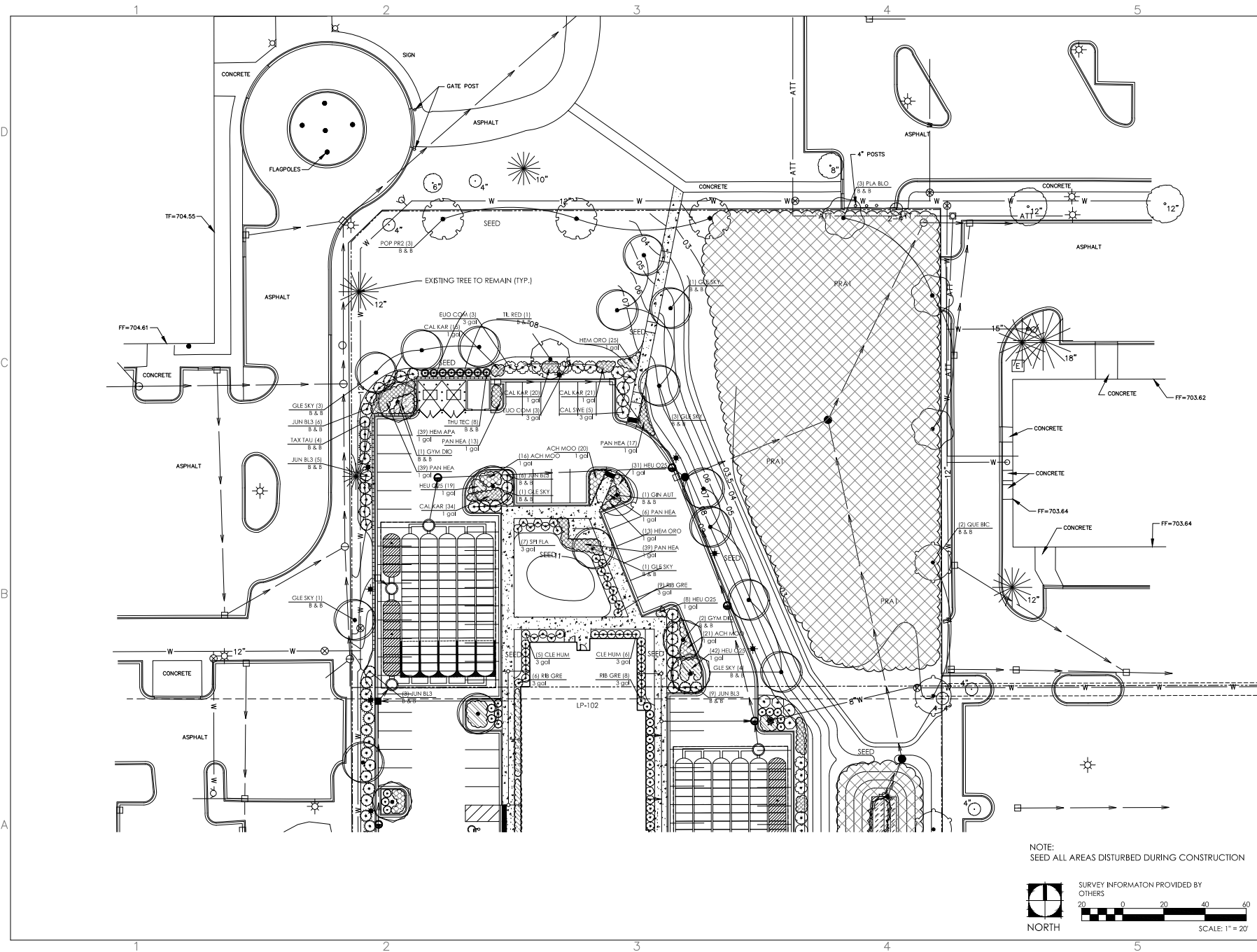


DATE: 6/5/2019  
JOB NO.: 19-328T  
DRAWN BY: CE  
CHECKED BY: TS

DRAWING TITLE:  
OVERALL  
LANDSCAPE PLAN  
SHEET NO.:

LP-100  
© DESIGN PERSPECTIVES, INC. ALL RIGHTS RESERVED

EXHIBIT C



TRU BY HILTON  
1809 WEST DIEHL ROAD  
NAPERVILLE, IL



1280 Iroquois Avenue  
Suite 110  
Naperville, Illinois 60563  
Telephone: (630) 428-3134  
Fax: (630) 428-3159  
www.design-perspectives.net

REV.	COMMENT	DATE
1	RESUBMITTAL	7/31/19



DATE: 6/5/2019  
JOB NO.: 19-328T  
DRAWN BY: CE  
CHECKED BY: TS

DRAWING TITLE:  
**NORTH LANDSCAPE PLAN**  
SHEET NO.:

**LP-101**  
© DESIGN PERSPECTIVES INC. ALL RIGHTS RESERVED

NOTE:  
SEED ALL AREAS DISTURBED DURING CONSTRUCTION

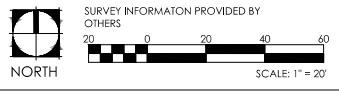
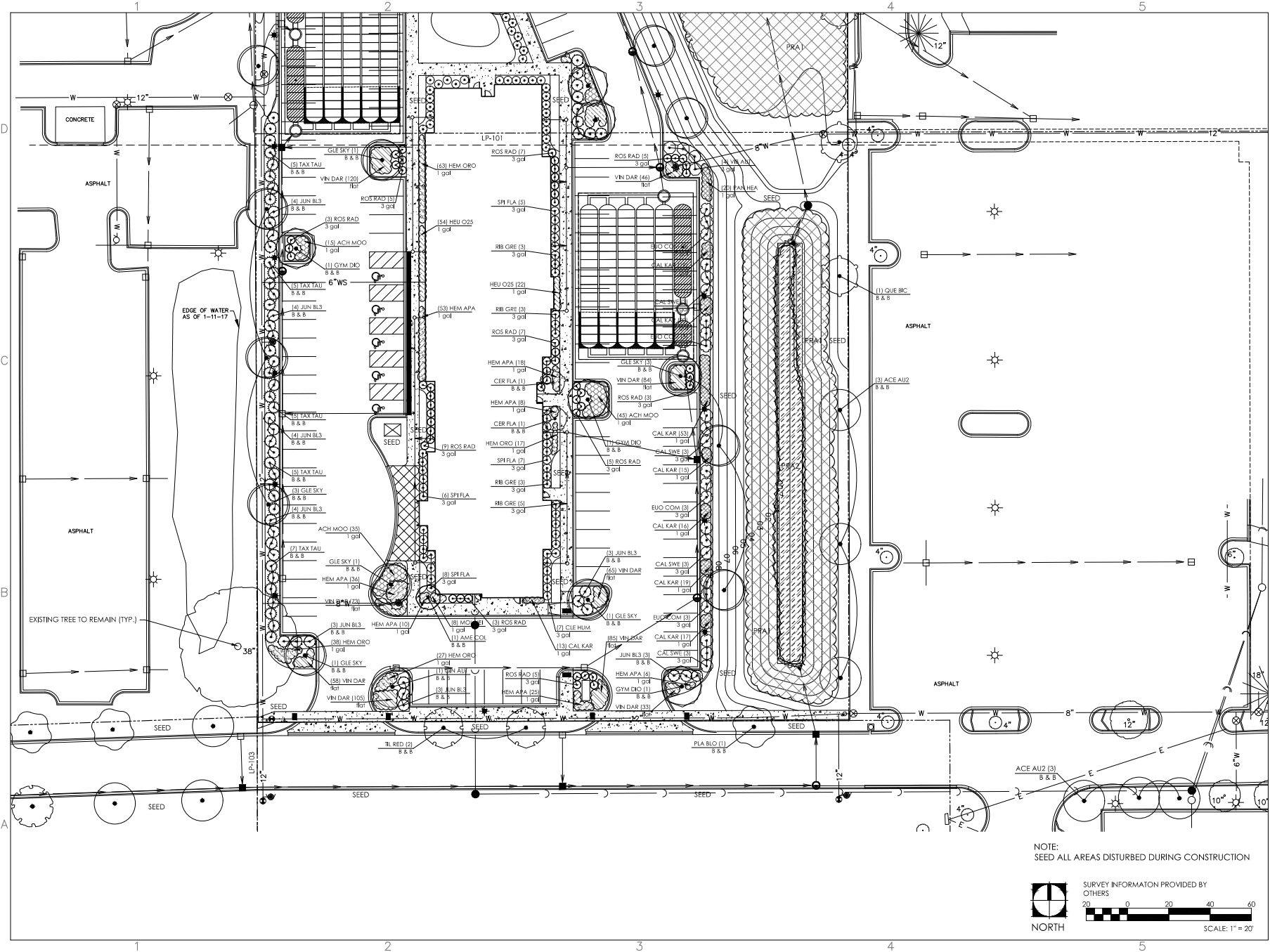


EXHIBIT C

TRU BY HILTON  
1809 WEST DIEHL ROAD  
NAPERVILLE, IL



1280 Iroquois Avenue  
Suite 110  
Naperville, Illinois 60563  
Telephone: (630) 428-3134  
Fax: (630) 428-3159  
www.design-perspectives.net



REV.	COMMENT	DATE
1	RESUBMITTAL	7/31/19



DATE: 6/5/2019  
JOB NO.: 19-328T  
DRAWN BY: CE  
CHECKED BY: TS

DRAWING TITLE:  
**SOUTH LANDSCAPE PLAN**  
SHEET NO.:

**LP-102**  
© DESIGN PERSPECTIVES, INC. ALL RIGHTS RESERVED

NOTE:  
SEED ALL AREAS DISTURBED DURING CONSTRUCTION

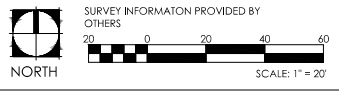
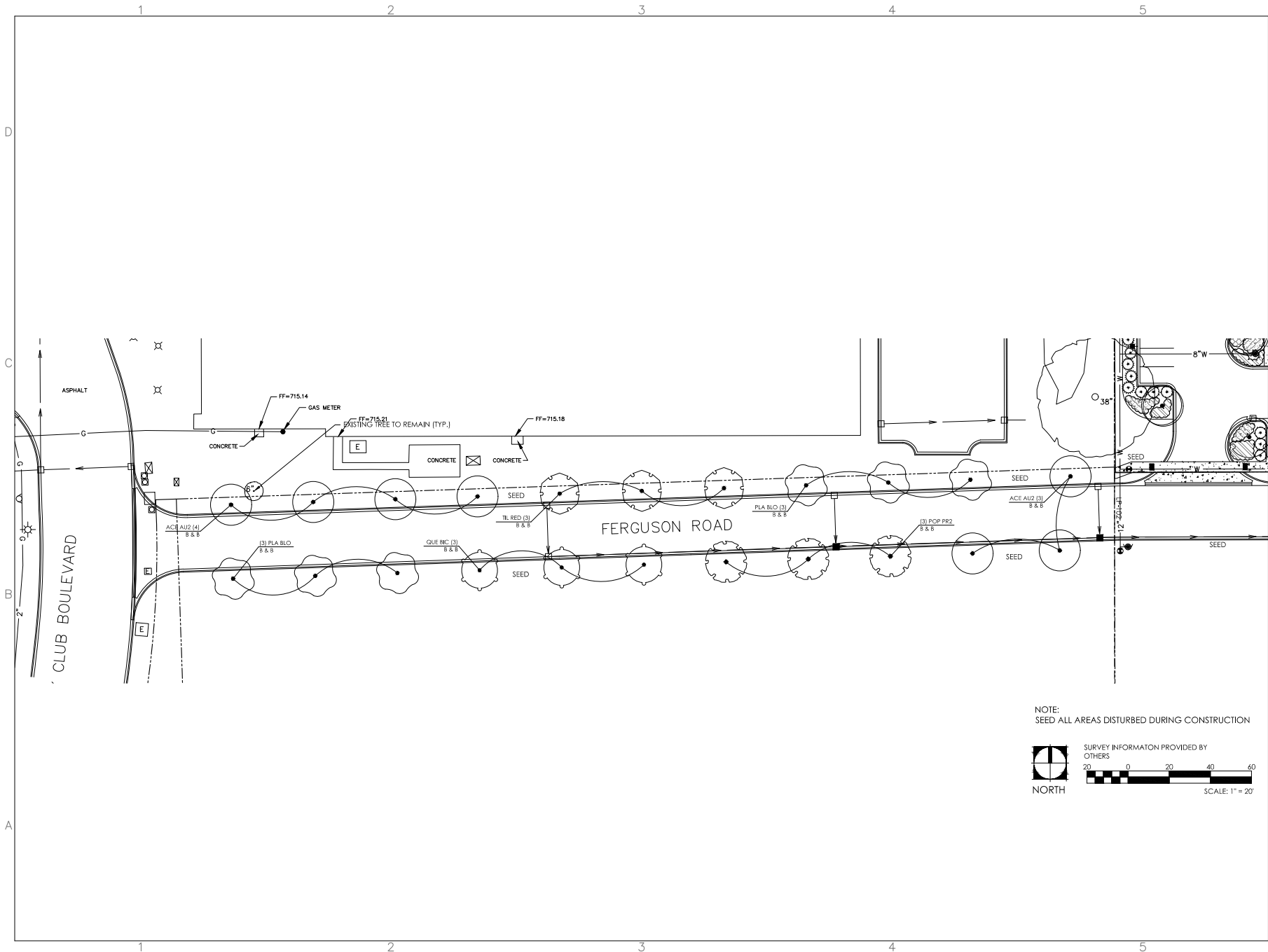


EXHIBIT C



TRU BY HILTON  
1809 WEST DIEHL ROAD  
NAPERVILLE, IL



1280 Iroquois Avenue  
Suite 110  
Naperville, Illinois 60563  
Telephone: (630) 428-3134  
Fax: (630) 428-3159  
www.design-perspectives.net

REV.	COMMENT	DATE
1	RESUBMITAL	7/31/19

SEAL:

NOTE:  
SEED ALL AREAS DISTURBED DURING CONSTRUCTION

NORTH

SURVEY INFORMATION PROVIDED BY OTHERS

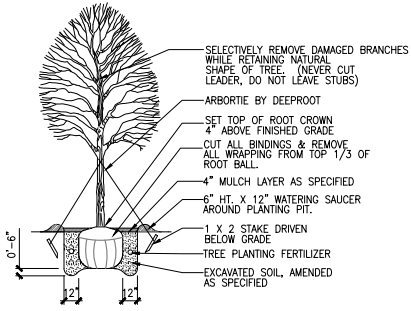
SCALE: 1" = 20'

DATE: 6/5/2019  
JOB NO.: 19-328T  
DRAWN BY: CE  
CHECKED BY: TS

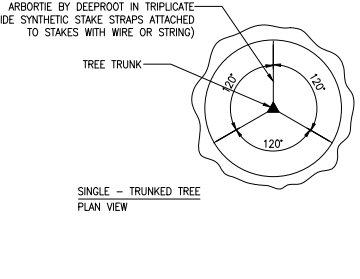
DRAWING TITLE:  
WEST  
LANDSCAPE PLAN  
SHEET NO.:

LP-103  
© DESIGN PERSPECTIVES, INC. ALL RIGHTS RESERVED

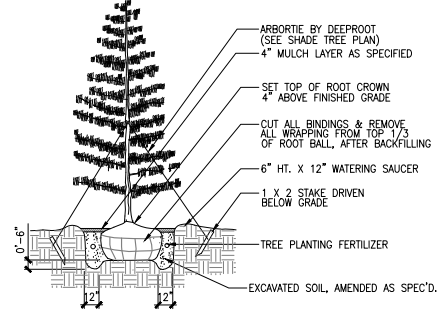
EXHIBIT C



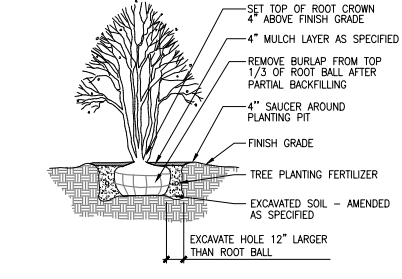
SHADE TREE PLANTING  
SCALE: 1/4"=1'-0"  
DT-tree-4-shr-gn



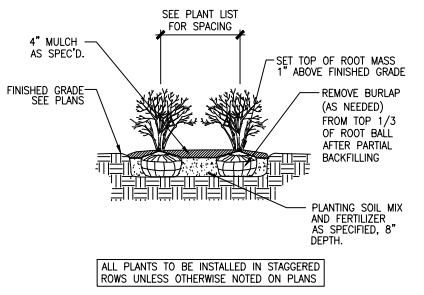
TREE GUYING DETAIL - SHADE TREE  
SCALE: 1/4"=1'-0"  
DT-tree-4-shr-gn-plan



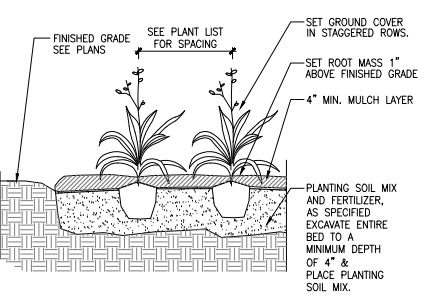
EVERGREEN TREE PLANTING  
SCALE: 1/4"=1'-0"  
DT-evergreen-gn



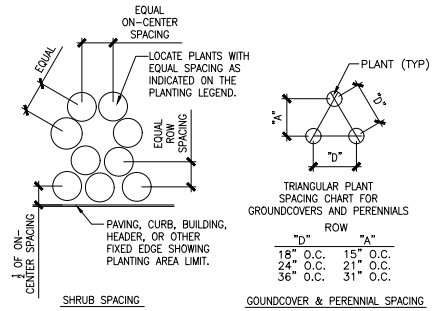
ORNAMENTAL TREE PLANTING  
SCALE: 1/4"=1'-0"  
DT-ornamentaltree-gn



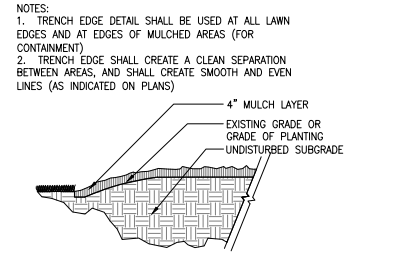
SHRUB PLANTING DETAIL  
SCALE: 1/2"=1'-0"  
DT-shrub-gn



GROUNDCOVER PLANTING  
SCALE: 1"-1'-0"  
DT-groundcover-gn



PLANT SPACING DETAIL  
SCALE: 1/2"=1'-0"  
DT-plantspc-gn



TRENCH EDGE DETAIL  
SCALE: 1"-1'-0"  
DT-tb-trench-gn

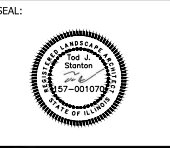
1. THE LANDSCAPE CONTRACTOR SHALL BE RESPONSIBLE FOR MAKING HIMSELF FAMILIAR WITH ALL UNDERGROUND UTILITIES AND STRUCTURES. SEE CONSTRUCTION NOTES.
2. DO NOT WILLFULLY PROCEED WITH PLANTINGS AS DESIGNED WHEN IT IS OBVIOUS THAT OBSTRUCTIONS AND/OR GRADE DIFFERENCES EXIST THAT MAY NOT HAVE BEEN KNOWN DURING THE DESIGN PROCESS. SUCH CONDITIONS SHALL BE IMMEDIATELY BROUGHT TO THE ATTENTION OF THE PROJECT MANAGER. THE LANDSCAPE CONTRACTOR WILL BE HELD RESPONSIBLE FOR ANY NECESSARY REVISIONS AND COSTS DUE TO FAILURE TO GIVE SUCH NOTIFICATION.
3. THE LANDSCAPE CONTRACTOR SHALL BE RESPONSIBLE FOR ANY COORDINATION WITH SUBCONTRACTORS AND/OR SUPPLIERS AS REQUIRED TO ACCOMPLISH PLANTING OPERATIONS.
4. THE LANDSCAPE CONTRACTOR IS TO RECEIVE THE SITE AT +/- 1/10TH OF AN INCH. THE LANDSCAPE CONTRACTOR SHALL OBTAIN A LETTER OF GRADE FROM THE GENERAL CONTRACTOR PRIOR TO BEGINNING WORK.
5. REFER TO SPECIFICATIONS FOR PLANTING REQUIREMENTS, MATERIALS, AND EXECUTION.
6. ALL TREES SHALL BE TAGGED BY THE PROJECT MANAGER AT A NURSERY SELECTED BY THE LANDSCAPE CONTRACTOR OR AT THE DISCRETION OF THE PROJECT MANAGER.

7. FINAL LOCATION OF ALL PLANT MATERIAL SHALL BE SUBJECT TO APPROVAL OF THE PROJECT MANAGER PRIOR TO DIGGING ANY HOLES. THE LANDSCAPE CONTRACTOR IS RESPONSIBLE FOR PROVIDING PROJECT MANAGER ADEQUATE ADVANCE NOTICE FOR ON-SITE APPROVALS. THE LANDSCAPE CONTRACTOR IS TO FOLLOWING BEFORE BEGINNING INSTALLING PLANTINGS.
- SHRUBS - LAY OUT THE ACTUAL CONTAINERS ON-SITE BEFORE DIGGING HOLES.
- TREES - STAKE THE LOCATIONS BEFORE DIGGING HOLES. ANY TREE PLANTED WITHOUT ITS FINAL LOCATION APPROVED BY THE PROJECT MANAGER MAY BE REQUESTED TO BE RELOCATED AT THE SOLE EXPENSE OF THE LANDSCAPE CONTRACTOR.
8. THE LANDSCAPE CONTRACTOR SHALL NOTIFY THE PROJECT MANAGER AT LEAST 48 HOURS IN ADVANCE PRIOR TO COMMENCEMENT OF WORK TO COORDINATE PROJECT OBSERVATION SCHEDULES.
9. IF CONFLICTS ARISE BETWEEN THE ACTUAL SIZE OF AREAS ON THE SITE AND THE DRAWINGS, CONTACT THE PROJECT MANAGER FOR RESOLUTION.
10. IT IS THE LANDSCAPE CONTRACTOR'S RESPONSIBILITY TO FURNISH PLANTS FREE OF PESTS AND/OR DISEASES. PRE-SELECTED OR "PROJECT MANAGER TAGGED" PLANT MATERIAL MUST BE INSPECTED BY THE LANDSCAPE CONTRACTOR AND CERTIFIED PEST AND DISEASE FREE. IT IS THE LANDSCAPE CONTRACTOR'S OBLIGATION TO WARRANTY ALL PLANT MATERIAL PER THE SPECIFICATIONS.

11. GROUNDCOVERS AND SHRUBS ARE TO BE TRIANGULARLY SPACED UNLESS INDICATED ON THE PLANS.
12. ALL TREES WITHIN A SPECIES SHALL HAVE MATCHING FORM, UNLESS OTHERWISE NOTED.
13. ALL TREES, SHRUB AND GROUNDCOVER AREAS (EXCLUDING TURF AND SLOPE AREAS) ARE TO BE MULCHED PER DETAILS.
14. ALL MULCH TO BE SHREDDED HARDWOOD MULCH MINIMUM 4" THICK.
15. TREES SHALL BE SET BACK A MINIMUM OF TEN FEET (10') HORIZONTALLY FROM UTILITY STRUCTURES, INCLUDING, BUT NOT LIMITED TO, MANHOLES, VALVE VAULTS, VALVE BOXES, FIRE HYDRANTS, TRANSFORMERS AND SWITCH CANS. TREES SHALL BE SET BACK A MINIMUM OF FIVE (5') HORIZONTALLY FROM SANITARY SEWER AND WATER SERVICES. CONTRACTOR TO MAKE NECESSARY ADJUSTMENTS UNDER THE APPROVAL OF OWNER. REFER TO CIVIL DRAWINGS PREPARED BY OTHERS.
16. PLANTING RESTRICTIONS: PLANT DURING ONE OF THE FOLLOWING PERIODS. COORDINATE PLANTING PERIODS WITH MAINTENANCE PERIODS TO PROVIDE REQUIRED MAINTENANCE FROM DATE OF SUBSTANTIAL COMPLETION.
  1. SPRING PLANTING: 4/1 - 6/15
  2. FALL PLANTING: 9/1 - 11/1

PLANTING NOTES  
SCALE: NTS  
DT-plantnote-gn

REV.	COMMENT	DATE
1	RESUBMITTAL	7/31/19



DATE: 6/5/2019  
JOB NO.: 119-328T  
DRAWN BY: CE  
CHECKED BY: TS

DRAWING TITLE:  
LANDSCAPE  
DETAILS  
SHEET NO.:

LP-500