



Preliminary and Final Plat

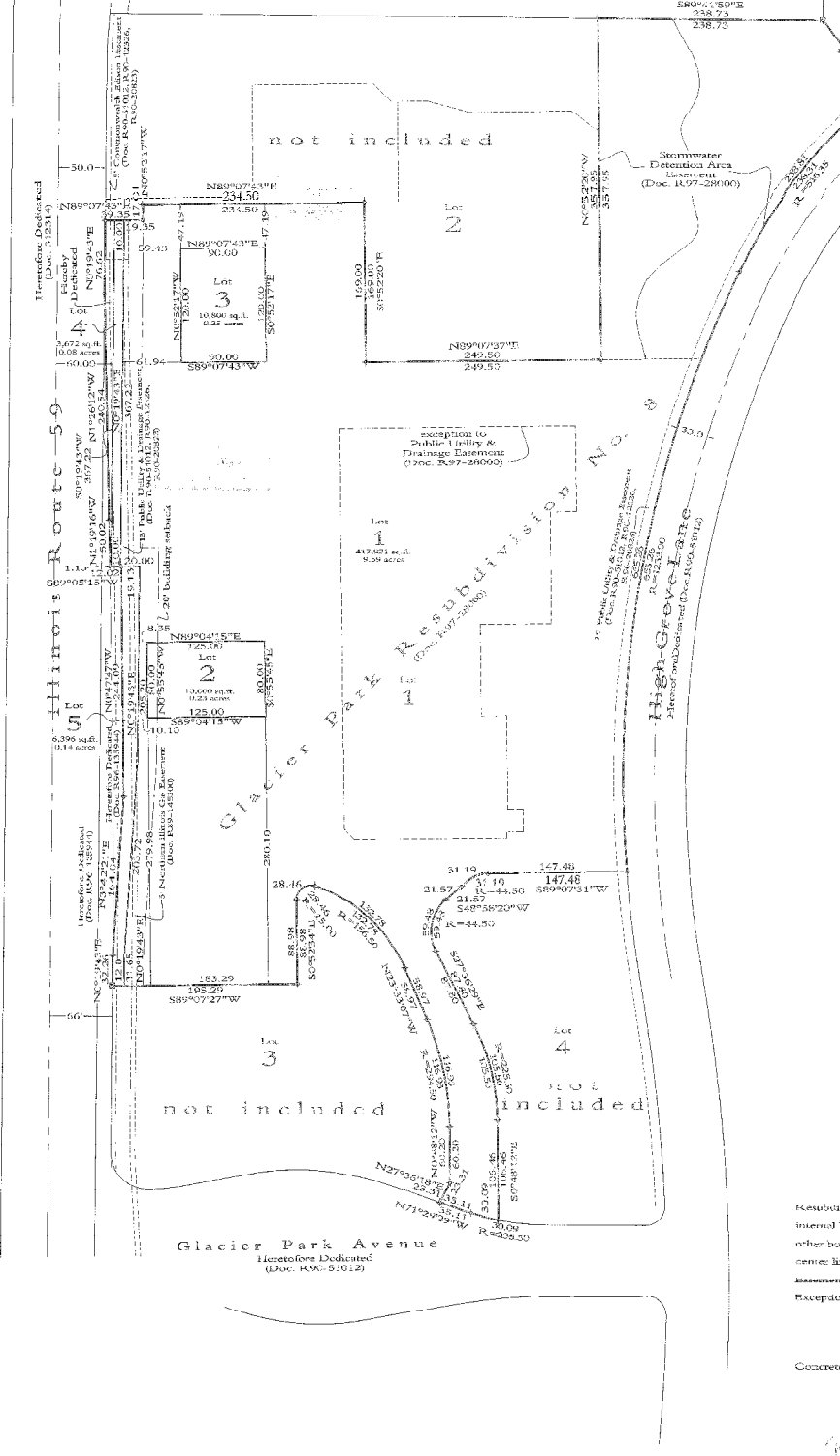
Glacier Park Resubdivision No. 9

Being a resubdivision of Lot 1 of Glacier Park Resubdivision No. 8 in Section 15, Township 38 North, Range 9 East of the Third Principal Meridian in DuPage County, Illinois.



463,605 sq.ft.
10.64 acres

Unsubdivided Lands
(Doc. # 170-28412)



Notes:

- 3/4" iron pipes at all corners except as noted.
- Lots 3 and 4 as platted are reserved for conveyance to the Illinois Department of Transportation for use as public right-of-way.
- Vehicle access to Illinois Route 59 shall be allowed only via one right-in-right-out driveway at a location covered within the northerly 50 feet of Lot 4 as platted herein.
- The platted lands are subject to the terms and conditions contained in Document R 97-26031, which includes provisions for a "blanket" utility easement.

Legend

resubdivision boundary	—
internal boundary	—
other boundary	—
center line	—
Easements	—
Exception to Easement	—

Concrete monument

Plat of Resubdivision

Prepared for
NAKRE High Grove LLC
170 North American Road, Suite 260
Schaumburg, IL 60193
847.382.4771

Craig R. Krasche & Associates
Civil Engineers, P.C.
14 North Branch Street - Geneva, Illinois 60134 - Phone: (630) 401-2222, Fax: (630) 401-2222

Drawn	3-8-07	Sheet	1
Checked	6-06-07	of	1
Date	6-06-07	of	2