



**LOCATION MAP**

**BENCHMARKS/CONTROL POINTS**

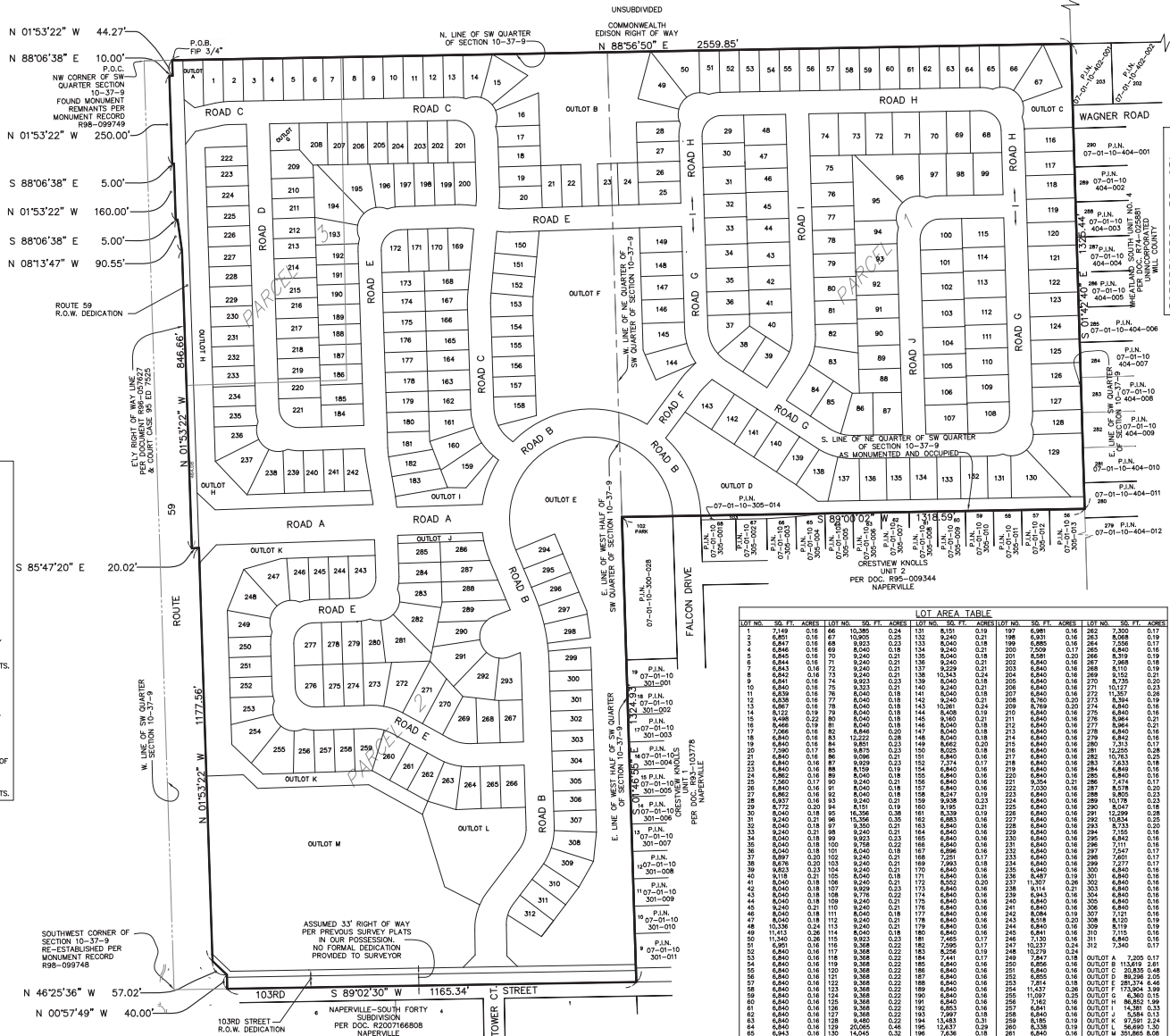
- ELEVATION REFERENCE MARKS
- R.M. NAPERVILLE SURVEY MON. #1503. BERNSTEIN 30 TOP SECURITY MONUMENT. CONSISTING OF A 9/16" DIA. STAINLESS STEEL DATUM POINT ON THREADED 9/16" X 4" LONG ROD TOTALING 18 1/2" IN LENGTH WITH GREASED TOP SECURITY SLEEVE ENCLOSED IN SAND AND 6" PVC PIPE WITH BMAC 6 ALUMINUM ACCESS COVER. ELEVATION=670.06 (NAVD 88)
- R.M. NAPERVILLE SURVEY MON. #1002. BERNSTEIN 30 TOP SECURITY MONUMENT. CONSISTING OF A 9/16" DIA. STAINLESS STEEL DATUM POINT ON THREADED 9/16" X 4" LONG ROD TOTALING 124 1/2" IN LENGTH WITH GREASED TOP SECURITY SLEEVE ENCLOSED IN SAND AND 6" PVC PIPE WITH BMAC 6 ALUMINUM ACCESS COVER. ELEVATION=667.49 (NAVD 88)
- (HELD ABOVE BENCHMARKS AS THE BASIS OF VERTICAL DATUM FOR PROJECT)
- CP 102 - CROSS CUT IN TOP OF CURB ADJACENT TO FIRE HYDRANT AT END OF FALCON DRIVE ON WEST SIDE OF ROAD. ELEV. = 664.395 NAVD 88
- CP 113 - CUT CROSS IN CENTERLINE HEADWALL OF TRIPLE 21" RCP AT THE NORTHEAST CORNER OF ROUTE 59 & 103RD STREET. ELEV. = 669.19 NAVD88
- CP 104 - CUT CROSS IN CENTERLINE OF THE END OF THE CONCRETE WALK AT SOUTHWEST CORNER OF SITE. ELEV. = 668.25 NAVD88

- NOTES**
- ADDITIONAL P.U. & D.E. EASEMENTS MAY BE REQUIRED ON FINAL PLATS BASED ON UTILITY SIZE AND LOCATIONS FROM FINAL ENGINEERING.
  - DIMENSIONS SHOWN ALONG CURVED LINES ARE ARC DISTANCES.
  - ALL RIGHT-OF-WAYS ARE TO BE PUBLIC DEDICATIONS.
  - ALL STREETS, UTILITY PIPES AND MAINS SHALL BE PUBLICLY OWNED AND MAINTAINED.
  - ALL EASEMENTS DEPICTED ON THIS PLAT WILL BE GRANTED ON THE FINAL SUBDIVISION PLATS (UNLESS OTHERWISE NOTED).
  - ALL EASEMENTS ON THE PLAT MAP ARE FOR PUBLIC UTILITIES AND DRAINAGE PURPOSES (UNLESS OTHERWISE NOTED).
  - STORMWATER MANAGEMENT EASEMENTS WILL BE GRANTED ON THE FINAL SUBDIVISION PLATS (UNLESS OTHERWISE NOTED).
  - STORMWATER STORAGE VOLUMES TO BE PROVIDED AND THE DESIGN OF STORMWATER MANAGEMENT FACILITIES, SHALL BE IN ACCORDANCE WITH CITY OF NAPERVILLE AND WILL COUNTY REQUIREMENTS.
  - EASEMENTS TO BE PROVIDED PER CITY AND UTILITY COMPANY REQUIREMENTS.
  - FOR PROPOSED CONTOURS, GRADES, UTILITIES, STREETS AND SIDEWALKS REFER TO THE PRELIMINARY ENGINEERING DRAWINGS FOR THIS DEVELOPMENT.
  - ALL REQUIRED CERTIFICATES AND STATEMENTS WILL BE PROVIDED ON FINAL PLAT.
  - ALL REQUIRED BEPACTS ON THIS PLAT WILL BE GRANTED ON THE FINAL SUBDIVISION PLATS (UNLESS OTHERWISE NOTED).
  - THE MEASURED BERNSTON SHOWN HEREON ARE BASED ON THE WEST LINE OF THE SW QUARTER OF SECTION 10-37-9 BEING N 01°51'11" W. MEASURED BETWEEN 2 MONUMENTS AS ESTABLISHED BY RECORD DOCUMENTS REFERENCED HEREON. MEASUREMENTS WERE DERIVED FROM OBSERVATIONS UTILIZING THE CITY OF NAPERVILLE SURVEY CONTROL NETWORK MONUMENTS.

- LINE LEGEND**
- SUBDIVISION BOUNDARY LINE (Heavy Solid Line)
  - LOT LINE/PROPERTY LINE (Solid Line)
  - EXISTING CORPORATE LIMITS OF THE CITY OF NAPERVILLE (Heavy Dashed Line)
  - BUILDING LINE (Long Dashed Lines)
  - EASEMENT LINE/LIMITS OF EASEMENT (Short Dashed Lines)
  - CENTERLINE (Single Dashed Lines)
  - QUARTER SECTION LINE (Double Dashed Lines)
  - SECTION LINE (Thin Solid Lines)
  - APPROX. SCALED LIMITS OF ZONE A AS SHOWN ON WILL COUNTY FIRM.

**PRELIMINARY PLAT OF SUBDIVISION FOR WAGNER FARMS**

PART OF THE SOUTHWEST QUARTER OF SECTION 10, TOWNSHIP 37 NORTH, RANGE 9 EAST OF THE THIRD PRINCIPAL MERIDIAN, IN WILL COUNTY, ILLINOIS.



**PARCEL INDEX NUMBER**

07-01-10-300-002  
07-01-10-300-003  
07-01-10-300-029  
NAPERVILLE, ILLINOIS

**SITE DATA**

A. TOTAL AREA 114.28 AC. ± 100%

B. PROPOSED ZONING 1.9 AC. ± R2

C. EXTERNAL R.O.W. (103' S STREET) 2.19 AC. ± 1.92%

D. INTERNAL R.O.W. (ROUTE 59) 0.83 AC. ±

E. COMMON OPEN SPACE (STORMWATER MANAGEMENT/OPEN SPACE) 24.90 AC. ± 21.04%

F. LANDSCAPE BUFFERS 8.08 AC. ± 7.07%

G. NET RESIDENTIAL (DETACHED) 58.06 AC. ± 50.81%

H. NO. OF LOTS (DETACHED) 200 PLOTS ± 312

I. MINIMUM LOT SIZE 6,838 S.F. ±

J. MAXIMUM LOT SIZE 20,065 S.F. ±

K. AVERAGE LOT SIZE 8,146 S.F. ±

L. FRONT YARD SETBACK 25 FT. ±

M. CORNER SIDE YARD SETBACK 15 FT. ±

N. INTERIOR SIDE YARD SETBACK 6' MIN. w/COMBINED 14' TOTAL ±

O. REAR YARD SETBACK 25 FT. ±

P. GROSS MODIFIED DENSITY 2.78 DU/AC.

**ABBREVIATIONS**

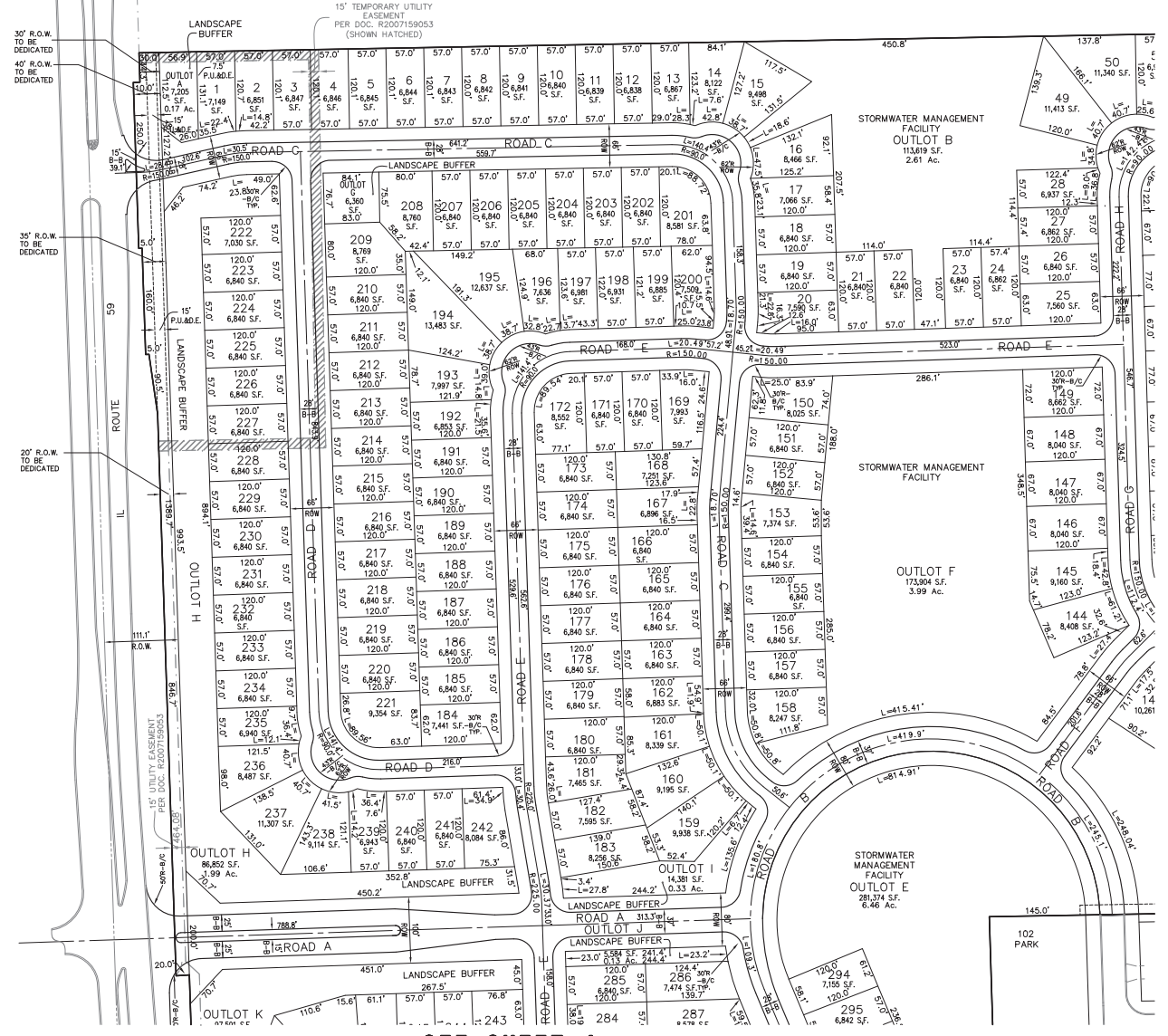
N. - NORTH  
S. - SOUTH  
E. - EAST  
W. - WEST  
NW. - NORTHWEST  
DOC. - DOCUMENT  
F.I.P.R. - FOUND IRON PIPE  
MON. - MONUMENT  
G. - ON LINE  
REC. - RECORD  
ARC LENGTH  
R.O.W. - RIGHT OF WAY  
AC. - ACRE  
S.F. - SQUARE FEET  
B.S.L. - BUILDING SETBACK LINE  
DU/AC - DWELLING UNITS PER ACRE  
B/C - BACK OF CURB  
B-B - BACK TO BACK

P.U. & D.E. - INDICATES PUBLIC UTILITIES AND DRAINAGE EASEMENT

**LOT AREA TABLE**

LOT NO.	SO. FT.	ADRS.	LOT NO.	SO. FT.	ADRS.	LOT NO.	SO. FT.	ADRS.	LOT NO.	SO. FT.	ADRS.
1	31.69	0.16	60	10.385	0.54	101	8.51	0.19	197	6.91	0.16
2	6.97	0.16	61	10.905	0.23	102	9.240	0.21	198	8.321	0.19
3	6.966	0.16	62	8.933	0.23	103	8.940	0.18	199	8.855	0.16
4	6.966	0.16	63	8.040	0.18	104	9.240	0.21	200	7.509	0.17
5	6.966	0.16	64	9.122	0.19	105	8.940	0.18	201	6.801	0.16
6	6.966	0.16	65	9.240	0.21	106	8.940	0.18	202	6.801	0.16
7	6.966	0.16	66	9.240	0.21	107	9.239	0.21	203	6.840	0.16
8	6.966	0.16	67	9.240	0.21	108	9.240	0.21	204	6.840	0.16
9	6.941	0.16	68	9.923	0.23	109	8.940	0.18	205	8.940	0.18
10	6.940	0.16	69	7.553	0.18	110	8.940	0.18	206	8.940	0.18
11	6.839	0.16	70	8.040	0.18	111	8.040	0.18	207	11.307	0.23
12	6.838	0.16	71	8.040	0.18	112	8.940	0.18	208	7.650	0.20
13	6.867	0.16	72	8.040	0.18	113	10.081	0.24	209	6.769	0.20
14	6.867	0.16	73	8.040	0.18	114	8.940	0.18	210	6.840	0.16
15	6.867	0.16	74	8.040	0.18	115	8.940	0.18	211	6.840	0.16
16	6.867	0.16	75	8.040	0.18	116	8.940	0.18	212	6.840	0.16
17	6.867	0.16	76	8.040	0.18	117	8.940	0.18	213	6.840	0.16
18	6.867	0.16	77	8.040	0.18	118	8.940	0.18	214	6.840	0.16
19	6.867	0.16	78	8.040	0.18	119	8.940	0.18	215	6.840	0.16
20	6.867	0.16	79	8.040	0.18	120	8.940	0.18	216	6.840	0.16
21	6.867	0.16	80	8.040	0.18	121	8.940	0.18	217	6.840	0.16
22	6.867	0.16	81	8.040	0.18	122	8.940	0.18	218	6.840	0.16
23	6.867	0.16	82	8.040	0.18	123	8.940	0.18	219	6.840	0.16
24	6.867	0.16	83	8.040	0.18	124	8.940	0.18	220	6.840	0.16
25	6.867	0.16	84	8.040	0.18	125	8.940	0.18	221	6.840	0.16
26	6.867	0.16	85	8.040	0.18	126	8.940	0.18	222	6.840	0.16
27	6.867	0.16	86	8.040	0.18	127	8.940	0.18	223	6.840	0.16
28	6.867	0.16	87	8.040	0.18	128	8.940	0.18	224	6.840	0.16
29	6.867	0.16	88	8.040	0.18	129	8.940	0.18	225	6.840	0.16
30	6.867	0.16	89	8.040	0.18	130	8.940	0.18	226	6.840	0.16
31	6.867	0.16	90	8.040	0.18	131	8.940	0.18	227	6.840	0.16
32	6.867	0.16	91	8.040	0.18	132	8.940	0.18	228	6.840	0.16
33	6.867	0.16	92	8.040	0.18	133	8.940	0.18	229	6.840	0.16
34	6.867	0.16	93	8.040	0.18	134	8.940	0.18	230	6.840	0.16
35	6.867	0.16	94	8.040	0.18	135	8.940	0.18	231	6.840	0.16
36	6.867	0.16	95	8.040	0.18	136	8.940	0.18	232	6.840	0.16
37	6.867	0.16	96	8.040	0.18	137	8.940	0.18	233	6.840	0.16
38	6.867	0.16	97	8.040	0.18	138	8.940	0.18	234	6.840	0.16
39	6.867	0.16	98	8.040	0.18	139	8.940	0.18	235	6.840	0.16
40	6.867	0.16	99	8.040	0.18	140	8.940	0.18	236	6.840	0.16
41	6.867	0.16	100	8.040	0.18	141	8.940	0.18	237	6.840	0.16
42	6.867	0.16	101	8.040	0.18	142	8.940	0.18	238	6.840	0.16
43	6.867	0.16	102	8.040	0.18	143	8.940	0.18	239	6.840	0.16
44	6.867	0.16	103	8.040	0.18	144	8.940	0.18	240	6.840	0.16
45	6.867	0.16	104	8.040	0.18	145	8.940	0.18	241	6.840	0.16
46	6.867	0.16	105	8.040	0.18	146	8.940	0.18	242	6.840	0.16
47	6.867	0.16	106	8.040	0.18	147	8.940	0.18	243	6.840	0.16
48	6.867	0.16	107	8.040	0.18	148	8.940	0.18	244	6.840	0.16
49	6.867	0.16	108	8.040	0.18	149	8.940	0.18	245	6.840	0.16
50	6.867	0.16	109	8.040	0.18	150	8.940	0.18	246	6.840	0.16
51	6.867	0.16	110	8.040	0.18	151	8.940	0.18	247	6.840	0.16
52	6.867	0.16	111	8.040	0.18	152	8.940	0.18	248	6.840	0.16
53	6.867	0.16	112	8.040	0.18	153	8.940	0.18	249	6.840	0.16
54	6.867	0.16	113	8.040	0.18	154	8.940	0.18	250	6.840	0.16
55	6.867	0.16	114	8.040	0.18	155	8.940	0.18	251	6.840	0.16
56	6.867	0.16	115	8.040	0.18	156	8.940	0.18	252	6.840	0.16
57	6.867	0.16	116	8.040	0.18	157	8.940	0.18	253	6.840	0.16
58	6.867	0.16	117	8.040	0.18	158	8.940	0.18	254	6.840	0.16
59	6.867	0.16	118	8.040	0.18	159	8.940	0.18	255	6.840	0.16
60	6.867	0.16	119	8.040	0.18	160	8.940	0.18	256	6.840	0.16
61	6.867	0.16	120	8.040	0.18	161	8.940	0.18	257	6.840	0.16
62	6.867	0.16	121	8.040	0.18	162	8.940	0.18	258	6.840	0.16
63	6.867	0.16	122	8.040	0.18	163	8.940	0.18	259	6.840	0.16
64	6.867	0.16	123	8.040	0.18	164	8.940	0.18	260	6.840	0.16
65	6.867	0.16	124	8.040	0.18	165	8.940	0.18	261	6.840	0.16
66	6.867	0.16	125	8.040	0.18	166	8.940	0.18	262	6.840	0.16
67	6.867	0.16	126	8.040	0.18	167	8.940	0.18	263	6.840	0.16
68	6.867	0.16	127	8.040	0.18	168	8.940	0.18	264	6.840	0.16
69	6.867	0.16	128	8.040	0.18	169	8.940	0.18	265	6.840	0.16
70	6.867	0.16	129	8.040	0.18	170	8.940	0.18	266	6.840	0.16
71	6.867	0.16	130	8.040	0.18	171	8.940	0.18	267	6.840	0.16
72	6.867	0.16	131	8.040	0.18	172	8.940	0.18	268	6.840	0.16
73	6.867	0.16	132	8.040	0.18	173	8.940	0.18	269	6.840	0.16
74	6.867	0.16	133	8.040	0.18	174	8.940	0.18	270	6.840	0.16
75	6.867	0.16	134	8.040	0.18	175	8.940	0.18	271	6.840	0.16
76	6.867	0.16	135	8.040	0.18	176	8.940	0.18	272	6.840	0.16
77	6.867	0.16	136	8.040	0.18	177	8.940	0.18	273	6.840	0.16
78	6.867	0.16	137	8.040	0.18	178	8.940	0.18	274	6.840	0.16
79	6.867	0.16	138	8.040	0.18	179	8.940	0.18	275	6.840	0.16
80	6.867	0.16	139	8.040	0.18	180	8.940	0.18	276	6.840	0.16
81	6.867	0.16	140	8.040	0.18	181	8.940	0.18	277	6.840	0.16
82	6.867	0.16	141	8.040	0.18	182	8.940	0.18	278	6.840	0.16
83	6.867	0.16	142	8.040	0.18	183	8.940	0.18	279	6.840	0.16
84	6.867	0.16	143	8.040	0.18	184	8.940	0.18	280	6.840	0.16
85	6.867	0.16	144	8.040	0.18	185	8.940	0.18	281	6.840	0.16
86	6.867	0.16	145	8.040	0.18	186	8.940	0.18	282	6.840	0.16
87	6.867	0.16	146	8.040	0.18	187	8.940	0.18	283	6.840	0.16
88	6.867	0.16	147	8.040	0.18	188	8.940	0.18	284	6.840	0.16
89	6.867	0.16	148	8.040	0.18	1					

UNSUBDIVIDED  
COMMONWEALTH EDISON RIGHT OF  
WAY



SEE SHEET 3

SEE SHEET 4

**PARCEL ONE:**  
THE NORTH-EAST QUARTER OF THE SOUTHWEST QUARTER OF SECTION 10, WHEATLAND TOWNSHIP, WILL COUNTY, ILLINOIS.

**PARCEL TWO:**  
THE WEST HALF OF THE SOUTHWEST QUARTER OF SECTION 10, WHEATLAND TOWNSHIP, WILL COUNTY, ILLINOIS;

EXCEPT THAT PART TAKEN BY THE ILLINOIS DEPARTMENT OF TRANSPORTATION FOR HIGHWAY EXPANSION ALONG ILLINOIS ROUTE 59 IN COURT CASE 95 ED 7525; AND ALSO EXCEPT THAT PART OF THE SOUTHWEST QUARTER OF SECTION 10, TOWNSHIP 37 NORTH, RANGE 9 EAST OF THE THIRD PRINCIPAL MERIDIAN DESCRIBED BY COMMENCING AT THE NORTHWEST CORNER OF THE SOUTHWEST QUARTER OF SAID SOUTHWEST QUARTER AND HEADING THENCE NORTH 88 DEGREES 56 MINUTES 52 SECONDS EAST ALONG THE NORTH LINE OF SAID SOUTHWEST QUARTER, A DISTANCE OF 80.58 FEET TO THE POINT OF BEGINNING; CONTINUING AT THE POINT OF BEGINNING, THENCE NORTH 88 DEGREES 56 MINUTES 52 SECONDS EAST ALONG THE NORTH LINE OF SAID SOUTHWEST QUARTER, A DISTANCE OF 480.00 FEET TO A POINT; THENCE SOUTH 01 DEGREES 03 MINUTES 08 SECONDS WEST, A DISTANCE OF 920.00 FEET TO A POINT; THENCE SOUTH 88 DEGREES 06 MINUTES 54 SECONDS WEST, A DISTANCE OF 456.58 FEET TO A POINT OF THE EASTERLY RIGHT-OF-WAY LINE OF ILLINOIS ROUTE 59 PER DOCUMENT R96-057627; THENCE NORTH 01 DEGREE 53 MINUTES 06 SECONDS WEST, ALONG SAID EASTERLY RIGHT-OF-WAY LINE A DISTANCE OF 392.58 FEET TO A POINT; THENCE NORTH 08 DEGREES 13 MINUTES 31 SECONDS WEST, A DISTANCE OF 90.55 FEET TO A POINT; THENCE SOUTH 88 DEGREES 06 MINUTES 54 SECONDS WEST, A DISTANCE OF 5.00 FEET TO A POINT; THENCE NORTH 01 DEGREE 53 MINUTES 06 SECONDS WEST, A DISTANCE OF 160.00 FEET TO A POINT; THENCE SOUTH 88 DEGREES 06 MINUTES 54 SECONDS WEST, A DISTANCE OF 5.00 FEET TO A POINT; THENCE NORTH 01 DEGREE 53 MINUTES 06 SECONDS WEST, A DISTANCE OF 250.00 FEET TO A POINT; THENCE NORTH 88 DEGREES 06 MINUTES 54 SECONDS EAST, A DISTANCE OF 10.00 FEET TO A POINT; THENCE NORTH 01 DEGREE 53 MINUTES 06 SECONDS WEST, A DISTANCE OF 44.30 FEET TO THE POINT OF BEGINNING, EXCEPT THAT PART PREVIOUSLY ANNEXED TO THE CITY OF NAPERVILLE.

**PARCEL THREE:**  
THAT PART OF THE SOUTHWEST QUARTER OF SECTION 10, TOWNSHIP 37 NORTH, RANGE 9 EAST OF THE THIRD PRINCIPAL MERIDIAN DESCRIBED BY COMMENCING AT THE NORTHWEST CORNER OF THE SOUTHWEST QUARTER OF SAID SOUTHWEST QUARTER AND HEADING THENCE NORTH 88 DEGREES 56 MINUTES 52 SECONDS EAST ALONG THE NORTH LINE OF SAID SOUTHWEST QUARTER, A DISTANCE OF 80.58 FEET TO THE POINT OF BEGINNING; CONTINUING AT THE POINT OF BEGINNING, THENCE NORTH 88 DEGREES 56 MINUTES 52 SECONDS EAST ALONG THE NORTH LINE OF SAID SOUTHWEST QUARTER, A DISTANCE OF 480.00 FEET TO A POINT; THENCE SOUTH 01 DEGREE 03 MINUTES 08 SECONDS EAST, A DISTANCE OF 920.00 FEET TO A POINT; THENCE SOUTH 88 DEGREES 06 MINUTES 54 SECONDS WEST, A DISTANCE OF 456.58 FEET TO A POINT OF THE EASTERLY RIGHT-OF-WAY LINE OF ILLINOIS ROUTE 59 PER DOCUMENT R96-057627; THENCE NORTH 01 DEGREE 53 MINUTES 06 SECONDS WEST, ALONG SAID EASTERLY RIGHT-OF-WAY LINE A DISTANCE OF 392.58 FEET TO A POINT; THENCE NORTH 08 DEGREES 13 MINUTES 31 SECONDS WEST, A DISTANCE OF 90.55 FEET TO A POINT; THENCE SOUTH 88 DEGREES 06 MINUTES 54 SECONDS WEST, A DISTANCE OF 5.00 FEET TO A POINT; THENCE NORTH 01 DEGREE 53 MINUTES 06 SECONDS WEST, A DISTANCE OF 160.00 FEET TO A POINT; THENCE SOUTH 88 DEGREES 06 MINUTES 54 SECONDS WEST, A DISTANCE OF 5.00 FEET TO A POINT; THENCE NORTH 01 DEGREE 53 MINUTES 06 SECONDS WEST, A DISTANCE OF 250.00 FEET TO A POINT; THENCE NORTH 88 DEGREES 06 MINUTES 54 SECONDS EAST, A DISTANCE OF 10.00 FEET TO A POINT; THENCE NORTH 01 DEGREE 53 MINUTES 06 SECONDS WEST, A DISTANCE OF 44.30 FEET TO THE POINT OF BEGINNING.

PREPARED FOR:  
PULTE HOME COMPANY, LLC  
1900 E. GOLF ROAD, SUITE 300  
SCHAUMBURG, IL 60173  
(847) 230-5400

PREPARED BY:  
**CEMCON, Ltd.**  
Consulting Engineers, Land Surveyors & Planners  
2280 White Oak Circle, Suite 100  
Aurora, Illinois 60502-9675  
PH: 630.862.2100 FAX: 630.862.2199  
E-Mail: cadd@cemcon.com Website: www.cemcon.com

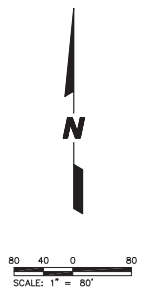
DISC NO.: 402109 FILE NAME: FREQDR  
DRAWN BY: LAL FLD BK. / PG. NO.: ----  
COMPLETION DATE: 07-30-18 JOB NO.: 402.109  
XREF: TOPO PROJECT MANAGER: CRM

PRELIMINARY PLAT OF SUBDIVISION FOR WAGNER FARMS  
CITY OF NAPERVILLE PROJECT NO. 18-1000007  
SHEET 2 OF 4  
Copyright © 2018 Cemcon, Ltd. All rights reserved.

NOT BE CREATED, DULY REPRODUCED OR USED IN ANY MANNER WITHOUT THE WRITTEN PERMISSION OF CEMCON, LTD.

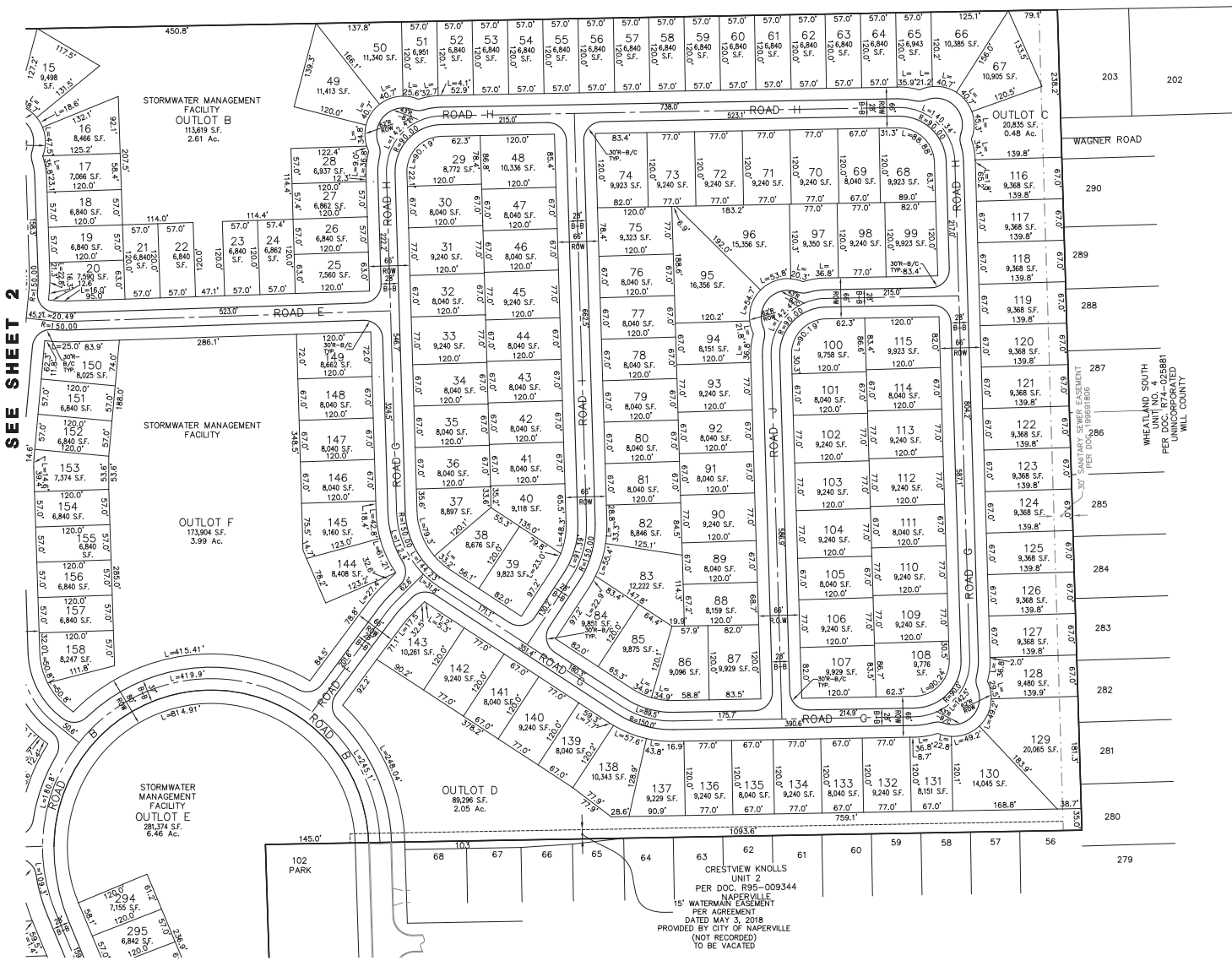
# EXHIBIT B

UNSUBDIVIDED  
COMMONWEALTH EDISON RIGHT OF  
WAY



SEE SHEET 2

NOT FILED: 12/12/2018 BY: EILEE LUNDERS DRAWING DATE: 11/15/2018 DATE PLOTTED: 12/12/2018 PROJECT: PRELIMINARY



PREPARED FOR:  
PULTE HOME COMPANY, LLC  
1900 E. GOLF ROAD, SUITE 300  
CHAUMBURG, IL 60173  
(847) 230-5400

PREPARED BY:  
**CEMCON, Ltd.**  
Consulting Engineers, Land Surveyors & Planners  
2280 White Oak Circle, Suite 100  
Aurora, Illinois 60502-9675  
PH: 630.862.2100 FAX: 630.862.2199  
E-Mail: codd@cemcon.com Website: www.cemcon.com

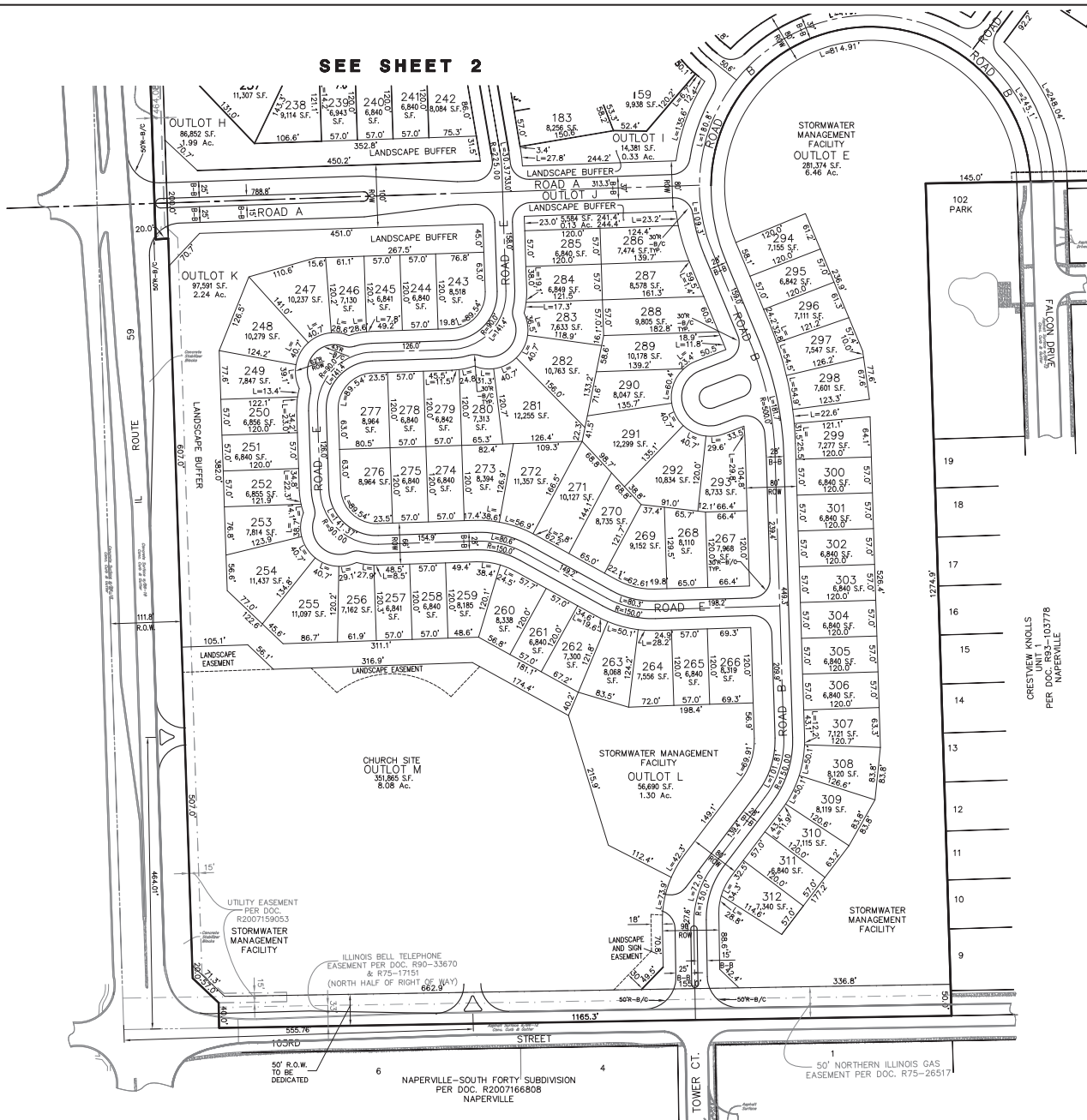
DISC NO.: 402109 FILE NAME: PREOVR  
DRAWN BY: LAL FLD. BK. / PG. NO.: -----  
COMPLETION DATE: 07-30-18 JOB NO.: 402.109  
XREF : TOPO PROJECT MANAGER : CRM

CRESTVIEW KNOLLS  
UNIT 2  
PER DOC. REC-009344  
NAPERVILLE  
15' WATERMAIN EASEMENT  
PER AGREEMENT  
DATED MAY 3, 2018  
PROVIDED BY CITY OF NAPERVILLE  
(NOT RECORDED)  
TO BE VACATED

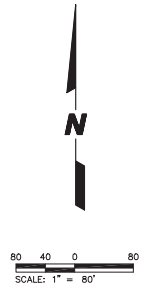
**PRELIMINARY PLAT OF SUBDIVISION FOR WAGNER FARMS  
CITY OF NAPERVILLE PROJECT NO. 18-1000087**

SHEET 3 OF 4  
Copyright © 2018 Cemcon, Ltd. All rights reserved.

# EXHIBIT B



SEE SHEET 2



PREPARED FOR:  
 PULTE HOME COMPANY, LLC  
 1900 E. GOLF ROAD, SUITE 300  
 SCHAUMBURG, IL 60173  
 (847) 230-5400

PREPARED BY:  
**CEMCON, Ltd.**  
 Consulting Engineers, Land Surveyors & Planners  
 2280 White Oak Circle, Suite 100  
 Aurora, Illinois 60502-9875  
 PH: 630.862.2100 FAX: 630.862.2199  
 E-Mail: ccs@cemcon.com Website: www.cemcon.com

DISC NO.: 402109 FILE NAME: PREDRV  
 DRAWN BY: LAL FLD. BK. / FC. NO.:  
 COMPLETION DATE: 07-30-18 JOB NO.: 402.109  
 XREF : TOPO PROJECT MANAGER : CRM

**PRELIMINARY PLAT OF SUBDIVISION FOR WAGNER FARMS**  
**CITY OF NAPERVILLE PROJECT NO. 18-1000087**  
 SHEET 4 OF 4  
 Copyright © 2018 Cemcon, Ltd. All rights reserved.

EXHIBIT B

PLAT FILE CREATED: 12/12/2018 BY: LAL/CEMCON  
 DRAWING DATE: 12/12/2018 BY: LAL/CEMCON  
 DRAWING DATE: 12/12/2018 BY: LAL/CEMCON