

LUXE SKIN

UNIQUE DAYSPA
MAKE UP

**620 N Washington Street
Naperville, IL 60563**

Monument Sign

**OLYMPIC
SIGNS**

1130 N. Garfield
Lombard, IL 60148

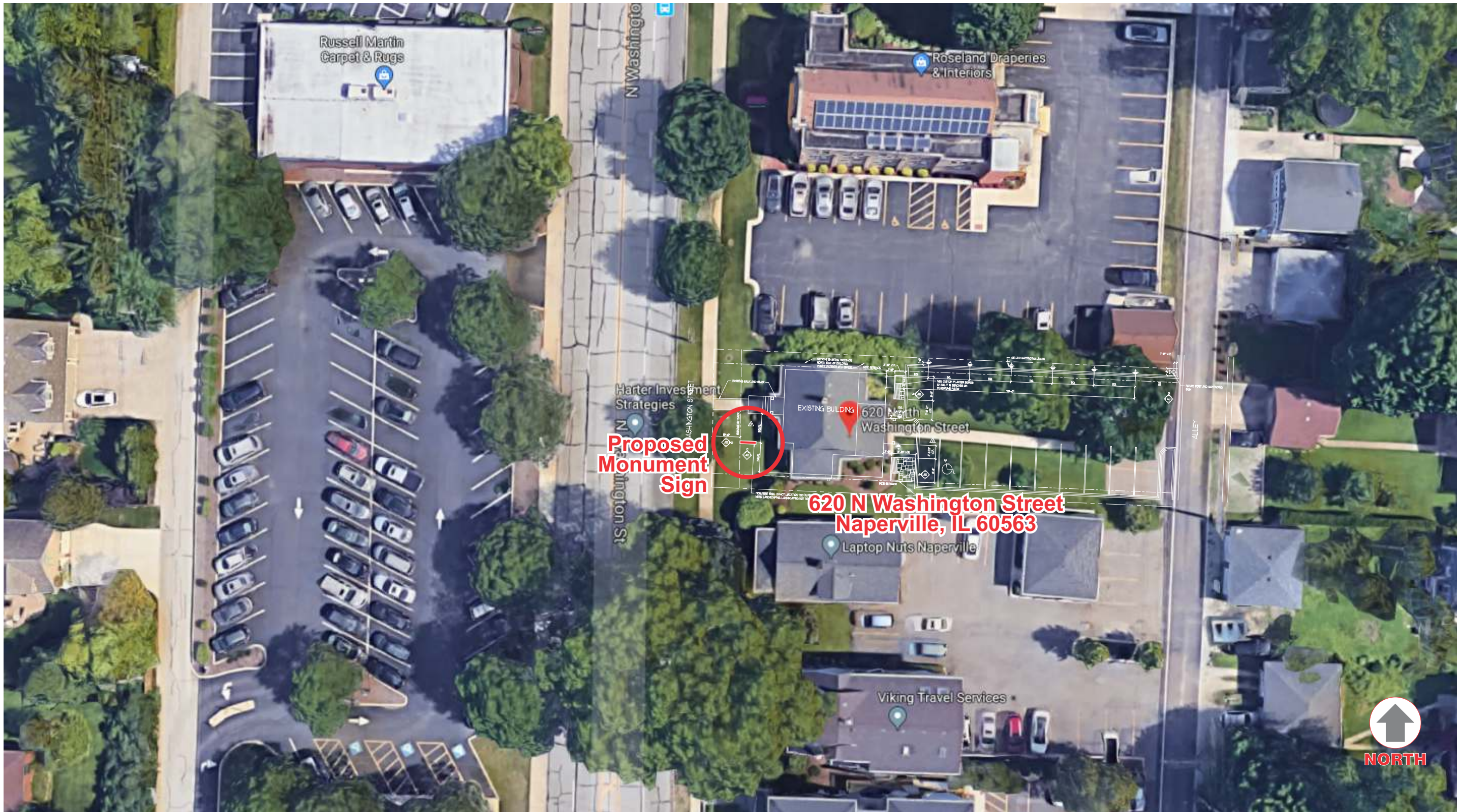
Ph.# 630.424.6100 Fx.# 630.424.6120

WWW.OLYSIGNS.COM

job#: 17-7136

THIS IS AN ORIGINAL, UNPUBLISHED DRAWING SUBMITTED IN CONNECTION WITH A PROJECT WE ARE PLANNING FOR YOU. THIS IS NOT TO BE COPIED, REPRODUCED, EXHIBITED OR SHOWN TO ANYONE OUTSIDE OF YOUR ORGANIZATION WITHOUT THE WRITTEN PERMISSION OF OLYMPIC SIGNS, INC. ARTWORK IS EXCLUSIVE PROPERTY OF OLYMPIC SIGN INC.

● 01-30-18



Site Plan -

**OLYMPIC
SIGNS**

1130 N. Garfield
Lombard, IL 60148

account representative
AL SANTA MARIA

client

LUXE SKIN
UNIQUE DAYSPA
MAKE UP

620 N Washington Street
Naperville, IL 60563

drawn by
PAMELA F

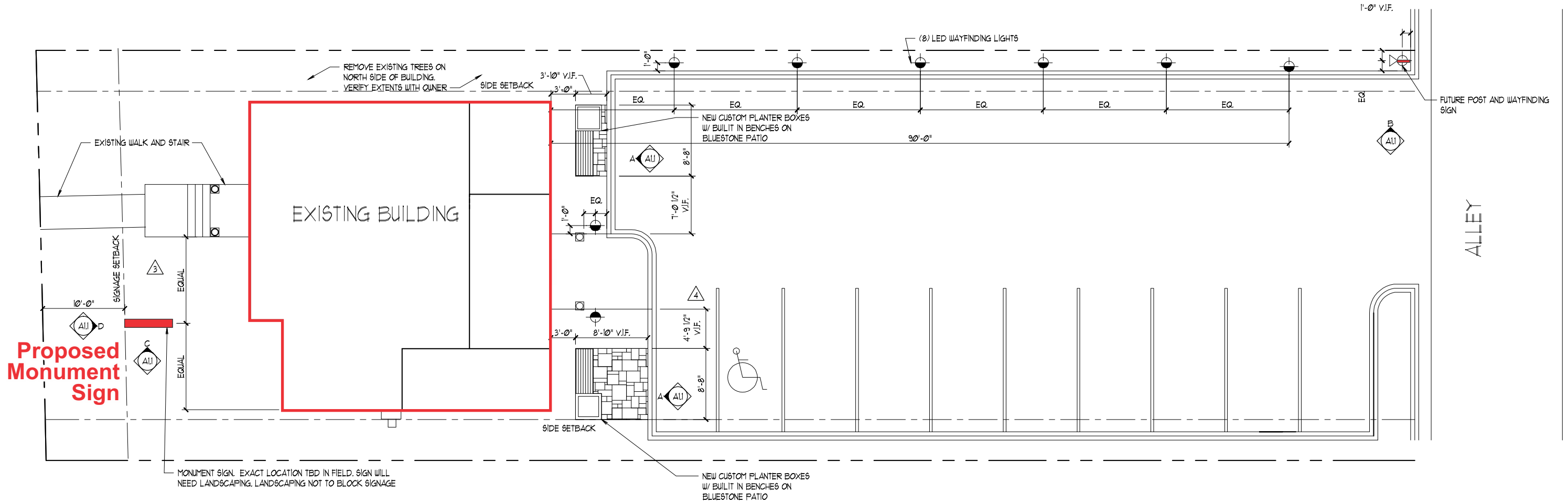
• job#: 17-7136
• 12-04-17
• rev.# 01-30-18

Comments:

THIS IS AN ORIGINAL, UNPUBLISHED DRAWING SUBMITTED IN CONNECTION WITH A PROJECT WE ARE PLANNING FOR YOU. THIS IS NOT TO BE COPIED, REPRODUCED, EXHIBITED OR SHOWN TO ANYONE OUTSIDE OF YOUR ORGANIZATION WITHOUT THE WRITTEN PERMISSION OF OLYMPIC SIGNS, INC. ARTWORK IS EXCLUSIVE PROPERTY OF OLYMPIC SIGN INC.

WWW.OLYSIGNS.COM

WASHINGTON STREET



Site Plan - Architectural

Scale N.T.S.



1130 N. Garfield
Lombard, IL 60148

Ph.# 630.424.6100 Fx.# 630.424.6120 WWW.OLYSIGNS.COM

account representative / client
AL SANTA MARIA

LUXE SKIN
UNIQUE DAYS PA
MAKE UP
620 N Washington Street
Naperville, IL 60563

drawn by
PAMELA F

• job#: 17-7136
• 12-04-17
• rev.# 01-30-18

Comments:

THIS IS AN ORIGINAL, UNPUBLISHED DRAWING SUBMITTED IN CONNECTION WITH A PROJECT WE ARE PLANNING FOR YOU. THIS IS NOT TO BE COPIED, REPRODUCED, EXHIBITED OR SHOWN TO ANYONE OUTSIDE OF YOUR ORGANIZATION WITHOUT THE WRITTEN PERMISSION OF OLYMPIC SIGNS, INC. ARTWORK IS EXCLUSIVE PROPERTY OF OLYMPIC SIGN INC.



Survey Photos of Site -

**OLYMPIC
SIGNS**

account representative / client
AL SANTA MARIA

1130 N. Garfield
Lombard, IL 60148 Ph.# 630.424.6100 Fx.# 630.424.6120

LUXE SKIN
UNIQUE DAYSPA
MAKE UP

620 N Washington Street
Naperville, IL 60563

drawn by /
PAMELA F

job#: 17-7136
12-04-17
rev.# 01-30-18

WWW.OLYSIGNS.COM

Comments:



EXISTING

South Elevation - Before

Existing Square Footage 8.3



PROPOSED

South Elevation - AFTER



620 N Washington Street
Naperville, IL 60563



1130 N. Garfield Lombard, IL 60148 Ph.# 630.424.6100 Fx.# 630.424.6120 WWW.OLYSIGNS.COM

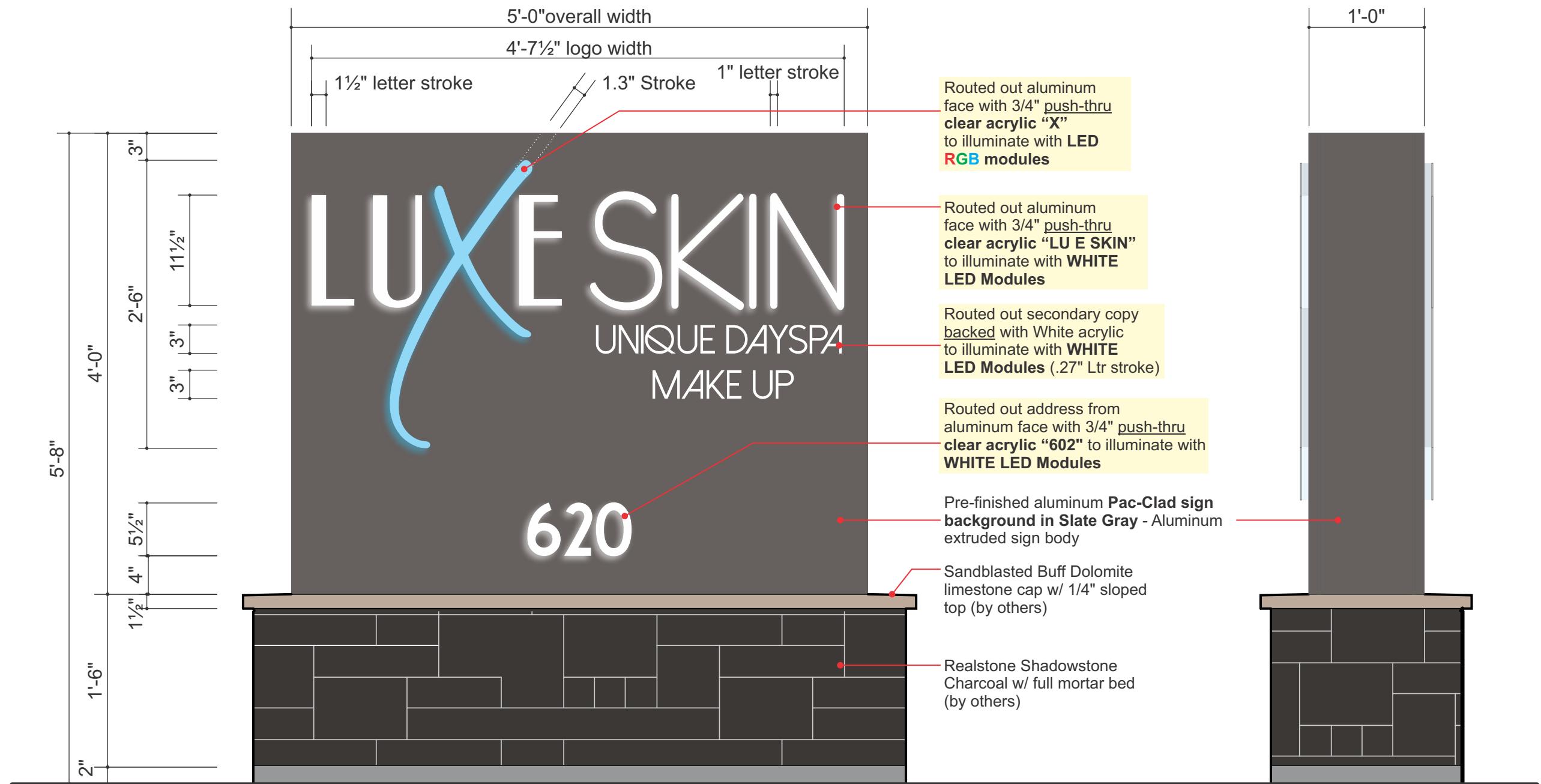
THIS IS AN ORIGINAL, UNPUBLISHED DRAWING SUBMITTED IN CONNECTION WITH A PROJECT WE ARE PLANNING FOR YOU. THIS IS NOT TO BE COPIED, REPRODUCED, EXHIBITED OR SHOWN TO ANYONE OUTSIDE OF YOUR ORGANIZATION WITHOUT THE WRITTEN PERMISSION OF OLYMPIC SIGNS, INC. ARTWORK IS EXCLUSIVE PROPERTY OF OLYMPIC SIGN INC.

account representative / client
AL SANTA MARIA

drawn by
PAMELA F

- job#: 17-7136
- 12-04-17
- rev.# 01-30-18

Comments:



Front View
D/F Illuminated Monument Sign -

Side View

Scale 1" = 1'-0"

Qty: (1) Required

Square Footage: 20.0

Aluminum extrusion sign frame. Pre-finished aluminum Pac-Clad sign background in Slate Gray. "LUXESKIN" and "620" address copy to be routed out from sign faces with 3/4" Clear Acrylic push-thru copy. Edges of clear acrylic to be polished for better light transmission from White and RGB LED modules. "Unique DaySpa Make Up" to be routed and backed with White acrylic to illuminate White. Base, Foundation and sign anchors - By Others.

Sign is for concept purposes only.



620 N Washington Street
 Naperville, IL 60563

drawn by
 PAMELA F

• job#: 17-7136
 • 12-04-17
 • rev.# 01-30-18

Comments:



1130 N. Garfield
 Lombard, IL 60148 Ph.# 630.424.6100 Fx.# 630.424.6120 WWW.OLYSIGNS.COM

THIS IS AN ORIGINAL, UNPUBLISHED DRAWING SUBMITTED IN CONNECTION WITH A PROJECT WE ARE PLANNING FOR YOU. THIS IS NOT TO BE COPIED, REPRODUCED, EXHIBITED OR SHOWN TO ANYONE OUTSIDE OF YOUR ORGANIZATION WITHOUT THE WRITTEN PERMISSION OF OLYMPIC SIGNS, INC. ARTWORK IS EXCLUSIVE PROPERTY OF OLYMPIC SIGN INC.



PROPOSED NIGHT CONCEPT



LUXE SKIN
UNIQUE DAYSPA
MAKE UP

620 N Washington Street
Naperville, IL 60563

drawn by
PAMELA F

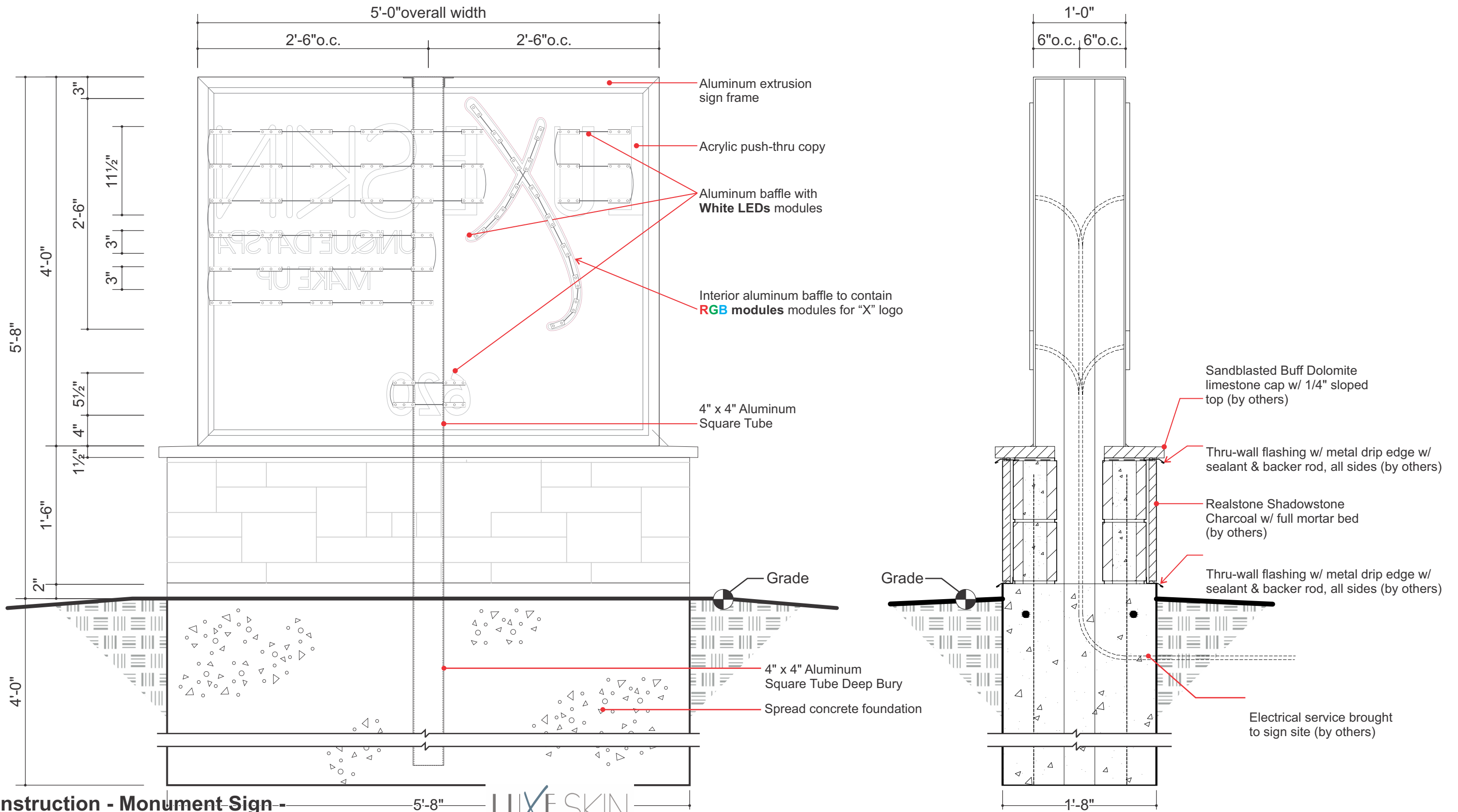
• job#: 17-7136
• 12-04-17
• rev.# 01-30-18

**OLYMPIC
SIGNS**

1130 N. Garfield
Lombard, IL 60148 Ph.# **630.424.6100** Fx.# 630.424.6120 **WWW.OLYSIGNS.COM**

THIS IS AN ORIGINAL, UNPUBLISHED DRAWING SUBMITTED IN CONNECTION WITH A PROJECT WE ARE PLANNING FOR YOU. THIS IS NOT TO BE COPIED, REPRODUCED, EXHIBITED OR SHOWN TO ANYONE OUTSIDE OF YOUR ORGANIZATION WITHOUT THE WRITTEN PERMISSION OF OLYMPIC SIGNS, INC. ARTWORK IS EXCLUSIVE PROPERTY OF OLYMPIC SIGN INC.

Comments:



Construction - Monument Sign -

Scale 1" = 1'-0"



1130 N. Garfield
Lombard, IL 60148

account representative
AL SANTA MARIA

client

LUXE SKIN
UNIQUE DAYSPA
MAKE UP
620 N Washington Street
Naperville, IL 60563

drawn by
PAMELA F

• job#: 17-7136
• 12-04-17
• rev.# 01-30-18

Comments:

CONSTRUCTION

THIS IS AN ORIGINAL, UNPUBLISHED DRAWING SUBMITTED IN CONNECTION WITH A PROJECT WE ARE PLANNING FOR YOU. THIS IS NOT TO BE COPIED, REPRODUCED, EXHIBITED OR SHOWN TO ANYONE OUTSIDE OF YOUR ORGANIZATION WITHOUT THE WRITTEN PERMISSION OF OLYMPIC SIGNS, INC. ARTWORK IS EXCLUSIVE PROPERTY OF OLYMPIC SIGN INC.