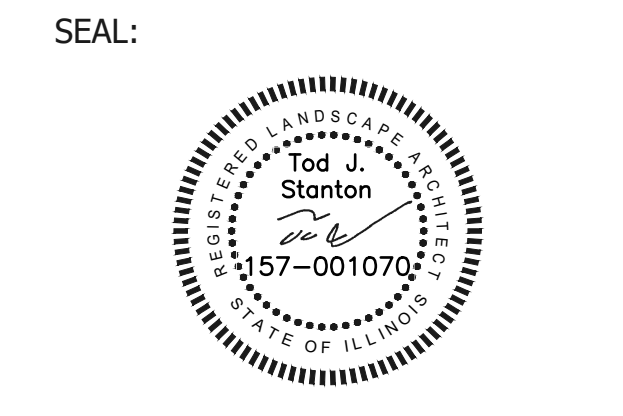


PLANT SCHEDULE

TREE	BOTANICAL / COMMON NAME	SIZE	CONTAINER	QTY	
	Acer freemanii 'Autumn Blaze' / Autumn Blaze Maple	8 & 8	3" Cal	36	
	Acer rubrum 'October Glory' TM / October Glory Maple	8 & 8	3" Cal	36	
	Amelanchier x grandiflora 'Cala's Select' / Serviceberry	8 & 8	2.5" Cal	12	
	Cercis canadensis 'Home' / Eastern Red Bud	8 & 8	2.5" Cal	3	
	Cornus mas 'Golden Glory' / Golden Glory Cornelian Cherry	8 & 8	2.5" Cal	10	
	Gleditsia inaequalis 'Skyline' / Skyline Honey Locust	8 & 8	2.5" Cal	55	
	Morus x 'Cocorabunt' / Cocorabunt Crabapple	8 & 8	2" Cal	11	
	Picea glauca 'Densata' / Black Hills Spruce	8 & 8	2.5" Cal	3	
	Pinus strobus / White Pine	8 & 8		20	
SHRUB	BOTANICAL / COMMON NAME	SIZE	CONTAINER	QTY	
	Buxus x 'Chicagoland Green' TM / Glencoe Boxwood	3 gal		117	
	Euonymus alatus 'Compactus' / Compact Burning Bush	3 gal		13	
	Hydrangea paniculata 'Little Quick Fire' / Little Quick Fire Hydrangea	3 gal		33	
	Physocarpus opulifolius 'Diablo' / Diablo Ninebark	3 gal		66	
	Ribes alpinum 'Green Mound' / Green Mound Alpine Currant	3 gal	24" H.	19	
	Rosa x 'Knockout' TM / Rose	3 gal	30" H.	35	
	Spiraea x bumalda 'Froebelii' / Froebel Spirea	3 gal		95	
	Thuja occidentalis 'Techny' / Techny Arborvitae	8 & 8	4" H	19	
	Viburnum dentatum 'Autumn Jazz' / Southern Arrowwood	3 gal		77	
GROUND COVERS	BOTANICAL / COMMON NAME	SIZE	CONTAINER	SPACING	QTY
	Hemerocallis x 'Stella de Oro' / Stella de Oro Daylily	1 gal		18" o.c.	2,388 sf
	Fernisium atropurpureum 'Hornet' / Hornet Dwarf Fountain Grass	1 gal		18" o.c.	726 sf
	Vinca minor 'Dart's Blue' / Dart's Blue Periwinkle	flat		12" o.c.	495 sf
SEED					
	Bluegrass, Fescue and Rye Blend with Bonset				119,000 sf
PR1	Corona Stormwater Seed Mix with Bonset				35,000 sf

REV.	COMMENT	DATE
1	PLAN RESUBMITAL	9/14/2020
2	PLAN RESUBMITAL	12/3/2020

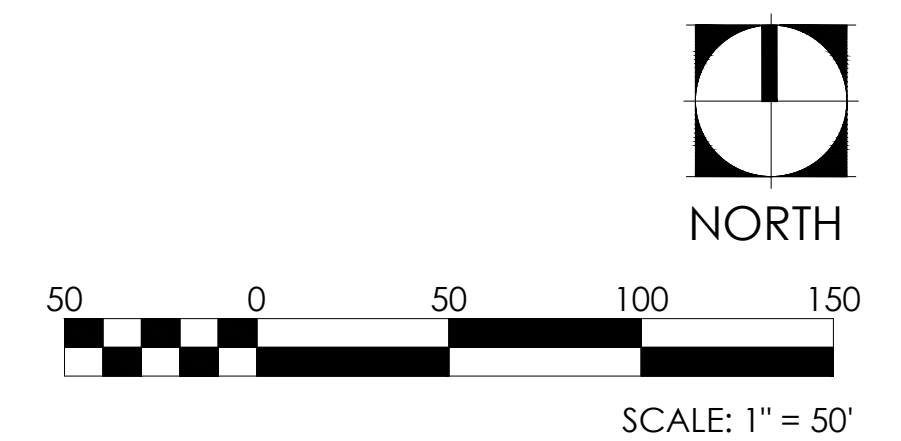


DATE: 5/1/2020
JOB NO.: 19-737M
DRAWN BY: TS
CHECKED BY: TS

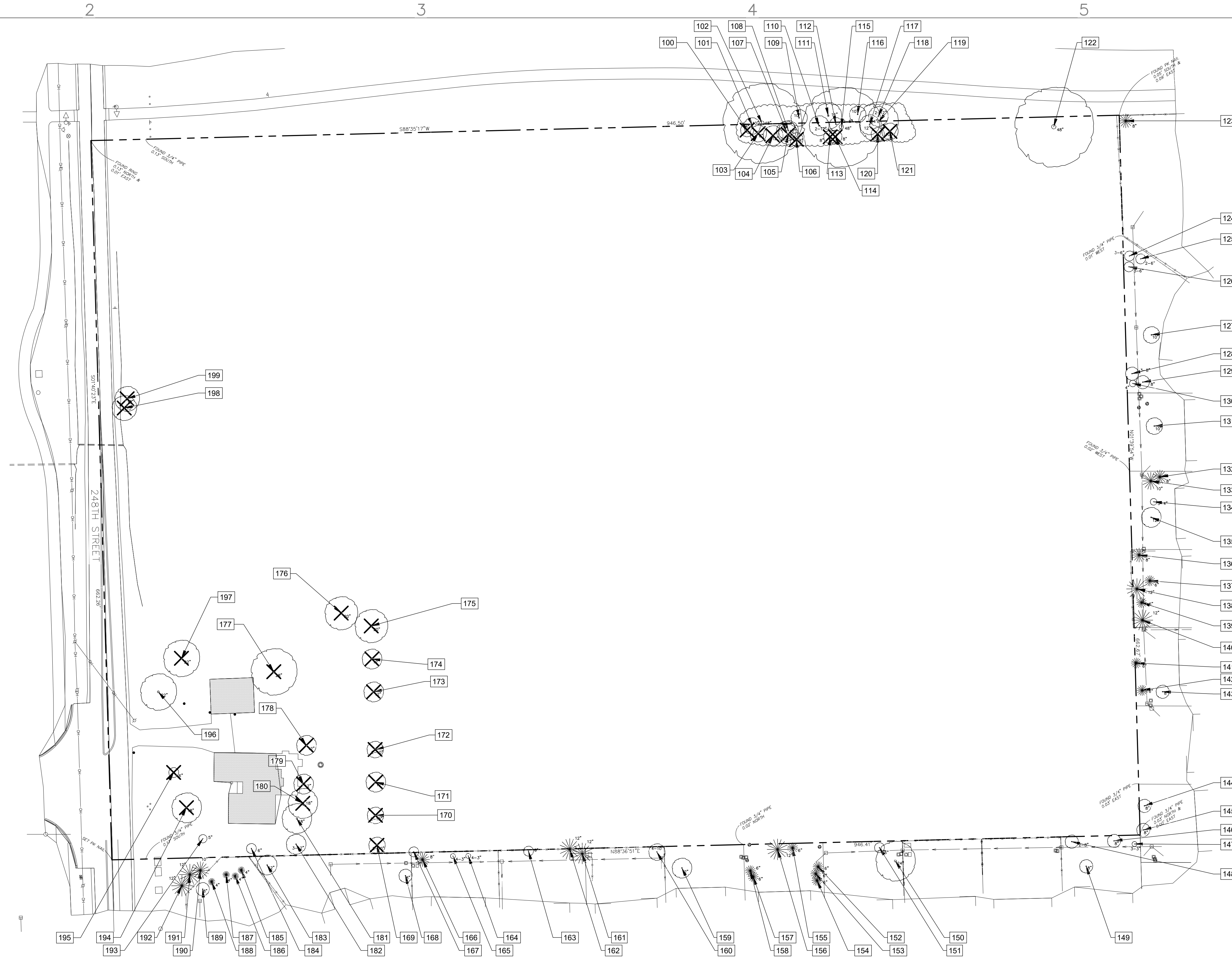
DRAWING TITLE:
CONCEPTUAL
LANDSCAPE
MASTER PLAN

SHEET NO.:
LP-100

© DESIGN PERSPECTIVES INC. ALL RIGHTS RESERVED



CALLOUT	SPECIES	COMMON NAME	TRUNK	DBH	CONDITION	NOTES
100	PYRUS CALLERYANA	ORNAMENTAL PEAR	SINGLE	8"	UNKNOWN	REMOVE
101	CELTIS OCCIDENTALIS	HACKBERRY	SINGLE	10"	UNKNOWN	PROTECT
102	CELTIS OCCIDENTALIS	HACKBERRY	SINGLE	48"	UNKNOWN	PROTECT
103	ULMUS PUMILA	SIBERIAN ELM	SINGLE	8"	UNKNOWN	REMOVE
104	MORUS SPEC.	MULBERRY	SINGLE	12"	UNKNOWN	REMOVE
105	MORUS SPEC.	MULBERRY	SINGLE	12"	UNKNOWN	REMOVE
106	MORUS SPEC.	MULBERRY	SINGLE	8"	UNKNOWN	REMOVE
107	CELTIS OCCIDENTALIS	HACKBERRY	SINGLE	12"	UNKNOWN	PROTECT
108	CELTIS OCCIDENTALIS	HACKBERRY	SINGLE	12"	UNKNOWN	PROTECT
109	MORUS SPEC.	MULBERRY	SINGLE	10"	UNKNOWN	PROTECT
110	MORUS SPEC.	MULBERRY	MULTI	2-12"	UNKNOWN	PROTECT
111	MORUS SPEC.	MULBERRY	SINGLE	16"	UNKNOWN	PROTECT
112	MORUS SPEC.	MULBERRY	MULTI	2-8"	UNKNOWN	PROTECT
113	MACLURA POMIFERA	OSAGE ORANGE	SINGLE	8"	UNKNOWN	REMOVE
114	MACLURA POMIFERA	OSAGE ORANGE	SINGLE	8"	UNKNOWN	REMOVE
115	MORUS SPEC.	MULBERRY	SINGLE	48"	UNKNOWN	PROTECT
116	PYRUS CALLERYANA	ORNAMENTAL PEAR	SINGLE	10"	UNKNOWN	PROTECT
117	PYRUS CALLERYANA	ORNAMENTAL PEAR	SINGLE	12"	UNKNOWN	PROTECT
118	PYRUS CALLERYANA	ORNAMENTAL PEAR	MULTI	2-12"	UNKNOWN	PROTECT
119	PYRUS CALLERYANA	ORNAMENTAL PEAR	SINGLE	24"	UNKNOWN	PROTECT
120	PYRUS CALLERYANA	ORNAMENTAL PEAR	SINGLE	8"	UNKNOWN	REMOVE
121	PYRUS CALLERYANA	ORNAMENTAL PEAR	SINGLE	10"	UNKNOWN	REMOVE
122	POPULUS DELTOIDES	COTTONWOOD	SINGLE	48"	UNKNOWN	PROTECT
123	PICEA SPEC.	SPRUCE	SINGLE	8"	UNKNOWN	PROTECT
124	BELTULA NIGRA	RIVER BIRCH	MULTI	3-6"	UNKNOWN	PROTECT
125	BELTULA NIGRA	RIVER BIRCH	MULTI	2-6"	UNKNOWN	PROTECT
126	BELTULA NIGRA	RIVER BIRCH	MULTI	3-6"	UNKNOWN	PROTECT
127	PYRUS CALLERYANA	ORNAMENTAL PEAR	SINGLE	10"	UNKNOWN	PROTECT
128	BELTULA NIGRA	RIVER BIRCH	MULTI	3-8"	UNKNOWN	PROTECT
129	BELTULA NIGRA	RIVER BIRCH	SINGLE	8"	UNKNOWN	PROTECT
130	BELTULA NIGRA	RIVER BIRCH	SINGLE	4"	UNKNOWN	PROTECT
131	PYRUS CALLERYANA	ORNAMENTAL PEAR	SINGLE	10"	UNKNOWN	PROTECT
132	PICEA SPEC.	SPRUCE	SINGLE	8"	UNKNOWN	PROTECT
133	PICEA SPEC.	SPRUCE	SINGLE	10"	UNKNOWN	PROTECT
134	BELTULA NIGRA	RIVER BIRCH	MULTI	5-4"	UNKNOWN	PROTECT
135	ACER SPEC.	MAPLE	SINGLE	12"	UNKNOWN	PROTECT
136	PINUS STROBUS	WHITE PINE	SINGLE	8"	UNKNOWN	PROTECT
137	PICEA SPEC.	SPRUCE	SINGLE	6"	UNKNOWN	PROTECT
138	PINUS STROBUS	WHITE PINE	SINGLE	12"	UNKNOWN	PROTECT
139	PICEA SPEC.	SPRUCE	SINGLE	6"	UNKNOWN	PROTECT
140	PINUS STROBUS	WHITE PINE	SINGLE	12"	UNKNOWN	PROTECT
141	PICEA SPEC.	SPRUCE	SINGLE	6"	UNKNOWN	PROTECT
142	PICEA SPEC.	SPRUCE	SINGLE	6"	UNKNOWN	PROTECT
143	PYRUS CALLERYANA	ORNAMENTAL PEAR	SINGLE	8"	UNKNOWN	PROTECT
144	PYRUS CALLERYANA	ORNAMENTAL PEAR	SINGLE	8"	UNKNOWN	PROTECT
145	PYRUS CALLERYANA	ORNAMENTAL PEAR	SINGLE	8"	UNKNOWN	PROTECT
146	BELTULA NIGRA	RIVER BIRCH	SINGLE	8"	UNKNOWN	PROTECT
147	ACER SPEC.	MAPLE	MULTI	3-3"	UNKNOWN	PROTECT
148	BELTULA NIGRA	RIVER BIRCH	MULTI	2-8"	UNKNOWN	PROTECT
149	ACER SPEC.	MAPLE	SINGLE	8"	UNKNOWN	PROTECT
150	ACER SPEC.	MAPLE	SINGLE	24"	UNKNOWN	PROTECT
151	ACER RUBRUM	RED MAPLE	SINGLE	6"	UNKNOWN	PROTECT
152	PICEA SPEC.	SPRUCE	SINGLE	6"	UNKNOWN	PROTECT
153	PICEA SPEC.	SPRUCE	SINGLE	6"	UNKNOWN	PROTECT
154	PICEA SPEC.	SPRUCE	SINGLE	6"	UNKNOWN	PROTECT
155	PICEA SPEC.	SPRUCE	SINGLE	6"	UNKNOWN	PROTECT
156	PICEA SPEC.	SPRUCE	SINGLE	12"	UNKNOWN	PROTECT
157	PICEA SPEC.	SPRUCE	SINGLE	6"	UNKNOWN	PROTECT
158	PICEA SPEC.	SPRUCE	SINGLE	6"	UNKNOWN	PROTECT
159	PYRUS CALLERYANA	ORNAMENTAL PEAR	SINGLE	12"	UNKNOWN	PROTECT
160	MORUS SPEC.	MULBERRY	MULTI	4-10"	UNKNOWN	PROTECT
161	PICEA SPEC.	SPRUCE	SINGLE	12"	UNKNOWN	PROTECT
162	PICEA SPEC.	SPRUCE	SINGLE	12"	UNKNOWN	PROTECT
163	UNKNOWN	ORNAMENTAL TREE	SINGLE	6"	UNKNOWN	PROTECT
164	AMELANCHIER SPEC.	SERVICEBERRY	MULTI	4-3"	UNKNOWN	PROTECT
165	AMELANCHIER SPEC.	SERVICEBERRY	MULTI	4-3"	UNKNOWN	PROTECT
166	PICEA SPEC.	SPRUCE	SINGLE	8"	UNKNOWN	PROTECT
167	UNKNOWN	UNKNOWN	SINGLE	6"	UNKNOWN	PROTECT
168	UNKNOWN	UNKNOWN	SINGLE	8"	UNKNOWN	PROTECT
169	MORUS SPEC.	MULBERRY	MULTI	2-10"	FAIR	REMOVE
170	MORUS SPEC.	MULBERRY	MULTI	2-10"	FAIR	REMOVE
171	MORUS SPEC.	MULBERRY	SINGLE	12"	FAIR	REMOVE
172	MORUS SPEC.	MULBERRY	MULTI	2-10"	FAIR	REMOVE
173	MORUS SPEC.	MULBERRY	SINGLE	12"	FAIR	REMOVE
174	MORUS SPEC.	MULBERRY	SINGLE	12"	FAIR	REMOVE
175	GLEDITSIA TRIACANTHOS	THORNLESS HONEYLOCUST	SINGLE	20"	FAIR	REMOVE
176	ACER SACCHARINUM	SILVER MAPLE	SINGLE	20"	FAIR	REMOVE
177	ACER SACCHARINUM	SILVER MAPLE	SINGLE	28"	FAIR	REMOVE
178	ULMUS PUMILA	SIBERIAN ELM	SINGLE	12"	POOR	REMOVE
179	ULMUS PUMILA	SIBERIAN ELM	SINGLE	12"	POOR	REMOVE
180	REMOVED	REMOVED	SINGLE	18"	REMOVED	GONE
181	MALUS SPEC.	CRABAPPLE	SINGLE	18"	BAD	PROTECT
182	MALUS SPEC.	CRABAPPLE	MULTI	3-12"	BAD	PROTECT
183	PYRUS CALLERYANA	ORNAMENTAL PEAR	SINGLE	12"	UNKNOWN	PROTECT
184	ACER RUBRUM	RED MAPLE	SINGLE	6"	FAIR	PROTECT
185	PSEUDOTSUGA SPEC.	FIR	SINGLE	4"	UNKNOWN	PROTECT
186	PSEUDOTSUGA SPEC.	FIR	SINGLE	4"	UNKNOWN	PROTECT
187	PSEUDOTSUGA SPEC.	FIR	SINGLE	4"	UNKNOWN	PROTECT
188	PSEUDOTSUGA SPEC.	FIR	SINGLE	4"	UNKNOWN	PROTECT
189	UNKNOWN	UNKNOWN	SINGLE	8"	UNKNOWN	PROTECT
190	PINUS NIGRA	AUSTRIAN PINE	SINGLE	10"	POOR	PROTECT
191	PINUS NIGRA	AUSTRIAN PINE	SINGLE	12"	POOR	PROTECT
192	PINUS NIGRA	AUSTRIAN PINE	SINGLE	12"	POOR	PROTECT
193	ACER PLATANOIDES	NORWAY MAPLE	SINGLE	5"	FAIR	PROTECT
194	PLATANUS OCCIDENTALIS	SYCAMORE	SINGLE	18"	FAIR	REMOVE
195	ACER RUBRUM	RED MAPLE	SINGLE	6"	POOR	REMOVE
196	ACER SACCHARINUM	SILVER MAPLE	SINGLE	22"	FAIR	PROTECT
197	ACER SACCHARINUM	SILVER MAPLE	SINGLE	22"	FAIR	REMOVE
198	REMOVED	REMOVED	SINGLE	15"	REMOVED	GONE
199	REMOVED	REMOVED	SINGLE	15"	REMOVED	GONE

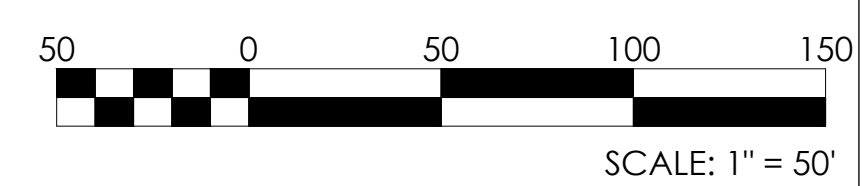


EXISTING TREE CALCULATIONS:

1. EXISTING TREES REMOVED	23
EXISTING TREES PROTECTED	74
EXISTING TREES MISSING IN FIELD	3

- TREE PROTECTION FENCING SHALL BE INSTALLED AND APPROVED PRIOR TO ISSUANCE OF BUILDING PERMIT.
- PRIOR TO REMOVAL OF TREES, CONTRACTOR SHALL CONTACT THE CITY FORESTER FOR SITE VISIT & CONSENT OF REMOVAL.

X = TREE TO BE REMOVED



REV.	COMMENT	DATE

SEAL:



DATE: 8/10/2020
JOB NO.: 19-737M
DRAWN BY: CE
CHECKED BY: TS

DRAWING TITLE:
TREE PROTECTION/REMOVAL PLAN
SHEET NO.:
TP-100