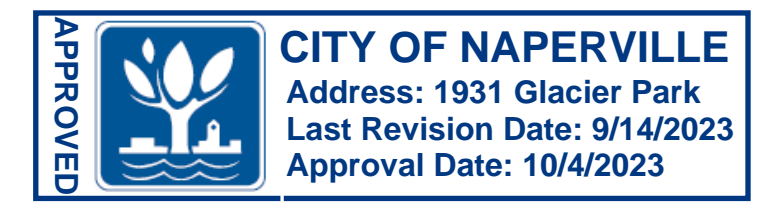
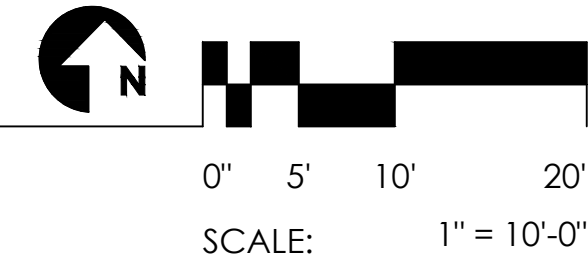


**LANDSCAPE PLAN**



**PLANT PALETTE - OVERALL**

SHADE TREES			
NAME	QTY.	SIZE	COMMENTS
<i>Acer rubrum</i> 'Autumn Blaze' AUTUMN BLAZE RED MAPLE	01	2" CAL.	12' HT. 2" CAL. MIN.
<i>Tilia cordata</i> LITTLELEAF LINDEN	01	2" CAL.	12' HT. 2" CAL. MIN.
<i>Amelanchier arborea</i> SHADBUSH	03	1" CAL.	8' HT. 1" CAL. MIN.

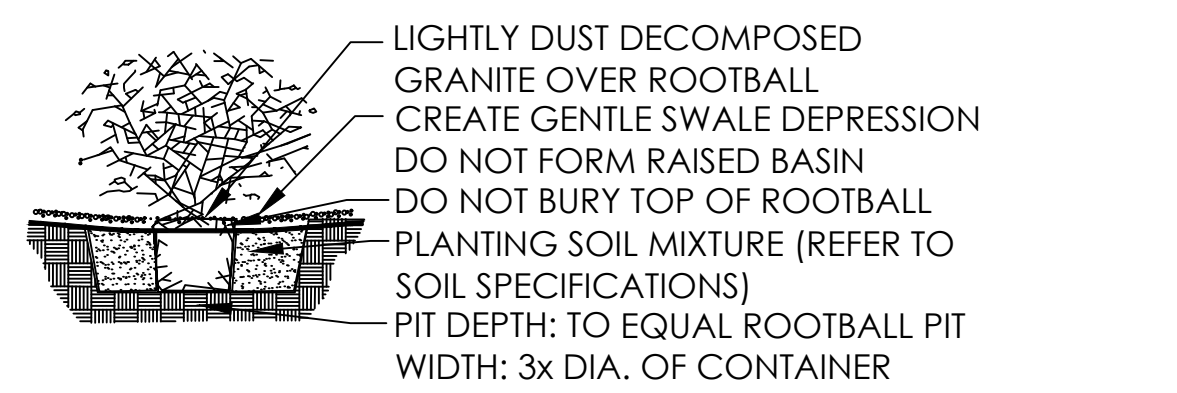
ACCENTS			
NAME	QTY.	SIZE	COMMENTS
<i>Berberis thunbergii</i> ADMIRATION JAPANESE BARBERRY	31	5 GAL	30" HT.
<i>Cornus alba</i> 'Sibirica' RED TWIG DOGWOOD	06	5 GAL	30" HT.
<i>Viburnum plicatum tomentosum</i> Shasta 09 SHASTA DOUBLEFILE VIBURNUM	5	5 GAL	30" HT.
<i>Weigela florida</i> 'Red Prince' 'RED PRINCE' WEIGELA	05	5 GAL	30" HT.

GROUNDCOVERS/PERENNIALS			
NAME	QTY.	SIZE	COMMENTS
<i>Euonymus fortunei</i> 'Variegata' WINTERCREEPER EUONYMUS	34	1 GAL	
<i>Calamagrostis x acutiflora</i> 'Karl Foerster' KARL FOERSTER PINK FEATHER REED GRASS	18	3 GAL	
<i>Cynodon dactylon</i> BERMUDA LAWN GRASS		1,370 S.F.	
			EXISTING TURF

**LANDSCAPE MATERIALS**  
Shredded hardwood mulch- 3" in all non turf areas

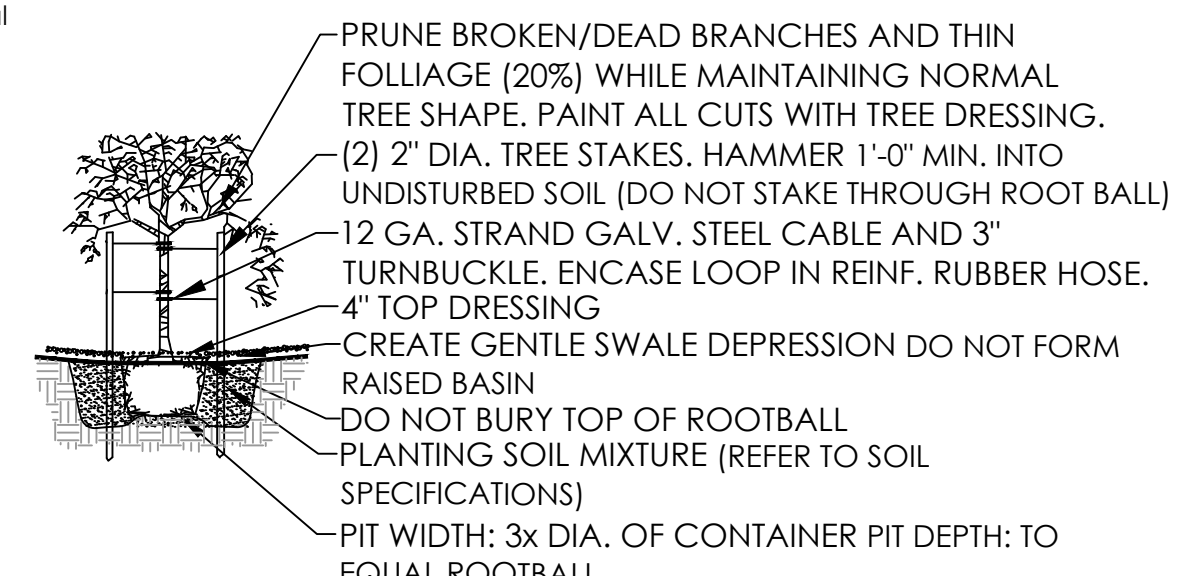
**LANDSCAPE NOTES**

- All finished grades to be approved by the landscape architect prior to the installation of any plant material.
- Plant material to be approved by the landscape architect prior to installation.
- All tree locations to be staked by the landscape contractor and approved by the landscape architect prior to any holes being dug.
- The contractor is to provide a 2 lb sample of the proposed decomposed granite for review and approval by the landscape architect and owner. The contractor shall provide 100% coverage of non-paved areas within the limits of construction.
- For all tree planting that encounters hardpan/caliche provide separate unit price to install trees with an auger.
- It is the responsibility of the landscape contractor to inform the landscape architect of any plant material concerns based on the planting season (e.g. summer vs winter). Should the installer shall request a substitution or delay in planting. Once planted, all plant material is subject to specified warranties.
- All palm and deciduous trees to be unconditionally guaranteed for one year after installation. All other plants shall be guaranteed for a minimum period of 90 days from the date of final approval by the city/owner. Any plant materials not approved by city/owner prior to October 1 of the calendar year in which they are installed shall be further guaranteed until may 20th of the following calendar year.
- Trees, shrubs, vines, groundcovers and turf which have to be replaced under the terms of the guarantee shall be guaranteed for an additional 90 days from the date of replacement.
- The landscape contractor shall be responsible for providing all finished grades and for maintaining positive drainage away from all buildings during the finish grading process. All slopes not to exceed 4:1 in landscape areas.
- The landscape contractor shall verify berm and retention basin locations shown on these plans with those on the civil engineering plans. Should a discrepancy exist between the plans, Studio Sprawl should be notified immediately.
- Under no circumstance shall any tree be planted within 6' of any building without the express written approval of the landscape architect.
- Trees and shrubs shall be placed a minimum of 6' from public accessways, utility cabinets and fire hydrants.
- Shrubs must be at maturity, 6' from the rear of a fire hydrant. No material other than groundcovers may be placed between a fire hydrant and the street or roadway or 6' on either side. Field verify all hydrant location with the civil engineering plans.
- All site improvements, including landscape and site clean up must be completed prior to final approval or certificate of occupancy.
- Trees adjacent to pedestrian walkways should have minimum canopy clearance of 6'8".
- No plant material with mature growth greater than three (3) feet in height shall be planted within potable water, sanitary sewer, or non-potable irrigation easements. [Volume II, Section 2.05(A)]
- No shrubs shall be planted within five (5) feet or trees within ten (10) feet of potable and non-potable water meters, fire hydrants, sanitary sewer manholes, or potable water, sanitary water, and non-potable irrigation mains and services. [Volume III, Section 2.05(B)]
- Automatic irrigation system shall be equipped with an automatic rain detection device. [Chapter 18.44.100.3.b]



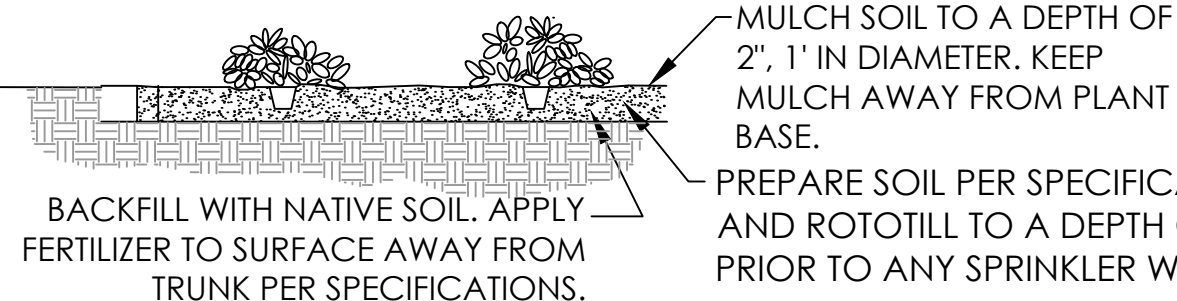
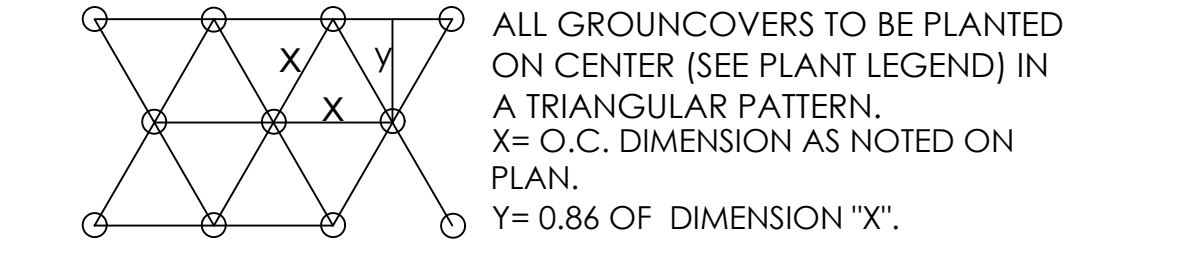
PLANTS SHALL BE INSPECTED FOR ROOTBOUND CONDITIONS BEFORE PLANTING. ANY ROOTBOUND PLANT SHALL BE REPLACED WITH SUITABLE PLANT.

**SHRUB PLANTING** NO SCALE



PLANTS SHALL BE INSPECTED FOR ROOTBOUND CONDITIONS BEFORE PLANTING. ANY ROOTBOUND PLANT SHALL BE REPLACED WITH SUITABLE PLANT.

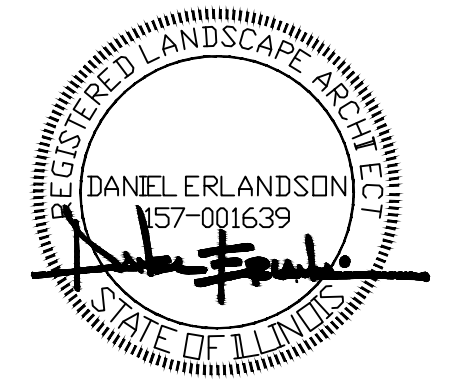
**TREE PLANTING** NO SCALE



**GROUNDCOVER PLANTING** NO SCALE

**studio X SPRAWL**  
po box 14012  
scottsdale, arizona 85267  
p 480.361.9281  
f 480.361.9276

**BLAIR S. LEACH, AIA**  
NCARB, LEED AP BD+C  
3631 NORTH KATMAI  
MESA, AZ 85215



PROJECT ADDRESS:  
1931 GLACIER PARK AVE  
NAPERVILLE, IL 60540

REVISIONS:

TITLE:  
**LANDSCAPE PLAN**

DATE:  
09.14.2023

PROJECT NO.  
22-268  
#S23-102

SHEET NO.

**L1.0**