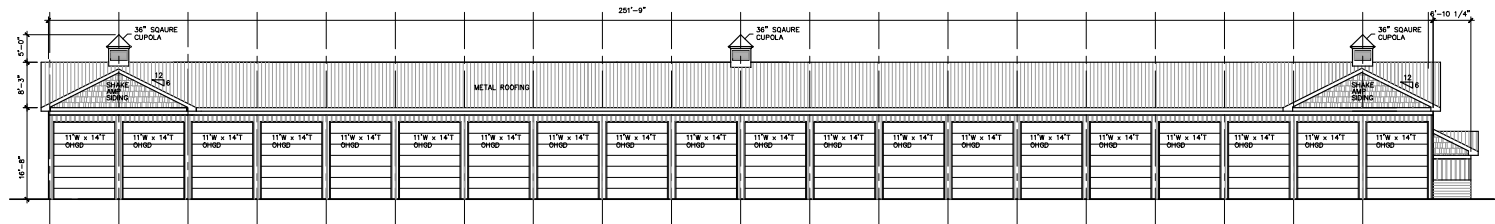
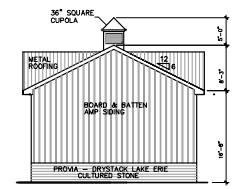


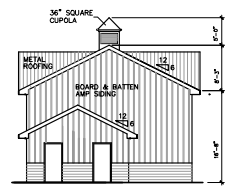
1 SOUTH ELEVATION SCHEME 1E  
SCALE: 3/32"=1'-0"



2 NORTH ELEVATION SCHEME 1E  
SCALE: 3/32"=1'-0"



4 EAST ELEVATION SCHEME 1E  
SCALE: 3/32"=1'-0"



3 WEST ELEVATION SCHEME 1E  
SCALE: 3/32"=1'-0"

AURORA CORPORATE CENTER  
DEVELOPMENT COMPANY  
2228 FERRY ROAD  
NAPERVILLE, ILLINOIS

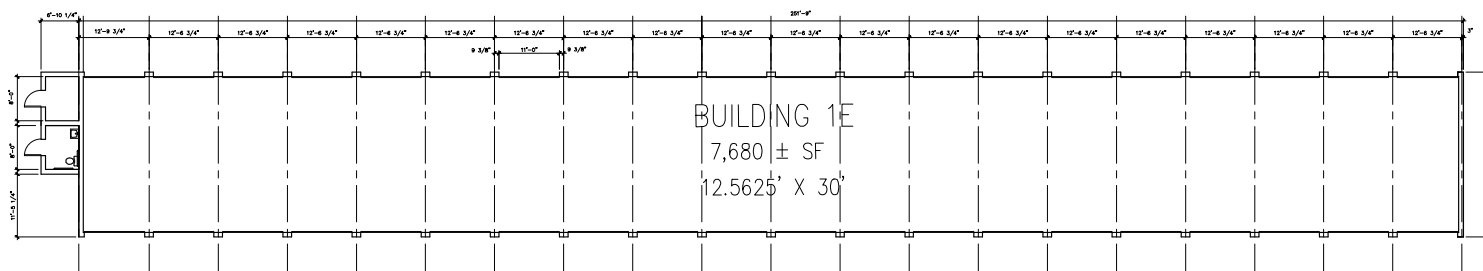
IRONGATE  
MOTOR PARK  
FERRY RD.  
NAPERVILLE, ILLINOIS

STEVEN W. HANSEN  
ARCHITECT  
800 LONGVIEW CT  
SILVER GROVE, IL  
630.466.8021 - 60554

#	DATE	DESCRIPTION
7	01-30-2024	CITY OF NAPERVILLE COMMENTS 2
8	2-04-2024	PLAN APPROVAL
3	9-26-2023	PRELIMINARY ELEVATION 1E SCHEME 7.1
4	9-26-2023	PRELIMINARY ELEVATION 1E
5	11-28-2023	PRELIMINARY ELEVATION 1E
6	11-28-2023	PRELIMINARY ELEVATION 1E

PROJECT NO. 23-STOR

ELEVATION  
1E



1 FLOOR PLAN  
1E

SCALE: 3/32"=1'-0"

AURORA CORPORATE CENTER  
DEVELOPMENT COMPANY  
2228 FERRY ROAD  
NAPERVILLE, ILLINOIS

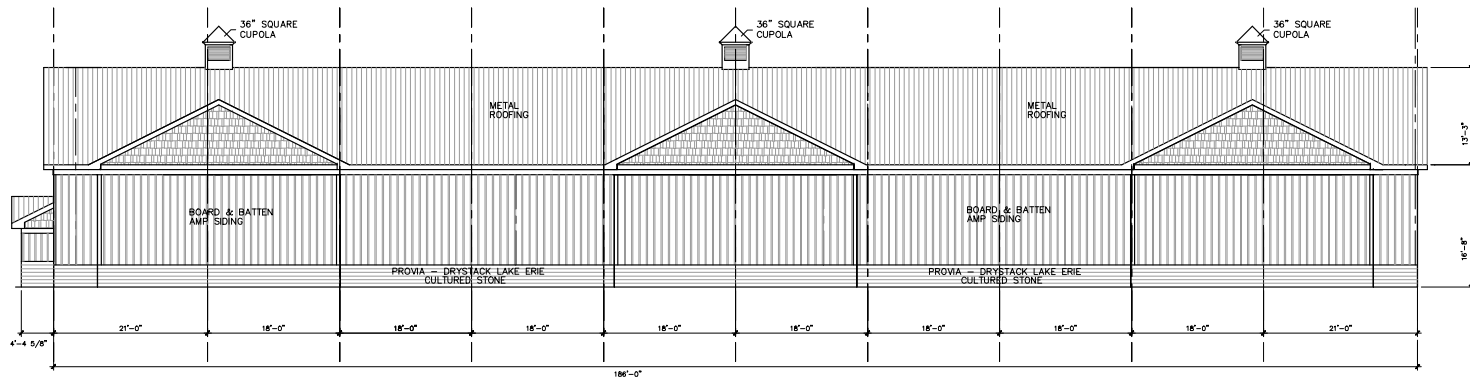
IRON GATE  
MOTOR PARK  
FERRY RD.  
NAPERVILLE, ILLINOIS

STEVEN W. HANSEN  
ARCHITECT  
890 LONGVIEW CT  
SILGATE GROVE, IL  
630.466.8021 - 60554

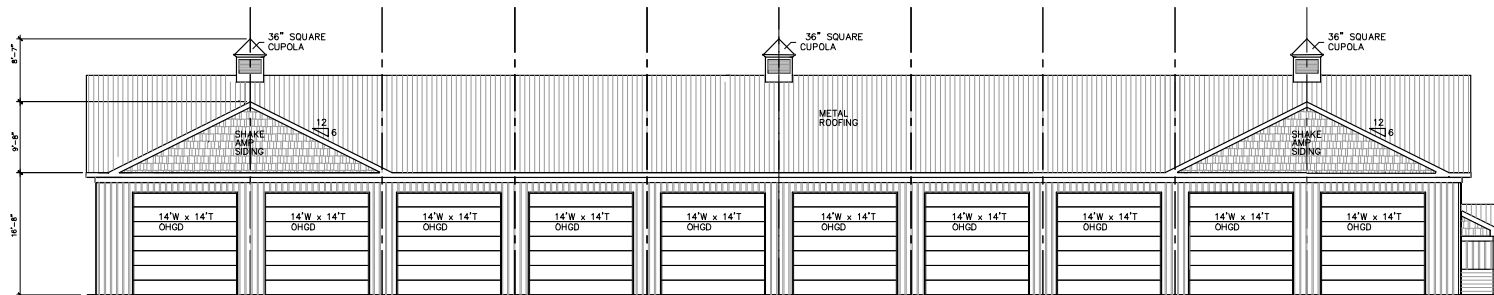
#	DATE	DESCRIPTION
1	01-21-2024	FLOOR PLAN REVIEW
2	02-24-2024	PLAN COMMISSION

PROJECT NO. 23-STOR

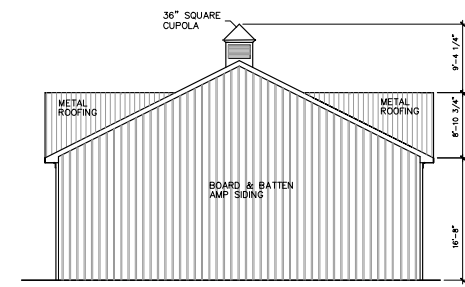
FLOORPLAN  
1E



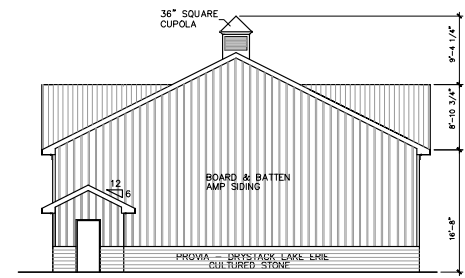
1 PRELIMINARY NORTH ELEVATION SCHEME 1W  
SCALE: 1/8"=1'-0"



2 PRELIMINARY SOUTH ELEVATION SCHEME 1W  
SCALE: 1/8"=1'-0"



4 WEST ELEVATION SCHEME 1W  
SCALE: 1/8"=1'-0"



3 EAST ELEVATION SCHEME 1W  
SCALE: 1/8"=1'-0"

AURORA CORPORATE CENTER  
DEVELOPMENT COMPANY  
2228 FERRY ROAD  
NAPERVILLE, ILLINOIS

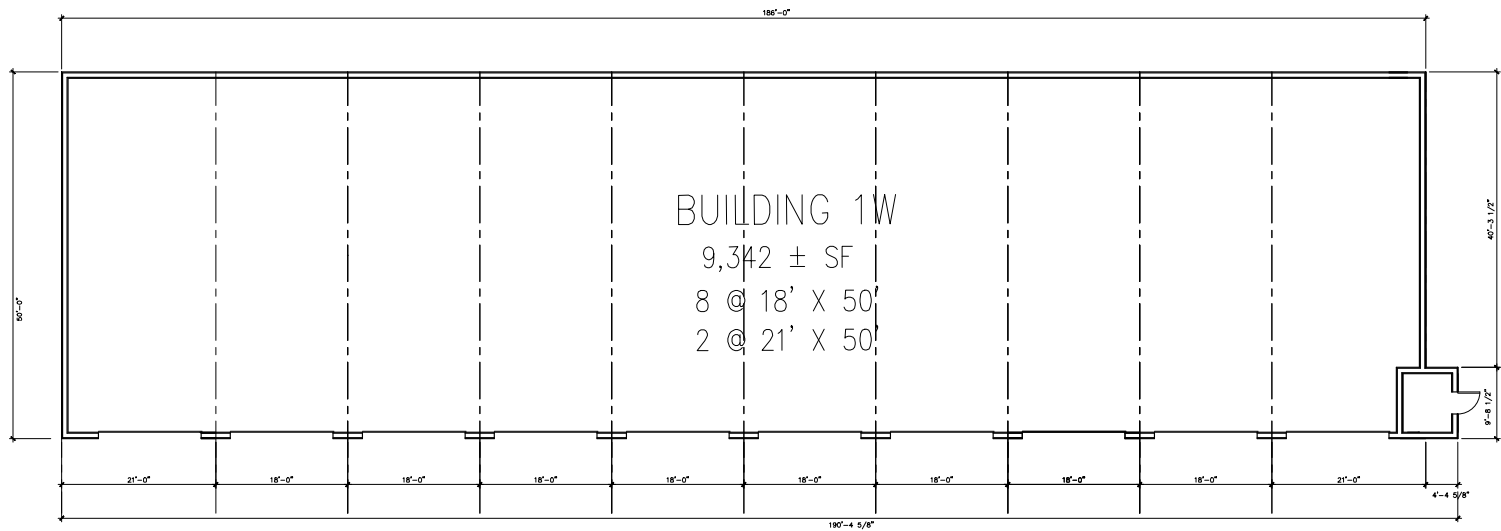
IRON GATE  
MOTOR PARK  
FERRY RD.  
NAPERVILLE, ILLINOIS

STEVEN W. HANSEN  
ARCHITECT  
890 LONGVIEW CT.  
SILVER GROVE, IL  
630.466.8021 - 60554

#	DATE	DESCRIPTION
1	10-10-2023	PRELIMINARY ELEVATION 1W
2	01-22-2024	PRELIMINARY ELEVATION 1W
3	01-23-2024	PRELIMINARY ELEVATION 1W
4	01-24-2024	PRELIMINARY ELEVATION 1W
5	10-24-2024	PARK COMMISSION

PROJECT NO. 23-STOR

ELEVATION  
1W



1 FLOORPLAN 1W  
SCALE: 1/8"=1'-0"

AURORA CORPORATE CENTER  
DEVELOPMENT COMPANY  
2228 FERRY ROAD  
NAPERVILLE, ILLINOIS

IRON GATE  
MOTOR PARK  
FERRY RD.  
NAPERVILLE, ILLINOIS

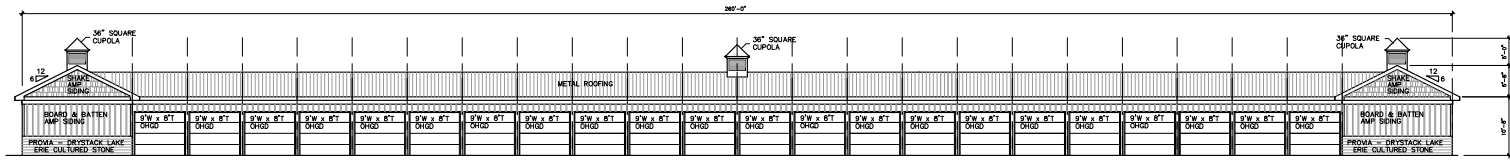
STEVEN W. HANSEN  
ARCHITECT  
890 LONGVIEW CT.  
SILGATE GROVE,  
IL. 60146  
630.466.6021 - 60554

#	DATE	DESCRIPTION
1	02-04-2024	PLAN COMMISSION

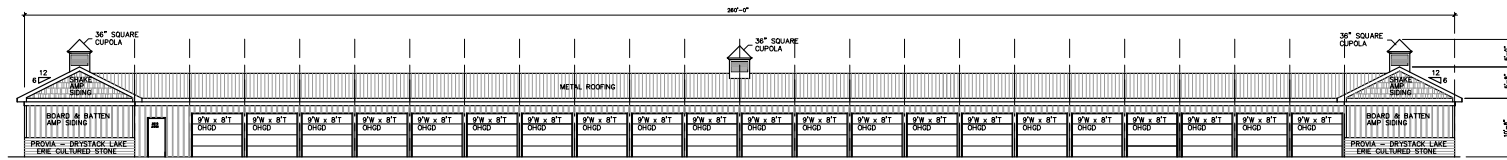
PROJECT NO. 23-STOR

FLOOR PLAN  
1W

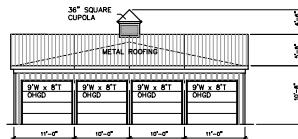
EXHIBIT E



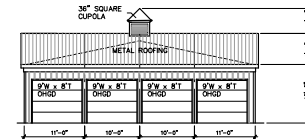
1 NORTH ELEVATION SCHEME 2E SCALE: 3/32"=1'-0"



2 SOUTH ELEVATION SCHEME 2E SCALE: 3/32"=1'-0"



4 WEST ELEVATION SCHEME 2E SCALE: 3/32"=1'-0"



3 EAST ELEVATION SCHEME 2E SCALE: 3/32"=1'-0"

AURORA CORPORATE CENTER  
DEVELOPMENT COMPANY  
2228 FERRY ROAD  
NAPERVILLE, ILLINOIS

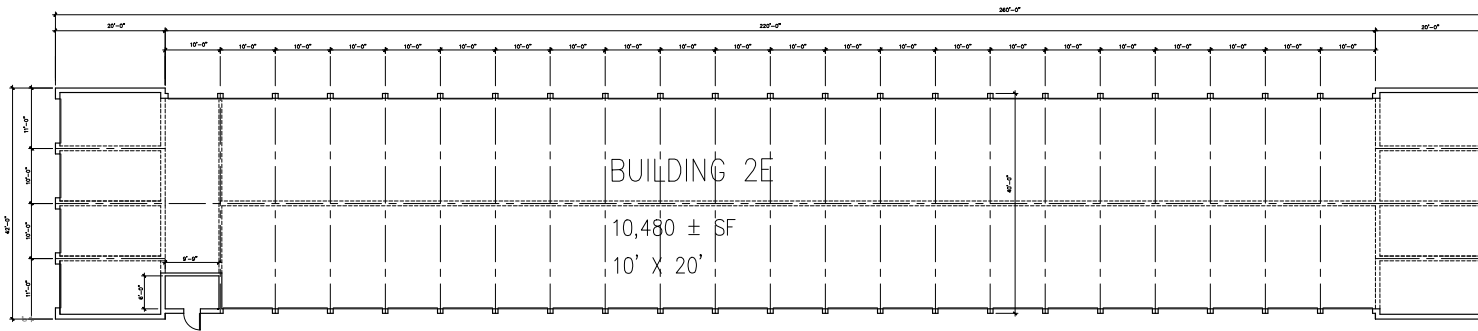
IRON GATE  
MOTOR PARK  
ERRY RD.  
NAPERVILLE, ILLINOIS

STEVEN W. HANSEN  
ARCHITECT  
800 LONGVIEW CT.  
SILVER CREEK, ILL.  
630.466.8021 - 60554

#	DATE	DESCRIPTION
7	11-08-2023	3 CUPOLAS
8	11-31-2023	NAPERVILLE REVIEW #2 COMMENTS
9	02-04-2024	PLANNING COMMISSION
4	2-28-2023	PRELIMINARY ELEVATION 2E
5	3-28-2023	PRELIMINARY ELEVATION 2E
6	10-24-2023	PRELIMINARY ELEVATION 2E

PROJECT NO. 23-STOR

ELEVATION  
2E



1 FLOOR PLAN  
2E

SCALE: 3/32"=1'-0"

AURORA CORPORATE CENTER  
DEVELOPMENT COMPANY  
2228 FERRY ROAD  
NAPERVILLE, ILLINOIS

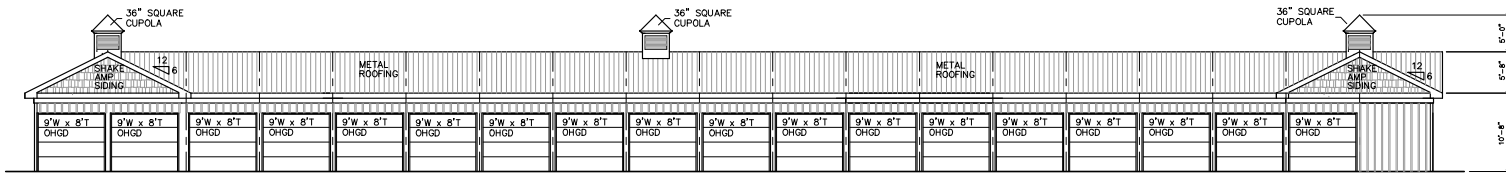
IRON GATE  
MOTOR PARK  
FERRY RD.  
NAPERVILLE, ILLINOIS

STEVEN W. HANSEN  
ARCHITECT  
890 LONGVIEW CT  
SILGATE GROVE, IL  
630.466.6021 - 60554

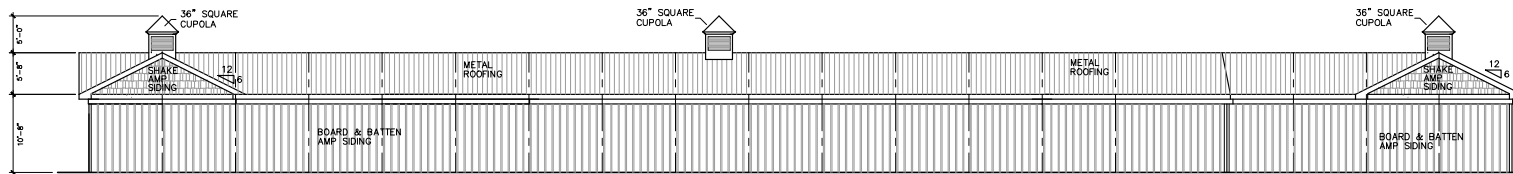
#	DATE	DESCRIPTION
1	01-31-2024	FLOOR PLAN REVIEW
2	02-04-2024	PLAN COMMISSION

PROJECT NO. 23-STOR

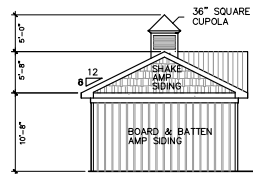
FLOORPLAN  
2E



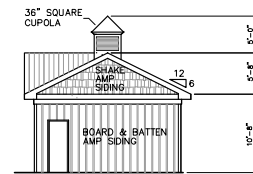
1 EAST ELEVATION SCHEME 2W  
SCALE: 1/8"=1'-0"



2 WEST ELEVATION SCHEME 2W  
SCALE: 1/8"=1'-0"



4 SOUTH ELEVATION SCHEME 2W  
SCALE: 1/8"=1'-0"



3 NORTH ELEVATION SCHEME 2W  
SCALE: 1/8"=1'-0"

AURORA CORPORATE CENTER  
DEVELOPMENT COMPANY  
2228 FERRY ROAD  
NAPERVILLE, ILLINOIS

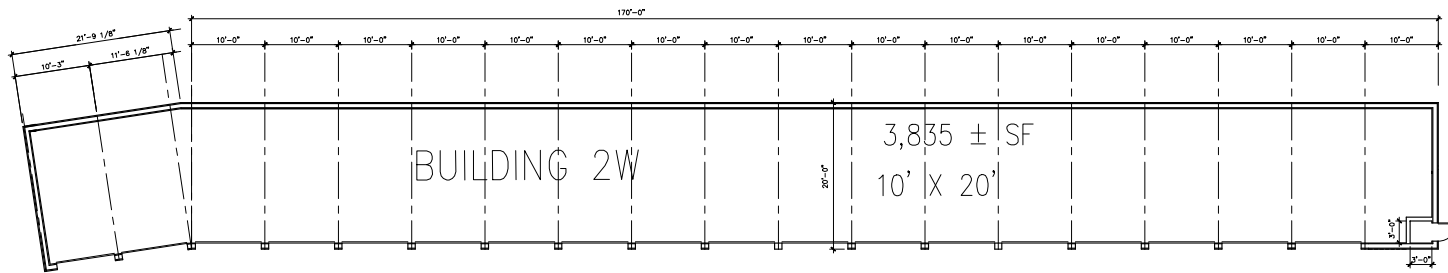
IRON GATE  
MOTOR PARK  
FERRY RD.  
NAPERVILLE, ILLINOIS

STEVEN W. HANSEN  
ARCHITECT  
890 LONGVIEW CT.  
SILVER CREEK, ILL.  
630.466.8021 - 60554

#	DATE	DESCRIPTION
1	02-04-2024	PLAN COMMISSION
2	02-04-2024	PLAN COMMISSION
3	3-22-2023	PRELIMINARY ELEVATION SCHEME 2.1
4	3-22-2023	PRELIMINARY ELEVATION 2E
5	10-24-2023	PRELIMINARY ELEVATION 2E
6	10-24-2023	PRELIMINARY ELEVATION 2E

PROJECT NO. 23-STOR

ELEVATION  
2W



1 FLOOR PLAN - 2W

SCALE: 1/8"=1'-0"

AURORA CORPORATE CENTER  
DEVELOPMENT COMPANY  
2228 FERRY ROAD  
NAPERVILLE, ILLINOIS

IRON GATE  
MOTOR PARK  
FERRY RD.  
NAPERVILLE, ILLINOIS

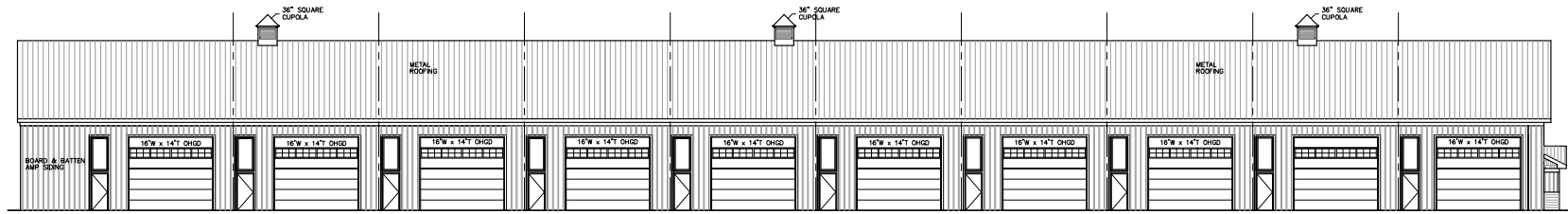
STEVEN W. HANSEN  
ARCHITECT  
890 LONGVIEW CT.  
SILGATE GROVE, IL.  
630.466.6021 - 60554

#	DATE	DESCRIPTION
1	02-04-2024	PLAN COMMISSION
2	02-08-2024	PLAN COMMISSION

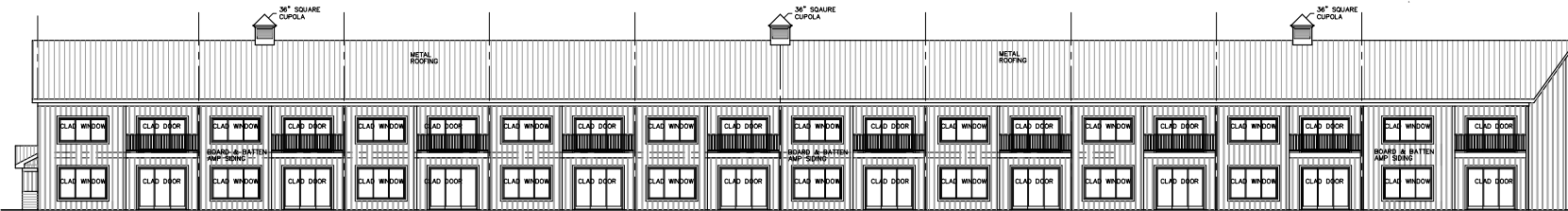
PROJECT NO. 23-STOR

PLAN  
2W

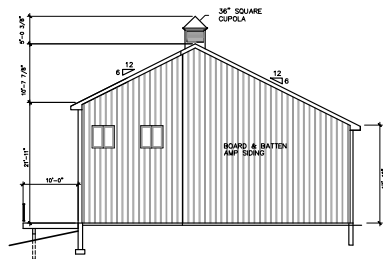




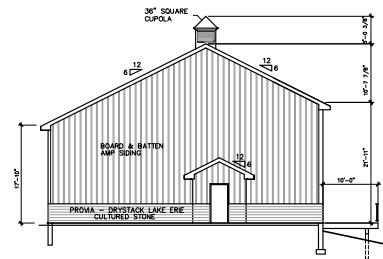
1 NORTH ELEVATION SCHEME 3E  
SCALE: 3/32"=1'-0"



2 SOUTH ELEVATION SCHEME  
SCALE: 3/32"=1'-0"



4 EAST ELEVATION SCHEME 3E  
SCALE: 3/32"=1'-0"

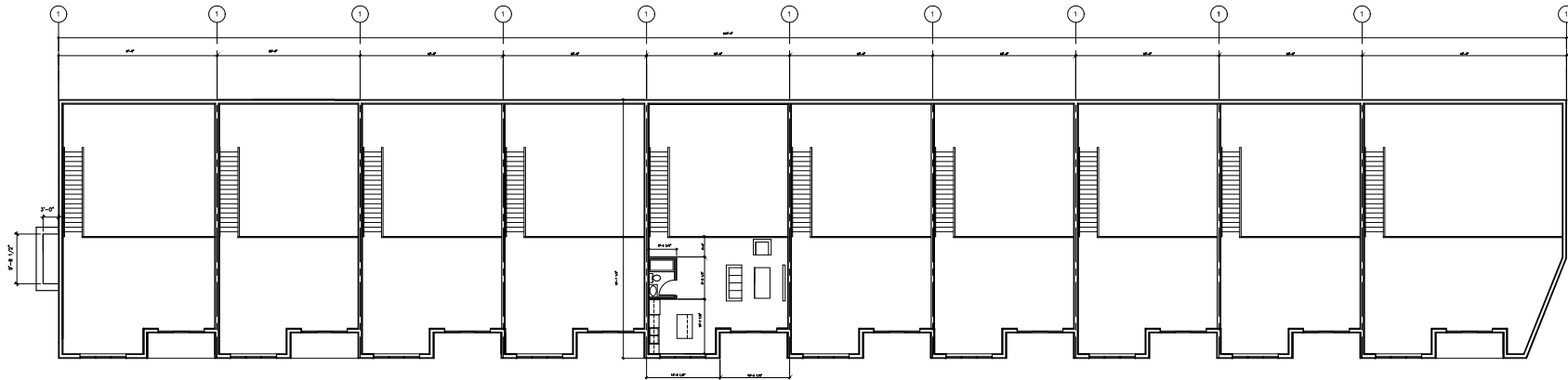


3 WEST ELEVATION SCHEME 3E  
SCALE: 3/32"=1'-0"

DATE	DESCRIPTION
7-10-20-2023	ADDED SOUTH ELEVATION
8-02-24-2024	PLAN COMMISSION
9-25-2023	PRELIMINARY ELEVATIONS 3E - REVISION #2
10-26-2023	PRELIMINARY ELEVATIONS 3E - REVISION #3
10-18-2023	PRELIMINARY ELEVATIONS 3E - 28' UNITS

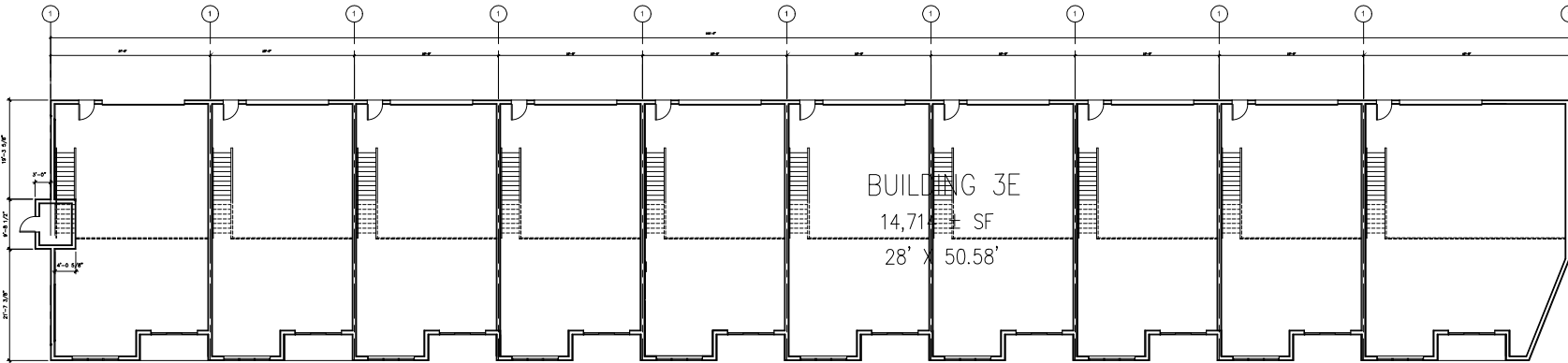
PROJECT NO. 23-STOR

ELEVATION  
3E



2 2 ND. FLOOR PLAN - 3E

SCALE: 3/32"=1'-0"



1 1 ST. FLOOR PLAN - 3E

SCALE: 3/32"=1'-0"

AURORA CORPORATE CENTER  
DEVELOPMENT COMPANY  
2228 FERRY ROAD  
NAPERVILLE, ILLINOIS

IRON GATE  
MOTOR PARK  
FERRY RD.  
NAPERVILLE, ILLINOIS

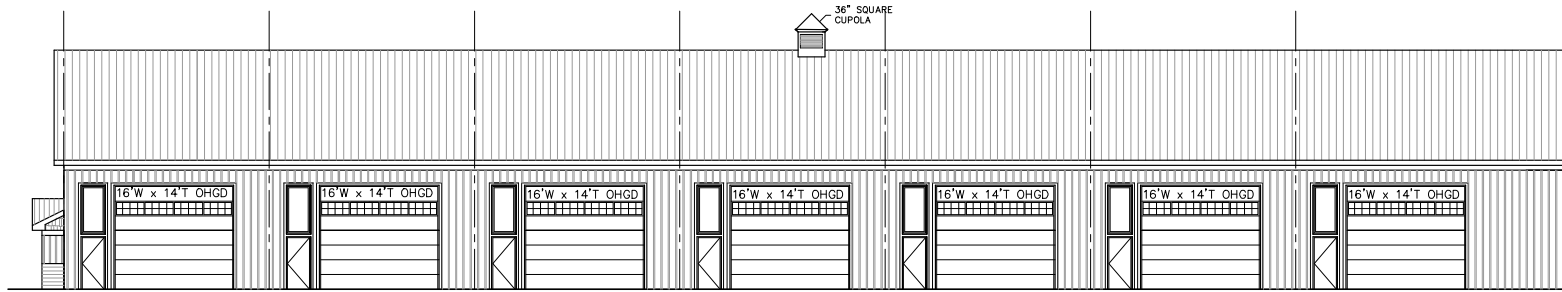
STEVEN W. HANSEN  
ARCHITECT  
890 Ironshore Ct  
SILGATE GROVE,  
IL. 60554  
630.466.6021

#	DATE	DESCRIPTION
1	10-24-2024	PLAN COMMISSION

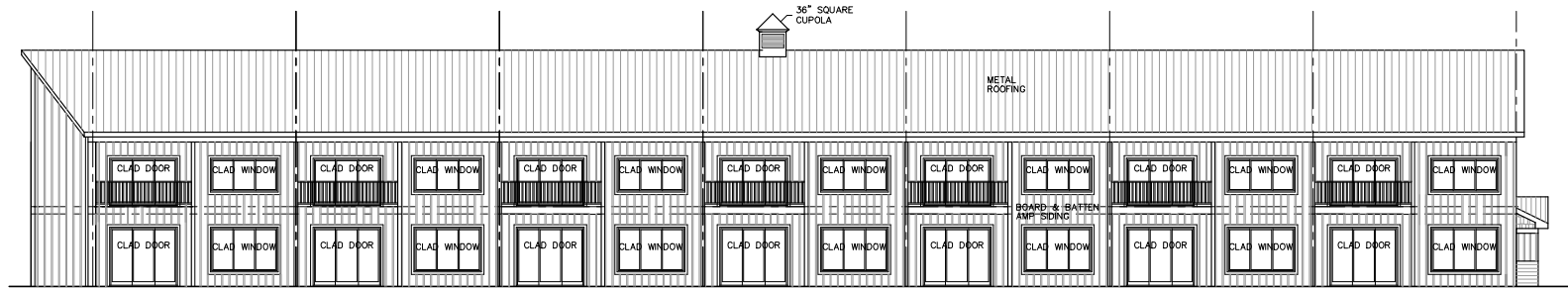
PROJECT NO. 23-STOR

FLOOR PLAN  
3E

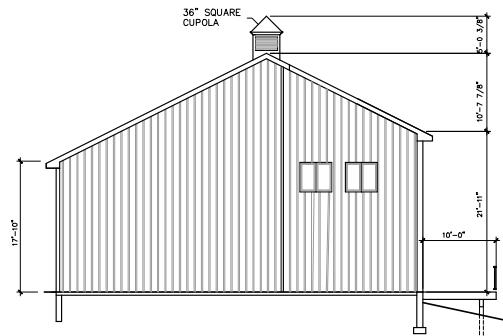
EXHIBIT E



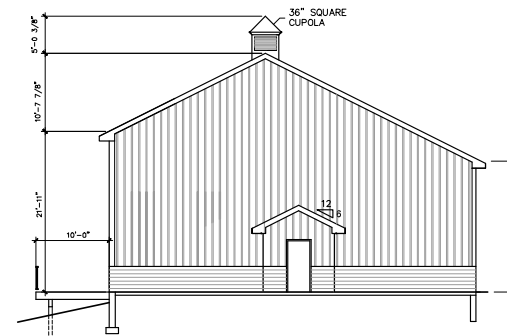
1 NORTHELEVATION SCHEME 3W  
SCALE: 1/8"=1'-0"



2 SOUTH ELEVATION SCHEME 3W  
SCALE: 1/8"=1'-0"



4 WEST ELEVATION SCHEME 3W  
SCALE: 1/8"=1'-0"



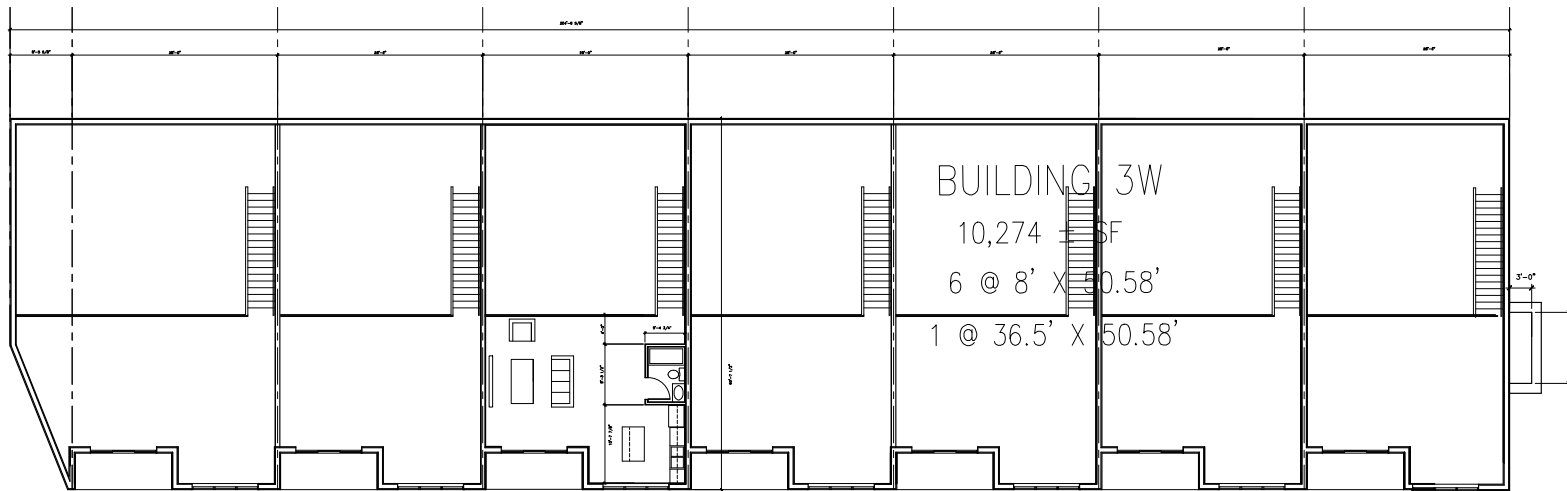
3 EAST ELEVATION SCHEME 3W  
SCALE: 1/8"=1'-0"

#	DATE	DESCRIPTION
1	10-18-2023	PRELIMINARY ELEVATION 3W
2	02-24-2024	PLAN COMMISSION
3	02-28-2024	PLAN COMMISSION

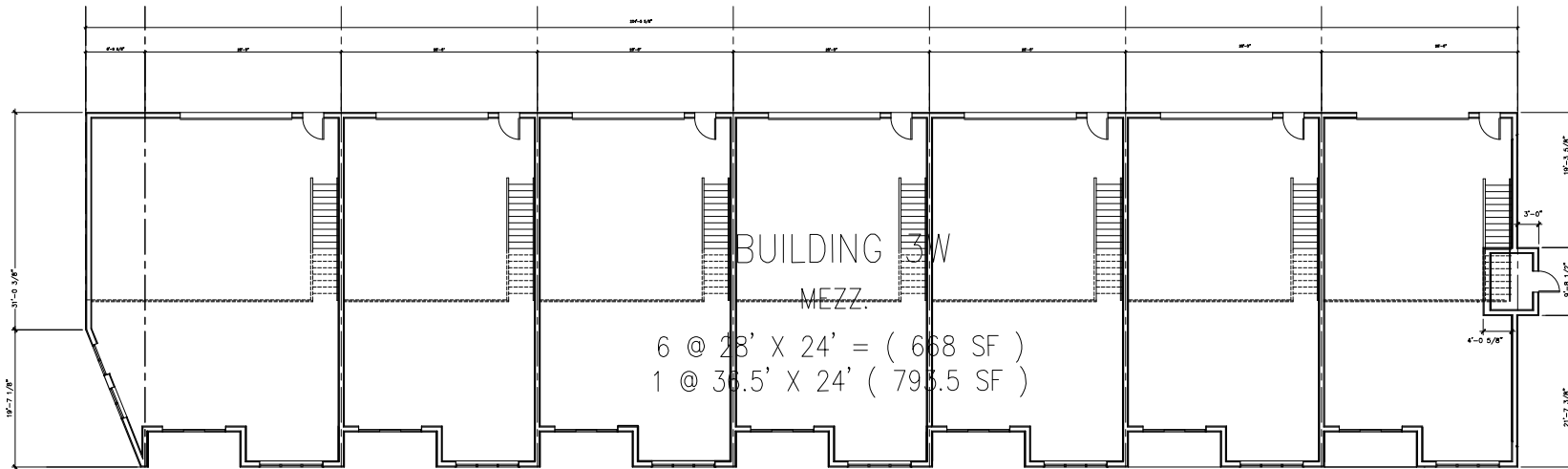
PROJECT NO. 23-STOR

ELEVATION  
3W

EXHIBIT E



1 2 ND. FLOOR PLAN - SCHEME 3W SCALE: 1/8"=1'-0"



2 1 ST. FLOOR PLAN - SCHEME 3W SCALE: 1/8"=1'-0"

AURORA CORPORATE CENTER  
 DEVELOPMENT COMPANY  
 2228 FERRY ROAD  
 NAPERVILLE, ILLINOIS

IRON GATE  
 MOTOR PARK  
 FERRY RD.  
 NAPERVILLE, ILLINOIS

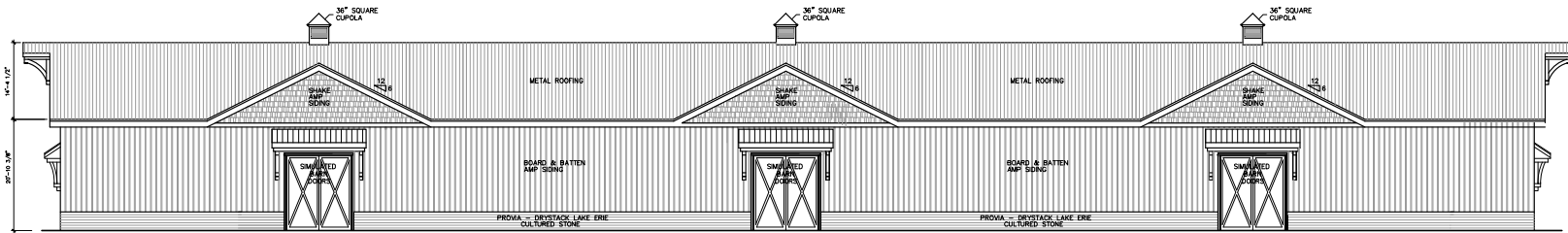
STEVEN W. HANSEN  
 ARCHITECT  
 800 LONGVIEW CT.  
 SILGATE GROVE, IL.  
 630.466.8021 - 60554

#	DATE	DESCRIPTION
1	10-10-2023	PRELIMINARY ELEVATION 3W
2	02-24-2024	PLAN COMMISSION
3	02-08-2024	PLAN COMMISSION

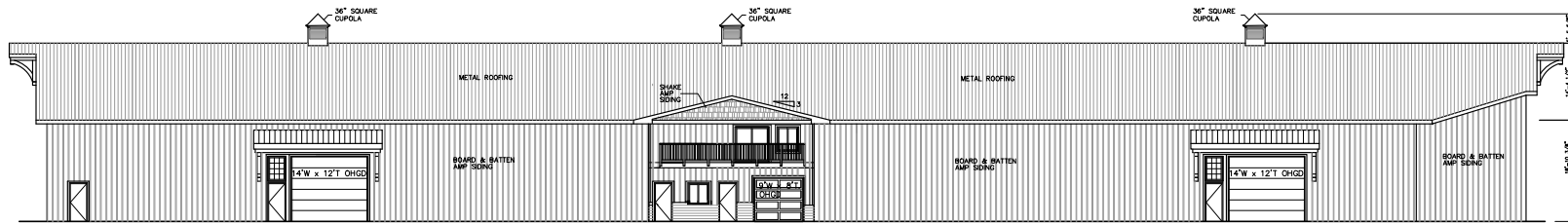
PROJECT NO. 23-STOR

FLOOR PLAN  
 3W

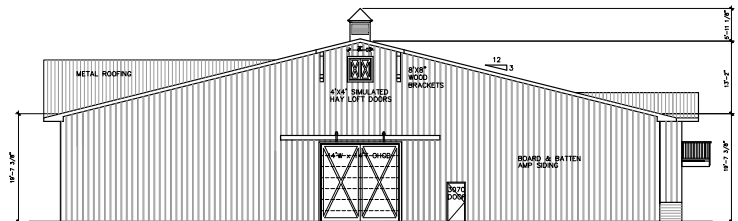
EXHIBIT E



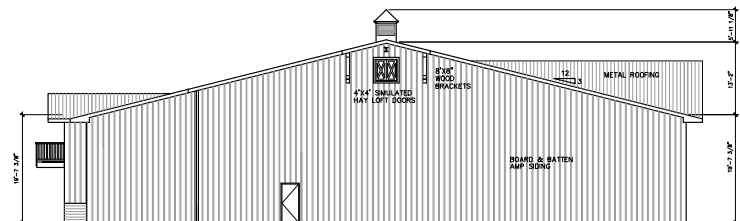
1 NORTH ELEVATION SCHEME 4E  
SCALE: 3/32"=1'-0"



2 SOUTH ELEVATION SCHEME 4E  
SCALE: 3/32"=1'-0"



4 WEST ELEVATION SCHEME  
SCALE: 3/32"=1'-0"



3 EAST ELEVATION SCHEME 4E  
SCALE: 3/32"=1'-0"

AURORA CORPORATE CENTER  
DEVELOPMENT COMPANY  
2228 FERRY ROAD  
NAPEVILLE, ILLINOIS

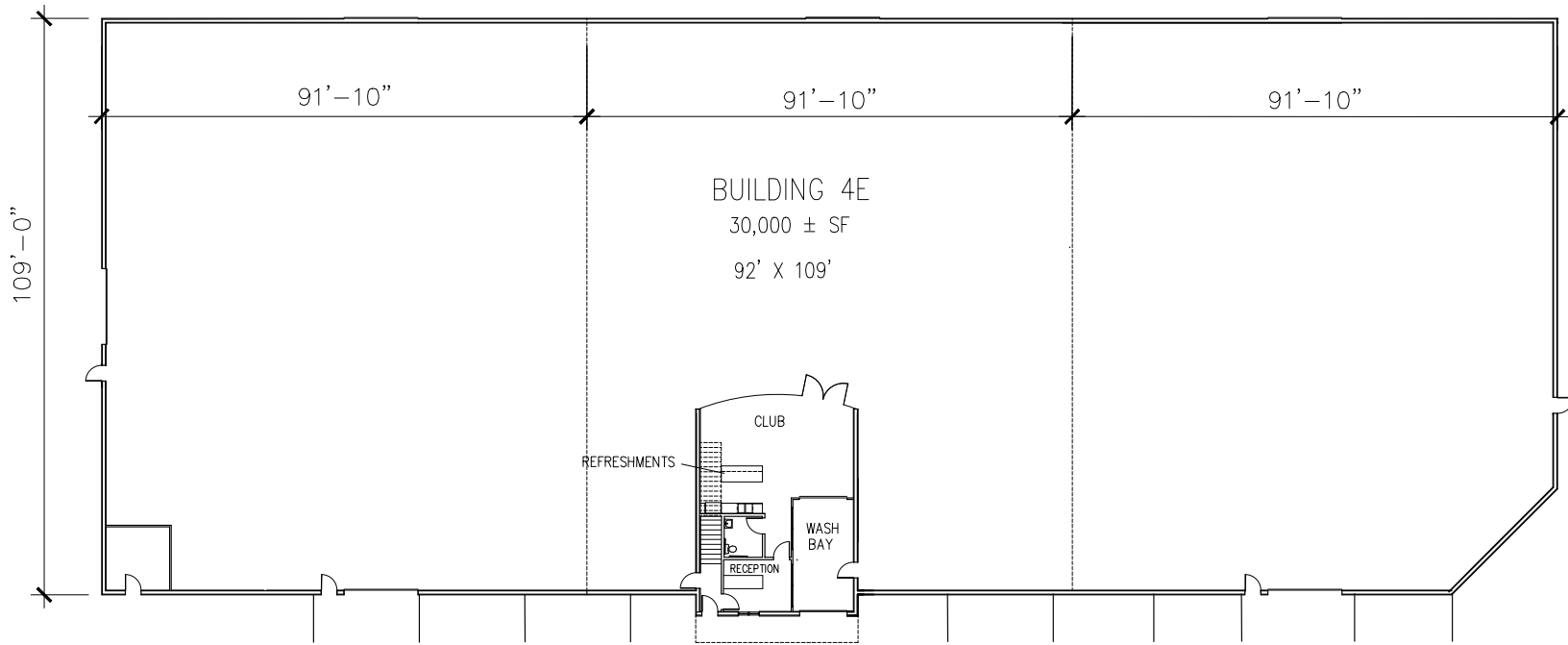
IRONGATE MOTOR PARK  
FERRY RD.  
NAPEVILLE, ILLINOIS

STEVEN W. HANSEN  
ARCHITECT  
800 LONGVIEW CT  
SILGATE GROVE, IL  
630.466.6021 - 60554

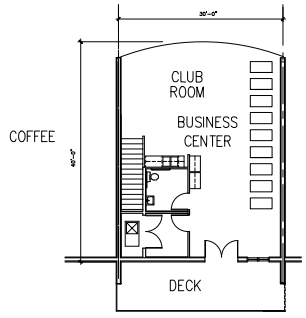
#	DATE	DESCRIPTION
1	9-16-2023	PRELIMINARY ELEVATIONS 4E
2	10-19-2023	PRELIMINARY ELEVATIONS 4E
3	11-16-2024	REVISE NORTH ELEVATION W/ CHANGES
4	12-19-2024	FINAL COMMISSION

PROJECT NO. 23-510R

ELEVATION  
4E



1 FIRST FLOOR PLAN SCHEME 4E SCALE: 1/32"=1'-0"



2 SECOND FLOOR PLAN SCHEME 4E SCALE: 1/32"=1'-0"

AURORA CORPORATE CENTER  
DEVELOPMENT COMPANY  
2228 FERRY ROAD  
NAPERVILLE, ILLINOIS

IRONGATE MOTOR PARK  
FERRY RD.  
NAPERVILLE, ILLINOIS

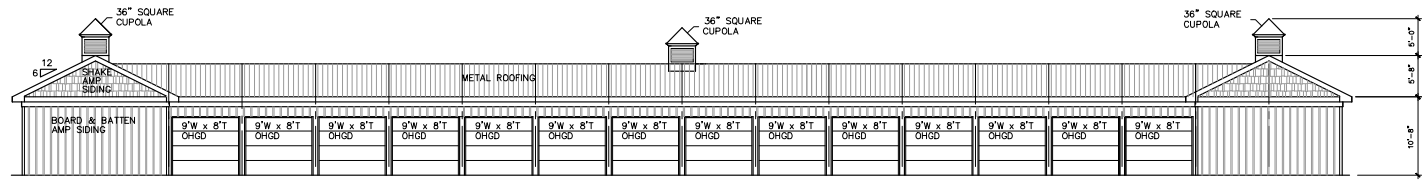
STEVEN W. HANSEN  
ARCHITECT  
890 LONGVIEW CT  
SILGATE GROVE,  
IL. 60554  
630.466.8021

#	DATE	DESCRIPTION
1	02-04-2024	PLAN COMMISSION
1	02-08-2024	PLAN COMMISSION

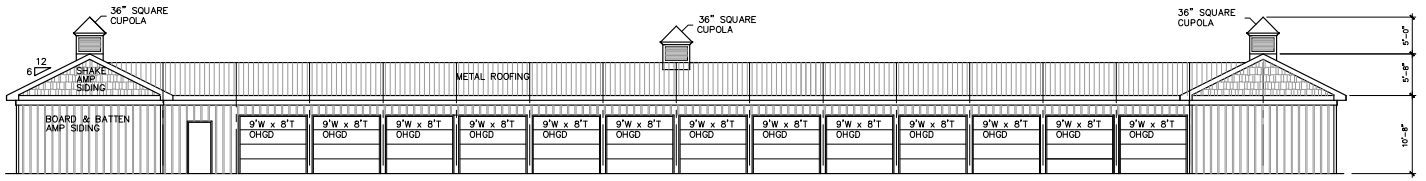
PROJECT NO. 23-STOR

FLOOR PLAN  
4E

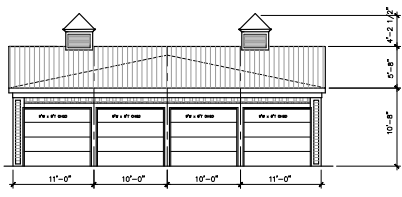
EXHIBIT E



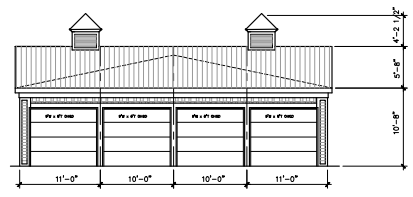
1 EAST ELEVATION SCHEME 4W  
SCALE: 1/8"=1'-0"



2 WEST ELEVATION SCHEME 4W  
SCALE: 1/8"=1'-0"



4 SOUTH ELEVATION SCHEME 4W  
SCALE: 1/8"=1'-0"



3 NORTH ELEVATION SCHEME 4W  
SCALE: 1/8"=1'-0"

AURORA CORPORATE CENTER  
DEVELOPMENT COMPANY  
2228 FERRY ROAD  
NAPERVILLE, ILLINOIS

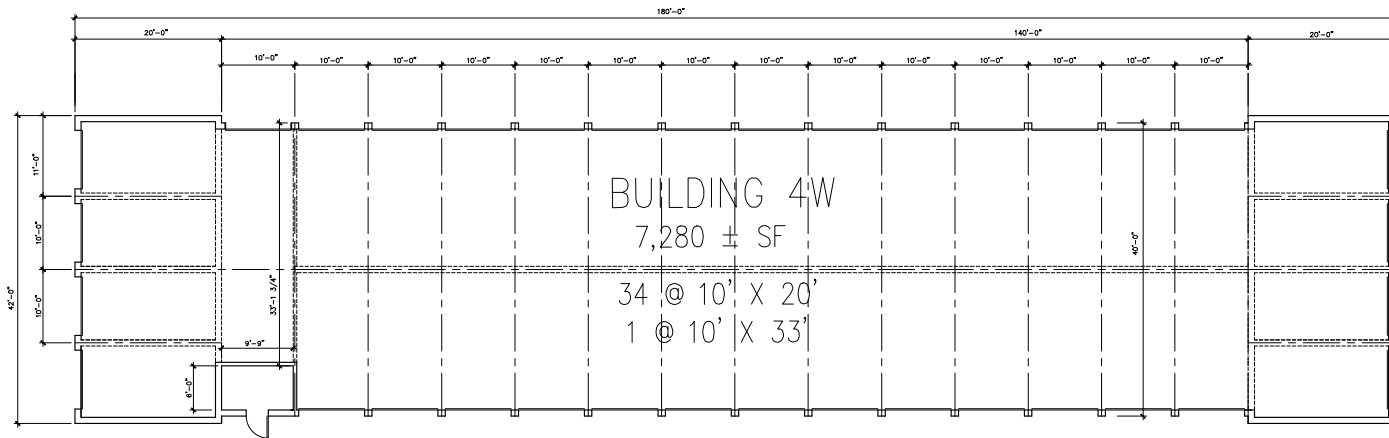
IRON GATE  
MOTOR PARK  
FERRY RD.  
NAPERVILLE, ILLINOIS

STEVEN W. HANSEN  
ARCHITECT  
800 LONGVIEW CT  
SILVER CROVE, IL  
630.466.6021 - 6054

#	DATE	DESCRIPTION
1	10-17-2023	PRELIMINARY ELEVATION 4W
2	9-20-2023	PRELIMINARY ELEVATION 4W
3	9-20-2023	PRELIMINARY ELEVATION 4W
4	9-20-2023	PRELIMINARY ELEVATION 4W
5	10-17-2023	PRELIMINARY ELEVATION 4W
6	10-17-2023	PRELIMINARY ELEVATION 4W

PROJECT NO. 23-STOR

ELEVATION  
4W



1 1 ST. FLOOR PLAN SCHEME 4W SCALE: 1/8"=1'-0"

AURORA CORPORATE CENTER  
DEVELOPMENT COMPANY  
2228 FERRY ROAD  
NAPERVILLE, ILLINOIS

IRON GATE  
MOTOR PARK  
FERRY RD.  
NAPERVILLE, ILLINOIS

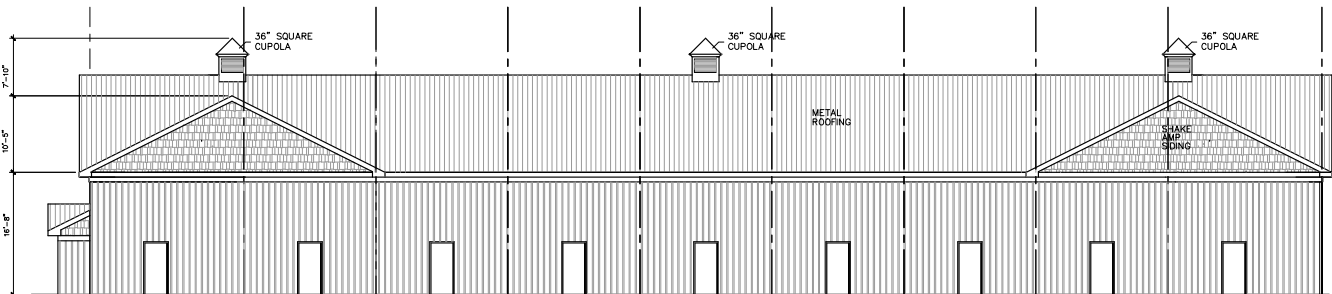
STEVEN W. HANSEN  
ARCHITECT  
890 LONGVIEW CT  
SILGATE GROVE, IL  
630.466.6021 - 60554

#	DATE	DESCRIPTION
1	02-04-2024	PLAN COMMISSION

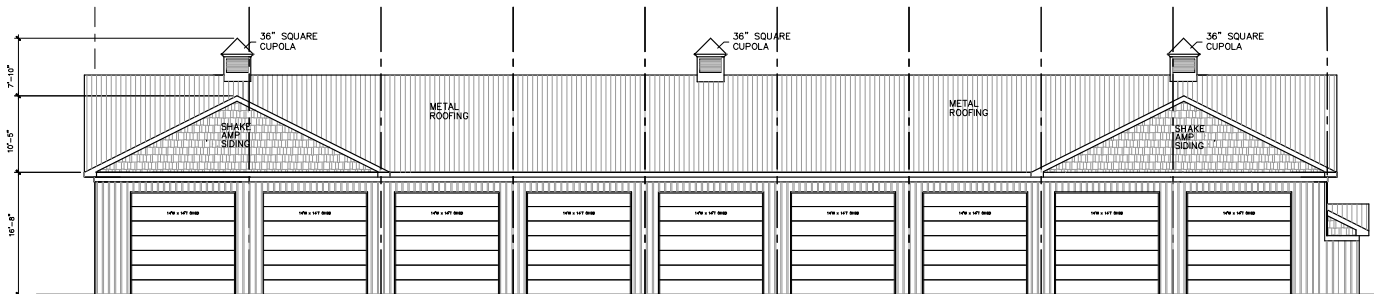
PROJECT NO. 23-STOR

FLOOR PLAN  
4W

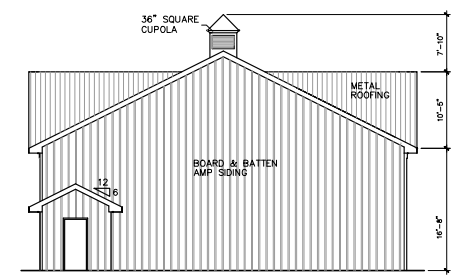




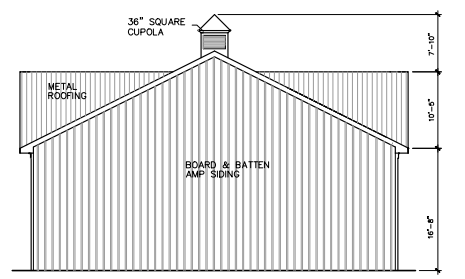
1 WEST ELEVATION SCHEME 5W  
SW SCALE: 1/8"=1'-0"



2 EAST ELEVATION SCHEME 5W  
SW SCALE: 1/8"=1'-0"



4 NORTH ELEVATION SCHEME 5W  
SW SCALE: 1/8"=1'-0"



3 SOUTH ELEVATION SCHEME 5W  
SW SCALE: 1/8"=1'-0"

AURORA CORPORATE CENTER  
DEVELOPMENT COMPANY  
2228 FERRY ROAD  
NAPERVILLE, ILLINOIS

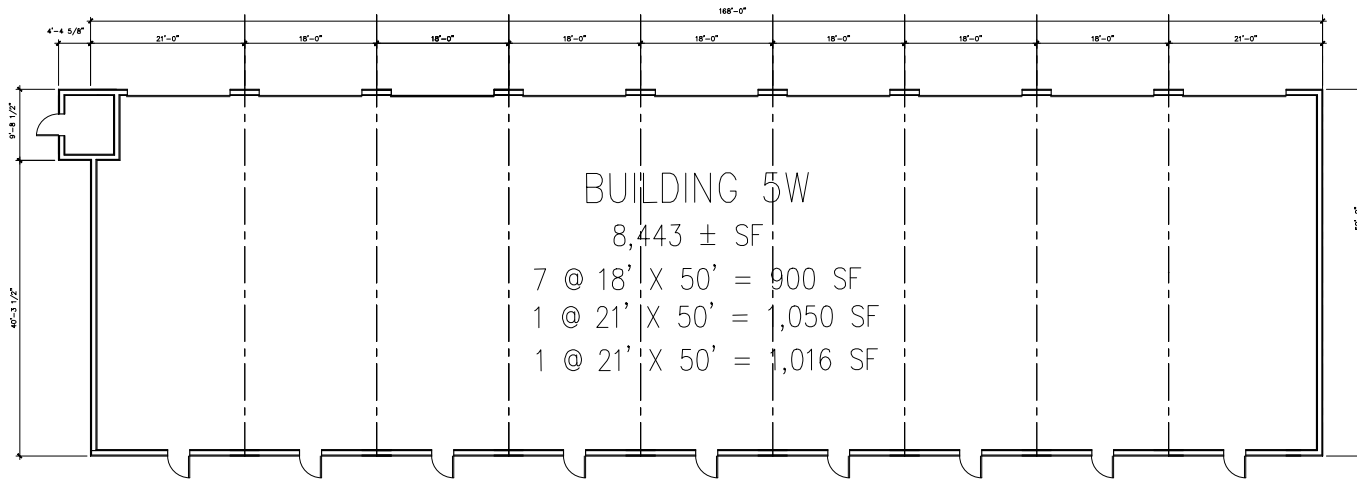
IRON GATE  
MOTOR PARK  
FERRY RD.  
NAPERVILLE, ILLINOIS

STEVEN W. HANSEN  
ARCHITECT  
800 LONGVIEW CT.  
SILVER GROVE, IL  
630.466.8021 - 60554

#	DATE	DESCRIPTION
1	10-17-2023	PRELIMINARY ELEVATION 5W
2	02-24-2024	PLAN COMMISSION

PROJECT NO. 23-STOR

FLOOR PLAN  
5W



BUILDING 5W

8,443 ± SF

7 @ 18' X 50' = 900 SF  
 1 @ 21' X 50' = 1,050 SF  
 1 @ 21' X 50' = 1,016 SF

1 FLOOR PLAN SCHEME 5W  
 SW SCALE: 1/8"=1'-0"

AURORA CORPORATE CENTER  
 DEVELOPMENT COMPANY  
 2228 FERRY ROAD  
 NAPERVILLE, ILLINOIS

IRON GATE  
 MOTOR PARK  
 FERRY RD.  
 NAPERVILLE, ILLINOIS

STEVEN W. HANSEN  
 ARCHITECT  
 890 LONGVIEW CT.  
 SUGAR GROVE, IL  
 630.466.6021 - 60554

#	DATE	DESCRIPTION
1	10-17-2023	PRELIMINARY ELEVATION 5W
2	02-24-2024	PLAN COMMISSION

PROJECT NO. 23-STOR

FLOOR PLAN  
 5W



EXHIBIT E

# Board & Batten

## Color Selection Tool

26 GAUGE



[centralstatesmfg.com](http://centralstatesmfg.com)

Copyright © 2023, Central States Manufacturing, Inc., All Rights Reserved.  
Galvalume® is a registered trademark of BECC International, Inc.  
Other colors are available for special order purchase. Please contact your salesperson for more information.  
Contact your sales person for accurate pricing. Longer lead times may apply. Texture panels must be installed in the same direction. See directional arrows or stickers provided on your panels. Color variation between orders is normal and not cause for rejection. Colors on this chart are close representations of actual metal color, limited by printing and viewing conditions. Color matching is optimized for outdoor viewing.

**SHERWIN-WILLIAMS.**  
Coil Coatings

- Basil Textured
- Roma Textured
- Sienna Textured
- Mineral Textured
- Onyx Textured
- Sumatra Textured
- Brilliant
- Gray
- Brown
- Rustic
- Colony
- Gallery



Dark Oak



Barnwood



Hickory



EXHIBIT E



Rustic Red Board & Batten metal panels

## Choose quality Central States metal for the best protection and a Lifetime warranty.

By choosing quality Central States metal you are making a purchase for the future. Our coatings recipe helps protect your investment from fading, rusting and gives excellent dent protection as well. The benefits of metal panels will also help you save money on utility bills and are environmentally friendly.

## Central States woodgrain panels provide a classic, refined siding option.

Central States woodgrain panels give your home, business or project similar advantages as painted panels but with a distinct natural look. Steel Board & Batten gives both homeowners and architects the ability to choose a superior performance siding option, eliminating the need for required regular maintenance while retaining its structural and aesthetic appearance.

	SMP AND TEXTURED	Woodgrain
<b>FADE PROTECTION</b>		
Paint Warranty	LIFETIME	20-YEAR
Paint Thickness	1.0 mil	Direct print
Fade Warranty	30-YEAR	20-YEAR
Fade Protection	✓	✓
<b>RUST BLOCKING</b>		
Advanced Rust Blocking	✓	✓
Perforation Warranty	20-YEAR	20-YEAR
Substrate Thickness	1.60 mil	1.60 mil
Substrate Coating	Galvalume	Galvalume
<b>DENT RESISTANCE</b>		
Advanced Dent Resistance	✓	✓
Steel Gauge	26 ga.	26 ga.

### Board & Batten



[centralstatesmfg.com](http://centralstatesmfg.com)

EXHIBIT E

Copyright © 2023, Central States Manufacturing, Inc., All Rights Reserved.  
CentralGuard® is a trademark of Central States® Manufacturing, Inc.  
Galvalume® is a registered trademark of BIEC International, Inc.



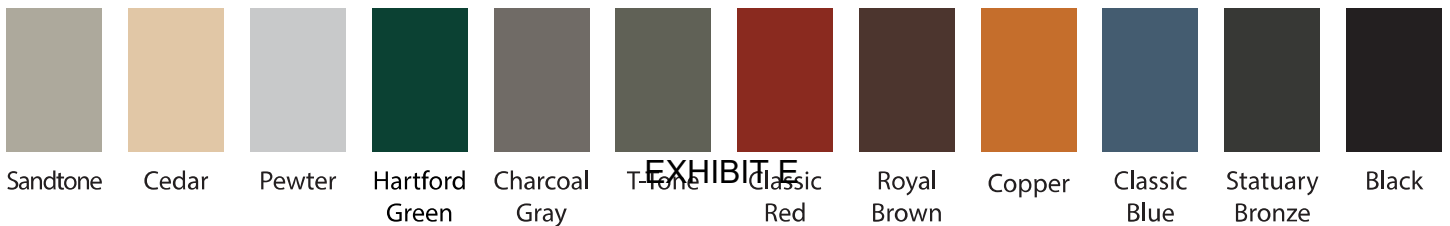
EXHIBIT E

# ArrowLine® Shake



ArrowLine® Shake in  
Royal Brown

## Solid Colors Available





## The **Striking Appearance** of Hand-Split Shakes Delivers **Timeless Style.**

Enhance the beauty of your home with ArrowLine® Shake. The craftsmanship of natural, hand-split cedar shakes is achieved with the added strength of metal.

With a wide variety of solid and enhanced colors, the architectural detail of ArrowLine® Shake provides timeless style while protecting the beauty of your home or business with its 30-year fade protection.



Hartford Green  
Blend



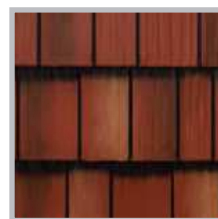
Charcoal Gray  
Blend



Royal Brown  
Blend



Statuary Bronze  
Blend



Classic Red  
Blend



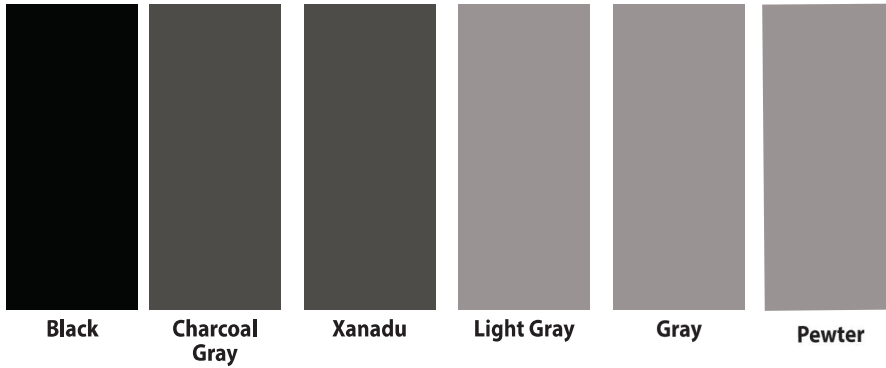
T-Tone  
Blend

EDCO solid roofing colors meet or exceed ENERGY STAR® standards, which can reduce your energy costs.

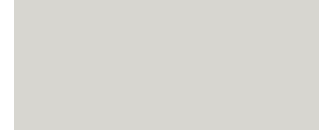
**NOTE:** All colors shown are as accurate as possible. Please refer to actual color chip samples before making your final selection.

EXHIBIT E





Alamo



Brilliant



Hunter



Forest



Colony



Deep Red



Rustic



Burgundy



Cobalt

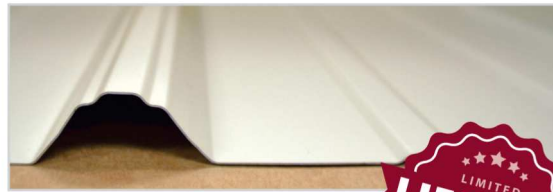


Ocean



# Panel-Loc Plus™

Prime G90 Color Selection Tool



**SHERWIN-WILLIAMS**  
Coil Coatings



Choose CentralGuard for the best protection and a lifetime warranty.

\*Copper Metallic panels must be installed in the same direction. See directional arrows or stickers provided on your panels. Contact your salesperson for accurate pricing. † Color variation between orders is normal and not cause for rejection. ‡ Weathering and appearance variation, including color, sheen, and spangle, is common in non-painted materials and is not a cause for rejection. For consistent appearance, choose a paint-finished product.

Colors on this chart are close representations of actual metal color, limited by printing and viewing conditions. Color matching optimized for outdoor viewing.



Copper Metallic\*†



Desert



Hickory Moss



Taupe



Umber

Brown



Dark Brown



Prairie



Light Stone



Sierra



Ivory



EXHIBIT E

# Choose CentralGuard® for the best protection and a lifetime warranty.

The CentralGuard paint system is our specific combination of everything that goes into making the highest-quality metal panels. The CentralGuard name guarantees you have the best protection and a lifetime paint warranty.

Choose CentralGuard for the perfect balance of fade protection, rust blocking, and dent resistance.



**OUR BEST SELLER!**

## PRIMEG90 CentralGuard

### LONG LASTING FINISH

Paint Warranty	<b>LIFETIME</b>
Paint Thickness	1.0 mil
Fade Warranty	35-YEAR
Advanced Fade Protection	YES
Chalking Warranty	35-YEAR

### RUST BLOCKING

Advanced Rust Blocking	YES
Perforation Warranty	30-YEAR SIDE 25-YEAR ROOF
Substrate Thickness	1.53 mil
Substrate Coating	G90 Galvanized
Edge Rust Warranty	15-YEAR

### DENT RESISTANCE

Advanced Dent Resistance	YES
Structural Grade Steel	100,000 PSI* NOMINAL
Steel Gauge	29 ga.

\*Per ASTM 792 with industry tolerances.

Panel-Loc Plus features UL2218 approval for impact resistance and may qualify for a homeowners insurance discount. See your local insurance agent for qualifications.

### Panel-Loc Plus™



clearybuilding.com



centralstatesmfg.com

*built with pride before the  is applied®*

Copyright © 2023, Central States Manufacturing, Inc., All Rights Reserved. • CentralGuard® is a trademark of Central States® Manufacturing, Inc.

CHRT\_PLPG90L\_CLEARY\_230919