

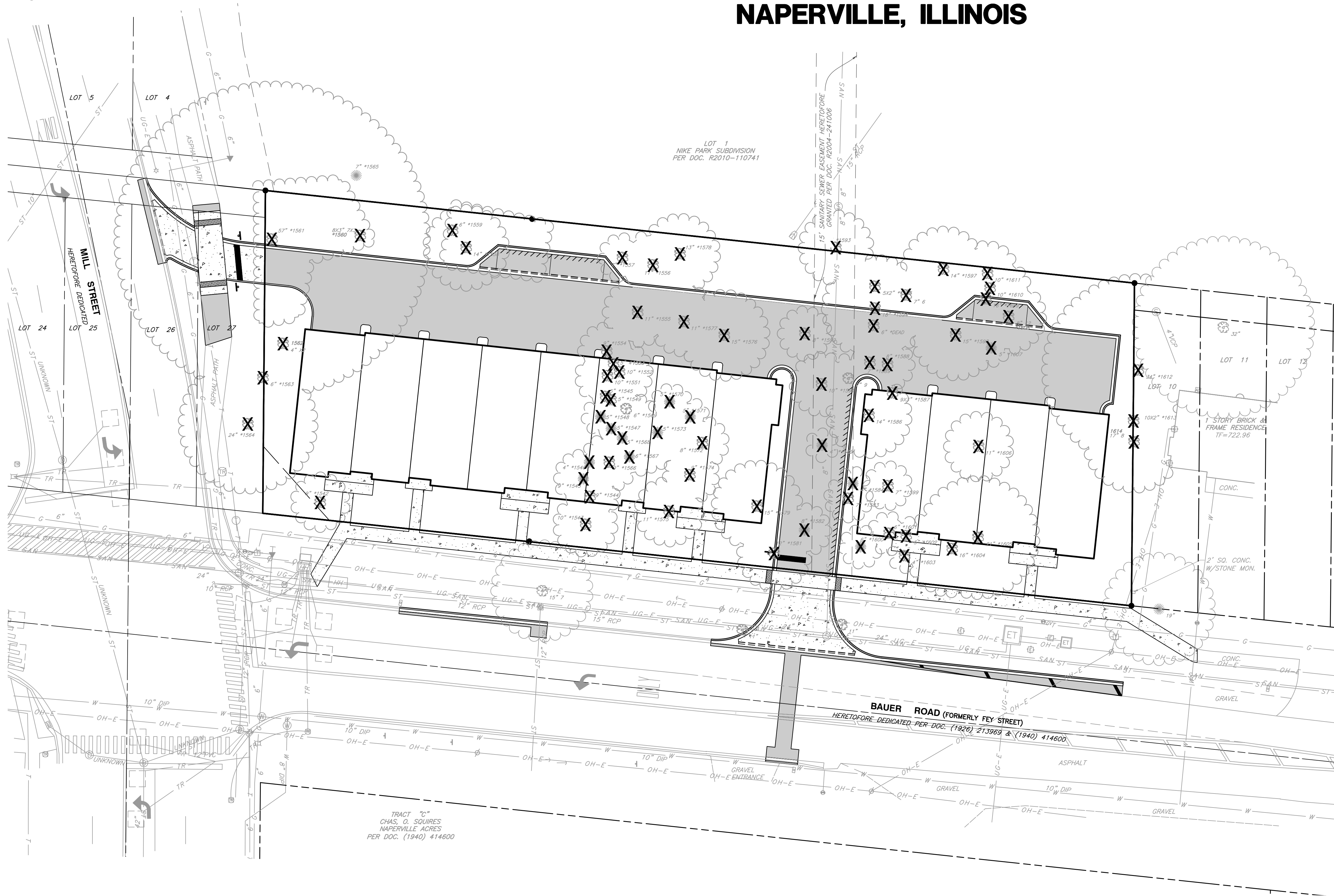
NORTH

BASIS OF BEARINGS:
NSRS (2011) ILLINOIS STATE
PLANE - EAST ZONE

TREE INVENTORY PLAN

MILL AND BAUER TOWNHOMES

NAPERVILLE, ILLINOIS



NUMBER	BOTANICAL NAME	COMMON NAME	SIZE	CONDITION	ACTION
1542	Pyrus	Pear	9"	3	Remove
1543	Pyrus	Pear	10"	3	Remove
1544	Pyrus	Pear	9"	4	Remove
1545	Prunus serotina	Black Cherry	9"	4	Remove
1546	Juniperus virginiana	Red Cedar	4"	4	Remove
1547	Juniperus virginiana	Red Cedar	5"	4	Remove
1548	Juniperus virginiana	Red Cedar	5"	4	Remove
1549	Acer saccharinum	Silver Maple	5"	5	Remove
1550	Acer saccharinum	Silver Maple	5"	5	Remove
1551	Acer saccharinum	Silver Maple	10"	4	Remove
1552	Acer saccharinum	Silver Maple	10"	5	Remove
1553	Acer saccharinum	Silver Maple	5"	5	Remove
1554	Juglans nigra	Black Walnut	9"	4	Remove
1555	Juglans nigra	Black Walnut	11"	4	Remove
1556	Juglans nigra	Black Walnut	11"	3	Remove
1557	Prunus serotina	Black Cherry	7"	4	Remove
1558	Morus alba	Common Mulberry	14"	5	Remove
1559	Prunus serotina	Black Cherry	6"	5	Remove
1560	Betula papyrifera	White Birch	8x3"	4	Remove
1561	Acer saccharinum	Silver Maple	5"	3	Remove
1562	Prunus serotina	Black Cherry	2x4"	5	Remove
1563	Quercus Rubra	Red Oak	6"	3	Remove
1564	Juglans nigra	Black Walnut	24"	4	Remove
1565	Not Used				
1566	Pyrus	Pear	9"	3	Remove
1567	Juniperus virginiana	Red Cedar	6"	4	Remove
1568	Juniperus virginiana	Red Cedar	5"	4	Remove
1569	Pyrus	Pear	6"	4	Remove
1570	Juniperus virginiana	Red Cedar	5"	4	Remove
1571	Juniperus virginiana	Red Cedar	5"	4	Remove
1572	Juglans nigra	Black Walnut	8"	4	Remove
1573	Juniperus virginiana	Red Cedar	5"	4	Remove
1574	Juglans nigra	Black Walnut	9"	4	Remove
1575	Juglans nigra	Black Walnut	11"	4	Remove
1576	Juglans nigra	Black Walnut	15"	4	Remove
1577	Juglans nigra	Black Walnut	11"	3	Remove
1578	Juglans nigra	Black Walnut	13"	4	Remove
1579	Juglans nigra	Black Walnut	15"	4	Remove
1580	Dead				Remove
1581	Juglans nigra	Black Walnut	12"	3	Remove
1582	Juniperus virginiana	Red Cedar	8"	3	Remove
1583	Juglans nigra	Black Walnut	7"	4	Remove
1584	Juniperus virginiana	Red Cedar	4"	4	Remove
1585	Juniperus virginiana	Red Cedar	4"	3	Remove
1586	Gleditsia triacanthos var. inermis	Honeylocust	14"	4	Remove
1587	Acer saccharinum	Silver Maple	9x3"	5	Remove
1588	Dead		8"	5	Remove
1589	Gleditsia triacanthos var. inermis	Honeylocust	7"	4	Remove
1590	Ulmus (sp)	Elm (sp)	7"	4	Remove
1591	Ulmus (sp)	Elm (sp)	10"	4	Remove
1592	Juglans nigra	Black Walnut	8"	3	Remove
1593	Malus (sp)	Crab Apple	12"	5	Remove
1594	Gleditsia triacanthos var. inermis	Honeylocust	18"	4	Remove
1595	Dead		5x2"	5	Remove
1596	Acer saccharinum	Silver Maple	7"	5	Remove
1597	Prunus serotina	Black Cherry	14"	5	Remove
1598	Juglans nigra	Black Walnut	15"	3	Remove
1599	Gleditsia triacanthos var. inermis	Honeylocust	7"	4	Remove
1600	Juniperus virginiana	Red Cedar	6"	4	Remove
1601	Ulmus (sp)	Elm (sp)	6"	4	Remove
1602	Ulmus (sp)	Elm (sp)	5"	4	Remove
1603	Ulmus (sp)	Elm (sp)	4"	4	Remove
1604	Juglans nigra	Black Walnut	16"	4	Remove
1605	Acer negundo	Boxelder	21"	5	Remove
1606	Juglans nigra	Black Walnut	11"	5	Remove
1607	Juniperus virginiana	Red Cedar	5"	4	Remove
1608	Morus alba	Common Mulberry	8"-12"	5	Remove
1609	Prunus serotina	Black Cherry	16"	4	Remove
1610	Prunus serotina	Black Cherry	10"	5	Remove
1611	Populus deltoides	Eastern Cottonwood	10"	4	Remove
1612	Acer saccharinum	Silver Maple	34"	3	Remove
1613	Betula nigra	River Birch	10x2"	4	Remove
1614	Betula nigra	River Birch	8"-17"	3	Remove

LEGEND

- PROPOSED SUBDIVISION BOUNDARY
- - - EXISTING LOT LINE
- EXISTING CENTER LINE
- X TREE TO BE REMOVED

TREE CONDITION LEGEND

- 1 = EXCELLENT
- 2 = GOOD
- 3 = FAIR
- 4 = POOR
- 5 = UNDESIRABLE OR DEAD

REFERENCE

- EXISTING CONDITIONS ARE BASED UPON FIELD OBSERVATIONS MADE ON OCTOBER 31, 2022 BY CIVIL & ENVIRONMENTAL CONSULTANTS, INC.
- FIELD DATUM: ILLINOIS STATE PLANE NSRS 2011, EAST ZONE- US SURVEY FOOT CITY OF NAPERVILLE DATUM NAVD 88.
- UNDERGROUND UTILITY INFORMATION SHOWN HEREON IS BASED UPON FIELD OBSERVATIONS, ATLAS MAPS PROVIDED BY THE CITY OF NAPERVILLE AND THOSE PUBLIC UTILITY COMPANIES OPERATING UNDER FRANCHISE OR CONTRACT WITH THE CITY OF NAPERVILLE.

REVISION RECORD

NO. DATE DESCRIPTION

Civil & Environmental Consultants, Inc.
1230 East Diehl Road, Suite 200 - Naperville, IL 60563
630-963-6026 - 877-963-6026
www.cecinc.com

MILL AND BAUER, LLC
MILL AND BAUER TOWNHOMES
27W280 BAUER ROAD
NAPERVILLE, ILLINOIS 60563

TREE INVENTORY PLAN

DATE: JANUARY 16, 2023 DRAWN BY: MAJ
DWG SCALE: 1" = 20' CHECKED BY: JGC
PROJECT NO.: 326-656.0002
APPROVED BY: JGC

DRAWING NO.:

LS02

SCALE IN FEET
0 20 40

SHEET 1 OF 1

A:\300-0001\326-6561-0002\Draw\DWG\326-6561-0002-Tree Inventory Plan.dwg(3/11/23) 1:19/2023 - mjm/tyl - LP: 1/19/2023 5:54 AM