

The garage is 22'4" from the top of the foundation to the roof peak.

If you include the foundation at the front, which is 1'6", the overall height will be 23'10".

Matt Crary

**EXHIBIT C**

Sheet #

**2**

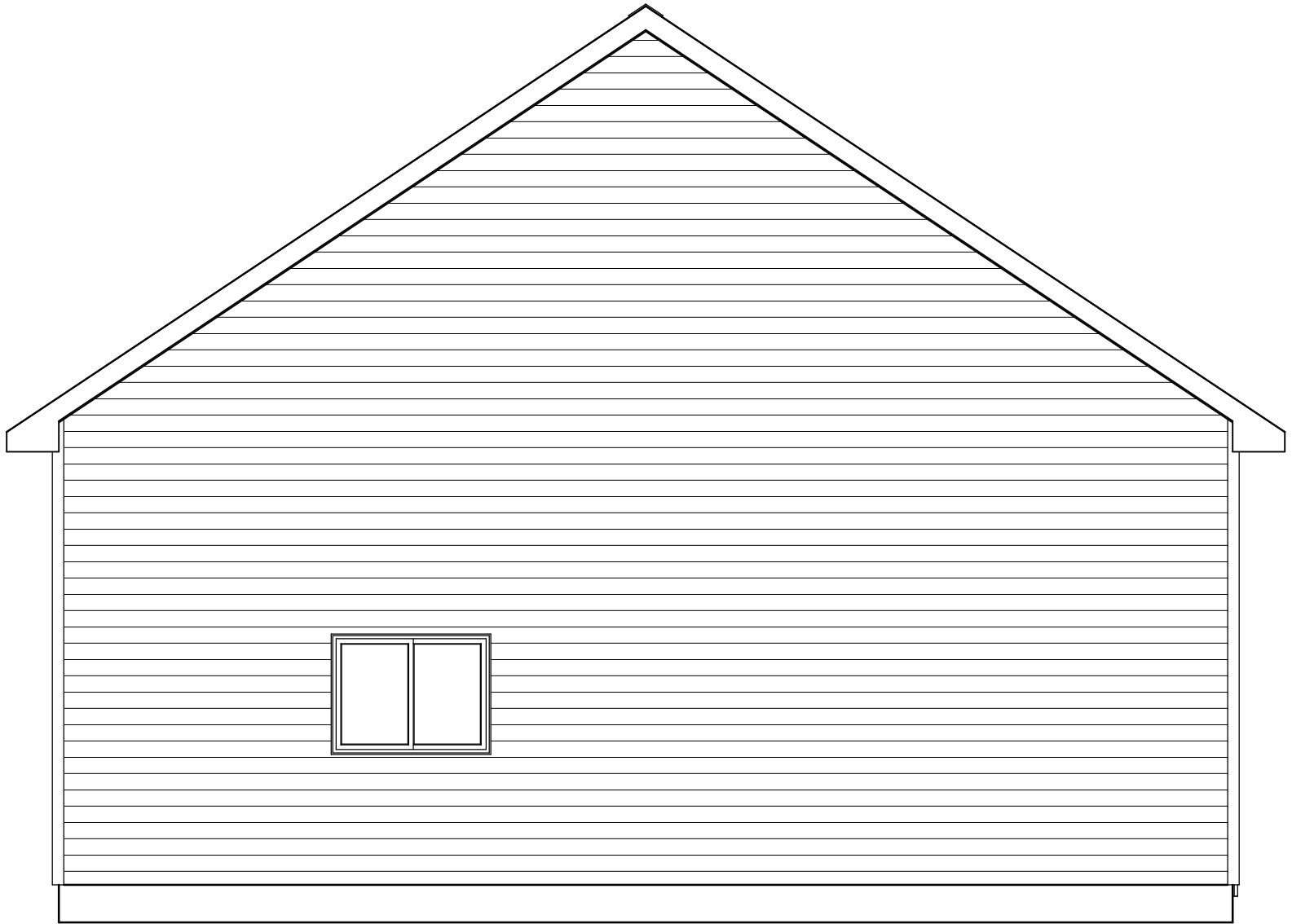
Scale: 1/4"=1'

Date: 10/23/2024

Drawing By:  
Coach House Garages



700 Mill St.  
Arthur IL 61911  
Phone-217-543-3761  
FAX-217-543-3350



Matt Crary

EXHIBIT C

Sheet #

3

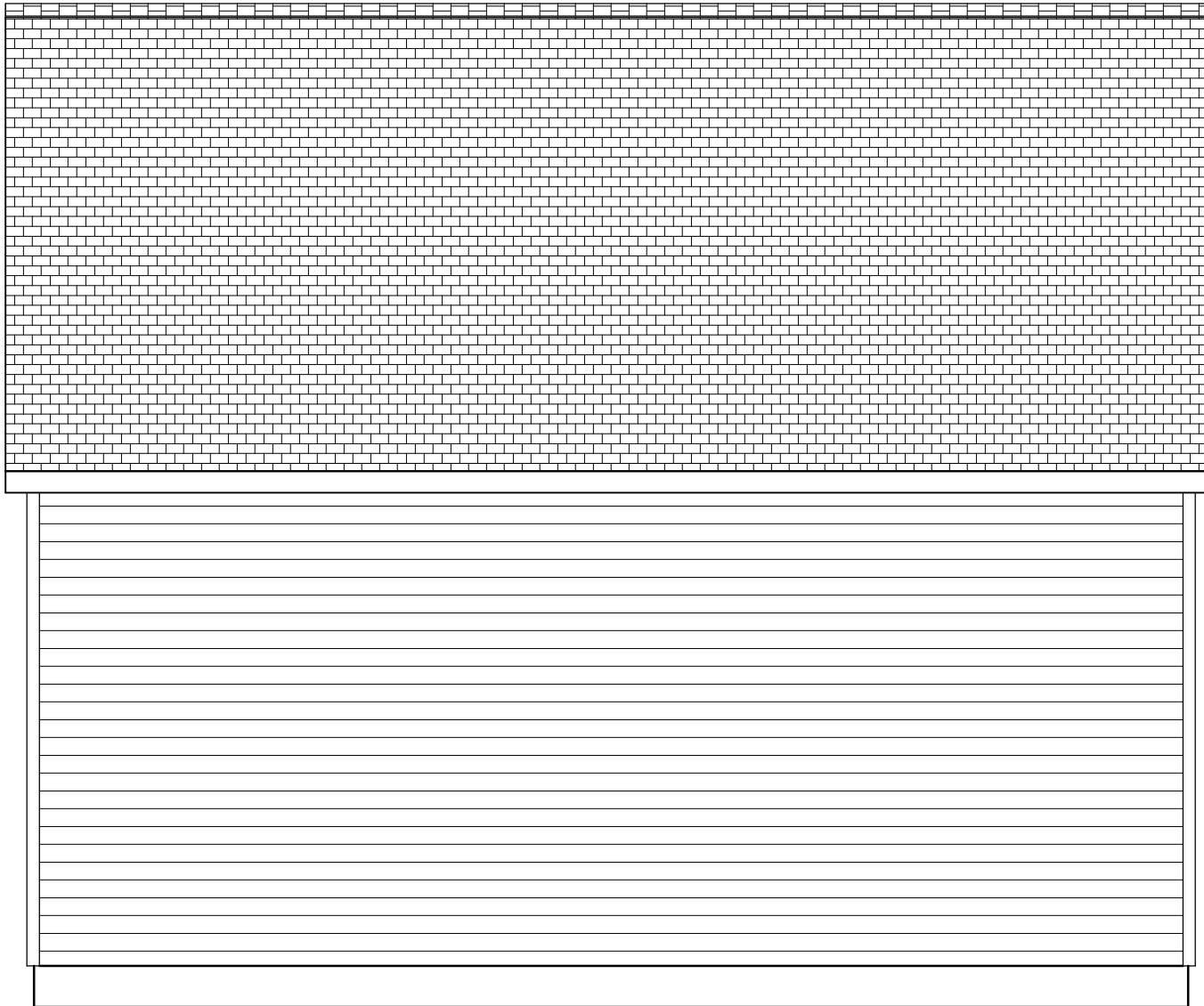
Scale: 1/4"=1'

Date: 10/23/2024

Drawing By:  
Coach House Garages



700 Mill St.  
Arthur IL 61911  
Phone-217-543-3761  
FAX-217-543-3350



Matt Crary

**EXHIBIT C**

Sheet #

**4**

Scale: 1/4"=1'

Date: 10/23/2024

Drawing By:  
Coach House Garages



700 Mill St.

Arthur IL 61911

Phone-217-543-3761

FAX-217-543-3350



**EXHIBIT C**

*Matt Crary*

Sheet #  
**5**

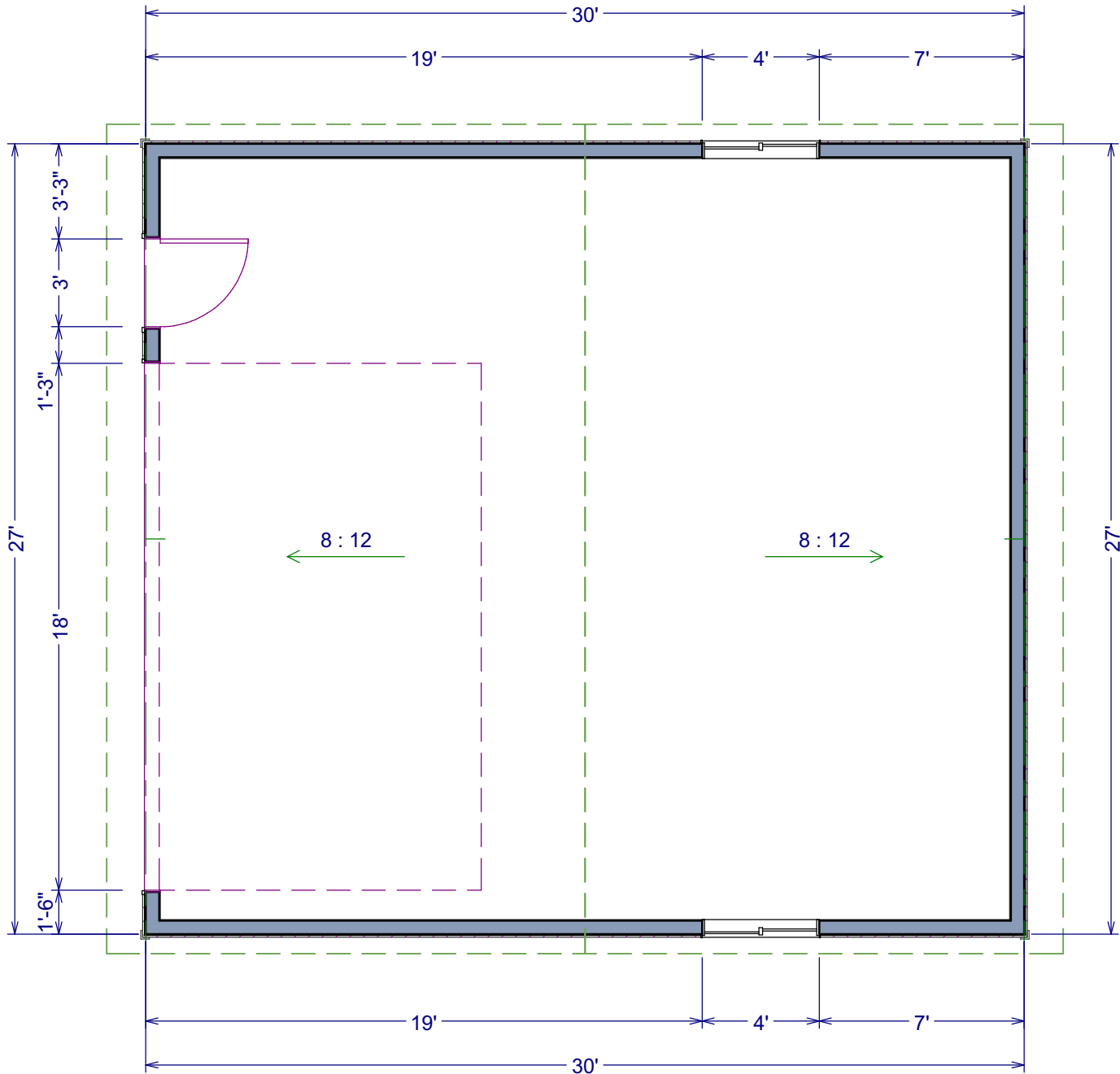
Scale: 1/4"=1'

Date: 10/23/2024

Drawing By:  
Coach House Garages



700 Mill St.  
Arthur IL 61911  
Phone-217-543-3761  
FAX-217-543-3350



Matt Crary

**EXHIBIT C**

Sheet #

**1**

Scale: 3/16"=1'

Date: 10/23/2024

Drawing By:  
Coach House Garages



700 Mill St.  
Arthur IL 61911  
Phone-217-543-3761  
FAX-217-543-3350