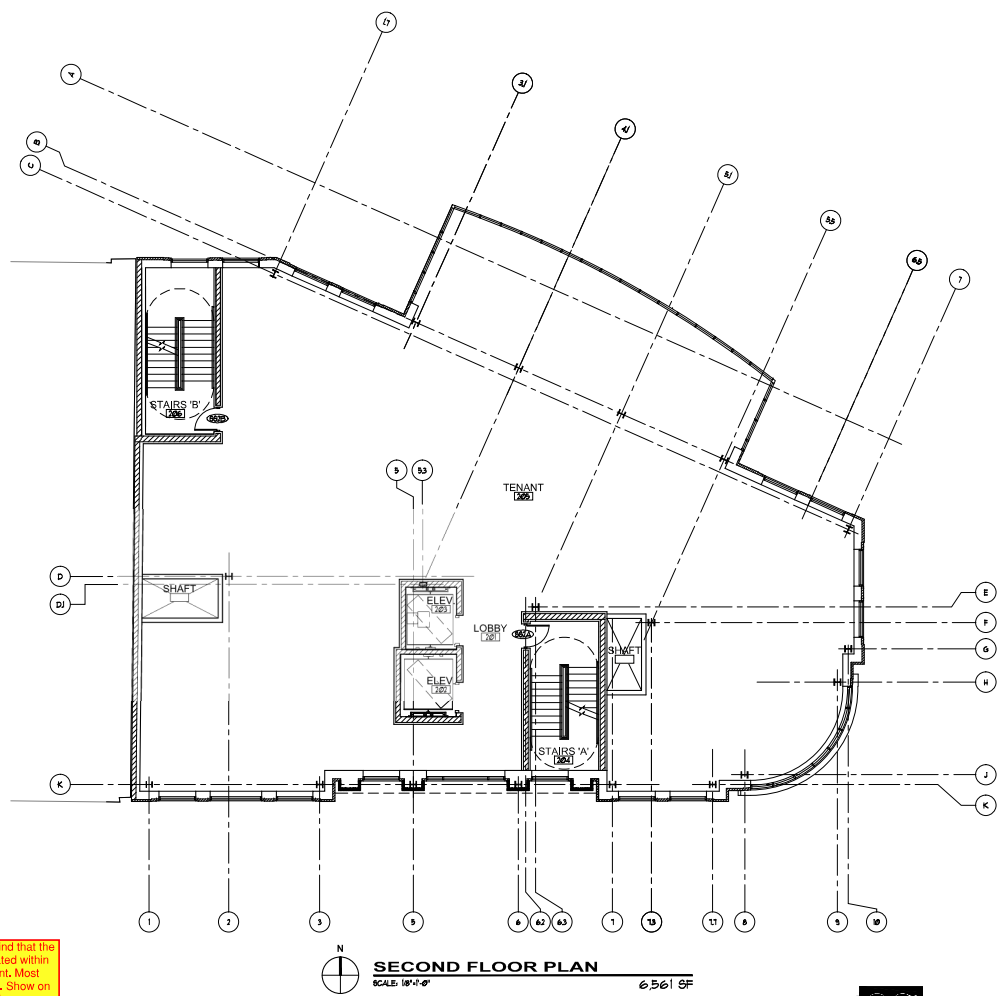
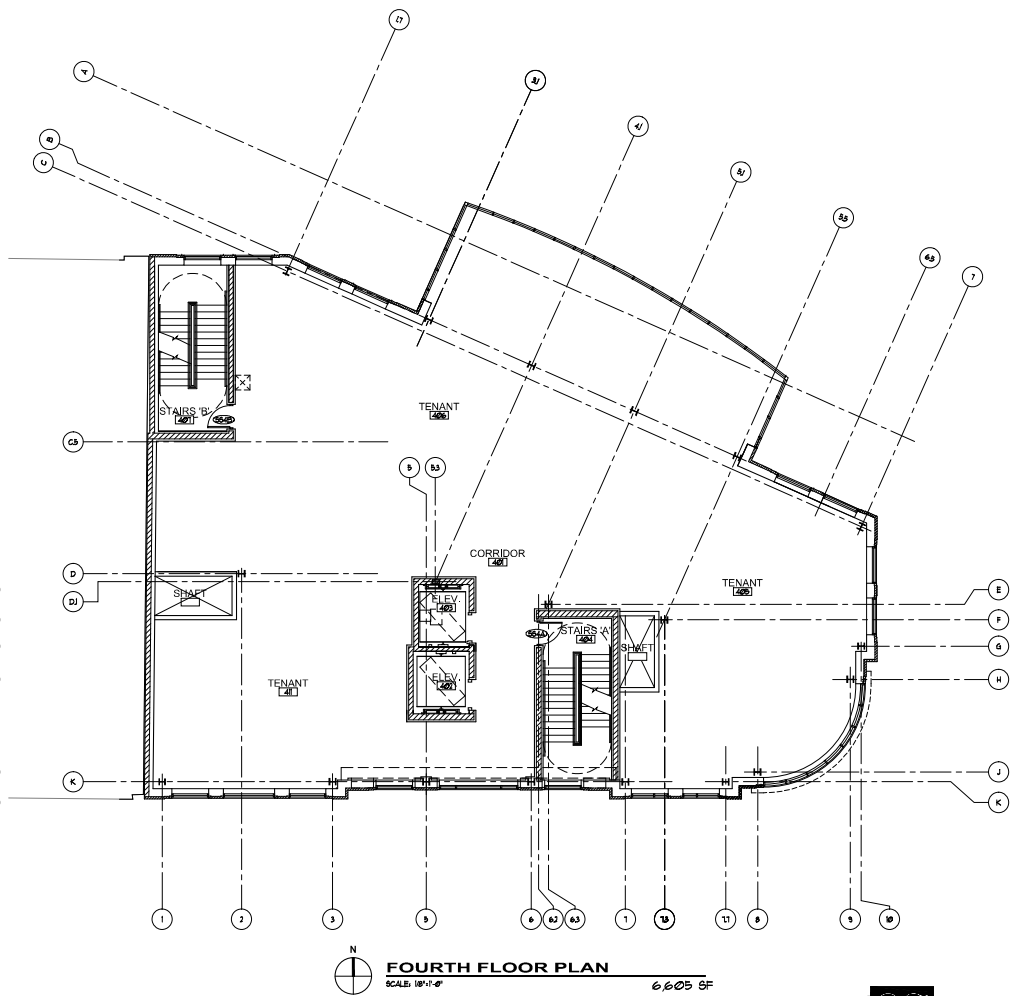
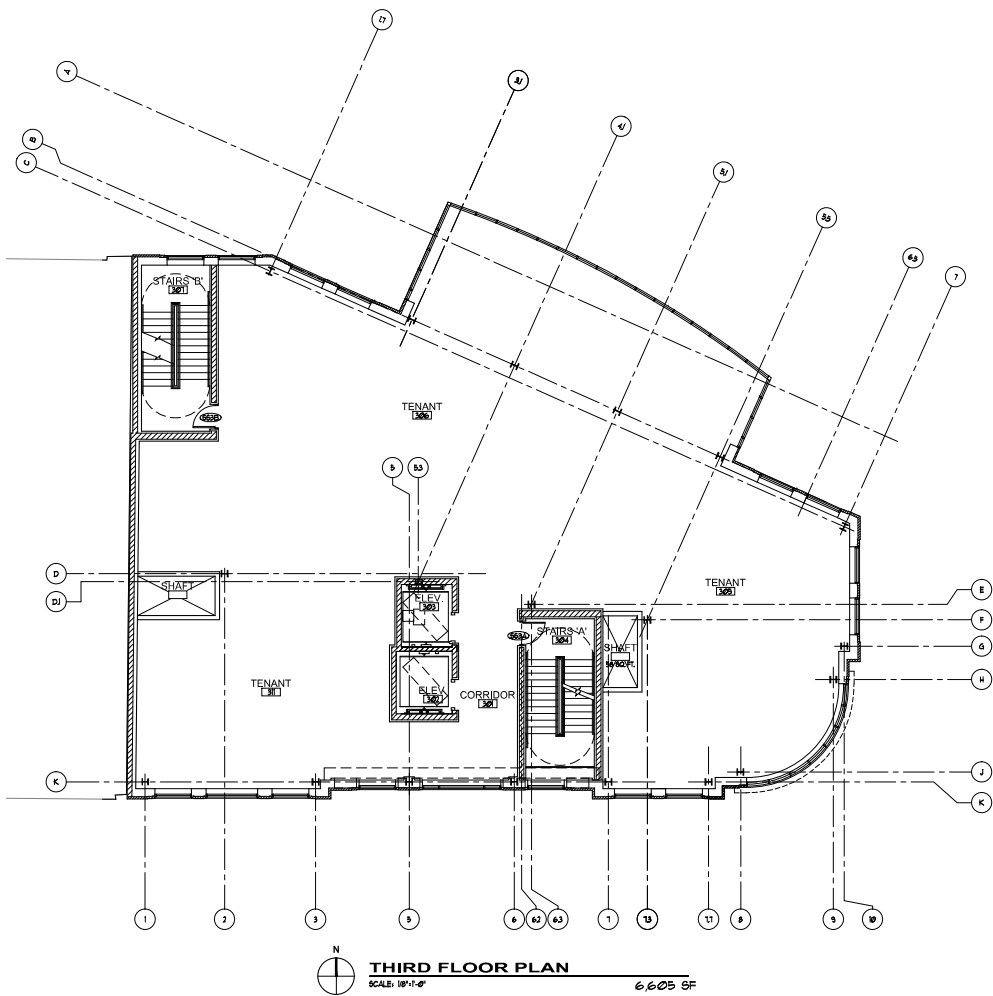


Please keep in mind that the FDC shall be located within 50' of a fire hydrant. Most likely on Water St. Show on engineering drawings.



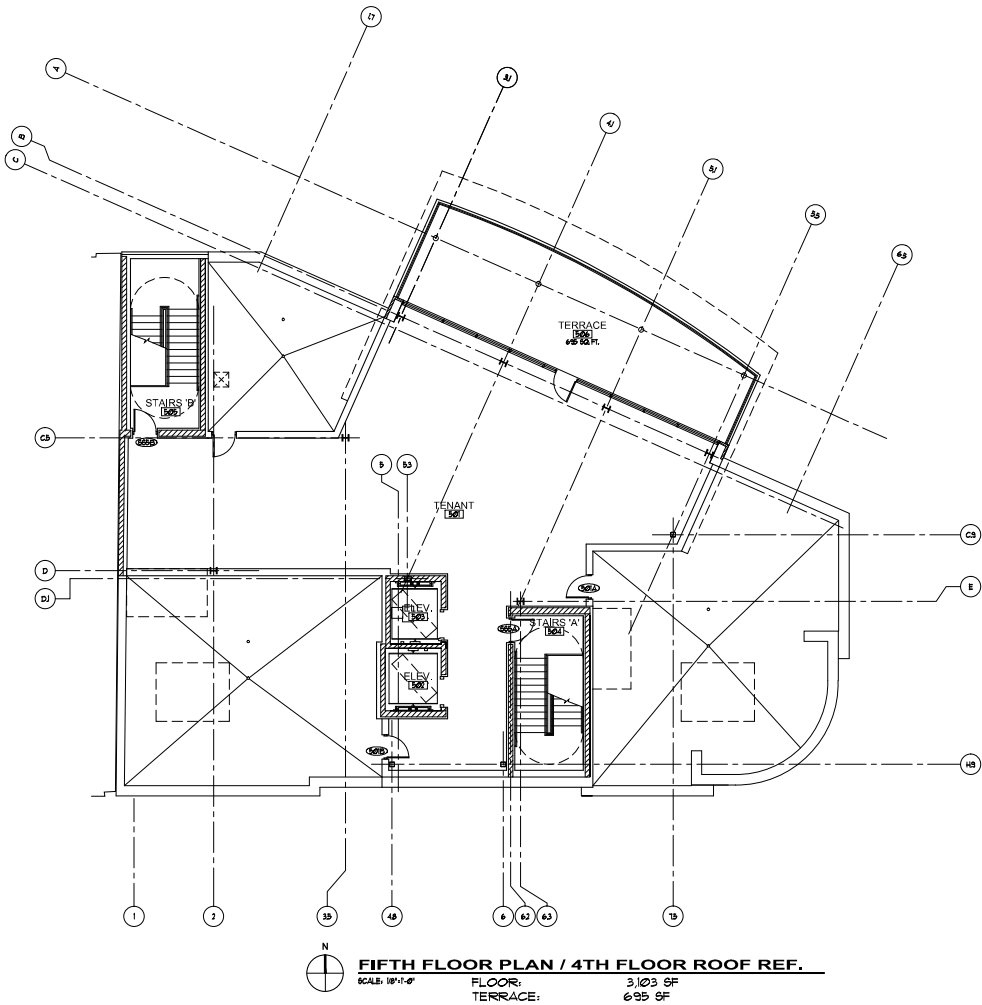
River Main Mixed-Use Building
315 South Main Street - Naperville, IL
December 20, 2019 | project 2019-20

charles vincent george
ARCHITECTS
1245 E. Diehl Rd. Suite 101 • Naperville, IL 60563
P: 630.357.2023 • F: 630.357.2662



River Main Mixed-Use Building
 315 South Main Street - Naperville, IL
 December 20, 2019 | project 2019-20


charles vincent george
ARCHITECTS
 1245 E. Diehl Rd. Suite 101 • Naperville, IL 60563
 P: 630.357.2023 • F: 630.357.2662



N
FIFTH FLOOR PLAN / 4TH FLOOR ROOF REF.
 SCALE: 1/8"=1'-0"
 FLOOR: 3,103 SF
 TERRACE: 695 SF

River Main Mixed-Use Building
 315 South Main Street - Naperville, IL
 December 20, 2019 | project 2019-20