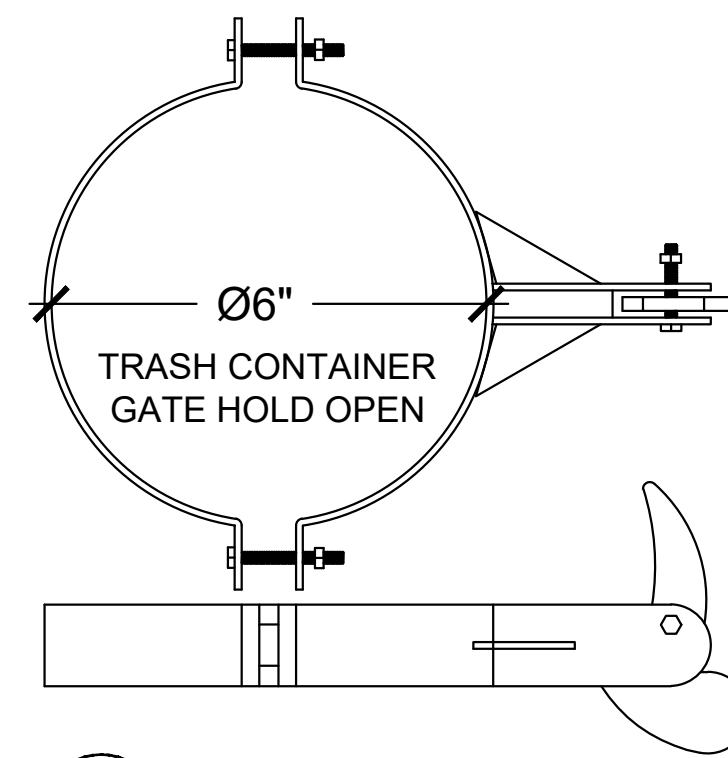


General Notes

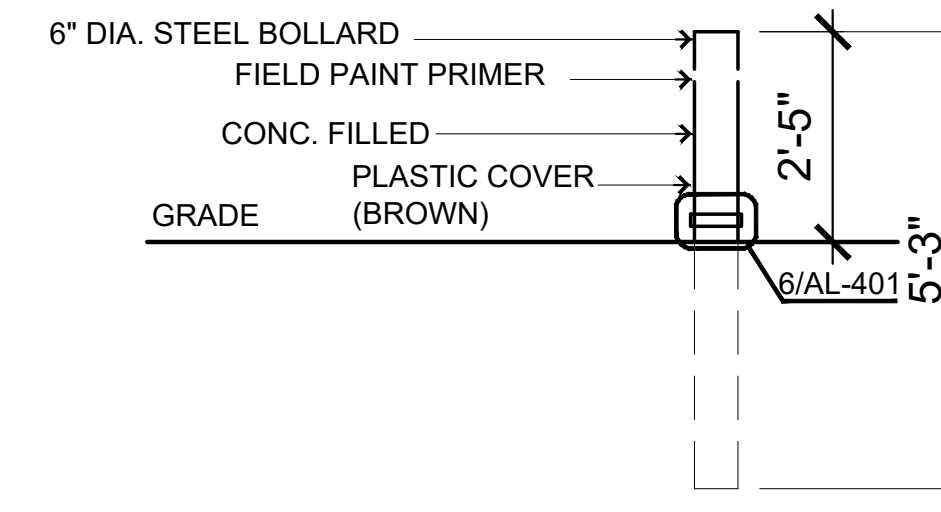
1. RELATED SHEETS: FOR ADDITIONAL INFORMATION NOT DIRECTLY REFERENCED, SEE THE FOLLOWING SHEETS.
G-001 FOR GENERAL PROJECT NOTES

Construction Notes

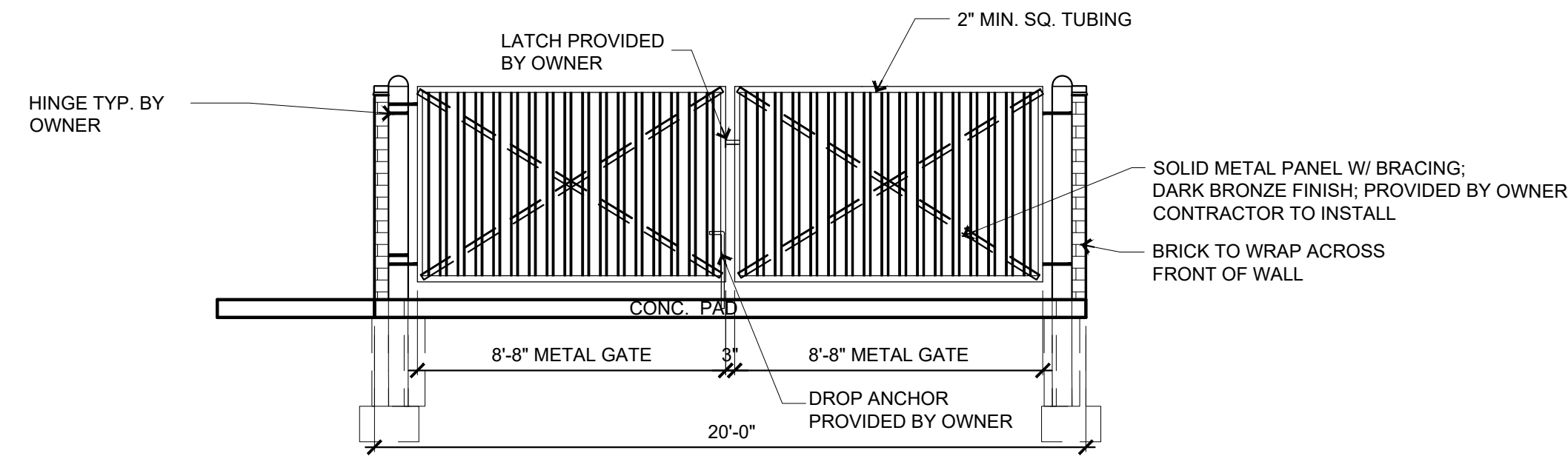
- 1) ALL DOMES ON FENCE POSTS ARE TO BE FASTENED SO THAT THEY CAN NOT BE REMOVED.
- 2) VERIFY SCREENING WITH LOCAL AUTHORITY.
- 3) CONTRACTOR TO PRIME ALL 6" BOLLARDS PRIOR TO FINISHED PAINT COAT.
- 4) DUMPSTER ENCLOSURE WALLS WILL BE 4" BLOCK PURCHASED BY CONTRACTOR



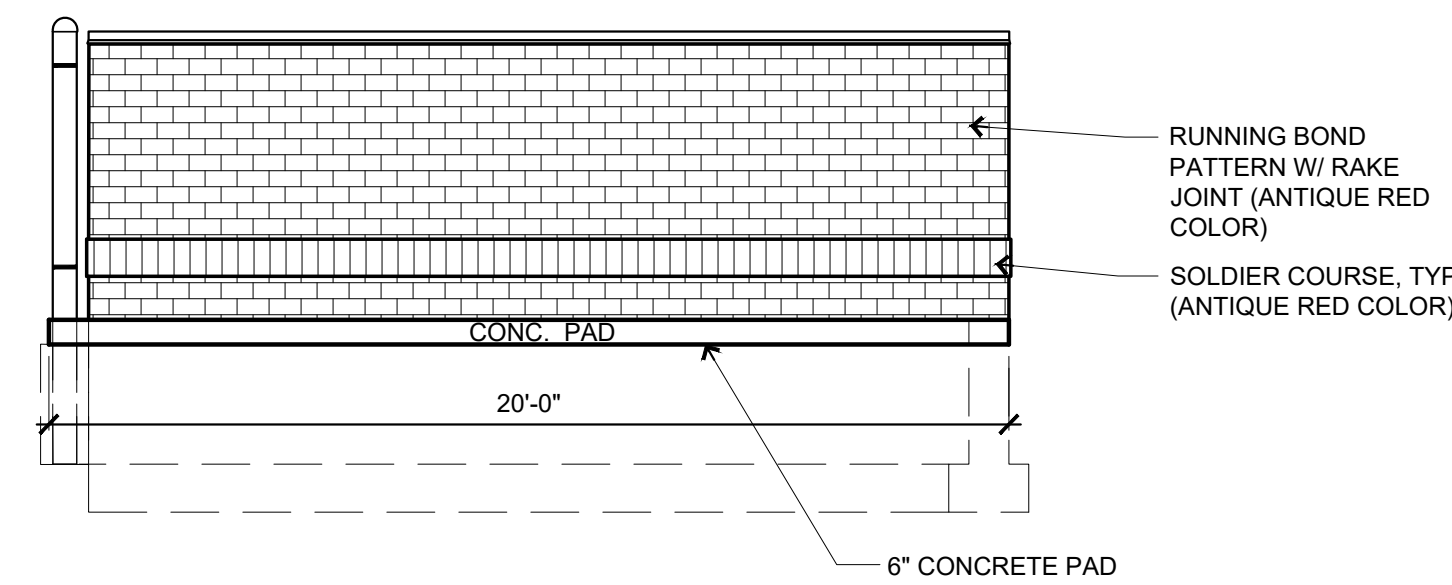
6 Gate Open Holder
No Scale



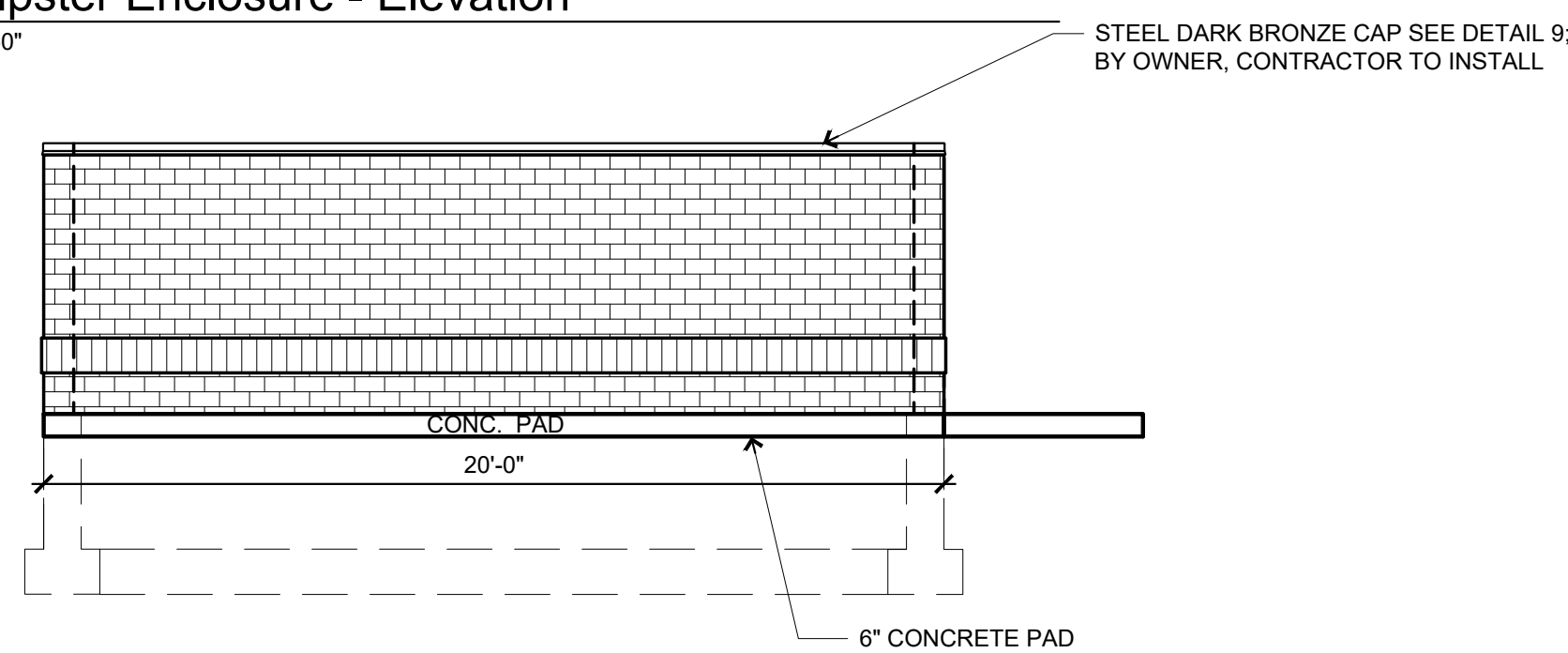
7 Bollard Detail
No Scale



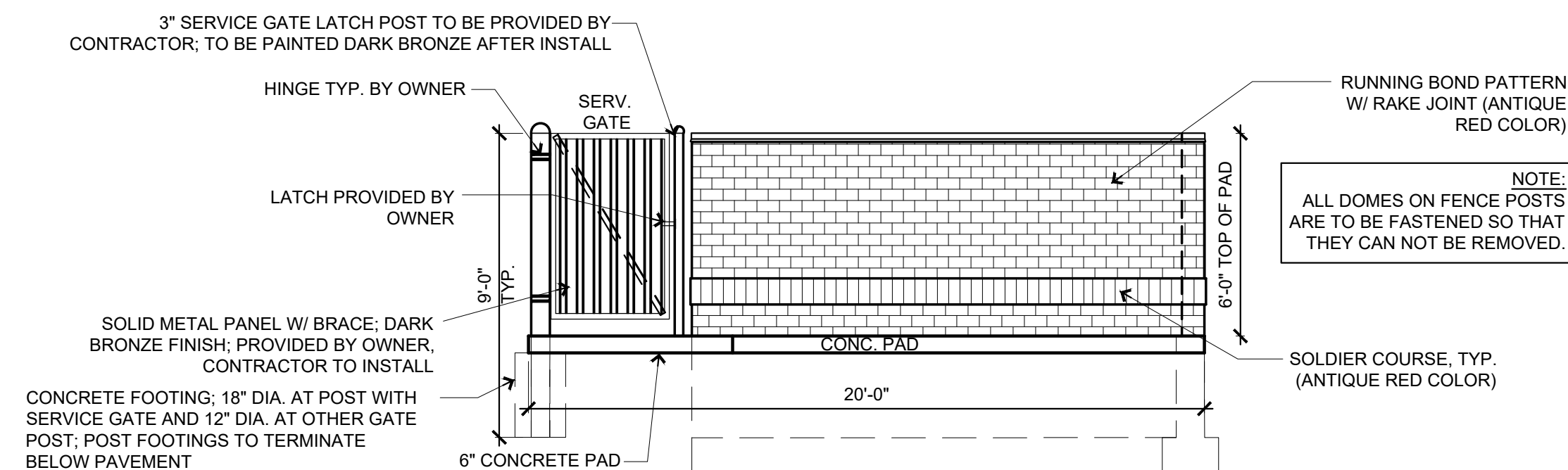
5 Dumpster Enclosure - Elevation
1/4" = 1'-0"



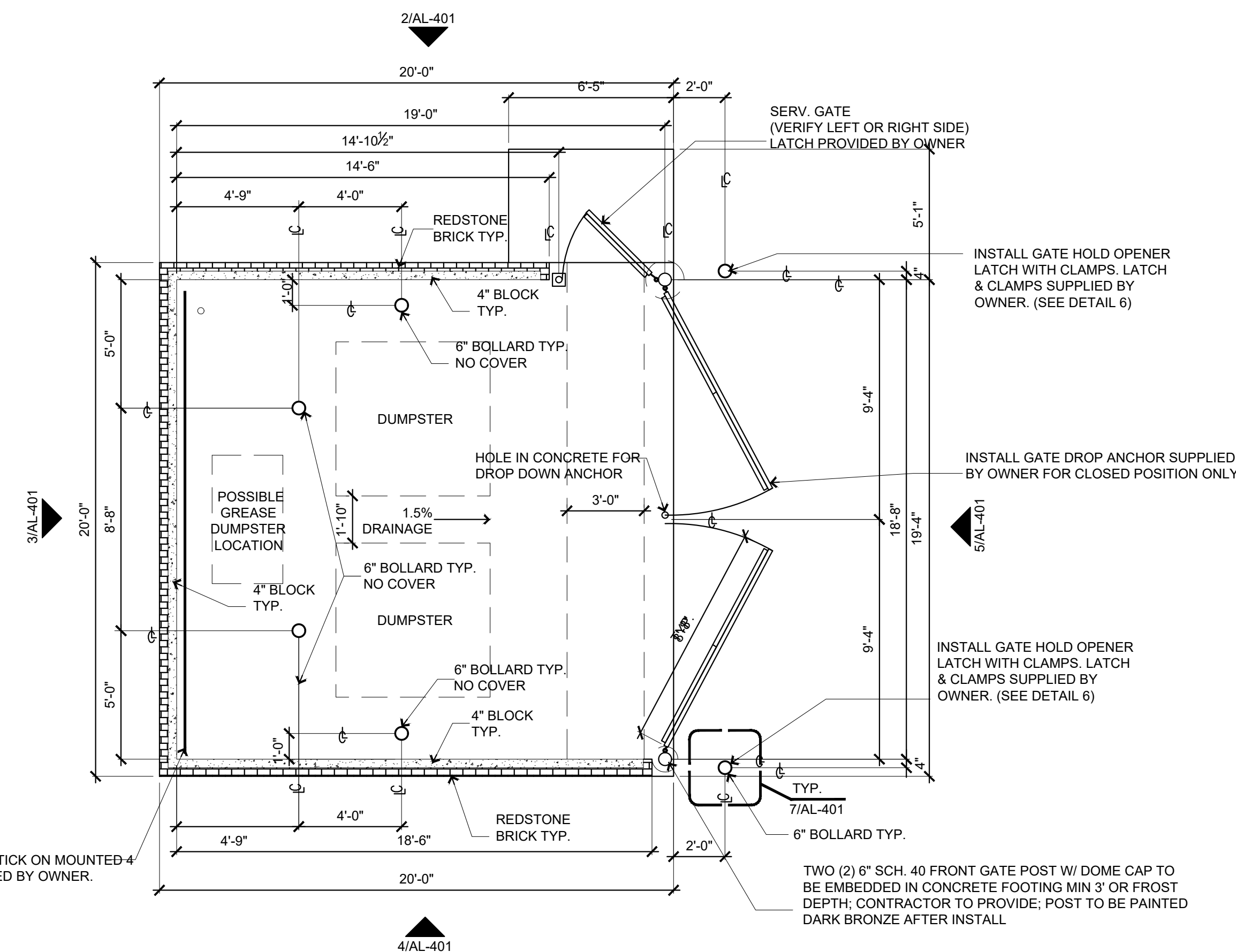
4 Dumpster Enclosure - Elevation
1/4" = 1'-0"



3 Dumpster Enclosure - Elevation
1/4" = 1'-0"



2 Dumpster Enclosure - Elevation
1/4" = 1'-0"



1 Dumpster Plan
1/4" = 1'-0"

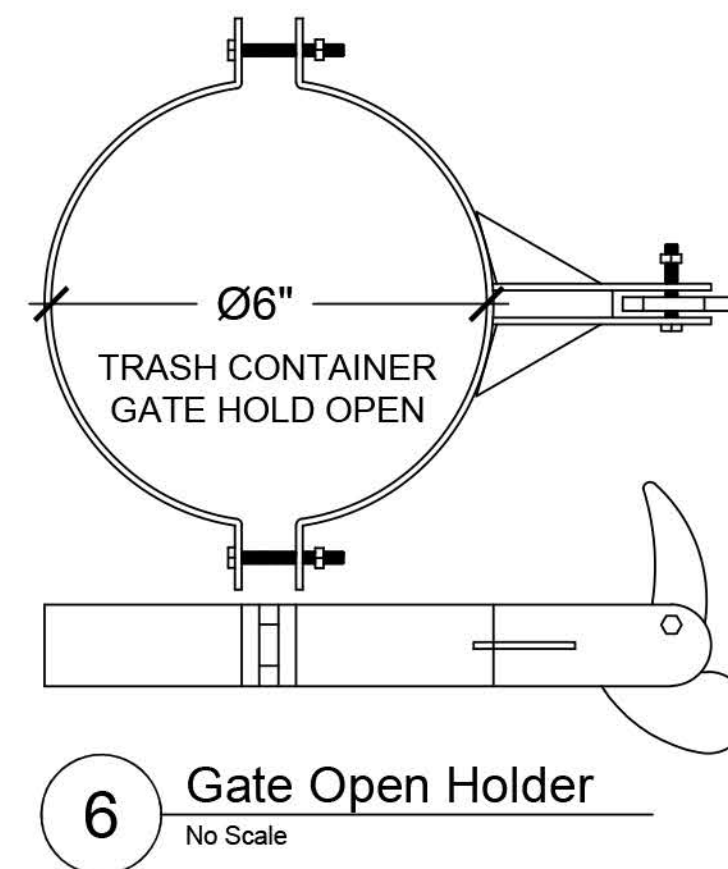
MASTER DRAWING SET			
REVISIONS:		2021 PRINTS	
SGA Design Group, p.c. 1437 South Boulder, Suite 550 Tulsa, Oklahoma 74119.3609 p: 918.587.8600 f: 918.587.8601 www.sgadesigngroup.com		FOR REFERENCE ONLY	
CASEY'S CONSTRUCTION DIVISION One Convenience Blvd., P.O. Box 3001, Ankeny, Ia. 50021 515-965-6100			
PROJECT: Naperville, IL #6533 1290 S. RT. 59 U3 STYLE STORE - FLAT ROOF	PROJECT PUBLISHED: 12/08/22 REVISED ON:	PROJECT PUBLISHED: 02/22/21 REVISED ON: 03/24/21 05/20/21 06/18/21	DRAWING INFORMATION: DUMPSTER ENCLOSURE AL-401
DRAWING INFORMATION: CONSTRUCTION DIVISION			
DRAWN BY: AJ	CHECKED BY: JD	PROJECT NUMBER: 2100454	

General Notes

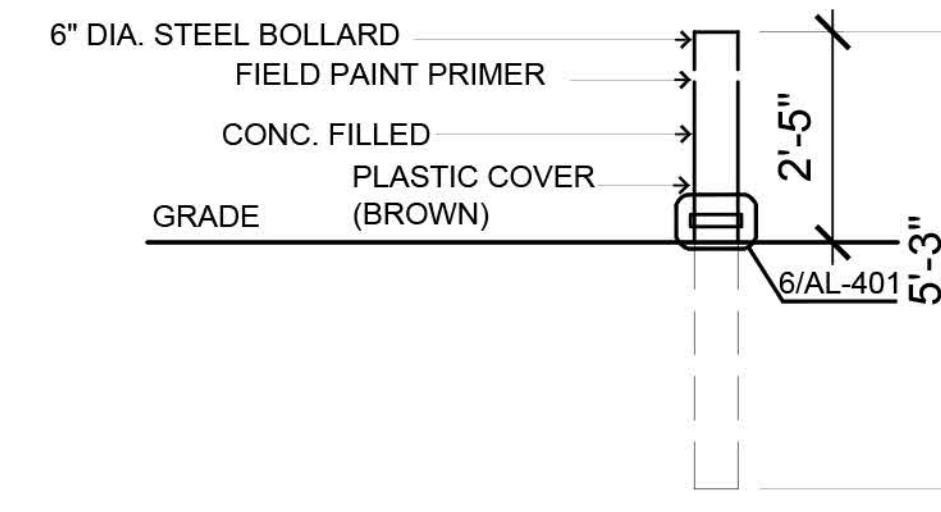
1. RELATED SHEETS: FOR ADDITIONAL INFORMATION NOT DIRECTLY REFERENCED, SEE THE FOLLOWING SHEETS:
G-001 FOR GENERAL PROJECT NOTES

Construction Notes

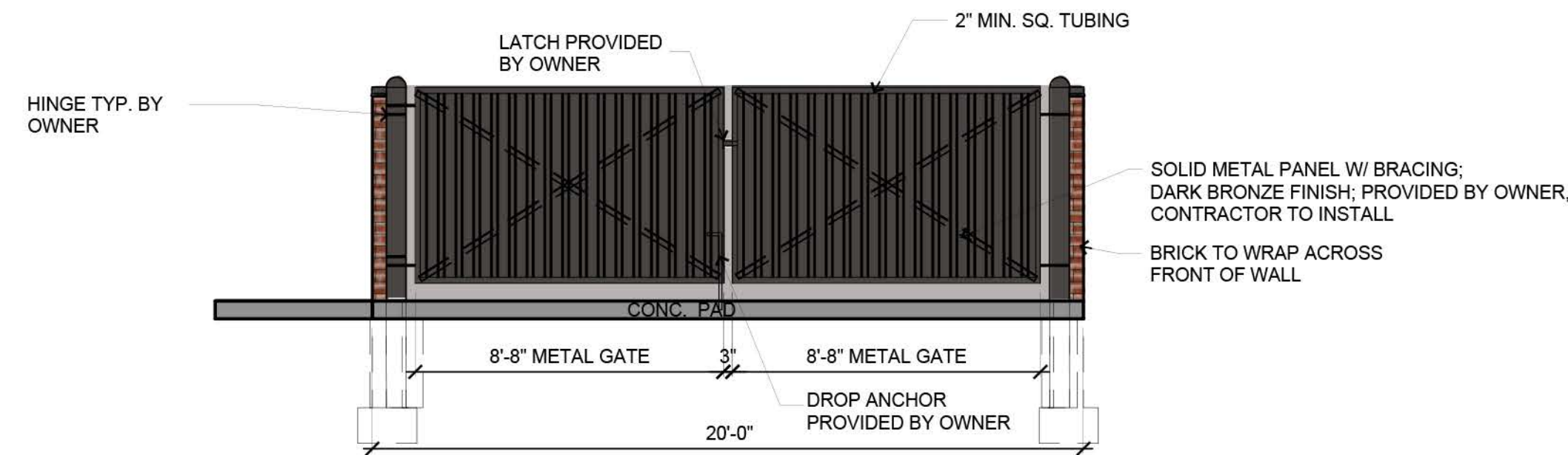
- 1) ALL DOMES ON FENCE POSTS ARE TO BE FASTENED SO THAT THEY CAN NOT BE REMOVED.
- 2) VERIFY SCREENING WITH LOCAL AUTHORITY.
- 3) CONTRACTOR TO PRIME ALL 6" BOLLARDS PRIOR TO FINISHED PAINT COAT.
- 4) DUMPSTER ENCLOSURE WALLS WILL BE 4" BLOCK PURCHASED BY CONTRACTOR



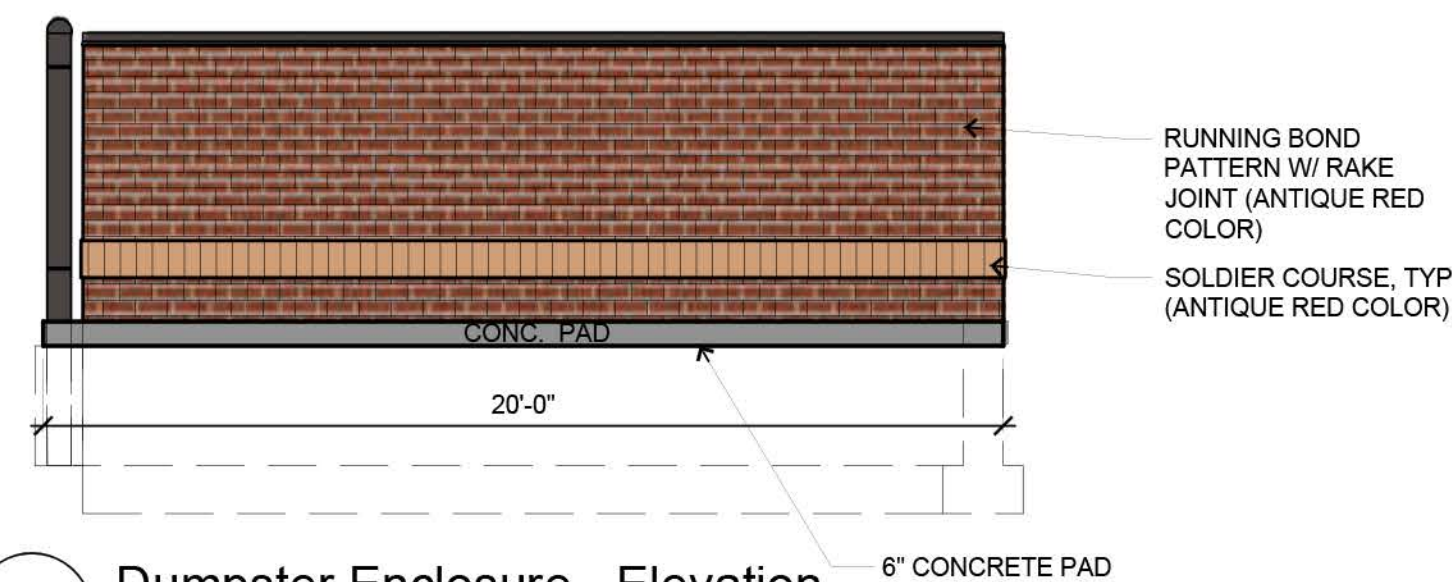
6 Gate Open Holder
No Scale



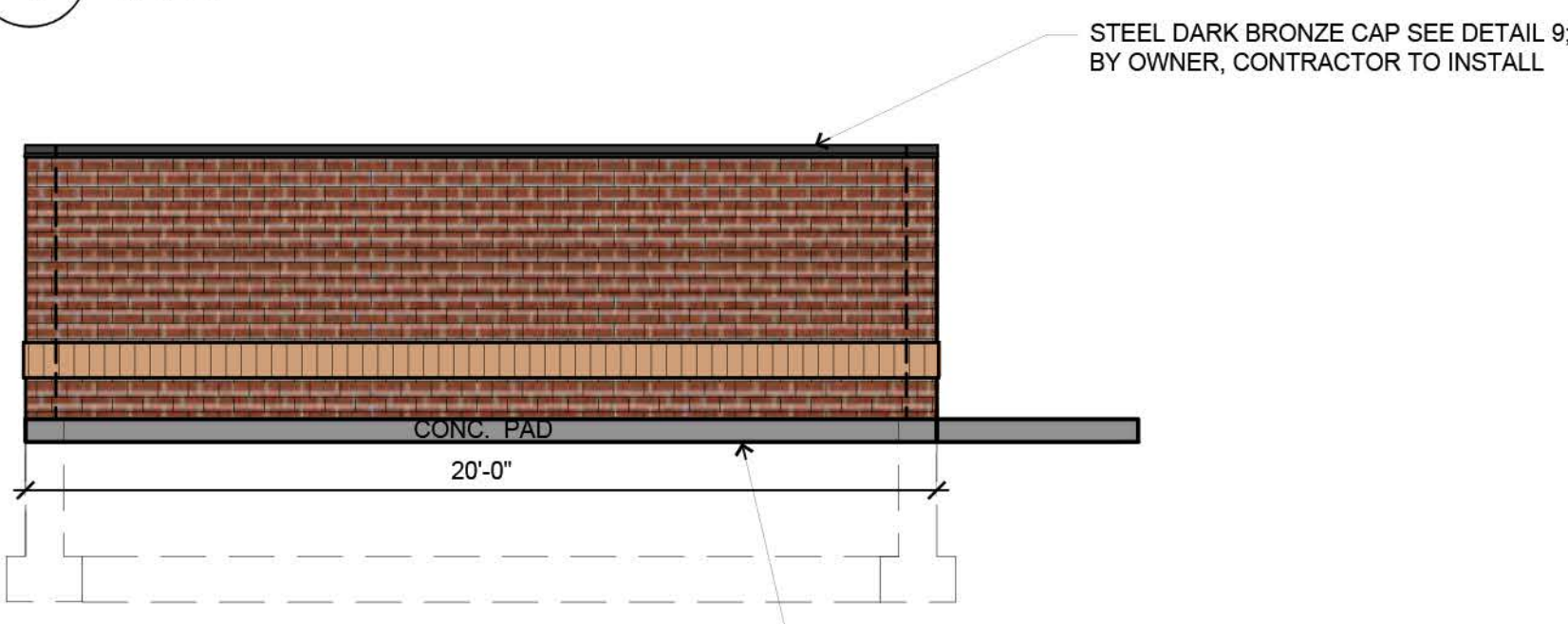
7 Bollard Detail
No Scale



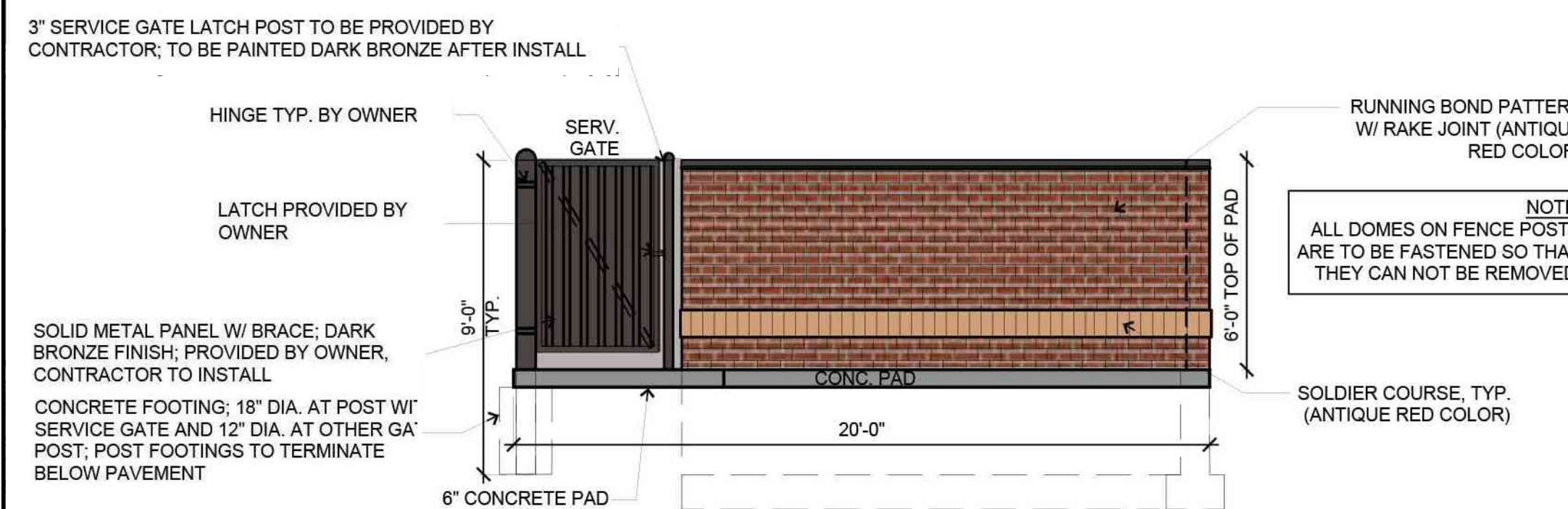
5 Dumpster Enclosure - Elevation
1/4" = 1'-0"



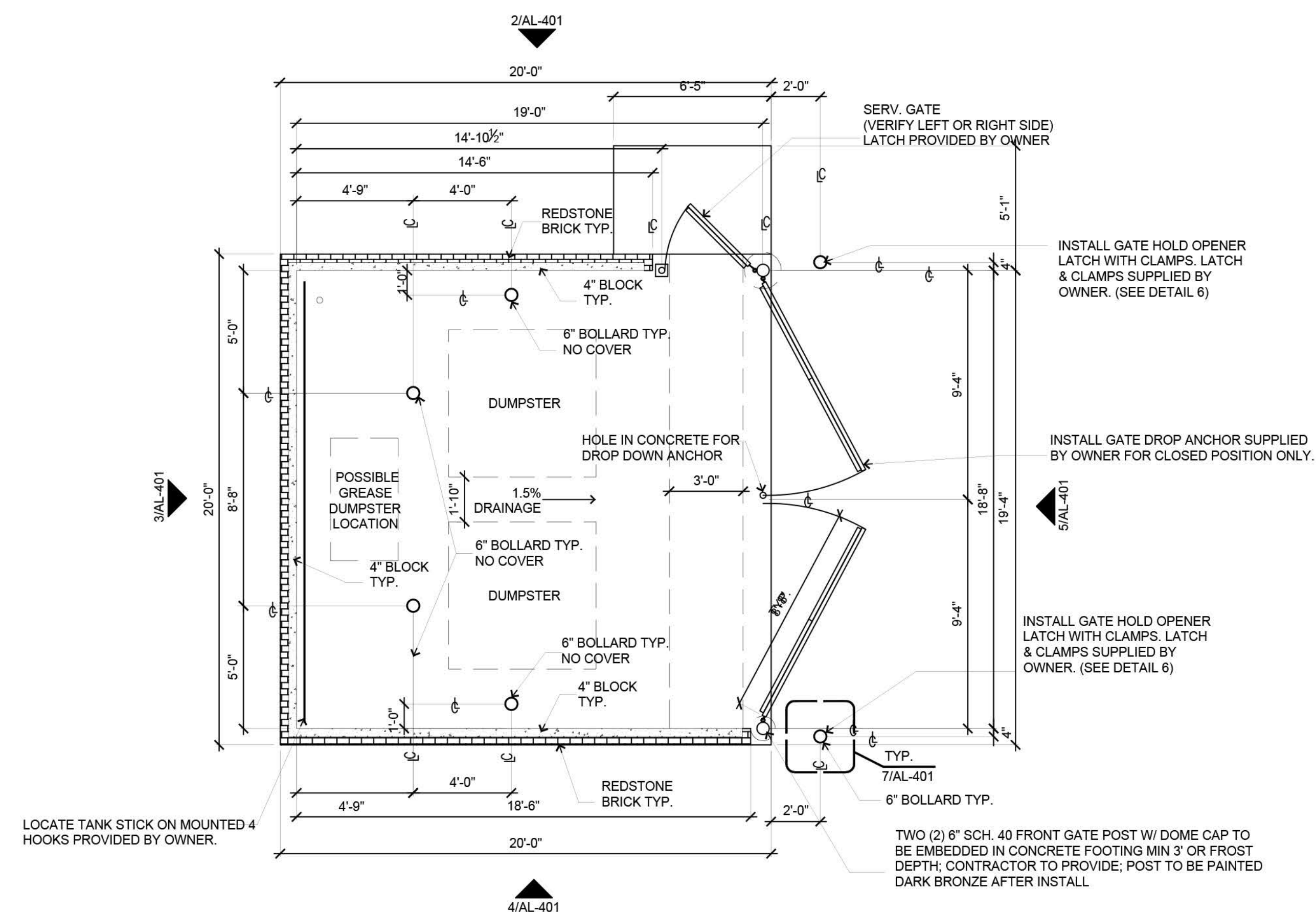
4 Dumpster Enclosure - Elevation
1/4" = 1'-0"



3 Dumpster Enclosure - Elevation
1/4" = 1'-0"



2 Dumpster Enclosure - Elevation
1/4" = 1'-0"



1 Dumpster Plan
1/4" = 1'-0"

MASTER DRAWING SET

REVISIONS: 2021 PRINTS

SGA Design Group, p.c.

1437 South Boulder, Suite 550
Tulsa, Oklahoma 74119.3609
p: 918.587.8600
f: 918.587.8601
www.sgadesigngroup.com

FOR REFERENCE ONLY

STIPULATION FOR REUSE			
THIS DRAWING WAS PREPARED FOR USE ON A SPECIFIC SITE CONTAMINATION ONLY WITH ITS ISSUE DATE AND IT IS NOT SUITABLE FOR USE ON A DIFFERENT PROJECT SITE OR AT A LATER TIME. USE OF THIS DRAWING FOR REFERENCE OR EXAMPLE ON ANOTHER PROJECT REQUIRES THE SERVICES OF ORIGINAL LICENSED ARCHITECT AND ENGINEER. REPRODUCTION OF THIS DRAWING FOR REUSE ON ANOTHER PROJECT IS NOT AUTHORIZED AND IS CONTRARY TO THE LAW. © SGA DESIGN GROUP, P.C.			
CASEY'S CONSTRUCTION DIVISION One Convenience Blvd., P.O. Box 3001, Ankeny, Ia. 50021 515-965-6100			
PROJECT: Naperville, IL #6533 1290 S. RT. 59 U3 STYLE STORE - FLAT ROOF	PROJECT PUBLISHED: 12/08/22 REVISED ON:	PROTYPED ON: 02/22/21 REVISED ON: 03/24/21 05/20/21 06/18/21	DRAWING INFORMATION: DUMPSTER ENCLOSURE
DRAWING INFORMATION: CONSTRUCTION DIVISION		PROJECT NUMBER: 2100454	AL-401
DESIGNED BY: AJ	CHECKED BY: JD		