

DAVID A. SCHAEFER ARCHITECTS
 2500 S. HIGHLAND AVE. SUITE 340
 LOMBARD, ILLINOIS 60148
 W: 630.261.9250 F: 630.261.9259
 © 2024 DAVID A. SCHAEFER ARCHITECTS PC

MATERIAL SCHEDULE

- 1 ASPHALT SHINGLES.
 TIMBERLINE SHINGLES SUPPLY BY MATERIALS CORP., COLOR : WEATHERED WOOD.
- 2 PRE-FIN. ALUM. TRIM.
 UNA-CLAD - ALUM. FASCIA, TRIM, & DOWNSPOUTS, SUPPLIED BY UNA-CLAD STEEL, COLOR : MEDIUM BRONZE.
- 3 FACE BRICK : (RUNNING BOND)
 NORMAN SIZE FACE BRICK SUPPLIED BY ILLINOIS BRICK COMPANY COLOR, MEDIUM IRONSPOT TT SMOOTH NORMAN.
- 4 VENEER STONE CAST STONE
 VENEER STONE SUPPLIED BY "BUECHEL STONE CORP.", COLOR.
- 5A SMOOTH FACE CAST STONE.
 CAST STONE, SUPPLIED BY "HARVEY CEMENT PRODUCTS", COLOR : #3
- 5B ROCK FACE CAST STONE SILL
 CAST STONE, SUPPLIED BY "HARVEY CEMENT PRODUCTS", COLOR : #3
- 6 STOREFRONT
 ALUMINUM STOREFRONT SUPPLIED BY "KANNEER", COLOR : CHAMPAGNE
- 7 LIGHT FIXTURE
 MURRAY FIESS-#OL1802WP
 ALL ELECTRICAL TO BE DONE BY DESIGN BUILD CONTRACTOR.

4/30/2024	CITY REVISIONS
5/31/2024	ISSUED FOR CITY REVIEW

NO. DATE DESCRIPTION

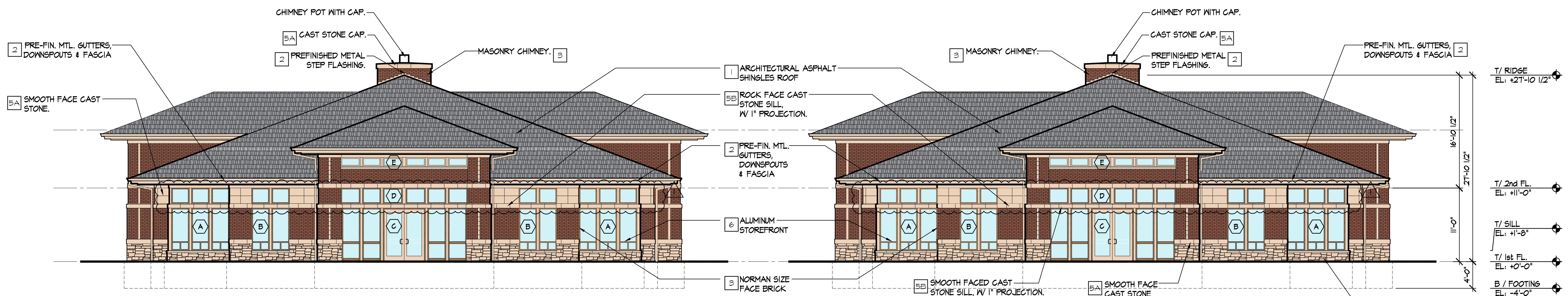
STAMP

SIGNATURE: _____ DATE: _____
 PROFESSIONAL DESIGN FIRM NO: 184.003216

BHC BUILDING "F"
 REIVERWOOD OFFICE CAMPUS
 628 N. RIVER ROAD
 NAPERVILLE, IL 60563

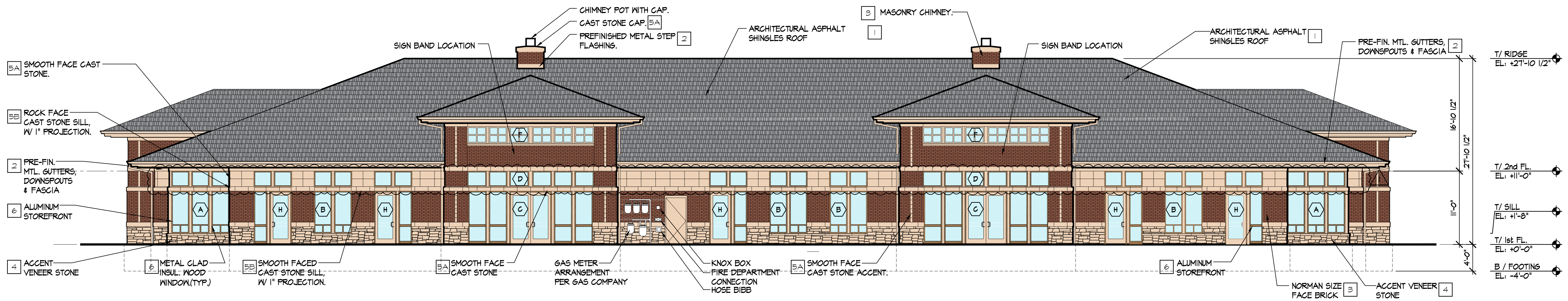
DRAWN BY: S.L.	SHEET NO. A6
PROJECT NO: 23-147	
ISSUE DATE: OCT. 12, 2023	

EXHIBIT F

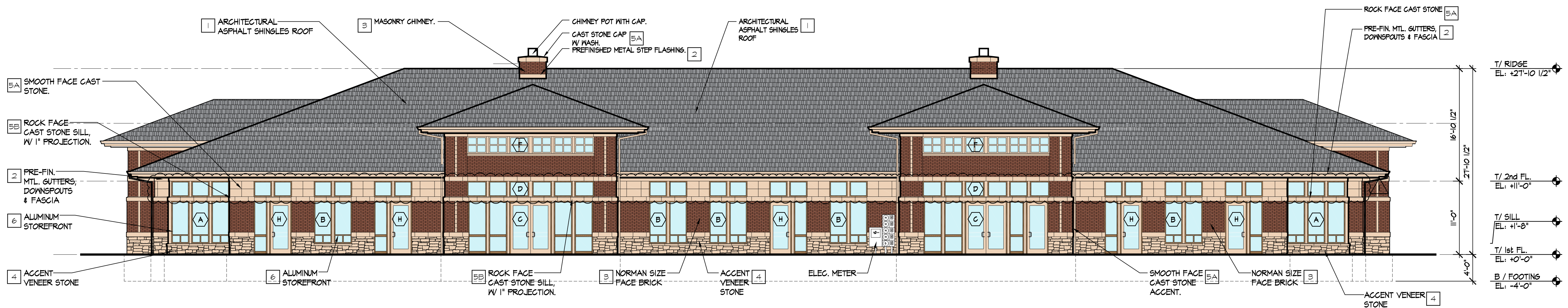


4 NORTH (SIDE) ELEVATION
 SCALE: 1/8" = 1'-0"

3 SOUTH (SIDE) ELEVATION
 SCALE: 1/8" = 1'-0"



2 WEST (FRONT) ELEVATION
 SCALE: 1/8" = 1'-0"



1 EAST (REAR) ELEVATION
 SCALE: 1/8" = 1'-0"