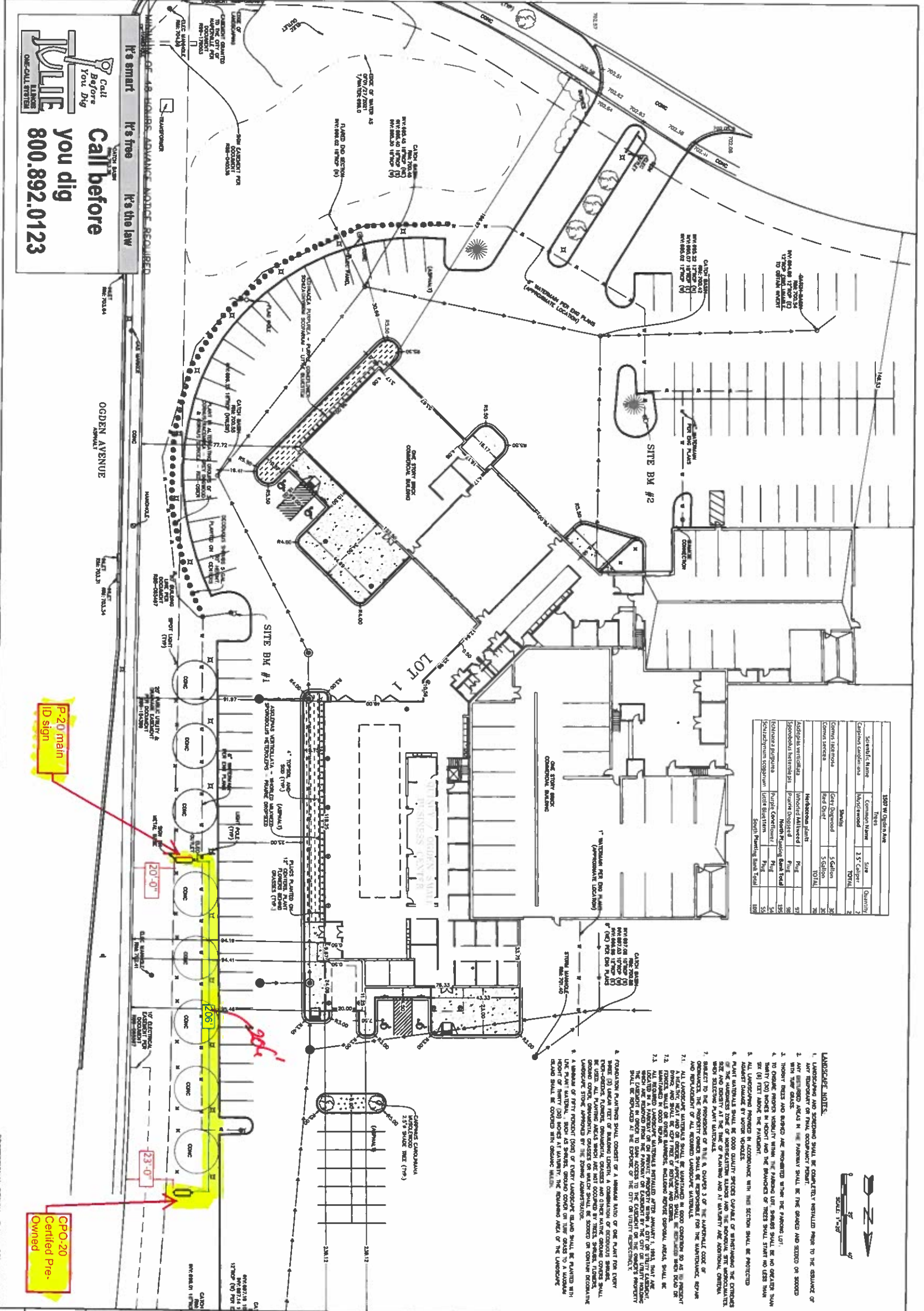
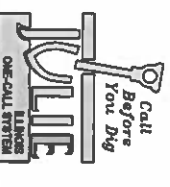


Call before you dig  
 800.892.0123

It's smart  
 It's free  
 It's the law



Scientific Name	Common Name	Size	Quantity
Caprilla caroliniana	Hardy Kiwifruit	3.5' Caliper	2
		TOTAL	2
Comus lactinosa	Red Dogwood	5 Caliper	30
	Red Dogwood	5 Caliper	30
		TOTAL	30
Adiantum verticillatum	Winged Ailanthus	Plug	97
		Plug	97
		TOTAL	194
Edwardsia virginiana	White Dogwood	Plug	30
		Plug	30
		TOTAL	60
Scorodolobus bipinnatus	White Dogwood	Plug	54
		Plug	54
		TOTAL	108



- LANDSCAPE NOTES:**
1. LANDSCAPING AND SEEDING SHALL BE COMPLETELY INSTALLED PRIOR TO THE BEGAINING OF ANY CONSTRUCTION OR FINAL OCCUPANCY PERMIT.
  2. ALL PLANTING SHALL BE THE PROPERTY OF THE OWNER AND SHALL BE MAINTAINED FOR THE LIFE OF THE PROJECT.
  3. PLANTING SHALL BE MAINTAINED FOR THE LIFE OF THE PROJECT.
  4. TO OBTAIN PROPER MOISTURE RETENTION, PLANTING SHALL BE DONE WITH MULCH.
  5. ALL PLANTING SHALL BE MAINTAINED FOR THE LIFE OF THE PROJECT.
  6. PLANT MATERIALS SHALL BE OF GOOD QUALITY SPECIES CAPABLE OF WITHSTANDING THE CLIMATIC AND SOIL CONDITIONS AT THE PROJECT SITE.
  7. ALL PLANTING SHALL BE MAINTAINED FOR THE LIFE OF THE PROJECT.
  8. PLANTING SHALL BE MAINTAINED FOR THE LIFE OF THE PROJECT.
  9. PLANTING SHALL BE MAINTAINED FOR THE LIFE OF THE PROJECT.
  10. PLANTING SHALL BE MAINTAINED FOR THE LIFE OF THE PROJECT.
  11. PLANTING SHALL BE MAINTAINED FOR THE LIFE OF THE PROJECT.
  12. PLANTING SHALL BE MAINTAINED FOR THE LIFE OF THE PROJECT.
  13. PLANTING SHALL BE MAINTAINED FOR THE LIFE OF THE PROJECT.
  14. PLANTING SHALL BE MAINTAINED FOR THE LIFE OF THE PROJECT.
  15. PLANTING SHALL BE MAINTAINED FOR THE LIFE OF THE PROJECT.
  16. PLANTING SHALL BE MAINTAINED FOR THE LIFE OF THE PROJECT.
  17. PLANTING SHALL BE MAINTAINED FOR THE LIFE OF THE PROJECT.
  18. PLANTING SHALL BE MAINTAINED FOR THE LIFE OF THE PROJECT.
  19. PLANTING SHALL BE MAINTAINED FOR THE LIFE OF THE PROJECT.
  20. PLANTING SHALL BE MAINTAINED FOR THE LIFE OF THE PROJECT.

DATE: 04-15-2021 PROJECT #: W21017.00 DESIGNED BY: KF DRAWN BY: KF CHECKED BY: JRG	<b>CADILLAC OF NAPERVILLE</b> 1507 W OGDEN AVENUE, NAPERVILLE, IL 60540 PROJECT	<b>FLAG AUTOMOTIVE GROUP</b> CADILLAC OF NAPERVILLE FRANK LASKARIS 1507 W OGDEN AVENUE, NAPERVILLE, IL 60540 (630) 355-2700	<b>ENGINEERING RESOURCE ASSOCIATES</b> 3070 WEST AVENUE, SUITE 154 NAPERVILLE, IL 60563 PHONE (630) 363-3800 FAX (630) 363-2121 www.era-llc.com
	DESCRIPTION:		
	L-1.0 SHEET		
	PROFESSIONAL DESIGNER: [Signature]		