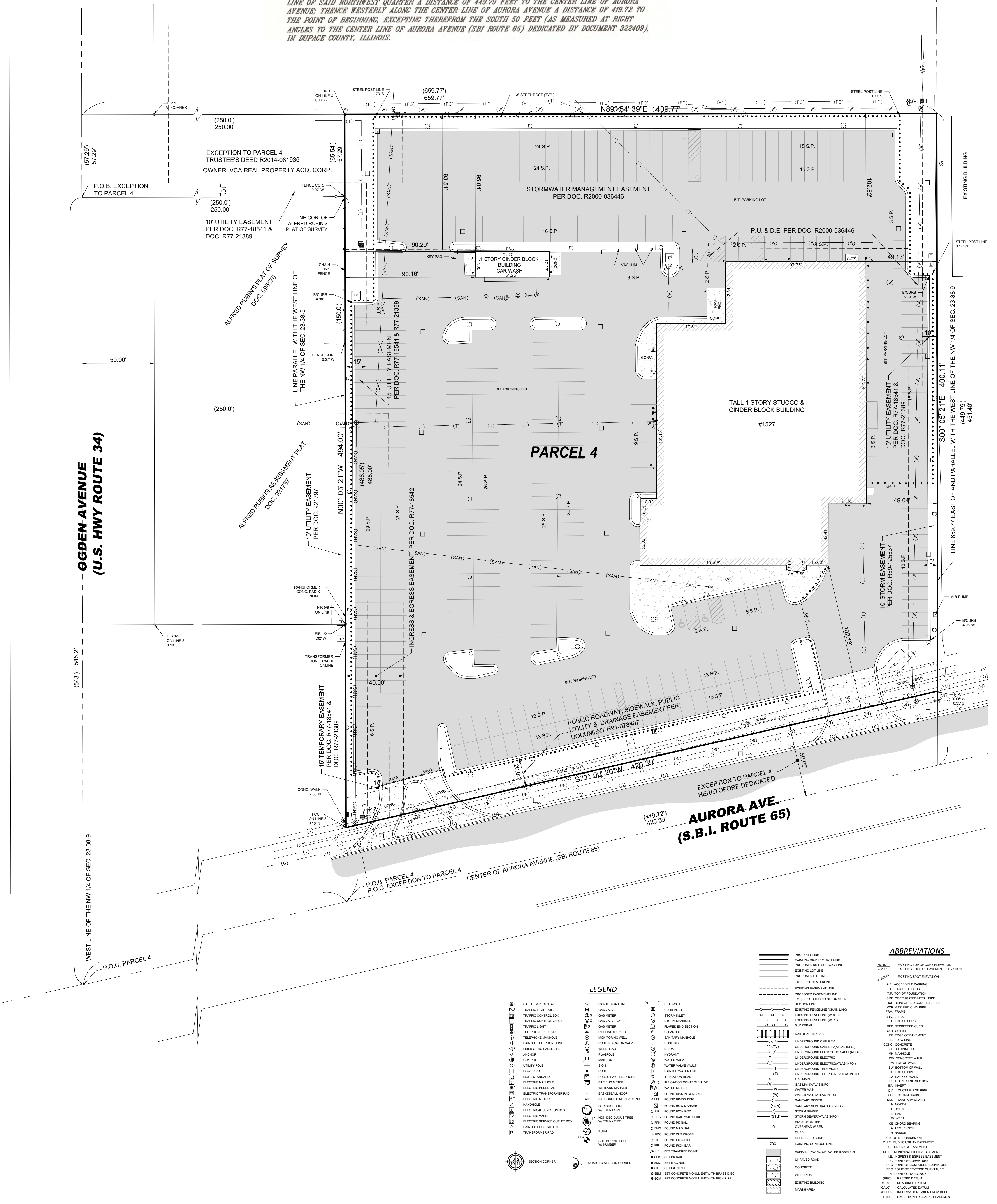
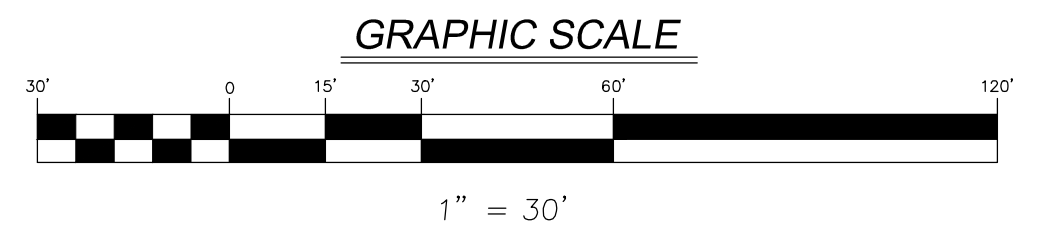


VICINITY MAP
NOT TO SCALE

ALTA/NSPS LAND TITLE SURVEY OF 2363 & 2275 Aurora Ave., 1527 Aurora Ave., & 460 Fort Hill Drive, Naperville, IL

NELSON SURVEYORS, LLC. BOUNDARY AND TOPOGRAPHIC SURVEY

THAT PART OF THE NORTHWEST QUARTER OF SECTION 23, TOWNSHIP 38 NORTH, RANGE 9, EAST OF THE THIRD PRINCIPAL MERIDIAN, DESCRIBED AS FOLLOWS: BEGINNING AT A POINT IN THE CENTER OF AURORA AVENUE (SBI ROUTE 65) 256.98 FEET EASTERLY OF THE INTERSECTION OF SAID ROAD AND THE WEST LINE OF THE NORTHWEST QUARTER OF SAID SECTION 23; THENCE NORTHERLY PARALLEL TO SAID WEST LINE FOR A DISTANCE OF 551.59 FEET TO A POINT 250 FEET EAST OF THE WEST LINE OF SAID NORTHWEST QUARTER AS MEASURED AT RIGHT ANGLES THERETO; THENCE SOUTH 89 DEGREES 03 MINUTES 00 SECONDS EAST 409.77 FEET; THENCE SOUTHERLY PARALLEL TO THE WEST LINE OF SAID NORTHWEST QUARTER A DISTANCE OF 449.79 FEET TO THE CENTER LINE OF AURORA AVENUE; THENCE WESTERLY ALONG THE CENTER LINE OF AURORA AVENUE A DISTANCE OF 419.72 TO THE POINT OF BEGINNING, EXCEPTING THEREFROM THE SOUTH 50 FEET (AS MEASURED AT RIGHT ANGLES TO THE CENTER LINE OF AURORA AVENUE (SBI ROUTE 65) DEDICATED BY DOCUMENT 322409), IN DUPAGE COUNTY, ILLINOIS.



- ### LEGEND
- CABLE TV PEDestal
 - TRAFFIC LIGHT POLE
 - TRAFFIC CONTROL BOX
 - TRAFFIC CONTROL VALVE
 - TRAFFIC LIGHT
 - TELEPHONE PEDestal
 - TELEPHONE MANHOLE
 - PAINTED TELEPHONE LINE
 - FIBER OPTIC CABLE LINE
 - ANDOR
 - GUY POLE
 - UTILITY POLE
 - POWER POLE
 - LIGHT STANDARD
 - ELECTRIC MANHOLE
 - ELECTRIC PEDestal
 - ELECTRIC TRANSFORMER PAD
 - ELECTRIC METER
 - HANDHOLE
 - ELECTRIC JUNCTION BOX
 - ELECTRIC VALVE
 - ELECTRIC SERVICE OUTLET BOX
 - PAINTED ELECTRIC LINE
 - TRANSFORMER PAD
 - PAINTED GAS LINE
 - GAS VALVE
 - GAS VALVE VALVE
 - GAS METER
 - PIPELINE MARKER
 - MONITORING WELL
 - POST INDICATOR VALVE
 - WELL HEAD
 - FLANGE
 - MAILBOX
 - WATER VALVE
 - WATER VALVE VALVE
 - WATER METER
 - IRRIGATION HEAD
 - IRRIGATION CONTROL VALVE
 - WATER METER
 - FOUND DISK IN CONCRETE
 - FOUND BRASS DISC
 - FOUND IRON MARKER
 - FOUND IRON ROD
 - FOUND RAILROAD SPIKE
 - FOUND IRON NAIL
 - FOUND IRON NAIL
 - FOUND IRON PIPE
 - FOUND IRON BAR
 - SET TRAVELER POINT
 - SET PK NAIL
 - SET IRON NAIL
 - SET IRON PIPE
 - SET CONCRETE MONUMENT WITH BRASS DISC
 - SET CONCRETE MONUMENT WITH IRON PIPE
 - HEADWALL
 - CURB INLET
 - STORM INLET
 - STORM MANHOLE
 - FLARED END SECTION
 - CLEANOUT
 - SANITARY MANHOLE
 - HOSE BIB
 - BROCK
 - HYDRANT
 - WATER VALVE
 - WATER VALVE VALVE
 - WATER METER
 - IRRIGATION HEAD
 - IRRIGATION CONTROL VALVE
 - WATER METER
 - FOUND DISK IN CONCRETE
 - FOUND BRASS DISC
 - FOUND IRON MARKER
 - FOUND IRON ROD
 - FOUND RAILROAD SPIKE
 - FOUND IRON NAIL
 - FOUND IRON NAIL
 - FOUND IRON PIPE
 - FOUND IRON BAR
 - SET TRAVELER POINT
 - SET PK NAIL
 - SET IRON NAIL
 - SET IRON PIPE
 - SET CONCRETE MONUMENT WITH BRASS DISC
 - SET CONCRETE MONUMENT WITH IRON PIPE

- ### ABBREVIATIONS
- 782.02 EXISTING TOP OF CURB ELEVATION
 - 782.12 EXISTING EDGE OF PAVEMENT ELEVATION
 - 782.52 EXISTING SPOT ELEVATION
 - A.P. ACCESSIBLE PARKING
 - F.F. FINISHED FLOOR
 - T.F. TOP OF FOUNDATION
 - CONC. CONCRETE
 - REF. REINFORCED CONCRETE
 - WCP. WITHEDED CLAY PIPE
 - FRM. FRAME
 - BRK. BRICK
 - TC. TOP OF CURB
 - DEP. DEPRESSED CURB
 - GUT. GUTTER
 - EP. EDGE OF PAVEMENT
 - L.L. FLOW LINE
 - CONC. CONCRETE
 - SET. SETTIMENTS
 - BR. BRICK
 - CONC. CONCRETE
 - W. WEST
 - SW. SWATH OF WALK
 - W. WEST
 - SW. SWATH OF WALK
 - FEES. FEARED END SECTION
 - WV. WOOD
 - DIP. DUCTILE IRON PIPE
 - SD. STORM DRAIN
 - SAN. SANITARY SEWER
 - H. NORTH
 - S. SOUTH
 - E. EAST
 - W. WEST
 - OR. CHORE BEARING
 - H. HOLE ENTRY
 - R. RADAR
 - BE. UTILITY EASEMENT
 - P.U.E. PUBLIC UTILITY EASEMENT
 - D.E. DRAINAGE EASEMENT
 - M.E. MANHOLE FRUIT EASEMENT
 - I.E. INGRESS & EGRESS EASEMENT
 - PC. POINT OF CURVATURE
 - PCO. POINT OF COMPOUND CURVATURE
 - PCF. POINT OF CURVATURE
 - PT. POINT OF TANGENCY
 - REC. RECORD DATUM
 - MEAS. MEASURED DATUM
 - CALC. CALCULATED DATUM
 - INFORM. INFORMATION TAKEN FROM DEED
 - EXE. EXCEPTION TO BLANKET EASEMENT

Engineers 7325 Janes Avenue, Suite 100
Scientists Woodridge, IL 60517
Surveyors 630.724.9200 voice
 630.724.0384 fax
 v3co.com

PREPARED FOR:
Napleton Automotive Group
 One Oakbrook Terrace, Suite 600
 Oakbrook Terrace, IL 60181
 630.455.2946

REVISIONS		
NO.	DATE	DESCRIPTION

ALTA/NSPS LAND TITLE SURVEY
 2363 & 2275 Aurora Ave., 1527 Aurora Ave., 460 Fort Hill Drive, Naperville
 Project No: 02027.NAG
 Group No: VP01.1
 SHEET NO. 4 of 4