





**B**

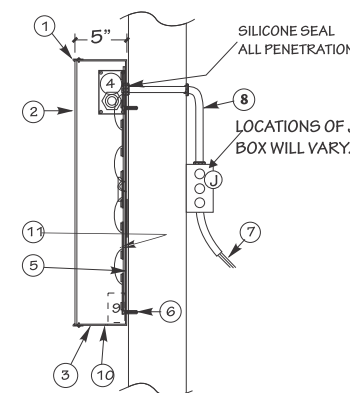
ONE(1) SET OF FACE/HALO ILLUMINATED CHANNEL LETTERS / LOGO FOR FRONT ELEVATION  
SCALE: 3/4" = 1'

**LOGO:** 3" DEEP FABRICATED ALUMINUM RETURNS PAINTED PMS 469 BROWN - SMOOTH SATIN FINISH  
**FACE:** WHITE ACRYLIC W/ 3/4" BROWN TRIMCAP  
**GRAPHICS:** CUT VINYLs - 3M 3630-74 KUMQUAT ORANGE / 35M 3630-65 RUST BROWN / 3M 3630-256 TURQUOISE / 3M 3630-106 BRILLIANT GREEN & ORACAL 8500-53 LIGHT BLUE  
**"KLA SCHOOL" LETTERS:** 3" DEEP FABRICATED ALUMINUM FACES & RETURNS PAINTED PMS 469 BROWN - SMOOTH SATIN FINISH  
**BACKS:** WHITE POLYCARBONATE  
**MOUNTING:** 1 1/2" PROJECTION MOUNTED  
**TAG LINE:** 1/2" THICK FCO ACRYLIC PAINTED PMS 469 BROWN/SMOOTH SATIN FINISH - STUD MOUNTED FLUSH  
**ILLUMINATION:** WHITE LEDS w/ 60W POWER SUPPLIES  
**POWER:** (1)20AMP @ 120VOLTS ELECTRICAL CIRCUIT RUN TO SITE BY OTHERS  
**MOUNTING:** FLUSH TO BUILDING - T.B.D.

- 3M RUST BROWN #63
- 3M KUMQUAT ORANGE #74
- 3M TURQUOISE #236
- 3M BRILLIANT GREEN #106
- ORACAL LIGHT BLUE #053

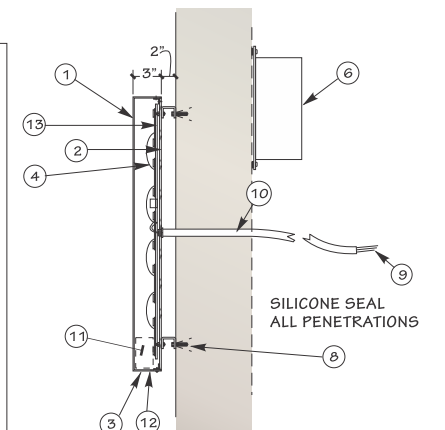
**SECTION DETAIL FOR LOGO**

- LEGEND**
- 1 1" TRIM CAP, BROWN
  - 2 .125 WHITE PLEX FACES
  - 3 .063 ALUM. RETURNS: BLACK ENAMEL
  - 4 60W SELF CONTAINED
  - 5 .063 ALUMINUM BACK
  - 6 MOUNTING ANCHORS
  - 7 120V PRIMARY, No.12 THHN STRANDED WIRE
  - 8 FLEXIBLE, W.P., CONDUIT PER LOCAL CODE
  - 9 SAFETY SWITCH, PER LOCAL CODE
  - 10 1/4" DRAIN HOLE
  - 11 L.E.D MODULE



**SECTION DETAIL FOR "KLA SCHOOLS"**

- LEGEND**
- 1 ALUM. FACE (.125")
  - 2 .187 WHITE LEXAN BACKS
  - 3 .063 ALUM. RETURNS
  - 4 TERMINAL BLOCK
  - 6 REMOTE TRANSFORMER, CLASS II 12V.
  - 8 MOUNTING ANCHORS
  - 9 120V PRIMARY, No.12 THHN STRANDED WIRE
  - 10 FLEXIBLE, WEATHERPROOF, CONDUIT PER
  - 11 SAFETY SWITCH, PER LOCAL CODE
  - 12 1/4" DRAIN HOLE
  - 13 L.E.D.S

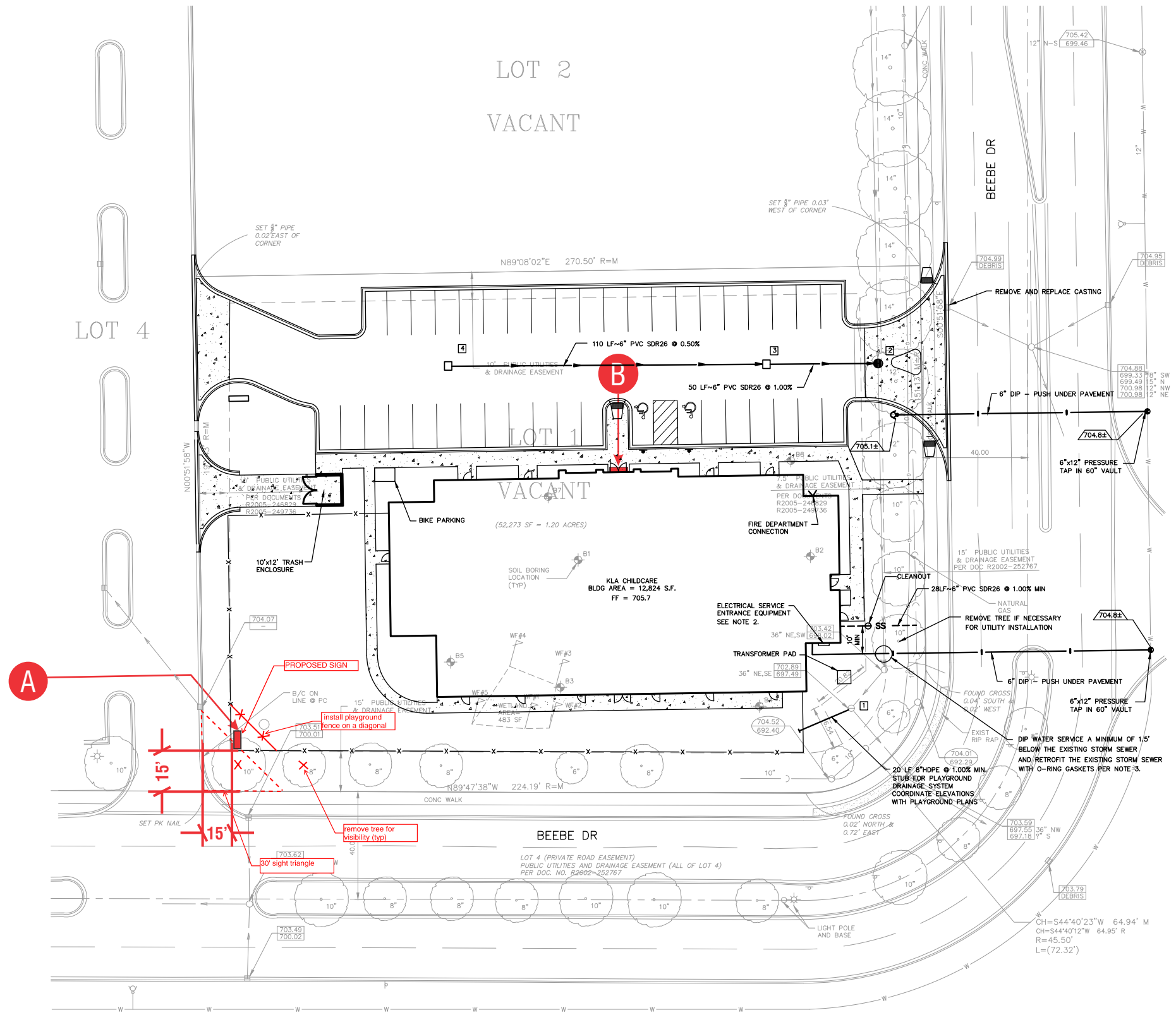


DATE	REVISION
04.21.21	SIGN A - ONLY ONE WILL BE ALLOWED- REVISED PLOT

CUSTOMER APPROVAL \_\_\_\_\_ DATE \_\_\_\_\_

This design is the original and unpublished work of DOYLE SIGNS, INC. and may not be reproduced, copied or exhibited in any fashion without the expressed written consent from an authorized officer of The Company. The rights to this design may be purchased.

<b>CLIENT</b>	KLA SCHOOLS						
<b>ADDRESS</b>	2719 BEEBE DR.						
<b>CITY</b>	NAPERVILLE	<b>STATE</b>	IL	<b>DESIGNER</b>	KM	<b>SALESPERSON</b>	BR
<b>DRWG. NO.</b>	90306	<b>SCALE:</b>	NOTED	<b>DATE:</b>	01.06.2021	<b>SHEET NO.</b>	2



# SITE PLAN - OPT 3 REV 1

1" = 50'

**DOYLE**  
GENERAL SIGN CONTRACTORS  
232 INTERSTATE RD. P.O. BOX 1068  
ADDISON, IL 60101 630-543-9490  
FAX 630-543-9493

DATE	REVISION
04.21.21	SIGN A - ONLY ONE WILL BE ALLOWED- REVISED PLOT

CUSTOMER APPROVAL \_\_\_\_\_ DATE \_\_\_\_\_

This design is the original and unpublished work of DOYLE SIGNS, INC. and may not be reproduced, copied or exhibited in any fashion without the expressed written consent from an authorized officer of The Company. The rights to this design may be purchased.

CLIENT	KLA SCHOOLS		
ADDRESS	2719 BEEBE DR.		
CITY	NAPERVILLE	STATE	IL
DRWG. NO.	90306	SCALE:	NOTED
DESIGNER	KM	DATE:	01.06.2021
SALESPERSON	BR	SHEET NO.	3