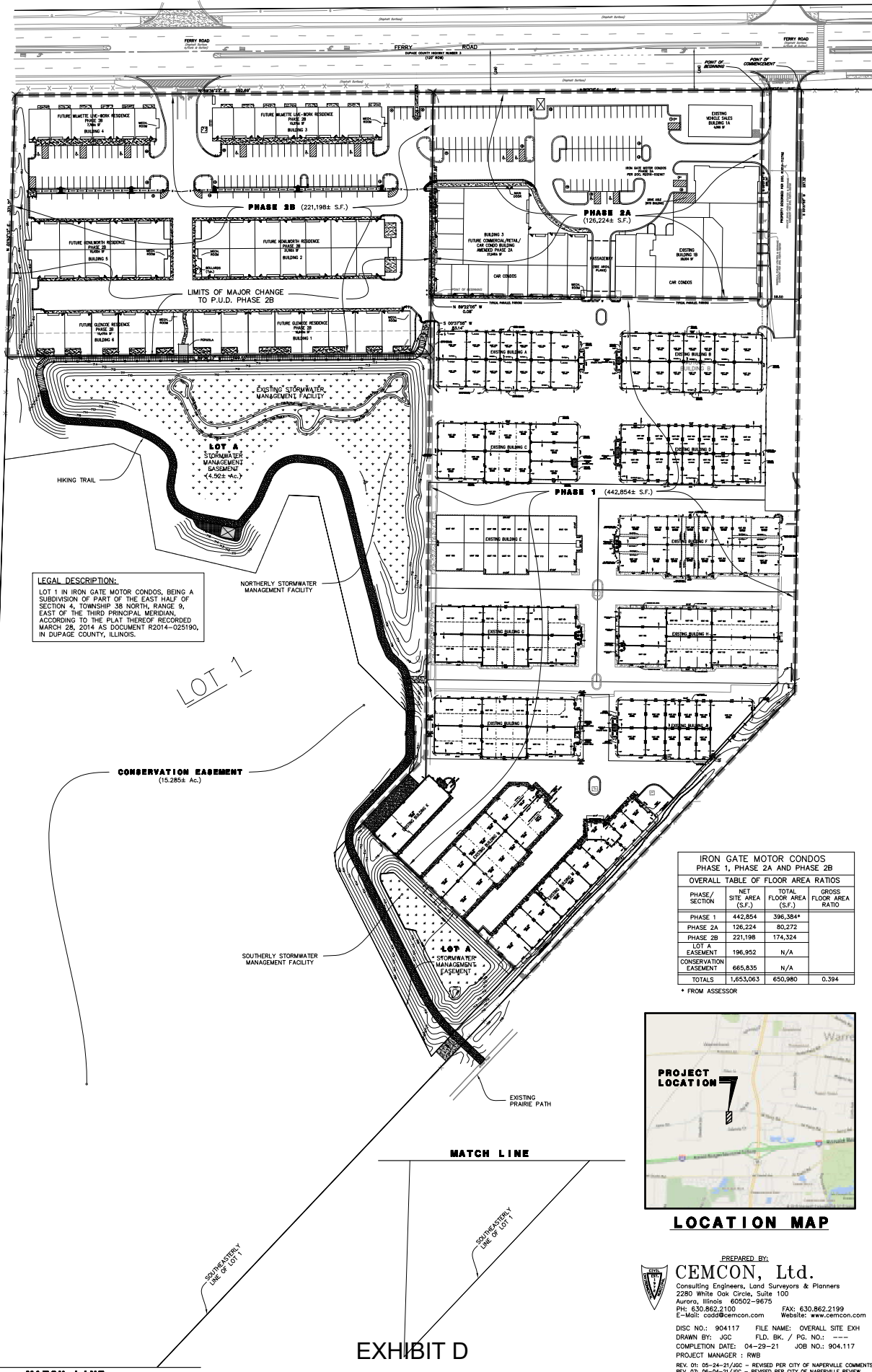
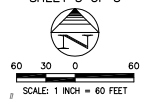


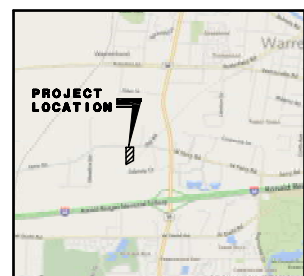
P.U.D. EXHIBIT PLAT FOR IRON GATE MOTOR CONDOS



LEGAL DESCRIPTION:
 LOT 1 IN IRON GATE MOTOR CONDOS, BEING A SUBDIVISION OF PART OF THE EAST HALF OF SECTION 4, TOWNSHIP 38 NORTH, RANGE 9, EAST OF THE THIRD PRINCIPAL MERIDIAN, ACCORDING TO THE PLAT THEREOF RECORDED MARCH 28, 2014 AS DOCUMENT R2014-025190, IN DUPAGE COUNTY, ILLINOIS.

IRON GATE MOTOR CONDOS PHASE 1, PHASE 2A AND PHASE 2B			
OVERALL TABLE OF FLOOR AREA RATIOS			
PHASE / SECTION	NET SITE AREA (S.F.)	TOTAL FLOOR AREA (S.F.)	GROSS FLOOR AREA RATIO
PHASE 1	442,854	396,384*	
PHASE 2A	176,224	80,272	
PHASE 2B	221,198	174,324	
LOT A EASEMENT	196,952	N/A	
CONSERVATION EASEMENT	665,835	N/A	
TOTALS	1,653,063	650,980	0.394

* FROM ASSESSOR



LOCATION MAP

PLAT FILE CREATED 6/1/2021 BY: JPT, GDB/LA
 DRAWING PATH: P:\PROJECTS\2021\IRON GATE MOTOR CONDOS\OVERALL SITE EXHIBIT

PREPARED BY:
C EMCOR, Ltd.
 Consulting Engineers, Land Surveyors & Planners
 2280 White Oak Circle, Suite 100
 Aurora, Illinois 60502-9675
 PH: 630.862.2100 FAX: 630.862.2199
 E-MAIL: cec@emcor.com Website: www.emcor.com

DISC NO.: 904117 FILE NAME: OVERALL SITE EXH
 DRAWN BY: JGC FLD. BK. / PG. NO.: ---
 COMPLETION DATE: 04-29-21 JOB NO.: 904.117
 PROJECT MANAGER : RWB
 REV. 01: 05-24-21/JGC - REVISED PER CITY OF NAPERVILLE COMMENTS
 REV. 07: 06-04-21/JGC - REVISED PER CITY OF NAPERVILLE REVIEW
 Copyright © 2021 Emcor, Ltd. All rights reserved.

EXHIBIT D