



225 W. Jefferson Avenue
Naperville, IL 60540
T 630.961.1787
F 630.961.9925
hitchcockdesigngroup.com

Avenida Naperville

Commons Street
Naperville, Illinois 60563

Avenida Partners, LLC
130 Newport Center Drive, Suite 220
Newport Beach, California 92660

Preliminary Landscape Plans

June 2, 2017
Rev. July 14, 2017
Rev. August 30, 2017

Project Team

Landscape Architect
Hitchcock Design Group
225 West Jefferson Avenue
Naperville, Illinois 60540
T 630.961.1787
F 630.961.9925

Civil Engineer
V3 Companies
7325 Jones Avenue
Woodridge, Illinois 60517
T 630.724.8200
F 630.724.8202

Architect
Meeks + Partners
18000 Memorial Drive, Suite 104
Houston, Texas 77079
T 281.558.8787

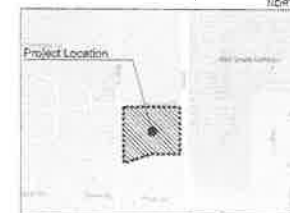
General Notes

1. Base-map information obtained from plans prepared by V3 Companies received May 26, 2017.
2. Verify site conditions, and information on drawings. Promptly report any concealed conditions, mistakes, discrepancies or deviations from the information shown in the Contract Documents. The Owner is not responsible for unanticipated changes or extra work required to correct unimpaired discrepancies.
3. Secure and pay for permits, fees and inspections necessary for the proper execution of this work. Comply with codes applicable to this work.
4. Do not locate plants within 10' of utility structures. Do not locate plants within 2' horizontally of underground utility lines.

Sheet Index

L1.0	Tree Survey
L1.1	Tree Survey List
L2.0	Preliminary Landscape Plan
L3.0	Planting Details and Plant Requirement Table

Project Location Map



It's smart. It's free. It's the law.

Call before you dig.

800.892.0123



- TREE SURVEY NOTES**
1. Existing trees shown to remain back one to be removed. Existing trees shown to be removed to be preserved.
 2. Additional removals may be required to accommodate proposed grading and utility.
 3. Plant removals to be determined at time of final engineering.



225 W. Jefferson Avenue
Naperville, IL 60540
T 630.961.1787
F 630.961.9925
hitchcockdesigngroup.com

PREPARED FOR
Avenida Partners, LLC
130 Newport Center Drive, Suite 220
Newport Beach, California 92660

PROJECT
Avenida Naperville
Commons Street
Naperville, Illinois 60563

CONSULTANTS
Civil Engineer
V3 Companies
Waukegan, Illinois 60057
T 830.724.9260
Architect
Merrill Partners
Houston, Texas 77079
T 281.558.4718

ISSUED FOR PRELIMINARY
LANDSCAPE REVIEW
June 2, 2017

REV. NO.	DATE	ISSUE
1	7/14/2017	Per City Comments
2	10/30/2017	Per City Comments

CHECKED BY: OSR DRAWN BY: NMA

SHEET TITLE
Tree Survey



SHEET NUMBER
L1.0

©2017 Hitchcock Design Group

Tree ID	Species	DBH (in)	Height (ft)	Health	Notes
001
002
003
004
005
006
007
008
009
010
011
012
013
014
015
016
017
018
019
020
021
022
023
024
025
026
027
028
029
030
031
032
033
034
035
036
037
038
039
040
041
042
043
044
045
046
047
048
049
050
051
052
053
054
055
056
057
058
059
060
061
062
063
064
065
066
067
068
069
070
071
072
073
074
075
076
077
078
079
080
081
082
083
084
085
086
087
088
089
090
091
092
093
094
095
096
097
098
099
100

NOTE: Exact tree removals to be determined at Final Engineering

HITCHCOCK DESIGN GROUP
 225 W. Jefferson Avenue
 Naperville, IL 60546
 T 630.561.1787
 F 630.561.9925
 hitchcockdesigngroup.com

PREPARED FOR
Avenida Partners, LLC
 130 Newport Center Drive, Suite 220
 Newport Beach, California 92660

PROJECT
Avenida Naperville
 Commons Street
 Naperville, Illinois 60563

CONSULTANTS
 Civil Engineer
V3 Companies
 Woodridge, Illinois 60517
 T 503.724.9200

Architect
 Streets + Patterns
 Chicago, Texas 75219
 T 281.556.8778

ISSUED FOR PRELIMINARY
 LANDSCAPE REVIEW
 June 2, 2017

Rev.	Date	Issue
1	11/6/2017	Per City Comments
2	6/2/2017	Per City Comments

CHECKED BY: GBR
 DRAWN BY: NAA

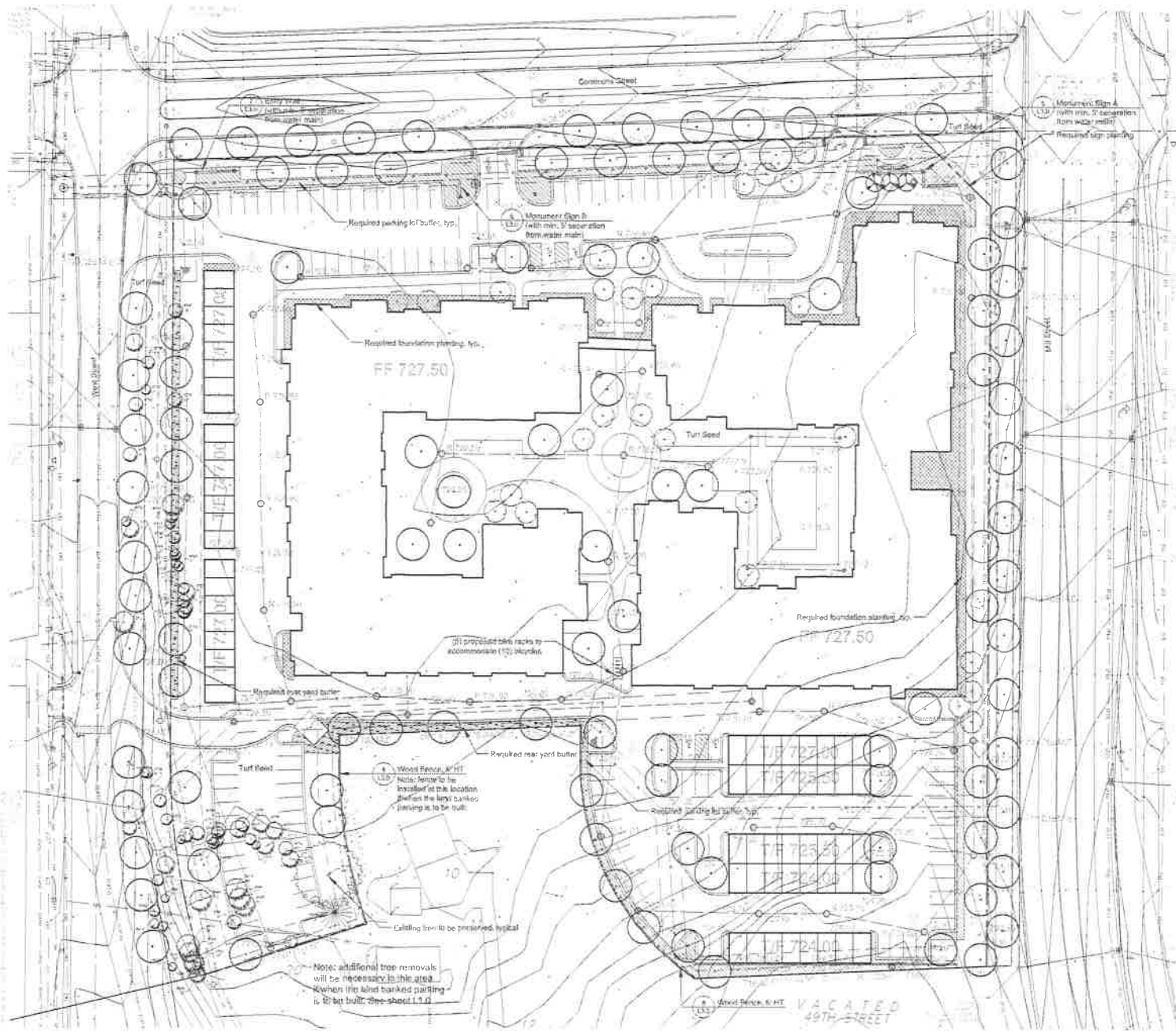
SHEET TITLE
Tree Survey List

SCALE IN FEET

NORTH

SHEET NUMBER
L1.1

©2017 Hitchcock Design Group



PLANTING LEGEND

- Bare Root Tree
- Ornamental Tree, typical
See note for installation.
- Street Tree, typical
See note for installation.
- Required Planting Lot Buffer - 3' x 7' in height, 3' x 6' in width
- Required Foundation Planting - 2' x 6' in height, 3' x 6' in width
- Required Rear Yard Buffer - 3' x 7' in height, 3' x 6' in width
- Required Sign Planting - 2' x 6' in height, 3' x 6' in width
- Landscaping
- Turf Grass

Note: All planting will be done by the contractor. All plants shall be installed by the contractor.

Note: Further coordination shall be required for utility lines. See sheet L2.1 for utility lines.

HITCHCOCK DESIGN GROUP
Creating Better Places

225 W. Jefferson Avenue
Naperville, IL 60540
T 630.561.1787
F 630.561.0025
hitchcockdesigngroup.com

PREPARED FOR
Avenida Partners, LLC
130 Newport Center Drive, Suite 220
Newport Beach, California 92660

PROJECT
Avenida Naperville
Commons Street
Naperville, Illinois 60563

CONSULTANTS
Civil Engineer
VA Companies
1100 S. Illinois Street
Chicago, Illinois 60607
Tel: 773.233.1100

Architect
Stark + Partners
Houston, Texas 77079
Tel: 281.588.876

ISSUED FOR PRELIMINARY LANDSCAPE REVIEW
June 2, 2017

REVISIONS	No.	Date	Issue
1	7/14/2017	Per City Comments	
2	12/30/2017	Per City Comments	

CHECKED BY: GBR
DRAWN BY: NAA

SHEET TITLE
Preliminary Landscape Plan

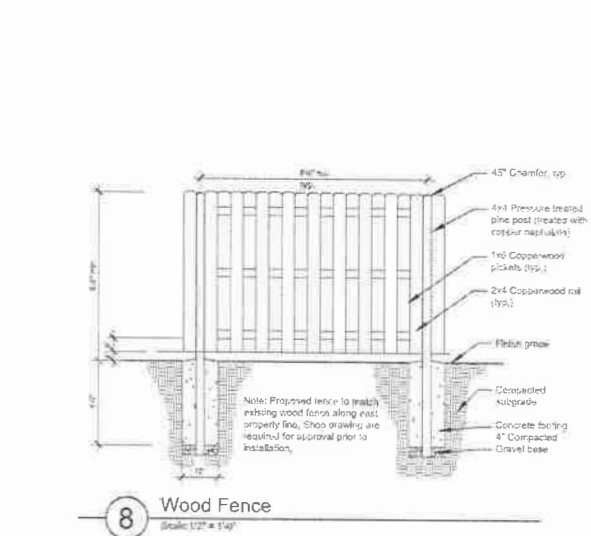
SCALE IN FEET
1" = 30'

NORTH

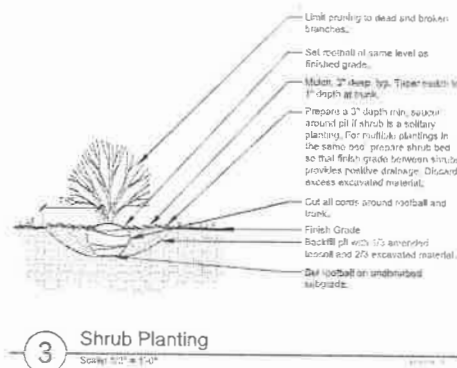
SHEET NUMBER
L2.0

©2017 Hitchcock Design Group

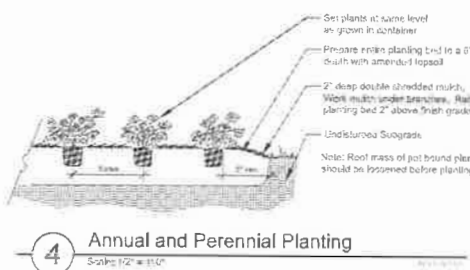
EXHIBIT F



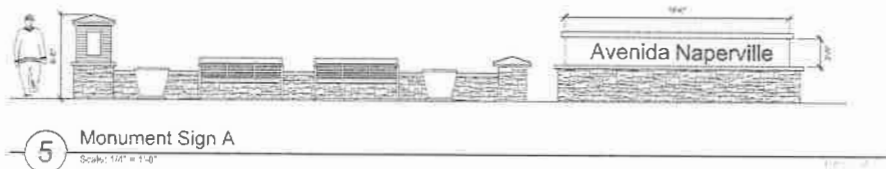
8 Wood Fence
Scale: 1/2" = 1'-0"



3 Shrub Planting
Scale: 3/32" = 1'-0"



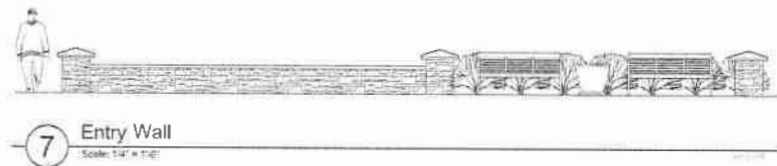
4 Annual and Perennial Planting
Scale: 1/2" = 1'-0"



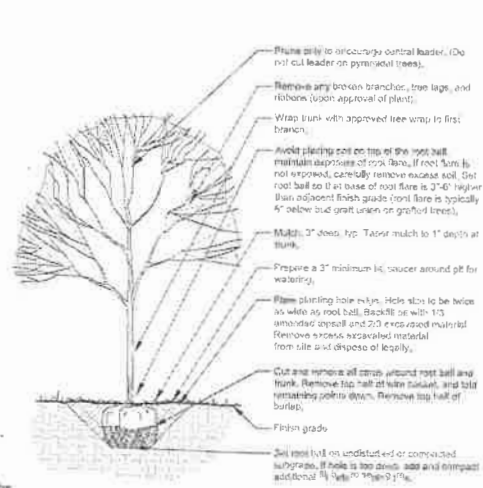
5 Monument Sign A
Scale: 1/8" = 1'-0"



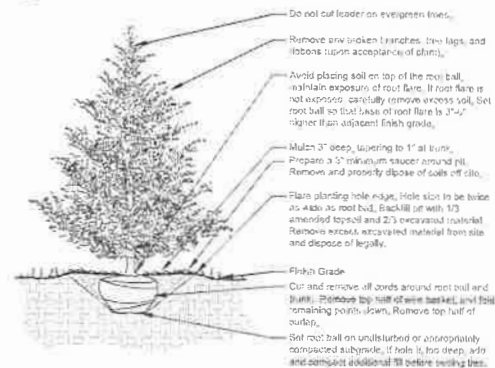
6 Monument Sign B
Scale: 1/2" = 1'-0"



7 Entry Wall
Scale: 1/4" = 1'-0"



1 Deciduous Tree Planting
Scale: 1/32" = 1'-0"



2 Evergreen Tree Planting
Scale: 1/2" = 1'-0"

Plant Requirement Table

Plant	Requirement	Applicable Code	Qty
Evergreen (Landscaping - Public Open Space)	2'-6" x 6" x 6" - 2 1/2' High	Amundsville Sec. 1-5.5.2	10
Deciduous (Landscaping - Public Open Space)	2'-6" x 6" x 6" - 2 1/2' High	Amundsville Sec. 1-5.5.2	10
Shrub	2'-6" x 6" x 6" - 2 1/2' High	Amundsville Sec. 1-5.5.2	10
Annual/Perennial (Landscaping - Public Open Space)	2'-6" x 6" x 6" - 2 1/2' High	Amundsville Sec. 1-5.5.2	10

REVISIONS	No.	Date	Issue
1	01/04/2017	01/04/2017	PRELIMINARY CONSTRUCTION
2	03/02/2017	03/02/2017	PRELIMINARY CONSTRUCTION

CHECKED BY: CBR
DRAWN BY: NNA

SHEET TITLE
Planting Details and Plant Requirement Table

SCALE IN FEET
AS NOTED