

TYPICAL EXTERIOR MATERIALS

METAL EAVE & COPING

FACE BRICK

ALUMINUM DOOR & FRAME  
WITH INSULATING GLASS

CAST STONE

METAL CANOPIES

23'-6"

INDICATES ROOF MOUNTED HVAC EQUIPMENT  
SCREENED BEHIND PARAPET, TYPICAL

16'-4"

13'-0"



NORTH ELEVATION

WOOD ACCENTS

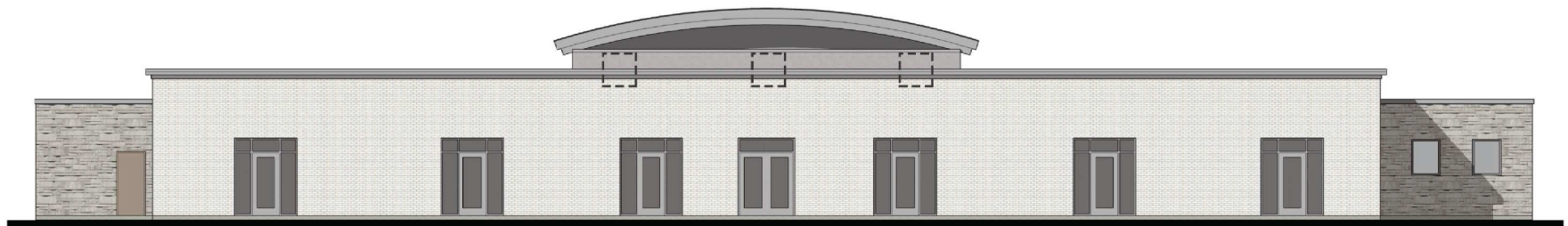
SIGN BY OWNER

HVAC SCREEN PARAPET



EAST ELEVATION

WEST ELEVATION



SOUTH ELEVATION

7'-4"



TRASH ENCLOSURE ELEVATIONS

TRASH ENCLOSURE MATERIALS  
- FACE BRICK WALLS  
- METAL COPINGS  
- RED CEDAR GATES

**KLA CHILDCARE FACILITY**  
NAPERVILLE, IL MARCH 5, 2021